

---

National Mining Association

# Weekly Statistical Summary

March 7, 2008 Edition  
(Data for Week Ending March 1, 2008)

Prepared by  
National Mining Association



Suite 500 East, 101 Constitution Avenue, NW  
Washington, DC, 20001  
Phone (202) 463-2600  
Visit us at <http://www.nma.org>

# NMA Weekly Statistical Summary

Vol. 46, No. 09  
Dated 03/07/08

PRODUCTION, CONSUMPTION & TRADE						
	Week Ended			Cumulative Jan 1 to		
	03/01/08	03/03/07	% Chng	03/01/08	03/03/07	% Chng
<b>EIA Coal Production (000 Tons):</b>						
Week Ended/Year to Date	23,263	22,420	3.8%	198,039	191,384	3.5%
52 Weeks Ended	1,149,334	1,159,125	-0.8%			
<b>Month Ended -- February</b>						
	<b>February 08/07</b>		<b>% Chng</b>	<b>Jan - Feb 08/07</b>		<b>% Chng</b>
	95,567	88,209	8.3%	196,280	187,570	4.6%
MONTH ENDED AND CUMULATIVE NUMBERS ARE PRELIMINARY AND SUBJECT TO CHANGE						
<b>DOC Bituminous Coal Trade (000 Tons)</b>						
<b>Exports:</b>						
	<b>December 07/06</b>		<b>% Chng</b>	<b>Jan - Dec 07/06</b>		<b>% Chng</b>
Metallurgical	2,753	2,255	22.1%	32,280	27,607	16.9%
Steam	3,095	1,897	63.2%	26,368	21,707	21.5%
<b>Imports:</b>						
	2,889	2,630	9.8%	36,347	36,246	0.3%
<b>Week Ended</b>						
	<b>03/01/08</b>	<b>03/03/07</b>	<b>% Chng</b>	<b>Cumulative Jan 1 to</b>		
				<b>03/01/08</b>	<b>03/03/07</b>	<b>% Chng</b>
<b>EEl Electric Output (Mil. Kwh)</b>	76,644	73,979	3.6%	715,405	713,169	0.3%
<b>AISI Raw Steel Output (000 Tons)</b>	2,153	2,126	1.3%	18,969	17,889	6.0%
<b>EIA U.S. PETROLEUM DATA</b>						
4-Week Averages 000 Barrels per Day						
<b>Week Ending</b>						
	<b>02/29/08</b>	<b>02/29/07</b>	<b>% Chng</b>	<b>Cumulative Daily Averages</b>		
				<b>2008</b>	<b>2007</b>	<b>% Chng</b>
<b>PETROLEUM SUPPLY:</b>						
Domestic Crude	5,043	5,147	-2.0	--	--	--
Net Imports (Incl. SPR)	9,783	9,024	8.4	--	--	--
SPR Stocks W/D or Added	-17	0	--	--	--	--
Other Stocks W/D or added	-195	201	--	--	--	--
Natural Gas Liquids Prod.	2,657	2,219	19.7	--	--	--
Cumulative daily petroleum averages will be shown beginning with week ending April 4, 2008 data.						



**NMA**  
THE AMERICAN RESOURCE

National Mining Association Web Site: [http:// www.nma.org](http://www.nma.org)

## EIA Estimated Weekly U.S. Coal Production Overview (Thousand Short Tons)

Coal-Producing Region and State	Week Ended			Year to Date			52 Weeks Ended		
	3/1/2008	2/23/2008	3/3/2007	3/1/2008	3/1/2007	Percent Change	3/1/2008	3/3/2007	Percent Change
Alabama	407	388	400	3,408	3,475	-1.9	19,037	18,799	1.3
Alaska	26	25	35	214	306	-30.1	1,218	1,508	-19.2
Arizona	127	121	158	1,078	1,372	-21.4	7,540	8,201	-8.1
Arkansas	2	2	1	18	11	57.4	87	32	172.1
Colorado	738	704	622	6,177	5,311	16.3	37,268	37,018	0.7
Illinois	709	677	742	5,921	6,407	-7.6	33,499	33,681	-0.5
Indiana	745	712	701	6,262	6,066	3.2	35,903	35,298	1.7
Kansas	10	10	8	85	72	18.6	452	459	-1.4
<b>Kentucky Total</b>	<b>2,391</b>	<b>2,282</b>	<b>2,289</b>	<b>20,068</b>	<b>19,840</b>	<b>1.2</b>	<b>115,247</b>	<b>119,447</b>	<b>-3.5</b>
Eastern	1,746	1,666	1,704	14,666	14,795	-0.9	86,107	91,989	-6.4
Western	645	616	584	5,402	5,045	7.1	29,141	27,458	6.1
Louisiana	109	85	86	785	616	27.4	3,286	4,140	-20.6
Maryland	43	41	46	358	403	-11.0	2,535	4,489	-43.5
Mississippi	60	50	84	502	560	-10.4	3,551	3,736	-4.9
Missouri	5	4	5	38	40	-3.9	230	330	-30.2
Montana	873	833	784	7,322	6,681	9.6	42,597	42,167	1.0
New Mexico	479	458	426	4,036	3,698	9.2	24,652	25,676	-4.0
North Dakota	604	576	600	5,088	5,219	-2.5	29,274	30,365	-3.6
Ohio	487	465	435	4,088	3,765	8.6	22,423	22,325	0.4
Oklahoma	39	37	32	327	280	16.7	1,776	1,894	-6.3
<b>Pennsylvania Total</b>	<b>1,355</b>	<b>1,293</b>	<b>1,353</b>	<b>11,352</b>	<b>11,748</b>	<b>-3.4</b>	<b>64,580</b>	<b>66,571</b>	<b>-3.0</b>
Anthracite	36	35	31	303	272	11.6	1,585	1,538	3.1
Bituminous	1,319	1,259	1,322	11,049	11,477	-3.7	62,995	65,033	-3.1
Tennessee	50	48	55	419	480	-12.7	2,525	2,773	-8.9
Texas	850	811	771	7,125	6,562	8.6	42,391	44,890	-5.6
Utah	468	446	473	3,917	4,098	-4.4	23,326	25,479	-8.5
Virginia	528	503	562	4,417	4,864	-9.2	26,308	29,417	-10.6
Washington	--	--	--	--	--	--	0	2,050	-100.0
<b>West Virginia Total</b>	<b>3,171</b>	<b>3,027</b>	<b>3,121</b>	<b>26,578</b>	<b>27,012</b>	<b>-1.6</b>	<b>153,198</b>	<b>152,772</b>	<b>0.3</b>
Northern	1,002	956	931	8,347	8,059	3.6	44,534	42,766	4.1
Southern	2,169	2,070	2,191	18,231	18,954	-3.8	108,664	110,005	-1.2
Wyoming	8,989	9,631	8,632	78,457	72,499	8.2	456,431	445,607	2.4
<b>Appalachian Total</b>	<b>7,786</b>	<b>7,431</b>	<b>7,678</b>	<b>65,287</b>	<b>66,541</b>	<b>-1.9</b>	<b>376,712</b>	<b>389,134</b>	<b>-3.2</b>
<b>Interior Total</b>	<b>3,175</b>	<b>3,004</b>	<b>3,014</b>	<b>26,463</b>	<b>25,659</b>	<b>3.1</b>	<b>150,317</b>	<b>151,918</b>	<b>-1.1</b>
<b>Western Total</b>	<b>12,303</b>	<b>12,794</b>	<b>11,728</b>	<b>106,288</b>	<b>99,184</b>	<b>7.2</b>	<b>622,305</b>	<b>618,073</b>	<b>0.7</b>
<b>East of Miss. River</b>	<b>9,946</b>	<b>9,486</b>	<b>9,788</b>	<b>83,373</b>	<b>84,620</b>	<b>-1.5</b>	<b>478,806</b>	<b>489,308</b>	<b>-2.1</b>
<b>West of Miss. River</b>	<b>13,317</b>	<b>13,743</b>	<b>12,632</b>	<b>114,666</b>	<b>106,764</b>	<b>7.4</b>	<b>670,528</b>	<b>669,817</b>	<b>0.1</b>
Bituminous and Lignite	23,227	23,194	22,389	197,736	191,113	3.5	1,147,749	1,157,588	-0.8
Anthracite	36	35	31	303	272	11.6	1,585	1,538	3.1
<b>U.S. Total</b>	<b>23,263</b>	<b>23,229</b>	<b>22,420</b>	<b>198,039</b>	<b>191,384</b>	<b>3.5</b>	<b>1,149,334</b>	<b>1,159,125</b>	<b>-0.8</b>
Railroad Cars Loaded	150,722	149,959	143,788	1,301,716	1,257,865	3.5	7,447,883	7,444,030	0.1

Source: Energy Information Administration

### EIA Estimated Weekly and Monthly U.S. Coal Production Overview (Thousand Short Tons)

Coal-Producing Region and State	Week Ended		Year to Date		Month Ended		January - February		Percent Change
	3/1/2008	3/3/2007	3/1/2008	3/1/2007	February 2008	February 2007	2008	2007	
Alabama	407	400	3,408	3,475	1,662	1,594	3,406	3,396	0.3
Alaska	26	35	214	306	105	140	214	299	-28.4
Arizona	127	158	1,078	1,372	518	629	1,078	1,341	-19.6
Arkansas	2	1	18	11	9	5	18	11	61.1
Colorado	738	622	6,177	5,311	2,986	2,481	6,099	5,213	17.0
Illinois	709	742	5,921	6,407	2,890	2,960	5,892	6,271	-6.0
Indiana	745	701	6,262	6,066	3,040	2,797	6,238	5,936	5.1
Kansas	10	8	85	72	42	33	85	70	21.4
<b>Kentucky Total</b>	<b>2,391</b>	<b>2,289</b>	<b>20,068</b>	<b>19,840</b>	<b>9,761</b>	<b>9,134</b>	<b>20,011</b>	<b>19,404</b>	<b>3.1</b>
Eastern	1,746	1,704	14,666	14,795	7,132	6,802	14,639	14,465	1.2
Western	645	584	5,402	5,045	2,628	2,332	5,372	4,939	8.8
Louisiana	109	86	785	616	382	305	774	602	28.5
Maryland	43	46	358	403	175	185	358	394	-9.1
Mississippi	60	84	502	560	220	277	495	547	-9.4
Missouri	5	5	38	40	19	18	38	39	-1.6
Montana	873	784	7,322	6,681	3,527	3,128	7,218	6,561	10.0
New Mexico	479	426	4,036	3,698	1,958	1,701	4,027	3,616	11.4
North Dakota	604	600	5,088	5,219	2,470	2,393	5,088	5,099	-0.2
Ohio	487	435	4,088	3,765	1,985	1,737	4,071	3,684	10.5
Oklahoma	39	32	327	280	159	128	327	273	19.4
<b>Pennsylvania Total</b>	<b>1,355</b>	<b>1,353</b>	<b>11,352</b>	<b>11,748</b>	<b>5,535</b>	<b>5,402</b>	<b>11,330</b>	<b>11,486</b>	<b>-1.4</b>
Anthracite	36	31	303	272	149	125	303	265	14.1
Bituminous	1,319	1,322	11,049	11,477	5,386	5,277	11,027	11,221	-1.7
Tennessee	50	55	419	480	204	220	419	469	-10.6
Texas	850	771	7,125	6,562	3,429	3,076	7,015	6,448	8.8
Utah	468	473	3,917	4,098	1,909	1,887	3,906	4,008	-2.5
Virginia	528	562	4,417	4,864	2,150	2,245	4,398	4,760	-7.6
Washington	--	--	--	--	--	--	--	--	--
<b>West Virginia Total</b>	<b>3,171</b>	<b>3,121</b>	<b>26,578</b>	<b>27,012</b>	<b>12,930</b>	<b>12,457</b>	<b>26,474</b>	<b>26,429</b>	<b>0.2</b>
Northern	1,002	931	8,347	8,059	4,088	3,714	8,318	7,883	5.5
Southern	2,169	2,191	18,231	18,954	8,842	8,743	18,156	18,546	-2.1
Wyoming	8,989	8,632	78,457	72,499	37,503	33,276	77,304	71,216	8.5
<b>Appalachian Total</b>	<b>7,786</b>	<b>7,678</b>	<b>65,287</b>	<b>66,541</b>	<b>31,774</b>	<b>30,642</b>	<b>65,094</b>	<b>65,082</b>	<b>*</b>
<b>Interior Total</b>	<b>3,175</b>	<b>3,014</b>	<b>26,463</b>	<b>25,659</b>	<b>12,817</b>	<b>11,931</b>	<b>26,253</b>	<b>25,135</b>	<b>4.4</b>
<b>Western Total</b>	<b>12,303</b>	<b>11,728</b>	<b>106,288</b>	<b>99,184</b>	<b>50,976</b>	<b>45,635</b>	<b>104,932</b>	<b>97,353</b>	<b>7.8</b>
<b>East of Miss. River</b>	<b>9,946</b>	<b>9,788</b>	<b>83,373</b>	<b>84,620</b>	<b>40,552</b>	<b>39,008</b>	<b>83,091</b>	<b>82,774</b>	<b>0.4</b>
<b>West of Miss. River</b>	<b>13,317</b>	<b>12,632</b>	<b>114,666</b>	<b>106,764</b>	<b>55,015</b>	<b>49,200</b>	<b>113,188</b>	<b>104,796</b>	<b>8.0</b>
Bituminous and Lignite	23,227	22,389	197,736	191,113	95,419	88,084	195,977	187,304	4.6
Anthracite	36	31	303	272	149	125	303	265	14.1
<b>U.S. Total</b>	<b>23,263</b>	<b>22,420</b>	<b>198,039</b>	<b>191,384</b>	<b>95,567</b>	<b>88,209</b>	<b>196,280</b>	<b>187,570</b>	<b>4.6</b>
Railroad Cars Loaded	150,722	143,788	1,301,716	1,257,865	--	--	--	--	--

Source: Energy Information Administration



**Volume 76 No. 9**

**OUTPUT FOR WEEK ENDED - Mar 01, 2008**

**Mar 05, 2008**

The net available amount of electric energy distributed by the Total Electric Utility Industry+ for the week ended Saturday, **Mar 01, 2008** was **76,644** gigawatthours (GWh), according to the Edison Electric Institute. This is equivalent to **187** on the weekly electric output index.

**WEEKLY ELECTRIC OUTPUT BY GEOGRAPHIC DIVISION**  
(48 CONTIGUOUS STATES)

	Week Ended March 01		52 Weeks Ended March 01	
	GWh Output	% Increase Over Corresponding Week of 2007	GWh Output	% Increase Over Corresponding Period of 2007
New England	2,633	1.7	133,901	1.1
Mid-Atlantic	8,505	-0.6	457,361	2.2
Central Industrial	14,758	5.2	722,791	2.8
West Central	6,782	4.4	353,677	2.1
Southeast	21,190	8.1	1,107,519	2.2
South Central	10,053	5.3	596,264	-2.1
Rocky Mountain	4,172	-1.6	279,387	6.1
Pacific Northwest	3,359	-2.0	162,096	5.5
Pacific Southwest	5,192	-5.7	289,852	-1.1
Total United States	76,644	3.6	4,102,848	1.8

**WEEKLY ELECTRIC OUTPUT IN PREVIOUS WEEKS--GWh**

Week Ended	2008	Week Ended	2007	% Inc. (08/07)	52 Weeks Ended	2008	% Inc. (08/07)
Feb 09	76,941	Feb 10	84,063	-8.5	Feb 09	4,102,039	1.9
Feb 16	79,368	Feb 17	82,886	-4.2	Feb 16	4,098,521	1.7
Feb 23	78,367	Feb 24	76,705	2.2	Feb 23	4,100,183	1.7
Mar 01	76,644	Mar 03	73,979	3.6	Mar 01	4,102,848	1.8
<b>Mar 01</b>	<b>715,405</b>	<b>Mar 03</b>	<b>713,169</b>	<b>0.3</b>	<b>YEAR TO DATE, FIRST 9 WEEKS</b>		

**WEEKLY ELECTRIC OUTPUT INDEX--TOTAL U.S.\***  
**SEASONALLY ADJUSTED 1982 = 100**

Week Ended	2008	Week Ended	2007	Week Ended	2006
Feb 09	180	Feb 10	195	Feb 11	178
Feb 16	186	Feb 17	194	Feb 18	182
Feb 23	188	Feb 24	185	Feb 25	184
Mar 01	187	Mar 03	179	Mar 04	176

\* Excludes Alaska and Hawaii

+ Includes investor-owned companies, cooperatives and government-owned utilities.

Copyright © 2008 Edison Electric Institute. All rights reserved.

## WEEKLY ELECTRIC OUTPUT BY GEOGRAPHIC DIVISION (48 CONTIGUOUS STATES)

	Week Ended			NMA CUMULATIVE JANUARY 1 to			52 Weeks Ended		
	1-Jan 2008 GWh Output	3-Mar 2007 GWh Output	% Increase Over Corresponding Week of 2007	1-Jan 2008 GWh Output	3-Mar 2007 GWh Output	% Increase Over Corresponding Week of 2007	1-Jan 2008 GWh Output	3-Mar 2007 GWh Output	% Increase Over Corresponding Week of 2007
<b>New England</b>	2,633	2,590	1.7%	<b>23,669</b>	<b>24,214</b>	<b>-2.3%</b>	133,901	132,499	1.1%
<b>Mid-Atlantic</b>	8,505	8,555	-0.6%	<b>79,092</b>	<b>80,399</b>	<b>-1.6%</b>	457,361	447,543	2.2%
<b>Central Industrial</b>	14,758	14,027	5.2%	<b>132,538</b>	<b>131,887</b>	<b>0.5%</b>	722,791	703,178	2.8%
<b>West Central</b>	6,782	6,497	4.4%	<b>62,745</b>	<b>61,284</b>	<b>2.4%</b>	353,677	346,552	2.1%
<b>Southeast</b>	21,190	19,594	8.1%	<b>192,551</b>	<b>191,691</b>	<b>0.4%</b>	1,107,519	1,083,266	2.2%
<b>South Central</b>	10,053	9,546	5.3%	<b>97,158</b>	<b>99,028</b>	<b>-1.9%</b>	596,264	608,998	-2.1%
<b>Rocky Mountain</b>	4,172	4,239	-1.6%	<b>45,223</b>	<b>43,268</b>	<b>4.5%</b>	279,387	263,298	6.1%
<b>Pacific Northwest</b>	3,359	3,427	-2.0%	<b>35,040</b>	<b>32,023</b>	<b>9.4%</b>	162,096	153,667	5.5%
<b>Pacific Southwest</b>	<u>5,192</u>	<u>5,504</u>	-5.7%	<u><b>47,389</b></u>	<u><b>49,375</b></u>	<b>-4.0%</b>	<u>289,852</u>	<u>292,977</u>	-1.1%
<b>Total United States *</b>	76,644	73,979	3.6%	<b>715,405</b>	<b>713,169</b>	<b>0.3%</b>	4,102,848	4,031,978	1.8%

**Notes:** EEI output data are an estimate of electricity load made available for distribution derived as weekly net generation + purchases from non-utilities + net imports - exports - sales for resale. It is not meant to be a measure of electricity generation for the U.S. EEI survey data represent the majority of national distribution (large utilities, large government power projects, some independent and large municipal power projects). The remaining segment of the industry (smaller producers) is estimated. Non-utility generation is captured via direct sales to utilities.

\* Excludes Alaska and Hawaii

\*\* Less than one-tenth of one percent

SOURCE: Edison Electric Institute (EEI), *Weekly Electric Output Report*.

AMERICAN IRON AND STEEL INSTITUTE  
 1140 Connecticut Avenue, Suite 705  
 Washington, D.C. 20036

March 3, 2008

**ESTIMATED WEEKLY RAW STEEL\* PRODUCTION**

<u>Period</u>	<u>Thousand Net Tons</u>	<u>Percent Change from Previous Period</u>	<u>Percent Capability Utilization**</u>	<u>Production by District</u>		
				<u>Week Ending</u>		
				<u>Mar 1</u>	<u>Feb 25</u>	
<b><u>Week Ending</u></b>				North East Coast	181	188
				Pgh/Youngstown	219	217
				Lake Erie	83	70
Mar 1, 2008	2,153	-0.2	90.3	Detroit	116	104
Mar 1, 2007	2,126	1.2	89.5	Indiana/Chicago	511	529
Feb 23, 2008	2,158	0.6	90.5	Midwest	272	268
				Southern	679	689
<b><u>Year-to-Date+</u></b>				Western	<u>92</u>	<u>93</u>
Mar 1, 2008	18,969	6.0	88.4	Total	2153	2158
Mar 1, 2007	17,889	-	87.0			

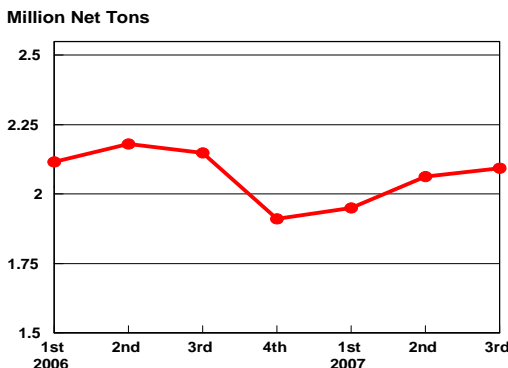
\*Raw steel production tonnage included in this report is estimated based on a sampling of steel producers. Therefore, this report should be used primarily to assess production trends. The AISI production report "AIS 7," produced monthly and available by subscription, provides a more accurate summary of steel production based on data supplied by companies representing approximately 75% of U.S. production capacity.

+Includes revisions for previous months

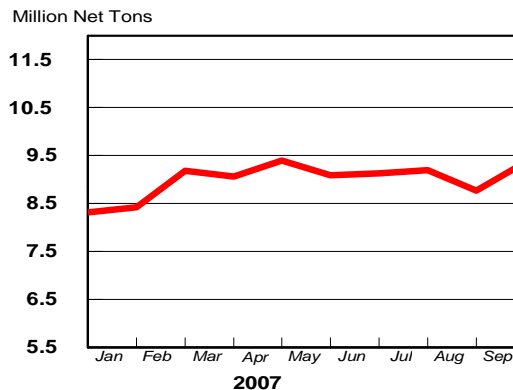
NOTE: Capability for the Fourth Quarter 2007 is approximately 31.3 million net tons vs 30.7 million net tons for the same period last year, and 30.1 million tons for the third quarter of 2007.

Capability -	2003 approx.	2.3 million tons/week
	2004	2.2
	2005	2.3
	2006	2.4
	2007	2.4

**Average Weekly Raw Steel Production**

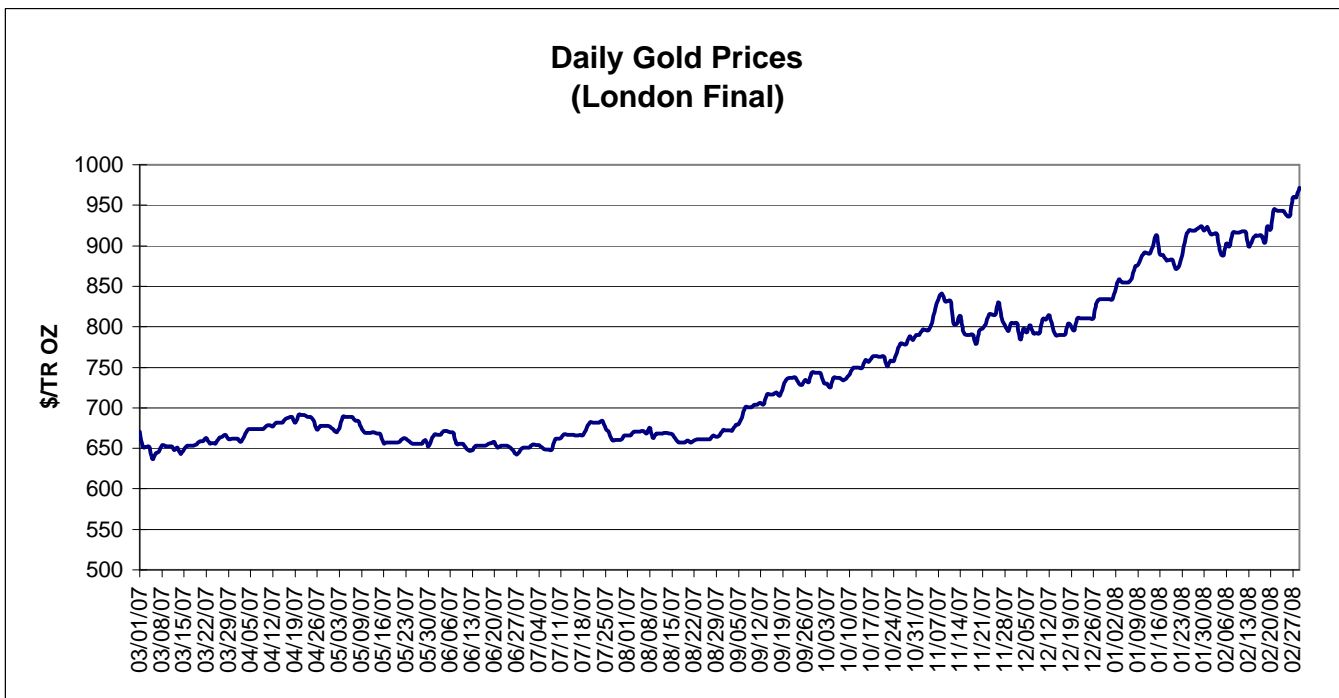
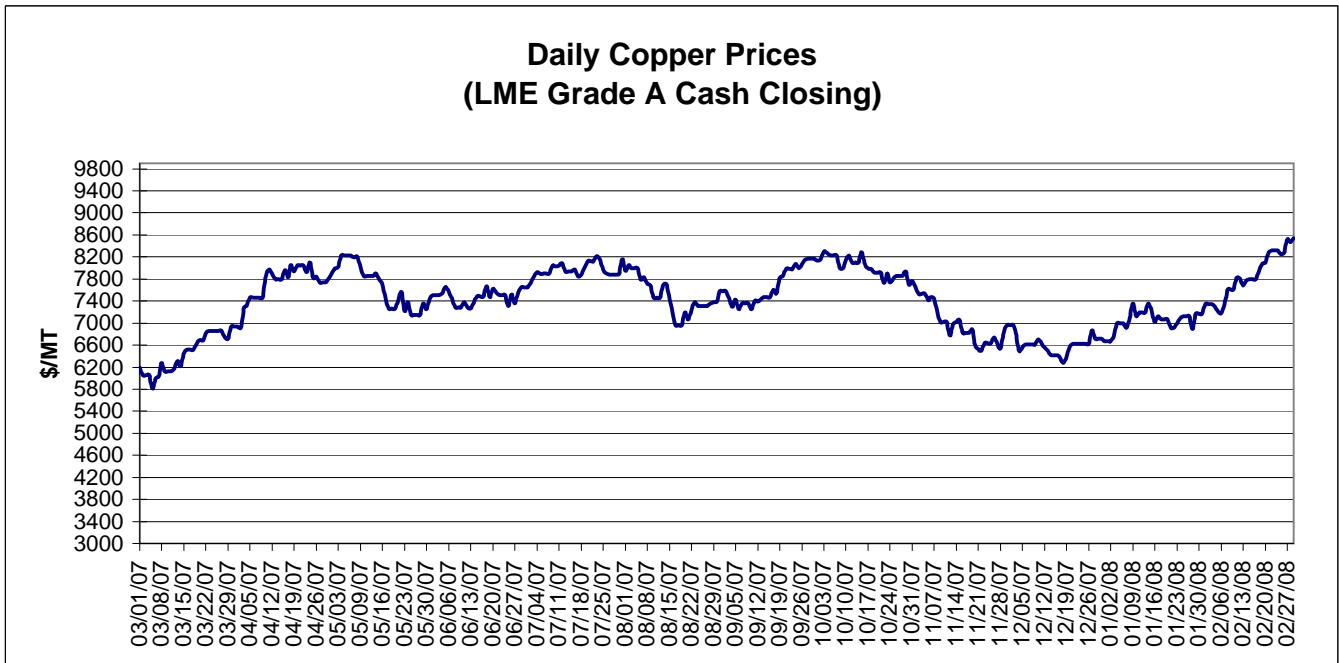


**MONTHLY RAW STEEL PRODUCTION**



\*Steel in the first solid state after melting suitable for further processing or sale, including ingots, steel for castings and strand or pressure cast blooms, slabs, or other product forms.

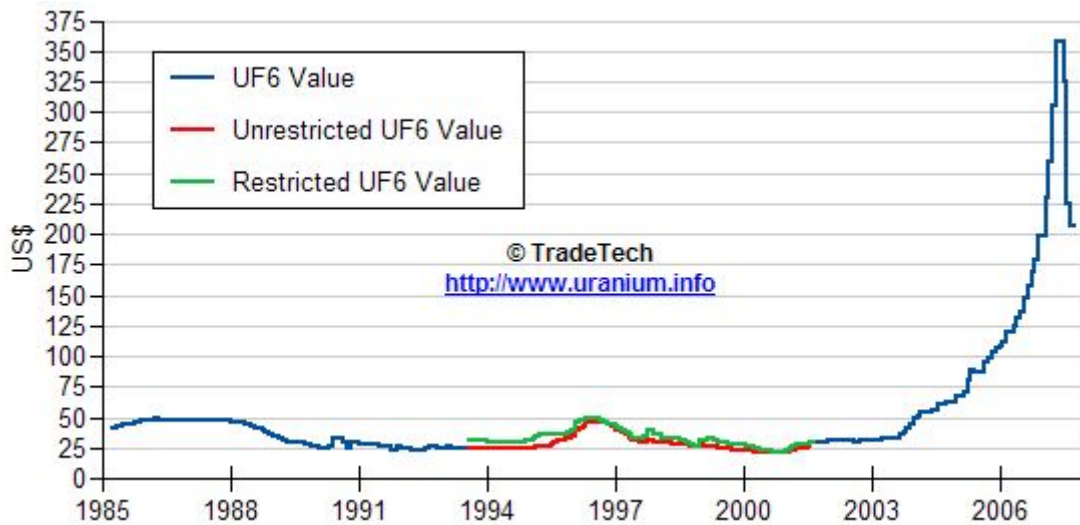
\*\* Based on tonnage capability to produce raw steel for a sustained full order book.



Data reflect closings on weekends and holidays.

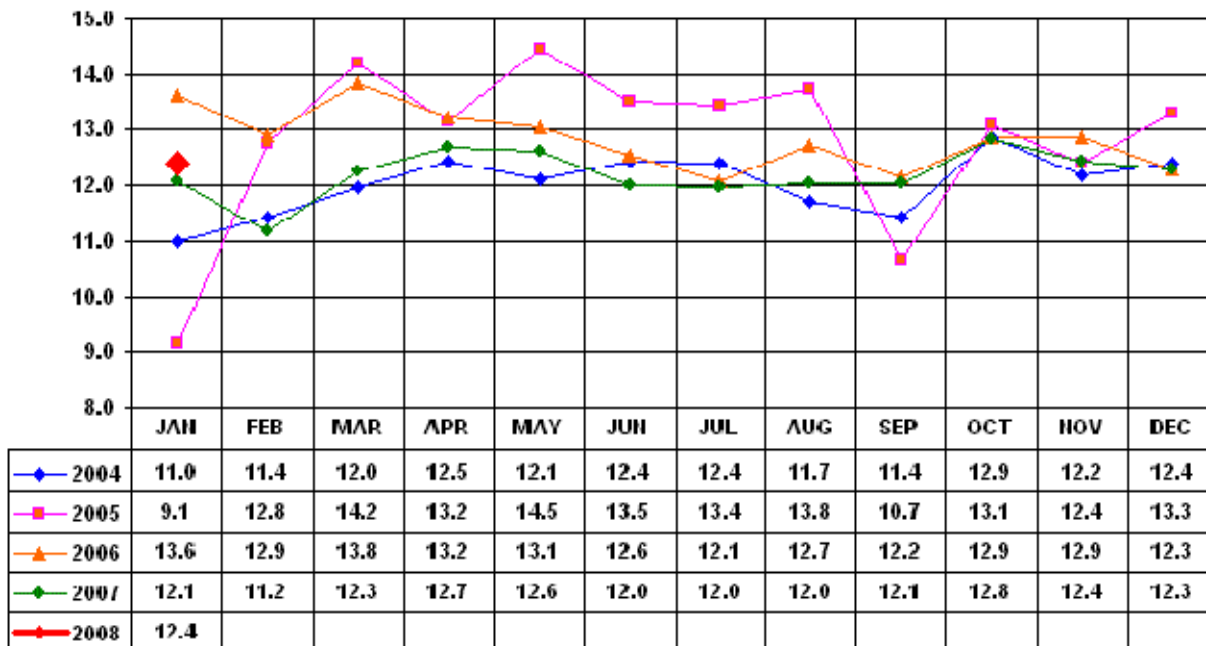
Source: Platts Metals Week

### Trade Tech's Uranium (UF6) Monthly Spot Prices (US\$/kg as UF6)



Source: Trade Tech, Uranium Info Website – <http://www.uranium.info>

### Coal and Coke Monthly Tonnage Indicator for Internal U.S. Waterways



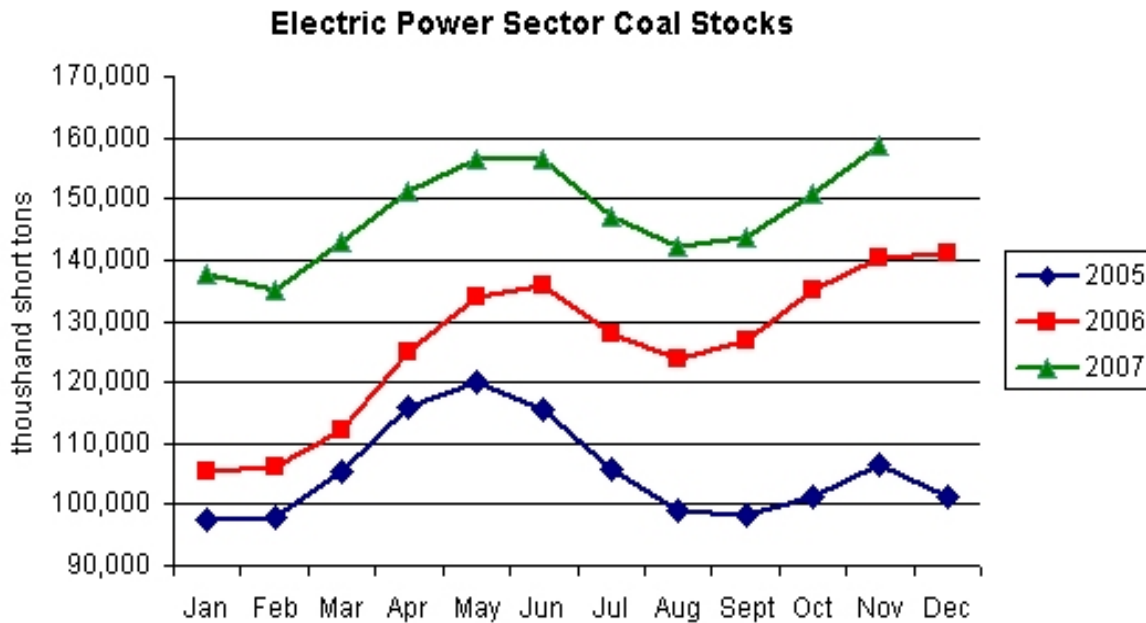
Source: U.S. Army Corps of engineers, Waterborne Commerce Statistics Center

### EIA Weekly Spot Coal Prices

The following average spot coal prices appear in the graphic below, for the previous and most recent weeks:

Week Ended	Central Appalachia 12,500 Btu, 1.2 SO2	Northern Appalachia 13,000 Btu, <3.0 SO2	Illinois Basin 11,800 Btu, 5.0 SO2	Powder River Basin 8,800 Btu, 0.8 SO2	Uinta Basin 11,700 Btu, 0.8 SO2
25-Jan-08	\$59.90	\$63.00	\$34.00	\$12.30	\$33.00
01-Feb-08	\$59.90	\$63.00	\$36.00	\$12.55	\$33.00
08-Feb-08	\$59.90	\$70.00	\$36.00	\$13.10	\$33.00
15-Feb-08	\$66.95	\$70.00	\$46.80	\$13.10	\$33.00
22-Feb-08	\$84.30	\$70.00	\$46.80	\$13.10	\$33.00
29-Feb-08	\$84.30	\$78.00	\$46.80	\$14.05	\$40.00

Source: Energy Information Administration (from Platts *Coal Outlook*, "Weekly Price Survey")



Source: Energy Information Administration