
National Mining Association

Weekly Statistical Summary

April 27, 2007 Edition
(Data for Week Ending April 21, 2007)

Prepared by
National Mining Association



Suite 500 East, 101 Constitution Avenue, NW
Washington, DC, 20001
Phone (202) 463-2600
Visit us at <http://www.nma.org>

NMA Weekly Statistical Summary

Vol. 45, No. 16
Dated 04/27/07

PRODUCTION, CONSUMPTION & TRADE						
	Week Ended			Cumulative Jan 1 to		
	04/21/07	04/22/06	% Chng	04/21/07	04/22/06	% Chng
EIA Coal Production (000 Tons):						
Week Ended/Year to Date	21,601	23,299	-7.3%	350,686	358,387	-2.1%
52 Weeks Ended	1,152,001	1,134,721	1.5%			
Month Ended -- March						
	97,349	101,485	-4.1%	285,198	289,131	-1.4%
MONTH ENDED AND CUMULATIVE NUMBERS ARE PRELIMINARY AND SUBJECT TO CHANGE						
DOC Bituminous Coal Trade (000 Tons)						
Exports:	February 07/06			Jan - Feb 07/06		
			% Chng			% Chng
Metallurgical	1,874	1,987	-5.7%	3,950	4,168	-5.2%
Steam	775	648	19.6%	3,005	2,602	15.5%
Imports:	2,656	2,715	-2.2%	5,501	5,747	-4.3%
Week Ended						
	04/21/07	04/22/06	% Chng	04/21/07	04/22/06	% Chng
EEl Electric Output (Mil. Kwh)	68,400	69,104	-1.0%	1,208,126	1,158,570	4.3%
AISI Raw Steel Output (000 Tons)	2,043	2,189	-6.7%	31,507	34,028	-7.4%
EIA U.S. PETROLEUM DATA						
4-Week Averages 000 Barrels per Day						
Week Ending						
	04/20/07	04/20/06	% Chng	Cumulative Daily Averages		
PETROLEUM SUPPLY:				2007	2006	% Chng
Domestic Crude	5,169	5,051	2.3	5,221	5,042	3.6
Net Imports (Incl. SPR)	9,979	9,781	2.0	9,876	9,780	1.0
SPR Stocks W/D or Added	-15	-55	--	-4	-25	--
Other Stocks W/D or added	-217	-127	--	-218	-202	--
Natural Gas Liquids Prod.	2,353	2,216	6.2	2,373	2,067	14.8



NMA

THE AMERICAN RESOURCE

National Mining Association Web Site: [http:// www.nma.org](http://www.nma.org)

EIA Estimated Weekly U.S. Coal Production Overview (Thousand Short Tons)

Coal-Producing Region and State	Week Ended			Year To Date			52 Weeks Ended		
	4/21/2007	4/14/2007	4/22/2006	4/21/2007	4/21/2006	Percent Change	4/21/2007	4/22/2006	Percent Change
Alabama	371	405	373	6,495	6,629	-2.0	18,886	20,716	-8.8
Alaska	25	28	31	408	426	-4.3	1,407	1,248	12.7
Arizona	143	156	141	2,690	2,501	7.6	8,405	10,562	-20.4
Arkansas	1	1	*	8	4	95.8	26	6	354.7
Colorado	708	773	919	11,826	9,638	22.7	38,413	35,648	7.8
Illinois	597	653	621	9,765	10,036	-2.7	31,895	31,700	0.6
Indiana	658	719	706	10,772	11,069	-2.7	35,421	34,768	1.9
Kansas	8	9	7	107	80	33.5	453	207	118.9
Kentucky Total	2,143	2,342	2,411	35,367	39,080	-9.5	116,567	121,621	-4.2
Eastern	1,608	1,757	1,890	26,889	30,260	-11.1	89,662	94,663	-5.3
Western	535	585	521	8,478	8,820	-3.9	26,905	26,959	-0.2
Louisiana	19	19	83	847	990	-14.4	3,963	3,889	1.9
Maryland	96	105	113	1,761	1,765	-0.2	5,049	5,315	-5.0
Mississippi	97	86	81	1,077	1,175	-8.4	3,691	3,643	1.3
Missouri	6	6	9	61	181	-66.1	274	605	-54.7
Montana	746	815	857	12,049	11,992	0.5	41,777	40,448	3.3
New Mexico	466	509	591	7,644	7,627	0.2	25,918	28,087	-7.7
North Dakota	487	532	533	8,826	9,452	-6.6	29,785	29,968	-0.6
Ohio	442	483	432	7,399	7,491	-1.2	22,615	24,562	-7.9
Oklahoma	37	41	40	620	690	-10.2	1,928	1,978	-2.5
Pennsylvania Total	1,134	1,239	1,410	18,695	21,158	-11.6	63,600	67,143	-5.3
Anthracite	25	28	28	415	489	-15.1	1,440	1,677	-14.1
Bituminous	1,109	1,211	1,382	18,280	20,670	-11.6	62,160	65,466	-5.0
Tennessee	52	57	56	866	930	-6.9	2,740	3,140	-12.7
Texas	851	929	920	13,640	13,501	1.0	45,567	45,882	-0.7
Utah	431	470	506	6,953	8,414	-17.4	24,545	25,418	-3.4
Virginia	533	582	580	9,008	9,647	-6.6	29,208	28,615	2.1
Washington	-	-	63	-	961	-100.0	1,619	4,596	-64.8
West Virginia Total	2,738	2,992	3,133	45,656	49,083	-7.0	148,343	154,880	-4.2
Northern	848	926	915	14,300	14,226	0.5	42,740	43,768	-2.3
Southern	1,890	2,065	2,218	31,356	34,857	-10.0	105,603	111,112	-5.0
Wyoming	8,813	8,893	8,681	138,146	133,868	3.2	449,907	410,075	9.7
Appalachian Total	6,974	7,620	7,987	116,769	126,962	-8.0	380,103	399,034	-4.7
Interior Total	2,808	3,047	2,989	45,375	46,547	-2.5	150,123	149,637	0.3
Western Total	11,818	12,177	12,322	188,542	184,878	2.0	621,776	586,050	6.1
East of Miss. River	8,862	9,663	9,917	146,861	158,062	-7.1	478,014	496,105	-3.6
West of Miss. River	12,739	13,181	13,382	203,825	200,325	1.7	673,987	638,617	5.5
Bituminous and Lignite	21,575	22,817	23,271	350,271	357,899	-2.1	1,150,561	1,133,044	1.5
Anthracite	25	28	28	415	489	-15.1	1,440	1,677	-14.1
U.S. Total	21,601	22,844	23,299	350,686	358,387	-2.1	1,152,001	1,134,721	1.5
Railroad Cars Loaded	138,990	148,309	143,653	2,249,684	2,269,234	-0.9	7,435,807	7,179,561	3.6

Source: Energy Information Administration



Volume 75 No. 16

OUTPUT FOR WEEK ENDED - Apr 21, 2007

Apr 25, 2007

The net available amount of electric energy distributed by the Total Electric Utility Industry+ for the week ended Saturday, **Apr 21, 2007** was **68,400** gigawatthours (GWh), according to the Edison Electric Institute. This is equivalent to **180** on the weekly electric output index.

WEEKLY ELECTRIC OUTPUT BY GEOGRAPHIC DIVISION
(48 CONTIGUOUS STATES)

	Week Ended April 21		52 Weeks Ended April 21	
	GWh Output	% Increase Over Corresponding Week of 2006	GWh Output	% Increase Over Corresponding Period of 2006
New England	2,370	8.7	133,245	-1.0
Mid-Atlantic	8,061	9.7	450,583	-0.4
Central Industrial	12,339	6.2	706,073	0.2
West Central	5,937	1.7	346,893	0.4
Southeast	17,871	-4.9	1,084,121	0.9
South Central	9,418	-18.0	606,587	2.3
Rocky Mountain	4,268	3.1	263,739	3.8
Pacific Northwest	2,840	3.4	153,896	2.8
Pacific Southwest	5,296	6.6	293,285	1.3
Total United States	68,400	-1.0	4,038,423	1.0

WEEKLY ELECTRIC OUTPUT IN PREVIOUS WEEKS--GWh

Week Ended	2007	Week Ended	2006	% Inc. (07/06)	52 Weeks Ended	2007	% Inc. (07/06)
Mar 31	69,649	Apr 01	69,031	0.9	Mar 31	4,034,632	1.1
Apr 07	70,382	Apr 08	68,696	2.5	Apr 07	4,036,319	1.1
Apr 14	70,367	Apr 15	67,559	4.2	Apr 14	4,039,127	1.1
Apr 21	68,400	Apr 22	69,104	-1.0	Apr 21	4,038,423	1.0
Apr 21	1,208,126	Apr 22	1,158,570	4.3	YEAR TO DATE, FIRST 16 WEEKS		

WEEKLY ELECTRIC OUTPUT INDEX--TOTAL U.S.*
SEASONALLY ADJUSTED 1982 = 100

Week Ended	2007	Week Ended	2006	Week Ended	2005
Mar 31	178	Apr 01	176	Apr 02	176
Apr 07	183	Apr 08	178	Apr 09	172
Apr 14	186	Apr 15	177	Apr 16	170
Apr 21	180	Apr 22	180	Apr 23	174

* Excludes Alaska and Hawaii

+ Includes investor-owned companies, cooperatives and government-owned utilities.

Copyright © 2007 Edison Electric Institute. All rights reserved.

WEEKLY ELECTRIC OUTPUT BY GEOGRAPHIC DIVISION (48 CONTIGUOUS STATES)

	Week Ended			NMA CUMULATIVE JANUARY 1 to			52 Weeks Ended		
	21-Apr 2007 GWh Output	22-Apr 2006 GWh Output	% Increase Over Corresponding Week of 2006	21-Apr 2007 GWh Output	22-Apr 2006 GWh Output	% Increase Over Corresponding Week of 2006	21-Apr 2007 GWh Output	22-Apr 2006 GWh Output	% Increase Over Corresponding Week of 2006
New England	2,370	2,180	8.7%	41,494	40,072	3.5%	133,245	134,559	-1.0%
Mid-Atlantic	8,061	7,345	9.7%	138,062	131,228	5.2%	450,583	452,592	-0.4%
Central Industrial	12,339	11,618	6.2%	221,449	210,262	5.3%	706,073	704,856	0.2%
West Central	5,937	5,840	1.7%	104,425	101,680	2.7%	346,893	345,530	0.4%
Southeast	17,871	18,784	-4.9%	323,935	311,905	3.9%	1,084,121	1,074,379	0.9%
South Central	9,418	11,481	-18.0%	166,505	158,290	5.2%	606,587	593,163	2.3%
Rocky Mountain	4,268	4,142	3.0%	73,766	70,650	4.4%	263,739	253,963	3.8%
Pacific Northwest	2,840	2,746	3.4%	52,597	50,074	5.0%	153,896	149,662	2.8%
Pacific Southwest	<u>5,296</u>	<u>4,968</u>	6.6%	<u>85,892</u>	<u>84,411</u>	1.8%	<u>293,285</u>	<u>289,583</u>	1.3%
Total United States *	68,400	69,104	-1.0%	1,208,125	1,158,572	4.3%	4,038,422	3,998,287	1.0%

Notes: EEI output data are an estimate of electricity load made available for distribution derived as weekly net generation + purchases from non-utilities + net imports - exports - sales for resale. It is not meant to be a measure of electricity generation for the U.S. EEI survey data represent the majority of national distribution (large utilities, large government power projects, some independent and large municipal power projects). The remaining segment of the industry (smaller producers) is estimated. Non-utility generation is captured via direct sales to utilities.

* Excludes Alaska and Hawaii

** Less than one-tenth of one percent

SOURCE: Edison Electric Institute (EEI), *Weekly Electric Output Report*.

AMERICAN IRON AND STEEL INSTITUTE
 1140 Connecticut Avenue, Suite 705
 Washington, D.C. 20036

April 23 2007

ESTIMATED WEEKLY RAW STEEL* PRODUCTION

<u>Period</u>	Thousand <u>Net Tons</u>	Percent Change from Previous <u>Period</u>	Percent Capability <u>Utilization**</u>	<u>Production by District</u>	
				<u>Week Ending</u>	
				<u>Apr 21</u>	<u>Apr 14</u>
<u>Week Ending</u>					
				North East Coast	120 125
				Pgh/Youngstown	224 227
				Lake Erie	95 96
				Detroit	109 116
				Indiana/Chicago	522 502
				Midwest	239 256
				Southern	639 673
				Western	<u>95</u> <u>92</u>
				Total	2043 2087
<u>Year-to-Date+</u>					
April 21, 2007	2,043	-2.1	85.4		
April 21, 2006	2,189	-6.6	91.4		
April 14, 2007	2,087	3.4	87.2		
April 21, 2007	31,507	-7.4	83.9		
April 21, 2006	34,028	-	89.6		

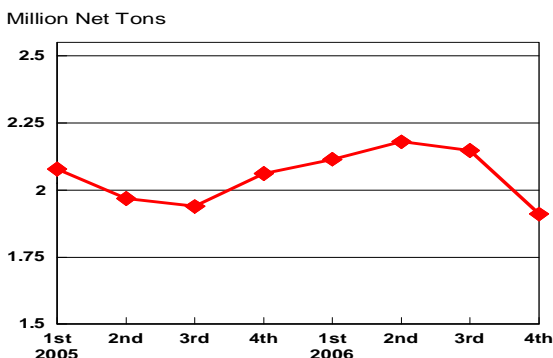
*Raw steel production tonnage included in this report is estimated based on a sampling of steel producers. Therefore, this report should be used primarily to assess production trends. The AISI production report "AIS 7," produced monthly and available by subscription, provides a more accurate summary of steel production based on data supplied by companies representing approximately 75% of U.S. production capacity.

+Includes revisions for previous months

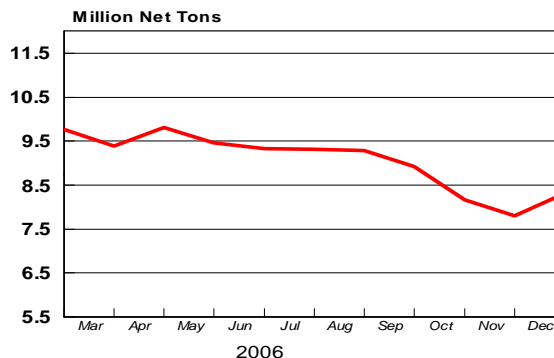
NOTE: Capability for the First Quarter 2007 is approximately 31.2 million net tons vs 30.5 million net tons for the same period last year, and 30.7 million tons for the fourth quarter of 2006.

Capability -	2003 approx.	2004	2005	2006	2007
	2.3 million tons/week	2.2	2.3	2.4	2.4

Average Weekly Raw Steel Production

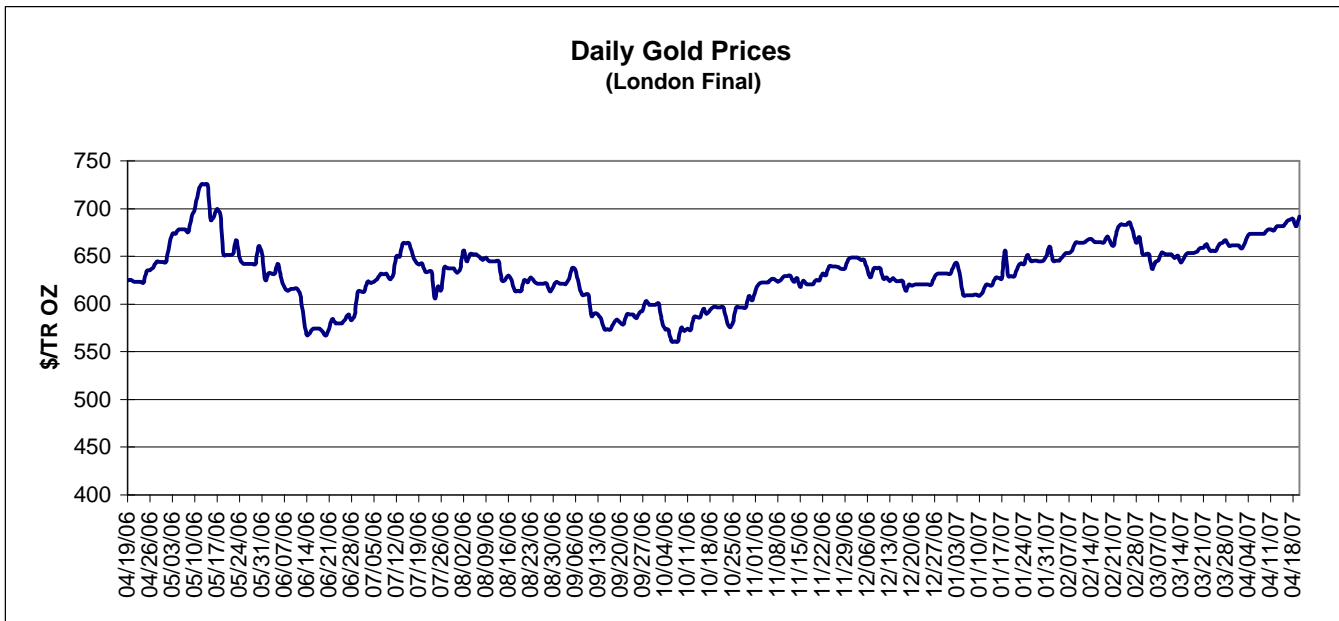
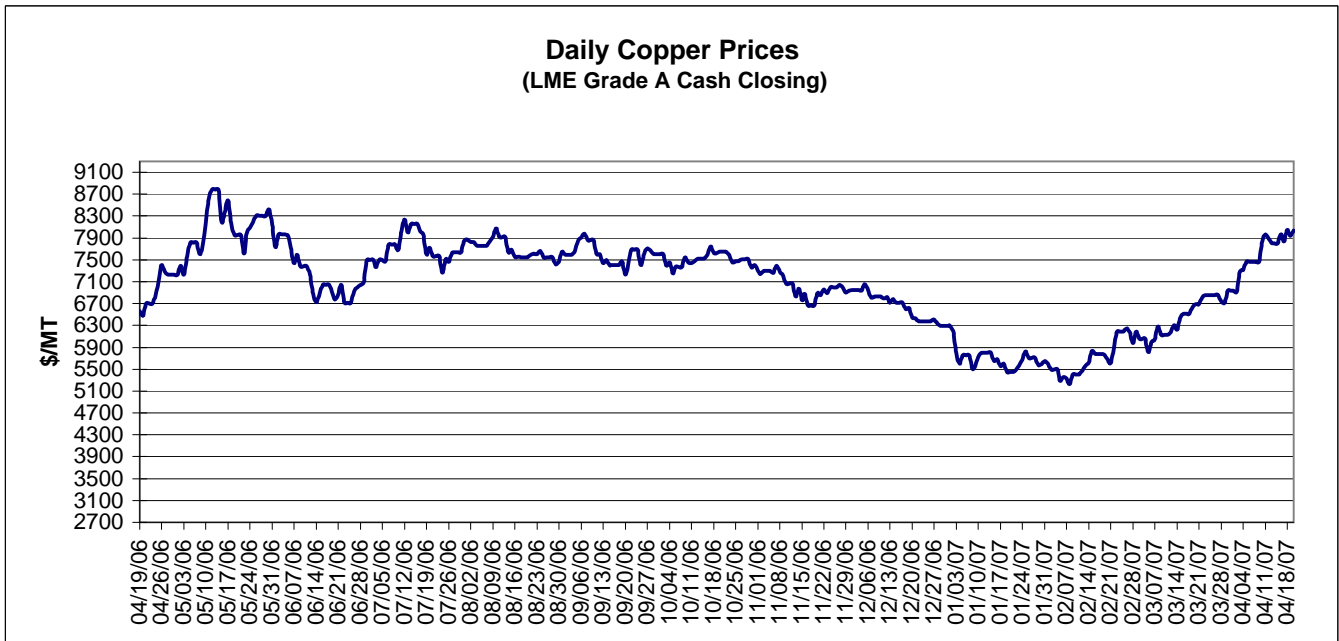


MONTHLY RAW STEEL PRODUCTION



*Steel in the first solid state after melting suitable for further processing or sale, including ingots, steel for castings and strand or pressure cast blooms, slabs, or other product forms.

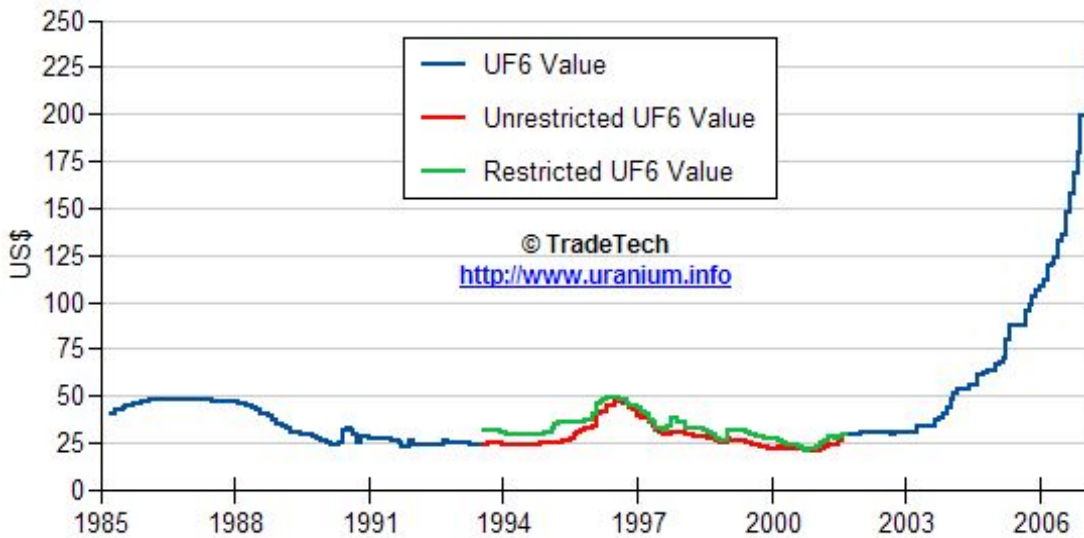
** Based on tonnage capability to produce raw steel for a sustained full order book.



Data reflect closings on weekends and holidays.

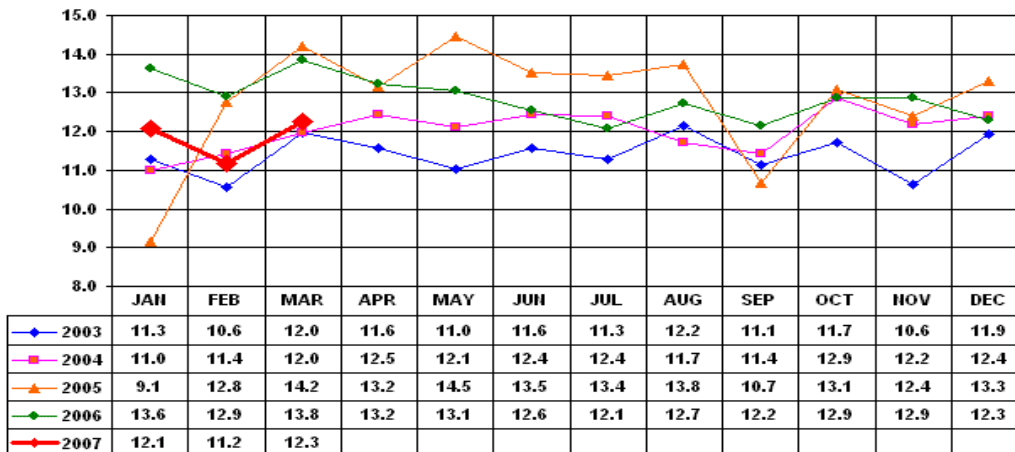
Source: Platts Metals Week

Trade Tech's Uranium (UF6) Monthly Spot Prices (US\$/kg as UF6)



Source: Trade Tech, Uranium Info Website – <http://www.uranium.info>

Coal and Coke Monthly Tonnage Indicator for Internal U.S. Waterways



Source: U.S. Army Corps of engineers, Waterborne Commerce Statistics Center