
National Mining Association

Weekly Statistical Summary

April 4, 2008 Edition
(Data for Week Ending March 29, 2008)

Prepared by
National Mining Association



Suite 500 East, 101 Constitution Avenue, NW
Washington, DC, 20001
Phone (202) 463-2600
Visit us at <http://www.nma.org>

NMA Weekly Statistical Summary

Vol. 46, No. 13
Dated 04/04/08

PRODUCTION, CONSUMPTION & TRADE						
	Week Ended			* Cumulative Jan 1 to		
	03/29/08	03/31/07	% Chng	03/29/08	03/29/07	% Chng
EIA Coal Production (000 Tons):						
Week Ended/Year to Date	23,249	19,670	18.2%	289,771	281,123	3.1%
52 Weeks Ended	1,149,438	1,157,782	-0.7%			
* Due to leap year, 2008 cumulative reflects one extra day of tonnage.						
Month Ended -- February	February 08/07		% Chng	Jan - Feb 08/07		% Chng
	95,567	88,209	8.3%	196,280	187,570	4.6%
MONTH ENDED AND CUMULATIVE NUMBERS ARE PRELIMINARY AND SUBJECT TO CHANGE						
DOC Bituminous Coal Trade (000 Tons)						
Exports:	January 08/07		% Chng	Jan - Jan 08/07		% Chng
Metallurgical	2,673	2,076	28.8%	2,673	2,076	28.8%
Steam	2,222	2,230	-0.4%	2,222	2,230	-0.4%
Imports:	2,381	2,844	-16.3%	2,381	2,844	-16.3%
EIA Electric Output (Mil. Kwh)						
	Week Ended			* Cumulative Jan 1 to		
	03/29/08	03/31/07	% Chng	03/29/08	03/31/07	% Chng
EI Electric Output (Mil. Kwh)	72,457	69,649	4.0%	1,007,627	998,976	0.9%
AISI Raw Steel Output (000 Tons)	2,144	2,073	3.4%	26,851	25,588	4.9%
EIA U.S. PETROLEUM DATA						
4-Week Averages						
000 Barrels per Day						
PETROLEUM SUPPLY:	Week Ending			Cumulative Daily Averages		
	03/28/08	03/28/07	% Chng	2008	2007	% Chng
Domestic Crude	5,098	5,177	-1.5	--	--	--
Net Imports (Incl. SPR)	9,773	10,252	-4.7	--	--	--
SPR Stocks W/D or Added	-37	0	--	--	--	--
Other Stocks W/D or added	-490	-423	--	--	--	--
Natural Gas Liquids Prod.	2,471	2,425	1.9	--	--	--
Cumulative daily petroleum averages will be shown beginning with week ending April 4, 2008 data.						



NMA
THE AMERICAN RESOURCE

National Mining Association Web Site: [http:// www.nma.org](http://www.nma.org)

EIA Estimated Weekly U.S. Coal Production Overview (Thousand Short Tons)

Coal-Producing Region and State	Week Ended			Year to Date			52 Weeks Ended		
	3/29/2008	3/22/2008	3/31/2007	3/29/2008	3/29/2007	Percent Change	3/29/2008	3/31/2007	Percent Change
Alabama	405	399	373	4,996	5,123	-2.5	19,312	18,695	3.3
Alaska	26	25	33	314	448	-29.9	1,183	1,546	-23.5
Arizona	126	124	146	1,573	2,012	-21.8	7,514	8,172	-8.0
Arkansas	2	2	1	26	17	57.1	92	36	154.9
Colorado	736	724	578	9,058	7,836	15.6	37,454	37,295	0.4
Illinois	707	696	695	8,691	9,501	-8.5	31,569	34,164	-7.6
Indiana	743	732	629	9,173	8,607	6.6	35,431	35,036	1.1
Kansas	10	10	8	125	105	18.6	439	472	-7.2
Kentucky Total	2,384	2,347	2,154	29,408	29,500	-0.3	114,667	118,919	-3.6
Eastern	1,741	1,714	1,611	21,485	22,082	-2.7	86,040	91,407	-5.9
Western	643	634	543	7,922	7,418	6.8	28,626	27,512	4.1
Louisiana	96	117	16	1,138	700	62.6	3,496	3,940	-11.3
Maryland	43	42	43	525	591	-11.1	2,220	4,222	-47.4
Mississippi	74	82	99	741	848	-12.6	3,413	3,751	-9.0
Missouri	5	4	4	56	58	-4.0	233	300	-22.2
Montana	870	857	728	10,731	9,865	8.8	44,058	42,327	4.1
New Mexico	478	471	396	5,909	5,428	8.9	24,848	25,536	-2.7
North Dakota	602	593	557	7,445	7,652	-2.7	29,288	30,299	-3.3
Ohio	485	478	405	5,990	5,539	8.1	22,919	22,122	3.6
Oklahoma	39	38	30	478	410	16.6	1,710	1,844	-7.3
Pennsylvania Total	1,351	1,330	1,262	16,644	17,299	-3.8	64,272	66,727	-3.7
Anthracite	36	36	29	445	398	11.7	1,598	1,536	4.0
Bituminous	1,315	1,294	1,233	16,199	16,901	-4.2	62,674	65,191	-3.9
Tennessee	50	49	51	614	704	-12.7	2,545	2,754	-7.6
Texas	847	834	716	10,442	9,694	7.7	42,498	44,544	-4.6
Utah	466	459	439	5,744	6,017	-4.5	23,939	25,202	-5.0
Virginia	526	518	525	6,477	7,179	-9.8	24,566	29,218	-15.9
Washington	--	--	--	--	--	--	0	1,805	-100.0
West Virginia Total	3,161	3,112	2,884	38,962	39,457	-1.3	152,136	152,548	-0.3
Northern	999	984	848	12,261	11,601	5.7	42,437	42,640	-0.5
Southern	2,162	2,129	2,036	26,701	27,856	-4.1	109,699	109,907	-0.2
Wyoming	9,017	9,164	6,897	114,511	106,531	7.5	459,637	446,310	3.0
Appalachian Total	7,762	7,642	7,154	95,692	97,974	-2.3	374,010	387,693	-3.5
Interior Total	3,166	3,149	2,742	38,794	37,359	3.8	147,506	151,597	-2.7
Western Total	12,321	12,417	9,774	155,285	145,789	6.5	627,922	618,492	1.5
East of Miss. River	9,930	9,785	9,120	122,220	124,349	-1.7	473,049	488,155	-3.1
West of Miss. River	13,320	13,422	10,550	167,550	156,774	6.9	676,389	669,627	1.0
Bituminous and Lignite	23,213	23,172	19,641	289,326	280,724	3.1	1,147,840	1,156,246	-0.7
Anthracite	36	36	29	445	398	11.7	1,598	1,536	4.0
U.S. Total	23,249	23,207	19,670	289,771	281,123	3.1	1,149,438	1,157,782	-0.7
Railroad Cars Loaded	152,489	151,937	122,555	1,898,956	1,823,324	4.1	7,479,664	7,436,740	0.6

Source: Energy Information Administration



WEEKLY ELECTRIC OUTPUT

Essential Energy Information from EEL's Statistics Department

Volume 76 No. 13

OUTPUT FOR WEEK ENDED - Mar 29, 2008

Apr 02, 2008

The net available amount of electric energy distributed by the Total Electric Utility Industry+ for the week ended Saturday, Mar 29, 2008 was 72,457 gigawatthours (GWh), according to the Edison Electric Institute. This is equivalent to 188 on the weekly electric output index.

WEEKLY ELECTRIC OUTPUT BY GEOGRAPHIC DIVISION

(48 CONTIGUOUS STATES)

	Week Ended March 29		52 Weeks Ended March 29	
	GWh Output	% Increase Over Corresponding Week of 2007	GWh Output	% Increase Over Corresponding Period of 2007
New England	2,431	2.6	133,739	0.7
Mid-Atlantic	8,172	5.2	456,885	1.8
Central Industrial	13,012	6.5	724,515	2.9
West Central	6,161	2.6	354,429	2.3
Southeast	19,476	2.4	1,108,938	2.4
South Central	10,107	3.0	598,144	-1.9
Rocky Mountain	4,422	5.0	279,729	6.3
Pacific Northwest	3,417	15.3	163,596	6.6
Pacific Southwest	5,259	-0.3	289,289	-1.3
Total United States	72,457	4.0	4,109,264	1.8

WEEKLY ELECTRIC OUTPUT IN PREVIOUS WEEKS--GWh

Week Ended	2008	Week Ended	2007	% Inc. (08/07)	52 Weeks Ended	2008	% Inc. (08/07)
Mar 08	75,181	Mar 10	74,786	0.5	Mar 08	4,103,243	1.7
Mar 15	72,894	Mar 17	70,517	3.4	Mar 15	4,105,620	1.7
Mar 22	71,691	Mar 24	70,855	1.2	Mar 22	4,106,456	1.8
Mar 29	72,457	Mar 31	69,649	4.0	Mar 29	4,109,264	1.8
Mar 29	1,007,627	Mar 31	998,976	0.9	YEAR TO DATE, FIRST 13 WEEKS		

WEEKLY ELECTRIC OUTPUT INDEX--TOTAL U.S.*

SEASONALLY ADJUSTED 1982 = 100

Week Ended	2008	Week Ended	2007	Week Ended	2006
Mar 08	187	Mar 10	184	Mar 11	174
Mar 15	182	Mar 17	175	Mar 18	174
Mar 22	182	Mar 24	180	Mar 25	183
Mar 29	188	Mar 31	178	Apr 01	176

* Excludes Alaska and Hawaii.

+ Includes investor-owned companies, cooperatives and government-owned utilities.

Copyright © 2008 Edison Electric Institute. All rights reserved.

WEEKLY ELECTRIC OUTPUT BY GEOGRAPHIC DIVISION (48 CONTIGUOUS STATES)

	Week Ended			NMA CUMULATIVE JANUARY WEEK ONE TO			52 Weeks Ended		
	29-Mar 2008 GWh Output	31-Mar 2007 GWh Output	% Increase Over Corresponding Week of 2007	29-Mar 2008 GWh Output	31-Mar 2007 GWh Output	% Increase Over Corresponding Week of 2007	29-Mar 2008 GWh Output	31-Mar 2007 GWh Output	% Increase Over Corresponding Week of 2007
New England	2,431	2,369	2.6%	33,589	34,296	-2.1%	133,739	132,812	0.7%
Mid-Atlantic	8,172	7,769	5.2%	112,074	113,857	-1.6%	456,885	448,828	1.8%
Central Industrial	13,012	12,218	6.5%	186,256	183,881	1.3%	724,515	703,876	2.9%
West Central	6,161	6,004	2.6%	88,396	86,185	2.6%	354,429	346,370	2.3%
Southeast	19,476	19,026	2.4%	270,250	267,972	0.9%	1,108,938	1,083,206	2.4%
South Central	10,107	9,814	3.0%	137,832	137,821	0.0%	598,144	609,694	-1.9%
Rocky Mountain	4,422	4,211	5.0%	62,813	60,515	3.8%	279,729	263,177	6.3%
Pacific Northwest	3,417	2,964	15.3%	48,491	43,973	10.3%	163,596	153,526	6.6%
Pacific Southwest	5,259	5,274	-0.3%	67,927	70,476	-3.6%	289,289	293,143	-1.3%
Total United States *	72,457	69,649	4.0%	1,007,628	998,976	0.9%	4,109,264	4,034,632	1.8%

Notes: EEl output data are an estimate of electricity load made available for distribution derived as weekly net generation + purchases from non-utilities + net imports - exports - sales for resale. It is not meant to be a measure of electricity generation for the U.S. EEl survey data represent the majority of national distribution (large utilities, large government power projects, some independent and large municipal power projects). The remaining segment of the industry (smaller producers) is estimated. Non-utility generation is captured via direct sales to utilities.

* Excludes Alaska and Hawaii

** Less than one-tenth of one percent

SOURCE: Edison Electric Institute (EEl), *Weekly Electric Output Report*.

AMERICAN IRON AND STEEL INSTITUTE
 1140 Connecticut Avenue, Suite 705
 Washington, D.C. 20036

March 31, 2008

ESTIMATED WEEKLY RAW STEEL* PRODUCTION

<u>Period</u>	<u>Thousand Net Tons</u>	<u>Percent Change from Previous Period</u>	<u>Percent Capability Utilization**</u>	<u>Production by District</u>		
				<u>Week Ending</u>		
				<u>Mar 29</u>	<u>Mar 22</u>	
<u>Week Ending</u>				North East Coast	192	184
				Pgh/Youngstown	220	218
Mar 29, 2008	2,144	1.2	89.9	Lake Erie	85	83
Mar 29, 2007	2,073	3.4	86.3	Detroit	109	115
Mar 22, 2008	2,118	1.5	88.8	Indiana/Chicago	528	506
				Midwest	260	271
<u>Year-to-Date+</u>				Southern	656	652
				Western	94	89
Mar 29, 2008	26,851	4.9	88.5	Total	2144	2118
Mar 29, 2007	25,588	-	83.0			

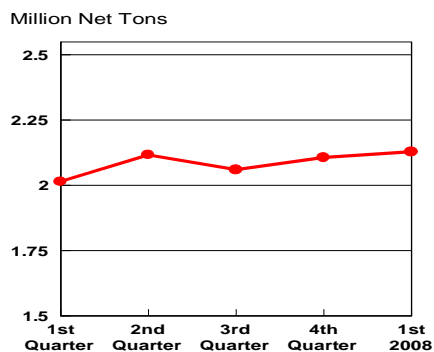
*Raw steel production tonnage included in this report is estimated based on a sampling of steel producers. Therefore, this report should be used primarily to assess production trends. The AISI production report "AIS 7," produced monthly and available by subscription, provides a more accurate summary of steel production based on data supplied by companies representing approximately 75% of U.S. production capacity.

+Includes revisions for previous months

NOTE: Capacity for the Fourth Quarter 2007 is approximately 31.3 million net tons vs 30.7 million net tons for the same period last year, and 30.1 million tons for the third quarter of 2007.

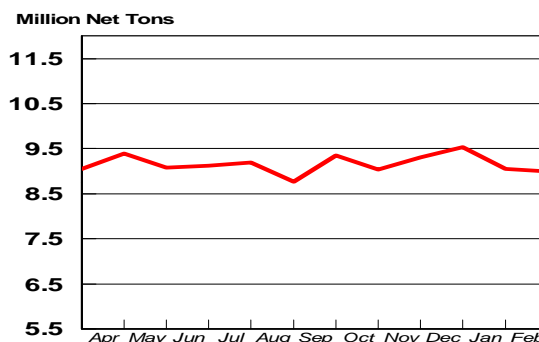
Capacity - 2003 approx. 2.3 million tons/week
 2004 2.2
 2005 2.3
 2006 2.4
 2007 2.4

Average Weekly Raw Steel Production



2007-2008

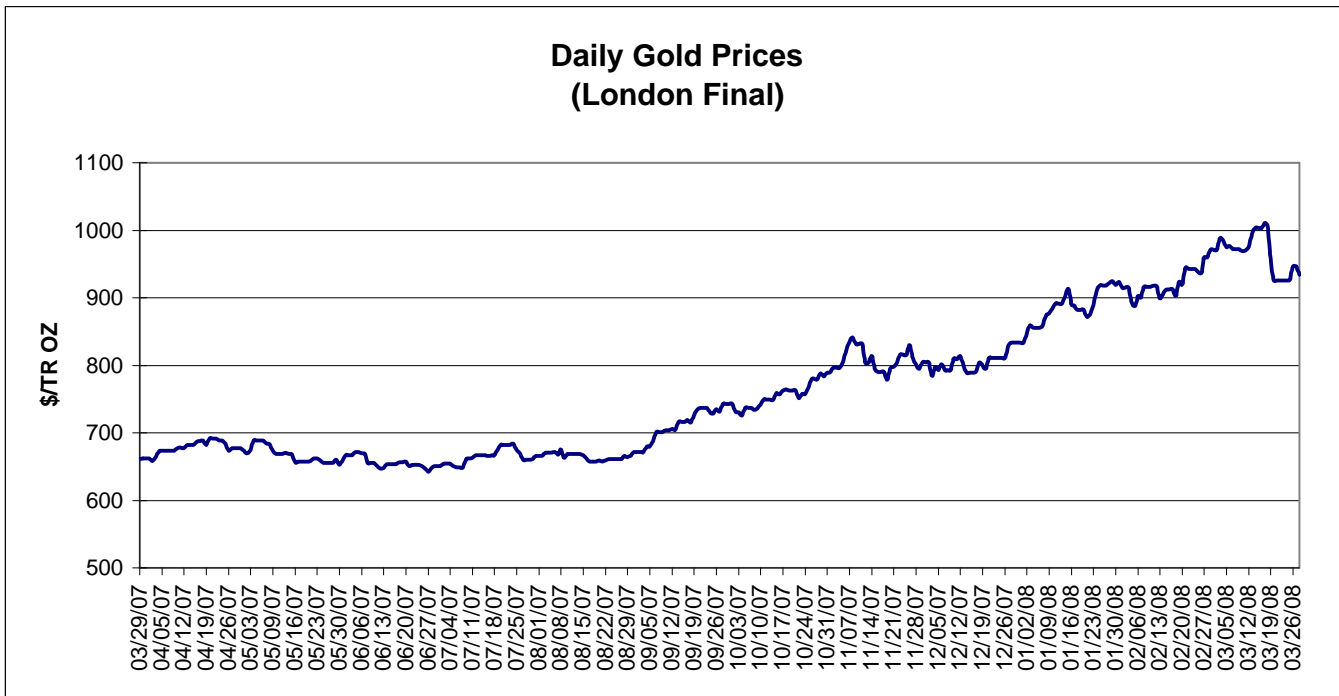
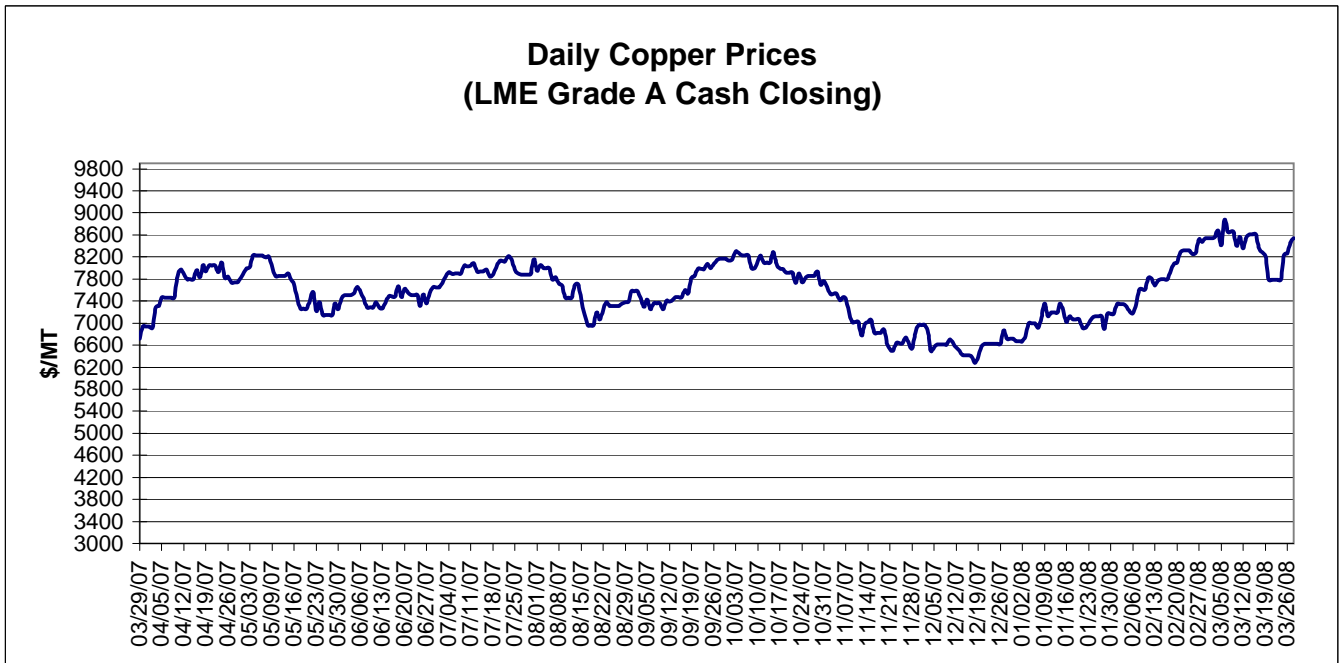
Monthly Raw Steel Production



2007-2008

*Steel in the first solid state after melting suitable for further processing or sale, including ingots, steel for castings and strand or pressure cast blooms, slabs, or other product forms.

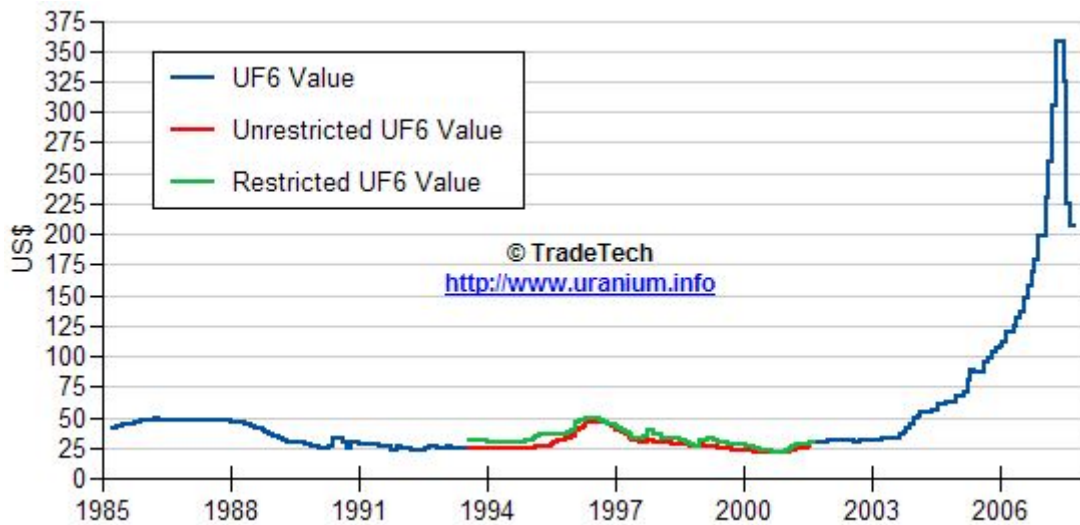
** Based on tonnage capability to produce raw steel for a sustained full order book.



Data reflect closings on weekends and holidays.

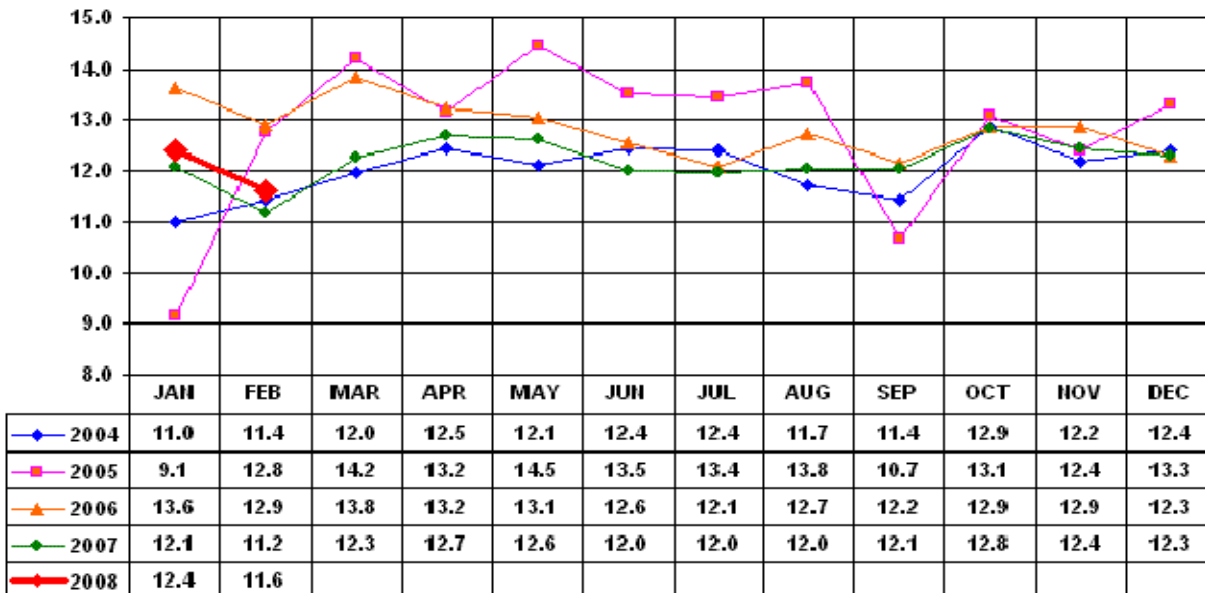
Source: Platts Metals Week

Trade Tech's Uranium (UF6) Monthly Spot Prices (US\$/kg as UF6)



Source: Trade Tech, Uranium Info Website – <http://www.uranium.info>

Coal and Coke Monthly Tonnage Indicator for Internal U.S. Waterways



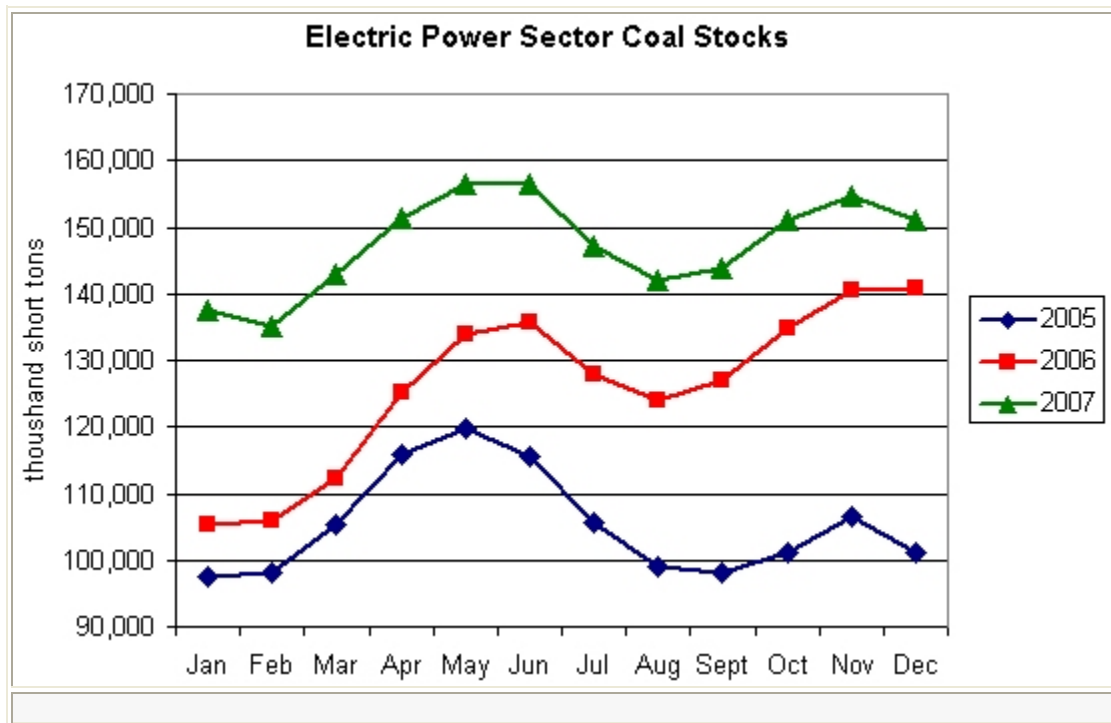
Source: U.S. Army Corps of engineers, Waterborne Commerce Statistics Center

EIA Weekly Spot Coal Prices

The following average spot coal prices appear in the graphic below, for the previous and most recent weeks:
(Dollars per Short Ton)

Week Ended	Central Appalachia 12,500 Btu, 1.2 SO2	Northern Appalachia 13,000 Btu, <3.0 SO2	Illinois Basin 11,800 Btu, 5.0 SO2	Powder River Basin 8,800 Btu, 0.8 SO2	Uinta Basin 11,700 Btu, 0.8 SO2
15-Feb-08	\$66.95	\$70.00	\$46.80	\$13.10	\$33.00
22-Feb-08	\$84.30	\$70.00	\$46.80	\$13.10	\$33.00
29-Feb-08	\$84.30	\$78.00	\$46.80	\$14.05	\$40.00
07-Mar-08	\$84.30	\$80.00	\$46.80	\$14.35	\$40.00
14-Mar-08	\$84.30	\$80.00	\$52.00	\$14.05	\$40.00
20-Mar-08	\$84.35	\$80.00	\$52.00	\$14.20	\$40.00
28-Mar-08	\$85.80	\$110.00	\$52.00	\$14.55	\$40.00

Source: Energy Information Administration (from *Platts Coal Outlook*, "Weekly Price Survey")



Source: Energy Information Administration