
National Mining Association

Weekly Statistical Summary

May 16, 2008 Edition
(Data for Week Ending May 10, 2008)

Prepared by
National Mining Association



Suite 500 East, 101 Constitution Avenue, NW
Washington, DC, 20001
Phone (202) 463-2600
Visit us at <http://www.nma.org>

NMA Weekly Statistical Summary

Vol. 46, No. 19
Dated 05/16/08

PRODUCTION, CONSUMPTION & TRADE						
	Week Ended			* Cumulative Jan 1 to		
	05/10/08	05/12/07	% Chng	05/10/08	05/12/07	% Chng
EIA Coal Production (000 Tons):						
Week Ended/Year to Date	22,802	21,198	7.6%	425,465	411,244	3.5%
52 Weeks Ended	1,154,603	1,150,796	0.3%			
* Due to leap year, 2008 cumulative reflects one extra day of tonnage.						
	April 08/07		% Chng	Jan - Apr 08/07		% Chng
Month Ended -- April	98,009	93,048	5.3%	393,309	378,948	3.8%
MONTH ENDED AND CUMULATIVE NUMBERS ARE PRELIMINARY AND SUBJECT TO CHANGE						
DOC Bituminous Coal Trade (000 Tons)						
	March 08/07		% Chng	Jan - Mar 08/07		% Chng
Exports:						
Metallurgical	3,745	2,769	35.2%	9,101	6,718	35.5%
Steam	2,901	1,292	124.5%	6,600	4,296	53.6%
Imports:	2,640	3,285	-19.6%	7,640	8,786	-13.0%
	Week Ended			* Cumulative Jan 1 to		
	05/10/08	05/12/07	% Chng	05/10/08	05/12/07	% Chng
EEl Electric Output (Mil. Kwh)	70,932	72,758	-2.5%	1,430,313	1,420,705	0.7%
AISI Raw Steel Output (000 Tons)	2,136	2,121	0.7%	39,590	38,278	3.4%
EIA U.S. PETROLEUM DATA						
4-Week Averages 000 Barrels per Day						
	Week Ending			Cumulative Daily Averages		
	05/09/08	05/09/07	% Chng	2008	2007	% Chng
PETROLEUM SUPPLY:						
Domestic Crude	5,107	5,224	-2.2	5,102	5,189	-1.7
Net Imports (Incl. SPR)	10,178	10,189	-0.1	9,767	9,957	-1.9
SPR Stocks W/D or Added	-35	-27	--	-40	-8	--
Other Stocks W/D or added	-432	-234	--	-272	-219	--
Natural Gas Liquids Prod.	2,473	2,415	2.4	2,323	2,335	-0.5



NMA

THE AMERICAN RESOURCE National Mining Association Web Site: [http:// www.nma.org](http://www.nma.org)

EIA Estimated Weekly U.S. Coal Production Overview (Thousand Short Tons)

Coal-Producing Region and State	Week Ended			Year to Date		Percent Change	52 Weeks Ended		Percent Change
	5/10/2008	5/3/2008	5/12/2007	5/10/2008	5/10/2007		5/10/2008	5/12/2007	
Alabama	407	401	349	7,355	7,220	1.9	19,579	18,573	5.4
Alaska	29	28	26	480	605	-20.7	1,193	1,517	-21.3
Arizona	122	120	153	2,277	2,929	-22.2	7,300	8,257	-11.6
Arkansas	2	2	1	36	25	43.3	93	44	111.1
Colorado	765	754	766	13,495	12,377	9.0	37,301	36,437	2.4
Illinois	691	681	667	12,699	13,505	-6.0	31,580	34,477	-8.4
Indiana	739	728	658	13,458	12,543	7.3	35,774	34,871	2.6
Kansas	11	11	9	190	157	20.5	451	485	-7.0
Kentucky Total	2,475	2,439	2,200	43,762	42,674	2.5	115,838	117,722	-1.6
Eastern	1,799	1,773	1,693	31,922	32,213	-0.9	86,329	90,267	-4.4
Western	675	666	507	11,840	10,462	13.2	29,509	27,456	7.5
Louisiana	60	19	14	1,454	783	85.7	3,729	3,613	3.2
Maryland	54	53	41	835	838	-0.3	2,284	3,799	-39.9
Mississippi	63	82	58	1,198	1,295	-7.5	3,433	3,762	-8.7
Missouri	5	5	4	87	85	3.2	238	270	-11.9
Montana	932	918	754	16,136	14,378	12.2	44,943	41,766	7.6
New Mexico	503	496	565	8,828	8,778	0.6	24,381	25,415	-4.1
North Dakota	575	567	514	10,782	10,740	0.4	29,545	30,219	-2.2
Ohio	506	499	389	8,927	7,873	13.4	23,526	21,892	7.5
Oklahoma	39	39	32	706	602	17.2	1,745	1,797	-2.9
Pennsylvania Total	1,381	1,362	1,261	24,657	24,857	-0.8	64,727	65,907	-1.8
Anthracite	42	41	30	688	576	19.5	1,664	1,538	8.2
Bituminous	1,339	1,320	1,231	23,969	24,281	-1.3	63,064	64,369	-2.0
Tennessee	54	53	47	929	987	-5.9	2,577	2,704	-4.7
Texas	898	886	774	15,654	14,319	9.3	43,069	43,728	-1.5
Utah	507	500	482	8,687	8,895	-2.3	23,995	25,086	-4.3
Virginia	496	489	538	9,353	10,398	-10.1	24,219	28,997	-16.5
Washington	--	--	--	--	--	--	0	1,432	-100.0
West Virginia Total	3,258	3,212	2,929	57,863	57,000	1.5	153,484	151,513	1.3
Northern	991	977	802	18,009	16,420	9.7	43,377	42,022	3.2
Southern	2,267	2,235	2,127	39,854	40,580	-1.8	110,107	109,490	0.6
Wyoming	8,231	8,210	7,967	165,618	157,379	5.2	459,600	446,512	2.9
Appalachian Total	7,955	7,841	7,247	141,840	141,387	0.3	376,725	383,651	-1.8
Interior Total	3,183	3,118	2,724	57,322	53,776	6.6	149,620	150,502	-0.6
Western Total	11,663	11,593	11,227	226,302	216,082	4.7	628,258	616,643	1.9
East of Miss. River	10,123	9,998	9,137	181,035	179,191	1.0	477,020	484,216	-1.5
West of Miss. River	12,679	12,555	12,062	244,429	232,053	5.3	677,583	666,580	1.7
Bituminous and Lignite	22,760	22,512	21,169	424,776	410,668	3.4	1,152,939	1,149,258	0.3
Anthracite	42	41	30	688	576	19.5	1,664	1,538	8.2
U.S. Total	22,802	22,553	21,198	425,465	411,244	3.5	1,154,603	1,150,796	0.3
Railroad Cars Loaded	151,108	148,211	135,383	2,789,647	2,663,560	4.7	7,530,119	7,418,300	1.5

Source: Energy Information Administration



WEEKLY ELECTRIC OUTPUT

Essential Energy Information from EEI's Statistics Department

Volume 76 No. 19

OUTPUT FOR WEEK ENDED - May 10, 2008

May 14, 2008

The net available amount of electric energy distributed by the Total Electric Utility Industry+ for the week ended Saturday, **May 10, 2008** was **70,932** gigawatthours (GWh), according to the Edison Electric Institute. This is equivalent to **179** on the weekly electric output index.

WEEKLY ELECTRIC OUTPUT BY GEOGRAPHIC DIVISION

(48 CONTIGUOUS STATES)

	Week Ended May 10		52 Weeks Ended May 10	
	GWh Output	% Increase Over Corresponding Week of 2007	GWh Output	% Increase Over Corresponding Period of 2007
New England	2,237	-4.2	133,379	0.1
Mid-Atlantic	7,674	-2.0	456,012	1.0
Central Industrial	11,703	-5.7	723,431	2.2
West Central	5,836	-4.6	354,157	2.0
Southeast	19,544	0.1	1,109,003	2.1
South Central	11,201	-1.5	599,780	-0.9
Rocky Mountain	4,633	-4.8	279,625	5.8
Pacific Northwest	2,927	7.2	165,418	7.2
Pacific Southwest	5,177	-7.1	289,415	-1.7
Total United States	70,932	-2.5	4,110,220	1.6

WEEKLY ELECTRIC OUTPUT IN PREVIOUS WEEKS--GWh

Week Ended	2008	Week Ended	2007	% Inc. (08/07)	52 Weeks Ended	2008	% Inc. (08/07)
Apr 19	68,770	Apr 21	68,400	0.5	Apr 19	4,111,551	1.8
Apr 26	70,763	Apr 28	69,254	2.2	Apr 26	4,113,060	1.8
May 03	69,554	May 05	70,567	-1.4	May 03	4,112,047	1.8
May 10	70,932	May 12	72,758	-2.5	May 10	4,110,220	1.6
May 10	1,430,313	May 12	1,420,705	0.7	YEAR TO DATE, FIRST 19 WEEKS		

WEEKLY ELECTRIC OUTPUT INDEX--TOTAL U.S.*

SEASONALLY ADJUSTED 1982 = 100

Week Ended	2008	Week Ended	2007	Week Ended	2006
Apr 19	181	Apr 21	180	Apr 22	180
Apr 26	185	Apr 28	182	Apr 29	179
May 03	180	May 05	183	May 06	177
May 10	179	May 12	183	May 13	175

* Excludes Alaska and Hawaii.

+ Includes investor-owned companies, cooperatives and government-owned utilities.

Copyright © 2008 Edison Electric Institute. All rights reserved.

WEEKLY ELECTRIC OUTPUT BY GEOGRAPHIC DIVISION (48 CONTIGUOUS STATES)

	Week Ended			NMA CUMULATIVE JANUARY WEEK ONE TO			52 Weeks Ended		
	10-May 2008 GWh Output	12-May 2007 GWh Output	% Increase Over Corresponding Week of 2007	10-May 2008 GWh Output	12-May 2007 GWh Output	% Increase Over Corresponding Week of 2007	10-May 2008 GWh Output	12-May 2007 GWh Output	% Increase Over Corresponding Week of 2007
New England	2,237	2,334	-4.2%	47,282	48,349	-2.2%	133,379	133,293	0.1%
Mid-Atlantic	7,674	7,831	-2.0%	158,426	161,083	-1.6%	456,012	451,310	1.0%
Central Industrial	11,703	12,412	-5.7%	259,194	257,903	0.5%	723,431	707,593	2.2%
West Central	5,836	6,118	-4.6%	124,489	122,548	1.6%	354,157	347,359	2.0%
Southeast	19,544	19,519	0.1%	384,322	381,978	0.6%	1,109,003	1,085,990	2.1%
South Central	11,201	11,377	-1.5%	200,038	198,392	0.8%	599,780	605,182	-0.9%
Rocky Mountain	4,633	4,865	-4.8%	89,655	87,459	2.5%	279,625	264,219	5.8%
Pacific Northwest	2,927	2,730	7.2%	67,192	60,853	10.4%	165,418	154,323	7.2%
Pacific Southwest	5,177	5,573	-7.1%	99,716	102,140	-2.4%	289,415	294,350	-1.7%
Total United States *	70,932	72,759	-2.5%	1,430,314	1,420,705	0.7%	4,110,220	4,043,619	1.6%

Notes: EEl output data are an estimate of electricity load made available for distribution derived as weekly net generation + purchases from non-utilities + net imports - exports - sales for resale. It is not meant to be a measure of electricity generation for the U.S. EEl survey data represent the majority of national distribution (large utilities, large government power projects, some independent and large municipal power projects). The remaining segment of the industry (smaller producers) is estimated. Non-utility generation is captured via direct sales to utilities.

* Excludes Alaska and Hawaii

** Less than one-tenth of one percent

SOURCE: Edison Electric Institute (EEl), *Weekly Electric Output Report*.

AMERICAN IRON AND STEEL INSTITUTE
 1140 Connecticut Avenue, Suite 705
 Washington, D.C. 20036

May 12, 2008

ESTIMATED WEEKLY RAW STEEL* PRODUCTION

<u>Period</u>	<u>Thousand Net Tons</u>	<u>Percent Change from Previous Period</u>	<u>Percent Capability Utilization**</u>	<u>Production by District</u>		
				<u>Week Ending</u>		
				<u>May 10</u>	<u>May 3</u>	
<u>Week Ending</u>						
				North East Coast	177	174
				Pgh/Youngstown	212	216
				Lake Erie	87	91
May 10, 2008	2,136	1.8	89.5	Detroit	107	115
May 10, 2007	2,121	0.7	88.4	Indiana/Chicago	512	520
May 3, 2008	2,098	-0.9	88.0	Midwest	259	240
				Southern	687	646
<u>Year-to-Date+</u>				Western	95	96
May 10, 2008	39,590	3.4	88.7	Total	2136	2098
May 10, 2007	38,278	-	85.1			

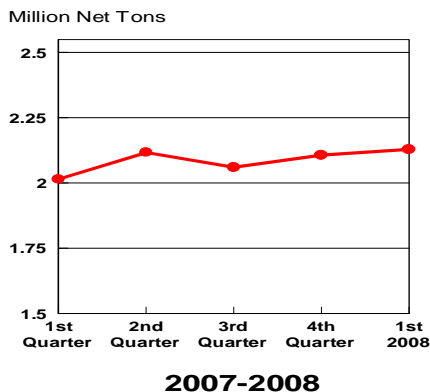
*Raw steel production tonnage included in this report is estimated based on a sampling of steel producers. Therefore, this report should be used primarily to assess production trends. The AISI production report "AIS 7," produced monthly and available by subscription, provides a more accurate summary of steel production based on data supplied by companies representing approximately 75% of U.S. production capacity.

+Includes revisions for previous months

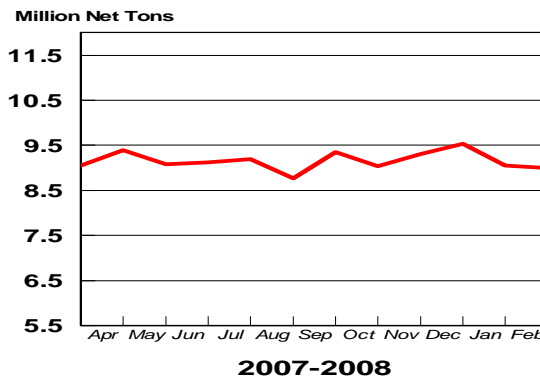
NOTE: Capability for the Fourth Quarter 2007 is approximately 31.3 million net tons vs 30.7 million net tons for the same period last year, and 30.1 million tons for the third quarter of 2007.

Capability -	2003 approx.	2.3 million tons/week
	2004	2.2
	2005	2.3
	2006	2.4
	2007	2.4

Average Weekly Raw Steel Production

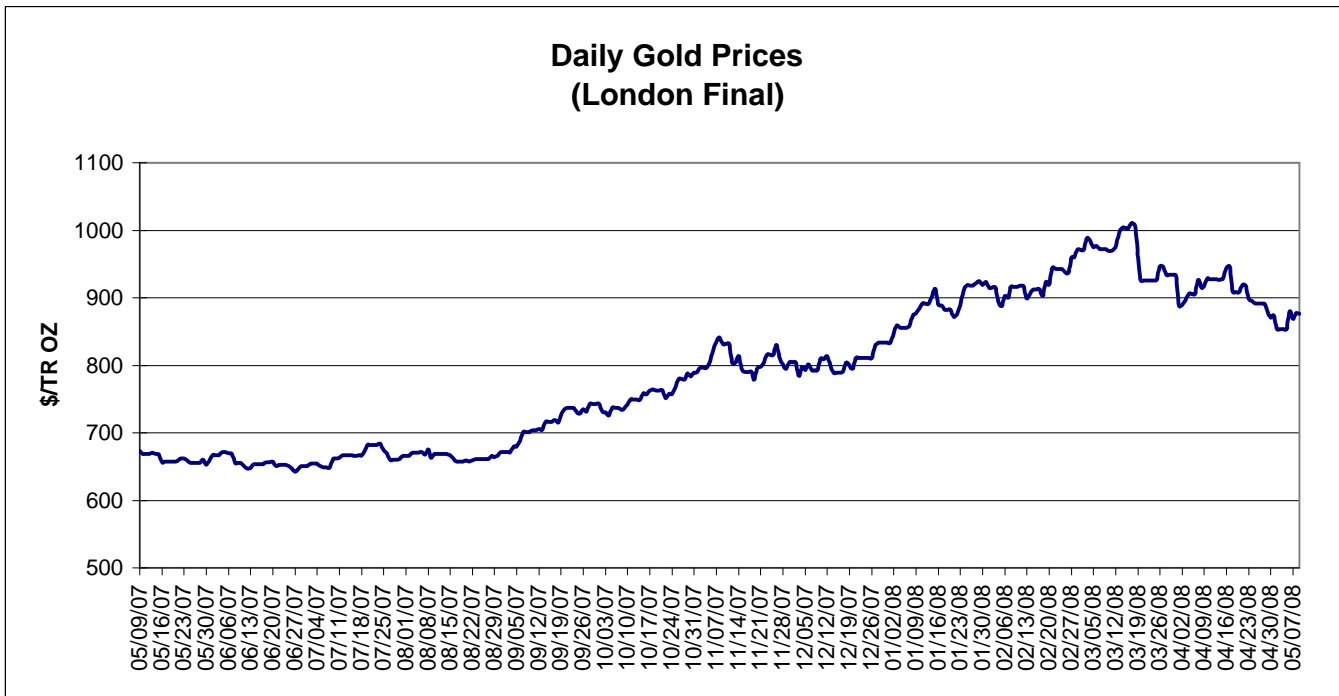
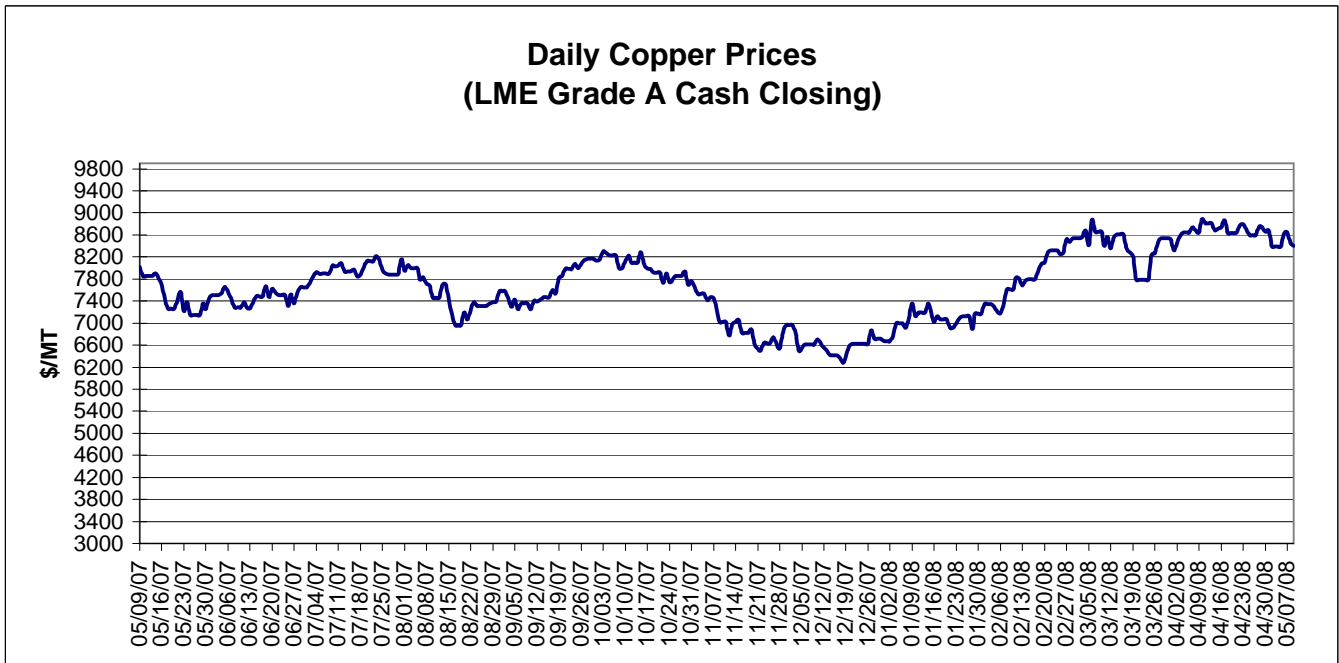


Monthly Raw Steel Production



*Steel in the first solid state after melting suitable for further processing or sale, including ingots, steel for castings and strand or pressure cast blooms, slabs, or other product forms.

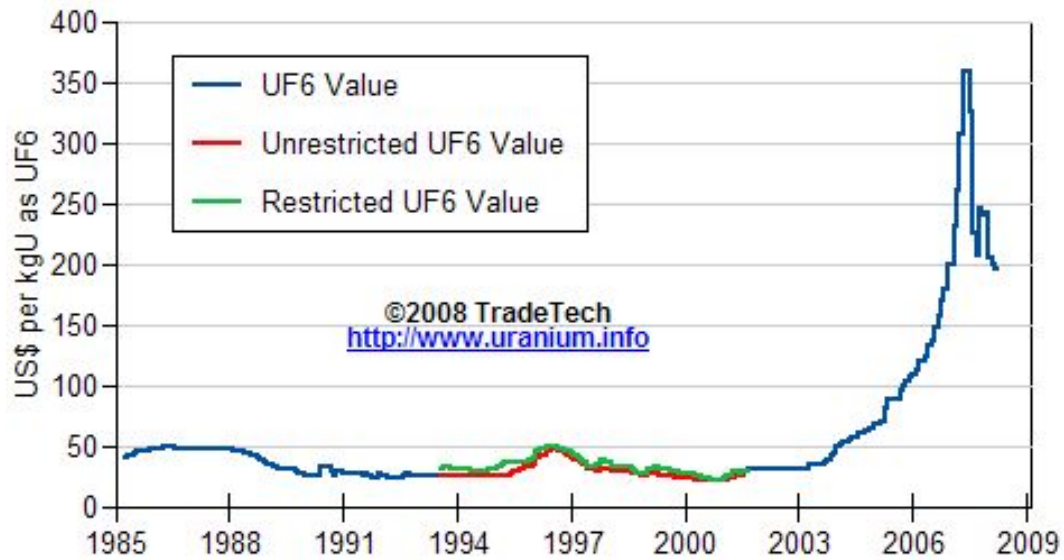
** Based on tonnage capability to produce raw steel for a sustained full order book.



Data reflect closings on weekends and holidays.

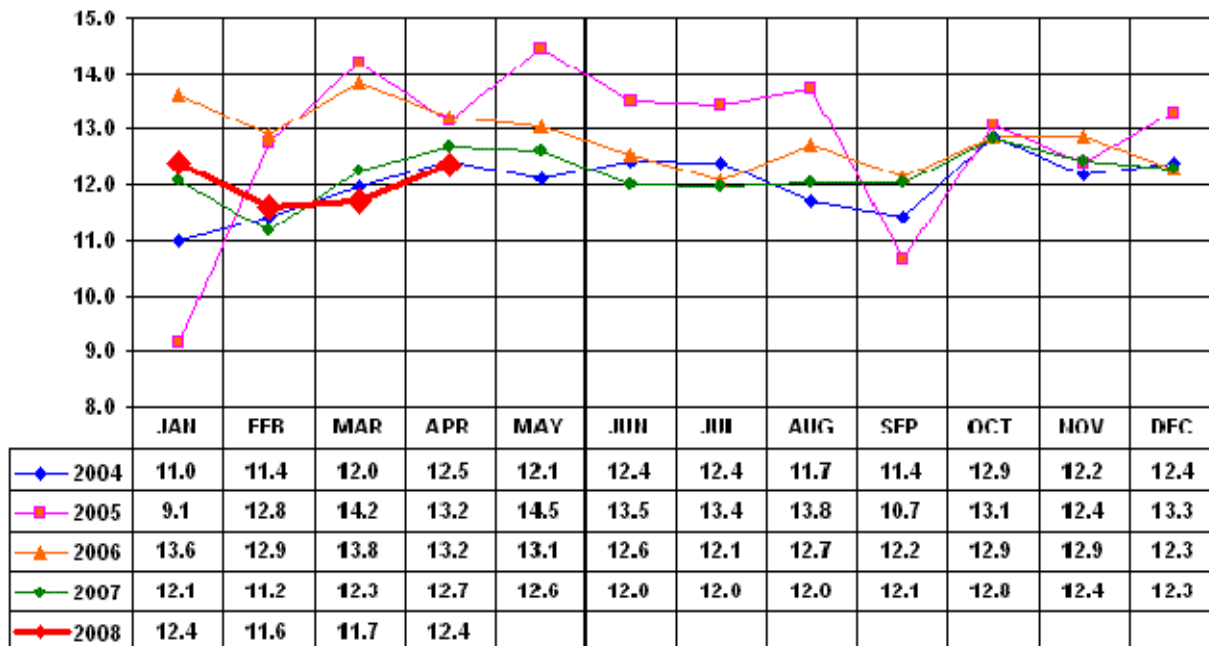
Source: Platts Metals Week

Trade Tech's Uranium (UF6) Monthly Spot Prices (US\$/kg as UF6)



Source: Trade Tech, Uranium Info Website – <http://www.uranium.info>

Coal and Coke Monthly Tonnage Indicator for Internal U.S. Waterways



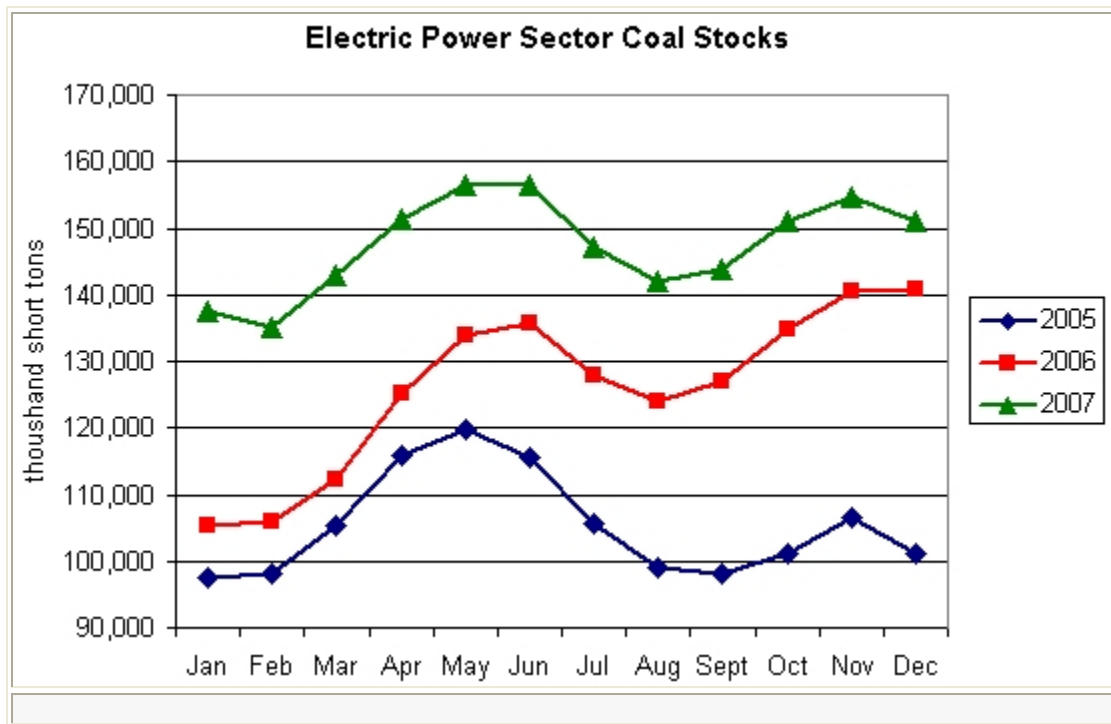
Source: U.S. Army Corps of engineers, Waterborne Commerce Statistics Center

EIA Weekly Spot Coal Prices

The following average spot coal prices appear in the graphic below, for the previous and most recent weeks:
(Dollars per Short Ton)

Week Ended	Central Appalachia 12,500 Btu, 1.2 SO2	Northern Appalachia 13,000 Btu, <3.0 SO2	Illinois Basin 11,800 Btu, 5.0 SO2	Powder River Basin 8,800 Btu, 0.8 SO2	Uinta Basin 11,700 Btu, 0.8 SO2
04-Apr-08	\$86.25	\$100.00	\$52.00	\$14.25	\$44.00
11-Apr-08	\$86.25	\$100.00	\$56.00	\$14.20	\$44.00
18-Apr-08	\$86.25	\$105.00	\$56.00	\$14.20	\$44.00
25-Apr-08	\$94.25	\$105.00	\$57.00	\$14.15	\$44.00
02-May-08	\$94.25	\$105.00	\$58.00	\$14.20	\$44.00
09-May-08	\$96.75	\$105.00	\$58.00	\$14.00	\$44.00

Source: Energy Information Administration (from Platts *Coal Outlook*, "Weekly Price Survey")



Source: Energy Information Administration