
National Mining Association

Weekly Statistical Summary

May 18, 2007 Edition
(Data for Week Ending May 12, 2007)

Prepared by
National Mining Association



Suite 500 East, 101 Constitution Avenue, NW
Washington, DC, 20001
Phone (202) 463-2600
Visit us at <http://www.nma.org>

NMA Weekly Statistical Summary

Vol. 45, No. 19
Dated 05/18/07

PRODUCTION, CONSUMPTION & TRADE						
	Week Ended			Cumulative Jan 1 to		
	05/12/07	05/13/06	% Chng	05/12/07	05/13/06	% Chng
EIA Coal Production (000 Tons):						
Week Ended/Year to Date	21,024	22,846	-8.0%	414,667	426,676	-2.8%
52 Weeks Ended	1,147,763	1,137,795	0.9%			
Month Ended -- April						
	April 07/06		% Chng	Jan - Apr 07/06		% Chng
	92,304	95,399	-3.2%	377,502	384,530	-1.8%
MONTH ENDED AND CUMULATIVE NUMBERS ARE PRELIMINARY AND SUBJECT TO CHANGE						
DOC Bituminous Coal Trade (000 Tons)						
Exports:	March 07/06		% Chng	Jan - Mar 07/06		% Chng
Metallurgical	2,769	2,396	15.6%	6,718	6,565	2.3%
Steam	1,292	1,328	-2.7%	4,296	3,929	9.3%
Imports:	3,285	3,211	2.3%	8,786	8,958	-1.9%
EI Electric Output (Mil. Kwh)						
	Week Ended			Cumulative Jan 1 to		
	05/12/07	05/13/06	% Chng	05/12/07	05/13/06	% Chng
EI Electric Output (Mil. Kwh)	72,758	69,860	4.1%	1,420,705	1,365,954	4.0%
AISI Raw Steel Output (000 Tons)	2,068	2,215	-6.6%	37,669	40,638	-7.3%
EIA U.S. PETROLEUM DATA						
4-Week Averages 000 Barrels per Day						
PETROLEUM SUPPLY:						
	Week Ending			Cumulative Daily Averages		
	05/11/07	05/11/06	% Chng	2007	2006	% Chng
Domestic Crude	5,137	5,079	1.1	5,176	5,049	2.5
Net Imports (Incl. SPR)	10,383	9,925	4.6	9,890	9,812	0.8
SPR Stocks W/D or Added	-25	-48	--	-8	-27	--
Other Stocks W/D or added	-351	-33	--	-197	-167	--
Natural Gas Liquids Prod.	2,242	2,337	-4.1	2,299	2,115	8.7



NMA
THE AMERICAN RESOURCE

National Mining Association Web Site: [http:// www.nma.org](http://www.nma.org)

EIA Estimated Weekly U.S. Coal Production Overview (Thousand Short Tons)

Coal-Producing Region and State	Week Ended			Year To Date			52 Weeks Ended		
	5/12/2007	5/5/2007	5/13/2006	5/12/2007	5/12/2006	Percent Change	5/12/2007	5/13/2006	Percent Change
Alabama	381	378	377	7,631	7,738	-1.4	18,913	20,541	-7.9
Alaska	26	26	31	485	518	-6.3	1,392	1,251	11.3
Arizona	147	145	144	3,127	2,919	7.2	8,425	10,265	-17.9
Arkansas	1	1	*	10	4	130.6	28	6	371.9
Colorado	727	721	927	13,995	12,365	13.2	37,854	36,205	4.6
Illinois	613	608	627	11,596	11,881	-2.4	31,880	31,541	1.1
Indiana	676	671	713	12,790	13,167	-2.9	35,341	34,883	1.3
Kansas	9	9	7	133	100	32.6	459	215	112.9
Kentucky Total	2,201	2,184	2,434	41,936	46,242	-9.3	115,974	121,593	-4.6
Eastern	1,652	1,639	1,908	31,819	35,873	-11.3	88,977	94,564	-5.9
Western	549	545	526	10,117	10,368	-2.4	26,996	27,029	-0.1
Louisiana	19	19	98	903	1,277	-29.3	3,730	4,009	-7.0
Maryland	99	98	114	2,055	2,100	-2.1	5,008	5,317	-5.8
Mississippi	60	60	48	1,293	1,341	-3.6	3,744	3,635	3.0
Missouri	6	6	10	79	209	-62.5	263	601	-56.2
Montana	766	760	865	14,336	14,536	-1.4	41,519	40,547	2.4
New Mexico	478	475	597	9,072	9,384	-3.3	25,589	28,161	-9.1
North Dakota	500	496	538	10,319	11,035	-6.5	29,695	30,065	-1.2
Ohio	454	451	436	8,755	8,774	-0.2	22,688	24,425	-7.1
Oklahoma	38	38	41	734	810	-9.4	1,922	1,989	-3.3
Pennsylvania Total	1,165	1,156	1,424	22,171	25,347	-12.5	62,888	67,557	-6.9
Anthracite	26	26	28	493	572	-13.8	1,435	1,662	-13.6
Bituminous	1,139	1,130	1,395	21,678	24,775	-12.5	61,453	65,896	-6.7
Tennessee	54	53	57	1,026	1,097	-6.4	2,733	3,116	-12.3
Texas	873	867	929	16,247	16,234	0.1	45,441	46,006	-1.2
Utah	442	439	511	8,273	9,918	-16.6	24,361	25,453	-4.3
Virginia	547	543	586	10,641	11,371	-6.4	29,116	28,707	1.4
Washington	-	-	64	-	1,147	-100.0	1,432	4,453	-67.8
West Virginia Total	2,812	2,790	3,163	54,049	58,389	-7.4	147,430	154,868	-4.8
Northern	871	864	924	16,899	16,944	-0.3	42,621	43,911	-2.9
Southern	1,941	1,926	2,239	37,150	41,444	-10.4	104,809	110,957	-5.5
Wyoming	7,932	8,412	8,106	163,012	158,776	2.7	449,938	412,385	9.1
Appalachian Total	7,162	7,106	8,064	138,146	150,688	-8.3	377,753	399,095	-5.3
Interior Total	2,844	2,822	2,999	53,901	55,391	-2.7	149,805	149,914	-0.1
Western Total	11,018	11,474	11,783	222,619	220,597	0.9	620,205	588,786	5.3
East of Miss. River	9,060	8,990	9,979	173,943	187,445	-7.2	475,715	496,183	-4.1
West of Miss. River	11,963	12,412	12,867	240,724	239,232	0.6	672,048	641,611	4.7
Bituminous and Lignite	20,998	21,376	22,818	414,174	426,105	-2.8	1,146,328	1,136,133	0.9
Anthracite	26	26	28	493	572	-13.8	1,435	1,662	-13.6
U.S. Total	21,024	21,401	22,846	414,667	426,676	-2.8	1,147,763	1,137,795	0.9
Railroad Cars Loaded	135,383	138,582	144,892	2,663,560	2,700,617	-1.4	7,418,300	7,193,395	3.1

Source: Energy Information Administration



WEEKLY ELECTRIC OUTPUT

Essential Energy Information from EEI's Statistics Department

Volume 75 No. 19

OUTPUT FOR WEEK ENDED - May 12, 2007

May 16, 2007

The net available amount of electric energy distributed by the Total Electric Utility Industry+ for the week ended Saturday, **May 12, 2007** was **72,758** gigawatthours (GWh), according to the Edison Electric Institute. This is equivalent to **183** on the weekly electric output index.

WEEKLY ELECTRIC OUTPUT BY GEOGRAPHIC DIVISION

(48 CONTIGUOUS STATES)

	Week Ended May 12		52 Weeks Ended May 12	
	GWh Output	% Increase Over Corresponding Week of 2006	GWh Output	% Increase Over Corresponding Period of 2006
New England	2,334	3.4	133,293	-1.0
Mid-Atlantic	7,831	7.0	451,310	-0.3
Central Industrial	12,412	6.8	707,593	0.4
West Central	6,118	4.4	347,359	0.5
Southeast	19,519	4.0	1,085,990	0.9
South Central	11,377	-1.2	605,182	1.5
Rocky Mountain	4,865	2.4	264,219	3.6
Pacific Northwest	2,730	4.3	154,323	2.8
Pacific Southwest	5,573	8.0	294,350	1.5
Total United States	72,758	4.1	4,043,619	1.0

WEEKLY ELECTRIC OUTPUT IN PREVIOUS WEEKS--GWh

Week Ended	2007	Week Ended	2006	% Inc. (07/06)	52 Weeks Ended	2007	% Inc. (07/06)
Apr 21	68,400	Apr 22	69,104	-1.0	Apr 21	4,038,423	1.0
Apr 28	69,254	Apr 29	68,651	0.9	Apr 28	4,039,026	1.0
May 05	70,567	May 06	68,872	2.5	May 05	4,040,721	0.9
May 12	72,758	May 13	69,860	4.1	May 12	4,043,619	1.0
May 12	1,420,705	May 13	1,365,954	4.0	YEAR TO DATE, FIRST 19 WEEKS		

WEEKLY ELECTRIC OUTPUT INDEX--TOTAL U.S.*

SEASONALLY ADJUSTED 1982 = 100

Week Ended	2007	Week Ended	2006	Week Ended	2005
Apr 21	180	Apr 22	180	Apr 23	174
Apr 28	182	Apr 29	179	Apr 30	173
May 05	183	May 06	177	May 07	165
May 12	183	May 13	175	May 14	172

* Excludes Alaska and Hawaii

+ Includes investor-owned companies, cooperatives and government-owned utilities.

Copyright © 2007 Edison Electric Institute. All rights reserved.

WEEKLY ELECTRIC OUTPUT BY GEOGRAPHIC DIVISION (48 CONTIGUOUS STATES)

	Week Ended			NMA CUMULATIVE JANUARY 1 to			52 Weeks Ended		
	12-May 2007 GWh Output	13-May 2006 GWh Output	% Increase Over Corresponding Week of 2006	12-May 2007 GWh Output	13-May 2006 GWh Output	% Increase Over Corresponding Week of 2006	12-May 2007 GWh Output	13-May 2006 GWh Output	% Increase Over Corresponding Week of 2006
New England	2,334	2,257	3.4%	48,349	46,880	3.1%	133,293	134,598	-1.0%
Mid-Atlantic	7,831	7,315	7.1%	161,083	153,522	4.9%	451,310	452,583	-0.3%
Central Industrial	12,412	11,621	6.8%	257,903	245,195	5.2%	707,593	705,025	0.4%
West Central	6,118	5,859	4.4%	122,548	119,337	2.7%	347,359	345,567	0.5%
Southeast	19,519	18,769	4.0%	381,978	368,079	3.8%	1,085,990	1,075,990	0.9%
South Central	11,377	11,510	-1.2%	198,392	191,582	3.6%	605,182	595,954	1.5%
Rocky Mountain	4,865	4,750	2.4%	87,459	83,864	4.3%	264,219	254,936	3.6%
Pacific Northwest	2,730	2,617	4.3%	60,853	57,903	5.1%	154,323	150,131	2.8%
Pacific Southwest	<u>5,573</u>	<u>5,162</u>	8.0%	<u>102,140</u>	<u>99,594</u>	2.6%	<u>294,350</u>	<u>290,045</u>	1.5%
Total United States *	72,759	69,860	4.1%	1,420,705	1,365,956	4.0%	4,043,619	4,004,829	1.0%

Notes: EEI output data are an estimate of electricity load made available for distribution derived as weekly net generation + purchases from non-utilities + net imports - exports - sales for resale. It is not meant to be a measure of electricity generation for the U.S. EEI survey data represent the majority of national distribution (large utilities, large government power projects, some independent and large municipal power projects). The remaining segment of the industry (smaller producers) is estimated. Non-utility generation is captured via direct sales to utilities.

* Excludes Alaska and Hawaii

** Less than one-tenth of one percent

SOURCE: Edison Electric Institute (EEI), *Weekly Electric Output Report*.

AMERICAN IRON AND STEEL INSTITUTE
 1140 Connecticut Avenue, Suite 705
 Washington, D.C. 20036

May 14, 2007

ESTIMATED WEEKLY RAW STEEL* PRODUCTION

<u>Period</u>	<u>Thousand Net Tons</u>	<u>Percent Change from Previous Period</u>	<u>Percent Capability Utilization**</u>	<u>Production by District</u>	
				<u>Week Ending</u>	
				<u>May 14</u>	<u>May 5</u>
<u>Week Ending</u>					
				North East	135 126
				Pgh/Young	226 228
				Lake Erie	101 100
				Detroit	87 95
				Indiana/Ct	549 532
				Midwest	238 245
				Southern	651 641
				Western	81 95
				Total	2068 2062
<u>Year-to-Date+</u>					
May 12, 2007	2,068	0.2	86.4		
May 12, 2006	2,215	-6.6	92.5		
May 5, 2007	2,062	1.4	86.2		
May 12, 2007	37,669	-7.3	84.2		
May 12, 2006	40,638	-	90.2		

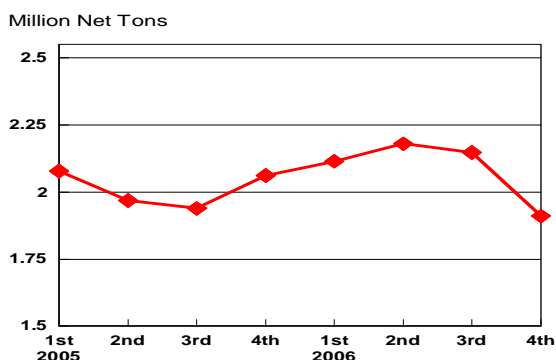
*Raw steel production tonnage included in this report is estimated based on a sampling of steel producers. Therefore, this report should be used primarily to assess production trends. The AISI production report "AIS 7," produced monthly and available by subscription, provides a more accurate summary of steel production based on data supplied by companies representing approximately 75% of U.S. production capacity.

+Includes revisions for previous months

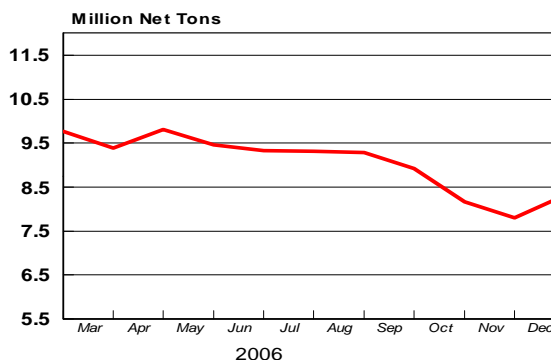
NOTE: Capability for the First Quarter 2007 is approximately 31.2 million net tons vs 30.5 million net tons for the same period last year, and 30.7 million tons for the fourth quarter of 2006.

Capability -	2003 approx.	2004	2005	2006	2007
	2.3 million tons/week	2.2	2.3	2.4	2.4

Average Weekly Raw Steel Production

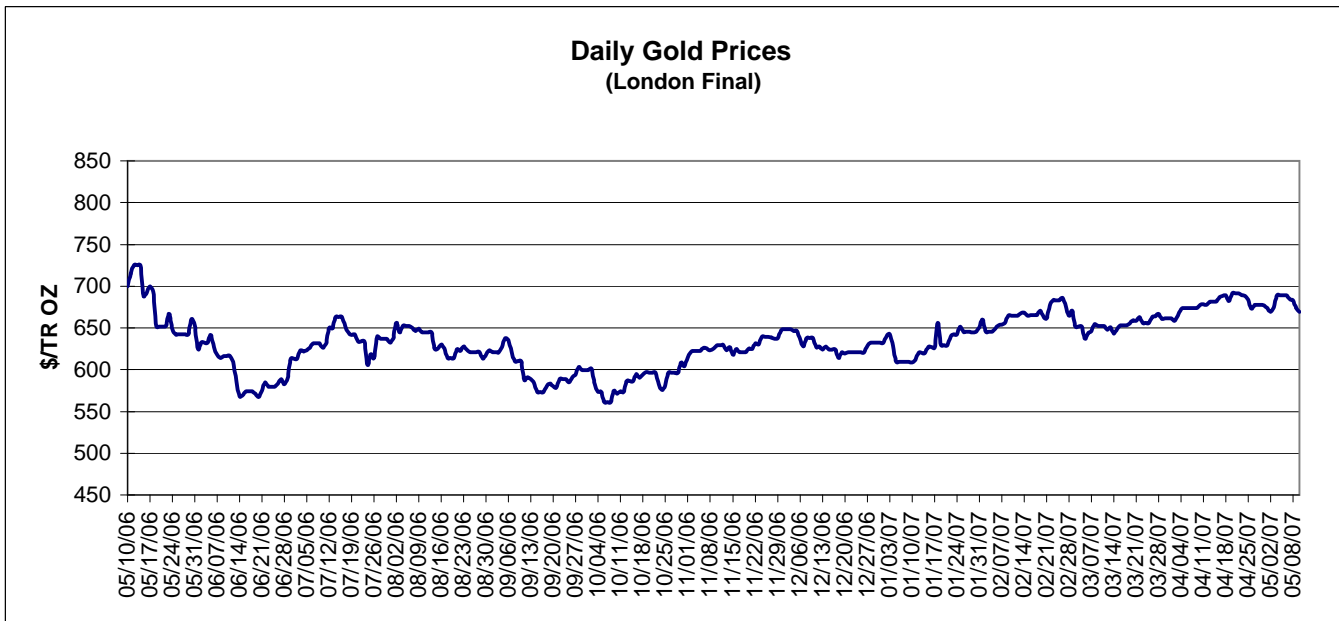
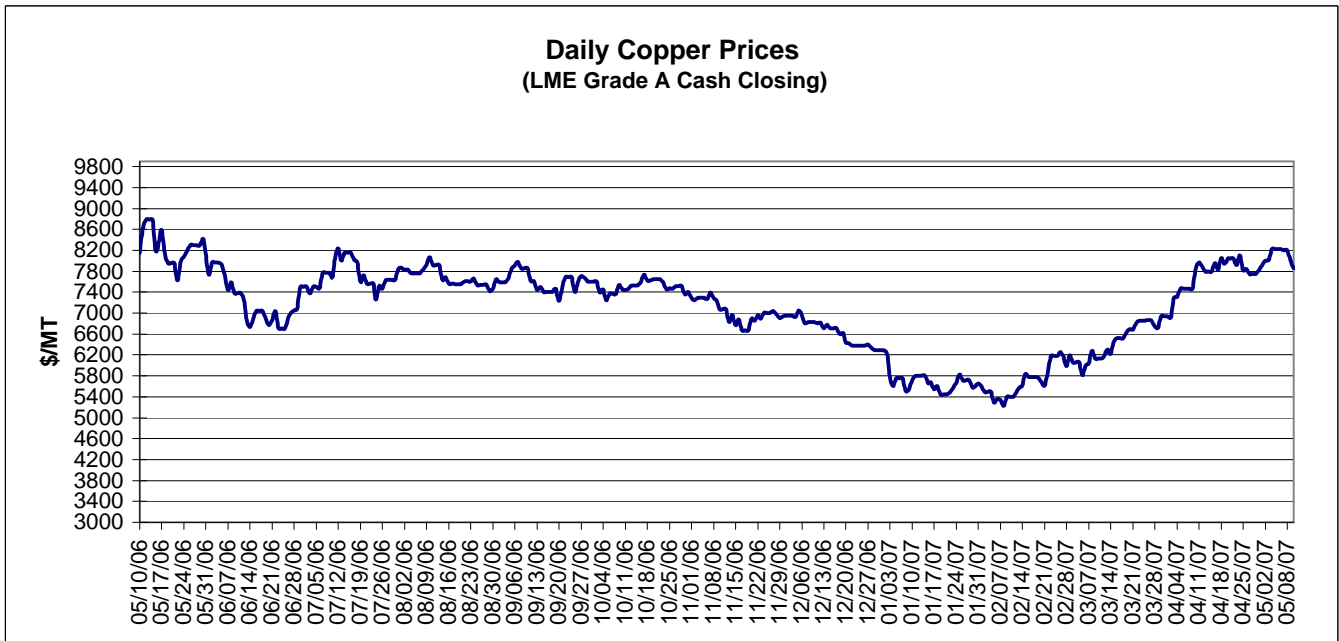


MONTHLY RAW STEEL PRODUCTION



*Steel in the first solid state after melting suitable for further processing or sale, including ingots, steel for castings and strand or pressure cast blooms, slabs, or other product forms.

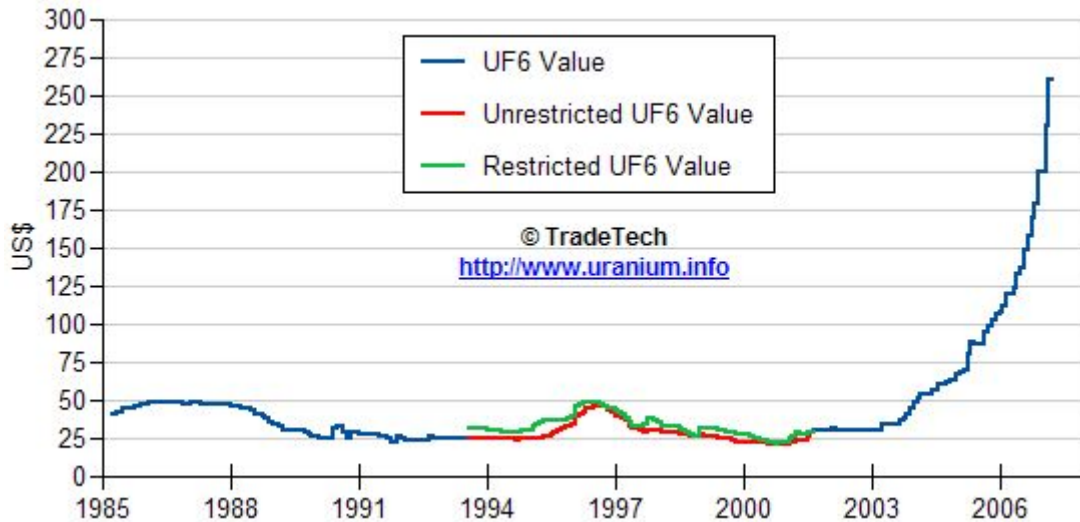
** Based on tonnage capability to produce raw steel for a sustained full order book.



Data reflect closings on weekends and holidays.

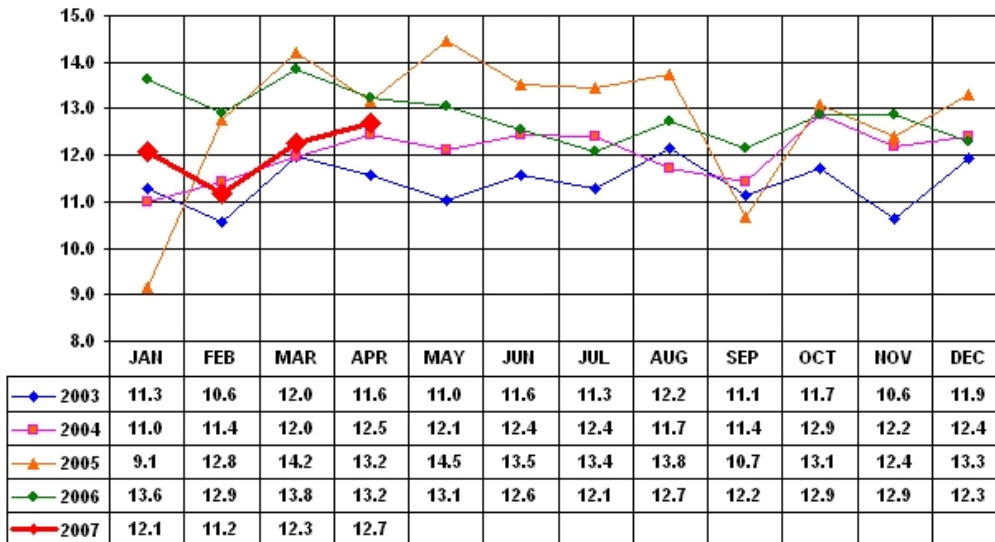
Source: Platts Metals Week

Trade Tech's Uranium (UF6) Monthly Spot Prices (US\$/kg as UF6)



Source: Trade Tech, Uranium Info Website – <http://www.uranium.info>

Coal and Coke Monthly Tonnage Indicator for Internal U.S. Waterways



Source: U.S. Army Corps of engineers, Waterborne Commerce Statistics Center