
National Mining Association

Weekly Statistical Summary

May 2, 2008 Edition
(Data for Week Ending April 26, 2008)

Prepared by
National Mining Association



Suite 500 East, 101 Constitution Avenue, NW
Washington, DC, 20001
Phone (202) 463-2600
Visit us at <http://www.nma.org>

NMA Weekly Statistical Summary

Vol. 46, No. 17
Dated 05/02/08

PRODUCTION, CONSUMPTION & TRADE						
	Week Ended			* Cumulative Jan 1 to		
	04/26/08	04/28/07	% Chng	04/26/08	04/26/07	% Chng
EIA Coal Production (000 Tons):						
Week Ended/Year to Date	22,661	21,731	4.3%	380,110	368,316	3.2%
52 Weeks Ended	1,152,024	1,153,515	-0.1%			
* Due to leap year, 2008 cumulative reflects one extra day of tonnage.						
	March 08/07		% Chng	Jan - Mar 08/07		% Chng
Month Ended -- March	99,020	97,628	1.4%	295,300	285,901	3.3%
MONTH ENDED AND CUMULATIVE NUMBERS ARE PRELIMINARY AND SUBJECT TO CHANGE						
DOC Bituminous Coal Trade (000 Tons)						
	February 08/07		% Chng	Jan - Feb 08/07		% Chng
Exports:						
Metallurgical	2,682	1,874	43.1%	5,356	3,950	35.6%
Steam	1,477	775	90.6%	3,699	3,005	23.1%
Imports:	2,619	2,656	-1.4%	5,000	5,501	-9.1%
	Week Ended			* Cumulative Jan 1 to		
	04/26/08	04/28/07	% Chng	04/26/08	04/28/07	% Chng
EEl Electric Output (Mil. Kwh)	70,763	69,254	2.2%	1,289,827	1,277,380	1.0%
AISI Raw Steel Output (000 Tons)	2,118	2,113	0.2%	35,356	34,040	3.9%
EIA U.S. PETROLEUM DATA						
4-Week Averages						
000 Barrels per Day						
	Week Ending			Cumulative Daily Averages		
	04/25/08	04/25/07	% Chng	2008	2007	% Chng
PETROLEUM SUPPLY:						
Domestic Crude	5,098	5,212	-2.2	5,083	5,184	-1.9
Net Imports (Incl. SPR)	9,486	10,181	-6.8	9,763	9,925	-1.6
SPR Stocks W/D or Added	-57	-22	--	-39	-6	--
Other Stocks W/D or added	-27	-223	--	-265	-211	--
Natural Gas Liquids Prod.	2,423	2,401	0.9	2,411	2,323	3.8



NMA

THE AMERICAN RESOURCE National Mining Association Web Site: [http:// www.nma.org](http://www.nma.org)

EIA Estimated Weekly U.S. Coal Production Overview (Thousand Short Tons)

Coal-Producing Region and State	Week Ended			Year to Date		Percent Change	52 Weeks Ended		Percent Change
	4/26/2008	4/19/2008	4/28/2007	4/26/2008	4/26/2007		4/26/2008	4/28/2007	
Alabama	393	389	346	6,547	6,525	0.3	19,467	18,624	4.5
Alaska	28	27	26	423	553	-23.5	1,188	1,527	-22.2
Arizona	117	116	152	2,036	2,624	-22.4	7,364	8,235	-10.6
Arkansas	2	2	1	33	22	46.4	93	42	123.5
Colorado	740	731	760	11,976	10,852	10.4	37,308	36,748	1.5
Illinois	668	660	662	11,327	12,177	-7.0	31,537	34,391	-8.3
Indiana	714	706	653	11,991	11,233	6.7	35,617	34,945	1.9
Kansas	11	11	9	168	140	19.6	446	481	-7.3
Kentucky Total	2,393	2,365	2,184	38,848	38,295	1.4	115,306	118,189	-2.4
Eastern	1,740	1,719	1,681	28,349	28,842	-1.7	86,130	90,700	-5.0
Western	653	645	503	10,499	9,453	11.1	29,177	27,489	6.1
Louisiana	19	65	14	1,375	755	82.0	3,678	3,782	-2.7
Maryland	52	51	41	729	756	-3.5	2,259	3,943	-42.7
Mississippi	59	105	94	1,053	1,169	-9.9	3,404	3,723	-8.5
Missouri	5	5	4	76	76	1.0	236	280	-15.8
Montana	901	890	749	14,286	12,877	10.9	44,595	41,977	6.2
New Mexico	487	481	561	7,829	7,654	2.3	24,507	25,472	-3.8
North Dakota	556	550	510	9,640	9,718	-0.8	29,426	30,261	-2.8
Ohio	490	484	386	7,922	7,099	11.6	23,295	21,981	6.0
Oklahoma	38	37	32	628	539	16.6	1,731	1,814	-4.6
Pennsylvania Total	1,336	1,320	1,252	21,914	22,347	-1.9	64,497	66,220	-2.6
Anthracite	41	40	29	605	517	17.1	1,639	1,538	6.6
Bituminous	1,295	1,280	1,223	21,309	21,830	-2.4	62,857	64,681	-2.8
Tennessee	52	52	47	821	893	-8.1	2,563	2,722	-5.9
Texas	869	859	769	13,870	12,778	8.5	42,827	44,025	-2.7
Utah	491	485	478	7,679	7,936	-3.2	23,947	25,139	-4.7
Virginia	479	474	534	8,368	9,328	-10.3	24,306	29,087	-16.4
Washington	--	--	--	--	--	--	0	1,558	-100.0
West Virginia Total	3,150	3,113	2,908	51,393	51,170	0.4	152,849	151,946	0.6
Northern	958	947	797	16,041	14,823	8.2	43,008	42,254	1.8
Southern	2,192	2,166	2,111	35,351	36,347	-2.7	109,841	109,692	0.1
Wyoming	8,613	8,849	8,559	149,177	140,799	5.9	459,575	446,403	3.0
Appalachian Total	7,692	7,601	7,195	126,043	126,960	-0.7	375,366	385,223	-2.6
Interior Total	3,037	3,095	2,741	51,021	48,343	5.5	148,746	150,971	-1.5
Western Total	11,932	12,129	11,796	203,046	193,013	5.2	627,911	617,321	1.7
East of Miss. River	9,786	9,718	9,107	160,914	160,994	*	475,101	485,771	-2.2
West of Miss. River	12,875	13,107	12,625	219,196	207,323	5.7	676,923	667,744	1.4
Bituminous and Lignite	22,620	22,785	21,702	379,505	367,800	3.2	1,150,385	1,151,977	-0.1
Anthracite	41	40	29	605	517	17.1	1,639	1,538	6.6
U.S. Total	22,661	22,825	21,731	380,110	368,316	3.2	1,152,024	1,153,515	-0.1
Railroad Cars Loaded	149,941	149,638	139,911	2,490,328	2,389,595	4.2	7,504,765	7,436,474	0.9

Source: Energy Information Administration



Volume 76 No. 17

OUTPUT FOR WEEK ENDED - Apr 26, 2008

Apr 30, 2008

The net available amount of electric energy distributed by the Total Electric Utility Industry+ for the week ended Saturday, Apr 26, 2008 was 70,763 gigawatthours (GWh), according to the Edison Electric Institute. This is equivalent to 185 on the weekly electric output index.

WEEKLY ELECTRIC OUTPUT BY GEOGRAPHIC DIVISION
(48 CONTIGUOUS STATES)

	Week Ended April 26		52 Weeks Ended April 26	
	GWh Output	% Increase Over Corresponding Week of 2007	GWh Output	% Increase Over Corresponding Period of 2007
New England	2,206	-2.9	133,461	0.1
Mid-Atlantic	7,581	-1.0	456,090	1.2
Central Industrial	12,008	0.2	724,155	2.5
West Central	6,017	-0.1	354,501	2.2
Southeast	19,162	1.0	1,110,029	2.4
South Central	10,833	9.7	600,287	-0.9
Rocky Mountain	4,454	4.8	279,904	6.0
Pacific Northwest	3,169	12.9	164,974	7.1
Pacific Southwest	5,333	-1.4	289,660	-1.4
Total United States	70,763	2.2	4,113,060	1.8

WEEKLY ELECTRIC OUTPUT IN PREVIOUS WEEKS--GWh

Week Ended	2008	Week Ended	2007	% Inc. (08/07)	52 Weeks Ended	2008	% Inc. (08/07)
Apr 05	71,906	Apr 07	70,382	2.2	Apr 05	4,110,787	1.8
Apr 12	70,761	Apr 14	70,367	0.6	Apr 12	4,111,181	1.8
Apr 19	68,770	Apr 21	68,400	0.5	Apr 19	4,111,551	1.8
Apr 26	70,763	Apr 28	69,254	2.2	Apr 26	4,113,060	1.8
Apr 26	1,289,827	Apr 28	1,277,380	1.0	YEAR TO DATE, FIRST 17 WEEKS		

WEEKLY ELECTRIC OUTPUT INDEX--TOTAL U.S.*
SEASONALLY ADJUSTED 1982 = 100

Week Ended	2008	Week Ended	2007	Week Ended	2006
Apr 05	189	Apr 07	183	Apr 08	178
Apr 12	188	Apr 14	186	Apr 15	177
Apr 19	181	Apr 21	180	Apr 22	180
Apr 26	185	Apr 28	182	Apr 29	179

* Excludes Alaska and Hawaii.

+ Includes investor-owned companies, cooperatives and government-owned utilities.

Copyright © 2008 Edison Electric Institute. All rights reserved.

WEEKLY ELECTRIC OUTPUT BY GEOGRAPHIC DIVISION (48 CONTIGUOUS STATES)

	Week Ended			NMA CUMULATIVE JANUARY WEEK ONE TO			52 Weeks Ended		
	26-Apr 2008 GWh Output	28-Apr 2007 GWh Output	% Increase Over Corresponding Week of 2007	26-Apr 2008 GWh Output	28-Apr 2007 GWh Output	% Increase Over Corresponding Week of 2007	26-Apr 2008 GWh Output	28-Apr 2007 GWh Output	% Increase Over Corresponding Week of 2007
New England	2,206	2,273	-2.9%	42,782	43,767	-2.3%	133,461	133,275	0.1%
Mid-Atlantic	7,581	7,657	-1.0%	143,140	145,719	-1.8%	456,090	450,814	1.2%
Central Industrial	12,008	11,984	0.2%	235,448	233,433	0.9%	724,155	706,379	2.5%
West Central	6,017	6,025	-0.1%	112,734	110,450	2.1%	354,501	346,995	2.2%
Southeast	19,162	18,969	1.0%	346,274	342,904	1.0%	1,110,029	1,083,866	2.4%
South Central	10,833	9,879	9.7%	178,538	176,384	1.2%	600,287	605,929	-0.9%
Rocky Mountain	4,454	4,251	4.8%	80,491	78,017	3.2%	279,904	263,995	6.0%
Pacific Northwest	3,169	2,806	12.9%	61,298	55,403	10.6%	164,974	154,093	7.1%
Pacific Southwest	5,333	5,410	-1.4%	89,123	91,302	-2.4%	289,660	293,680	-1.4%
Total United States *	70,763	69,254	2.2%	1,289,828	1,277,379	1.0%	4,113,061	4,039,026	1.8%

Notes: EEl output data are an estimate of electricity load made available for distribution derived as weekly net generation + purchases from non-utilities + net imports - exports - sales for resale. It is not meant to be a measure of electricity generation for the U.S. EEl survey data represent the majority of national distribution (large utilities, large government power projects, some independent and large municipal power projects). The remaining segment of the industry (smaller producers) is estimated. Non-utility generation is captured via direct sales to utilities.

* Excludes Alaska and Hawaii

** Less than one-tenth of one percent

SOURCE: Edison Electric Institute (EEl), *Weekly Electric Output Report*.

AMERICAN IRON AND STEEL INSTITUTE
 1140 Connecticut Avenue, Suite 705
 Washington, D.C. 20036

April 28, 2008

ESTIMATED WEEKLY RAW STEEL* PRODUCTION

<u>Period</u>	<u>Thousand Net Tons</u>	<u>Percent Change from Previous Period</u>	<u>Percent Capability Utilization**</u>	<u>Production by District</u>		
				<u>Week Ending April 26</u>	<u>Week Ending April 19</u>	
<u>Week Ending</u>				North East Coast	176	180
				Pgh/Youngstown	214	215
April 26, 2008	2,118	-1.6	88.8	Lake Erie	95	90
April 26, 2007	2,113	0.2	88.3	Detroit	117	106
April 19, 2008	2,154	0.9	90.3	Indiana/Chicago	523	514
				Midwest	252	258
				Southern	644	694
				Western	97	95
				Total	2118	2152
<u>Year-to-Date+</u>						
April 26, 2008	35,356	3.8	88.7			
April 26, 2007	34,040	-	84.3			

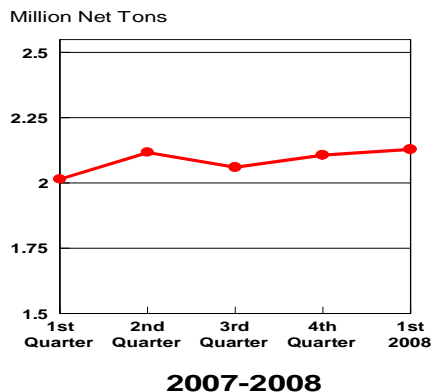
*Raw steel production tonnage included in this report is estimated based on a sampling of steel producers. Therefore, this report should be used primarily to assess production trends. The AISI production report "AIS 7," produced monthly and available by subscription, provides a more accurate summary of steel production based on data supplied by companies representing approximately 75% of U.S. production capacity.

+Includes revisions for previous months

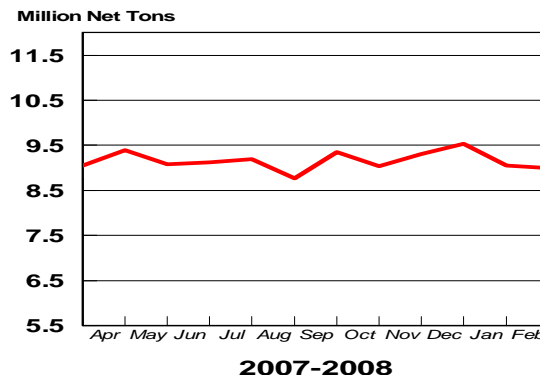
NOTE: Capability for the Fourth Quarter 2007 is approximately 31.3 million net tons vs 30.7 million net tons for the same period last year, and 30.1 million tons for the third quarter of 2007.

Capability -	2003 approx.	2.3 million tons/week
	2004	2.2
	2005	2.3
	2006	2.4
	2007	2.4

Average Weekly Raw Steel Production

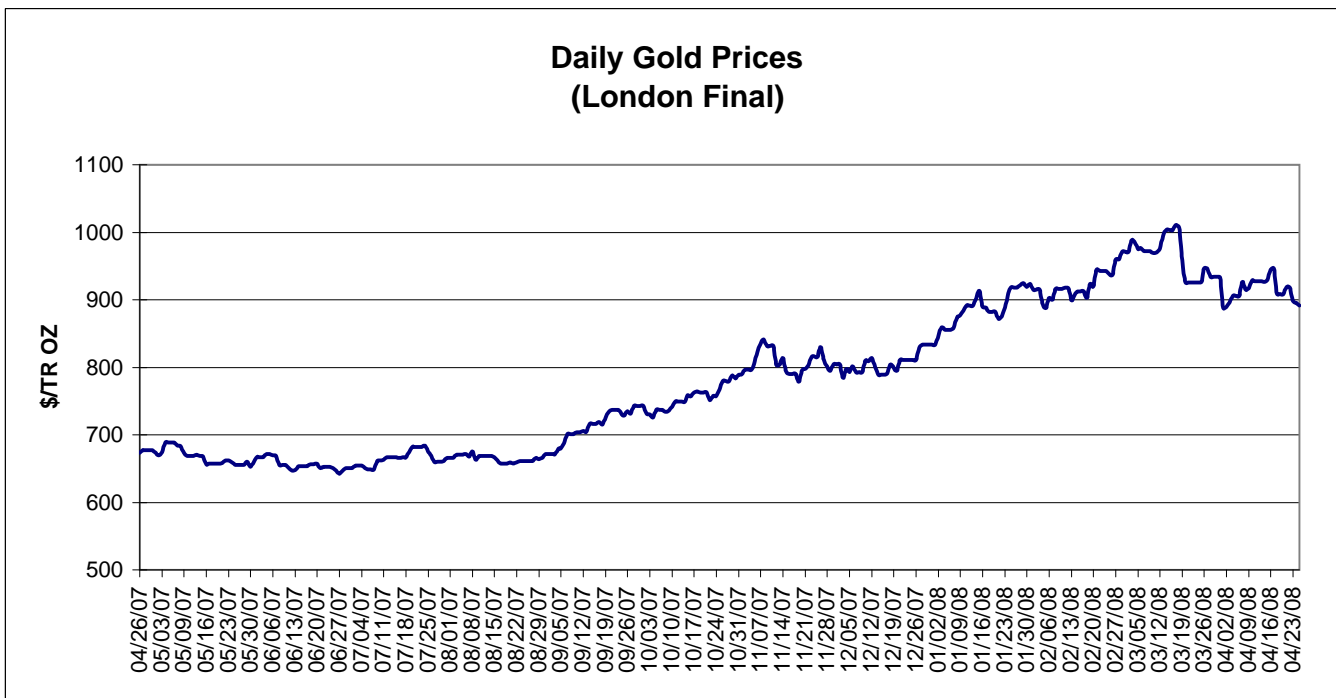
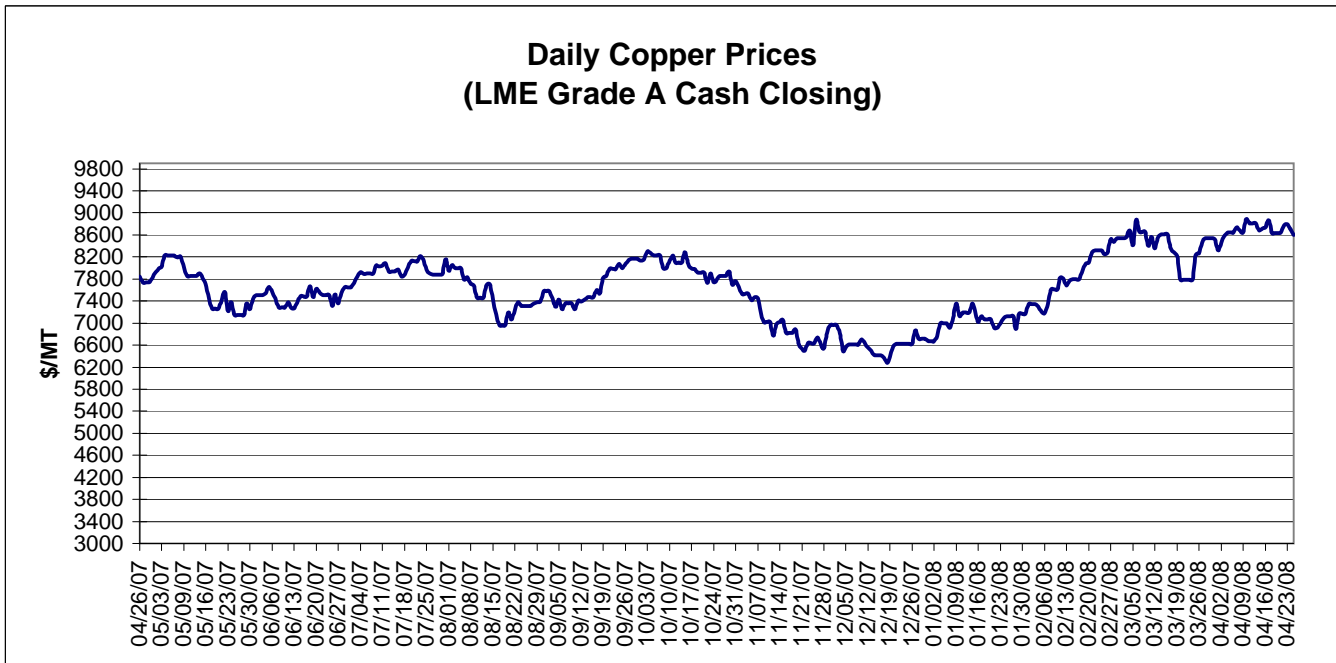


Monthly Raw Steel Production



*Steel in the first solid state after melting suitable for further processing or sale, including ingots, steel for castings and strand or pressure cast blooms, slabs, or other product forms.

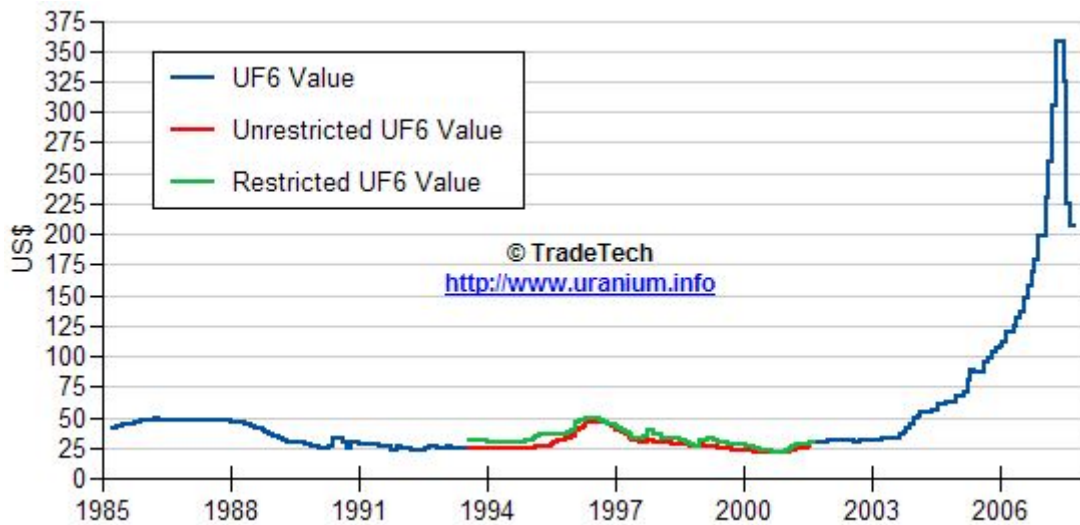
** Based on tonnage capability to produce raw steel for a sustained full order book.



Data reflect closings on weekends and holidays.

Source: Platts Metals Week

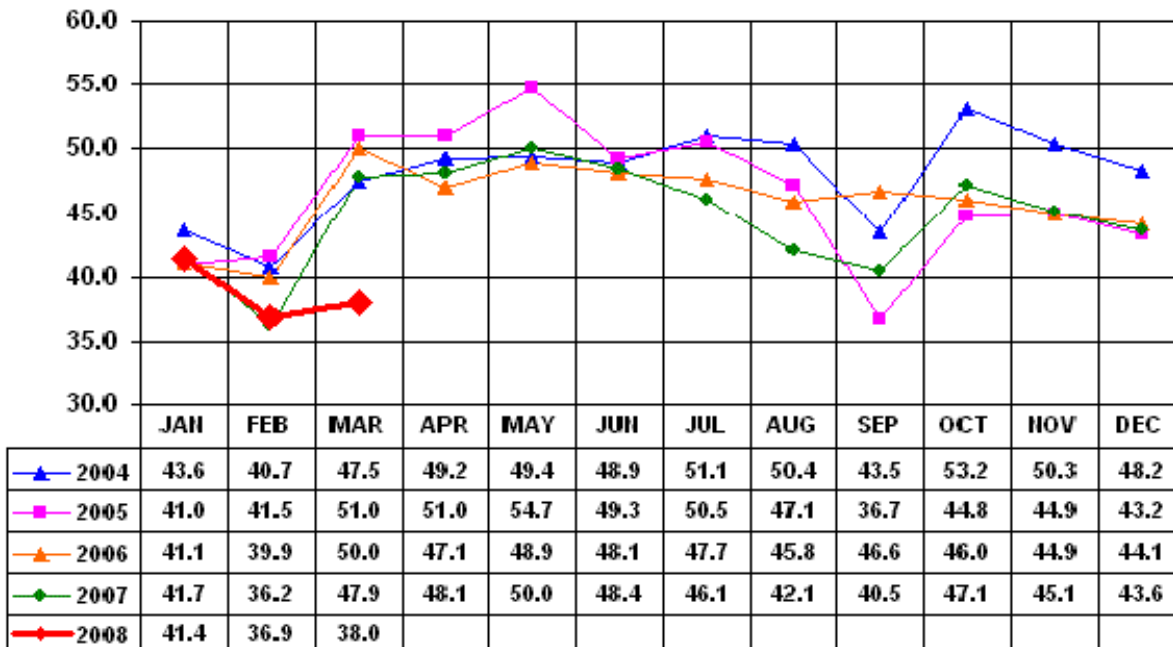
Trade Tech's Uranium (UF6) Monthly Spot Prices (US\$/kg as UF6)



Source: Trade Tech, Uranium Info Website – <http://www.uranium.info>

All Commodities

Monthly Tonnage Indicator for Internal U.S. Waterways



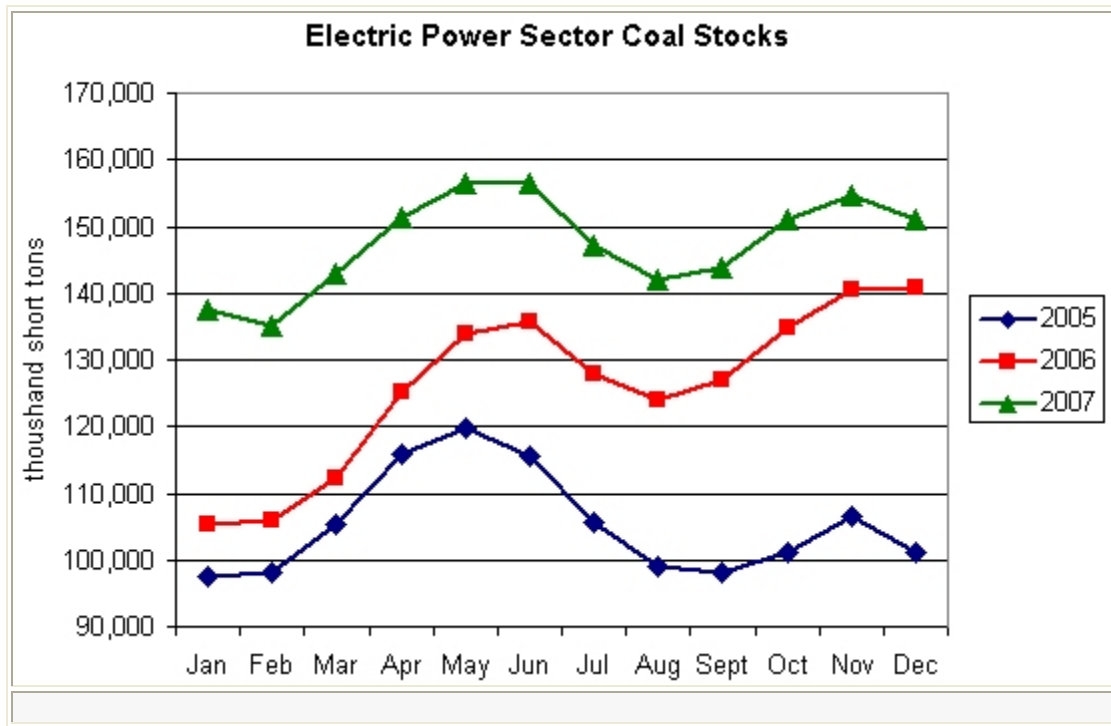
Source: U.S. Army Corps of engineers, Waterborne Commerce Statistics Center

EIA Weekly Spot Coal Prices

The following average spot coal prices appear in the graphic below, for the previous and most recent weeks:
(Dollars per Short Ton)

Week Ended	Central Appalachia 12,500 Btu, 1.2 SO2	Northern Appalachia 13,000 Btu, <3.0 SO2	Illinois Basin 11,800 Btu, 5.0 SO2	Powder River Basin 8,800 Btu, 0.8 SO2	Uinta Basin 11,700 Btu, 0.8 SO2
20-Mar-08	\$84.35	\$80.00	\$52.00	\$14.20	\$40.00
28-Mar-08	\$85.80	\$110.00	\$52.00	\$14.55	\$40.00
04-Apr-08	\$86.25	\$100.00	\$52.00	\$14.25	\$44.00
11-Apr-08	\$86.25	\$100.00	\$56.00	\$14.20	\$44.00
18-Apr-08	\$86.25	\$105.00	\$56.00	\$14.20	\$44.00
25-Apr-08	\$94.25	\$105.00	\$57.00	\$14.15	\$44.00

Source: Energy Information Administration (from Platts *Coal Outlook*, "Weekly Price Survey")



Source: Energy Information Administration