
National Mining Association

Weekly Statistical Summary

May 23, 2008 Edition
(Data for Week Ending May 17, 2008)

Prepared by
National Mining Association



Suite 500 East, 101 Constitution Avenue, NW
Washington, DC, 20001
Phone (202) 463-2600
Visit us at <http://www.nma.org>

NMA Weekly Statistical Summary

Vol. 46, No. 20
Dated 05/23/08

PRODUCTION, CONSUMPTION & TRADE						
	Week Ended			* Cumulative Jan 1 to		
	05/17/08	05/19/07	% Chng	05/17/08	05/17/07	% Chng
EIA Coal Production (000 Tons):						
Week Ended/Year to Date	22,244	22,024	1.0%	447,708	433,026	3.4%
52 Weeks Ended	1,154,822	1,150,475	0.4%			
* Due to leap year, 2008 cumulative reflects one extra day of tonnage.						
	April 08/07		% Chng	Jan - Apr 08/07		% Chng
Month Ended -- April	98,009	93,048	5.3%	393,309	378,948	3.8%
MONTH ENDED AND CUMULATIVE NUMBERS ARE PRELIMINARY AND SUBJECT TO CHANGE						
DOC Bituminous Coal Trade (000 Tons)						
	March 08/07		% Chng	Jan - Mar 08/07		% Chng
Exports:						
Metallurgical	3,745	2,769	35.2%	9,101	6,718	35.5%
Steam	2,901	1,292	124.5%	6,600	4,296	53.6%
Imports:	2,640	3,285	-19.6%	7,640	8,786	-13.0%
	Week Ended			* Cumulative Jan 1 to		
	05/17/08	05/19/07	% Chng	05/17/08	05/19/07	% Chng
EEl Electric Output (Mil. Kwh)	69,639	71,696	-2.9%	1,499,952	1,492,402	0.5%
AISI Raw Steel Output (000 Tons)	2,146	2,121	1.2%	41,736	40,399	3.3%
EIA U.S. PETROLEUM DATA						
4-Week Averages						
000 Barrels per Day						
	Week Ending			Cumulative Daily Averages		
	05/16/08	05/16/07	% Chng	2008	2007	% Chng
PETROLEUM SUPPLY:						
Domestic Crude	5,093	5,230	-2.6	5,099	5,191	-1.8
Net Imports (Incl. SPR)	9,977	10,212	-2.3	9,738	9,972	-2.3
SPR Stocks W/D or Added	-54	-27	--	-43	-9	--
Other Stocks W/D or added	-156	-276	--	-219	-226	--
Natural Gas Liquids Prod.	2,497	2,432	2.7	2,333	2,341	-0.3



NMA

THE AMERICAN RESOURCE National Mining Association Web Site: [http:// www.nma.org](http://www.nma.org)

EIA Estimated Weekly U.S. Coal Production Overview (Thousand Short Tons)

Coal-Producing Region and State	Week Ended			Year to Date			52 Weeks Ended		
	5/17/2008	5/10/2008	5/19/2007	5/17/2008	5/17/2007	Percent Change	5/17/2008	5/19/2007	Percent Change
Alabama	390	407	342	7,744	7,563	2.4	19,627	18,558	5.8
Alaska	27	29	25	507	630	-19.5	1,195	1,513	-21.0
Arizona	116	122	150	2,394	3,080	-22.3	7,266	8,276	-12.2
Arkansas	2	2	1	38	27	41.9	94	46	105.4
Colorado	733	765	751	14,228	13,132	8.4	37,283	36,309	2.7
Illinois	663	691	654	13,362	14,162	-5.6	31,588	34,537	-8.5
Indiana	708	739	645	14,166	13,190	7.4	35,837	34,853	2.8
Kansas	11	11	9	200	166	20.7	453	487	-7.0
Kentucky Total	2,373	2,475	2,157	46,135	44,841	2.9	116,053	117,560	-1.3
Eastern	1,725	1,799	1,661	33,647	33,880	-0.7	86,393	90,107	-4.1
Western	648	675	497	12,488	10,961	13.9	29,660	27,454	8.0
Louisiana	70	60	14	1,523	796	91.3	3,785	3,521	7.5
Maryland	51	54	40	887	879	0.9	2,295	3,731	-38.5
Mississippi	93	63	47	1,291	1,345	-4.0	3,480	3,735	-6.9
Missouri	5	5	4	92	89	4.0	239	265	-10.0
Montana	893	932	740	17,029	15,122	12.6	45,096	41,686	8.2
New Mexico	482	503	554	9,310	9,335	-0.3	24,309	25,404	-4.3
North Dakota	551	575	504	11,333	11,246	0.8	29,592	30,214	-2.1
Ohio	486	506	381	9,413	8,256	14.0	23,630	21,860	8.1
Oklahoma	38	39	32	743	634	17.2	1,751	1,790	-2.2
Pennsylvania Total	1,324	1,381	1,237	25,981	26,099	-0.5	64,815	65,792	-1.5
Anthracite	40	42	29	728	605	20.4	1,675	1,539	8.8
Bituminous	1,284	1,339	1,208	25,253	25,494	-0.9	63,140	64,253	-1.7
Tennessee	52	54	46	981	1,034	-5.1	2,582	2,697	-4.2
Texas	861	898	759	16,516	15,083	9.5	43,171	43,607	-1.0
Utah	487	507	472	9,174	9,370	-2.1	24,009	25,074	-4.2
Virginia	475	496	527	9,828	10,928	-10.1	24,167	28,969	-16.6
Washington	--	--	--	--	--	--	0	1,372	-100.0
West Virginia Total	3,124	3,258	2,872	60,987	59,885	1.8	153,736	151,386	1.6
Northern	950	991	787	18,959	17,210	10.2	43,541	41,934	3.8
Southern	2,174	2,267	2,085	42,027	42,675	-1.5	110,196	109,453	0.7
Wyoming	8,228	8,231	9,059	173,846	166,136	4.6	458,769	447,232	2.6
Appalachian Total	7,627	7,955	7,107	149,467	148,524	0.6	377,246	383,101	-1.5
Interior Total	3,097	3,183	2,661	60,420	56,452	7.0	150,057	150,295	-0.2
Western Total	11,519	11,663	12,256	237,821	228,050	4.3	627,520	617,080	1.7
East of Miss. River	9,739	10,123	8,949	190,774	188,181	1.4	477,810	483,680	-1.2
West of Miss. River	12,505	12,679	13,075	256,934	244,845	4.9	677,013	666,796	1.5
Bituminous and Lignite	22,204	22,760	21,995	446,980	432,421	3.4	1,153,148	1,148,937	0.4
Anthracite	40	42	29	728	605	20.4	1,675	1,539	8.8
U.S. Total	22,244	22,802	22,024	447,708	433,026	3.4	1,154,822	1,150,475	0.4
Railroad Cars Loaded	146,016	151,108	142,511	2,935,663	2,806,071	4.6	7,533,624	7,410,806	1.7

Source: Energy Information Administration



Volume 76 No. 20

OUTPUT FOR WEEK ENDED - May 17, 2008

May 21, 2008

The net available amount of electric energy distributed by the Total Electric Utility Industry+ for the week ended Saturday, **May 17, 2008** was **69,639** gigawatthours (GWh), according to the Edison Electric Institute. This is equivalent to **174** on the weekly electric output index.

WEEKLY ELECTRIC OUTPUT BY GEOGRAPHIC DIVISION

(48 CONTIGUOUS STATES)

	Week Ended May 17		52 Weeks Ended May 17	
	GWh Output	% Increase Over Corresponding Week of 2007	GWh Output	% Increase Over Corresponding Period of 2007
New England	2,116	-7.9	133,196	-0.1
Mid-Atlantic	7,587	-1.3	455,909	1.0
Central Industrial	11,753	-3.5	723,009	2.1
West Central	5,880	-6.4	353,755	1.7
Southeast	18,766	-1.0	1,108,808	2.0
South Central	10,898	-2.3	599,520	-0.9
Rocky Mountain	4,518	-10.7	279,083	5.6
Pacific Northwest	2,928	8.5	165,647	7.3
Pacific Southwest	5,193	-3.3	289,236	-1.7
Total United States	69,639	-2.9	4,108,163	1.5

WEEKLY ELECTRIC OUTPUT IN PREVIOUS WEEKS--GWh

Week Ended	2008	Week Ended	2007	% Inc. (08/07)	52 Weeks Ended	2008	% Inc. (08/07)
Apr 26	70,763	Apr 28	69,254	2.2	Apr 26	4,113,060	1.8
May 03	69,554	May 05	70,567	-1.4	May 03	4,112,047	1.8
May 10	70,932	May 12	72,758	-2.5	May 10	4,110,220	1.6
May 17	69,639	May 19	71,696	-2.9	May 17	4,108,163	1.5
May 17	1,499,952	May 19	1,492,402	0.5	YEAR TO DATE, FIRST 20 WEEKS		

WEEKLY ELECTRIC OUTPUT INDEX--TOTAL U.S.*

SEASONALLY ADJUSTED 1982 = 100

Week Ended	2008	Week Ended	2007	Week Ended	2006
Apr 26	185	Apr 28	182	Apr 29	179
May 03	180	May 05	183	May 06	177
May 10	179	May 12	183	May 13	175
May 17	174	May 19	178	May 20	171

* Excludes Alaska and Hawaii.

+ Includes investor-owned companies, cooperatives and government-owned utilities.

Copyright © 2008 Edison Electric Institute. All rights reserved.

WEEKLY ELECTRIC OUTPUT BY GEOGRAPHIC DIVISION (48 CONTIGUOUS STATES)

	Week Ended			NMA CUMULATIVE JANUARY WEEK ONE TO			52 Weeks Ended		
	17-May 2008 GWh Output	19-May 2007 GWh Output	% Increase Over Corresponding Week of 2007	17-May 2008 GWh Output	19-May 2007 GWh Output	% Increase Over Corresponding Week of 2007	17-May 2008 GWh Output	19-May 2007 GWh Output	% Increase Over Corresponding Week of 2007
New England	2,116	2,299	-8.0%	49,398	50,648	-2.5%	133,196	133,308	-0.1%
Mid-Atlantic	7,587	7,690	-1.3%	166,013	168,773	-1.6%	455,909	451,593	1.0%
Central Industrial	11,753	12,175	-3.5%	270,947	270,078	0.3%	723,009	708,237	2.1%
West Central	5,880	6,281	-6.4%	130,369	128,829	1.2%	353,755	347,716	1.7%
Southeast	18,766	18,961	-1.0%	403,088	400,939	0.5%	1,108,808	1,087,281	2.0%
South Central	10,898	11,157	-2.3%	210,936	209,549	0.7%	599,520	604,679	-0.9%
Rocky Mountain	4,518	5,060	-10.7%	94,173	92,519	1.8%	279,083	264,351	5.6%
Pacific Northwest	2,928	2,700	8.4%	70,120	63,553	10.3%	165,647	154,432	7.3%
Pacific Southwest	5,193	5,373	-3.4%	104,909	107,513	-2.4%	289,236	294,267	-1.7%
Total United States *	69,639	71,696	-2.9%	1,499,953	1,492,401	0.5%	4,108,163	4,045,864	1.5%

Notes: EEI output data are an estimate of electricity load made available for distribution derived as weekly net generation + purchases from non-utilities + net imports - exports - sales for resale. It is not meant to be a measure of electricity generation for the U.S. EEI survey data represent the majority of national distribution (large utilities, large government power projects, some independent and large municipal power projects). The remaining segment of the industry (smaller producers) is estimated. Non-utility generation is captured via direct sales to utilities.

* Excludes Alaska and Hawaii

** Less than one-tenth of one percent

SOURCE: Edison Electric Institute (EEI), *Weekly Electric Output Report*.

AMERICAN IRON AND STEEL INSTITUTE
 1140 Connecticut Avenue, Suite 705
 Washington, D.C. 20036

May 19, 2008

ESTIMATED WEEKLY RAW STEEL* PRODUCTION

<u>Period</u>	<u>Thousand Net Tons</u>	<u>Percent Change from Previous Period</u>	<u>Percent Capability Utilization**</u>	<u>Production by District</u>	
				<u>Week Ending</u>	
				<u>May 17</u>	<u>May 10</u>
<u>Week Ending</u>					
May 17, 2008	2,146	0.4	89.9	181	177
May 17, 2007	2,121	1.1	88.4	214	212
May 10, 2008	2,136	1.8	89.5	86	87
				106	107
				520	512
				247	259
				698	687
				94	95
				2146	2136
<u>Year-to-Date+</u>					
May 17, 2008	41,736	3.4	88.7		
May 17, 2007	40,399	-	85.1		

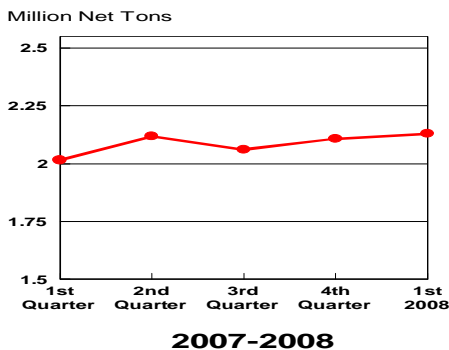
*Raw steel production tonnage included in this report is estimated based on a sampling of steel producers. Therefore, this report should be used primarily to assess production trends. The AISI production report "AIS 7," produced monthly and available by subscription, provides a more accurate summary of steel production based on data supplied by companies representing approximately 75% of U.S. production capacity.

+Includes revisions for previous months

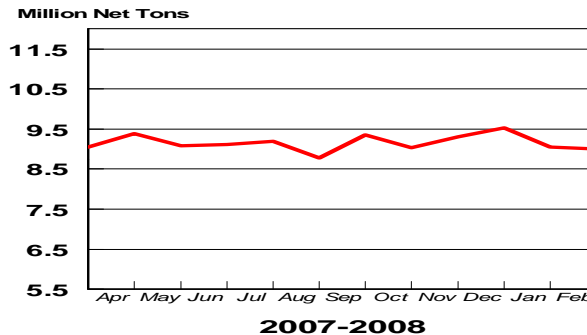
NOTE: Capability for the Fourth Quarter 2007 is approximately 31.3 million net tons vs 30.7 million net tons for the same period last year, and 30.1 million tons for the third quarter of 2007.

Capability -	2003 approx.	2.3 million tons/week
	2004	2.2
	2005	2.3
	2006	2.4
	2007	2.4

Average Weekly Raw Steel Production

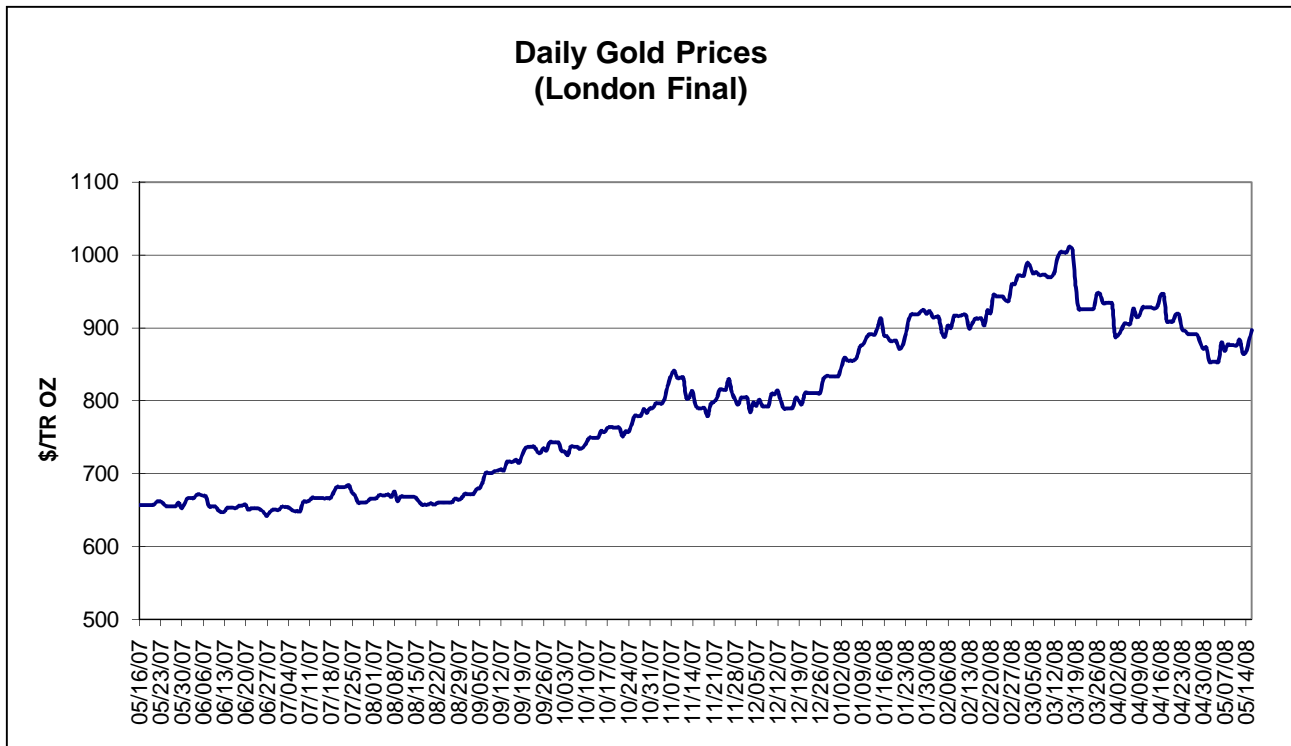
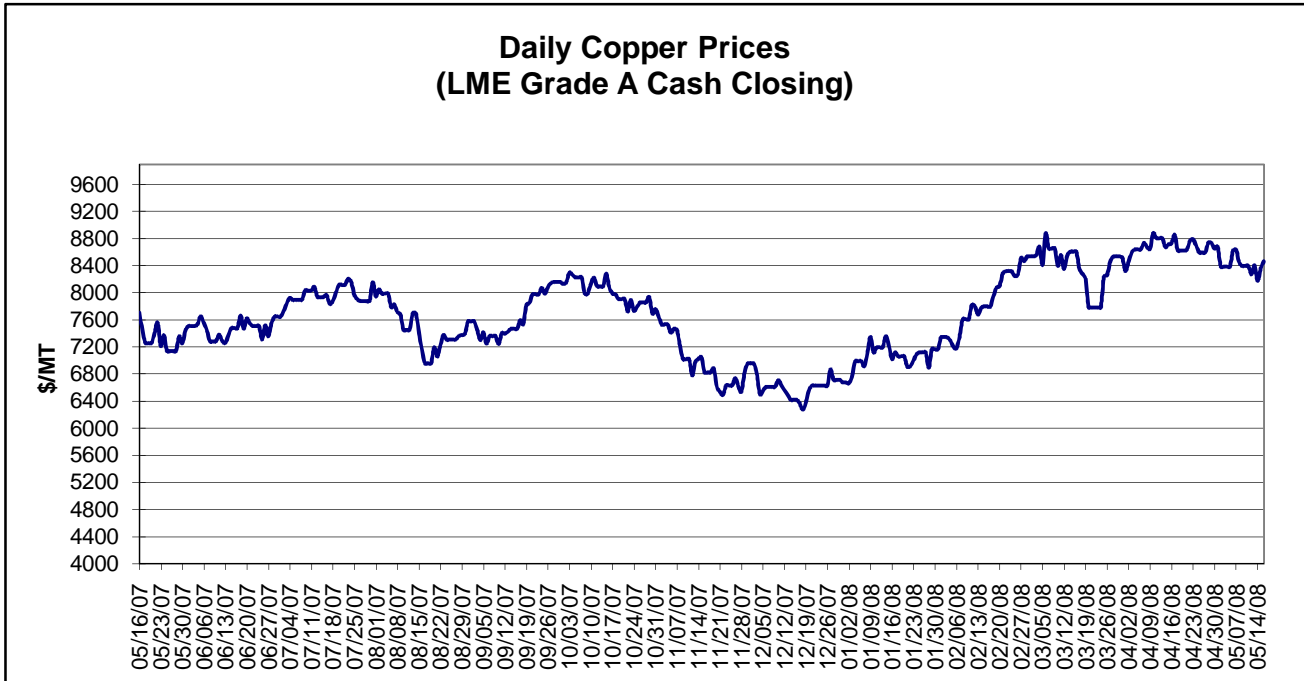


Monthly Raw Steel Production



*Steel in the first solid state after melting suitable for further processing or sale, including ingots, steel for castings and strand or pressure cast blooms, slabs, or other product forms.

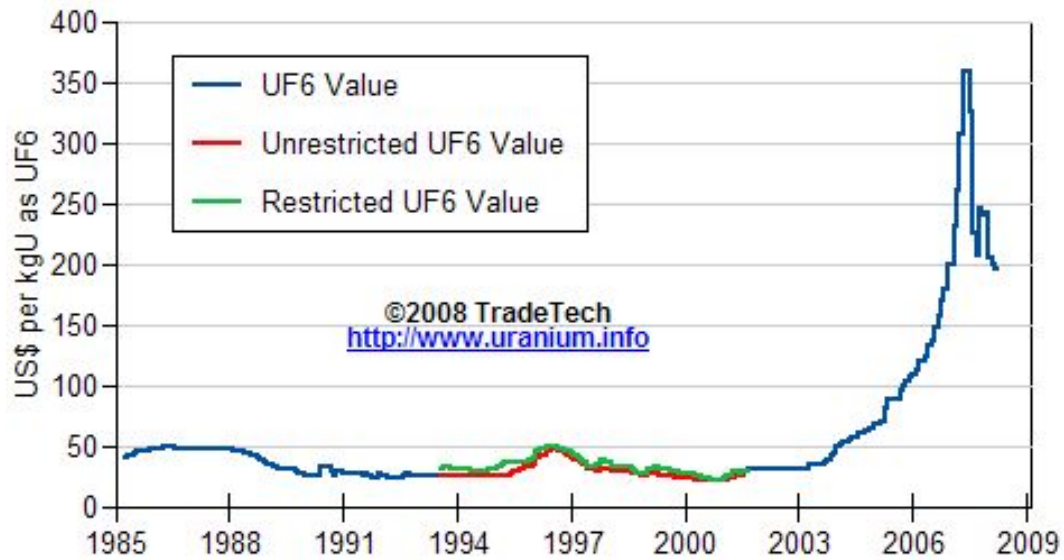
** Based on tonnage capability to produce raw steel for a sustained full order book.



Data reflect closings on weekends and holidays.

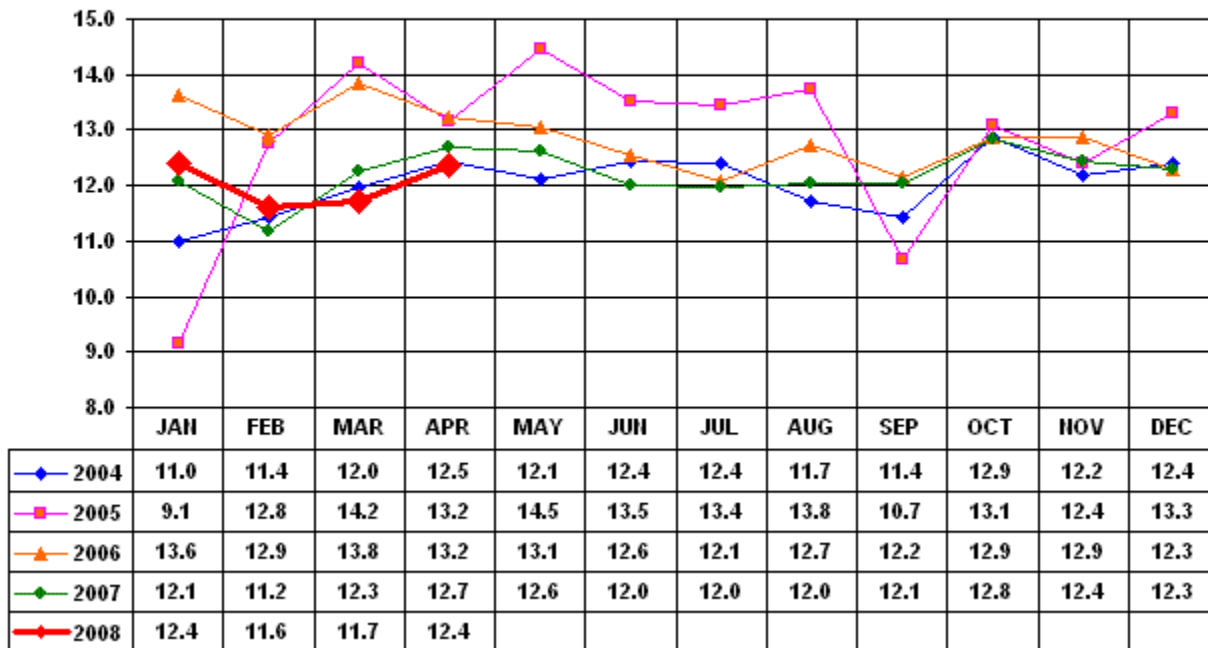
Source: Platts Metals Week

Trade Tech's Uranium (UF6) Monthly Spot Prices (US\$/kg as UF6)



Source: Trade Tech, Uranium Info Website – <http://www.uranium.info>

Coal and Coke Monthly Tonnage Indicator for Internal U.S. Waterways



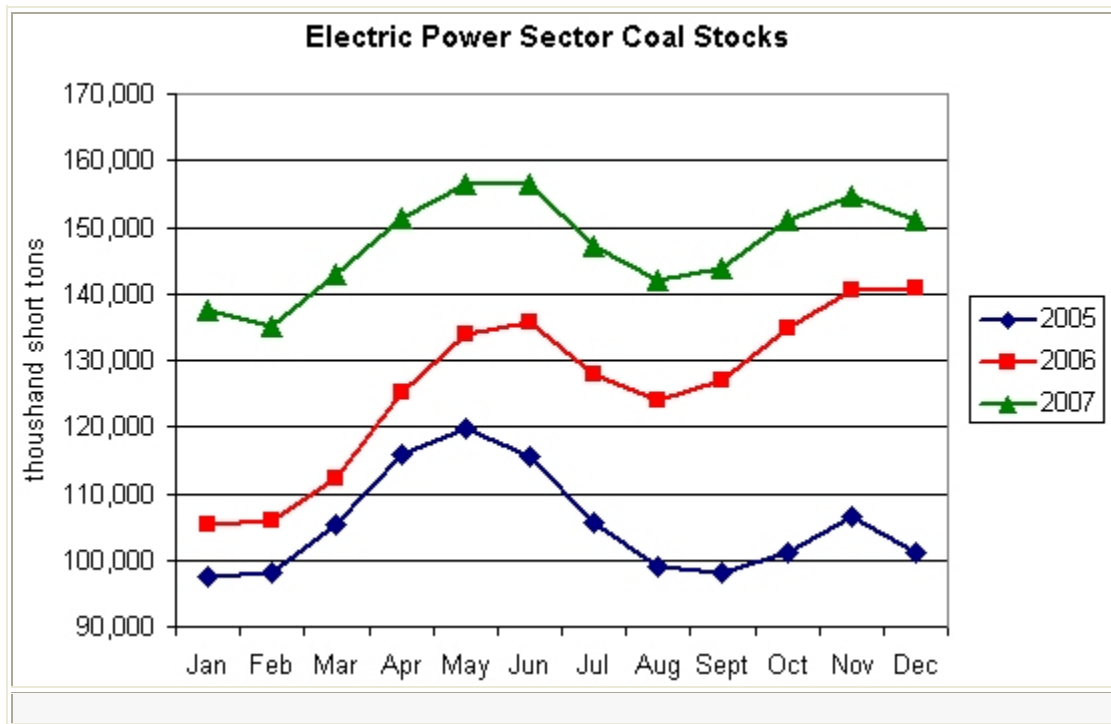
Source: U.S. Army Corps of Engineers, Waterborne Commerce Statistics Center

EIA Weekly Spot Coal Prices

The following average spot coal prices appear in the graphic below, for the previous and most recent weeks:
(Dollars per Short Ton)

Week Ended	Central Appalachia 12,500 Btu, 1.2 SO2	Northern Appalachia 13,000 Btu, <3.0 SO2	Illinois Basin 11,800 Btu, 5.0 SO2	Powder River Basin 8,800 Btu, 0.8 SO2	Uinta Basin 11,700 Btu, 0.8 SO2
04-Apr-08	\$86.25	\$100.00	\$52.00	\$14.25	\$44.00
11-Apr-08	\$86.25	\$100.00	\$56.00	\$14.20	\$44.00
18-Apr-08	\$86.25	\$105.00	\$56.00	\$14.20	\$44.00
25-Apr-08	\$94.25	\$105.00	\$57.00	\$14.15	\$44.00
02-May-08	\$94.25	\$105.00	\$58.00	\$14.20	\$44.00
09-May-08	\$96.75	\$105.00	\$58.00	\$14.00	\$44.00
16-May-08	\$100.90	\$105.00	\$58.00	\$14.00	\$44.00

Source: Energy Information Administration (from Platts *Coal Outlook*, "Weekly Price Survey")



Source: Energy Information Administration