
National Mining Association

Weekly Statistical Summary

May 25, 2007 Edition
(Data for Week Ending May 19, 2007)

Prepared by
National Mining Association



Suite 500 East, 101 Constitution Avenue, NW
Washington, DC, 20001
Phone (202) 463-2600
Visit us at <http://www.nma.org>

NMA Weekly Statistical Summary

Vol. 45, No. 20
Dated 05/25/07

PRODUCTION, CONSUMPTION & TRADE						
	Week Ended			Cumulative Jan 1 to		
	05/19/07	05/20/06	% Chng	05/19/07	05/20/06	% Chng
EIA Coal Production (000 Tons):						
Week Ended/Year to Date	21,847	22,342	-2.2%	436,514	449,017	-2.8%
52 Weeks Ended	1,147,269	1,141,514	0.5%			
Month Ended -- April						
	April 07/06		% Chng	Jan - Apr 07/06		% Chng
	92,304	95,399	-3.2%	377,502	384,530	-1.8%
MONTH ENDED AND CUMULATIVE NUMBERS ARE PRELIMINARY AND SUBJECT TO CHANGE						
DOC Bituminous Coal Trade (000 Tons)						
Exports:	March 07/06			Jan - Mar 07/06		
			% Chng			% Chng
Metallurgical	2,769	2,396	15.6%	6,718	6,565	2.3%
Steam	1,292	1,328	-2.7%	4,296	3,929	9.3%
Imports:	3,285	3,211	2.3%	8,786	8,958	-1.9%
Week Ended						
	05/19/07	05/20/06	% Chng	Cumulative Jan 1 to		
				05/19/07	05/20/06	% Chng
EEl Electric Output (Mil. Kwh)	71,696	69,451	3.2%	1,492,402	1,435,405	4.0%
AISI Raw Steel Output (000 Tons)	2,085	2,215	-5.9%	39,754	42,853	-7.2%
EIA U.S. PETROLEUM DATA						
4-Week Averages 000 Barrels per Day						
Week Ending						
	05/18/07	05/18/06	% Chng	Cumulative Daily Averages		
				2007	2006	% Chng
PETROLEUM SUPPLY:						
Domestic Crude	5,157	5,087	1.4	5,177	5,051	2.5
Net Imports (Incl. SPR)	10,597	10,031	5.6	9,940	9,831	1.1
SPR Stocks W/D or Added	-24	-38	--	-8	-27	--
Other Stocks W/D or added	-347	68	--	-201	-147	--
Natural Gas Liquids Prod.	2,247	2,397	-6.3	2,298	2,135	7.6



NMA

THE AMERICAN RESOURCE

National Mining Association Web Site: [http:// www.nma.org](http://www.nma.org)

EIA Estimated Weekly U.S. Coal Production Overview (Thousand Short Tons)

Coal-Producing Region and State	Week Ended			Year to Date			52 Weeks Ended		
	5/19/2007	5/12/2007	5/20/2006	5/19/2007	5/19/2006	Percent Change	5/19/2007	5/20/2006	Percent Change
Alabama	373	381	357	8,004	8,095	-1.1	18,929	20,504	-7.7
Alaska	25	26	30	510	548	-6.8	1,388	1,253	10.7
Arizona	144	147	132	3,271	3,050	7.2	8,437	10,177	-17.1
Arkansas	1	1	*	10	4	141.8	29	6	377.0
Colorado	713	727	879	14,708	13,249	11.0	37,688	36,419	3.5
Illinois	601	613	594	12,197	12,476	-2.2	31,887	31,522	1.2
Indiana	663	676	675	13,453	13,844	-2.8	35,329	34,951	1.1
Kansas	8	9	6	141	106	32.6	461	218	111.0
Kentucky Total	2,158	2,201	2,307	44,094	48,551	-9.2	115,825	121,698	-4.8
Eastern	1,620	1,652	1,808	33,438	37,683	-11.3	88,789	94,623	-6.2
Western	539	549	499	10,656	10,868	-2.0	27,036	27,075	-0.1
Louisiana	19	19	106	921	1,382	-33.3	3,642	4,030	-9.6
Maryland	97	99	108	2,152	2,209	-2.6	4,996	5,323	-6.1
Mississippi	48	60	73	1,341	1,411	-5.0	3,720	3,631	2.4
Missouri	6	6	9	84	218	-61.5	260	600	-56.7
Montana	751	766	820	15,088	15,361	-1.8	41,451	40,681	1.9
New Mexico	469	478	566	9,541	9,950	-4.1	25,493	28,212	-9.6
North Dakota	490	500	510	10,809	11,545	-6.4	29,675	30,120	-1.5
Ohio	445	454	413	9,201	9,188	0.1	22,720	24,403	-6.9
Oklahoma	38	38	39	772	849	-9.1	1,921	1,994	-3.6
Pennsylvania Total	1,142	1,165	1,349	23,313	26,697	-12.7	62,681	67,750	-7.5
Anthracite	26	26	27	518	599	-13.4	1,434	1,658	-13.5
Bituminous	1,116	1,139	1,322	22,795	26,099	-12.7	61,247	66,092	-7.3
Tennessee	53	54	54	1,078	1,150	-6.2	2,732	3,111	-12.2
Texas	857	873	880	17,104	17,120	-0.1	45,417	46,088	-1.5
Utah	434	442	484	8,706	10,402	-16.3	24,310	25,488	-4.6
Virginia	536	547	555	11,177	11,927	-6.3	29,097	28,763	1.2
Washington	-	-	60	-	1,208	-100.0	1,372	4,412	-68.9
West Virginia Total	2,757	2,812	2,997	56,806	61,391	-7.5	147,190	155,012	-5.0
Northern	854	871	875	17,753	17,821	-0.4	42,599	43,998	-3.2
Southern	1,903	1,941	2,122	39,053	43,570	-10.4	104,591	111,014	-5.8
Wyoming	9,020	7,932	8,340	172,032	167,086	3.0	450,619	415,147	8.5
Appalachian Total	7,023	7,162	7,641	145,169	158,339	-8.3	377,135	399,490	-5.6
Interior Total	2,778	2,844	2,882	56,680	58,280	-2.7	149,702	150,115	-0.3
Western Total	12,046	11,018	11,819	234,665	232,398	1.0	620,432	591,909	4.8
East of Miss. River	8,874	9,060	9,482	182,817	196,938	-7.2	475,107	496,669	-4.3
West of Miss. River	12,973	11,963	12,860	253,697	252,079	0.6	672,162	644,845	4.2
Bituminous and Lignite	21,822	20,998	22,315	435,996	448,419	-2.8	1,145,835	1,139,856	0.5
Anthracite	26	26	27	518	599	-13.4	1,434	1,658	-13.5
U.S. Total	21,847	21,024	22,342	436,514	449,017	-2.8	1,147,269	1,141,514	0.5
Railroad Cars Loaded	142,511	135,383	150,005	2,806,071	2,850,622	-1.6	7,410,806	7,224,999	2.6

Source: Energy Information Administration



Volume 75 No. 20

OUTPUT FOR WEEK ENDED - May 19, 2007

May 23, 2007

The net available amount of electric energy distributed by the Total Electric Utility Industry+ for the week ended Saturday, **May 19, 2007** was **71,696** gigawatthours (GWh), according to the Edison Electric Institute. This is equivalent to **178** on the weekly electric output index.

WEEKLY ELECTRIC OUTPUT BY GEOGRAPHIC DIVISION
(48 CONTIGUOUS STATES)

	Week Ended May 19		52 Weeks Ended May 19	
	GWh Output	% Increase Over Corresponding Week of 2006	GWh Output	% Increase Over Corresponding Period of 2006
New England	2,299	0.7	133,308	-1.0
Mid-Atlantic	7,690	3.8	451,593	-0.2
Central Industrial	12,175	5.6	708,237	0.4
West Central	6,281	6.0	347,716	0.6
Southeast	18,961	7.3	1,087,281	1.1
South Central	11,157	-4.3	604,679	1.5
Rocky Mountain	5,060	2.7	264,351	3.6
Pacific Northwest	2,700	4.2	154,432	2.8
Pacific Southwest	5,373	-1.5	294,267	1.4
Total United States	71,696	3.2	4,045,865	1.0

WEEKLY ELECTRIC OUTPUT IN PREVIOUS WEEKS--GWh

Week Ended	2007	Week Ended	2006	% Inc. (07/06)	52 Weeks Ended	2007	% Inc. (07/06)
Apr 28	69,254	Apr 29	68,651	0.9	Apr 28	4,039,026	1.0
May 05	70,567	May 06	68,872	2.5	May 05	4,040,721	0.9
May 12	72,758	May 13	69,860	4.1	May 12	4,043,619	1.0
May 19	71,696	May 20	69,451	3.2	May 19	4,045,865	1.0
May 19	1,492,402	May 20	1,435,405	4.0	YEAR TO DATE, FIRST 20 WEEKS		

WEEKLY ELECTRIC OUTPUT INDEX--TOTAL U.S.*
SEASONALLY ADJUSTED 1982 = 100

Week Ended	2007	Week Ended	2006	Week Ended	2005
Apr 28	182	Apr 29	179	Apr 30	173
May 05	183	May 06	177	May 07	165
May 12	183	May 13	175	May 14	172
May 19	178	May 20	171	May 21	176

* Excludes Alaska and Hawaii

+ Includes investor-owned companies, cooperatives and government-owned utilities.

Copyright © 2007 Edison Electric Institute. All rights reserved.

WEEKLY ELECTRIC OUTPUT BY GEOGRAPHIC DIVISION (48 CONTIGUOUS STATES)

	Week Ended			NMA CUMULATIVE JANUARY 1 to			52 Weeks Ended		
	19-May 2007 GWh Output	20-May 2006 GWh Output	% Increase Over Corresponding Week of 2006	19-May 2007 GWh Output	20-May 2006 GWh Output	% Increase Over Corresponding Week of 2006	19-May 2007 GWh Output	20-May 2006 GWh Output	% Increase Over Corresponding Week of 2006
New England	2,299	2,284	0.7%	50,648	49,164	3.0%	133,308	134,645	-1.0%
Mid-Atlantic	7,690	7,407	3.8%	168,773	160,929	4.9%	451,593	452,568	-0.2%
Central Industrial	12,175	11,531	5.6%	270,078	256,726	5.2%	708,237	705,217	0.4%
West Central	6,281	5,925	6.0%	128,829	125,262	2.8%	347,716	345,575	0.6%
Southeast	18,961	17,670	7.3%	400,939	385,749	3.9%	1,087,281	1,075,173	1.1%
South Central	11,157	11,660	-4.3%	209,549	203,242	3.1%	604,679	595,803	1.5%
Rocky Mountain	5,060	4,928	2.7%	92,519	88,792	4.2%	264,351	255,234	3.6%
Pacific Northwest	2,700	2,590	4.2%	63,553	60,493	5.1%	154,432	150,257	2.8%
Pacific Southwest	<u>5,373</u>	<u>5,456</u>	-1.5%	<u>107,513</u>	<u>105,050</u>	2.3%	<u>294,267</u>	<u>290,282</u>	1.4%
Total United States *	71,696	69,451	3.2%	1,492,401	1,435,407	4.0%	4,045,864	4,004,754	1.0%

Notes: EEI output data are an estimate of electricity load made available for distribution derived as weekly net generation + purchases from non-utilities + net imports - exports - sales for resale. It is not meant to be a measure of electricity generation for the U.S. EEI survey data represent the majority of national distribution (large utilities, large government power projects, some independent and large municipal power projects). The remaining segment of the industry (smaller producers) is estimated. Non-utility generation is captured via direct sales to utilities.

* Excludes Alaska and Hawaii

** Less than one-tenth of one percent

SOURCE: Edison Electric Institute (EEI), *Weekly Electric Output Report*.

AMERICAN IRON AND STEEL INSTITUTE
 1140 Connecticut Avenue, Suite 705
 Washington, D.C. 20036

May 21, 2007

ESTIMATED WEEKLY RAW STEEL* PRODUCTION

<u>Period</u>	<u>Thousand Net Tons</u>	<u>Percent Change from Previous Period</u>	<u>Percent Capability Utilization**</u>	<u>Production by District</u>		
				<u>Week Ending May 19</u>	<u>Week Ending May 12</u>	
<u>Week Ending</u>				North East Coast	125	135
				Pgh/Youngstown	225	226
May 19, 2007	2,085	0.8	87.2	Lake Erie	108	101
May 19, 2006	2,215	-5.8	92.5	Detroit	88	87
May 12, 2007	2,068	0.2	86.4	Indiana/Chicago	540	549
				Midwest	253	238
<u>Year-to-Date+</u>				Southern	655	651
May 19, 2007	39,754	-7.2	84.3	Western	91	81
May 19, 2006	42,853	-	90.2	Total	2085	2068

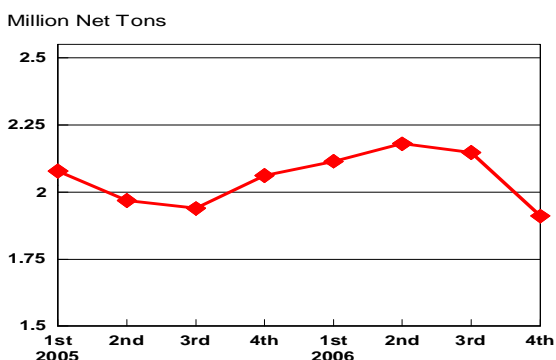
*Raw steel production tonnage included in this report is estimated based on a sampling of steel producers. Therefore, this report should be used primarily to assess production trends. The AISI production report "AIS 7," produced monthly and available by subscription, provides a more accurate summary of steel production based on data supplied by companies representing approximately 75% of U.S. production capacity.

+Includes revisions for previous months

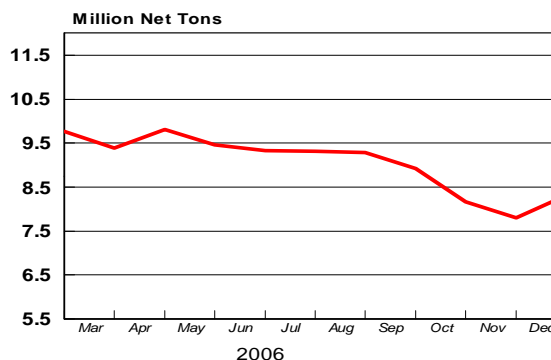
NOTE: Capability for the First Quarter 2007 is approximately 31.2 million net tons vs 30.5 million net tons for the same period last year, and 30.7 million tons for the fourth quarter of 2006.

Capability -	2003 approx.	2004	2005	2006	2007
	2.3 million tons/week	2.2	2.3	2.4	2.4

Average Weekly Raw Steel Production

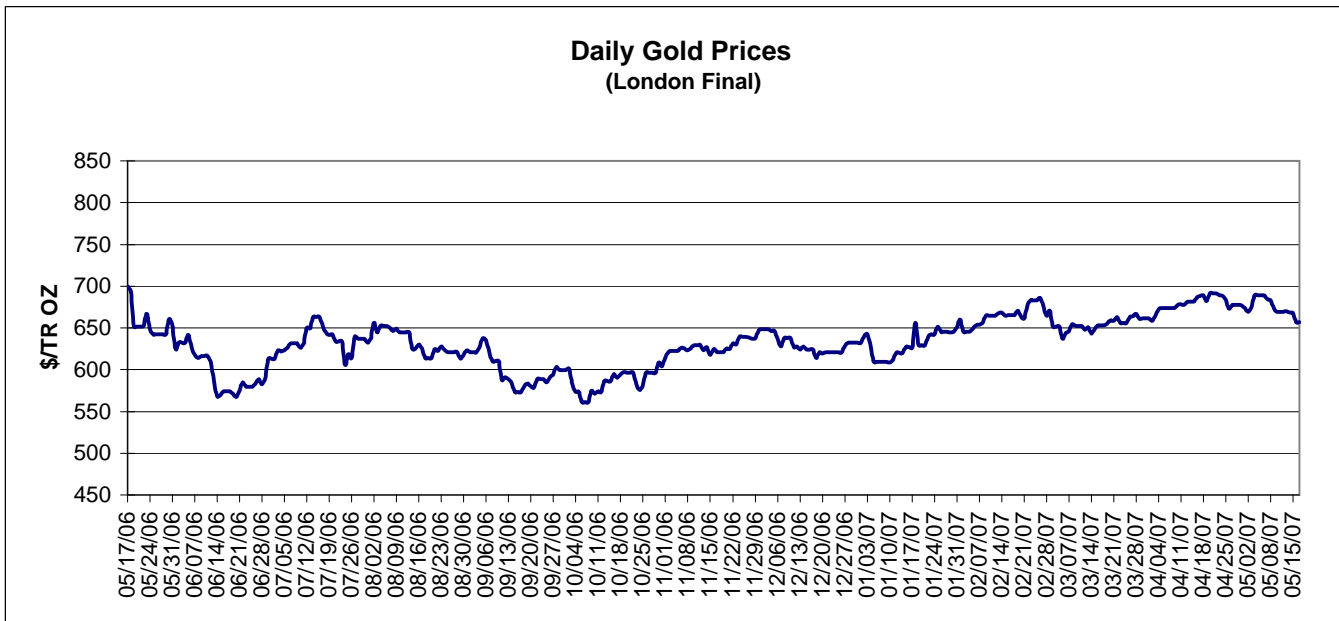
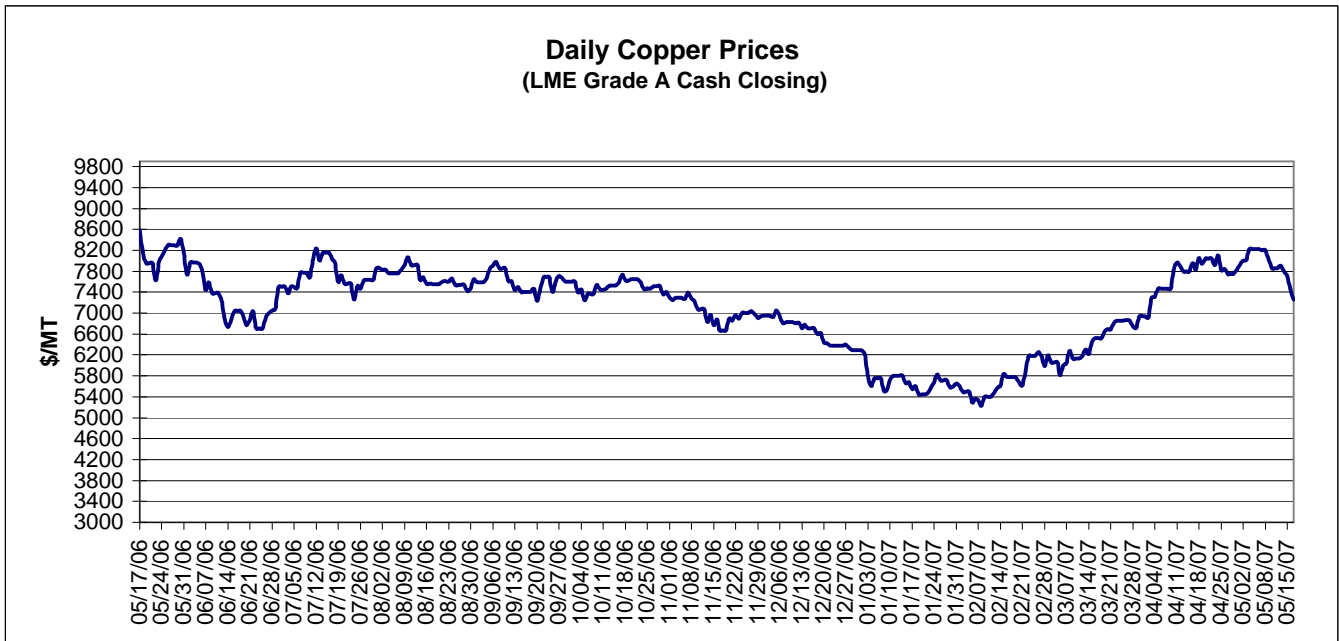


MONTHLY RAW STEEL PRODUCTION



*Steel in the first solid state after melting suitable for further processing or sale, including ingots, steel for castings and strand or pressure cast blooms, slabs, or other product forms.

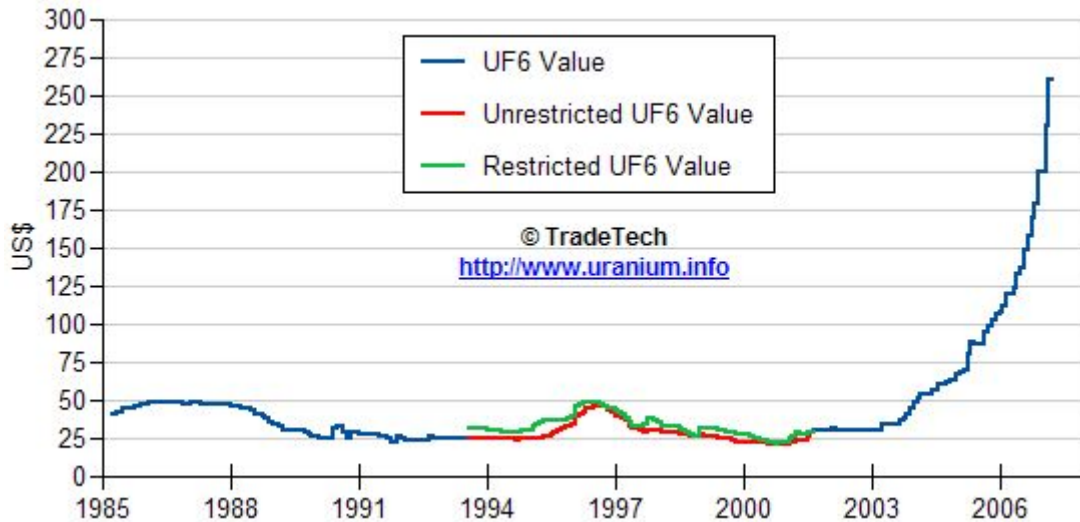
** Based on tonnage capability to produce raw steel for a sustained full order book.



Data reflect closings on weekends and holidays.

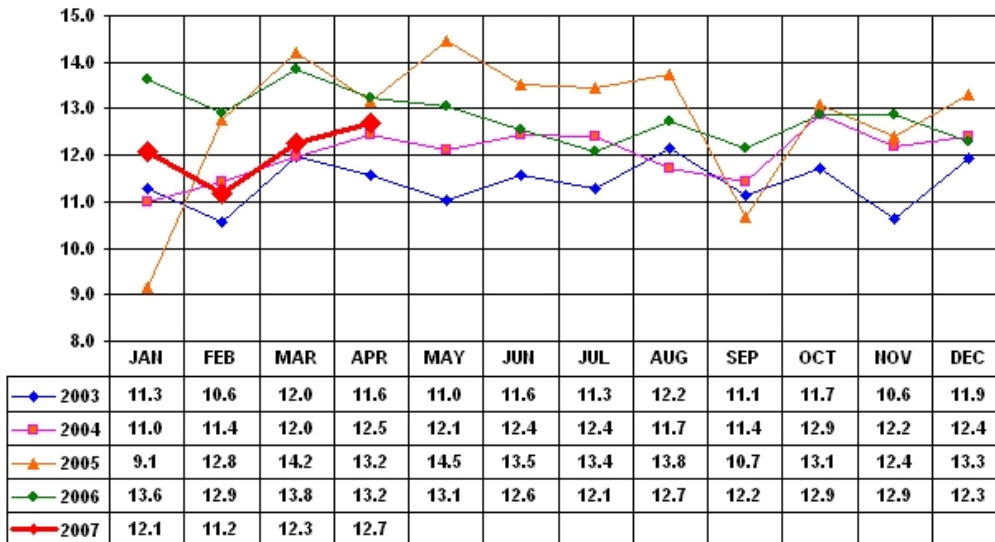
Source: Platts Metals Week

Trade Tech's Uranium (UF6) Monthly Spot Prices (US\$/kg as UF6)



Source: Trade Tech, Uranium Info Website – <http://www.uranium.info>

Coal and Coke Monthly Tonnage Indicator for Internal U.S. Waterways



Source: U.S. Army Corps of engineers, Waterborne Commerce Statistics Center