
National Mining Association

Weekly Statistical Summary

May 30, 2008 Edition
(Data for Week Ending May 24, 2008)

Prepared by
National Mining Association



Suite 500 East, 101 Constitution Avenue, NW
Washington, DC, 20001
Phone (202) 463-2600
Visit us at <http://www.nma.org>

NMA Weekly Statistical Summary

Vol. 46, No. 21
Dated 05/30/08

PRODUCTION, CONSUMPTION & TRADE						
	Week Ended			* Cumulative Jan 1 to		
	05/24/08	05/26/07	% Chng	05/24/08	05/24/07	% Chng
EIA Coal Production (000 Tons):						
Week Ended/Year to Date	21,951	22,081	-0.6%	469,660	455,114	3.2%
52 Weeks Ended	1,154,693	1,150,387	0.4%			
* Due to leap year, 2008 cumulative reflects one extra day of tonnage.						
	April 08/07		% Chng	Jan - Apr 08/07		% Chng
Month Ended -- April	98,009	93,048	5.3%	393,309	378,948	3.8%
MONTH ENDED AND CUMULATIVE NUMBERS ARE PRELIMINARY AND SUBJECT TO CHANGE						
DOC Bituminous Coal Trade (000 Tons)						
	March 08/07		% Chng	Jan - Mar 08/07		% Chng
Exports:						
Metallurgical	3,745	2,769	35.2%	9,101	6,718	35.5%
Steam	2,901	1,292	124.5%	6,600	4,296	53.6%
Imports:	2,640	3,285	-19.6%	7,640	8,786	-13.0%
	Week Ended			* Cumulative Jan 1 to		
	05/24/08	05/26/07	% Chng	05/24/08	05/26/07	% Chng
EEl Electric Output (Mil. Kwh)	73,798	73,946	-0.2%	1,573,750	1,566,348	0.5%
AISI Raw Steel Output (000 Tons)	2,140	2,121	0.9%	43,876	42,520	3.2%
EIA U.S. PETROLEUM DATA						
4-Week Averages						
000 Barrels per Day						
	Week Ending			Cumulative Daily Averages		
	05/23/08	05/23/07	% Chng	2008	2007	% Chng
PETROLEUM SUPPLY:						
Domestic Crude	5,100	5,235	-2.6	5,100	5,194	-1.8
Net Imports (Incl. SPR)	9,663	10,236	-5.6	9,699	9,986	-2.9
SPR Stocks W/D or Added	-70	-28	--	-45	-10	--
Other Stocks W/D or added	299	-318	--	-146	232	--
Natural Gas Liquids Prod.	2,522	2,449	3.0	2,343	2,347	-0.2



NMA

THE AMERICAN RESOURCE National Mining Association Web Site: [http:// www.nma.org](http://www.nma.org)

EIA Estimated Weekly U.S. Coal Production Overview (Thousand Short Tons)

Coal-Producing Region and State	Week Ended			Year to Date			Percent Change	52 Weeks Ended		
	5/24/2008	5/17/2008	5/26/2007	5/24/2008	5/24/2007	5/24/2008		5/26/2007	Percent Change	
Alabama	407	390	353	8,151	7,915	3.0	19,680	18,561	6.0	
Alaska	29	27	26	536	656	-18.4	1,198	1,510	-20.7	
Arizona	122	116	155	2,515	3,234	-22.2	7,233	8,303	-12.9	
Arkansas	2	2	1	40	28	40.7	94	47	99.9	
Colorado	765	733	776	14,994	13,901	7.9	37,272	36,222	2.9	
Illinois	691	663	676	14,053	14,833	-5.3	31,604	34,629	-8.7	
Indiana	739	708	666	14,905	13,852	7.6	35,910	34,868	3.0	
Kansas	11	11	9	212	175	21.0	455	490	-7.0	
Kentucky Total	2,476	2,373	2,228	48,610	47,054	3.3	116,301	117,509	-1.0	
Eastern	1,800	1,725	1,715	35,447	35,584	-0.4	86,478	90,033	-3.9	
Western	676	648	513	13,164	11,470	14.8	29,822	27,477	8.5	
Louisiana	93	70	33	1,616	824	96.2	3,846	3,464	11.0	
Maryland	54	51	42	940	920	2.2	2,306	3,667	-37.1	
Mississippi	45	93	47	1,336	1,391	-4.0	3,478	3,709	-6.2	
Missouri	5	5	4	98	93	4.9	240	261	-8.1	
Montana	932	893	764	17,961	15,879	13.1	45,264	41,645	8.7	
New Mexico	503	482	572	9,814	9,903	-0.9	24,240	25,420	-4.6	
North Dakota	575	551	520	11,908	11,764	1.2	29,647	30,233	-1.9	
Ohio	507	486	394	9,919	8,647	14.7	23,743	21,848	8.7	
Oklahoma	39	38	33	783	666	17.4	1,758	1,785	-1.5	
Pennsylvania Total	1,382	1,324	1,277	27,363	27,368	*	64,920	65,742	-1.2	
Anthracite	42	40	30	770	635	21.4	1,687	1,541	9.5	
Bituminous	1,340	1,284	1,247	26,593	26,733	-0.5	63,233	64,201	-1.5	
Tennessee	54	52	48	1,035	1,081	-4.3	2,589	2,692	-3.8	
Texas	899	861	784	17,415	15,860	9.8	43,285	43,526	-0.6	
Utah	508	487	488	9,681	9,854	-1.8	24,029	25,087	-4.2	
Virginia	496	475	545	10,324	11,468	-10.0	24,118	28,968	-16.7	
Washington	--	--	--	--	--	--	0	1,313	-100.0	
West Virginia Total	3,260	3,124	2,966	64,246	62,831	2.3	154,030	151,407	1.7	
Northern	991	950	813	19,951	18,017	10.7	43,719	41,886	4.4	
Southern	2,268	2,174	2,154	44,296	44,813	-1.2	110,310	109,521	0.7	
Wyoming	7,358	8,228	8,674	181,204	174,916	3.6	457,453	447,482	2.2	
Appalachian Total	7,959	7,627	7,340	157,426	155,814	1.0	377,865	382,917	-1.3	
Interior Total	3,200	3,097	2,765	63,620	59,192	7.5	150,492	150,255	0.2	
Western Total	10,792	11,519	11,976	248,613	240,108	3.5	626,337	617,214	1.5	
East of Miss. River	10,110	9,739	9,241	200,884	197,359	1.8	478,678	483,600	-1.0	
West of Miss. River	11,841	12,505	12,840	268,776	257,754	4.3	676,014	666,787	1.4	
Bituminous and Lignite	21,909	22,204	22,051	468,889	454,479	3.2	1,153,006	1,148,846	0.4	
Anthracite	42	40	30	770	635	21.4	1,687	1,541	9.5	
U.S. Total	21,951	22,244	22,081	469,660	455,114	3.2	1,154,693	1,150,387	0.4	
Railroad Cars Loaded	142,993	146,016	143,219	3,078,656	2,949,290	4.4	7,533,398	7,408,391	1.7	

Source: Energy Information Administration



Volume 76 No. 21

OUTPUT FOR WEEK ENDED - May 24, 2008

May 29, 2008

The net available amount of electric energy distributed by the Total Electric Utility Industry+ for the week ended Saturday, **May 24, 2008** was **73,798** gigawatthours (GWh), according to the Edison Electric Institute. This is equivalent to **179** on the weekly electric output index.

WEEKLY ELECTRIC OUTPUT BY GEOGRAPHIC DIVISION
(48 CONTIGUOUS STATES)

	Week Ended May 24		52 Weeks Ended May 24	
	GWh Output	% Increase Over Corresponding Week of 2007	GWh Output	% Increase Over Corresponding Period of 2007
New England	2,218	-8.5	132,990	-0.3
Mid-Atlantic	7,532	-7.3	455,313	0.7
Central Industrial	11,660	-8.4	721,938	1.8
West Central	6,066	-8.2	353,213	1.6
Southeast	20,197	1.8	1,109,166	2.0
South Central	12,976	15.8	601,290	-0.2
Rocky Mountain	4,746	-3.4	278,918	5.4
Pacific Northwest	2,877	5.5	165,796	7.2
Pacific Southwest	5,526	2.9	289,391	-1.8
Total United States	73,798	-0.2	4,108,015	1.5

WEEKLY ELECTRIC OUTPUT IN PREVIOUS WEEKS--GWh

Week Ended	2008	Week Ended	2007	% Inc. (08/07)	52 Weeks Ended	2008	% Inc. (08/07)
May 03	69,554	May 05	70,567	-1.4	May 03	4,112,047	1.8
May 10	70,932	May 12	72,758	-2.5	May 10	4,110,220	1.6
May 17	69,639	May 19	71,696	-2.9	May 17	4,108,163	1.5
May 24	73,798	May 26	73,946	-0.2	May 24	4,108,015	1.5
May 24	1,573,750	May 26	1,566,348	0.5	YEAR TO DATE, FIRST 21 WEEKS		

WEEKLY ELECTRIC OUTPUT INDEX--TOTAL U.S.*
SEASONALLY ADJUSTED 1982 = 100

Week Ended	2008	Week Ended	2007	Week Ended	2006
May 03	180	May 05	183	May 06	177
May 10	179	May 12	183	May 13	175
May 17	174	May 19	178	May 20	171
May 24	179	May 26	183	May 27	183

* Excludes Alaska and Hawaii.

+ Includes investor-owned companies, cooperatives and government-owned utilities.

Copyright © 2008 Edison Electric Institute. All rights reserved.

WEEKLY ELECTRIC OUTPUT BY GEOGRAPHIC DIVISION (48 CONTIGUOUS STATES)

	Week Ended			NMA CUMULATIVE JANUARY WEEK ONE TO			52 Weeks Ended		
	24-May 2008 GWh Output	26-May 2007 GWh Output	% Increase Over Corresponding Week of 2007	24-May 2008 GWh Output	26-May 2007 GWh Output	% Increase Over Corresponding Week of 2007	24-May 2008 GWh Output	26-May 2007 GWh Output	% Increase Over Corresponding Week of 2007
New England	2,218	2,424	-8.5%	51,616	53,072	-2.7%	132,990	133,437	-0.3%
Mid-Atlantic	7,532	8,128	-7.3%	173,545	176,901	-1.9%	455,313	452,177	0.7%
Central Industrial	11,660	12,730	-8.4%	282,607	282,808	-0.1%	721,938	709,065	1.8%
West Central	6,066	6,608	-8.2%	136,435	135,437	0.7%	353,213	347,796	1.6%
Southeast	20,197	19,840	1.8%	423,285	420,779	0.6%	1,109,166	1,087,225	2.0%
South Central	12,976	11,206	15.8%	223,912	220,755	1.4%	601,290	602,439	-0.2%
Rocky Mountain	4,746	4,911	-3.4%	98,919	97,430	1.5%	278,918	264,554	5.4%
Pacific Northwest	2,877	2,728	5.5%	72,997	66,281	10.1%	165,796	154,622	7.2%
Pacific Southwest	5,526	5,371	2.9%	110,435	112,884	-2.2%	289,391	294,561	-1.8%
Total United States *	<u>73,798</u>	<u>73,946</u>	-0.2%	<u>1,573,751</u>	<u>1,566,347</u>	0.5%	<u>4,108,015</u>	<u>4,045,876</u>	1.5%

Notes: EEI output data are an estimate of electricity load made available for distribution derived as weekly net generation + purchases from non-utilities + net imports - exports - sales for resale. It is not meant to be a measure of electricity generation for the U.S. EEI survey data represent the majority of national distribution (large utilities, large government power projects, some independent and large municipal power projects). The remaining segment of the industry (smaller producers) is estimated. Non-utility generation is captured via direct sales to utilities.

* Excludes Alaska and Hawaii

** Less than one-tenth of one percent

SOURCE: Edison Electric Institute (EEI), *Weekly Electric Output Report*.

AMERICAN IRON AND STEEL INSTITUTE
 1140 Connecticut Avenue, Suite 705
 Washington, D.C. 20036

May 27, 2008

ESTIMATED WEEKLY RAW STEEL* PRODUCTION

<u>Period</u>	<u>Thousand Net Tons</u>	<u>Percent Change from Previous Period</u>	<u>Percent Capability Utilization**</u>	<u>Production by District</u>	
				<u>Week Ending May 24</u>	<u>Week Ending May 17</u>
<u>Week Ending</u>				North East Coast	182 181
				Pgh/Youngstown	212 214
				Lake Erie	84 86
				Detroit	93 106
				Indiana/Chicago	512 520
				Midwest	264 247
				Southern	695 698
				Western	98 94
				Total	2140 2146
<u>Year-to-Date+</u>					
May 24, 2008	2,140	-0.2	89.7		
May 24, 2007	2,121	0.8	88.4		
May 17, 2008	2,146	0.4	89.9		
May 24, 2008	43,876	3.1	88.8		
May 24, 2007	42,520	-	85.1		

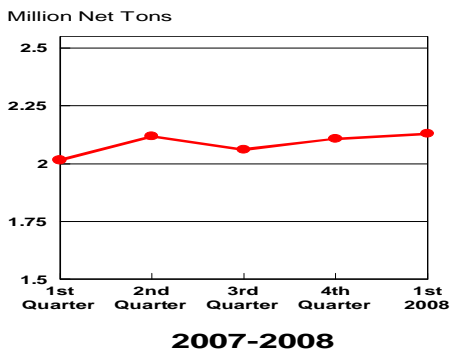
*Raw steel production tonnage included in this report is estimated based on a sampling of steel producers. Therefore, this report should be used primarily to assess production trends. The AISI production report "AIS 7," produced monthly and available by subscription, provides a more accurate summary of steel production based on data supplied by companies representing approximately 75% of U.S. production capacity.

+Includes revisions for previous months

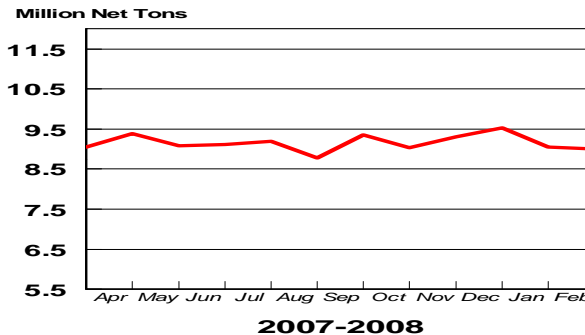
NOTE: Capability for the Fourth Quarter 2007 is approximately 31.3 million net tons vs 30.7 million net tons for the same period last year, and 30.1 million tons for the third quarter of 2007.

Capability -	2003 approx.	2.3 million tons/week
	2004	2.2
	2005	2.3
	2006	2.4
	2007	2.4

Average Weekly Raw Steel Production

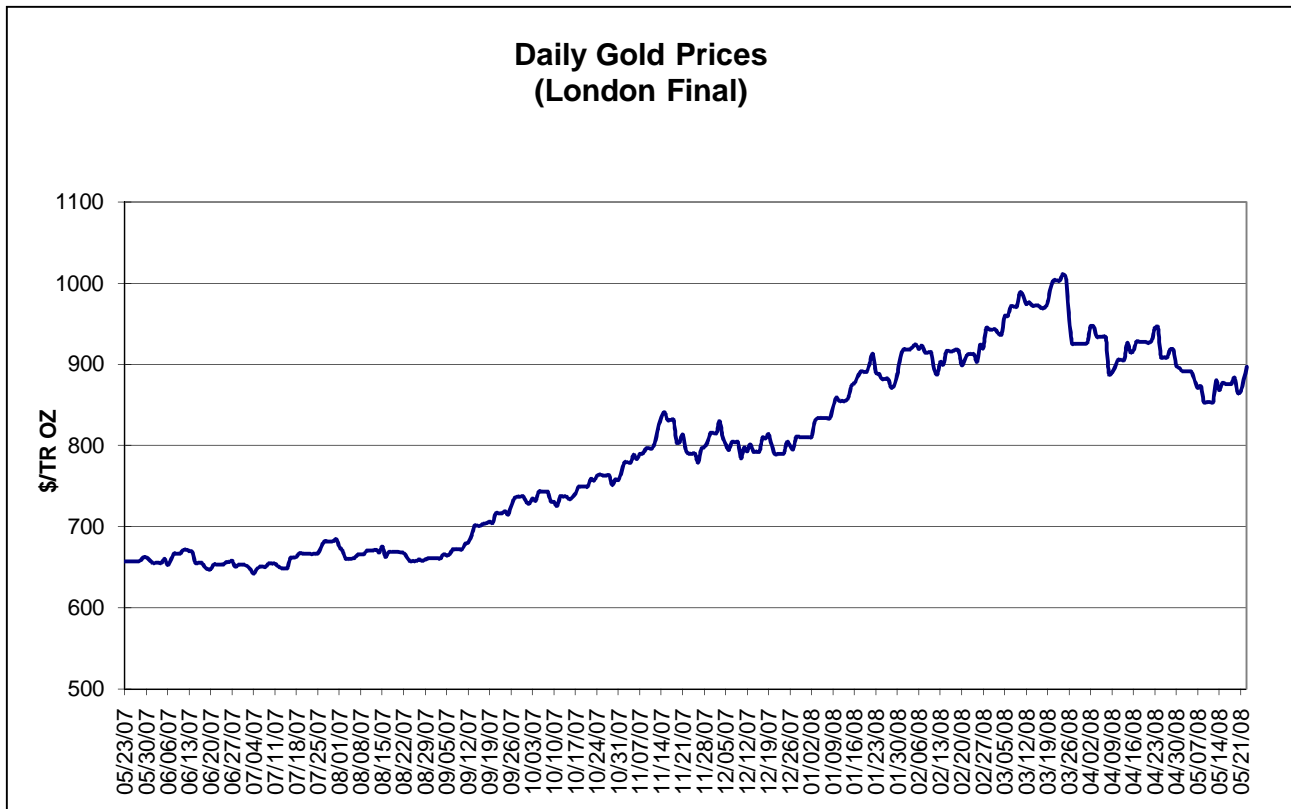
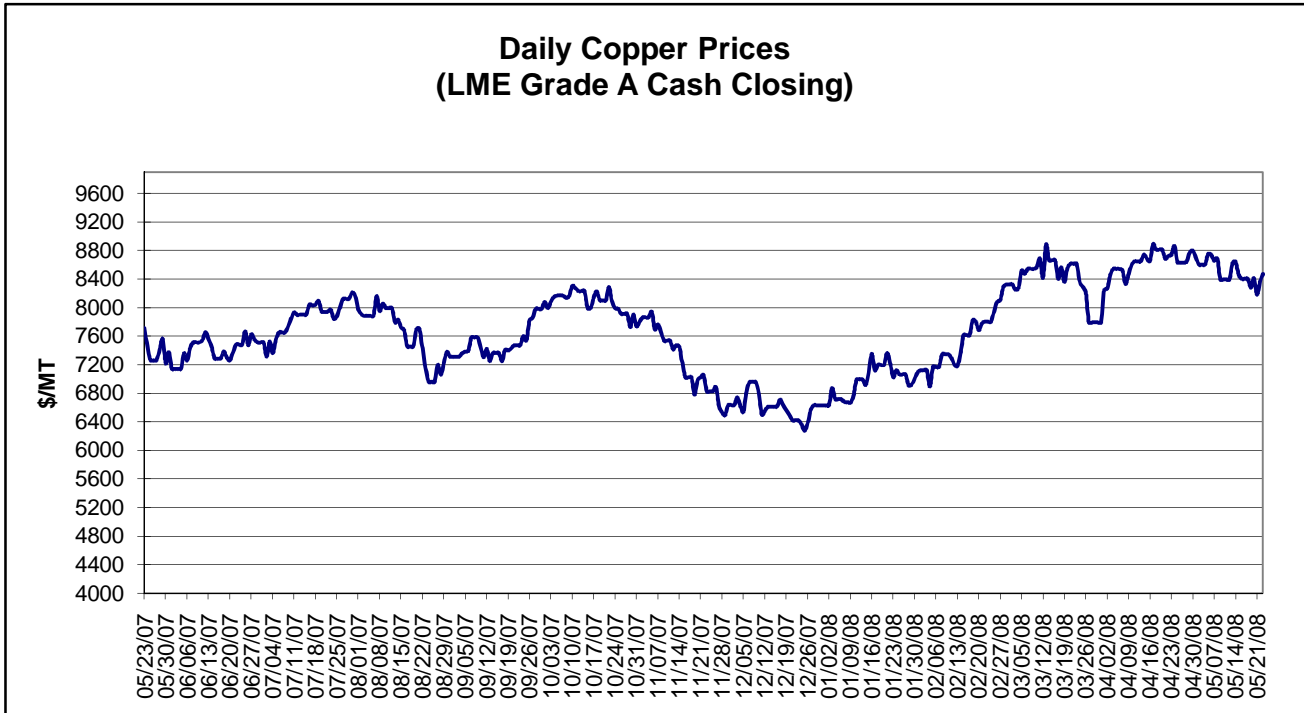


Monthly Raw Steel Production



*Steel in the first solid state after melting suitable for further processing or sale, including ingots, steel for castings and strand or pressure cast blooms, slabs, or other product forms.

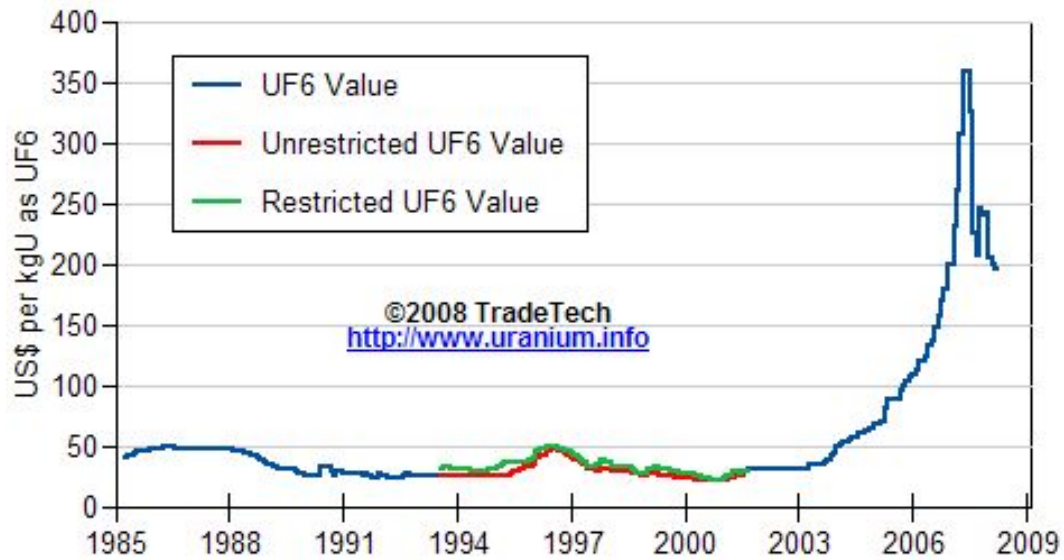
** Based on tonnage capability to produce raw steel for a sustained full order book.



Data reflect closings on weekends and holidays.

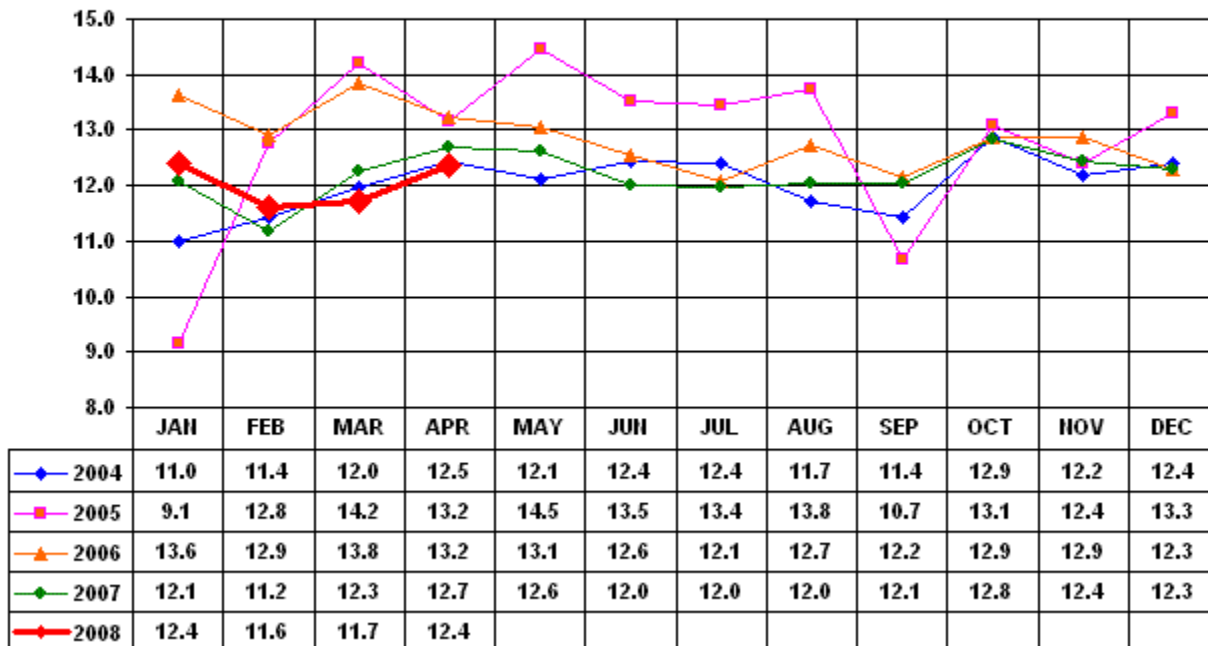
Source: Platts Metals Week

Trade Tech's Uranium (UF6) Monthly Spot Prices (US\$/kg as UF6)



Source: Trade Tech, Uranium Info Website – <http://www.uranium.info>

Coal and Coke Monthly Tonnage Indicator for Internal U.S. Waterways



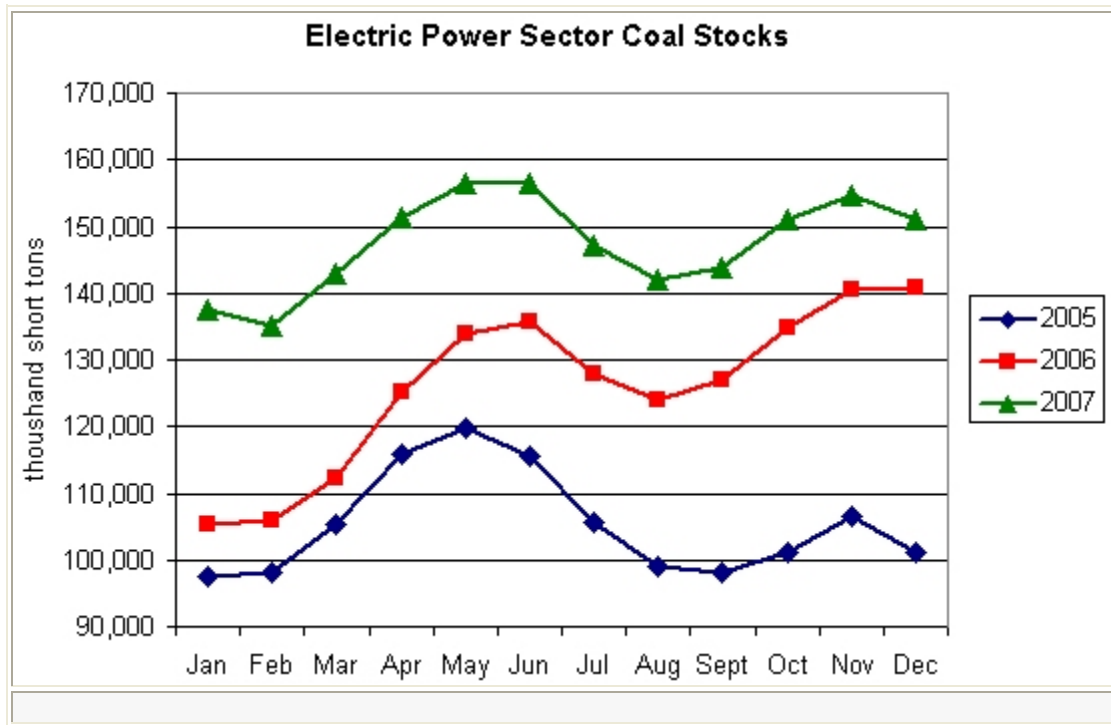
Source: U.S. Army Corps of Engineers, Waterborne Commerce Statistics Center

EIA Weekly Spot Coal Prices

The following average spot coal prices appear in the graphic below, for the previous and most recent weeks: (Dollars per Short Ton)

Week Ended	Central Appalachia 12,500 Btu, 1.2 SO ₂	Northern Appalachia 13,000 Btu, <3.0 SO ₂	Illinois Basin 11,800 Btu, 5.0 SO ₂	Powder River Basin 8,800 Btu, 0.8 SO ₂	Uinta Basin 11,700 Btu, 0.8 SO ₂
18-Apr-08	\$86.25	\$105.00	\$56.00	\$14.20	\$44.00
25-Apr-08	\$94.25	\$105.00	\$57.00	\$14.15	\$44.00
02-May-08	\$94.25	\$105.00	\$58.00	\$14.20	\$44.00
09-May-08	\$96.75	\$105.00	\$58.00	\$14.00	\$44.00
16-May-08	\$100.90	\$105.00	\$58.00	\$14.00	\$44.00
23-May-08	\$104.25	\$105.00	\$65.00	\$14.15	\$44.00

Source: Energy Information Administration (from Platts *Coal Outlook*, "Weekly Price Survey")



Source: Energy Information Administration