
National Mining Association

Weekly Statistical Summary

May 4, 2007 Edition
(Data for Week Ending April 28, 2007)

Prepared by
National Mining Association



Suite 500 East, 101 Constitution Avenue, NW
Washington, DC, 20001
Phone (202) 463-2600
Visit us at <http://www.nma.org>

NMA Weekly Statistical Summary

Vol. 45, No. 17
Dated 05/04/07

PRODUCTION, CONSUMPTION & TRADE						
	Week Ended			Cumulative Jan 1 to		
	04/28/07	04/29/06	% Chng	04/28/07	04/29/06	% Chng
EIA Coal Production (000 Tons):						
Week Ended/Year to Date	21,556	22,732	-5.2%	372,242	381,156	-2.3%
52 Weeks Ended	1,150,825	1,135,286	1.4%			
Month Ended -- March						
	March 07/06		% Chng	Jan - Mar 07/06		% Chng
	97,349	101,485	-4.1%	285,198	289,131	-1.4%
MONTH ENDED AND CUMULATIVE NUMBERS ARE PRELIMINARY AND SUBJECT TO CHANGE						
DOC Bituminous Coal Trade (000 Tons)						
Exports:	February 07/06			Jan - Feb 07/06		
			% Chng			% Chng
Metallurgical	1,874	1,987	-5.7%	3,950	4,168	-5.2%
Steam	775	648	19.6%	3,005	2,602	15.5%
Imports:	2,656	2,715	-2.2%	5,501	5,747	-4.3%
EEI Electric Output (Mil. Kwh)						
	Week Ended			Cumulative Jan 1 to		
	04/28/07	04/29/06	% Chng	04/28/07	04/29/06	% Chng
EEI Electric Output (Mil. Kwh)	69,254	68,651	0.9%	1,277,380	1,227,222	4.1%
AISI Raw Steel Output (000 Tons)	2,032	2,189	-7.2%	33,539	36,217	-7.4%
EIA U.S. PETROLEUM DATA						
4-Week Averages 000 Barrels per Day						
PETROLEUM SUPPLY:						
	Week Ending			Cumulative Daily Averages		
	04/27/07	04/27/06	% Chng	2007	2006	% Chng
Domestic Crude	5,130	5,063	1.3	5,213	5,043	3.4
Net Imports (Incl. SPR)	9,984	9,775	2.1	9,898	9,780	1.2
SPR Stocks W/D or Added	-25	-60	--	-6	-27	--
Other Stocks W/D or added	-105	-165	--	-215	-200	--
Natural Gas Liquids Prod.	2,300	2,243	2.5	2,365	2,078	13.8



NMA

THE AMERICAN RESOURCE

National Mining Association Web Site: [http:// www.nma.org](http://www.nma.org)

EIA Estimated Weekly U.S. Coal Production Overview (Thousand Short Tons)

Coal-Producing Region and State	Week Ended			Year To Date			52 Weeks Ended		
	4/28/2007	4/21/2007	4/29/2006	4/28/2007	4/28/2006	Percent Change	4/28/2007	4/29/2006	Percent Change
Alabama	378	371	362	6,873	6,991	-1.7	18,901	20,643	-8.4
Alaska	26	25	30	433	456	-4.9	1,403	1,248	12.4
Arizona	145	143	135	2,835	2,636	7.6	8,416	10,455	-19.5
Arkansas	1	1	*	8	4	108.7	27	6	360.7
Colorado	722	708	892	12,547	10,532	19.1	38,243	35,804	6.8
Illinois	609	597	603	10,374	10,640	-2.5	31,901	31,624	0.9
Indiana	671	658	685	11,443	11,755	-2.7	35,407	34,781	1.8
Kansas	9	8	6	116	87	33.3	455	210	117.1
Kentucky Total	2,185	2,143	2,340	37,552	41,421	-9.3	116,411	121,524	-4.2
Eastern	1,640	1,608	1,834	28,528	32,095	-11.1	89,467	94,561	-5.4
Western	545	535	506	9,023	9,327	-3.3	26,944	26,964	-0.1
Louisiana	19	19	93	866	1,082	-20.0	3,889	3,904	-0.4
Maryland	98	96	110	1,859	1,875	-0.8	5,037	5,312	-5.2
Mississippi	97	97	85	1,173	1,260	-6.9	3,702	3,650	1.4
Missouri	6	6	9	67	191	-64.8	271	603	-55.1
Montana	761	746	832	12,810	12,827	-0.1	41,706	40,417	3.2
New Mexico	475	466	574	8,119	8,201	-1.0	25,819	28,091	-8.1
North Dakota	496	487	517	9,323	9,970	-6.5	29,764	29,981	-0.7
Ohio	451	442	419	7,850	7,911	-0.8	22,647	24,500	-7.6
Oklahoma	38	37	39	658	729	-9.8	1,927	1,980	-2.7
Pennsylvania Total	1,156	1,134	1,369	19,851	22,528	-11.9	63,388	67,232	-5.7
Anthracite	26	25	27	441	516	-14.6	1,439	1,671	-13.9
Bituminous	1,130	1,109	1,341	19,410	22,012	-11.8	61,949	65,561	-5.5
Tennessee	53	52	55	919	984	-6.6	2,739	3,130	-12.5
Texas	867	851	893	14,507	14,398	0.8	45,541	45,890	-0.8
Utah	439	431	491	7,392	8,906	-17.0	24,492	25,412	-3.6
Virginia	543	533	563	9,551	10,211	-6.5	29,188	28,625	2.0
Washington	-	-	61	-	1,022	-100.0	1,558	4,545	-65.7
West Virginia Total	2,791	2,738	3,041	48,447	52,127	-7.1	148,094	154,762	-4.3
Northern	864	848	888	15,164	15,115	0.3	42,716	43,783	-2.4
Southern	1,927	1,890	2,153	33,283	37,012	-10.1	105,378	110,978	-5.0
Wyoming	8,522	8,813	8,528	146,668	142,416	3.0	449,900	410,958	9.5
Appalachian Total	7,110	6,974	7,752	123,879	134,720	-8.0	379,461	398,764	-4.8
Interior Total	2,861	2,808	2,920	48,236	49,472	-2.5	150,063	149,612	0.3
Western Total	11,586	11,818	12,060	200,127	196,964	1.6	621,302	586,910	5.9
East of Miss. River	9,032	8,862	9,632	155,893	167,702	-7.0	477,415	495,783	-3.7
West of Miss. River	12,524	12,739	13,100	216,349	213,454	1.4	673,411	639,503	5.3
Bituminous and Lignite	21,530	21,575	22,705	371,801	380,640	-2.3	1,149,386	1,133,615	1.4
Anthracite	26	25	27	441	516	-14.6	1,439	1,671	-13.9
U.S. Total	21,556	21,601	22,732	372,242	381,156	-2.3	1,150,825	1,135,286	1.4
Railroad Cars Loaded	139,911	138,990	139,244	2,389,595	2,408,478	-0.8	7,436,474	7,175,618	3.6

Source: Energy Information Administration



Volume 75 No. 17

OUTPUT FOR WEEK ENDED - Apr 28, 2007

May 02, 2007

The net available amount of electric energy distributed by the Total Electric Utility Industry+ for the week ended Saturday, **Apr 28, 2007** was **69,254** gigawatthours (GWh), according to the Edison Electric Institute. This is equivalent to **182** on the weekly electric output index.

WEEKLY ELECTRIC OUTPUT BY GEOGRAPHIC DIVISION
(48 CONTIGUOUS STATES)

	Week Ended April 28		52 Weeks Ended April 28	
	GWh Output	% Increase Over Corresponding Week of 2006	GWh Output	% Increase Over Corresponding Period of 2006
New England	2,273	1.3	133,275	-0.9
Mid-Atlantic	7,657	3.1	450,814	-0.4
Central Industrial	11,984	2.6	706,379	0.2
West Central	6,025	1.7	346,995	0.4
Southeast	18,969	-1.3	1,083,866	0.8
South Central	9,879	-6.3	605,929	2.0
Rocky Mountain	4,251	6.4	263,995	3.9
Pacific Northwest	2,806	7.6	154,093	2.9
Pacific Southwest	5,410	7.9	293,680	1.4
Total United States	69,254	0.9	4,039,026	1.0

WEEKLY ELECTRIC OUTPUT IN PREVIOUS WEEKS--GWh

Week Ended	2007	Week Ended	2006	% Inc. (07/06)	52 Weeks Ended	2007	% Inc. (07/06)
Apr 07	70,382	Apr 08	68,696	2.5	Apr 07	4,036,319	1.1
Apr 14	70,367	Apr 15	67,559	4.2	Apr 14	4,039,127	1.1
Apr 21	68,400	Apr 22	69,104	-1.0	Apr 21	4,038,423	1.0
Apr 28	69,254	Apr 29	68,651	0.9	Apr 28	4,039,026	1.0
Apr 28	1,277,380	Apr 29	1,227,222	4.1	YEAR TO DATE, FIRST 17 WEEKS		

WEEKLY ELECTRIC OUTPUT INDEX--TOTAL U.S.*
SEASONALLY ADJUSTED 1982 = 100

Week Ended	2007	Week Ended	2006	Week Ended	2005
Apr 07	183	Apr 08	178	Apr 09	172
Apr 14	186	Apr 15	177	Apr 16	170
Apr 21	180	Apr 22	180	Apr 23	174
Apr 28	182	Apr 29	179	Apr 30	173

* Excludes Alaska and Hawaii

+ Includes investor-owned companies, cooperatives and government-owned utilities.

Copyright © 2007 Edison Electric Institute. All rights reserved.

WEEKLY ELECTRIC OUTPUT BY GEOGRAPHIC DIVISION (48 CONTIGUOUS STATES)

	Week Ended			NMA CUMULATIVE JANUARY 1 to			52 Weeks Ended		
	28-Apr 2007 GWh Output	29-Apr 2006 GWh Output	% Increase Over Corresponding Week of 2006	28-Apr 2007 GWh Output	29-Apr 2006 GWh Output	% Increase Over Corresponding Week of 2006	28-Apr 2007 GWh Output	29-Apr 2006 GWh Output	% Increase Over Corresponding Week of 2006
New England	2,273	2,243	1.3%	43,767	42,315	3.4%	133,275	134,537	-0.9%
Mid-Atlantic	7,657	7,426	3.1%	145,719	138,654	5.1%	450,814	452,574	-0.4%
Central Industrial	11,984	11,678	2.6%	233,433	221,940	5.2%	706,379	704,915	0.2%
West Central	6,025	5,923	1.7%	110,450	107,603	2.6%	346,995	345,614	0.4%
Southeast	18,969	19,224	-1.3%	342,904	331,129	3.6%	1,083,866	1,075,179	0.8%
South Central	9,879	10,538	-6.3%	176,384	168,828	4.5%	605,929	594,013	2.0%
Rocky Mountain	4,251	3,996	6.4%	78,017	74,646	4.5%	263,995	254,018	3.9%
Pacific Northwest	2,806	2,609	7.6%	55,403	52,683	5.2%	154,093	149,819	2.9%
Pacific Southwest	<u>5,410</u>	<u>5,015</u>	7.9%	<u>91,302</u>	<u>89,426</u>	2.1%	<u>293,680</u>	<u>289,638</u>	1.4%
Total United States *	69,254	68,652	0.9%	1,277,379	1,227,224	4.1%	4,039,026	4,000,307	1.0%

Notes: EEI output data are an estimate of electricity load made available for distribution derived as weekly net generation + purchases from non-utilities + net imports - exports - sales for resale. It is not meant to be a measure of electricity generation for the U.S. EEI survey data represent the majority of national distribution (large utilities, large government power projects, some independent and large municipal power projects). The remaining segment of the industry (smaller producers) is estimated. Non-utility generation is captured via direct sales to utilities.

* Excludes Alaska and Hawaii

** Less than one-tenth of one percent

SOURCE: Edison Electric Institute (EEI), *Weekly Electric Output Report*.

AMERICAN IRON AND STEEL INSTITUTE
 1140 Connecticut Avenue, Suite 705
 Washington, D.C. 20036

April 30 2007

ESTIMATED WEEKLY RAW STEEL* PRODUCTION

<u>Period</u>	<u>Thousand Net Tons</u>	<u>Percent Change from Previous Period</u>	<u>Percent Capability Utilization**</u>	<u>Production by District</u>		
				<u>Week Ending</u>		
				<u>Apr 30</u>	<u>Apr 21</u>	
<u>Week Ending</u>				North East Coast	121	120
April 28, 2007	2,032	-0.5	84.9	Pgh/Youngstown	227	224
April 28, 2006	2,189	-7.1	91.4	Lake Erie	95	95
April 21, 2007	2,043	-2.1	85.4	Detroit	95	109
				Indiana/Chicago	518	522
				Midwest	244	239
				Southern	638	639
				Western	94	95
				Total	2032	2043
<u>Year-to-Date+</u>						
April 28, 2007	33,539	-7.3	83.9			
April 28, 2006	36,217	-	89.6			

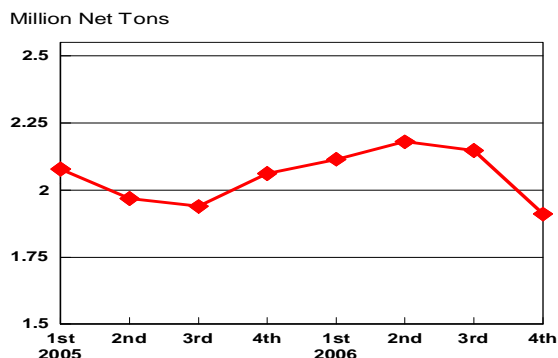
*Raw steel production tonnage included in this report is estimated based on a sampling of steel producers. Therefore, this report should be used primarily to assess production trends. The AISI production report "AIS 7," produced monthly and available by subscription, provides a more accurate summary of steel production based on data supplied by companies representing approximately 75% of U.S. production capacity.

+Includes revisions for previous months

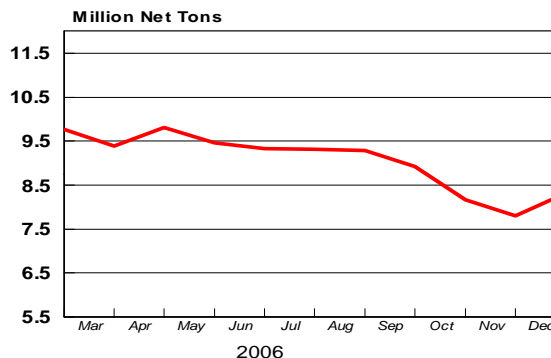
NOTE: Capability for the First Quarter 2007 is approximately 31.2 million net tons vs 30.5 million net tons for the same period last year, and 30.7 million tons for the fourth quarter of 2006.

Capability -	2003 approx.	2.3 million tons/week
	2004	2.2
	2005	2.3
	2006	2.4
	2007	2.4

Average Weekly Raw Steel Production

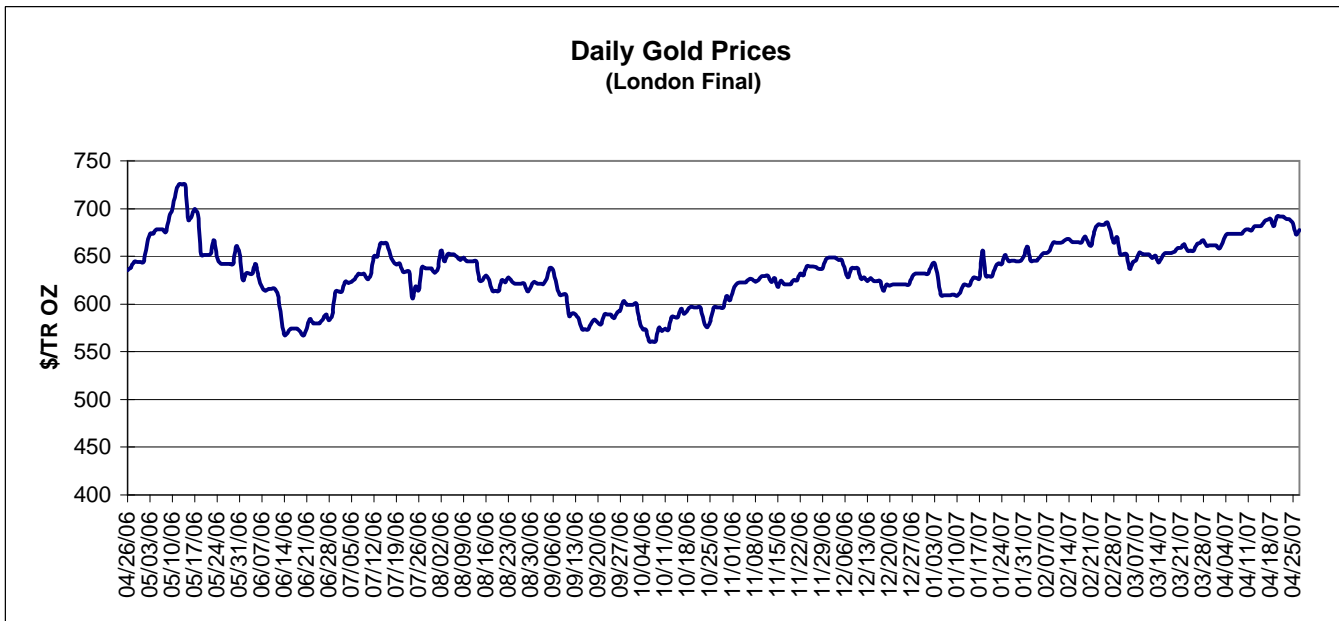
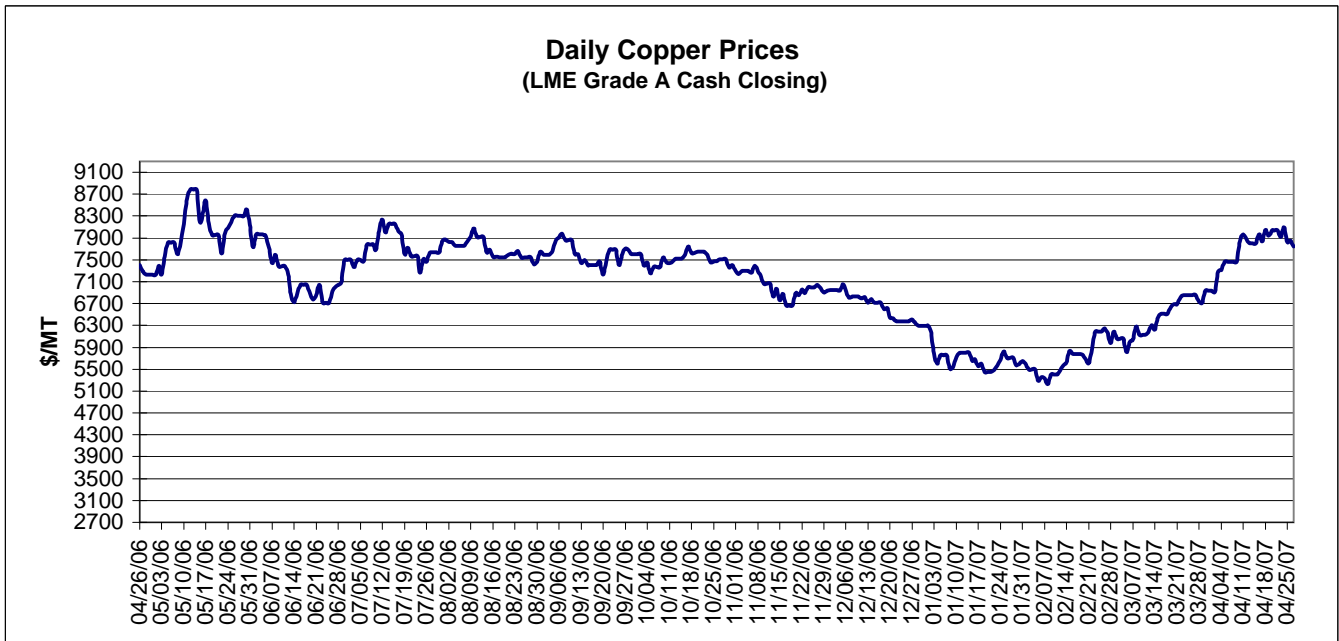


MONTHLY RAW STEEL PRODUCTION



*Steel in the first solid state after melting suitable for further processing or sale, including ingots, steel for castings and strand or pressure cast blooms, slabs, or other product forms.

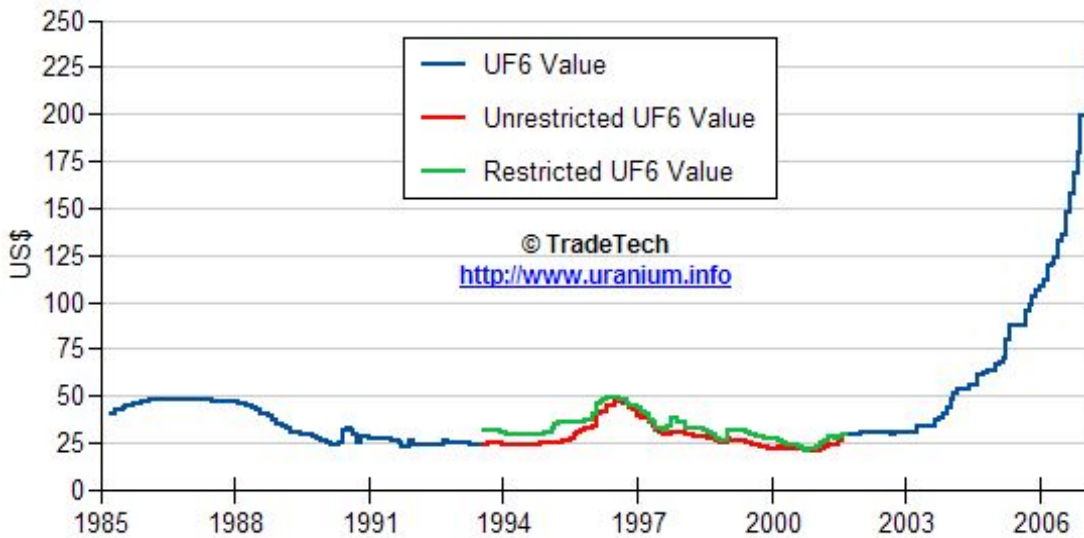
** Based on tonnage capability to produce raw steel for a sustained full order book.



Data reflect closings on weekends and holidays.

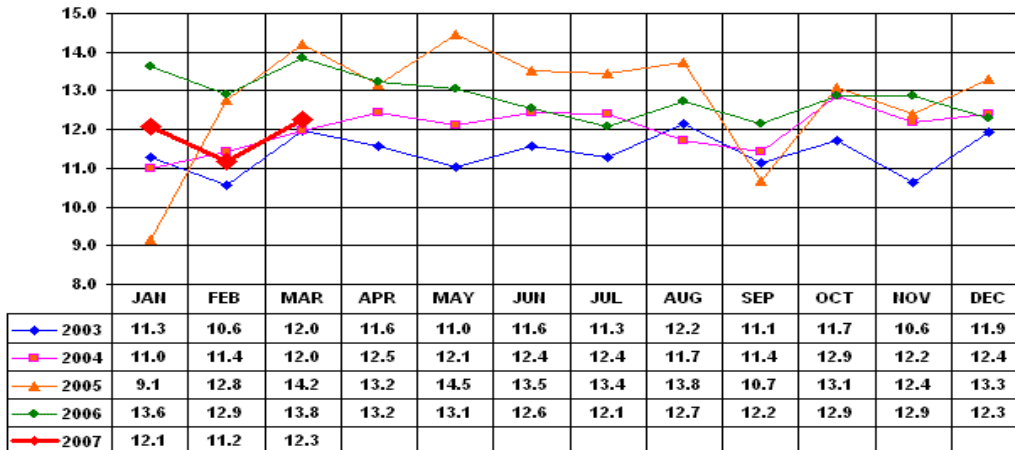
Source: Platts Metals Week

Trade Tech's Uranium (UF6) Monthly Spot Prices (US\$/kg as UF6)



Source: Trade Tech, Uranium Info Website – <http://www.uranium.info>

Coal and Coke Monthly Tonnage Indicator for Internal U.S. Waterways



Source: U.S. Army Corps of engineers, Waterborne Commerce Statistics Center