

---

National Mining Association

# Weekly Statistical Summary

May 9, 2008 Edition  
(Data for Week Ending May 3, 2008)

Prepared by  
National Mining Association



Suite 500 East, 101 Constitution Avenue, NW  
Washington, DC, 20001  
Phone (202) 463-2600  
Visit us at <http://www.nma.org>

# NMA Weekly Statistical Summary

Vol. 46, No. 18  
Dated 05/09/08

PRODUCTION, CONSUMPTION & TRADE						
	Week Ended			* Cumulative Jan 1 to		
	05/03/08	05/05/07	% Chng	05/03/08	05/03/07	% Chng
<b>EIA Coal Production (000 Tons):</b>						
Week Ended/Year to Date	22,553	21,577	4.5%	402,663	389,935	3.3%
52 Weeks Ended	1,153,000	1,152,447	0.0%			
* Due to leap year, 2008 cumulative reflects one extra day of tonnage.						
	April 08/07		% Chng	Jan - Apr 08/07		% Chng
<b>Month Ended -- April</b>	98,009	93,048	5.3%	393,309	378,948	3.8%
MONTH ENDED AND CUMULATIVE NUMBERS ARE PRELIMINARY AND SUBJECT TO CHANGE						
<b>DOC Bituminous Coal Trade (000 Tons)</b>						
	February 08/07		% Chng	Jan - Feb 08/07		% Chng
<b>Exports:</b>						
Metallurgical	2,682	1,874	43.1%	5,356	3,950	35.6%
Steam	1,477	775	90.6%	3,699	3,005	23.1%
<b>Imports:</b>	2,619	2,656	-1.4%	5,000	5,501	-9.1%
	Week Ended			* Cumulative Jan 1 to		
	05/03/08	05/05/07	% Chng	05/03/08	05/05/07	% Chng
<b>EEl Electric Output (Mil. Kwh)</b>	69,554	70,567	-1.4%	1,359,382	1,347,947	0.8%
<b>AISI Raw Steel Output (000 Tons)</b>	2,098	2,117	-0.9%	37,454	36,157	3.6%
<b>EIA U.S. PETROLEUM DATA</b>						
4-Week Averages 000 Barrels per Day						
	Week Ending			Cumulative Daily Averages		
	05/02/08	05/02/07	% Chng	2008	2007	% Chng
<b>PETROLEUM SUPPLY:</b>						
Domestic Crude	5,099	5,219	-2.3	5,100	5,186	-1.7
Net Imports (Incl. SPR)	9,915	10,165	-2.5	9,759	9,939	-1.8
SPR Stocks W/D or Added	-35	-26	--	-37	-7	--
Other Stocks W/D or added	-342	-192	--	-286	-211	--
Natural Gas Liquids Prod.	2,448	2,399	2.0	2,312	2,327	-0.6



**NMA**

THE AMERICAN RESOURCE National Mining Association Web Site: [http:// www.nma.org](http://www.nma.org)

## EIA Estimated Weekly U.S. Coal Production Overview (Thousand Short Tons)

Coal-Producing Region and State	Week Ended			Year to Date		Percent Change	52 Weeks Ended		Percent Change
	5/3/2008	4/26/2008	5/5/2007	5/3/2008	5/3/2007		5/3/2008	5/5/2007	
Alabama	401	393	346	6,948	6,871	1.1	19,522	18,601	5.0
Alaska	28	28	26	451	579	-22.1	1,191	1,522	-21.8
Arizona	120	117	152	2,156	2,776	-22.3	7,332	8,248	-11.1
Arkansas	2	2	1	35	24	44.8	93	43	117.1
Colorado	754	740	760	12,730	11,612	9.6	37,302	36,598	1.9
Illinois	681	668	662	12,008	12,839	-6.5	31,556	34,437	-8.4
Indiana	728	714	653	12,719	11,886	7.0	35,693	34,912	2.2
Kansas	11	11	9	179	149	20.1	449	483	-7.2
<b>Kentucky Total</b>	<b>2,439</b>	<b>2,393</b>	<b>2,183</b>	<b>41,288</b>	<b>40,478</b>	<b>2.0</b>	<b>115,563</b>	<b>117,970</b>	<b>-2.0</b>
Eastern	1,773	1,740	1,680	30,123	30,522	-1.3	86,223	90,495	-4.7
Western	666	653	503	11,165	9,956	12.1	29,340	27,475	6.8
Louisiana	19	19	14	1,394	769	81.3	3,684	3,698	-0.4
Maryland	53	52	41	782	797	-1.9	2,271	3,872	-41.3
Mississippi	82	59	58	1,135	1,237	-8.2	3,428	3,752	-8.6
Missouri	5	5	4	82	80	2.1	237	275	-13.9
Montana	918	901	748	15,204	13,625	11.6	44,765	41,877	6.9
New Mexico	496	487	561	8,325	8,214	1.3	24,442	25,447	-3.9
North Dakota	567	556	510	10,207	10,227	-0.2	29,483	30,243	-2.5
Ohio	499	490	386	8,421	7,485	12.5	23,409	21,939	6.7
Oklahoma	39	38	32	667	570	16.9	1,738	1,806	-3.8
<b>Pennsylvania Total</b>	<b>1,362</b>	<b>1,336</b>	<b>1,251</b>	<b>23,276</b>	<b>23,598</b>	<b>-1.4</b>	<b>64,607</b>	<b>66,072</b>	<b>-2.2</b>
Anthracite	41	41	29	646	546	18.3	1,651	1,538	7.3
Bituminous	1,320	1,295	1,222	22,629	23,052	-1.8	62,956	64,533	-2.4
Tennessee	53	52	47	874	940	-7.0	2,569	2,714	-5.3
Texas	886	869	768	14,756	13,546	8.9	42,945	43,882	-2.1
Utah	500	491	478	8,180	8,414	-2.8	23,970	25,116	-4.6
Virginia	489	479	533	8,857	9,862	-10.2	24,261	29,046	-16.5
Washington	--	--	--	--	--	--	0	1,496	-100.0
<b>West Virginia Total</b>	<b>3,212</b>	<b>3,150</b>	<b>2,906</b>	<b>54,604</b>	<b>54,077</b>	<b>1.0</b>	<b>153,155</b>	<b>151,748</b>	<b>0.9</b>
Northern	977	958	796	17,018	15,619	9.0	43,189	42,144	2.5
Southern	2,235	2,192	2,110	37,586	38,458	-2.3	109,966	109,604	0.3
Wyoming	8,210	8,613	8,449	157,387	149,279	5.4	459,336	446,651	2.8
<b>Appalachian Total</b>	<b>7,841</b>	<b>7,692</b>	<b>7,190</b>	<b>133,885</b>	<b>134,152</b>	<b>-0.2</b>	<b>376,017</b>	<b>384,485</b>	<b>-2.2</b>
<b>Interior Total</b>	<b>3,118</b>	<b>3,037</b>	<b>2,703</b>	<b>54,139</b>	<b>51,056</b>	<b>6.0</b>	<b>149,161</b>	<b>150,764</b>	<b>-1.1</b>
<b>Western Total</b>	<b>11,593</b>	<b>11,932</b>	<b>11,683</b>	<b>214,639</b>	<b>204,727</b>	<b>4.8</b>	<b>627,821</b>	<b>617,199</b>	<b>1.7</b>
<b>East of Miss. River</b>	<b>9,998</b>	<b>9,786</b>	<b>9,065</b>	<b>170,912</b>	<b>170,070</b>	<b>0.5</b>	<b>476,034</b>	<b>485,062</b>	<b>-1.9</b>
<b>West of Miss. River</b>	<b>12,555</b>	<b>12,875</b>	<b>12,512</b>	<b>231,750</b>	<b>219,865</b>	<b>5.4</b>	<b>676,966</b>	<b>667,386</b>	<b>1.4</b>
<b>Bituminous and Lignite</b>	<b>22,512</b>	<b>22,620</b>	<b>21,548</b>	<b>402,016</b>	<b>389,389</b>	<b>3.2</b>	<b>1,151,348</b>	<b>1,150,909</b>	<b>*</b>
<b>Anthracite</b>	<b>41</b>	<b>41</b>	<b>29</b>	<b>646</b>	<b>546</b>	<b>18.3</b>	<b>1,651</b>	<b>1,538</b>	<b>7.3</b>
<b>U.S. Total</b>	<b>22,553</b>	<b>22,661</b>	<b>21,577</b>	<b>402,663</b>	<b>389,935</b>	<b>3.3</b>	<b>1,153,000</b>	<b>1,152,447</b>	<b>*</b>
Railroad Cars Loaded	148,211	149,941	138,582	2,638,539	2,528,177	4.4	7,514,394	7,427,809	1.2

Source: Energy Information Administration

## EIA Estimated Weekly and Monthly U.S. Coal Production Overview (Thousand Short Tons)

Coal-Producing Region and State	Week Ended		Year to Date		Month Ended		January - April		Percent Change
	5/3/2008	5/5/2007	5/3/2008	5/3/2007	April 2008	April 2007	2008	2007	
Alabama	401	346	6,948	6,871	1,714	1,467	6,787	6,666	1.8
Alaska	28	26	451	579	121	109	440	564	-21.9
Arizona	120	152	2,156	2,776	513	644	2,108	2,685	-21.5
Arkansas	2	1	35	24	7	6	34	23	47.2
Colorado	754	760	12,730	11,612	3,166	3,264	12,413	11,253	10.3
Illinois	681	662	12,008	12,839	2,894	2,817	11,730	12,475	-6.0
Indiana	728	653	12,719	11,886	3,098	2,775	12,423	11,520	7.8
Kansas	11	9	179	149	47	37	174	143	21.3
<b>Kentucky Total</b>	<b>2,439</b>	<b>2,183</b>	<b>41,288</b>	<b>40,478</b>	<b>10,395</b>	<b>9,267</b>	<b>40,300</b>	<b>39,228</b>	<b>2.7</b>
Eastern	1,773	1,680	30,123	30,522	7,569	7,127	29,408	29,546	-0.5
Western	666	503	11,165	9,956	2,826	2,141	10,893	9,682	12.5
Louisiana	19	14	1,394	769	225	58	1,386	762	81.8
Maryland	53	41	782	797	225	173	761	773	-1.6
Mississippi	82	58	1,135	1,237	340	335	1,101	1,209	-9.0
Missouri	5	4	82	80	23	18	80	78	2.8
Montana	918	748	15,204	13,625	3,846	3,221	14,815	13,284	11.5
New Mexico	496	561	8,325	8,214	2,116	2,379	8,124	7,891	3.0
North Dakota	567	510	10,207	10,227	2,426	2,158	9,980	9,922	0.6
Ohio	499	386	8,421	7,485	2,123	1,641	8,218	7,270	13.0
Oklahoma	39	32	667	570	165	135	651	551	18.1
<b>Pennsylvania Total</b>	<b>1,362</b>	<b>1,251</b>	<b>23,276</b>	<b>23,598</b>	<b>5,811</b>	<b>5,308</b>	<b>22,727</b>	<b>22,872</b>	<b>-0.6</b>
Anthracite	41	29	646	546	177	124	630	529	19.1
Bituminous	1,320	1,222	22,629	23,052	5,635	5,183	22,097	22,343	-1.1
Tennessee	53	47	874	940	229	198	853	912	-6.5
Texas	886	768	14,756	13,546	3,702	3,312	14,379	13,204	8.9
Utah	500	478	8,180	8,414	2,132	2,030	7,977	8,141	-2.0
Virginia	489	533	8,857	9,862	2,078	2,269	8,658	9,564	-9.5
Washington	--	--	--	--	--	--	--	--	--
<b>West Virginia Total</b>	<b>3,212</b>	<b>2,906</b>	<b>54,604</b>	<b>54,077</b>	<b>13,666</b>	<b>12,357</b>	<b>53,299</b>	<b>52,448</b>	<b>1.6</b>
Northern	977	796	17,018	15,619	4,159	3,383	16,622	15,169	9.6
Southern	2,235	2,110	37,586	38,458	9,506	8,974	36,677	37,280	-1.6
Wyoming	8,210	8,449	157,387	149,279	36,948	37,068	153,892	145,510	5.8
<b>Appalachian Total</b>	<b>7,841</b>	<b>7,190</b>	<b>133,885</b>	<b>134,152</b>	<b>33,415</b>	<b>30,540</b>	<b>130,709</b>	<b>130,051</b>	<b>0.5</b>
<b>Interior Total</b>	<b>3,118</b>	<b>2,703</b>	<b>54,139</b>	<b>51,056</b>	<b>13,328</b>	<b>11,634</b>	<b>52,850</b>	<b>49,648</b>	<b>6.4</b>
<b>Western Total</b>	<b>11,593</b>	<b>11,683</b>	<b>214,639</b>	<b>204,727</b>	<b>51,266</b>	<b>50,874</b>	<b>209,749</b>	<b>199,249</b>	<b>5.3</b>
<b>East of Miss. River</b>	<b>9,998</b>	<b>9,065</b>	<b>170,912</b>	<b>170,070</b>	<b>42,573</b>	<b>38,608</b>	<b>166,856</b>	<b>164,937</b>	<b>1.2</b>
<b>West of Miss. River</b>	<b>12,555</b>	<b>12,512</b>	<b>231,750</b>	<b>219,865</b>	<b>55,436</b>	<b>54,440</b>	<b>226,452</b>	<b>214,011</b>	<b>5.8</b>
Bituminous and Lignite	22,512	21,548	402,016	389,389	97,832	92,923	392,679	378,419	3.8
Anthracite	41	29	646	546	177	124	630	529	19.1
<b>U.S. Total</b>	<b>22,553</b>	<b>21,577</b>	<b>402,663</b>	<b>389,935</b>	<b>98,009</b>	<b>93,048</b>	<b>393,309</b>	<b>378,948</b>	<b>3.8</b>
Railroad Cars Loaded	148,211	138,582	2,638,539	2,528,177	--	--	--	--	--

Source: Energy Information Administration



Volume 76 No. 18

**OUTPUT FOR WEEK ENDED - May 03, 2008**

May 07, 2008

The net available amount of electric energy distributed by the Total Electric Utility Industry+ for the week ended Saturday, **May 03, 2008** was **69,554** gigawatthours (GWh), according to the Edison Electric Institute. This is equivalent to **180** on the weekly electric output index.

**WEEKLY ELECTRIC OUTPUT BY GEOGRAPHIC DIVISION**  
(48 CONTIGUOUS STATES)

	Week Ended May 03		52 Weeks Ended May 03	
	GWh Output	% Increase Over Corresponding Week of 2007	GWh Output	% Increase Over Corresponding Period of 2007
New England	2,263	0.7	133,476	0.2
Mid-Atlantic	7,612	1.1	456,169	1.2
Central Industrial	12,043	-0.1	724,139	2.5
West Central	5,919	-1.0	354,440	2.1
Southeast	18,504	-5.4	1,108,979	2.2
South Central	10,299	-3.1	599,955	-0.9
Rocky Mountain	4,531	-1.0	279,857	6.0
Pacific Northwest	2,967	9.1	165,221	7.1
Pacific Southwest	5,416	2.9	289,811	-1.4
Total United States	69,554	-1.4	4,112,047	1.8

**WEEKLY ELECTRIC OUTPUT IN PREVIOUS WEEKS--GWh**

Week Ended	2008	Week Ended	2007	% Inc. (08/07)	52 Weeks Ended	2008	% Inc. (08/07)
Apr 12	70,761	Apr 14	70,367	0.6	Apr 12	4,111,181	1.8
Apr 19	68,770	Apr 21	68,400	0.5	Apr 19	4,111,551	1.8
Apr 26	70,763	Apr 28	69,254	2.2	Apr 26	4,113,060	1.8
May 03	69,554	May 05	70,567	-1.4	May 03	4,112,047	1.8
May 03	1,359,382	May 05	1,347,947	0.8	YEAR TO DATE, FIRST 18 WEEKS		

**WEEKLY ELECTRIC OUTPUT INDEX--TOTAL U.S.\***  
**SEASONALLY ADJUSTED 1982 = 100**

Week Ended	2008	Week Ended	2007	Week Ended	2006
Apr 12	188	Apr 14	186	Apr 15	177
Apr 19	181	Apr 21	180	Apr 22	180
Apr 26	185	Apr 28	182	Apr 29	179
May 03	180	May 05	183	May 06	177

\* Excludes Alaska and Hawaii.

+ Includes investor-owned companies, cooperatives and government-owned utilities.

Copyright © 2008 Edison Electric Institute. All rights reserved.

## WEEKLY ELECTRIC OUTPUT BY GEOGRAPHIC DIVISION (48 CONTIGUOUS STATES)

	Week Ended			NMA CUMULATIVE JANUARY WEEK ONE TO			52 Weeks Ended		
	3-May 2008 GWh Output	5-May 2007 GWh Output	% Increase Over Corresponding Week of 2007	3-May 2008 GWh Output	5-May 2007 GWh Output	% Increase Over Corresponding Week of 2007	3-May 2008 GWh Output	5-May 2007 GWh Output	% Increase Over Corresponding Week of 2007
<b>New England</b>	2,263	2,248	0.7%	<b>45,045</b>	<b>46,015</b>	<b>-2.1%</b>	133,476	133,216	0.2%
<b>Mid-Atlantic</b>	7,612	7,533	1.0%	<b>150,752</b>	<b>153,252</b>	<b>-1.6%</b>	456,169	450,794	1.2%
<b>Central Industrial</b>	12,043	12,058	-0.1%	<b>247,491</b>	<b>245,491</b>	<b>0.8%</b>	724,139	706,803	2.5%
<b>West Central</b>	5,919	5,980	-1.0%	<b>118,653</b>	<b>116,430</b>	<b>1.9%</b>	354,440	347,100	2.1%
<b>Southeast</b>	18,504	19,555	-5.4%	<b>364,778</b>	<b>362,459</b>	<b>0.6%</b>	1,108,979	1,085,240	2.2%
<b>South Central</b>	10,299	10,631	-3.1%	<b>188,837</b>	<b>187,015</b>	<b>1.0%</b>	599,955	605,316	-0.9%
<b>Rocky Mountain</b>	4,531	4,577	-1.0%	<b>85,022</b>	<b>82,594</b>	<b>2.9%</b>	279,857	264,104	6.0%
<b>Pacific Northwest</b>	2,967	2,720	9.1%	<b>64,265</b>	<b>58,123</b>	<b>10.6%</b>	165,221	154,210	7.1%
<b>Pacific Southwest</b>	5,416	5,265	2.9%	<b>94,539</b>	<b>96,567</b>	<b>-2.1%</b>	289,811	293,939	-1.4%
<b>Total United States *</b>	69,554	70,567	-1.4%	<b>1,359,382</b>	<b>1,347,946</b>	<b>0.8%</b>	4,112,047	4,040,722	1.8%

**Notes:** EEl output data are an estimate of electricity load made available for distribution derived as weekly net generation + purchases from non-utilities + net imports - exports - sales for resale. It is not meant to be a measure of electricity generation for the U.S. EEl survey data represent the majority of national distribution (large utilities, large government power projects, some independent and large municipal power projects). The remaining segment of the industry (smaller producers) is estimated. Non-utility generation is captured via direct sales to utilities.

\* Excludes Alaska and Hawaii

\*\* Less than one-tenth of one percent

SOURCE: Edison Electric Institute (EEl), *Weekly Electric Output Report*.

AMERICAN IRON AND STEEL INSTITUTE  
 1140 Connecticut Avenue, Suite 705  
 Washington, D.C. 20036

May 5, 2008

**ESTIMATED WEEKLY RAW STEEL\* PRODUCTION**

<u>Period</u>	Thousand <u>Net Tons</u>	Percent Change from Previous <u>Period</u>	Percent Capability <u>Utilization**</u>	<u>Production by District</u>	
				<u>Week Ending</u>	
				<u>May 3</u>	<u>April 26</u>
<b><u>Week Ending</u></b>					
May 3, 2008	2,098	-0.9	88.0	174	176
May 3, 2007	2,117	-0.8	88.4	216	214
April 26, 2008	2,118	-1.6	88.8	91	95
				115	117
				520	523
				240	252
				646	644
				<u>96</u>	<u>97</u>
				Total	2098
					2118
<b><u>Year-to-Date+</u></b>					
May 3, 2008	37,454	3.5	88.6		
May 3, 2007	36,157	-	85.1		

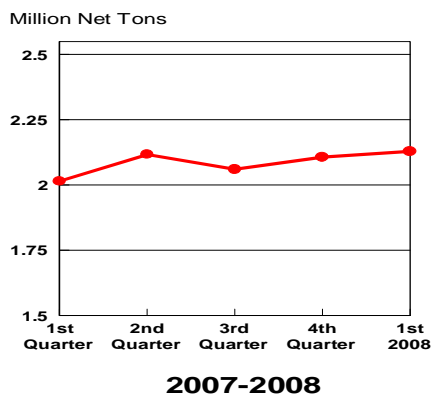
\*Raw steel production tonnage included in this report is estimated based on a sampling of steel producers. Therefore, this report should be used primarily to assess production trends. The AISI production report "AIS 7," produced monthly and available by subscription, provides a more accurate summary of steel production based on data supplied by companies representing approximately 75% of U.S. production capacity.

+Includes revisions for previous months

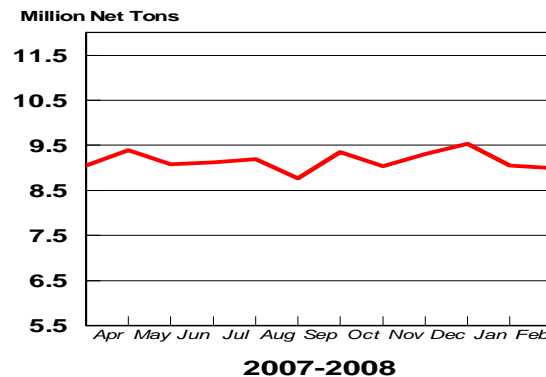
NOTE: Capability for the Fourth Quarter 2007 is approximately 31.3 million net tons vs 30.7 million net tons for the same period last year, and 30.1 million tons for the third quarter of 2007.

Capability -	2003 approx.	2.3 million tons/week
	2004	2.2
	2005	2.3
	2006	2.4
	2007	2.4

**Average Weekly Raw Steel Production**

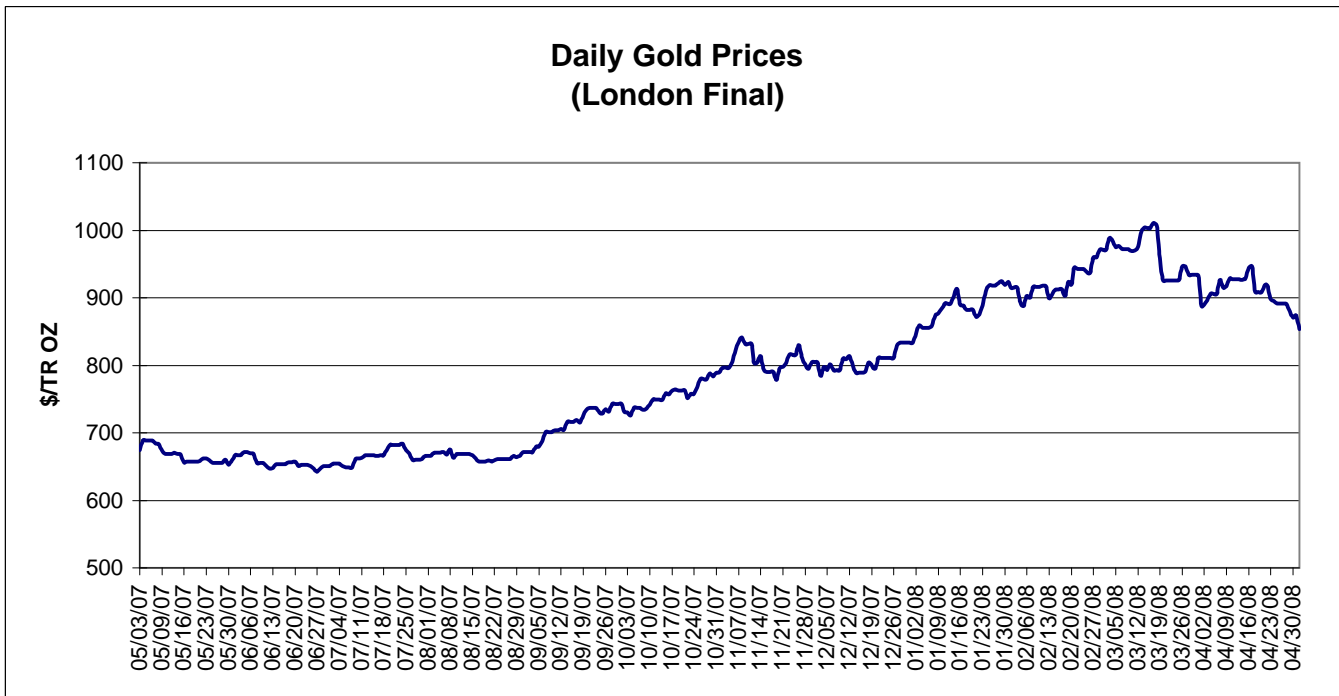
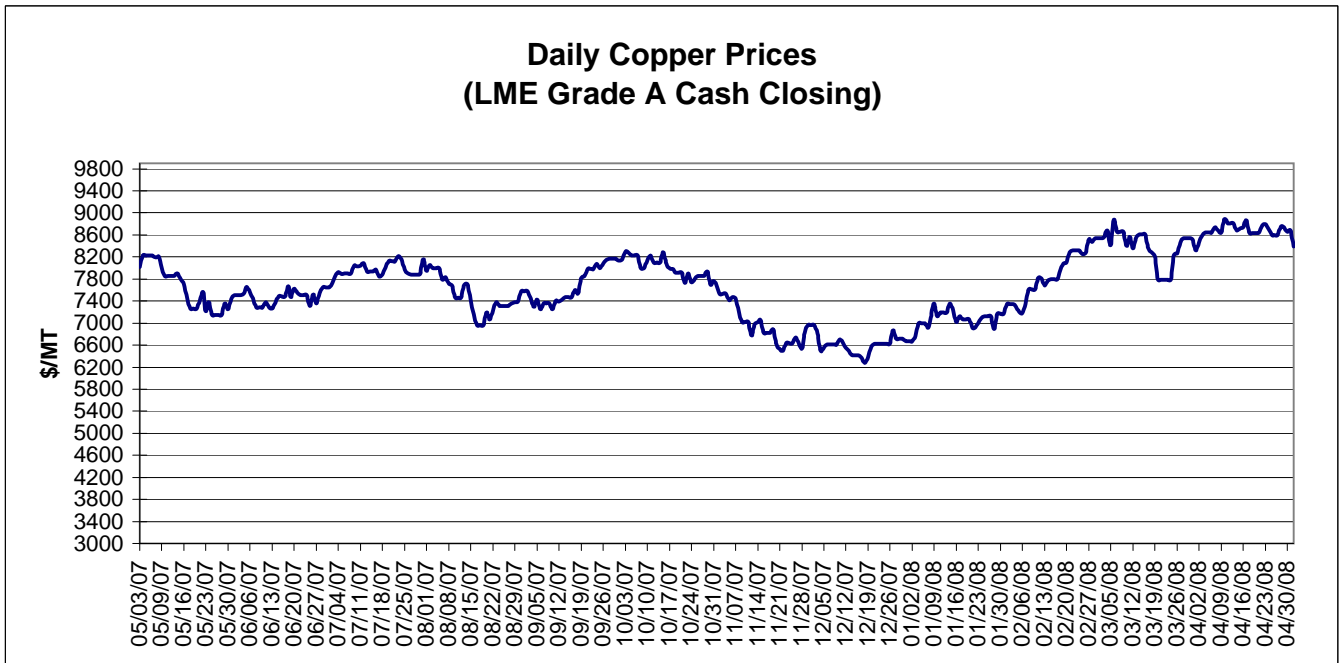


**Monthly Raw Steel Production**



\*Steel in the first solid state after melting suitable for further processing or sale, including ingots, steel for castings and strand or pressure cast blooms, slabs, or other product forms.

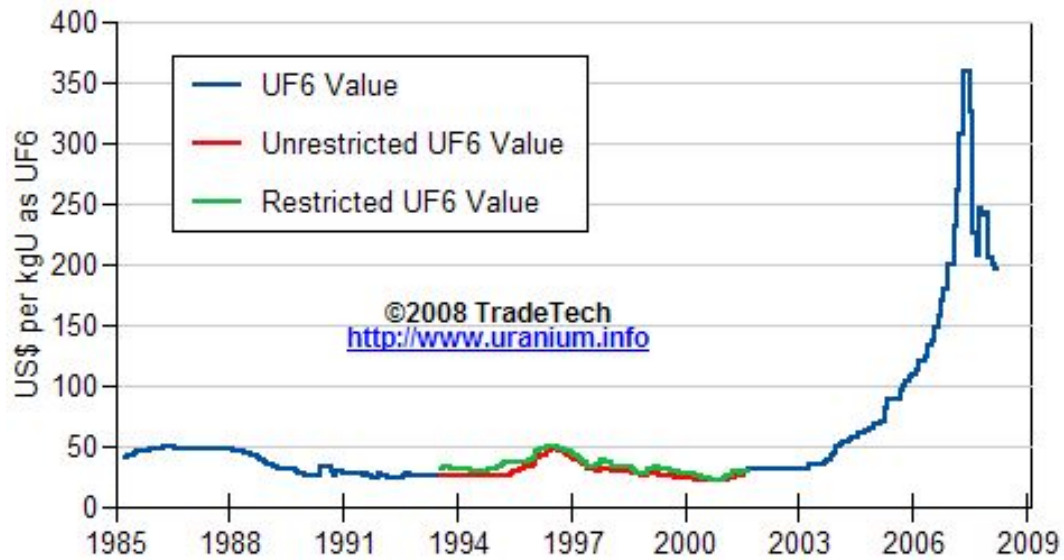
\*\* Based on tonnage capability to produce raw steel for a sustained full order book.



Data reflect closings on weekends and holidays.

Source: Platts Metals Week

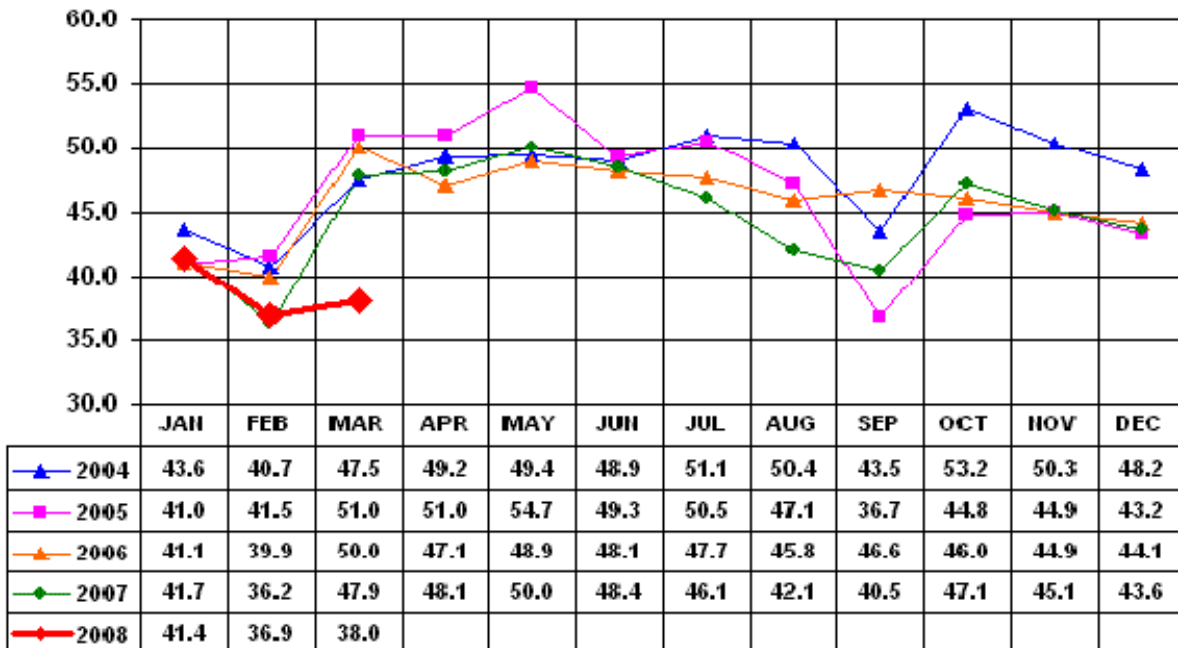
### Trade Tech's Uranium (UF6) Monthly Spot Prices (US\$/kg as UF6)



Source: Trade Tech, Uranium Info Website – <http://www.uranium.info>

### All Commodities

#### Monthly Tonnage Indicator for Internal U.S. Waterways



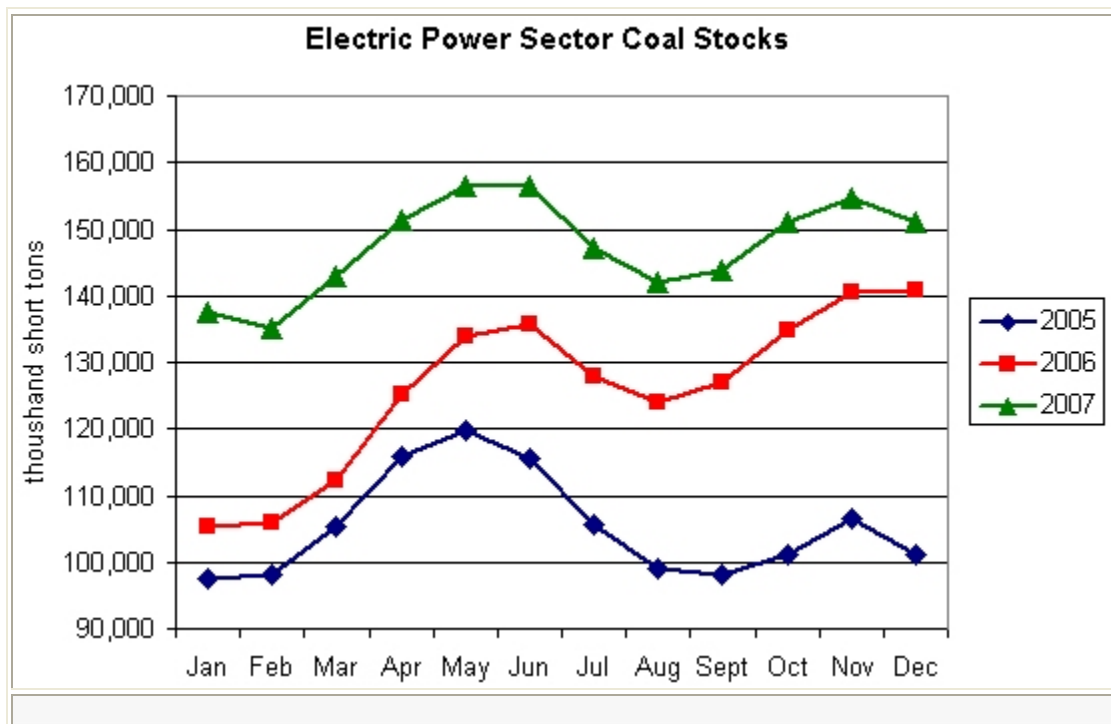
Source: U.S. Army Corps of engineers, Waterborne Commerce Statistics Center

### EIA Weekly Spot Coal Prices

The following average spot coal prices appear in the graphic below, for the previous and most recent weeks:  
(Dollars per Short Ton)

Week Ended	Central Appalachia 12,500 Btu, 1.2 SO2	Northern Appalachia 13,000 Btu, <3.0 SO2	Illinois Basin 11,800 Btu, 5.0 SO2	Powder River Basin 8,800 Btu, 0.8 SO2	Uinta Basin 11,700 Btu, 0.8 SO2
28-Mar-08	\$85.80	\$110.00	\$52.00	\$14.55	\$40.00
04-Apr-08	\$86.25	\$100.00	\$52.00	\$14.25	\$44.00
11-Apr-08	\$86.25	\$100.00	\$56.00	\$14.20	\$44.00
18-Apr-08	\$86.25	\$105.00	\$56.00	\$14.20	\$44.00
25-Apr-08	\$94.25	\$105.00	\$57.00	\$14.15	\$44.00
02-May-08	\$94.25	\$105.00	\$58.00	\$14.20	\$44.00

Source: Energy Information Administration (from Platts *Coal Outlook*, "Weekly Price Survey")



Source: Energy Information Administration