

---

National Mining Association

# Weekly Statistical Summary

June 1, 2007 Edition  
(Data for Week Ending May 26, 2007)

Prepared by  
National Mining Association



Suite 500 East, 101 Constitution Avenue, NW  
Washington, DC, 20001  
Phone (202) 463-2600  
Visit us at <http://www.nma.org>

# NMA Weekly Statistical Summary

Vol. 45, No. 21  
Dated 06/01/07

PRODUCTION, CONSUMPTION & TRADE						
	Week Ended			Cumulative Jan 1 to		
	05/26/07	05/27/06	% Chng	05/26/07	05/27/06	% Chng
<b>EIA Coal Production (000 Tons):</b>						
Week Ended/Year to Date	21,908	22,166	-1.2%	458,422	471,184	-2.7%
52 Weeks Ended	1,147,011	1,142,241	0.4%			
<b>Month Ended -- April</b>						
	April 07/06		% Chng	Jan - Apr 07/06		% Chng
	92,304	95,399	-3.2%	377,502	384,530	-1.8%
MONTH ENDED AND CUMULATIVE NUMBERS ARE PRELIMINARY AND SUBJECT TO CHANGE						
<b>DOC Bituminous Coal Trade (000 Tons)</b>						
<b>Exports:</b>	March 07/06		% Chng	Jan - Mar 07/06		% Chng
Metallurgical	2,769	2,396	15.6%	6,718	6,565	2.3%
Steam	1,292	1,328	-2.7%	4,296	3,929	9.3%
<b>Imports:</b>	3,285	3,211	2.3%	8,786	8,958	-1.9%
<b>Week Ended</b>						
	05/26/07	05/27/06	% Chng	Cumulative Jan 1 to		
				05/26/07	05/27/06	% Chng
<b>EEl Electric Output (Mil. Kwh)</b>	73,946	73,935	0.0%	1,566,348	1,509,339	3.8%
<b>AISI Raw Steel Output (000 Tons)</b>	2,076	2,215	-6.3%	41,830	45,068	-7.2%
<b>EIA U.S. PETROLEUM DATA</b>						
4-Week Averages 000 Barrels per Day						
<b>Week Ending</b>						
	05/25/07	05/25/06	% Chng	Cumulative Daily Averages		
				2007	2006	% Chng
<b>PETROLEUM SUPPLY:</b>						
Domestic Crude	5,172	5,095	1.5	5,176	5,054	2.4
Net Imports (Incl. SPR)	10,536	10,137	3.9	9,943	9,849	1.0
SPR Stocks W/D or Added	-24	-29	--	-10	-27	--
Other Stocks W/D or added	-235	169	--	-178	-129	--
Natural Gas Liquids Prod.	2,252	2,457	-8.3	2,296	2,152	6.7



**NMA**  
THE AMERICAN RESOURCE

National Mining Association Web Site: [http:// www.nma.org](http://www.nma.org)

## EIA Estimated Weekly U.S. Coal Production Overview (Thousand Short Tons)

Coal-Producing Region and State	Week Ended			Year To Date		Percent Change	52 Weeks Ended		Percent Change
	5/26/2007	5/19/2007	5/27/2006	5/26/2007	5/26/2006		5/26/2007	5/27/2006	
Alabama	385	373	351	8,389	8,445	-0.7	18,964	20,429	-7.2
Alaska	26	25	29	537	577	-6.9	1,385	1,253	10.5
Arizona	148	144	128	3,419	3,178	7.6	8,457	10,068	-16.0
Arkansas	1	1	*	11	4	152.2	29	6	383.0
Colorado	736	713	863	15,444	14,114	9.4	37,561	36,562	2.7
Illinois	621	601	584	12,818	13,061	-1.9	31,925	31,441	1.5
Indiana	685	663	664	14,138	14,508	-2.5	35,350	34,958	1.1
Kansas	9	8	6	150	113	32.9	463	221	109.7
<b>Kentucky Total</b>	<b>2,229</b>	<b>2,158</b>	<b>2,266</b>	<b>46,323</b>	<b>50,818</b>	<b>-8.8</b>	<b>115,788</b>	<b>121,580</b>	<b>-4.8</b>
Eastern	1,673	1,620	1,776	35,111	39,459	-11.0	88,686	94,505	-6.2
Western	556	539	490	11,212	11,359	-1.3	27,102	27,075	0.1
Louisiana	44	19	90	965	1,474	-34.5	3,597	4,041	-11.0
Maryland	100	97	106	2,252	2,315	-2.7	4,990	5,319	-6.2
Mississippi	48	48	73	1,389	1,484	-6.4	3,695	3,625	1.9
Missouri	6	6	9	90	227	-60.4	257	598	-57.1
Montana	776	751	805	15,864	16,168	-1.9	41,422	40,744	1.7
New Mexico	485	469	556	10,026	10,506	-4.6	25,422	28,209	-9.9
North Dakota	506	490	501	11,315	12,045	-6.1	29,681	30,128	-1.5
Ohio	460	445	406	9,661	9,594	0.7	22,775	24,339	-6.4
Oklahoma	39	38	38	810	887	-8.6	1,922	1,996	-3.7
<b>Pennsylvania Total</b>	<b>1,180</b>	<b>1,142</b>	<b>1,325</b>	<b>24,493</b>	<b>28,023</b>	<b>-12.6</b>	<b>62,535</b>	<b>67,824</b>	<b>-7.8</b>
Anthracite	26	26	26	545	625	-12.8	1,434	1,652	-13.2
Bituminous	1,153	1,116	1,299	23,948	27,398	-12.6	61,101	66,172	-7.7
Tennessee	54	53	53	1,133	1,203	-5.9	2,734	3,101	-11.8
Texas	885	857	865	17,988	17,987	*	45,437	46,088	-1.4
Utah	448	434	476	9,154	10,878	-15.9	24,282	25,476	-4.7
Virginia	554	536	546	11,731	12,473	-5.9	29,106	28,767	1.2
Washington	-	-	59	-	1,267	-100.0	1,313	4,362	-69.9
<b>West Virginia Total</b>	<b>2,848</b>	<b>2,757</b>	<b>2,945</b>	<b>59,654</b>	<b>64,337</b>	<b>-7.3</b>	<b>147,093</b>	<b>154,866</b>	<b>-5.0</b>
Northern	882	854	860	18,634	18,681	-0.3	42,621	44,004	-3.1
Southern	1,966	1,903	2,085	41,019	45,656	-10.2	104,472	110,862	-5.8
Wyoming	8,636	9,020	8,424	180,668	175,499	2.9	450,831	416,241	8.3
<b>Appalachian Total</b>	<b>7,253</b>	<b>7,023</b>	<b>7,507</b>	<b>152,423</b>	<b>165,850</b>	<b>-8.1</b>	<b>376,881</b>	<b>399,150</b>	<b>-5.6</b>
<b>Interior Total</b>	<b>2,893</b>	<b>2,778</b>	<b>2,818</b>	<b>59,572</b>	<b>61,103</b>	<b>-2.5</b>	<b>149,776</b>	<b>150,048</b>	<b>-0.2</b>
<b>Western Total</b>	<b>11,762</b>	<b>12,046</b>	<b>11,841</b>	<b>246,427</b>	<b>244,232</b>	<b>0.9</b>	<b>620,353</b>	<b>593,043</b>	<b>4.6</b>
<b>East of Miss. River</b>	<b>9,164</b>	<b>8,874</b>	<b>9,317</b>	<b>191,981</b>	<b>206,260</b>	<b>-6.9</b>	<b>474,953</b>	<b>496,249</b>	<b>-4.3</b>
<b>West of Miss. River</b>	<b>12,744</b>	<b>12,973</b>	<b>12,849</b>	<b>266,441</b>	<b>264,924</b>	<b>0.6</b>	<b>672,057</b>	<b>645,992</b>	<b>4.0</b>
Bituminous and Lignite	21,881	21,822	22,140	457,877	470,560	-2.7	1,145,577	1,140,589	0.4
Anthracite	26	26	26	545	625	-12.8	1,434	1,652	-13.2
<b>U.S. Total</b>	<b>21,908</b>	<b>21,847</b>	<b>22,166</b>	<b>458,422</b>	<b>471,184</b>	<b>-2.7</b>	<b>1,147,011</b>	<b>1,142,241</b>	<b>0.4</b>
Railroad Cars Loaded	143,219	142,511	145,634	2,949,290	2,996,256	-1.6	7,408,391	7,232,729	2.4

Source: Energy Information Administration



**Volume 75 No. 21**

**OUTPUT FOR WEEK ENDED - May 26, 2007**

**May 31, 2007**

The net available amount of electric energy distributed by the Total Electric Utility Industry+ for the week ended Saturday, **May 26, 2007** was **73,946** gigawatthours (GWh), according to the Edison Electric Institute. This is equivalent to **183** on the weekly electric output index.

**WEEKLY ELECTRIC OUTPUT BY GEOGRAPHIC DIVISION**  
(48 CONTIGUOUS STATES)

	Week Ended May 26		52 Weeks Ended May 26	
	GWh Output	% Increase Over Corresponding Week of 2006	GWh Output	% Increase Over Corresponding Period of 2006
New England	2,424	5.6	133,437	-0.9
Mid-Atlantic	8,128	7.7	452,177	-0.1
Central Industrial	12,730	7.0	709,065	0.5
West Central	6,608	1.2	347,796	0.5
Southeast	19,840	-0.3	1,087,225	1.0
South Central	11,206	-16.7	602,439	1.0
Rocky Mountain	4,911	4.3	264,554	3.7
Pacific Northwest	2,728	7.4	154,622	2.9
Pacific Southwest	5,371	5.8	294,561	1.6
Total United States	73,946	0.0	4,045,876	1.0

**WEEKLY ELECTRIC OUTPUT IN PREVIOUS WEEKS--GWh**

Week Ended	2007	Week Ended	2006	% Inc. (07/06)	52 Weeks Ended	2007	% Inc. (07/06)
May 05	70,567	May 06	68,872	2.5	May 05	4,040,721	0.9
May 12	72,758	May 13	69,860	4.1	May 12	4,043,619	1.0
May 19	71,696	May 20	69,451	3.2	May 19	4,045,865	1.0
May 26	73,946	May 27	73,935	0.0	May 26	4,045,876	1.0
May 26	1,566,348	May 27	1,509,339	3.8	YEAR TO DATE, FIRST 21 WEEKS		

**WEEKLY ELECTRIC OUTPUT INDEX--TOTAL U.S.\***  
**SEASONALLY ADJUSTED 1982 = 100**

Week Ended	2007	Week Ended	2006	Week Ended	2005
May 05	183	May 06	177	May 07	165
May 12	183	May 13	175	May 14	172
May 19	178	May 20	171	May 21	176
May 26	183	May 27	183	May 28	181

\* Excludes Alaska and Hawaii

+ Includes investor-owned companies, cooperatives and government-owned utilities.

Copyright © 2007 Edison Electric Institute. All rights reserved.

## WEEKLY ELECTRIC OUTPUT BY GEOGRAPHIC DIVISION (48 CONTIGUOUS STATES)

	Week Ended			NMA CUMULATIVE JANUARY 1 to			52 Weeks Ended		
	26-May	27-May	% Increase Over Corresponding Week of 2006	26-May	27-May	% Increase Over Corresponding Week of 2006	26-May	27-May	% Increase Over Corresponding Week of 2006
	2007	2006		2007	2006		2007	2006	
	GWh Output	GWh Output		GWh Output	GWh Output		GWh Output	GWh Output	
<b>New England</b>	2,424	2,295	5.6%	<b>53,072</b>	<b>51,459</b>	<b>3.1%</b>	133,437	134,655	-0.9%
<b>Mid-Atlantic</b>	8,128	7,544	7.7%	<b>176,901</b>	<b>168,473</b>	<b>5.0%</b>	452,177	452,721	-0.1%
<b>Central Industrial</b>	12,730	11,903	6.9%	<b>282,808</b>	<b>268,629</b>	<b>5.3%</b>	709,065	705,765	0.5%
<b>West Central</b>	6,608	6,528	1.2%	<b>135,437</b>	<b>131,790</b>	<b>2.8%</b>	347,796	345,957	0.5%
<b>Southeast</b>	19,840	19,895	-0.3%	<b>420,779</b>	<b>405,644</b>	<b>3.7%</b>	1,087,225	1,076,132	1.0%
<b>South Central</b>	11,206	13,446	-16.7%	<b>220,755</b>	<b>216,688</b>	<b>1.9%</b>	602,439	596,605	1.0%
<b>Rocky Mountain</b>	4,911	4,708	4.3%	<b>97,430</b>	<b>93,500</b>	<b>4.2%</b>	264,554	255,154	3.7%
<b>Pacific Northwest</b>	2,728	2,539	7.4%	<b>66,281</b>	<b>63,032</b>	<b>5.2%</b>	154,622	150,291	2.9%
<b>Pacific Southwest</b>	5,371	5,077	5.8%	<b>112,884</b>	<b>110,127</b>	<b>2.5%</b>	294,561	289,918	1.6%
<b>Total United States *</b>	73,946	73,935	0.0%	<b>1,566,347</b>	<b>1,509,342</b>	<b>3.8%</b>	4,045,876	4,007,198	1.0%

**Notes:** EEI output data are an estimate of electricity load made available for distribution derived as weekly net generation + purchases from non-utilities + net imports - exports - sales for resale. It is not meant to be a measure of electricity generation for the U.S. EEI survey data represent the majority of national distribution (large utilities, large government power projects, some independent and large municipal power projects). The remaining segment of the industry (smaller producers) is estimated. Non-utility generation is captured via direct sales to utilities.

\* Excludes Alaska and Hawaii

\*\* Less than one-tenth of one percent

SOURCE: Edison Electric Institute (EEI), *Weekly Electric Output Report*.

AMERICAN IRON AND STEEL INSTITUTE  
 1140 Connecticut Avenue, Suite 705  
 Washington, D.C. 20036

May 29, 2007

**ESTIMATED WEEKLY RAW STEEL\* PRODUCTION**

<u>Period</u>	Thousand <u>Net Tons</u>	Percent Change from Previous <u>Period</u>	Percent Capability <u>Utilization**</u>	<u>Production by District</u>		
				<u>Week Ending</u>		
				<u>May 26</u>	<u>May 19</u>	
<b><u>Week Ending</u></b>				North East Coast	134	125
				Pgh/Youngstown	224	225
				Lake Erie	106	108
May 26, 2007	2,076	-0.4	86.8	Detroit	88	88
May 26, 2006	2,215	-6.2	92.5	Indiana/Chicago	537	540
May 19, 2007	2,085	0.8	87.2	Midwest	254	253
<b><u>Year-to-Date+</u></b>				Southern	641	655
				Western	<u>92</u>	<u>91</u>
May 26, 2007	41,830	-7.1	84.4	Total	2076	2085
May 26, 2006	45,068	-	90.2			

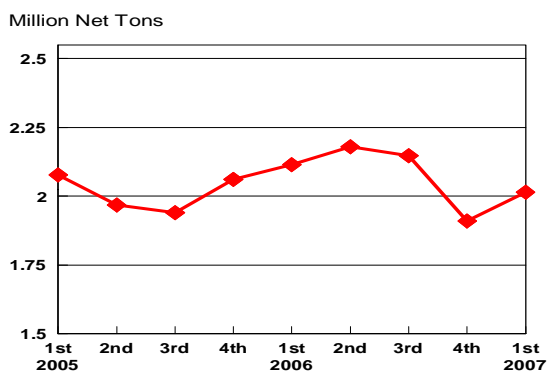
\*Raw steel production tonnage included in this report is estimated based on a sampling of steel producers. Therefore, this report should be used primarily to assess production trends. The AISI production report "AIS 7," produced monthly and available by subscription, provides a more accurate summary of steel production based on data supplied by companies representing approximately 75% of U.S. production capacity.

+Includes revisions for previous months

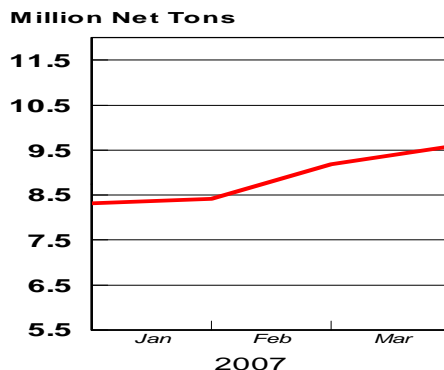
NOTE: Capability for the First Quarter 2007 is approximately 31.2 million net tons vs 30.5 million net tons for the same period last year, and 30.7 million tons for the fourth quarter of 2006.

Capability -	2003 approx.	2.3 million tons/week
	2004	2.2
	2005	2.3
	2006	2.4
	2007	2.4

**Average Weekly Raw Steel Production**

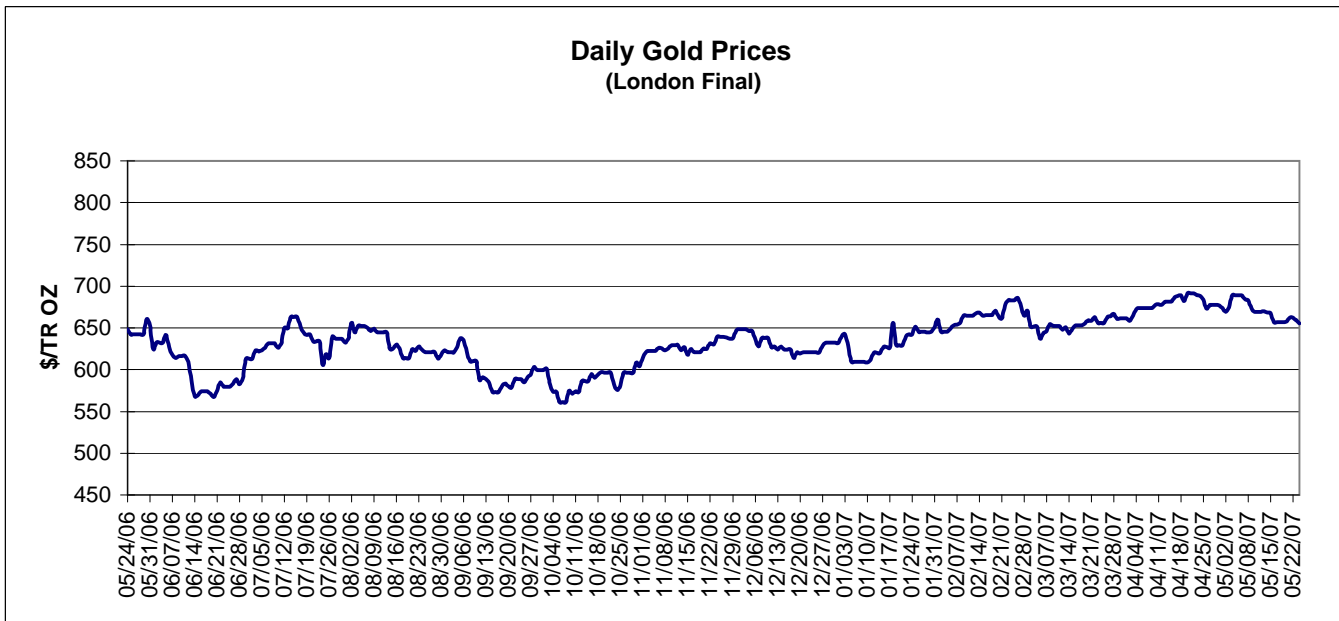
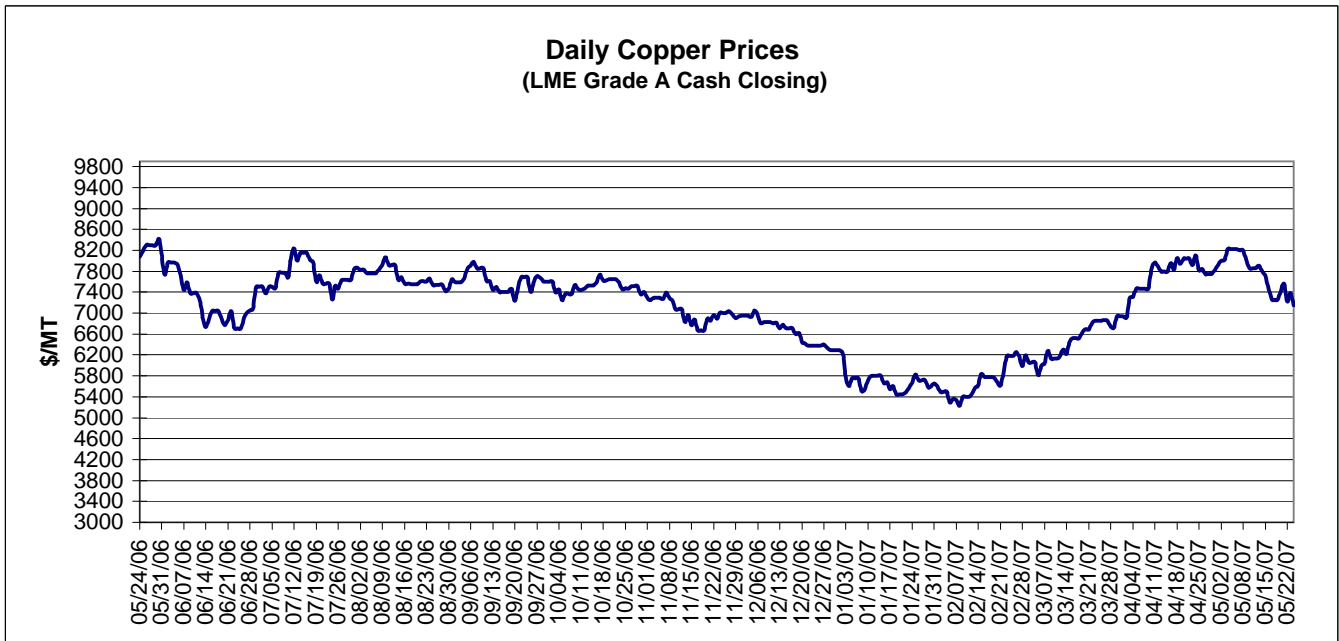


**MONTHLY RAW STEEL PRODUCTION**



\*Steel in the first solid state after melting suitable for further processing or sale, including ingots, steel for castings and strand or pressure cast blooms, slabs, or other product forms.

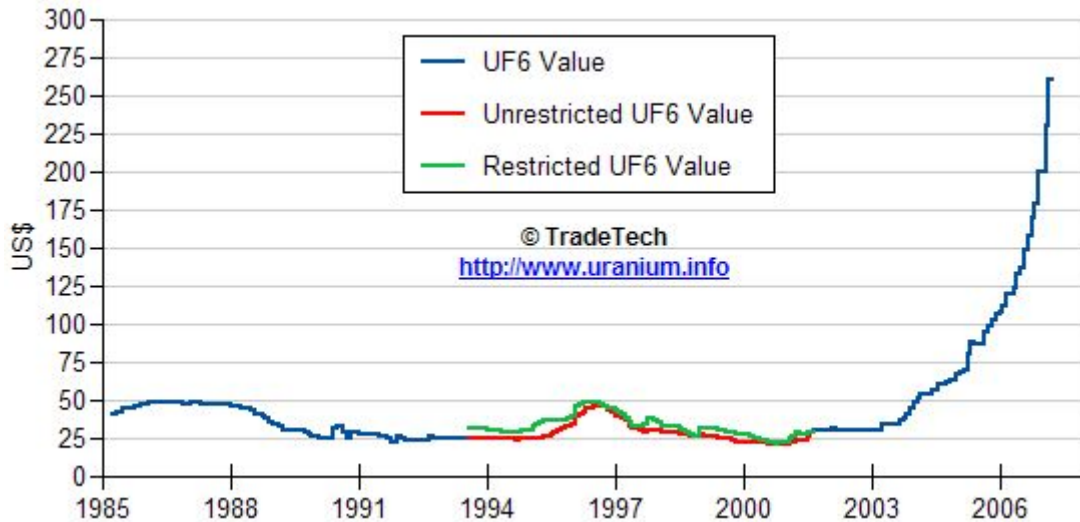
\*\* Based on tonnage capability to produce raw steel for a sustained full order book.



Data reflect closings on weekends and holidays.

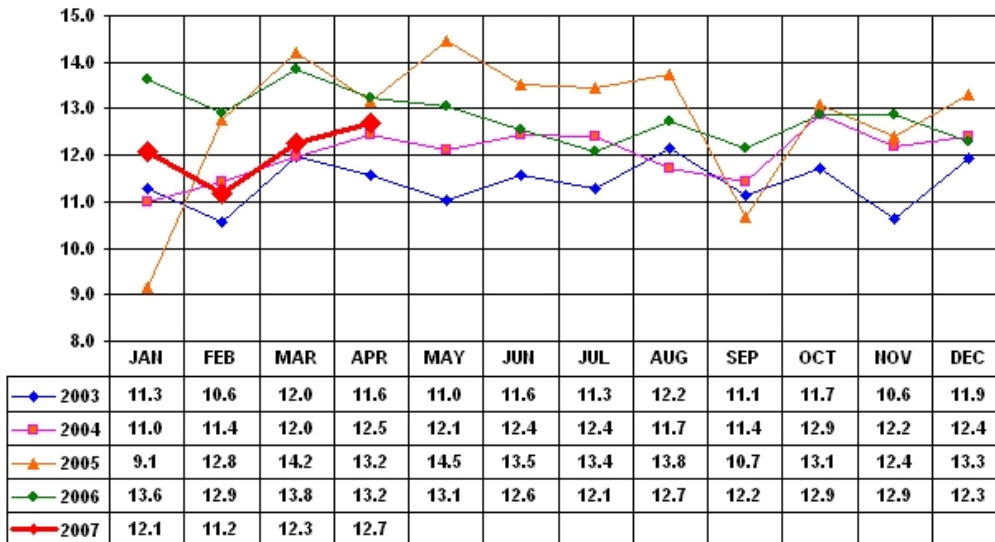
Source: Platts Metals Week

### Trade Tech's Uranium (UF6) Monthly Spot Prices (US\$/kg as UF6)



Source: Trade Tech, Uranium Info Website – <http://www.uranium.info>

### Coal and Coke Monthly Tonnage Indicator for Internal U.S. Waterways



Source: U.S. Army Corps of engineers, Waterborne Commerce Statistics Center