
National Mining Association

Weekly Statistical Summary

June 13, 2008 Edition
(Data for Week Ending June 7, 2008)

Prepared by
National Mining Association



Suite 500 East, 101 Constitution Avenue, NW
Washington, DC, 20001
Phone (202) 463-2600
Visit us at <http://www.nma.org>

NMA Weekly Statistical Summary

Vol. 46, No. 23
Dated 06/13/08

PRODUCTION, CONSUMPTION & TRADE						
	Week Ended			* Cumulative Jan 1 to		
	06/07/08	06/09/07	% Chng	06/07/08	06/07/07	% Chng
EIA Coal Production (000 Tons):						
Week Ended/Year to Date	21,784	21,490	1.4%	512,647	498,812	2.8%
52 Weeks Ended	1,154,149	1,149,649	0.4%			
* Due to leap year, 2008 cumulative reflects one extra day of tonnage.						
	May 08/07		% Chng	Jan - May 08/07		% Chng
Month Ended -- May	97,554	96,999	0.6%	490,862	475,947	3.1%
MONTH ENDED AND CUMULATIVE NUMBERS ARE PRELIMINARY AND SUBJECT TO CHANGE						
DOC Bituminous Coal Trade (000 Tons)						
	March 08/07		% Chng	Jan - Mar 08/07		% Chng
Exports:						
Metallurgical	3,745	2,769	35.2%	9,101	6,718	35.5%
Steam	2,901	1,292	124.5%	6,600	4,296	53.6%
Imports:	2,640	3,285	-19.6%	7,640	8,786	-13.0%
	Week Ended			* Cumulative Jan 1 to		
	06/07/08	06/09/07	% Chng	06/07/08	06/09/07	% Chng
EEl Electric Output (Mil. Kwh)	82,141	78,952	4.0%	1,729,850	1,722,336	0.4%
AISI Raw Steel Output (000 Tons)	2,134	2,119	0.7%	48,124	46,760	2.9%
EIA U.S. PETROLEUM DATA						
4-Week Averages						
000 Barrels per Day						
	Week Ending			Cumulative Daily Averages		
	06/06/08	06/06/07	% Chng	2008	2007	% Chng
PETROLEUM SUPPLY:						
Domestic Crude	5,107	5,222	-2.2	5,111	5,195	-1.6
Net Imports (Incl. SPR)	9,391	10,198	-7.9	9,684	10,000	-3.2
SPR Stocks W/D or Added	-81	-23	--	-48	-11	--
Other Stocks W/D or added	842	-329	--	-77	-238	--
Natural Gas Liquids Prod.	2,366	2,438	-3.0	2,280	2,353	-3.1



NMA

THE AMERICAN RESOURCE National Mining Association Web Site: [http:// www.nma.org](http://www.nma.org)

EIA Estimated Weekly U.S. Coal Production Overview (Thousand Short Tons)

Coal-Producing Region and State	Week Ended			Year to Date			52 Weeks Ended		
	6/7/2008	5/31/2008	6/9/2007	6/7/2008	6/7/2007	Percent Change	6/7/2008	6/9/2007	Percent Change
Alabama	376	368	355	8,896	8,622	3.2	19,717	18,610	5.9
Alaska	26	26	26	588	709	-17.1	1,197	1,505	-20.4
Arizona	112	110	156	2,738	3,545	-22.8	7,144	8,306	-14.0
Arkansas	2	2	1	43	31	37.6	94	49	92.5
Colorado	707	692	779	16,393	15,453	6.1	37,119	36,355	2.1
Illinois	639	626	679	15,318	16,185	-5.4	31,516	34,827	-9.5
Indiana	683	669	669	16,256	15,185	7.1	35,928	34,915	2.9
Kansas	10	10	9	232	192	20.5	458	491	-6.7
Kentucky Total	2,288	2,240	2,238	53,139	51,512	3.2	116,369	117,330	-0.8
Eastern	1,664	1,629	1,722	38,739	39,016	-0.7	86,337	89,795	-3.9
Western	625	611	515	14,400	12,497	15.2	30,031	27,535	9.1
Louisiana	44	70	56	1,730	940	84.1	3,838	3,433	11.8
Maryland	49	48	42	1,038	1,003	3.5	2,321	3,540	-34.4
Mississippi	45	45	83	1,426	1,547	-7.8	3,403	3,700	-8.0
Missouri	5	5	4	108	102	5.4	241	252	-4.6
Montana	862	843	767	19,666	17,408	13.0	45,440	41,582	9.3
New Mexico	465	456	575	10,735	11,048	-2.8	24,015	25,601	-6.2
North Dakota	532	521	523	12,961	12,805	1.2	29,658	30,285	-2.1
Ohio	468	458	396	10,846	9,435	14.9	23,881	21,855	9.3
Oklahoma	36	36	33	854	732	16.8	1,764	1,775	-0.6
Pennsylvania Total	1,277	1,251	1,283	29,891	29,924	-0.1	64,891	65,673	-1.2
Anthracite	39	38	30	847	695	21.9	1,703	1,546	10.2
Bituminous	1,239	1,213	1,253	29,044	29,229	-0.6	63,187	64,127	-1.5
Tennessee	50	49	48	1,134	1,177	-3.6	2,592	2,688	-3.6
Texas	831	813	788	19,059	17,429	9.3	43,359	43,472	-0.3
Utah	469	459	490	10,610	10,830	-2.0	23,981	25,079	-4.4
Virginia	458	449	547	11,231	12,558	-10.6	23,935	28,941	-17.3
Washington	--	--	--	--	--	--	0	1,216	-100.0
West Virginia Total	3,013	2,950	2,979	70,209	68,767	2.1	154,053	151,520	1.7
Northern	916	897	816	21,764	19,644	10.8	43,906	41,812	5.0
Southern	2,097	2,053	2,163	48,445	49,123	-1.4	110,148	109,708	0.4
Wyoming	8,335	8,007	7,966	197,546	191,673	3.1	457,235	446,650	2.4
Appalachian Total	7,356	7,202	7,372	171,984	170,502	0.9	377,728	382,623	-1.3
Interior Total	2,919	2,886	2,836	69,426	64,839	7.1	150,632	150,448	0.1
Western Total	11,509	11,114	11,282	271,237	263,471	2.9	625,789	616,578	1.5
East of Miss. River	9,348	9,153	9,317	219,384	215,915	1.6	478,605	483,599	-1.0
West of Miss. River	12,437	12,050	12,173	293,262	282,898	3.7	675,543	666,050	1.4
Bituminous and Lignite	21,746	21,165	21,460	511,800	498,117	2.7	1,152,445	1,148,103	0.4
Anthracite	39	38	30	847	695	21.9	1,703	1,546	10.2
U.S. Total	21,784	21,203	21,490	512,647	498,812	2.8	1,154,149	1,149,649	0.4
Railroad Cars Loaded	141,482	136,953	137,657	3,357,091	3,229,649	3.9	7,531,474	7,400,224	1.8

Source: Energy Information Administration



Volume 76 No. 23

OUTPUT FOR WEEK ENDED - Jun 07, 2008

Jun 11, 2008

The net available amount of electric energy distributed by the Total Electric Utility Industry+ for the week ended Saturday, **Jun 07, 2008** was **82,141** gigawatthours (GWh), according to the Edison Electric Institute. This is equivalent to **188** on the weekly electric output index.

WEEKLY ELECTRIC OUTPUT BY GEOGRAPHIC DIVISION

(48 CONTIGUOUS STATES)

	Week Ended June 07		52 Weeks Ended June 07	
	GWh Output	% Increase Over Corresponding Week of 2007	GWh Output	% Increase Over Corresponding Period of 2007
New England	2,409	-1.8	132,715	-0.6
Mid-Atlantic	8,759	-1.0	453,844	0.1
Central Industrial	13,605	2.4	720,253	1.5
West Central	6,509	0.9	352,824	1.8
Southeast	23,410	7.6	1,110,766	2.1
South Central	14,485	11.7	604,692	0.7
Rocky Mountain	4,938	-6.4	277,907	5.2
Pacific Northwest	2,887	5.0	166,041	7.1
Pacific Southwest	5,139	-0.3	289,084	-1.7
Total United States	82,141	4.0	4,108,126	1.6

WEEKLY ELECTRIC OUTPUT IN PREVIOUS WEEKS--GWh

Week Ended	2008	Week Ended	2007	% Inc. (08/07)	52 Weeks Ended	2008	% Inc. (08/07)
May 17	69,639	May 19	71,696	-2.9	May 17	4,108,163	1.5
May 24	73,798	May 26	73,946	-0.2	May 24	4,108,015	1.5
May 31	73,959	Jun 02	77,036	-4.0	May 31	4,104,937	1.5
Jun 07	82,141	Jun 09	78,952	4.0	Jun 07	4,108,126	1.6
Jun 07	1,729,850	Jun 09	1,722,336	0.4	YEAR TO DATE, FIRST 23 WEEKS		

WEEKLY ELECTRIC OUTPUT INDEX--TOTAL U.S.*

SEASONALLY ADJUSTED 1982 = 100

Week Ended	2008	Week Ended	2007	Week Ended	2006
May 17	174	May 19	178	May 20	171
May 24	179	May 26	183	May 27	183
May 31	177	Jun 02	190	Jun 03	196
Jun 07	188	Jun 09	194	Jun 10	187

* Excludes Alaska and Hawaii.

+ Includes investor-owned companies, cooperatives and government-owned utilities.

Copyright © 2008 Edison Electric Institute. All rights reserved.

**WEEKLY ELECTRIC OUTPUT BY GEOGRAPHIC DIVISION
(48 CONTIGUOUS STATES)**

	Week Ended			NMA CUMULATIVE JANUARY WEEK ONE TO			52 Weeks Ended		
	7-Jun 2008 GWh Output	9-Jun 2007 GWh Output	% Increase Over Corresponding Week of 2007	7-Jun 2008 GWh Output	9-Jun 2007 GWh Output	% Increase Over Corresponding Week of 2007	7-Jun 2008 GWh Output	9-Jun 2007 GWh Output	% Increase Over Corresponding Week of 2007
New England	2,409	2,453	-1.8%	56,305	58,036	-3.0%	132,715	133,555	-0.6%
Mid-Atlantic	8,759	8,848	-1.0%	190,044	194,869	-2.5%	453,844	453,350	0.1%
Central Industrial	13,605	13,292	2.4%	307,944	309,829	-0.6%	720,253	709,311	1.5%
West Central	6,509	6,453	0.9%	148,856	148,246	0.4%	352,824	346,516	1.8%
Southeast	23,410	21,761	7.6%	467,472	463,366	0.9%	1,110,766	1,087,426	2.1%
South Central	14,485	12,967	11.7%	251,838	245,280	2.7%	604,692	600,707	0.7%
Rocky Mountain	4,938	5,274	-6.4%	108,290	107,812	0.4%	277,907	264,291	5.2%
Pacific Northwest	2,887	2,749	5.0%	78,672	71,711	9.7%	166,041	154,986	7.1%
Pacific Southwest	5,139	5,155	-0.3%	120,430	123,186	-2.2%	289,084	294,063	-1.7%
Total United States *	82,141	78,952	4.0%	1,729,851	1,722,335	0.4%	4,108,126	4,044,205	1.6%

Notes: EEI output data are an estimate of electricity load made available for distribution derived as weekly net generation + purchases from non-utilities + net imports - exports - sales for resale. It is not meant to be a measure of electricity generation for the U.S. EEI survey data represent the majority of national distribution (large utilities, large government power projects, some independent and large municipal power projects). The remaining segment of the industry (smaller producers) is estimated. Non-utility generation is captured via direct sales to utilities.

* Excludes Alaska and Hawaii

** Less than one-tenth of one percent

SOURCE: Edison Electric Institute (EEI), *Weekly Electric Output Report*.

AMERICAN IRON AND STEEL INSTITUTE
 1140 Connecticut Avenue, Suite 705
 Washington, D.C. 20036

June 9, 2008

ESTIMATED WEEKLY RAW STEEL* PRODUCTION

<u>Period</u>	Thousand <u>Net Tons</u>	Percent Change from Previous <u>Period</u>	Percent Capability <u>Utilization**</u>	<u>Production by District</u>		
				<u>Week Ending</u>		
				<u>June 7</u>	<u>May 31</u>	
<u>Week Ending</u>						
				North East Coast	182	166
				Pgh/Youngstown	213	214
				Lake Erie	86	85
				Detroit	105	92
				Indiana/Chicago	518	530
				Midwest	262	261
				Southern	671	672
				Western	<u>96</u>	<u>94</u>
				Total	2,133	2,114
<u>Year-to-Date+</u>						
June 7, 2008	2,134	0.9	89.4			
June 7, 2007	2,119	0.7	88.6			
May 31, 2008	2,114	-1.2	88.6			
June 7, 2008	48,124	2.9	88.8			
June 7, 2007	46,760	-	85.7			

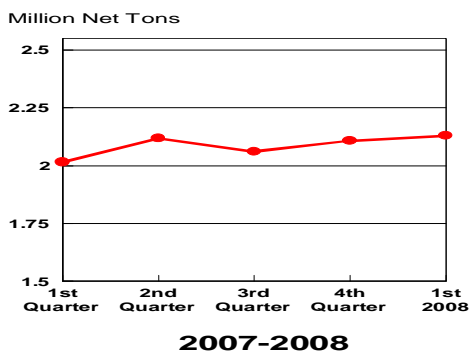
*Raw steel production tonnage included in this report is estimated based on a sampling of steel producers. Therefore, this report should be used primarily to assess production trends. The AISI production report "AIS 7," produced monthly and available by subscription, provides a more accurate summary of steel production based on data supplied by companies representing approximately 75% of U.S. production capacity.

+Includes revisions for previous months

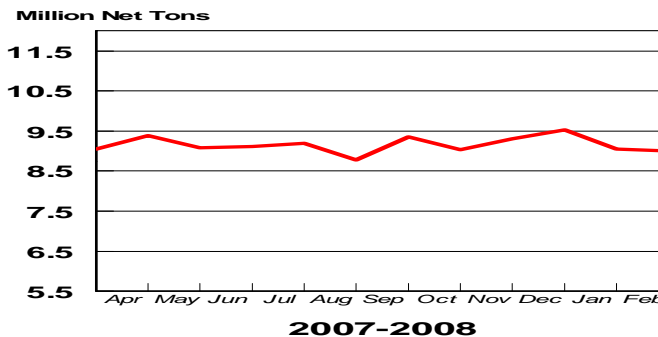
NOTE: Capability for the Fourth Quarter 2007 is approximately 31.3 million net tons vs 30.7 million net tons for the same period last year, and 30.1 million tons for the third quarter of 2007.

Capability -	2003 approx.	2.3 million tons/week
	2004	2.2
	2005	2.3
	2006	2.4
	2007	2.4

Average Weekly Raw Steel Production

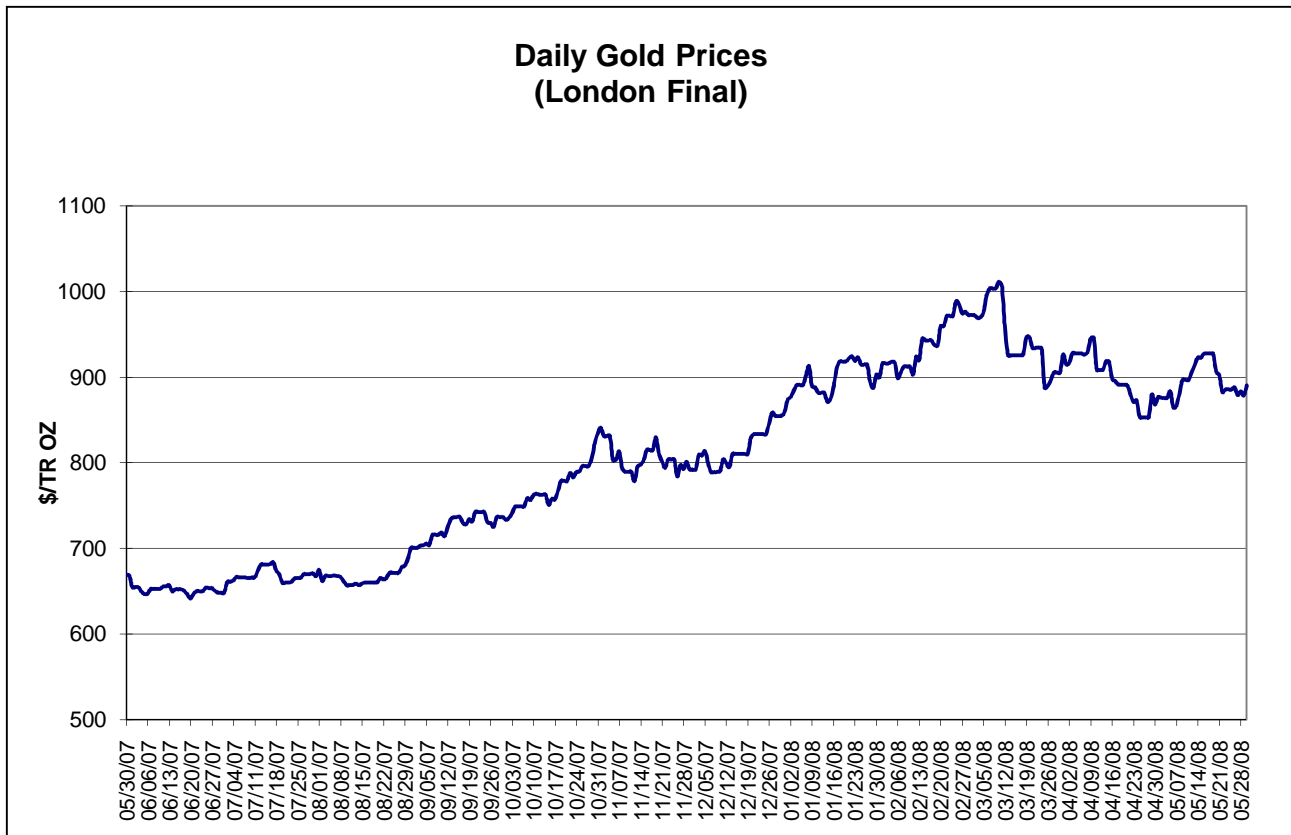
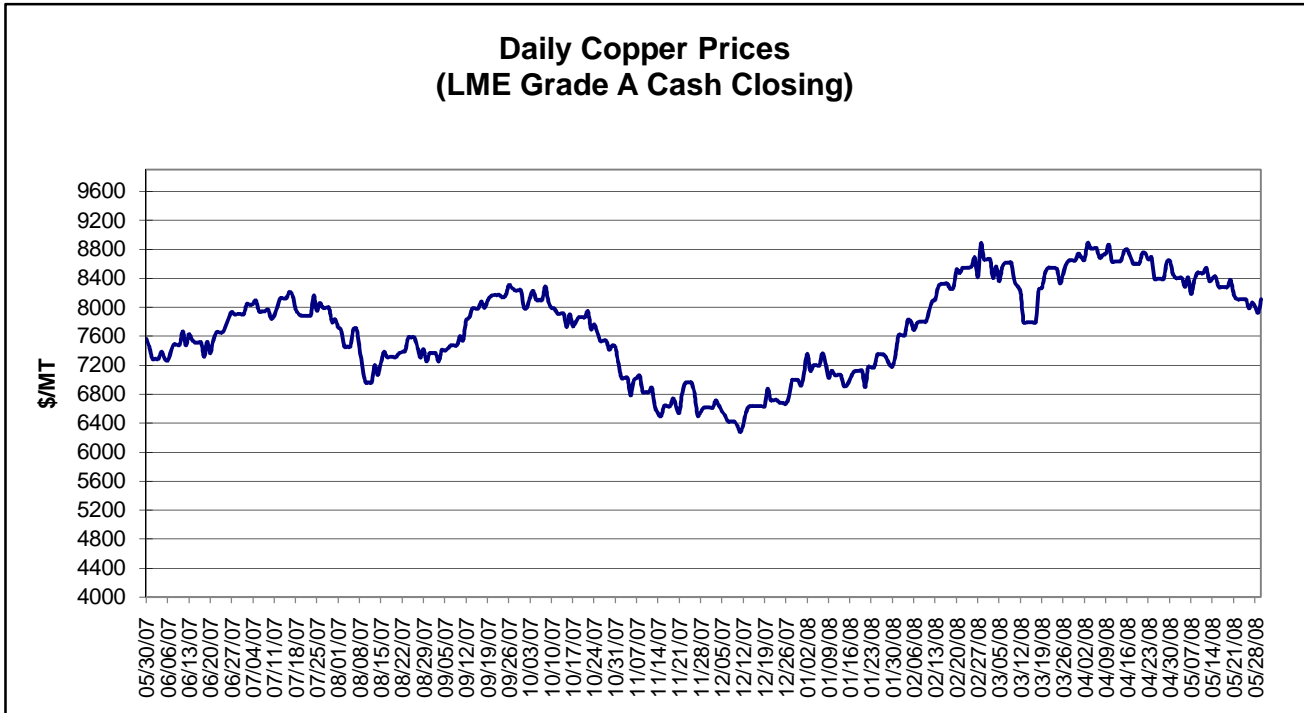


Monthly Raw Steel Production



*Steel in the first solid state after melting suitable for further processing or sale, including ingots, steel for castings and strand or pressure cast blooms, slabs, or other product forms.

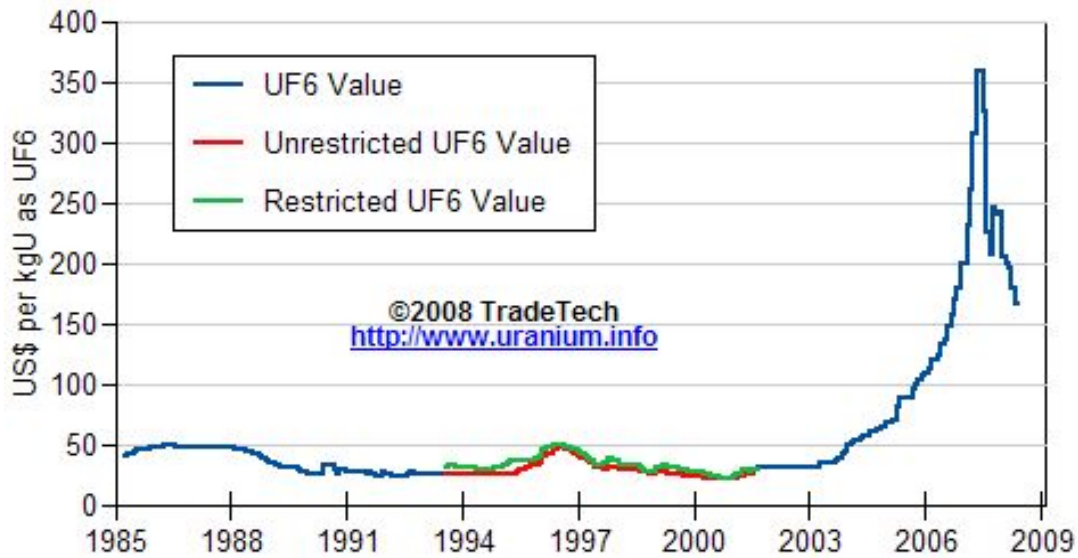
** Based on tonnage capability to produce raw steel for a sustained full order book.



Data reflect closings on weekends and holidays.

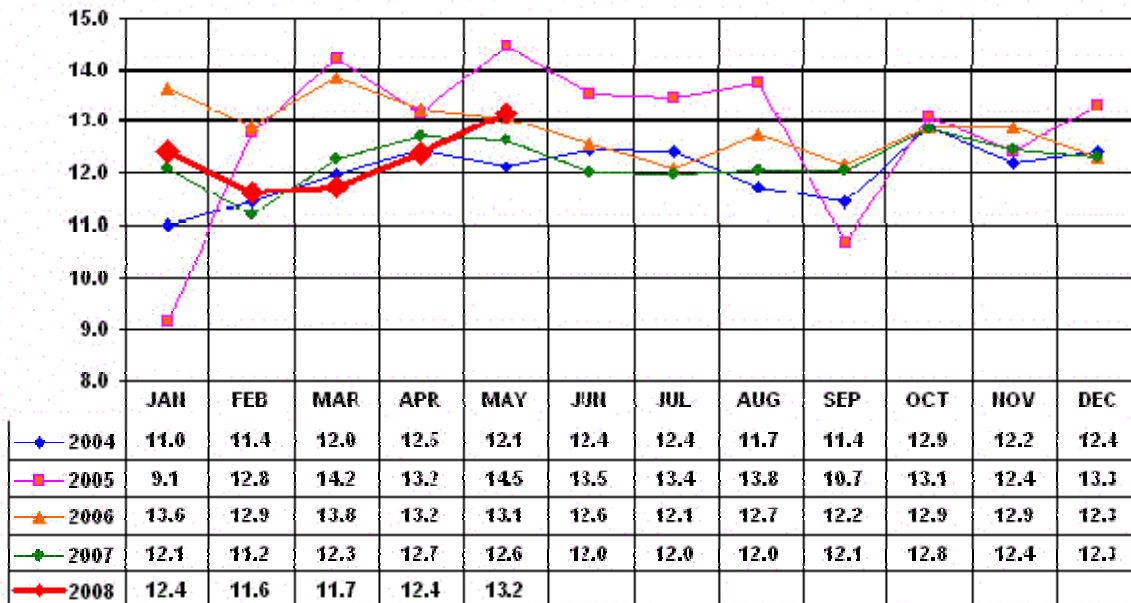
Source: Platts Metals Week

Trade Tech's Uranium (UF6) Monthly Spot Prices (US\$/kg as UF6)



Source: Trade Tech, Uranium Info Website – <http://www.uranium.info>

Coal and Coke Monthly Tonnage Indicator for Internal U.S. Waterways



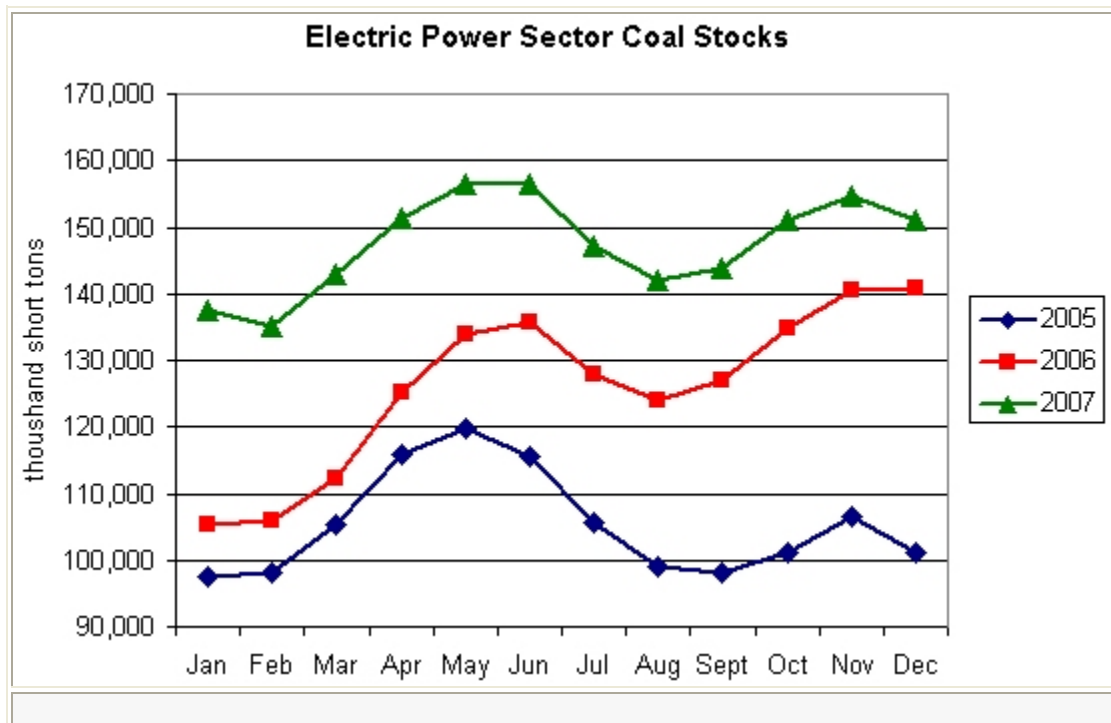
Source: U.S. Army Corps of Engineers, Waterborne Commerce Statistics Center

EIA Weekly Spot Coal Prices

The following average spot coal prices appear in the graphic below, for the previous and most recent weeks: (Dollars per Short Ton)

Week Ended	Central Appalachia 12,500 Btu, 1.2 SO2	Northern Appalachia 13,000 Btu, <3.0 SO2	Illinois Basin 11,800 Btu, 5.0 SO2	Powder River Basin 8,800 Btu, 0.8 SO2	Uinta Basin 11,700 Btu, 0.8 SO2
02-May-08	\$94.25	\$105.00	\$58.00	\$14.20	\$44.00
09-May-08	\$96.75	\$105.00	\$58.00	\$14.00	\$44.00
16-May-08	\$100.90	\$105.00	\$58.00	\$14.00	\$44.00
23-May-08	\$104.25	\$105.00	\$65.00	\$14.15	\$44.00
30-May-08	\$108.25	\$105.00	\$65.00	\$14.10	\$44.00
06-June-08	\$108.25	\$105.00	\$65.00	\$13.30	\$44.00

Source: Energy Information Administration (from Platts *Coal Outlook*, "Weekly Price Survey")



Source: Energy Information Administration