
National Mining Association

Weekly Statistical Summary

June 15, 2007 Edition
(Data for Week Ending June 9, 2007)

Prepared by
National Mining Association



Suite 500 East, 101 Constitution Avenue, NW
Washington, DC, 20001
Phone (202) 463-2600
Visit us at <http://www.nma.org>

NMA Weekly Statistical Summary

Vol. 45, No. 23
Dated 06/15/07

PRODUCTION, CONSUMPTION & TRADE						
	Week Ended			Cumulative Jan 1 to		
	06/09/07	06/10/06	% Chng	06/09/07	06/10/06	% Chng
EIA Coal Production (000 Tons):						
Week Ended/Year to Date	21,329	22,105	-3.5%	501,275	515,453	-2.8%
52 Weeks Ended	1,145,602	1,143,476	0.2%			
Month Ended -- May						
	May 07/06		% Chng	Jan - May 07/06		% Chng
	96,231	99,827	-3.6%	473,733	484,357	-2.2%
MONTH ENDED AND CUMULATIVE NUMBERS ARE PRELIMINARY AND SUBJECT TO CHANGE						
DOC Bituminous Coal Trade (000 Tons)						
Exports:	April 07/06			Jan - Apr 07/06		
			% Chng			% Chng
Metallurgical	2,405	2,047	17.5%	9,124	8,612	5.9%
Steam	2,415	1,401	72.4%	6,712	5,331	25.9%
Imports:	2,687	3,030	-11.3%	11,473	11,987	-4.3%
Week Ended						
	06/09/07	06/10/06	% Chng	Cumulative Jan 1 to		
				06/09/07	06/10/06	% Chng
EEl Electric Output (Mil. Kwh)	78,952	78,485	0.6%	1,722,336	1,666,998	3.3%
AISI Raw Steel Output (000 Tons)	2,039	2,207	-7.6%	45,959	49,490	-7.1%
EIA U.S. PETROLEUM DATA						
4-Week Averages 000 Barrels per Day						
Week Ending						
	06/08/07	06/08/06	% Chng	Cumulative Daily Averages		
				2007	2006	% Chng
PETROLEUM SUPPLY:						
Domestic Crude	5,176	5,130	0.9	5,166	5,063	2.0
Net Imports (Incl. SPR)	10,300	10,310	-0.1	10,031	9,900	1.3
SPR Stocks W/D or Added	-24	-11	--	-10	-25	--
Other Stocks W/D or added	-8	206	--	-200	-101	--
Natural Gas Liquids Prod.	2,351	2,368	-0.7	2,303	2,160	6.6



NMA
THE AMERICAN RESOURCE

National Mining Association Web Site: [http:// www.nma.org](http://www.nma.org)

EIA Estimated Weekly U.S. Coal Production Overview (Thousand Short Tons)

Coal-Producing Region and State	Week Ended			Year-to-Date			52 Weeks Ended		
	6/9/2007	6/2/2007	6/10/2006	6/9/2007	6/9/2006	Percent Change	6/9/2007	6/10/2006	Percent Change
Alabama	387	385	316	8,982	9,104	-1.3	18,898	20,243	-6.6
Alaska	26	26	29	714	634	12.6	1,505	1,252	20.2
Arizona	149	148	185	3,508	3,487	0.6	8,238	9,905	-16.8
Arkansas	1	1	1	24	5	342.2	41	7	485.2
Colorado	739	734	575	15,266	15,564	-1.9	35,963	36,552	-1.6
Illinois	624	620	584	15,713	14,215	10.5	33,665	31,277	7.6
Indiana	688	683	664	15,826	15,820	*	35,725	34,965	2.2
Kansas	9	9	10	193	129	49.3	490	230	113.0
Kentucky Total	2,239	2,224	2,398	51,625	55,430	-6.9	116,476	121,463	-4.1
Eastern	1,680	1,669	1,908	38,583	43,102	-10.5	88,513	94,391	-6.2
Western	559	555	490	13,041	12,328	5.8	27,962	27,072	3.3
Louisiana	75	90	65	1,043	1,629	-36.0	3,521	4,059	-13.3
Maryland	100	100	106	1,587	2,525	-37.2	4,114	5,310	-22.5
Mississippi	85	85	78	1,589	1,658	-4.2	3,720	3,702	0.5
Missouri	6	6	9	116	245	-52.5	266	594	-55.3
Montana	780	774	805	17,737	17,761	-0.1	41,703	40,864	2.1
New Mexico	487	483	422	10,303	11,474	-10.2	24,733	28,067	-11.9
North Dakota	509	505	501	12,770	13,035	-2.0	30,146	30,141	*
Ohio	462	459	385	10,170	10,377	-2.0	22,501	24,187	-7.0
Oklahoma	39	39	38	800	962	-16.9	1,836	1,999	-8.1
Pennsylvania Total	1,185	1,177	1,325	29,168	30,644	-4.8	64,590	67,961	-5.0
Anthracite	27	26	26	666	677	-1.6	1,503	1,639	-8.3
Bituminous	1,158	1,150	1,299	28,502	29,967	-4.9	63,087	66,322	-4.9
Tennessee	55	54	48	1,250	1,302	-4.0	2,752	3,074	-10.5
Texas	888	883	778	18,639	19,622	-5.0	44,464	45,995	-3.3
Utah	450	447	519	10,539	11,862	-11.2	24,682	25,494	-3.2
Virginia	556	553	584	12,739	13,589	-6.3	28,997	28,810	0.6
Washington	0	0	39	0	1,364	-100.0	1,216	4,243	-71.3
West Virginia Total	2,860	2,841	2,944	68,478	70,161	-2.4	150,094	154,558	-2.9
Northern	886	880	860	20,743	20,382	1.8	43,029	44,010	-2.2
Southern	1,975	1,961	2,084	47,734	49,778	-4.1	107,064	110,548	-3.2
Wyoming	7,931	8,557	8,698	192,497	192,856	-0.2	445,268	418,523	6.4
Appalachian Total	7,285	7,237	7,616	170,957	180,804	-5.4	380,459	398,535	-4.5
Interior Total	2,973	2,969	2,716	66,984	66,613	0.6	151,690	149,901	1.2
Western Total	11,070	11,675	11,774	263,334	268,036	-1.8	613,453	595,041	3.1
East of Miss. River	9,240	9,180	9,431	217,126	224,825	-3.4	481,532	495,551	-2.8
West of Miss. River	12,088	12,701	12,674	284,148	290,629	-2.2	664,070	647,926	2.5
Bituminous and Lignite	21,302	21,855	22,079	500,609	514,777	-2.8	1,144,099	1,141,837	0.2
Anthracite	27	26	26	666	677	-1.6	1,503	1,639	-8.3
U.S. Total	21,329	21,881	22,105	501,275	515,453	-2.8	1,145,602	1,143,476	0.2
Railroad Cars Loaded	137,657	142,702	147,966	3,229,649	3,284,782	-1.7	7,400,224	7,252,157	2.0

Source: Energy Information Administration



WEEKLY ELECTRIC OUTPUT

Essential Energy Information from EEI's Statistics Department

Volume 75 No. 23

OUTPUT FOR WEEK ENDED - Jun 09, 2007

Jun 13, 2007

The net available amount of electric energy distributed by the Total Electric Utility Industry+ for the week ended Saturday, Jun 09, 2007 was 78,952 gigawatthours (GWh), according to the Edison Electric Institute. This is equivalent to 194 on the weekly electric output index.

WEEKLY ELECTRIC OUTPUT BY GEOGRAPHIC DIVISION

(48 CONTIGUOUS STATES)

	Week Ended June 09		52 Weeks Ended June 09	
	GWh Output	% Increase Over Corresponding Week of 2006	GWh Output	% Increase Over Corresponding Period of 2006
New England	2,453	5.0	133,555	-0.6
Mid-Atlantic	8,848	12.7	453,350	0.2
Central Industrial	13,292	3.5	709,311	0.5
West Central	6,453	-6.7	346,516	-0.2
Southeast	21,761	4.7	1,087,426	0.8
South Central	12,967	-7.3	600,707	0.5
Rocky Mountain	5,274	-8.4	264,291	3.0
Pacific Northwest	2,749	8.7	154,986	3.0
Pacific Southwest	5,155	-6.0	294,063	1.2
Total United States	78,952	0.6	4,044,205	0.8

WEEKLY ELECTRIC OUTPUT IN PREVIOUS WEEKS--GWh

Week Ended	2007	Week Ended	2006	% Inc. (07/06)	52 Weeks Ended	2007	% Inc. (07/06)
May 19	71,696	May 20	69,451	3.2	May 19	4,045,865	1.0
May 26	73,946	May 27	73,935	0.0	May 26	4,045,876	1.0
Jun 02	77,036	Jun 03	79,174	-2.7	Jun 02	4,043,738	0.7
Jun 09	78,952	Jun 10	78,485	0.6	Jun 09	4,044,205	0.8
Jun 09	1,722,336	Jun 10	1,666,998	3.3	YEAR TO DATE, FIRST 23 WEEKS		

WEEKLY ELECTRIC OUTPUT INDEX--TOTAL U.S.*

SEASONALLY ADJUSTED 1982 = 100

Week Ended	2007	Week Ended	2006	Week Ended	2005
May 19	178	May 20	171	May 21	176
May 26	183	May 27	183	May 28	181
Jun 02	190	Jun 03	196	Jun 04	166
Jun 09	194	Jun 10	187	Jun 11	188

* Excludes Alaska and Hawaii

+ Includes investor-owned companies, cooperatives and government-owned utilities.

Copyright © 2007 Edison Electric Institute. All rights reserved.

WEEKLY ELECTRIC OUTPUT BY GEOGRAPHIC DIVISION (48 CONTIGUOUS STATES)

	Week Ended			NMA CUMULATIVE JANUARY 1 to			52 Weeks Ended		
	9-Jun 2007 GWh Output	10-Jun 2006 GWh Output	% Increase Over Corresponding Week of 2006	9-Jun 2007 GWh Output	10-Jun 2006 GWh Output	% Increase Over Corresponding Week of 2006	9-Jun 2007 GWh Output	10-Jun 2006 GWh Output	% Increase Over Corresponding Week of 2006
New England	2,453	2,337	5.0%	58,036	56,304	3.1%	133,555	134,404	-0.6%
Mid-Atlantic	8,848	7,854	12.7%	194,869	185,267	5.2%	453,350	452,299	0.2%
Central Industrial	13,292	12,844	3.5%	309,829	295,406	4.9%	709,311	706,129	0.5%
West Central	6,453	6,915	-6.7%	148,246	145,879	1.6%	346,516	347,040	-0.2%
Southeast	21,761	20,785	4.7%	463,366	448,030	3.4%	1,087,426	1,078,539	0.8%
South Central	12,967	13,982	-7.3%	245,280	242,946	1.0%	600,707	597,555	0.5%
Rocky Mountain	5,274	5,755	-8.4%	107,812	104,146	3.5%	264,291	256,532	3.0%
Pacific Northwest	2,749	2,528	8.7%	71,711	68,098	5.3%	154,986	150,414	3.0%
Pacific Southwest	<u>5,155</u>	<u>5,485</u>	-6.0%	<u>123,186</u>	<u>120,925</u>	1.9%	<u>294,063</u>	<u>290,621</u>	1.2%
Total United States *	78,952	78,485	0.6%	1,722,335	1,667,001	3.3%	4,044,205	4,013,533	0.8%

Notes: EEI output data are an estimate of electricity load made available for distribution derived as weekly net generation + purchases from non-utilities + net imports - exports - sales for resale. It is not meant to be a measure of electricity generation for the U.S. EEI survey data represent the majority of national distribution (large utilities, large government power projects, some independent and large municipal power projects). The remaining segment of the industry (smaller producers) is estimated. Non-utility generation is captured via direct sales to utilities.

* Excludes Alaska and Hawaii

** Less than one-tenth of one percent

SOURCE: Edison Electric Institute (EEI), *Weekly Electric Output Report*.

AMERICAN IRON AND STEEL INSTITUTE
 1140 Connecticut Avenue, Suite 705
 Washington, D.C. 20036

June 12, 2007

ESTIMATED WEEKLY RAW STEEL* PRODUCTION

<u>Period</u>	<u>Thousand Net Tons</u>	<u>Percent Change from Previous Period</u>	<u>Percent Capability Utilization**</u>	<u>Production by District</u>		
				<u>Week Ending</u>		
				<u>Jun 9</u>	<u>Jun 2</u>	
<u>Week Ending</u>				North East Coast	136	131
				Pgh/Youngstown	228	224
				Lake Erie	117	109
				Detroit	119	121
				Indiana/Chicago	520	534
				Midwest	245	242
				Southern	583	635
				Western	<u>91</u>	<u>94</u>
				Total	2039	2090
<u>Year-to-Date+</u>						
June 9, 2007	2,039	-2.4	85.2			
June 9, 2006	2,207	-7.6	92.1			
June 2, 2007	2,090	0.6	87.4			
June 9, 2007	45,959	-7.1	84.6			
June 9, 2006	49,490	-	90.5			

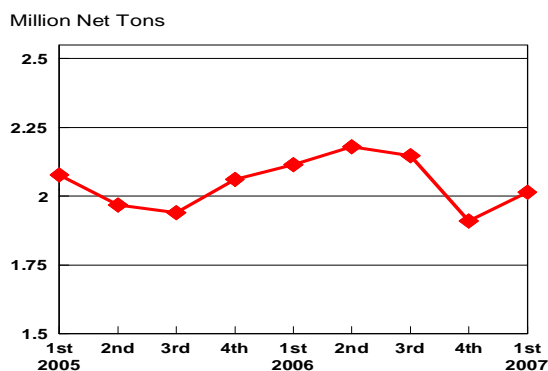
*Raw steel production tonnage included in this report is estimated based on a sampling of steel producers. Therefore, this report should be used primarily to assess production trends. The AISI production report "AIS 7," produced monthly and available by subscription, provides a more accurate summary of steel production based on data supplied by companies representing approximately 75% of U.S. production capacity.

+Includes revisions for previous months

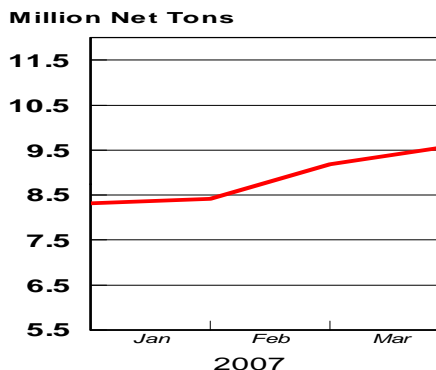
NOTE: Capability for the First Quarter 2007 is approximately 31.2 million net tons vs 30.5 million net tons for the same period last year, and 30.7 million tons for the fourth quarter of 2006.

Capability -	2003 approx.	2004	2005	2006	2007
	2.3 million tons/week	2.2	2.3	2.4	2.4

Average Weekly Raw Steel Production

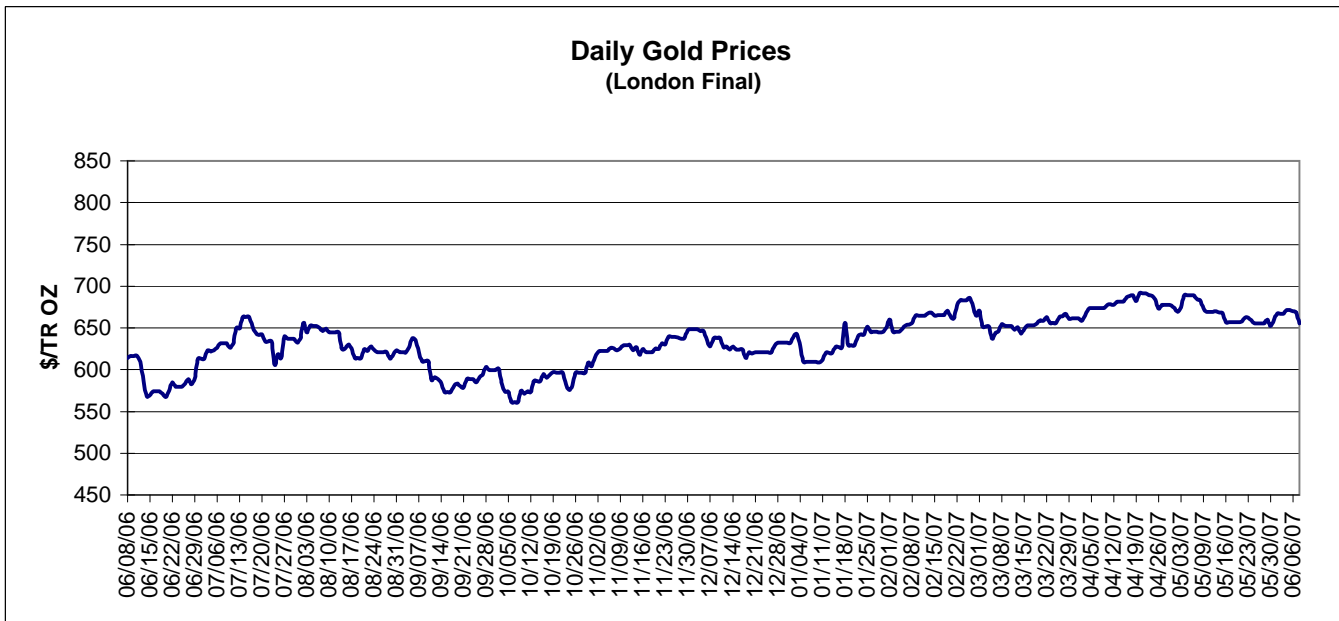
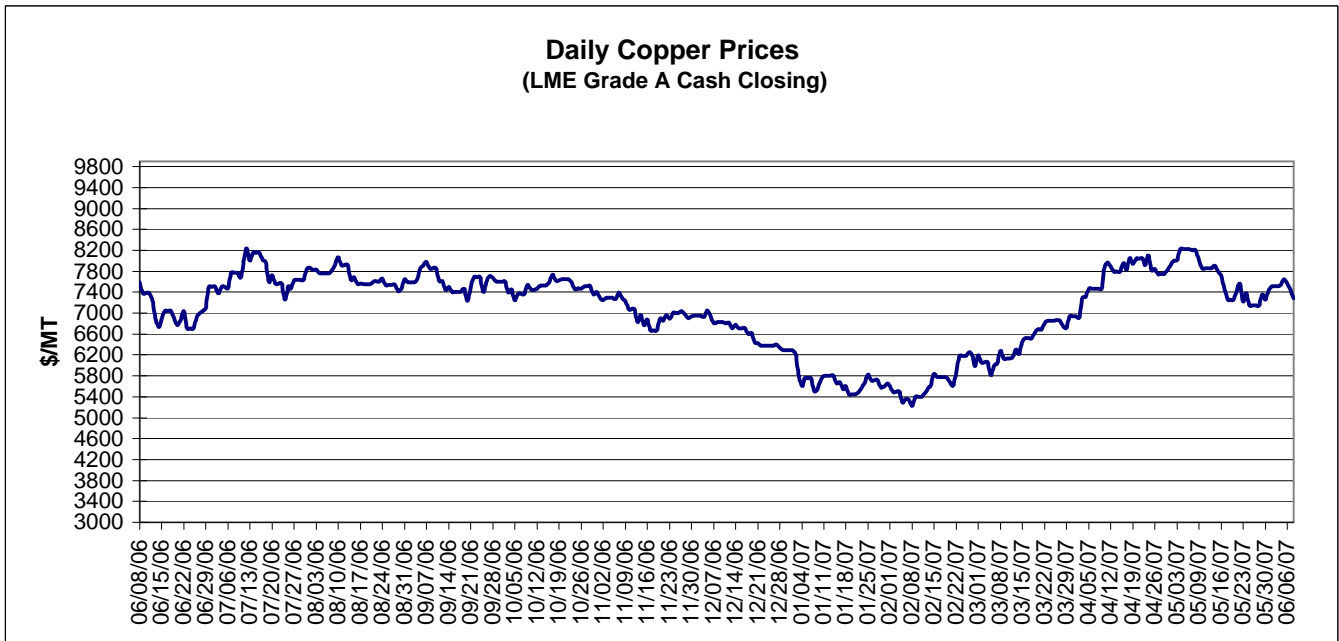


MONTHLY RAW STEEL PRODUCTION



*Steel in the first solid state after melting suitable for further processing or sale, including ingots, steel for castings and strand or pressure cast blooms, slabs, or other product forms.

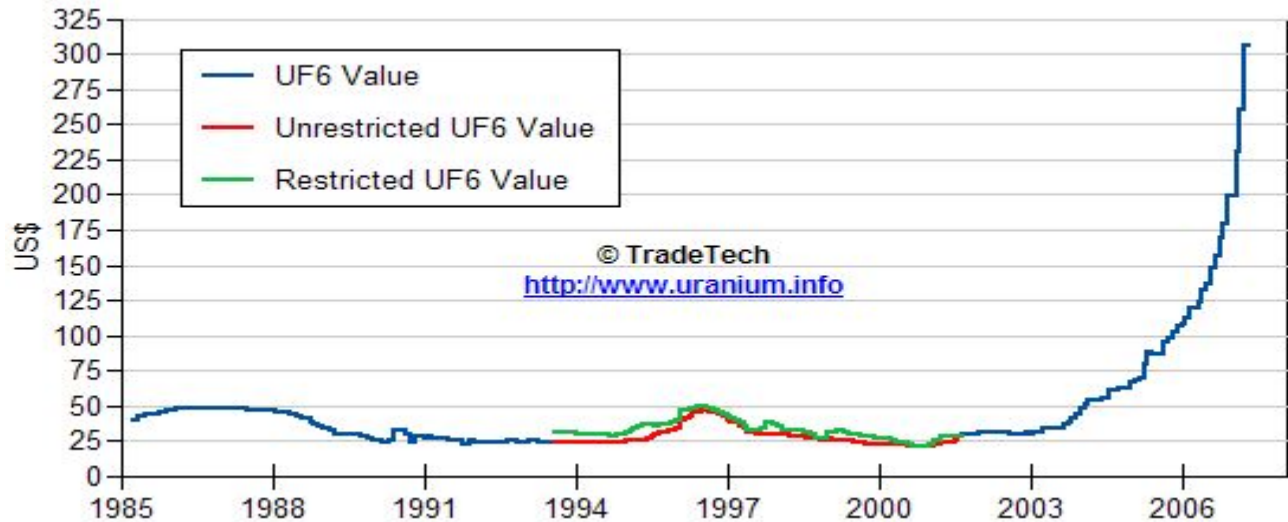
** Based on tonnage capability to produce raw steel for a sustained full order book.



Data reflect closings on weekends and holidays.

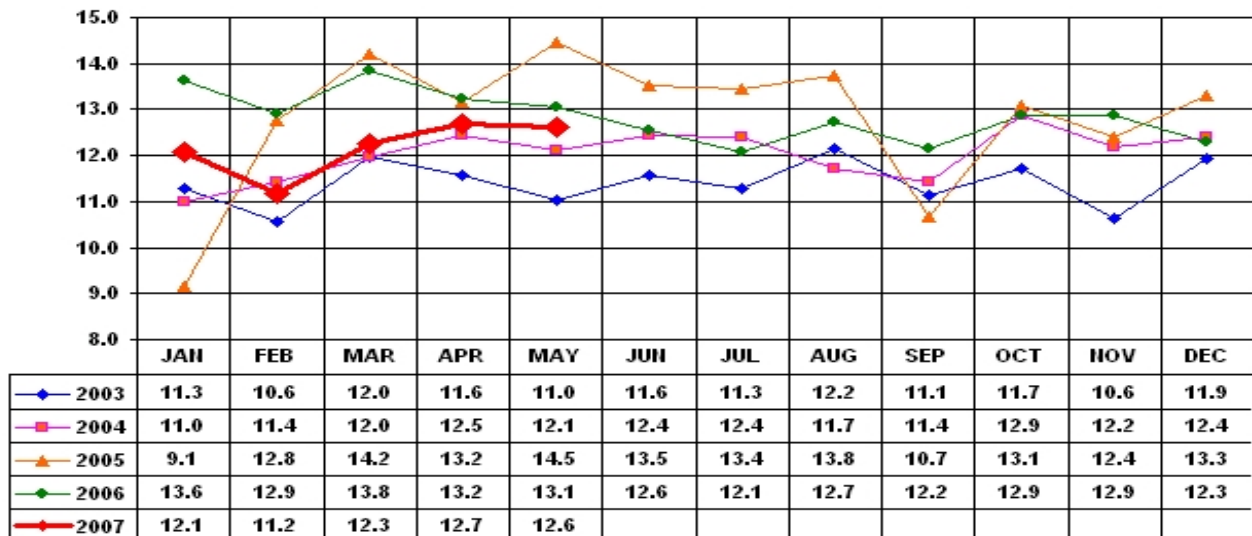
Source: Platts Metals Week

Trade Tech's Uranium (UF6) Monthly Spot Prices (US\$/kg as UF6)



Source: Trade Tech, Uranium Info Website – <http://www.uranium.info>

Coal and Coke Monthly Tonnage Indicator for Internal U.S. Waterways



Source: U.S. Army Corps of engineers, Waterborne Commerce Statistics Center