
National Mining Association

Weekly Statistical Summary

June 20, 2008 Edition
(Data for Week Ending June 14, 2008)

Prepared by
National Mining Association



Suite 500 East, 101 Constitution Avenue, NW
Washington, DC, 20001
Phone (202) 463-2600
Visit us at <http://www.nma.org>

NMA Weekly Statistical Summary

Vol. 46, No. 24
Dated 06/20/08

PRODUCTION, CONSUMPTION & TRADE						
	Week Ended			* Cumulative Jan 1 to		
	06/14/08	06/16/07	% Chng	06/14/08	06/14/07	% Chng
EIA Coal Production (000 Tons):						
Week Ended/Year to Date	21,250	22,745	-6.6%	527,703	521,263	1.2%
52 Weeks Ended	1,146,460	1,150,249	-0.3%			
* Due to leap year, 2008 cumulative reflects one extra day of tonnage.						
	May 08/07		% Chng	Jan - May 08/07		% Chng
Month Ended -- May	97,554	96,999	0.6%	490,862	475,947	3.1%
MONTH ENDED AND CUMULATIVE NUMBERS ARE PRELIMINARY AND SUBJECT TO CHANGE						
DOC Bituminous Coal Trade (000 Tons)						
	April 08/07		% Chng	Jan - Apr 08/07		% Chng
Exports:						
Metallurgical	4,300	2,405	78.8%	13,400	9,124	46.9%
Steam	3,621	2,415	49.9%	10,221	6,712	52.3%
Imports:	2,985	2,687	11.1%	10,626	11,473	-7.4%
	Week Ended			* Cumulative Jan 1 to		
	06/14/08	06/16/07	% Chng	06/14/08	06/16/07	% Chng
EEl Electric Output (Mil. Kwh)	87,195	81,410	7.1%	1,817,045	1,803,747	0.7%
AISI Raw Steel Output (000 Tons)	2,101	2,119	-0.8%	50,225	48,879	2.8%
EIA U.S. PETROLEUM DATA						
4-Week Averages						
000 Barrels per Day						
	Week Ending			Cumulative Daily Averages		
	06/13/08	06/13/07	% Chng	2008	2007	% Chng
PETROLEUM SUPPLY:						
Domestic Crude	5,132	5,197	-1.3	5,112	5,192	-1.5
Net Imports (Incl. SPR)	9,646	10,117	-4.7	9,707	9,997	-2.9
SPR Stocks W/D or Added	-75	-16	--	-49	-10	--
Other Stocks W/D or added	696	-293	--	-66	-237	--
Natural Gas Liquids Prod.	2,288	2,402	-4.7	2,277	2,352	-3.2



NMA

THE AMERICAN RESOURCE National Mining Association Web Site: [http:// www.nma.org](http://www.nma.org)

EIA Estimated Weekly U.S. Coal Production Overview (Thousand Short Tons)

Coal-Producing Region and State	Week Ended			Year To Date		Percent Change	52 Weeks Ended		Percent Change
	6/14/2008	6/7/2008	6/16/2007	6/14/2008	6/14/2007		6/14/2008	6/16/2007	
Alabama	372	376	382	9,832	8,999	9.3	20,271	18,677	8.5
Alaska	27	26	28	676	737	-8.3	1,257	1,504	-16.5
Arizona	152	112	168	3,191	3,711	-14.0	7,429	8,289	-10.4
Arkansas	1	2	2	32	33	-2.8	81	50	64.4
Colorado	782	707	839	16,174	16,277	-0.6	36,060	36,619	-1.5
Illinois	576	639	731	14,802	16,904	-12.4	30,269	34,974	-13.5
Indiana	676	683	721	16,326	15,894	2.7	35,276	34,985	0.8
Kansas	6	10	10	189	202	-6.3	406	490	-17.2
Kentucky Total	2,295	2,288	2,411	55,460	53,886	2.9	116,279	117,331	-0.9
Eastern	1,732	1,664	1,856	41,226	40,843	0.9	86,969	89,731	-3.1
Western	563	625	555	14,234	13,043	9.1	29,310	27,600	6.2
Louisiana	99	44	59	1,722	998	72.6	3,771	3,392	11.2
Maryland	40	49	45	1,062	1,048	1.4	2,300	3,479	-33.9
Mississippi	61	45	71	1,511	1,620	-6.7	3,417	3,680	-7.1
Missouri	4	5	5	107	107	0.2	235	248	-5.2
Montana	810	862	827	20,838	18,218	14.4	45,785	41,604	10.1
New Mexico	479	465	619	9,815	11,658	-15.8	22,477	25,798	-12.9
North Dakota	545	532	563	12,975	13,360	-2.9	29,108	30,348	-4.1
Ohio	451	468	426	11,281	9,855	14.5	23,890	21,896	9.1
Oklahoma	35	36	35	795	766	3.8	1,670	1,772	-5.8
Pennsylvania Total	1,231	1,277	1,382	31,332	31,285	0.2	64,949	65,729	-1.2
Anthracite	23	39	32	802	727	10.4	1,626	1,551	4.8
Bituminous	1,207	1,239	1,350	30,530	30,558	-0.1	63,324	64,178	-1.3
Tennessee	51	50	52	1,192	1,228	-2.9	2,598	2,692	-3.5
Texas	753	831	849	18,466	18,261	1.1	41,918	43,543	-3.7
Utah	457	469	528	11,783	11,350	3.8	24,626	25,089	-1.8
Virginia	463	458	589	10,764	13,138	-18.1	22,879	28,947	-21.0
Washington	--	--	--	--	--	--	0	1,176	-100.0
West Virginia Total	3,031	3,013	3,210	73,140	71,926	1.7	153,774	151,787	1.3
Northern	786	916	879	20,345	20,509	-0.8	41,607	41,833	-0.5
Southern	2,244	2,097	2,330	52,794	51,417	2.7	112,167	109,955	2.0
Wyoming	7,855	8,335	8,195	204,238	199,804	2.2	455,733	446,146	2.1
Appalachian Total	7,370	7,356	7,942	179,829	178,321	0.8	377,630	382,938	-1.4
Interior Total	2,774	2,919	3,036	68,185	67,827	0.5	146,355	150,736	-2.9
Western Total	11,106	11,509	11,767	279,689	275,115	1.7	622,475	616,574	1.0
East of Miss. River	9,246	9,348	10,019	226,702	225,782	0.4	475,904	484,178	-1.7
West of Miss. River	12,004	12,437	12,726	301,001	295,481	1.9	670,556	666,070	0.7
Bituminous and Lignite	21,227	21,746	22,713	526,901	520,537	1.2	1,144,834	1,148,697	-0.3
Anthracite	23	39	32	802	727	10.4	1,626	1,551	4.8
U.S. Total	21,250	21,784	22,745	527,703	521,263	1.2	1,146,460	1,150,248	-0.3
Railroad Cars Loaded	137,127	141,482	148,397	3,494,218	3,378,046	3.4	7,520,204	7,401,231	1.6

Source: Energy Information Administration



Volume 76 No. 24

OUTPUT FOR WEEK ENDED - Jun 14, 2008

Jun 18, 2008

The net available amount of electric energy distributed by the Total Electric Utility Industry+ for the week ended Saturday, Jun 14, 2008 was 87,195 gigawatthours (GWh), according to the Edison Electric Institute. This is equivalent to 191 on the weekly electric output index.

WEEKLY ELECTRIC OUTPUT BY GEOGRAPHIC DIVISION

(48 CONTIGUOUS STATES)

	Week Ended June 14		52 Weeks Ended June 14	
	GWh Output	% Increase Over Corresponding Week of 2007	GWh Output	% Increase Over Corresponding Period of 2007
New England	2,996	22.0	133,256	-0.2
Mid-Atlantic	10,814	26.8	456,131	0.6
Central Industrial	14,856	5.5	721,031	1.5
West Central	6,755	-9.4	352,120	1.5
Southeast	23,434	9.7	1,112,834	2.3
South Central	14,346	8.5	605,811	1.0
Rocky Mountain	5,309	-8.0	277,446	4.8
Pacific Northwest	2,931	10.4	166,317	7.2
Pacific Southwest	5,754	-2.0	288,965	-1.8
Total United States	87,195	7.1	4,113,911	1.7

WEEKLY ELECTRIC OUTPUT IN PREVIOUS WEEKS--GWh

Week Ended	2008	Week Ended	2007	% Inc. (08/07)	52 Weeks Ended	2008	% Inc. (08/07)
May 24	73,798	May 26	73,946	-0.2	May 24	4,108,015	1.5
May 31	73,959	Jun 02	77,036	-4.0	May 31	4,104,937	1.5
Jun 07	82,141	Jun 09	78,952	4.0	Jun 07	4,108,126	1.6
Jun 14	87,195	Jun 16	81,410	7.1	Jun 14	4,113,911	1.7
Jun 14	1,817,045	Jun 16	1,803,747	0.7	YEAR TO DATE, FIRST 24 WEEKS		

WEEKLY ELECTRIC OUTPUT INDEX--TOTAL U.S.*

SEASONALLY ADJUSTED 1982 = 100

Week Ended	2008	Week Ended	2007	Week Ended	2006
May 24	179	May 26	183	May 27	183
May 31	177	Jun 02	190	Jun 03	196
Jun 07	188	Jun 09	r/ 185	Jun 10	187
Jun 14	191	Jun 16	181	Jun 17	181

* Excludes Alaska and Hawaii. r Revised.

+ Includes investor-owned companies, cooperatives and government-owned utilities.

Copyright © 2008 Edison Electric Institute. All rights reserved.

WEEKLY ELECTRIC OUTPUT BY GEOGRAPHIC DIVISION (48 CONTIGUOUS STATES)

	Week Ended			NMA CUMULATIVE JANUARY WEEK ONE TO			52 Weeks Ended		
	14-Jun 2008 GWh Output	16-Jun 2007 GWh Output	% Increase Over Corresponding Week of 2007	14-Jun 2008 GWh Output	16-Jun 2007 GWh Output	% Increase Over Corresponding Week of 2007	14-Jun 2008 GWh Output	16-Jun 2007 GWh Output	% Increase Over Corresponding Week of 2007
New England	2,996	2,455	22.0%	59,301	60,491	-2.0%	133,256	133,485	-0.2%
Mid-Atlantic	10,814	8,527	26.8%	200,858	203,396	-1.2%	456,131	453,617	0.6%
Central Industrial	14,856	14,078	5.5%	322,800	323,907	-0.3%	721,031	710,425	1.5%
West Central	6,755	7,459	-9.4%	155,611	155,705	-0.1%	352,120	347,015	1.5%
Southeast	23,434	21,366	9.7%	490,906	484,732	1.3%	1,112,834	1,087,287	2.3%
South Central	14,346	13,228	8.5%	266,184	258,508	3.0%	605,811	599,672	1.0%
Rocky Mountain	5,309	5,769	-8.0%	113,599	113,581	0.0%	277,446	264,758	4.8%
Pacific Northwest	2,931	2,655	10.4%	81,603	74,366	9.7%	166,317	155,146	7.2%
Pacific Southwest	5,754	5,873	-2.0%	126,184	129,059	-2.2%	288,965	294,324	-1.8%
Total United States *	87,195	81,410	7.1%	1,817,046	1,803,745	0.7%	4,113,911	4,045,729	1.7%

Notes: EEI output data are an estimate of electricity load made available for distribution derived as weekly net generation + purchases from non-utilities + net imports - exports - sales for resale. It is not meant to be a measure of electricity generation for the U.S. EEI survey data represent the majority of national distribution (large utilities, large government power projects, some independent and large municipal power projects). The remaining segment of the industry (smaller producers) is estimated. Non-utility generation is captured via direct sales to utilities.

* Excludes Alaska and Hawaii

** Less than one-tenth of one percent

SOURCE: Edison Electric Institute (EEI), *Weekly Electric Output Report*.

AMERICAN IRON AND STEEL INSTITUTE
 1140 Connecticut Avenue, Suite 705
 Washington, D.C. 20036

June 16, 2008

ESTIMATED WEEKLY RAW STEEL* PRODUCTION

<u>Period</u>	<u>Thousand Net Tons</u>	<u>Percent Change from Previous Period</u>	<u>Percent Capability Utilization**</u>	<u>Production by District</u>		
				<u>Week Ending</u>		
				<u>June 14</u>	<u>June 7</u>	
<u>Week Ending</u>				North East Coast	173	182
June 14, 2008	2,101	-1.5	88.1	Pgh/Youngstown	211	213
June 14, 2007	2,119	-0.8	88.6	Lake Erie	89	86
June 7, 2008	2,134	0.9	89.4	Detroit	108	105
				Indiana/Chicago	483	518
				Midwest	257	262
				Southern	686	671
				Western	94	96
				Total	2,101	2,133
<u>Year-to-Date+</u>						
June 14, 2008	50,225	2.7	88.8			
June 14, 2007	48,879	-	85.7			

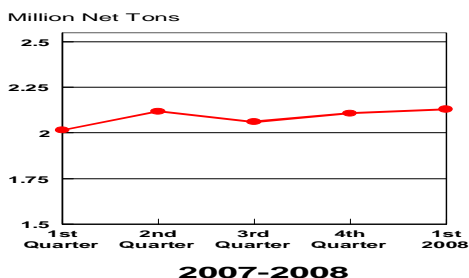
*Raw steel production tonnage included in this report is estimated based on a sampling of steel producers. Therefore, this report should be used primarily to assess production trends. The AISI production report "AIS 7," produced monthly and available by subscription, provides a more accurate summary of steel production based on data supplied by companies representing approximately 75% of U.S. production capacity.

+Includes revisions for previous months

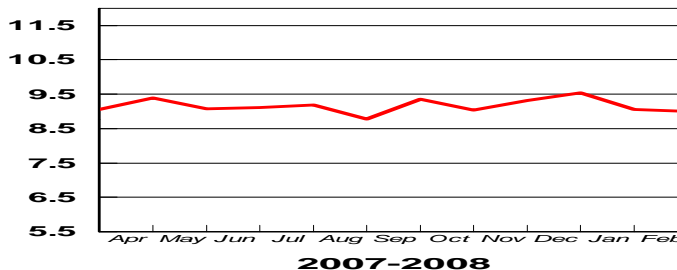
NOTE: Capability for the Fourth Quarter 2007 is approximately 31.3 million net tons vs 30.7 million net tons for the same period last year, and 30.1 million tons for the third quarter of 2007.

Capability -	2003 approx.	2.3 million tons/week
	2004	2.2
	2005	2.3
	2006	2.4
	2007	2.4

Average Weekly Raw Steel Production

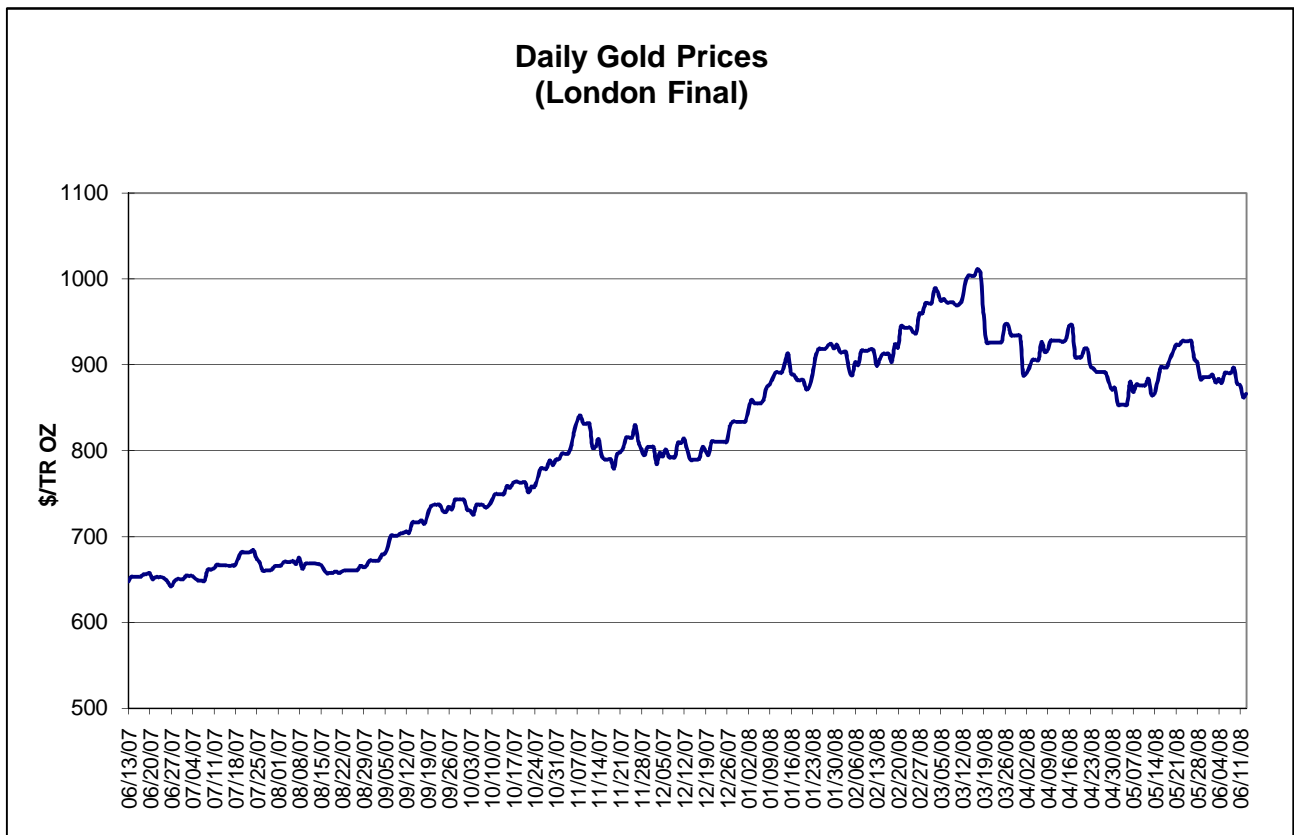
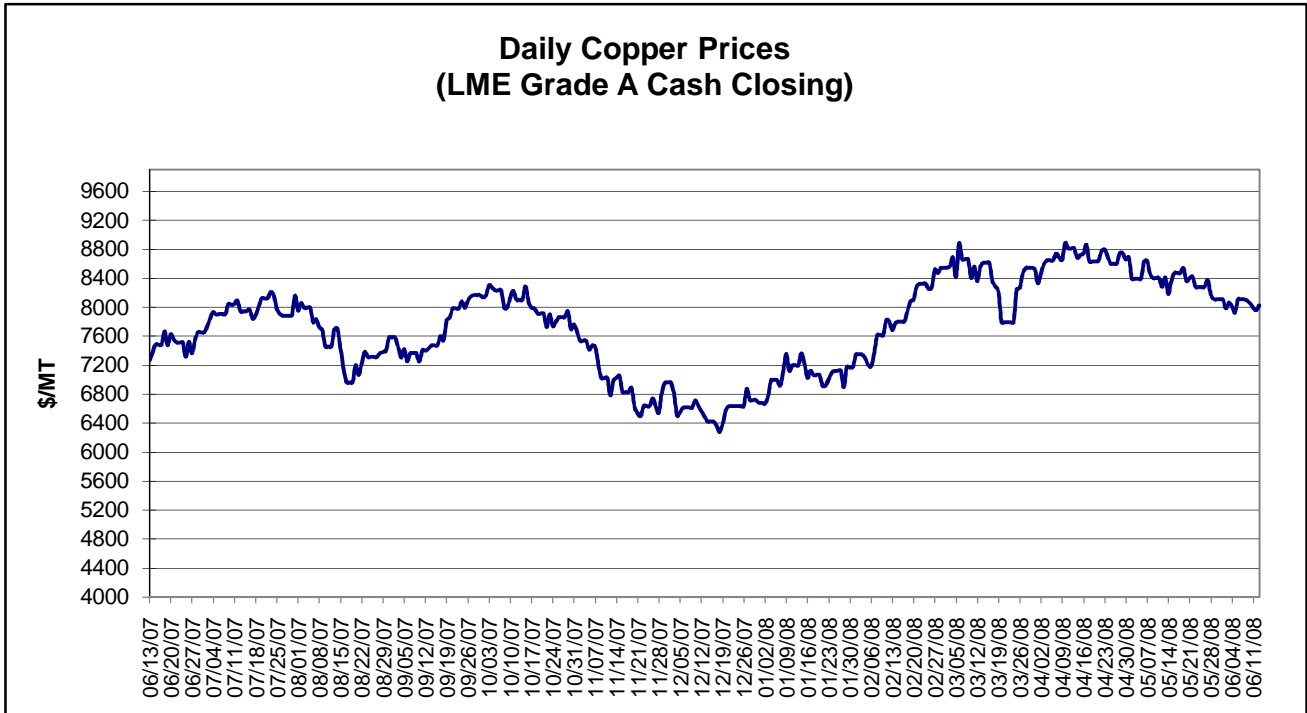


Monthly Raw Steel Production
 Million Net Tons



*Steel in the first solid state after melting suitable for further processing or sale, including ingots, steel for castings and strand or pressure cast blooms, slabs, or other product forms.

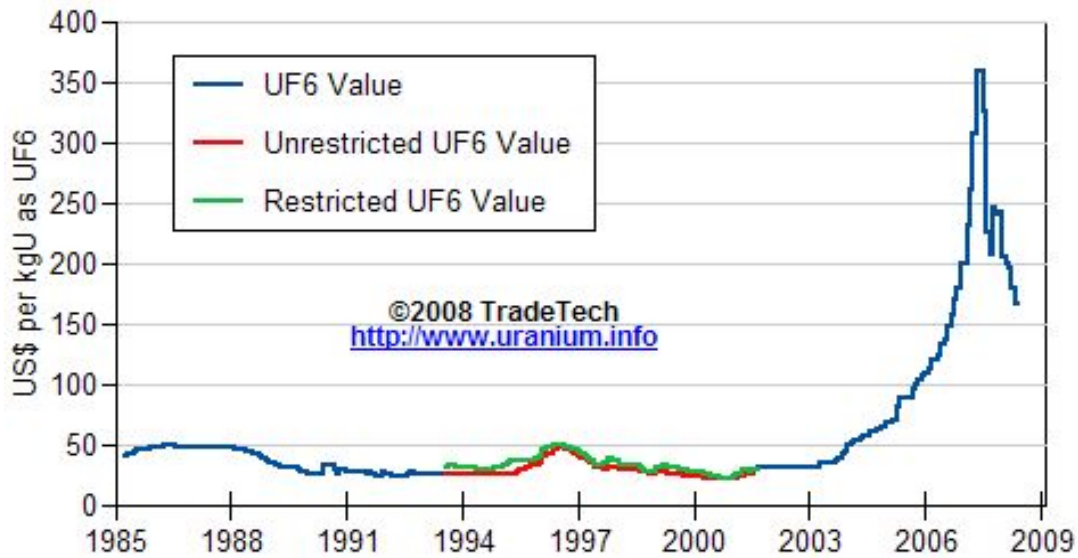
** Based on tonnage capability to produce raw steel for a sustained full order book.



Data reflect closings on weekends and holidays.

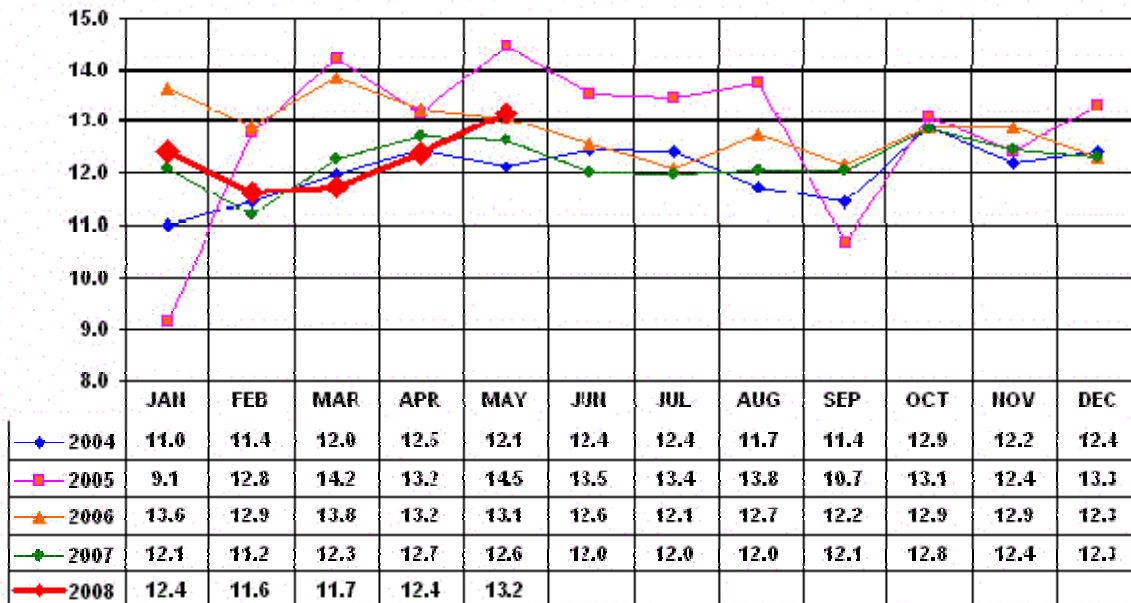
Source: Platts Metals Week

Trade Tech's Uranium (UF6) Monthly Spot Prices (US\$/kg as UF6)



Source: Trade Tech, Uranium Info Website – <http://www.uranium.info>

Coal and Coke Monthly Tonnage Indicator for Internal U.S. Waterways



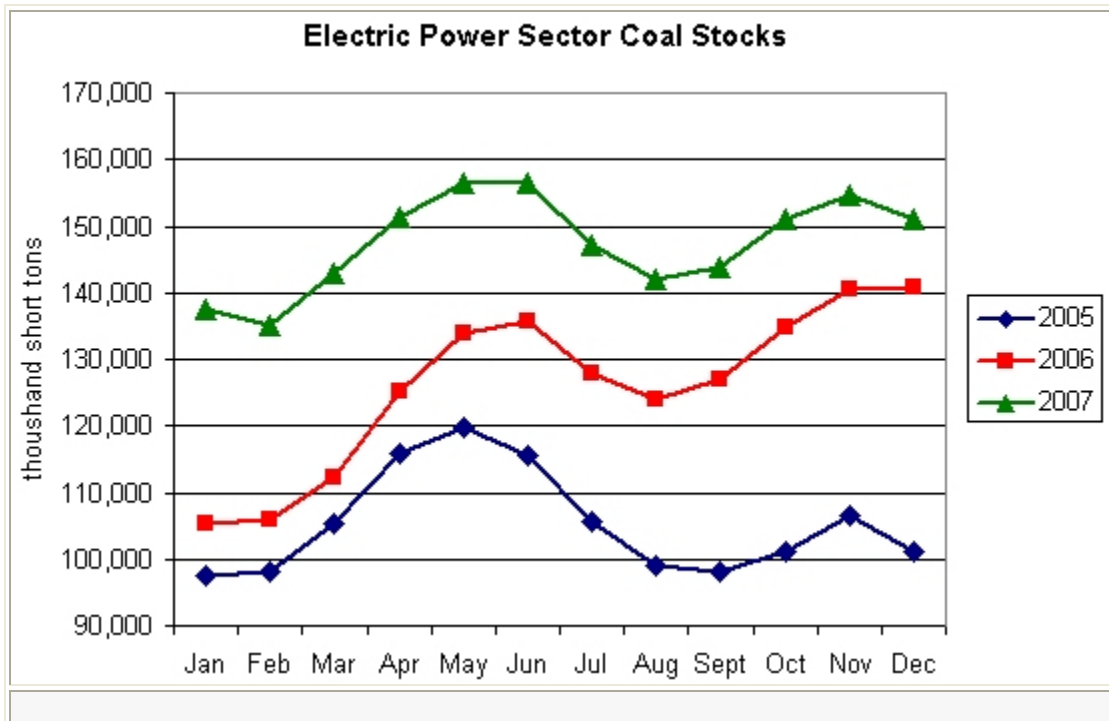
Source: U.S. Army Corps of Engineers, Waterborne Commerce Statistics Center

EIA Weekly Spot Coal Prices

The following average spot coal prices appear in the graphic below, for the previous and most recent weeks: (Dollars per Short Ton)

Week Ended	Central Appalachia 12,500 Btu, 1.2 SO2	Northern Appalachia 13,000 Btu, <3.0 SO2	Illinois Basin 11,800 Btu, 5.0 SO2	Powder River Basin 8,800 Btu, 0.8 SO2	Uinta Basin 11,700 Btu, 0.8 SO2
09-May-08	\$96.75	\$105.00	\$58.00	\$14.00	\$44.00
16-May-08	\$100.90	\$105.00	\$58.00	\$14.00	\$44.00
23-May-08	\$104.25	\$105.00	\$65.00	\$14.15	\$44.00
30-May-08	\$108.25	\$105.00	\$65.00	\$14.10	\$44.00
06-June-08	\$108.25	\$105.00	\$65.00	\$13.30	\$44.00
13-June-08	\$117.60	\$108.50	\$65.00	\$13.30	\$54.00

Source: Energy Information Administration (from Platts *Coal Outlook*, "Weekly Price Survey")



Source: Energy Information Administration

USGS Production of Selected Mineral Commodities	2008 First Quarter	2007 First Quarter	Percent Change
Aluminum, secondary (000 Mt.)	240.0	243.0	-1%
Cement (Mil. Mt.)	17.2	18.0	-4%
Gypsum (Mil. Mt.)	4.9	5.7	-14%
Iron Ore (Mil. Mt.)	12.9	11.4	13%
Phosphate rock (Mil. Mt.)	7.6	7.1	7%
Sand & gravel, construction (Mil. Mt.)	184.0	194.0	-5%
Soda ash (Mil. Mt.)	2.8	2.7	4%
Stone, crushed (Mil. Mt.)	280.0	263.0	6%
Zinc (000 Mt.)	207.0	181.0	14%

Source: U.S. Geological Survey, Mineral Industry Surveys, *U.S. Production of Selected Mineral Commodities in the First Quarter 2008*