
National Mining Association

Weekly Statistical Summary

June 22, 2007 Edition
(Data for Week Ending June 16, 2007)

Prepared by
National Mining Association



Suite 500 East, 101 Constitution Avenue, NW
Washington, DC, 20001
Phone (202) 463-2600
Visit us at <http://www.nma.org>

NMA Weekly Statistical Summary

Vol. 45, No. 24
Dated 06/22/07

PRODUCTION, CONSUMPTION & TRADE						
	Week Ended			Cumulative Jan 1 to		
	06/16/07	06/17/06	% Chng	06/16/07	06/17/06	% Chng
EIA Coal Production (000 Tons):						
Week Ended/Year to Date	22,572	22,142	1.9%	523,846	537,591	-2.6%
52 Weeks Ended	1,146,032	1,144,130	0.2%			
Month Ended -- May						
	May 07/06		% Chng	Jan - May 07/06		% Chng
	96,231	99,827	-3.6%	473,733	484,357	-2.2%
MONTH ENDED AND CUMULATIVE NUMBERS ARE PRELIMINARY AND SUBJECT TO CHANGE						
DOC Bituminous Coal Trade (000 Tons)						
Exports:	April 07/06			Jan - Apr 07/06		
			% Chng			% Chng
Metallurgical	2,405	2,047	17.5%	9,124	8,612	5.9%
Steam	2,415	1,401	72.4%	6,712	5,331	25.9%
Imports:	2,687	3,030	-11.3%	11,473	11,987	-4.3%
EEI Electric Output (Mil. Kwh)						
	Week Ended			Cumulative Jan 1 to		
	06/16/07	06/17/06	% Chng	06/16/07	06/17/06	% Chng
	81,410	79,886	1.9%	1,803,747	1,746,885	3.3%
AISI Raw Steel Output (000 Tons)						
	2,084	2,207	-5.6%	48,043	51,697	-7.1%
EIA U.S. PETROLEUM DATA						
4-Week Averages 000 Barrels per Day						
PETROLEUM SUPPLY:						
	Week Ending			Cumulative Daily Averages		
	06/15/07	06/15/06	% Chng	2007	2006	% Chng
Domestic Crude	5,148	5,160	-0.2	5,163	5,070	1.8
Net Imports (Incl. SPR)	10,275	10,423	-1.4	10,062	9,932	1.3
SPR Stocks W/D or Added	-21	1	--	-10	-22	--
Other Stocks W/D or added	-184	187	--	-233	-90	--
Natural Gas Liquids Prod.	2,391	2,246	6.5	2,308	2,153	7.2



NMA
THE AMERICAN RESOURCE

National Mining Association Web Site: [http:// www.nma.org](http://www.nma.org)

EIA Estimated Weekly U.S. Coal Production Overview (Thousand Short Tons)

Coal-Producing Region and State	Week Ended			Year To Date			52 Weeks Ended		
	6/16/2007	6/9/2007	6/17/2006	6/16/2007	6/16/2006	Percent Change	6/16/2007	6/17/2006	Percent Change
Alabama	417	387	315	9,399	9,420	-0.2	19,000	20,135	-5.6
Alaska	28	26	29	743	663	11.9	1,504	1,252	20.2
Arizona	161	149	185	3,669	3,672	-0.1	8,213	9,855	-16.7
Arkansas	1	1	1	24	6	288.2	41	8	417.0
Colorado	796	739	575	16,063	16,139	-0.5	36,185	36,411	-0.6
Illinois	672	624	583	16,386	14,799	10.7	33,754	31,199	8.2
Indiana	741	688	663	16,567	16,483	0.5	35,803	34,975	2.4
Kansas	9	9	10	202	139	45.0	489	236	106.8
Kentucky Total	2,412	2,239	2,396	54,036	57,825	-6.6	116,492	121,489	-4.1
Eastern	1,810	1,680	1,906	40,393	45,008	-10.3	88,417	94,415	-6.4
Western	602	559	490	13,643	12,817	6.4	28,075	27,074	3.7
Louisiana	79	75	99	1,122	1,725	-34.9	3,501	4,089	-14.4
Maryland	108	100	106	1,695	2,631	-35.6	4,116	5,306	-22.4
Mississippi	73	85	90	1,662	1,747	-4.9	3,703	3,684	0.5
Missouri	6	6	9	123	254	-51.7	263	593	-55.6
Montana	840	780	804	18,577	18,565	0.1	41,738	40,930	2.0
New Mexico	524	487	421	10,827	11,895	-9.0	24,836	27,934	-11.1
North Dakota	548	509	500	13,318	13,536	-1.6	30,193	30,152	0.1
Ohio	498	462	385	10,668	10,762	-0.9	22,614	24,104	-6.2
Oklahoma	42	39	38	841	999	-15.8	1,840	2,001	-8.0
Pennsylvania Total	1,276	1,185	1,324	30,444	31,968	-4.8	64,542	68,041	-5.1
Anthracite	29	27	26	695	703	-1.2	1,505	1,633	-7.8
Bituminous	1,248	1,158	1,298	29,750	31,265	-4.8	63,036	66,409	-5.1
Tennessee	59	55	47	1,309	1,350	-3.0	2,763	3,059	-9.7
Texas	957	888	778	19,596	20,400	-3.9	44,643	45,913	-2.8
Utah	485	450	519	11,023	12,380	-11.0	24,648	25,529	-3.4
Virginia	599	556	584	13,339	14,173	-5.9	29,012	28,856	0.5
Washington	0	0	39	0	1,403	-100.0	1,176	4,173	-71.8
West Virginia Total	3,081	2,860	2,942	71,559	73,102	-2.1	150,233	154,428	-2.7
Northern	954	886	859	21,698	21,242	2.1	43,124	44,020	-2.0
Southern	2,127	1,975	2,082	49,861	51,861	-3.9	107,109	110,408	-3.0
Wyoming	8,159	7,931	8,698	200,656	201,554	-0.4	444,729	419,778	5.9
Appalachian Total	7,848	7,285	7,610	178,805	188,414	-5.1	380,697	398,344	-4.4
Interior Total	3,182	2,973	2,761	70,166	69,370	1.1	152,112	149,772	1.6
Western Total	11,541	11,070	11,771	274,875	279,808	-1.8	613,223	596,014	2.9
East of Miss. River	9,936	9,240	9,436	227,062	234,259	-3.1	482,032	495,276	-2.7
West of Miss. River	12,636	12,088	12,706	296,784	303,331	-2.2	664,000	648,854	2.3
Bituminous and Lignite	22,543	21,302	22,115	523,152	536,888	-2.6	1,144,526	1,142,497	0.2
Anthracite	29	27	26	695	703	-1.2	1,505	1,633	-7.8
U.S. Total	22,572	21,329	22,142	523,846	537,591	-2.6	1,146,032	1,144,130	0.2
Railroad Cars Loaded	148,397	137,657	147,390	3,378,046	3,432,172	-1.6	7,401,231	7,265,301	1.9

Source: Energy Information Administration



Volume 75 No. 24

OUTPUT FOR WEEK ENDED - Jun 16, 2007

Jun 20, 2007

The net available amount of electric energy distributed by the Total Electric Utility Industry+ for the week ended Saturday, Jun 16, 2007 was 81,410 gigawatthours (GWh), according to the Edison Electric Institute. This is equivalent to 181 on the weekly electric output index.

WEEKLY ELECTRIC OUTPUT BY GEOGRAPHIC DIVISION
(48 CONTIGUOUS STATES)

	Week Ended June 16		52 Weeks Ended June 16	
	GWh Output	% Increase Over Corresponding Week of 2006	GWh Output	% Increase Over Corresponding Period of 2006
New England	2,455	-2.8	133,485	-0.5
Mid-Atlantic	8,527	3.2	453,617	0.6
Central Industrial	14,078	8.6	710,425	0.7
West Central	7,459	7.2	347,015	0.0
Southeast	21,366	-0.6	1,087,287	0.9
South Central	13,228	-7.3	599,672	0.3
Rocky Mountain	5,769	8.8	264,758	3.1
Pacific Northwest	2,655	6.4	155,146	3.1
Pacific Southwest	5,873	4.6	294,324	1.2
Total United States	81,410	1.9	4,045,729	0.9

WEEKLY ELECTRIC OUTPUT IN PREVIOUS WEEKS--GWh

Week Ended	2007	Week Ended	2006	% Inc. (07/06)	52 Weeks Ended	2007	% Inc. (07/06)
May 26	73,946	May 27	73,935	0.0	May 26	4,045,876	1.0
Jun 02	77,036	Jun 03	79,174	-2.7	Jun 02	4,043,738	0.7
Jun 09	78,952	Jun 10	78,485	0.6	Jun 09	4,044,205	0.8
Jun 16	81,410	Jun 17	79,886	1.9	Jun 16	4,045,729	0.9
Jun 16	1,803,747	Jun 17	1,746,885	3.3	YEAR TO DATE, FIRST 24 WEEKS		

WEEKLY ELECTRIC OUTPUT INDEX--TOTAL U.S.*
SEASONALLY ADJUSTED 1982 = 100

Week Ended	2007	Week Ended	2006	Week Ended	2005
May 26	183	May 27	183	May 28	181
Jun 02	190	Jun 03	196	Jun 04	166
Jun 09	194	Jun 10	187	Jun 11	188
Jun 16	181	Jun 17	181	Jun 18	184

* Excludes Alaska and Hawaii

+ Includes investor-owned companies, cooperatives and government-owned utilities.

Copyright © 2007 Edison Electric Institute. All rights reserved.

WEEKLY ELECTRIC OUTPUT BY GEOGRAPHIC DIVISION (48 CONTIGUOUS STATES)

	Week Ended			NMA CUMULATIVE JANUARY 1 to			52 Weeks Ended		
	16-Jun 2007 GWh Output	17-Jun 2006 GWh Output	% Increase Over Corresponding Week of 2006	16-Jun 2007 GWh Output	17-Jun 2006 GWh Output	% Increase Over Corresponding Week of 2006	16-Jun 2007 GWh Output	17-Jun 2006 GWh Output	% Increase Over Corresponding Week of 2006
New England	2,455	2,526	-2.8%	60,491	58,830	2.8%	133,485	134,194	-0.5%
Mid-Atlantic	8,527	8,260	3.2%	203,396	193,527	5.1%	453,617	450,716	0.6%
Central Industrial	14,078	12,963	8.6%	323,907	308,369	5.0%	710,425	705,539	0.7%
West Central	7,459	6,960	7.2%	155,705	152,839	1.9%	347,015	347,045	0.0%
Southeast	21,366	21,505	-0.6%	484,732	469,535	3.2%	1,087,287	1,077,342	0.9%
South Central	13,228	14,262	-7.3%	258,508	257,208	0.5%	599,672	597,620	0.3%
Rocky Mountain	5,769	5,302	8.8%	113,581	109,448	3.8%	264,758	256,893	3.1%
Pacific Northwest	2,655	2,496	6.4%	74,366	70,594	5.3%	155,146	150,435	3.1%
Pacific Southwest	<u>5,873</u>	<u>5,612</u>	4.7%	<u>129,059</u>	<u>126,537</u>	2.0%	<u>294,324</u>	<u>290,835</u>	1.2%
Total United States *	81,410	79,886	1.9%	1,803,745	1,746,887	3.3%	4,045,729	4,010,619	0.9%

Notes: EEI output data are an estimate of electricity load made available for distribution derived as weekly net generation + purchases from non-utilities + net imports - exports - sales for resale. It is not meant to be a measure of electricity generation for the U.S. EEI survey data represent the majority of national distribution (large utilities, large government power projects, some independent and large municipal power projects). The remaining segment of the industry (smaller producers) is estimated. Non-utility generation is captured via direct sales to utilities.

* Excludes Alaska and Hawaii

** Less than one-tenth of one percent

SOURCE: Edison Electric Institute (EEI), *Weekly Electric Output Report*.

AMERICAN IRON AND STEEL INSTITUTE
 1140 Connecticut Avenue, Suite 705
 Washington, D.C. 20036

June 18, 2007

ESTIMATED WEEKLY RAW STEEL* PRODUCTION

<u>Period</u>	Thousand <u>Net Tons</u>	Percent Change from Previous <u>Period</u>	Percent Capability <u>Utilization**</u>	<u>Production by District</u>	
				<u>Week Ending</u>	
				<u>Jun 16</u>	<u>Jun 9</u>
<u>Week Ending</u>					
June 16, 2007	2,084	2.2	87.1	139	136
June 16, 2006	2,207	-5.5	92.1	208	228
June 9, 2007	2,039	-2.4	85.2	105	117
				122	119
				522	520
				251	245
				650	583
				87	91
				2084	2039
<u>Year-to-Date+</u>					
June 16, 2007	48,043	-7.0	84.7		
June 16, 2006	51,697	-	90.5		

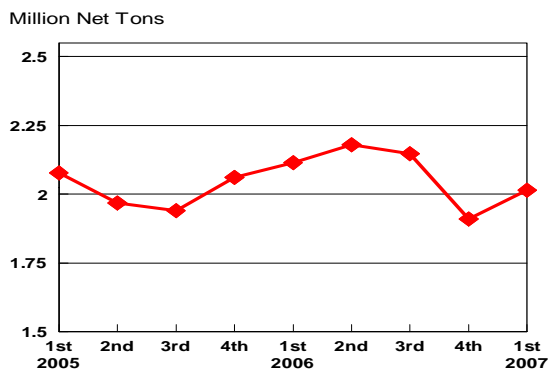
*Raw steel production tonnage included in this report is estimated based on a sampling of steel producers. Therefore, this report should be used primarily to assess production trends. The AISI production report "AIS 7," produced monthly and available by subscription, provides a more accurate summary of steel production based on data supplied by companies representing approximately 75% of U.S. production capacity.

+Includes revisions for previous months

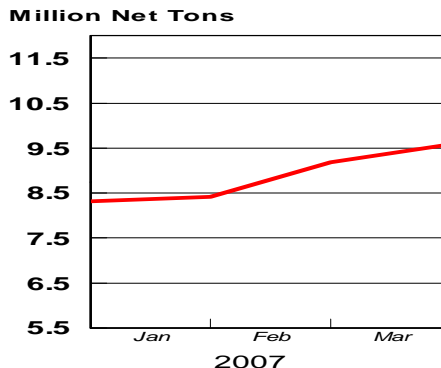
NOTE: Capability for the First Quarter 2007 is approximately 31.2 million net tons vs 30.5 million net tons for the same period last year, and 30.7 million tons for the fourth quarter of 2006.

Capability -	2003 approx.	2.3 million tons/week
	2004	2.2
	2005	2.3
	2006	2.4
	2007	2.4

Average Weekly Raw Steel Production

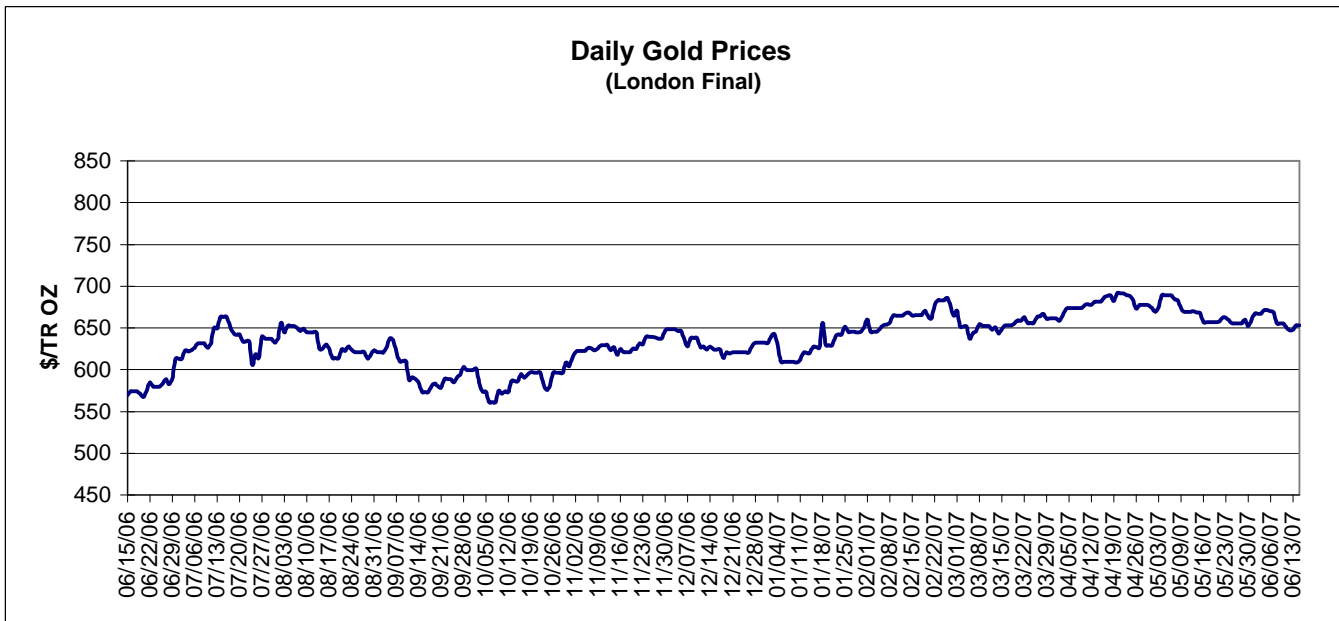
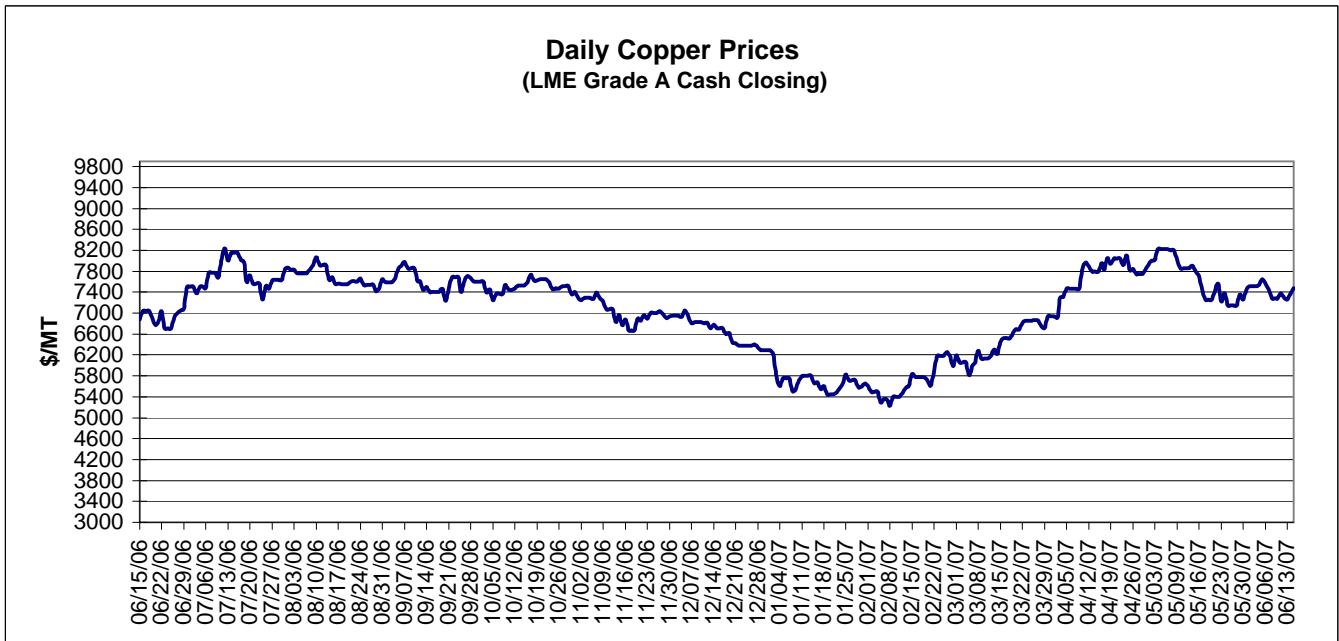


MONTHLY RAW STEEL PRODUCTION



*Steel in the first solid state after melting suitable for further processing or sale, including ingots, steel for castings and strand or pressure cast blooms, slabs, or other product forms.

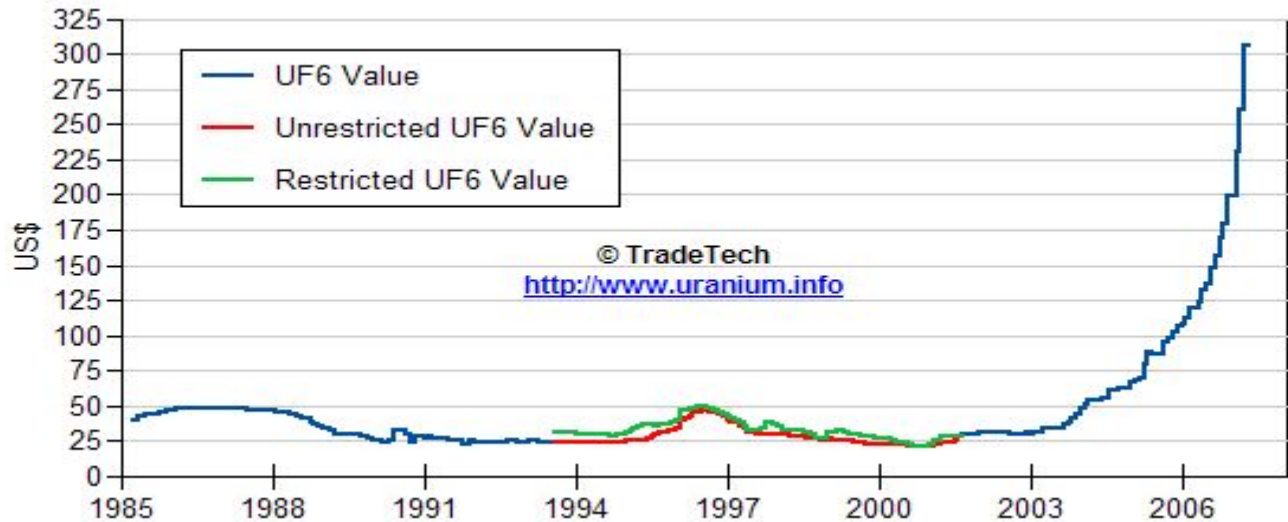
** Based on tonnage capability to produce raw steel for a sustained full order book.



Data reflect closings on weekends and holidays.

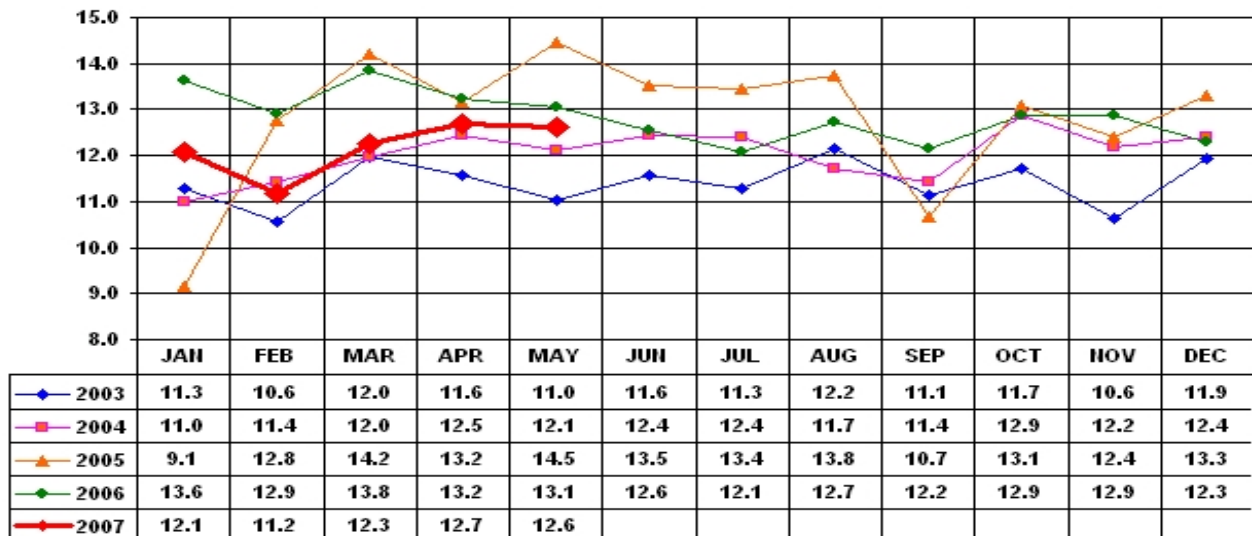
Source: Platts Metals Week

Trade Tech's Uranium (UF6) Monthly Spot Prices (US\$/kg as UF6)



Source: Trade Tech, Uranium Info Website – <http://www.uranium.info>

Coal and Coke Monthly Tonnage Indicator for Internal U.S. Waterways



Source: U.S. Army Corps of engineers, Waterborne Commerce Statistics Center