
National Mining Association

Weekly Statistical Summary

June 27, 2008 Edition
(Data for Week Ending June 21, 2008)

Prepared by
National Mining Association



Suite 500 East, 101 Constitution Avenue, NW
Washington, DC, 20001
Phone (202) 463-2600
Visit us at <http://www.nma.org>

NMA Weekly Statistical Summary

Vol. 46, No. 25
Dated 06/27/08

PRODUCTION, CONSUMPTION & TRADE						
	Week Ended			* Cumulative Jan 1 to		
	06/21/08	06/23/07	% Chng	06/21/08	06/21/07	% Chng
EIA Coal Production (000 Tons):						
Week Ended/Year to Date	21,013	22,416	-6.3%	548,716	543,760	0.9%
52 Weeks Ended	1,145,057	1,150,672	-0.5%			
* Due to leap year, 2008 cumulative reflects one extra day of tonnage.						
	May 08/07		% Chng	Jan - May 08/07		% Chng
Month Ended -- May	97,554	96,999	0.6%	490,862	475,947	3.1%
MONTH ENDED AND CUMULATIVE NUMBERS ARE PRELIMINARY AND SUBJECT TO CHANGE						
DOC Bituminous Coal Trade (000 Tons)						
	April 08/07		% Chng	Jan - Apr 08/07		% Chng
Exports:						
Metallurgical	4,300	2,405	78.8%	13,400	9,124	46.9%
Steam	3,621	2,415	49.9%	10,221	6,712	52.3%
Imports:	2,985	2,687	11.1%	10,626	11,473	-7.4%
	Week Ended			* Cumulative Jan 1 to		
	06/21/08	06/23/07	% Chng	06/21/08	06/23/07	% Chng
EEl Electric Output (Mil. Kwh)	82,466	84,607	-2.5%	1,899,511	1,888,354	0.6%
AISI Raw Steel Output (000 Tons)	2,076	2,119	-2.0%	52,301	50,998	2.6%
EIA U.S. PETROLEUM DATA						
4-Week Averages						
000 Barrels per Day						
	Week Ending			Cumulative Daily Averages		
	06/20/08	06/20/07	% Chng	2008	2007	% Chng
PETROLEUM SUPPLY:						
Domestic Crude	5,130	5,172	-0.8	5,113	5,190	-1.5
Net Imports (Incl. SPR)	9,969	10,036	-0.7	9,728	9,994	-2.7
SPR Stocks W/D or Added	-56	-9	--	-48	-10	--
Other Stocks W/D or added	350	-258	--	-68	-236	--
Natural Gas Liquids Prod.	2,210	2,367	-6.6	2,275	2,315	-3.2



NMA

THE AMERICAN RESOURCE National Mining Association Web Site: [http:// www.nma.org](http://www.nma.org)

EIA Estimated Weekly U.S. Coal Production Overview (Thousand Short Tons)

Coal-Producing Region and State	Week Ended			Year to Date			52 Weeks Ended		
	6/21/2008	6/14/2008	6/23/2007	6/21/2008	6/21/2007	Percent Change	6/21/2008	6/23/2007	Percent Change
Alabama	366	372	377	10,198	9,377	8.8	20,260	18,741	8.1
Alaska	26	27	28	702	765	-8.2	1,255	1,504	-16.5
Arizona	149	152	166	3,340	3,877	-13.8	7,413	8,272	-10.4
Arkansas	1	1	2	33	34	-4.0	81	50	61.4
Colorado	769	782	827	16,942	17,107	-1.0	36,002	36,877	-2.4
Illinois	567	576	720	15,369	17,626	-12.8	30,116	35,117	-14.2
Indiana	665	676	710	16,991	16,607	2.3	35,231	35,051	0.5
Kansas	6	6	9	195	211	-7.7	402	490	-17.9
Kentucky Total	2,257	2,295	2,375	57,717	56,269	2.6	116,160	117,319	-1.0
Eastern	1,703	1,732	1,828	42,929	42,677	0.6	86,844	89,657	-3.1
Western	553	563	547	14,787	13,591	8.8	29,317	27,662	6.0
Louisiana	92	99	77	1,814	1,070	69.6	3,786	3,377	12.1
Maryland	39	40	44	1,102	1,093	0.8	2,295	3,419	-32.9
Mississippi	107	61	65	1,618	1,687	-4.1	3,460	3,654	-5.3
Missouri	4	4	5	111	112	-0.5	235	244	-4.0
Montana	797	810	814	21,635	19,036	13.7	45,767	41,621	10.0
New Mexico	471	479	610	10,286	12,270	-16.2	22,338	25,991	-14.1
North Dakota	536	545	555	13,510	13,917	-2.9	29,089	30,407	-4.3
Ohio	444	451	420	11,725	10,276	14.1	23,913	21,934	9.0
Oklahoma	34	35	35	830	801	3.6	1,670	1,769	-5.6
Pennsylvania Total	1,210	1,231	1,362	32,542	32,651	-0.3	64,798	65,776	-1.5
Anthracite	23	23	32	825	759	8.7	1,617	1,555	4.0
Bituminous	1,187	1,207	1,330	31,717	31,892	-0.5	63,181	64,221	-1.6
Tennessee	50	51	51	1,242	1,279	-2.9	2,597	2,696	-3.7
Texas	740	753	836	19,206	19,101	0.6	41,822	43,609	-4.1
Utah	450	457	520	12,233	11,872	3.0	24,556	25,095	-2.1
Virginia	455	463	581	11,219	13,720	-18.2	22,754	28,949	-21.4
Washington	--	--	--	--	--	--	0	1,137	-100.0
West Virginia Total	2,981	3,031	3,163	76,120	75,099	1.4	153,592	152,034	1.0
Northern	773	786	866	21,119	21,378	-1.2	41,514	41,848	-0.8
Southern	2,207	2,244	2,296	55,001	53,721	2.4	112,078	110,186	1.7
Wyoming	7,798	7,855	8,064	212,036	207,904	2.0	455,467	445,538	2.2
Appalachian Total	7,248	7,370	7,826	187,077	186,172	0.5	377,053	383,207	-1.6
Interior Total	2,770	2,774	3,006	70,955	70,840	0.2	146,119	151,024	-3.2
Western Total	10,995	11,106	11,584	290,685	286,748	1.4	621,886	616,442	0.9
East of Miss. River	9,140	9,246	9,868	235,842	235,683	0.1	475,176	484,691	-2.0
West of Miss. River	11,873	12,004	12,548	312,874	308,077	1.6	669,881	665,981	0.6
Bituminous and Lignite	20,990	21,227	22,384	547,891	543,001	0.9	1,143,441	1,149,117	-0.5
Anthracite	23	23	32	825	759	8.7	1,617	1,555	4.0
U.S. Total	21,013	21,250	22,416	548,716	543,760	0.9	1,145,057	1,150,672	-0.5
Railroad Cars Loaded	135,792	137,127	145,316	3,630,010	3,523,362	3.0	7,510,680	7,402,205	1.5

Source: Energy Information Administration



Volume 76 No. 25

OUTPUT FOR WEEK ENDED - Jun 21, 2008

Jun 25, 2008

The net available amount of electric energy distributed by the Total Electric Utility Industry* for the week ended Saturday, **Jun 21, 2008** was **82,466** gigawatthours (GWh), according to the Edison Electric Institute. This is equivalent to **180** on the weekly electric output index.

WEEKLY ELECTRIC OUTPUT BY GEOGRAPHIC DIVISION
(48 CONTIGUOUS STATES)

	Week Ended June 21		52 Weeks Ended June 21	
	GWh Output	% Increase Over Corresponding Week of 2007	GWh Output	% Increase Over Corresponding Period of 2007
New England	2,473	-4.9	133,129	0.0
Mid-Atlantic	8,753	-5.0	455,673	0.6
Central Industrial	13,190	-9.8	719,599	1.3
West Central	6,442	-13.5	351,118	1.1
Southeast	22,100	-4.2	1,111,857	2.3
South Central	14,278	8.8	606,962	1.4
Rocky Mountain	6,083	-1.2	277,373	4.6
Pacific Northwest	2,846	5.2	166,460	7.2
Pacific Southwest	6,301	11.2	289,599	-1.5
Total United States	82,466	-2.5	4,111,770	1.7

WEEKLY ELECTRIC OUTPUT IN PREVIOUS WEEKS--GWh

Week Ended	2008	Week Ended	2007	% Inc. (08/07)	52 Weeks Ended	2008	% Inc. (08/07)
May 31	73,959	Jun 02	77,036	-4.0	May 31	4,104,937	1.5
Jun 07	82,141	Jun 09	78,952	4.0	Jun 07	4,108,126	1.6
Jun 14	87,195	Jun 16	81,410	7.1	Jun 14	4,113,911	1.7
Jun 21	82,466	Jun 23	84,607	-2.5	Jun 21	4,111,770	1.7
Jun 21	1,899,511	Jun 23	1,888,354	0.6	YEAR TO DATE, FIRST 25 WEEKS		

WEEKLY ELECTRIC OUTPUT INDEX--TOTAL U.S.*
SEASONALLY ADJUSTED 1982 = 100

Week Ended	2008	Week Ended	2007	Week Ended	2006
May 31	177	Jun 02	190	Jun 03	196
Jun 07	188	Jun 09	r 185	Jun 10	187
Jun 14	191	Jun 16	181	Jun 17	181
Jun 21	180	Jun 23	188	Jun 24	193

* Excludes Alaska and Hawaii. r Revised.

+ Includes investor-owned companies, cooperatives and government-owned utilities.

Copyright © 2008 Edison Electric Institute. All rights reserved.

WEEKLY ELECTRIC OUTPUT BY GEOGRAPHIC DIVISION (48 CONTIGUOUS STATES)

	Week Ended			NMA CUMULATIVE JANUARY WEEK ONE TO			52 Weeks Ended		
	21-Jun 2008 GWh Output	23-Jun 2007 GWh Output	% Increase Over Corresponding Week of 2007	21-Jun 2008 GWh Output	23-Jun 2007 GWh Output	% Increase Over Corresponding Week of 2007	21-Jun 2008 GWh Output	23-Jun 2007 GWh Output	% Increase Over Corresponding Week of 2007
New England	2,473	2,600	-4.9%	61,774	63,091	-2.1%	133,129	133,166	0.0%
Mid-Atlantic	8,753	9,211	-5.0%	209,611	212,607	-1.4%	455,673	452,800	0.6%
Central Industrial	13,190	14,622	-9.8%	335,990	338,529	-0.8%	719,599	710,668	1.3%
West Central	6,442	7,444	-13.5%	162,053	163,149	-0.7%	351,118	347,271	1.1%
Southeast	22,100	23,076	-4.2%	513,006	507,808	1.0%	1,111,857	1,086,844	2.3%
South Central	14,278	13,127	8.8%	280,462	271,635	3.2%	606,962	598,769	1.4%
Rocky Mountain	6,083	6,156	-1.2%	119,682	119,737	0.0%	277,373	265,170	4.6%
Pacific Northwest	2,846	2,704	5.3%	84,449	77,070	9.6%	166,460	155,338	7.2%
Pacific Southwest	6,301	5,667	11.2%	132,485	134,726	-1.7%	289,599	293,965	-1.5%
Total United States *	<u>82,466</u>	<u>84,607</u>	-2.5%	<u>1,899,512</u>	<u>1,888,352</u>	0.6%	<u>4,111,770</u>	<u>4,043,991</u>	1.7%

Notes: EEI output data are an estimate of electricity load made available for distribution derived as weekly net generation + purchases from non-utilities + net imports - exports - sales for resale. It is not meant to be a measure of electricity generation for the U.S. EEI survey data represent the majority of national distribution (large utilities, large government power projects, some independent and large municipal power projects). The remaining segment of the industry (smaller producers) is estimated. Non-utility generation is captured via direct sales to utilities.

* Excludes Alaska and Hawaii

** Less than one-tenth of one percent

SOURCE: Edison Electric Institute (EEI), *Weekly Electric Output Report*.

AMERICAN IRON AND STEEL INSTITUTE
 1140 Connecticut Avenue, Suite 705
 Washington, D.C. 20036

June 23, 2008

ESTIMATED WEEKLY RAW STEEL* PRODUCTION

<u>Period</u>	<u>Thousand Net Tons</u>	<u>Percent Change from Previous Period</u>	<u>Percent Capability Utilization**</u>	<u>Production by District</u>		
				<u>Week Ending</u>		<u>June 14</u>
				<u>June 21</u>	<u>June 14</u>	
<u>Week Ending</u>				North East Coast	183	173
June 21, 2008	2,076	-1.1	87.0	Pgh/Youngstown	214	211
June 21, 2007	2,119	-2.0	88.6	Lake Erie	93	89
June 14, 2008	2,101	1.5	88.1	Detroit	97	108
				Indiana/Chicago	473	483
				Midwest	261	257
				Southern	661	686
				Western	94	94
				Total	2,076	2,101
<u>Year-to-Date+</u>						
June 21, 2008	52,301	2.5	88.7			
June 21, 2007	50,998	-	85.7			

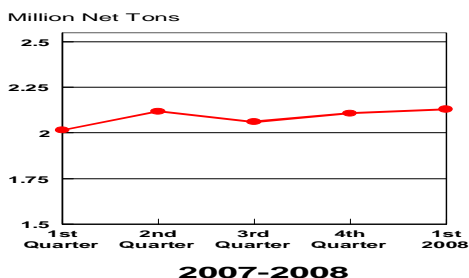
*Raw steel production tonnage included in this report is estimated based on a sampling of steel producers. Therefore, this report should be used primarily to assess production trends. The AISI production report "AIS 7," produced monthly and available by subscription, provides a more accurate summary of steel production based on data supplied by companies representing approximately 75% of U.S. production capacity.

+Includes revisions for previous months

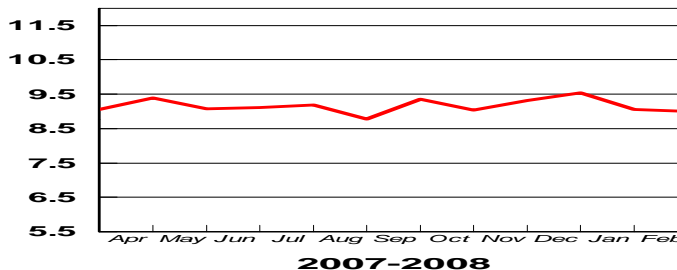
NOTE: Capability for the Fourth Quarter 2007 is approximately 31.3 million net tons vs 30.7 million net tons for the same period last year, and 30.1 million tons for the third quarter of 2007.

Capability -	2003 approx.	2.3 million tons/week
	2004	2.2
	2005	2.3
	2006	2.4
	2007	2.4

Average Weekly Raw Steel Production

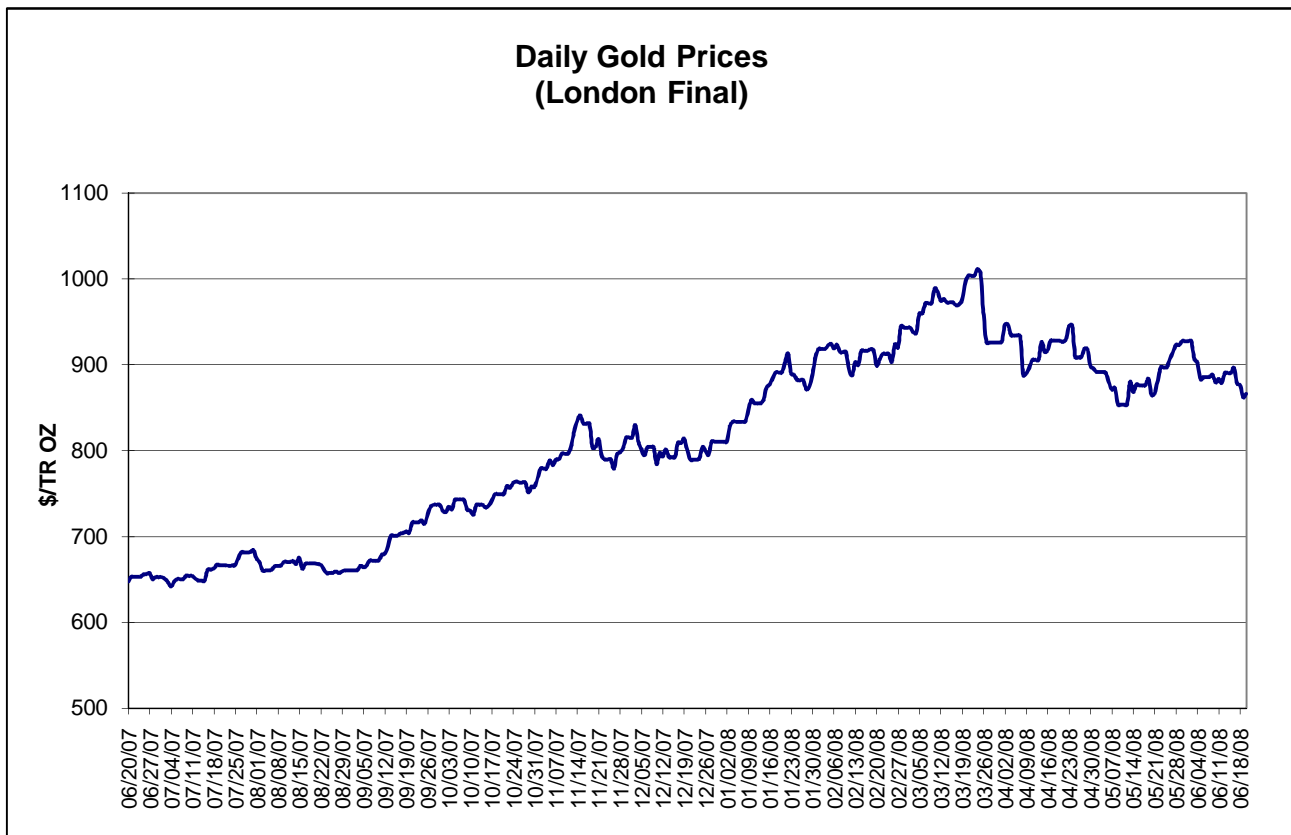
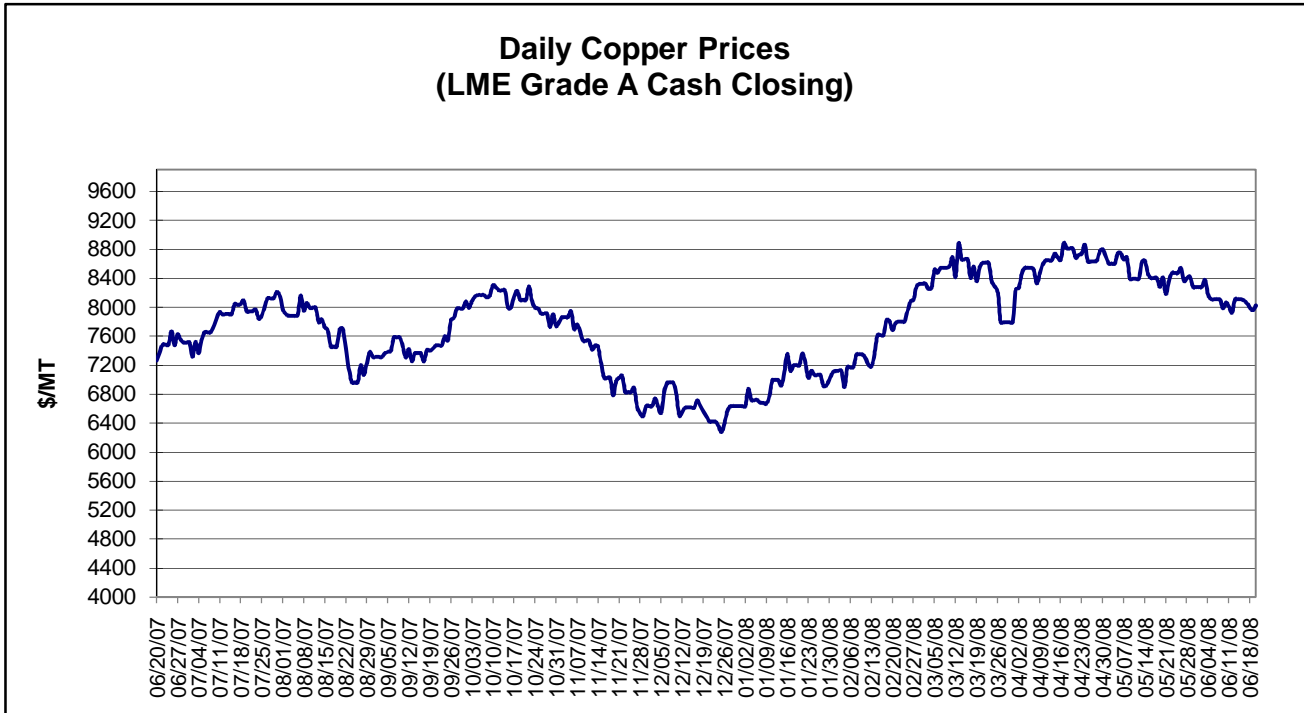


Monthly Raw Steel Production
 Million Net Tons



*Steel in the first solid state after melting suitable for further processing or sale, including ingots, steel for castings and strand or pressure cast blooms, slabs, or other product forms.

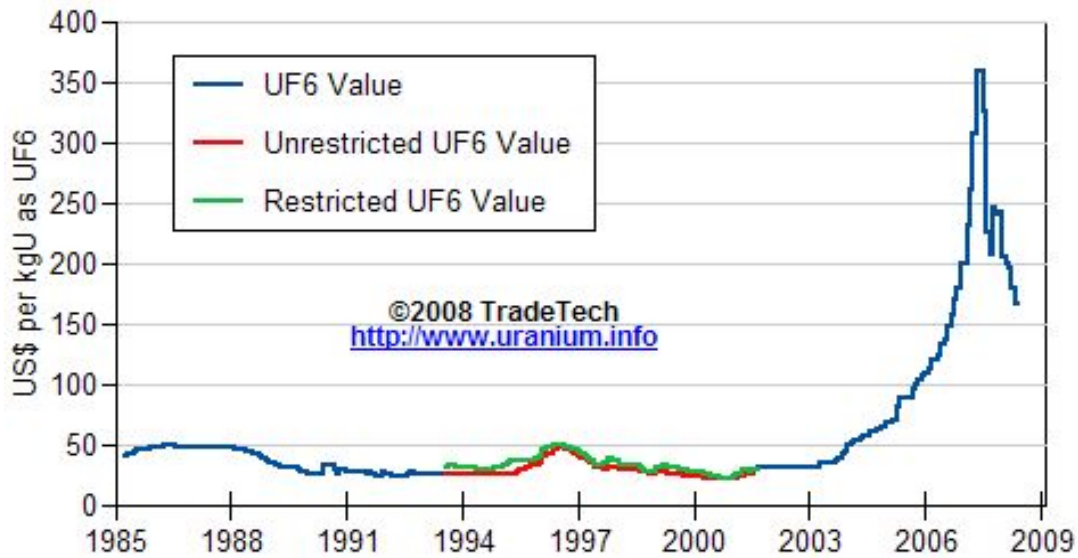
** Based on tonnage capability to produce raw steel for a sustained full order book.



Data reflect closings on weekends and holidays.

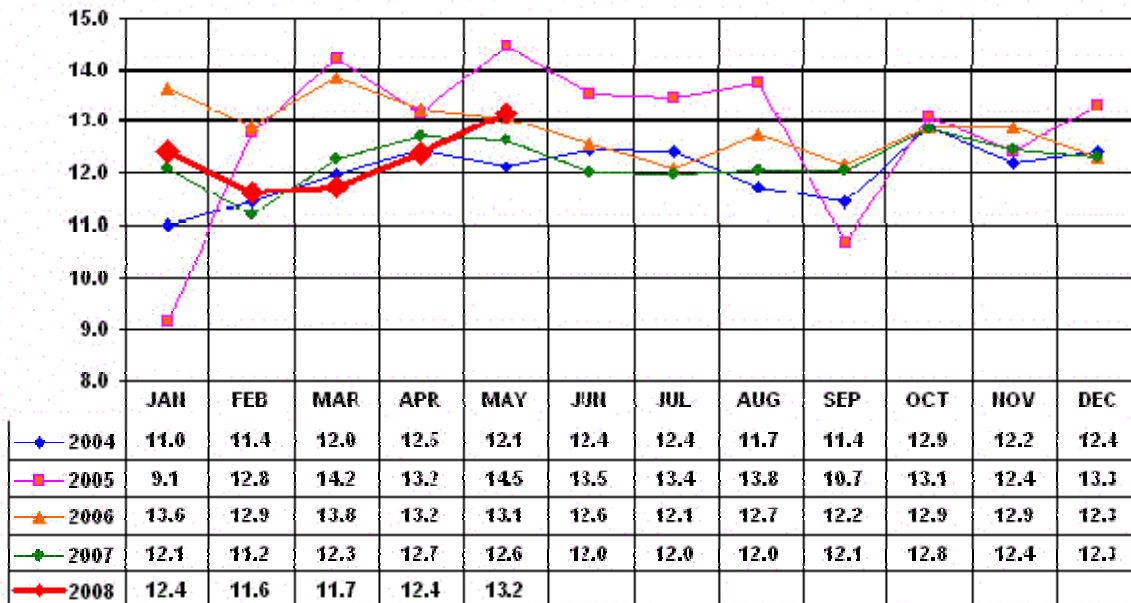
Source: Platts Metals Week

Trade Tech's Uranium (UF6) Monthly Spot Prices (US\$/kg as UF6)



Source: Trade Tech, Uranium Info Website – <http://www.uranium.info>

Coal and Coke Monthly Tonnage Indicator for Internal U.S. Waterways



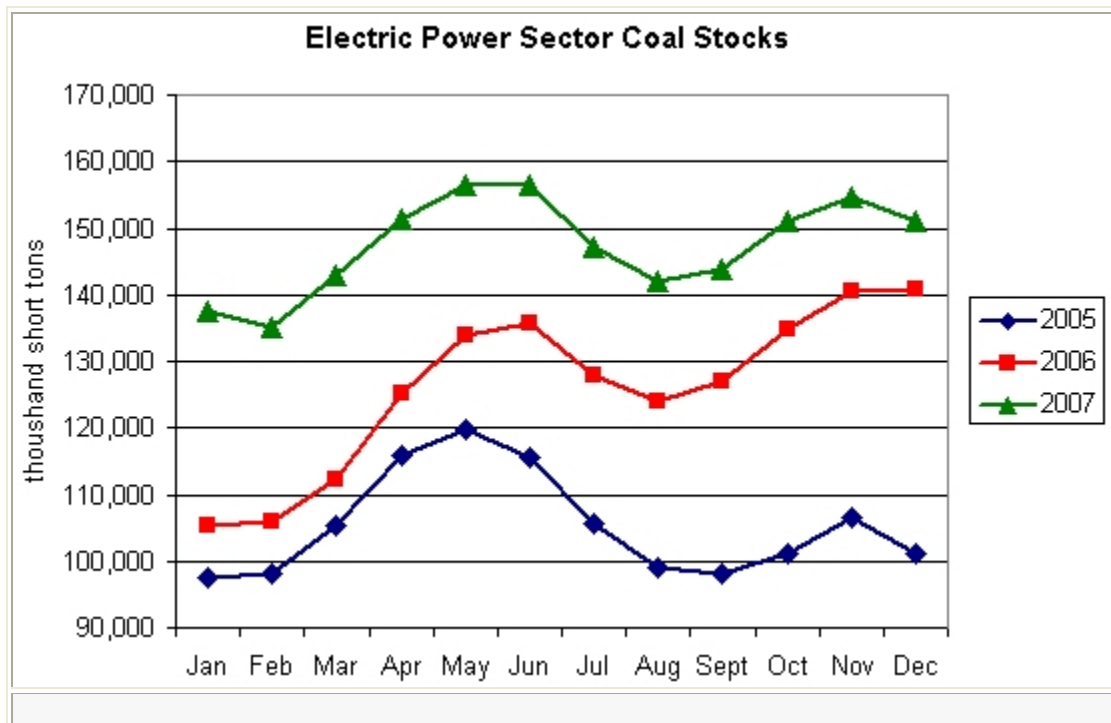
Source: U.S. Army Corps of Engineers, Waterborne Commerce Statistics Center

EIA Weekly Spot Coal Prices

The following average spot coal prices appear in the graphic below, for the previous and most recent weeks:
(Dollars per Short Ton)

Week Ended	Central Appalachia 12,500 Btu, 1.2 SO2	Northern Appalachia 13,000 Btu, <3.0 SO2	Illinois Basin 11,800 Btu, 5.0 SO2	Powder River Basin 8,800 Btu, 0.8 SO2	Uinta Basin 11,700 Btu, 0.8 SO2
16-May-08	\$100.90	\$105.00	\$58.00	\$14.00	\$44.00
23-May-08	\$104.25	\$105.00	\$65.00	\$14.15	\$44.00
30-May-08	\$108.25	\$105.00	\$65.00	\$14.10	\$44.00
06-June-08	\$108.25	\$105.00	\$65.00	\$13.30	\$44.00
13-June-08	\$117.60	\$108.50	\$65.00	\$13.30	\$54.00
20-June-08	\$117.60	\$118.00	\$65.00	\$13.25	\$54.00

Source: Energy Information Administration (from Platts *Coal Outlook*, "Weekly Price Survey")



Source: Energy Information Administration

USGS Production of Selected Mineral Commodities	2008 First Quarter	2007 First Quarter	Percent Change
Aluminum, secondary (000 Mt.)	240.0	243.0	-1%
Cement (Mil. Mt.)	17.2	18.0	-4%
Gypsum (Mil. Mt.) *	4.7	5.4	-13%
Iron Ore (Mil. Mt.)	12.9	11.4	13%
Phosphate rock (Mil. Mt.)	7.6	7.1	7%
Sand & gravel, construction (Mil. Mt.)	184.0	194.0	-5%
Soda ash (Mil. Mt.)	2.8	2.7	4%
Stone, crushed (Mil. Mt.)	280.0	263.0	6%
Zinc (000 Mt.)	207.0	181.0	14%

Source: U.S. Geological Survey, Mineral Industry Surveys, *U.S. Production of Selected Mineral Commodities in the First Quarter 2008*

* Revised June 16, 2008. Note - data are preliminary.