
National Mining Association

Weekly Statistical Summary

June 6, 2008 Edition
(Data for Week Ending May 31, 2008)

Prepared by
National Mining Association



Suite 500 East, 101 Constitution Avenue, NW
Washington, DC, 20001
Phone (202) 463-2600
Visit us at <http://www.nma.org>

NMA Weekly Statistical Summary

Vol. 46, No. 22
Dated 06/06/08

PRODUCTION, CONSUMPTION & TRADE						
	Week Ended			* Cumulative Jan 1 to		
	05/31/08	06/02/07	% Chng	05/31/08	05/31/07	% Chng
EIA Coal Production (000 Tons):						
Week Ended/Year to Date	21,203	22,041	-3.8%	490,862	475,947	3.1%
52 Weeks Ended	1,153,855	1,150,268	0.3%			
* Due to leap year, 2008 cumulative reflects one extra day of tonnage.						
Month Ended -- May	May 08/07		% Chng	Jan - May 08/07		% Chng
	97,554	96,999	0.6%	490,862	475,947	3.1%
MONTH ENDED AND CUMULATIVE NUMBERS ARE PRELIMINARY AND SUBJECT TO CHANGE						
DOC Bituminous Coal Trade (000 Tons)						
Exports:	March 08/07		% Chng	Jan - Mar 08/07		% Chng
Metallurgical	3,745	2,769	35.2%	9,101	6,718	35.5%
Steam	2,901	1,292	124.5%	6,600	4,296	53.6%
Imports:	2,640	3,285	-19.6%	7,640	8,786	-13.0%
	Week Ended			* Cumulative Jan 1 to		
	05/31/08	06/02/07	% Chng	05/31/08	06/02/07	% Chng
EEl Electric Output (Mil. Kwh)	73,959	77,036	-4.0%	1,647,709	1,643,384	0.3%
AISI Raw Steel Output (000 Tons)	2,114	2,121	-0.3%	45,990	44,641	3.0%
EIA U.S. PETROLEUM DATA						
4-Week Averages						
000 Barrels per Day						
PETROLEUM SUPPLY:	Week Ending			Cumulative Daily Averages		
	05/30/08	05/30/07	% Chng	2008	2007	% Chng
Domestic Crude	5,110	5,240	-2.5	5,111	5,196	-1.6
Net Imports (Incl. SPR)	9,453	10,256	-7.8	9,685	9,999	-3.1
SPR Stocks W/D or Added	-99	-28	--	-50	-11	--
Other Stocks W/D or added	673	-354	--	-111	-238	--
Natural Gas Liquids Prod.	2,444	2,463	-0.8	2,284	2,353	-2.9



NMA

THE AMERICAN RESOURCE National Mining Association Web Site: [http:// www.nma.org](http://www.nma.org)

EIA Estimated Weekly U.S. Coal Production Overview (Thousand Short Tons)

Coal-Producing Region and State	Week Ended			Year to Date		Percent Change	52 Weeks Ended		Percent Change
	5/31/2008	5/24/2008	6/2/2007	5/31/2008	5/31/2007		5/31/2008	6/2/2007	
Alabama	368	407	353	8,519	8,208	3.8	19,696	18,571	6.1
Alaska	26	29	26	562	681	-17.6	1,197	1,508	-20.6
Arizona	110	122	155	2,625	3,367	-22.0	7,188	8,335	-13.8
Arkansas	2	2	1	41	29	40.4	94	48	94.5
Colorado	692	765	774	15,686	14,661	7.0	37,191	36,151	2.9
Illinois	626	691	674	14,679	15,470	-5.1	31,556	34,732	-9.1
Indiana	669	739	665	15,573	14,442	7.8	35,914	34,897	2.9
Kansas	10	11	9	222	182	21.9	457	493	-7.3
Kentucky Total	2,240	2,476	2,223	50,851	49,083	3.6	116,318	117,504	-1.0
Eastern	1,629	1,800	1,711	37,075	37,137	-0.2	86,396	89,994	-4.0
Western	611	676	512	13,775	11,945	15.3	29,922	27,509	8.8
Louisiana	70	93	66	1,686	880	91.5	3,850	3,442	11.9
Maryland	48	54	42	989	959	3.1	2,313	3,605	-35.8
Mississippi	45	45	83	1,381	1,460	-5.4	3,440	3,695	-6.9
Missouri	5	5	4	103	97	5.9	240	257	-6.4
Montana	843	932	762	18,805	16,635	13.0	45,346	41,620	9.0
New Mexico	456	503	571	10,269	10,400	-1.3	24,125	25,448	-5.2
North Dakota	521	575	519	12,429	12,196	1.9	29,649	30,263	-2.0
Ohio	458	507	393	10,378	8,993	15.4	23,808	21,844	9.0
Oklahoma	36	39	32	818	694	17.8	1,761	1,780	-1.1
Pennsylvania Total	1,251	1,382	1,274	28,614	28,485	0.5	64,896	65,718	-1.2
Anthracite	38	42	30	808	661	22.3	1,695	1,544	9.8
Bituminous	1,213	1,340	1,244	27,806	27,823	-0.1	63,201	64,174	-1.5
Tennessee	49	54	48	1,084	1,126	-3.7	2,590	2,688	-3.6
Texas	813	899	783	18,228	16,628	9.6	43,316	43,463	-0.3
Utah	459	508	487	10,141	10,311	-1.7	24,002	25,108	-4.4
Virginia	449	496	543	10,772	11,966	-10.0	24,024	28,978	-17.1
Washington	--	--	--	--	--	--	0	1,255	-100.0
West Virginia Total	2,950	3,260	2,960	67,196	65,522	2.6	154,020	151,486	1.7
Northern	897	991	811	20,848	18,789	11.0	43,806	41,856	4.7
Southern	2,053	2,268	2,149	46,348	46,733	-0.8	110,214	109,630	0.5
Wyoming	8,007	7,358	8,594	189,211	183,470	3.1	456,866	447,382	2.1
Appalachian Total	7,202	7,959	7,323	164,628	162,397	1.4	377,744	382,883	-1.3
Interior Total	2,886	3,200	2,829	66,506	61,828	7.6	150,549	150,315	0.2
Western Total	11,114	10,792	11,889	259,728	251,723	3.2	625,562	617,070	1.4
East of Miss. River	9,153	10,110	9,256	210,037	205,714	2.1	478,575	483,716	-1.1
West of Miss. River	12,050	11,841	12,785	280,826	270,234	3.9	675,280	666,552	1.3
Bituminous and Lignite	21,165	21,909	22,011	490,054	475,286	3.1	1,152,160	1,148,724	0.3
Anthracite	38	42	30	808	661	22.3	1,695	1,544	9.8
U.S. Total	21,203	21,951	22,041	490,862	475,947	3.1	1,153,855	1,150,268	0.3
Railroad Cars Loaded	136,953	142,993	142,702	3,215,609	3,091,992	4.0	7,527,649	7,410,533	1.6

Source: Energy Information Administration

EIA Estimated Weekly and Monthly U.S. Coal Production Overview (Thousand Short Tons)

Coal-Producing Region and State	Week Ended		Year to Date		Month Ended		January - May		Percent Change
	5/31/2008	6/2/2007	5/31/2008	5/31/2007	May 2008	May 2007	2008	2007	
Alabama	368	353	8,519	8,208	1,732	1,542	8,519	8,208	3.8
Alaska	26	26	562	681	122	118	562	681	-17.6
Arizona	110	155	2,625	3,367	517	683	2,625	3,367	-22.0
Arkansas	2	1	41	29	7	6	41	29	40.4
Colorado	692	774	15,686	14,661	3,273	3,409	15,686	14,661	7.0
Illinois	626	674	14,679	15,470	2,948	2,996	14,679	15,470	-5.1
Indiana	669	665	15,573	14,442	3,150	2,921	15,573	14,442	7.8
Kansas	10	9	222	182	48	38	222	182	21.9
Kentucky Total	2,240	2,223	50,851	49,083	10,550	9,855	50,851	49,083	3.6
Eastern	1,629	1,711	37,075	37,137	7,668	7,591	37,075	37,137	-0.2
Western	611	512	13,775	11,945	2,883	2,263	13,775	11,945	15.3
Louisiana	70	66	1,686	880	300	118	1,686	880	91.5
Maryland	48	42	989	959	228	186	989	959	3.1
Mississippi	45	83	1,381	1,460	280	251	1,381	1,460	-5.4
Missouri	5	4	103	97	23	19	103	97	5.9
Montana	843	762	18,805	16,635	3,990	3,351	18,805	16,635	13.0
New Mexico	456	571	10,269	10,400	2,145	2,509	10,269	10,400	-1.3
North Dakota	521	519	12,429	12,196	2,449	2,274	12,429	12,196	1.9
Ohio	458	393	10,378	8,993	2,160	1,724	10,378	8,993	15.4
Oklahoma	36	32	818	694	167	143	818	694	17.8
Pennsylvania Total	1,251	1,274	28,614	28,485	5,887	5,613	28,614	28,485	0.5
Anthracite	38	30	808	661	179	132	808	661	22.3
Bituminous	1,213	1,244	27,806	27,823	5,709	5,480	27,806	27,823	-0.1
Tennessee	49	48	1,084	1,126	231	214	1,084	1,126	-3.7
Texas	813	783	18,228	16,628	3,849	3,424	18,228	16,628	9.6
Utah	459	487	10,141	10,311	2,163	2,170	10,141	10,311	-1.7
Virginia	449	543	10,772	11,966	2,114	2,402	10,772	11,966	-10.0
Washington	--	--	--	--	--	--	--	--	--
West Virginia Total	2,950	2,960	67,196	65,522	13,898	13,074	67,196	65,522	2.6
Northern	897	811	20,848	18,789	4,226	3,621	20,848	18,789	11.0
Southern	2,053	2,149	46,348	46,733	9,672	9,453	46,348	46,733	-0.8
Wyoming	8,007	8,594	189,211	183,470	35,319	37,961	189,211	183,470	3.1
Appalachian Total	7,202	7,323	164,628	162,397	33,919	32,346	164,628	162,397	1.4
Interior Total	2,886	2,829	66,506	61,828	13,656	12,180	66,506	61,828	7.6
Western Total	11,114	11,889	259,728	251,723	49,979	52,474	259,728	251,723	3.2
East of Miss. River	9,153	9,256	210,037	205,714	43,181	40,776	210,037	205,714	2.1
West of Miss. River	12,050	12,785	280,826	270,234	54,373	56,223	280,826	270,234	3.9
Bituminous and Lignite	21,165	22,011	490,054	475,286	97,375	96,867	490,054	475,286	3.1
Anthracite	38	30	808	661	179	132	808	661	22.3
U.S. Total	21,203	22,041	490,862	475,947	97,554	96,999	490,862	475,947	3.1
Railroad Cars Loaded	136,953	142,702	3,215,609	3,091,992	--	--	--	--	--

Source: Energy Information Administration



Volume 76 No. 22

OUTPUT FOR WEEK ENDED - May 31, 2008

Jun 04, 2008

The net available amount of electric energy distributed by the Total Electric Utility Industry+ for the week ended Saturday, **May 31, 2008** was **73,959** gigawatthours (GWh), according to the Edison Electric Institute. This is equivalent to **177** on the weekly electric output index.

WEEKLY ELECTRIC OUTPUT BY GEOGRAPHIC DIVISION

(48 CONTIGUOUS STATES)

	Week Ended May 31		52 Weeks Ended May 31	
	GWh Output	% Increase Over Corresponding Week of 2007	GWh Output	% Increase Over Corresponding Period of 2007
New England	2,280	-9.2	132,759	-0.5
Mid-Atlantic	7,740	-15.1	453,933	0.3
Central Industrial	11,732	-14.5	719,940	1.6
West Central	5,912	-7.0	352,769	1.7
Southeast	20,777	-0.2	1,109,116	2.1
South Central	13,441	16.3	603,174	0.2
Rocky Mountain	4,433	-13.2	278,243	5.1
Pacific Northwest	2,788	4.0	165,904	7.2
Pacific Southwest	4,856	-5.7	289,099	-1.8
Total United States	73,959	-4.0	4,104,937	1.5

WEEKLY ELECTRIC OUTPUT IN PREVIOUS WEEKS--GWh

Week Ended	2008	Week Ended	2007	% Inc. (08/07)	52 Weeks Ended	2008	% Inc. (08/07)
May 10	70,932	May 12	72,758	-2.5	May 10	4,110,220	1.6
May 17	69,639	May 19	71,696	-2.9	May 17	4,108,163	1.5
May 24	73,798	May 26	73,946	-0.2	May 24	4,108,015	1.5
May 31	73,959	Jun 02	77,036	-4.0	May 31	4,104,937	1.5
May 31	1,647,709	Jun 02	1,643,384	0.3	YEAR TO DATE, FIRST 22 WEEKS		

WEEKLY ELECTRIC OUTPUT INDEX--TOTAL U.S.*

SEASONALLY ADJUSTED 1982 = 100

Week Ended	2008	Week Ended	2007	Week Ended	2006
May 10	179	May 12	183	May 13	175
May 17	174	May 19	178	May 20	171
May 24	179	May 26	183	May 27	183
May 31	177	Jun 02	190	Jun 03	196

* Excludes Alaska and Hawaii.

+ Includes investor-owned companies, cooperatives and government-owned utilities.

Copyright © 2008 Edison Electric Institute. All rights reserved.

WEEKLY ELECTRIC OUTPUT BY GEOGRAPHIC DIVISION (48 CONTIGUOUS STATES)

	Week Ended			NMA CUMULATIVE JANUARY WEEK ONE TO			52 Weeks Ended		
	31-May 2008 GWh Output	2-Jun 2007 GWh Output	% Increase Over Corresponding Week of 2007	31-May 2008 GWh Output	2-Jun 2007 GWh Output	% Increase Over Corresponding Week of 2007	31-May 2008 GWh Output	2-Jun 2007 GWh Output	% Increase Over Corresponding Week of 2007
New England	2,280	2,511	-9.2%	53,896	55,583	-3.0%	132,759	133,440	-0.5%
Mid-Atlantic	7,740	9,120	-15.1%	181,285	186,021	-2.5%	453,933	452,356	0.3%
Central Industrial	11,732	13,729	-14.5%	294,339	296,537	-0.7%	719,940	708,862	1.6%
West Central	5,912	6,356	-7.0%	142,347	141,793	0.4%	352,769	346,978	1.7%
Southeast	20,777	20,826	-0.2%	444,062	441,605	0.6%	1,109,116	1,086,451	2.1%
South Central	13,441	11,558	16.3%	237,353	232,313	2.2%	603,174	601,721	0.2%
Rocky Mountain	4,433	5,108	-13.2%	103,352	102,538	0.8%	278,243	264,771	5.1%
Pacific Northwest	2,788	2,681	4.0%	75,785	68,962	9.9%	165,904	154,765	7.2%
Pacific Southwest	4,856	5,147	-5.7%	115,291	118,031	-2.3%	289,099	294,394	-1.8%
Total United States *	<u>73,959</u>	<u>77,036</u>	-4.0%	<u>1,647,710</u>	<u>1,643,383</u>	0.3%	<u>4,104,937</u>	<u>4,043,738</u>	1.5%

Notes: EEI output data are an estimate of electricity load made available for distribution derived as weekly net generation + purchases from non-utilities + net imports - exports - sales for resale. It is not meant to be a measure of electricity generation for the U.S. EEI survey data represent the majority of national distribution (large utilities, large government power projects, some independent and large municipal power projects). The remaining segment of the industry (smaller producers) is estimated. Non-utility generation is captured via direct sales to utilities.

* Excludes Alaska and Hawaii

** Less than one-tenth of one percent

SOURCE: Edison Electric Institute (EEI), *Weekly Electric Output Report*.

AMERICAN IRON AND STEEL INSTITUTE
 1140 Connecticut Avenue, Suite 705
 Washington, D.C. 20036

June 3, 2008

ESTIMATED WEEKLY RAW STEEL* PRODUCTION

<u>Period</u>	Thousand <u>Net Tons</u>	Percent Change from Previous <u>Period</u>	Percent Capability <u>Utilization**</u>	<u>Production by District</u>		
				<u>Week Ending</u>		
				<u>May 31</u>	<u>May 24</u>	
<u>Week Ending</u>						
				North East Coast	166	182
				Pgh/Youngstown	214	212
				Lake Erie	85	84
				Detroit	92	93
				Indiana/Chicago	530	512
				Midwest	261	264
				Southern	672	695
				Western	<u>94</u>	<u>98</u>
				Total	2114	2140
<u>Year-to-Date+</u>						
May 31, 2008	2,114	-1.2	88.6			
May 31, 2007	2,121	-0.3	88.4			
May 31, 2008	2,140	-0.2	89.7			
May 31, 2008	45,990	3.0	88.8			
May 31, 2007	44,641	-	85.1			

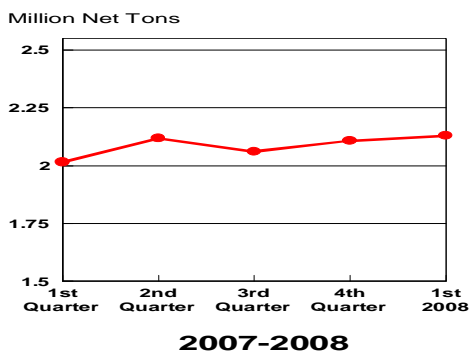
*Raw steel production tonnage included in this report is estimated based on a sampling of steel producers. Therefore, this report should be used primarily to assess production trends. The AISI production report "AIS 7," produced monthly and available by subscription, provides a more accurate summary of steel production based on data supplied by companies representing approximately 75% of U.S. production capacity.

+Includes revisions for previous months

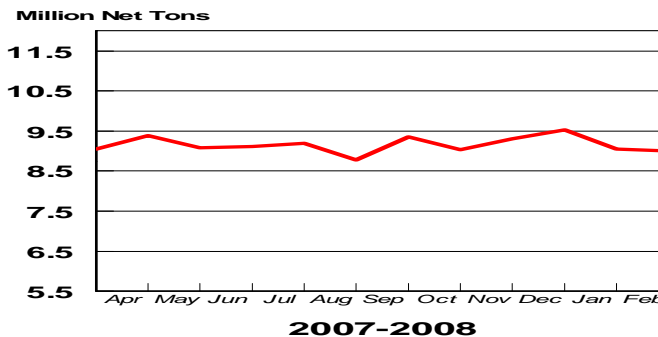
NOTE: Capability for the Fourth Quarter 2007 is approximately 31.3 million net tons vs 30.7 million net tons for the same period last year, and 30.1 million tons for the third quarter of 2007.

Capability -	2003 approx.	2.3 million tons/week
	2004	2.2
	2005	2.3
	2006	2.4
	2007	2.4

Average Weekly Raw Steel Production

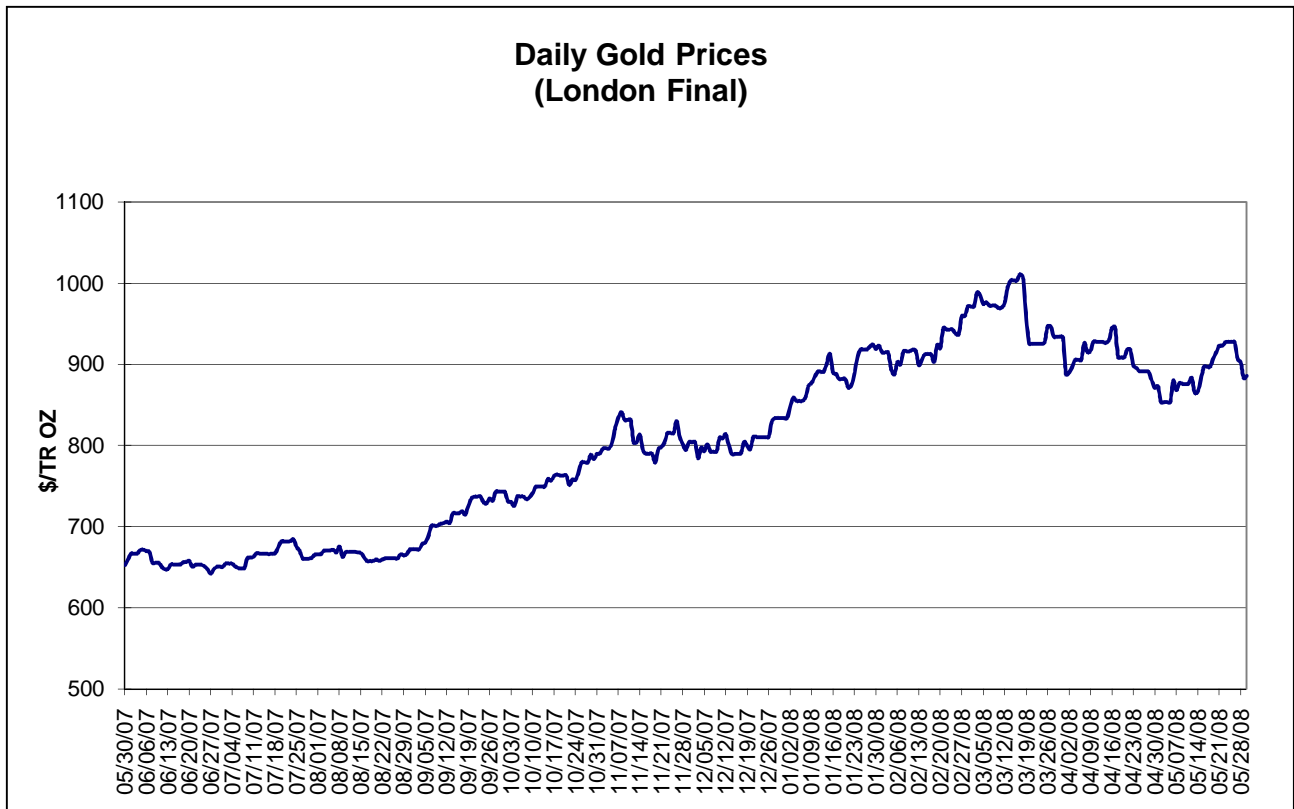
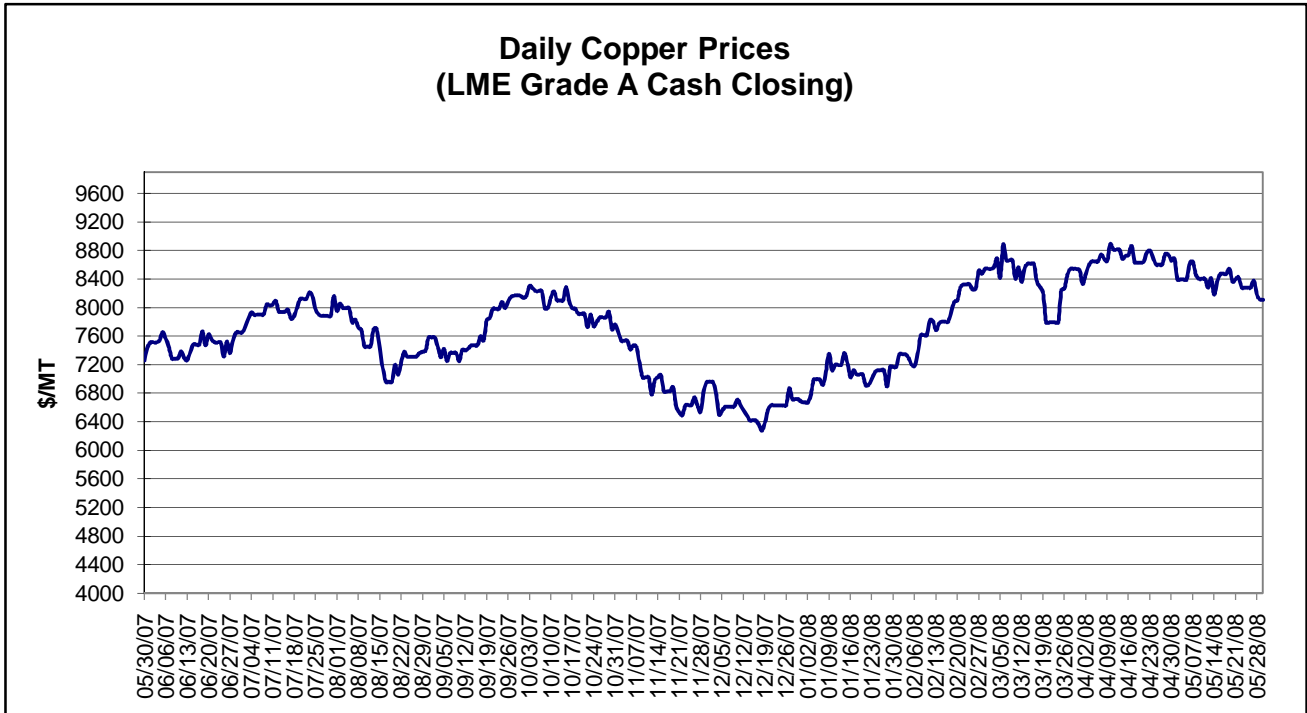


Monthly Raw Steel Production



*Steel in the first solid state after melting suitable for further processing or sale, including ingots, steel for castings and strand or pressure cast blooms, slabs, or other product forms.

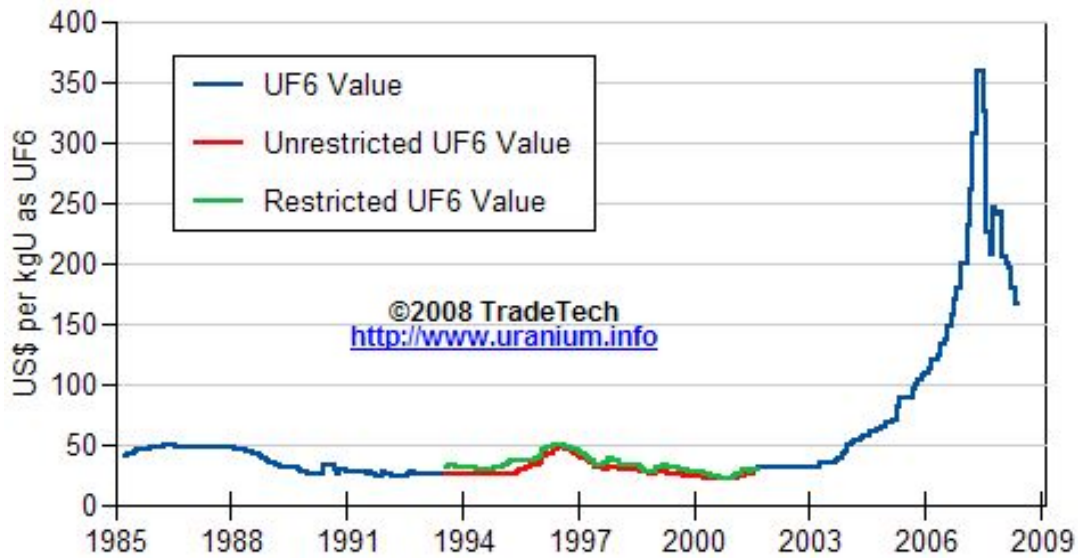
** Based on tonnage capability to produce raw steel for a sustained full order book.



Data reflect closings on weekends and holidays.

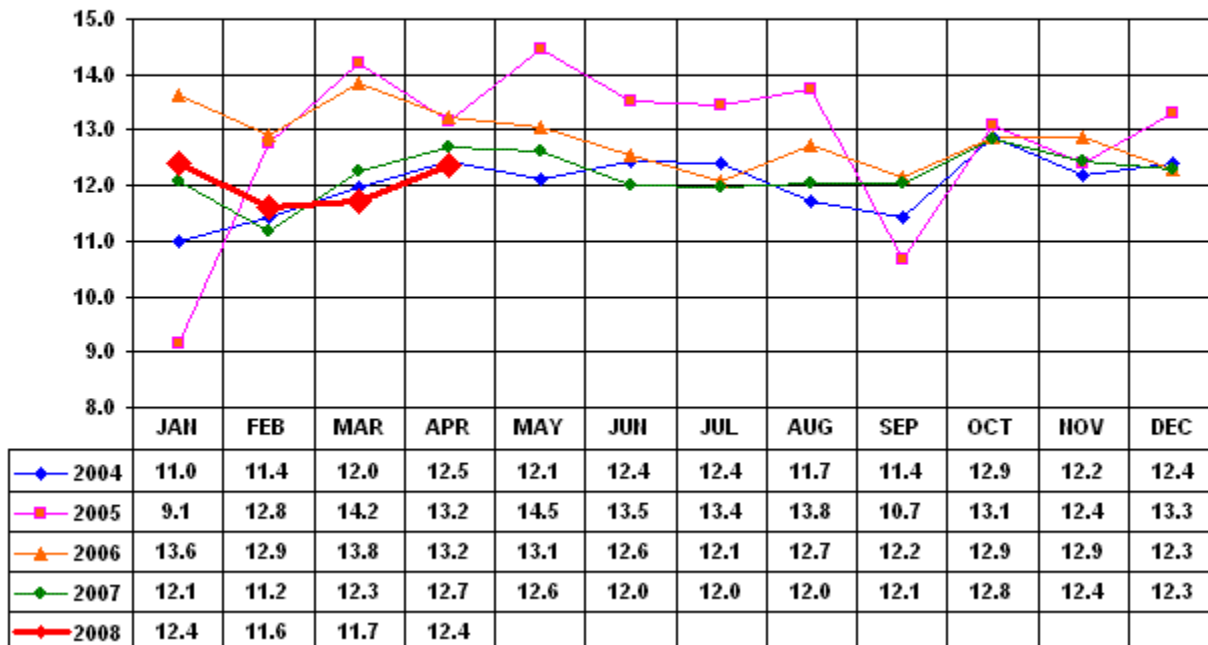
Source: Platts Metals Week

Trade Tech's Uranium (UF6) Monthly Spot Prices (US\$/kg as UF6)



Source: Trade Tech, Uranium Info Website – <http://www.uranium.info>

Coal and Coke Monthly Tonnage Indicator for Internal U.S. Waterways



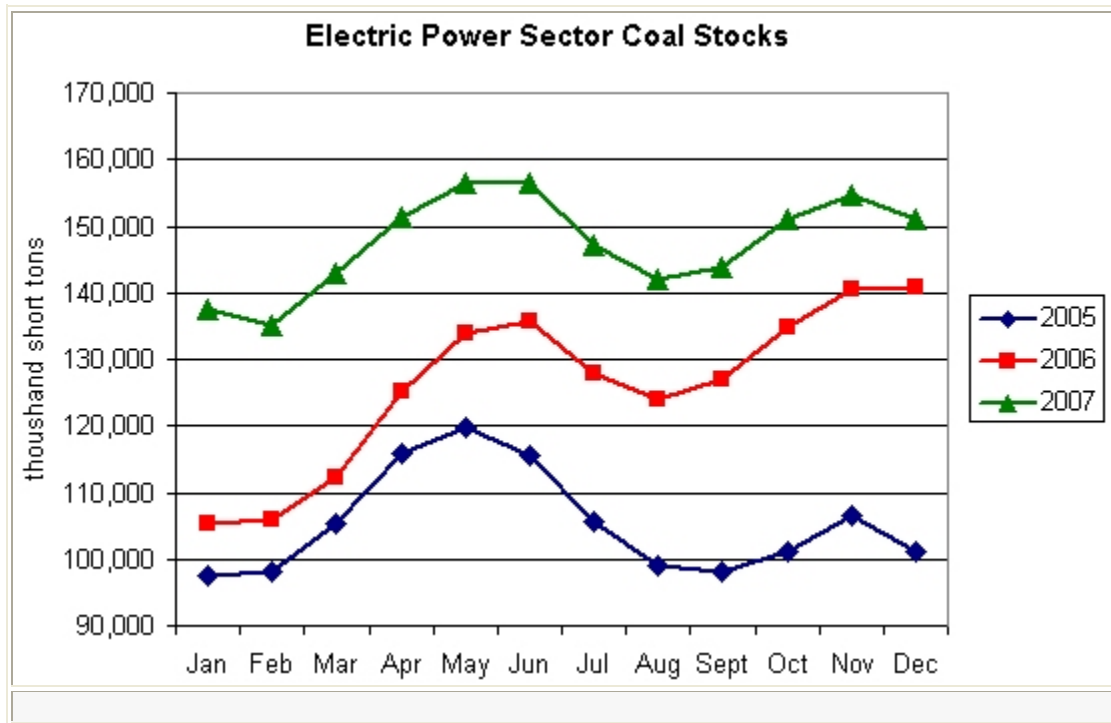
Source: U.S. Army Corps of Engineers, Waterborne Commerce Statistics Center

EIA Weekly Spot Coal Prices

The following average spot coal prices appear in the graphic below, for the previous and most recent weeks: (Dollars per Short Ton)

Week Ended	Central Appalachia 12,500 Btu, 1.2 SO2	Northern Appalachia 13,000 Btu, <3.0 SO2	Illinois Basin 11,800 Btu, 5.0 SO2	Powder River Basin 8,800 Btu, 0.8 SO2	Uinta Basin 11,700 Btu, 0.8 SO2
25-Apr-08	\$94.25	\$105.00	\$57.00	\$14.15	\$44.00
02-May-08	\$94.25	\$105.00	\$58.00	\$14.20	\$44.00
09-May-08	\$96.75	\$105.00	\$58.00	\$14.00	\$44.00
16-May-08	\$100.90	\$105.00	\$58.00	\$14.00	\$44.00
23-May-08	\$104.25	\$105.00	\$65.00	\$14.15	\$44.00
30-May-08	\$108.25	\$105.00	\$65.00	\$14.10	\$44.00

Source: Energy Information Administration (from *Platts Coal Outlook*, "Weekly Price Survey")



Source: Energy Information Administration

USGS Production of Selected Mineral Commodities	2008 First Quarter	2007 First Quarter	Percent Change
Aluminum, secondary (000 Mt.)	240.0	243.0	-1%
Cement (Mil. Mt.)	17.2	18.0	-4%
Gypsum (Mil. Mt.)	4.9	5.7	-14%
Iron Ore (Mil. Mt.)	12.9	11.4	13%
Phosphate rock (Mil. Mt.)	7.6	7.1	7%
Sand & gravel, construction (Mil. Mt.)	184.0	194.0	-5%
Soda ash (Mil. Mt.)	2.8	2.7	4%
Stone, crushed (Mil. Mt.)	280.0	263.0	6%
Zinc (000 Mt.)	207.0	181.0	14%

Source: U.S. Geological Survey, Mineral Industry Surveys, *U.S. Production of Selected Mineral Commodities in the First Quarter 2008*