
National Mining Association

Weekly Statistical Summary

June 8, 2007 Edition
(Data for Week Ending June 2, 2007)

Prepared by
National Mining Association



Suite 500 East, 101 Constitution Avenue, NW
Washington, DC, 20001
Phone (202) 463-2600
Visit us at <http://www.nma.org>

NMA Weekly Statistical Summary

Vol. 45, No. 22
Dated 06/08/07

PRODUCTION, CONSUMPTION & TRADE						
	Week Ended			Cumulative Jan 1 to		
	06/02/07	06/03/06	% Chng	06/02/07	06/03/06	% Chng
EIA Coal Production (000 Tons):						
Week Ended/Year to Date	21,881	22,156	-1.2%	480,303	492,355	-2.4%
52 Weeks Ended	1,146,735	1,142,965	0.3%			
Month Ended -- May						
	May 07/06		% Chng	Jan - May 07/06		% Chng
	96,231	99,827	-3.6%	473,733	484,357	-2.2%
MONTH ENDED AND CUMULATIVE NUMBERS ARE PRELIMINARY AND SUBJECT TO CHANGE						
DOC Bituminous Coal Trade (000 Tons)						
Exports:	March 07/06		% Chng	Jan - Mar 07/06		% Chng
Metallurgical	2,769	2,396	15.6%	6,718	6,565	2.3%
Steam	1,292	1,328	-2.7%	4,296	3,929	9.3%
Imports:	3,285	3,211	2.3%	8,786	8,958	-1.9%
EI Electric Output (Mil. Kwh)						
	Week Ended			Cumulative Jan 1 to		
	06/02/07	06/03/06	% Chng	06/02/07	06/03/06	% Chng
EI Electric Output (Mil. Kwh)	77,036	79,174	-2.7%	1,643,384	1,588,514	3.5%
AISI Raw Steel Output (000 Tons)	2,090	2,215	-5.6%	43,920	47,283	-7.1%
EIA U.S. PETROLEUM DATA						
4-Week Averages 000 Barrels per Day						
PETROLEUM SUPPLY:						
	Week Ending			Cumulative Daily Averages		
	06/01/07	06/01/06	% Chng	2007	2006	% Chng
Domestic Crude	5,184	5,100	1.6	5,166	5,056	2.2
Net Imports (Incl. SPR)	10,348	10,197	1.5	10,027	9,865	1.6
SPR Stocks W/D or Added	-28	-23	--	-11	-27	--
Other Stocks W/D or added	-43	226	--	-209	-112	--
Natural Gas Liquids Prod.	2,297	2,491	-7.8	2,297	2,168	6.0



NMA
THE AMERICAN RESOURCE

National Mining Association Web Site: [http:// www.nma.org](http://www.nma.org)

EIA Estimated Weekly U.S. Coal Production Overview (Thousand Short Tons)

Coal-Producing Region and State	Week Ended			Year to Date			52 Weeks Ended		
	6/2/2007	5/26/2007	6/3/2006	6/2/2007	6/2/2006	Percent Change	6/2/2007	6/3/2006	Percent Change
Alabama	385	385	343	8,774	8,734	0.5	19,005	20,354	-6.6
Alaska	26	26	28	563	605	-7.0	1,383	1,252	10.4
Arizona	148	148	123	3,567	3,286	8.6	8,482	9,958	-14.8
Arkansas	1	1	s	12	4	163.5	30	6	388.8
Colorado	734	736	844	16,178	14,952	8.2	37,451	36,698	2.1
Illinois	620	621	571	13,438	13,616	-1.3	31,973	31,358	2.0
Indiana	683	685	649	14,821	15,091	-1.8	35,384	34,960	1.2
Kansas	9	9	6	158	118	34.7	466	223	108.5
Kentucky Total	2,224	2,229	2,216	48,547	52,896	-8.2	115,796	121,453	-4.7
Eastern	1,669	1,673	1,737	36,780	41,083	-10.5	88,618	94,380	-6.1
Western	555	556	479	11,768	11,812	-0.4	27,178	27,073	0.4
Louisiana	90	44	88	1,055	1,562	-32.4	3,598	4,078	-11.8
Maryland	100	100	104	2,351	2,415	-2.6	4,985	5,314	-6.2
Mississippi	85	48	97	1,474	1,573	-6.3	3,683	3,662	0.6
Missouri	6	6	9	96	235	-59.2	254	596	-57.4
Montana	774	776	787	16,638	16,955	-1.9	41,409	40,802	1.5
New Mexico	483	485	544	10,509	10,986	-4.3	25,362	28,204	-10.1
North Dakota	505	506	490	11,820	12,458	-5.1	29,696	30,134	-1.5
Ohio	459	460	397	10,120	9,947	1.7	22,837	24,273	-5.9
Oklahoma	39	39	37	849	919	-7.6	1,924	1,997	-3.7
Pennsylvania Total	1,177	1,180	1,296	25,670	29,180	-12.0	62,416	67,890	-8.1
Anthracite	26	26	26	571	648	-11.9	1,435	1,645	-12.8
Bituminous	1,150	1,153	1,270	25,098	28,532	-12.0	60,982	66,244	-7.9
Tennessee	54	54	52	1,187	1,254	-5.3	2,736	3,090	-11.5
Texas	883	885	846	18,871	18,820	0.3	45,473	46,083	-1.3
Utah	447	448	465	9,601	11,330	-15.3	24,263	25,463	-4.7
Virginia	553	554	533	12,283	12,972	-5.3	29,125	28,768	1.2
Washington	0	0	58	0	1,313	-100.0	1,255	4,313	-70.9
West Virginia Total	2,841	2,848	2,879	62,495	67,015	-6.7	147,055	154,708	-4.9
Northern	880	882	841	19,514	19,511	*	42,660	44,005	-3.1
Southern	1,961	1,966	2,038	42,981	47,504	-9.5	104,395	110,703	-5.7
Wyoming	8,557	8,636	8,694	189,225	184,120	2.8	450,694	417,326	8.0
Appalachian Total	7,237	7,253	7,341	159,659	172,601	-7.5	376,777	398,778	-5.5
Interior Total	2,969	2,893	2,782	62,542	63,749	-1.9	149,964	150,037	*
Western Total	11,675	11,762	12,034	258,102	256,005	0.8	619,995	594,150	4.3
East of Miss. River	9,180	9,164	9,137	201,160	214,693	-6.3	474,996	495,831	-4.2
West of Miss. River	12,701	12,744	13,020	279,143	277,662	0.5	671,739	647,134	3.8
Bituminous and Lignite	21,855	21,881	22,131	479,732	491,707	-2.4	1,145,301	1,141,319	0.3
Anthracite	26	26	26	571	648	-11.9	1,435	1,645	-12.8
U.S. Total	21,881	21,908	22,156	480,303	492,355	-2.4	1,146,735	1,142,965	0.3
Railroad Cars Loaded	142,702	143,219	140,560	3,091,992	3,136,816	-1.4	7,410,533	7,239,247	2.4

Source: Energy information Administration

EIA Estimated Weekly and Monthly U.S. Coal Production Overview (Thousand Short Tons)

Coal-Producing Region and State	Week Ended		Year to Date		Month Ended		January - May		Percent Change
	6/2/2007	6/3/2006	6/2/2007	6/2/2006	May 2007	May 2006	2007	2006	
Alabama	385	343	8,774	8,734	1,682	1,597	8,631	8,593	0.4
Alaska	26	28	563	605	118	135	556	591	-5.9
Arizona	148	123	3,567	3,286	652	597	3,517	3,232	8.8
Arkansas	1	s	12	4	3	s	11	4	159.4
Colorado	734	844	16,178	14,952	3,234	3,950	15,972	14,672	8.9
Illinois	620	571	13,438	13,616	2,754	2,687	13,265	13,377	-0.8
Indiana	683	649	14,821	15,091	3,003	3,032	14,594	14,833	-1.6
Kansas	9	6	158	118	38	28	155	115	34.6
Kentucky Total	2,224	2,216	48,547	52,896	9,858	10,411	47,877	51,937	-7.8
Eastern	1,669	1,737	36,780	41,083	7,404	8,163	36,276	40,317	-10.0
Western	555	479	11,768	11,812	2,454	2,248	11,601	11,621	-0.2
Louisiana	90	88	1,055	1,562	160	431	1,030	1,532	-32.7
Maryland	100	104	2,351	2,415	445	490	2,324	2,367	-1.8
Mississippi	85	97	1,474	1,573	258	270	1,447	1,542	-6.2
Missouri	6	9	96	235	25	40	94	231	-59.5
Montana	774	787	16,638	16,955	3,404	3,679	16,421	16,707	-1.7
New Mexico	483	544	10,509	10,986	2,124	2,539	10,344	10,763	-3.9
North Dakota	505	490	11,820	12,458	2,213	2,282	11,634	12,252	-5.0
Ohio	459	397	10,120	9,947	2,013	1,851	9,963	9,792	1.7
Oklahoma	39	37	849	919	170	173	836	903	-7.4
Pennsylvania Total	1,177	1,296	25,670	29,180	5,184	6,063	25,277	28,635	-11.7
Anthracite	26	26	571	648	117	121	563	637	-11.6
Bituminous	1,150	1,270	25,098	28,532	5,067	5,942	24,714	27,999	-11.7
Tennessee	54	52	1,187	1,254	243	244	1,173	1,229	-4.5
Texas	883	846	18,871	18,820	3,861	3,937	18,609	18,569	0.2
Utah	447	465	9,601	11,330	1,992	2,194	9,477	11,123	-14.8
Virginia	553	533	12,283	12,972	2,443	2,502	12,115	12,754	-5.0
Washington	0	58	0	1,313	0	268	0	1,290	-100.0
West Virginia Total	2,841	2,879	62,495	67,015	12,558	13,499	61,618	65,829	-6.4
Northern	880	841	19,514	19,511	3,929	3,970	19,281	19,137	0.8
Southern	1,961	2,038	42,981	47,504	8,629	9,529	42,337	46,692	-9.3
Wyoming	8,557	8,694	189,225	184,120	37,795	36,924	186,793	181,485	2.9
Appalachian Total	7,237	7,341	159,659	172,601	31,971	34,411	157,376	169,515	-7.2
Interior Total	2,969	2,782	62,542	63,749	12,727	12,848	61,643	62,727	-1.7
Western Total	11,675	12,034	258,102	256,005	51,533	52,568	254,715	252,116	1.0
East of Miss. River	9,180	9,137	201,160	214,693	40,441	42,648	198,283	210,887	-6.0
West of Miss. River	12,701	13,020	279,143	277,662	55,790	57,179	275,450	273,470	0.7
Bituminous and Lignite	21,855	22,131	479,732	491,707	96,114	99,706	473,170	483,720	-2.2
Anthracite	26	26	571	648	117	121	563	637	-11.6
U.S. Total	21,881	22,156	480,303	492,355	96,231	99,827	473,733	484,357	-2.2
Railroad Cars Loaded	142,702	140,560	3,091,992	3,136,816	--	--	--	--	--

Source: Energy Information Administration



Volume 75 No. 22

OUTPUT FOR WEEK ENDED - Jun 02, 2007

Jun 06, 2007

The net available amount of electric energy distributed by the Total Electric Utility Industry+ for the week ended Saturday, Jun 02, 2007 was 77,036 gigawatthours (GWh), according to the Edison Electric Institute. This is equivalent to 190 on the weekly electric output index.

WEEKLY ELECTRIC OUTPUT BY GEOGRAPHIC DIVISION
(48 CONTIGUOUS STATES)

	Week Ended June 02		52 Weeks Ended June 02	
	GWh Output	% Increase Over Corresponding Week of 2006	GWh Output	% Increase Over Corresponding Period of 2006
New England	2,511	0.1	133,440	-1.1
Mid-Atlantic	9,120	2.0	452,356	-0.4
Central Industrial	13,729	-1.5	708,862	0.1
West Central	6,356	-11.4	346,978	-0.1
Southeast	20,826	-3.6	1,086,451	0.7
South Central	11,558	-5.9	601,721	0.7
Rocky Mountain	5,108	4.5	264,771	3.7
Pacific Northwest	2,681	5.7	154,765	2.9
Pacific Southwest	5,147	-3.1	294,394	1.5
Total United States	77,036	-2.7	4,043,738	0.7

WEEKLY ELECTRIC OUTPUT IN PREVIOUS WEEKS--GWh

Week Ended	2007	Week Ended	2006	% Inc. (07/06)	52 Weeks Ended	2007	% Inc. (07/06)
May 12	72,758	May 13	69,860	4.1	May 12	4,043,619	1.0
May 19	71,696	May 20	69,451	3.2	May 19	4,045,865	1.0
May 26	73,946	May 27	73,935	0.0	May 26	4,045,876	1.0
Jun 02	77,036	Jun 03	79,174	-2.7	Jun 02	4,043,738	0.7
Jun 02	1,643,384	Jun 03	1,588,514	3.5	YEAR TO DATE, FIRST 22 WEEKS		

WEEKLY ELECTRIC OUTPUT INDEX--TOTAL U.S.*
SEASONALLY ADJUSTED 1982 = 100

Week Ended	2007	Week Ended	2006	Week Ended	2005
May 12	183	May 13	175	May 14	172
May 19	178	May 20	171	May 21	176
May 26	183	May 27	183	May 28	181
Jun 02	190	Jun 03	196	Jun 04	166

* Excludes Alaska and Hawaii

+ Includes investor-owned companies, cooperatives and government-owned utilities.

Copyright © 2007 Edison Electric Institute. All rights reserved.

WEEKLY ELECTRIC OUTPUT BY GEOGRAPHIC DIVISION (48 CONTIGUOUS STATES)

	Week Ended			NMA CUMULATIVE JANUARY 1 to			52 Weeks Ended		
	2-Jun 2007 GWh Output	3-Jun 2006 GWh Output	% Increase Over Corresponding Week of 2006	2-Jun 2007 GWh Output	3-Jun 2006 GWh Output	% Increase Over Corresponding Week of 2006	2-Jun 2007 GWh Output	3-Jun 2006 GWh Output	% Increase Over Corresponding Week of 2006
New England	2,511	2,508	0.1%	55,583	53,967	3.0%	133,440	134,904	-1.1%
Mid-Atlantic	9,120	8,940	2.0%	186,021	177,413	4.9%	452,356	454,358	-0.4%
Central Industrial	13,729	13,933	-1.5%	296,537	282,562	4.9%	708,862	708,281	0.1%
West Central	6,356	7,174	-11.4%	141,793	138,964	2.0%	346,978	347,211	-0.1%
Southeast	20,826	21,601	-3.6%	441,605	427,245	3.4%	1,086,451	1,079,413	0.7%
South Central	11,558	12,276	-5.8%	232,313	228,964	1.5%	601,721	597,301	0.7%
Rocky Mountain	5,108	4,891	4.4%	102,538	98,391	4.2%	264,771	255,361	3.7%
Pacific Northwest	2,681	2,538	5.6%	68,962	65,570	5.2%	154,765	150,370	2.9%
Pacific Southwest	<u>5,147</u>	<u>5,313</u>	-3.1%	<u>118,031</u>	<u>115,440</u>	2.2%	<u>294,394</u>	<u>290,173</u>	1.5%
Total United States *	77,036	79,174	-2.7%	1,643,383	1,588,516	3.5%	4,043,738	4,017,372	0.7%

Notes: EEI output data are an estimate of electricity load made available for distribution derived as weekly net generation + purchases from non-utilities + net imports - exports - sales for resale. It is not meant to be a measure of electricity generation for the U.S. EEI survey data represent the majority of national distribution (large utilities, large government power projects, some independent and large municipal power projects). The remaining segment of the industry (smaller producers) is estimated. Non-utility generation is captured via direct sales to utilities.

* Excludes Alaska and Hawaii

** Less than one-tenth of one percent

SOURCE: Edison Electric Institute (EEI), *Weekly Electric Output Report*.

AMERICAN IRON AND STEEL INSTITUTE
 1140 Connecticut Avenue, Suite 705
 Washington, D.C. 20036

June 4, 2007

ESTIMATED WEEKLY RAW STEEL* PRODUCTION

<u>Period</u>	<u>Thousand Net Tons</u>	Percent		<u>Production by District</u>		
		<u>Change from Previous Period</u>	<u>Percent Capability Utilization**</u>	<u>Week Ending</u>		
				<u>Jun 2</u>	<u>May 26</u>	
<u>Week Ending</u>				North East Coast	131	134
June 2, 2007	2,090	0.6	87.4	Pgh/Youngstown	224	224
June 2, 2006	2,215	-5.6	92.5	Lake Erie	109	106
May 26, 2007	2,076	-0.4	86.8	Detroit	121	88
				Indiana/Chicago	534	537
				Midwest	242	254
				Southern	635	641
				Western	<u>94</u>	<u>92</u>
<u>Year-to-Date+</u>				Total	2090	2076
June 2, 2007	43,920	-7.1	84.6			
June 2, 2006	47,283	-	90.2			

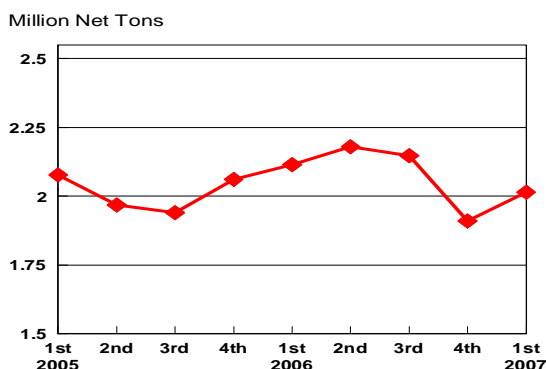
*Raw steel production tonnage included in this report is estimated based on a sampling of steel producers. Therefore, this report should be used primarily to assess production trends. The AISI production report "AIS 7," produced monthly and available by subscription, provides a more accurate summary of steel production based on data supplied by companies representing approximately 75% of U.S. production capacity.

+Includes revisions for previous months

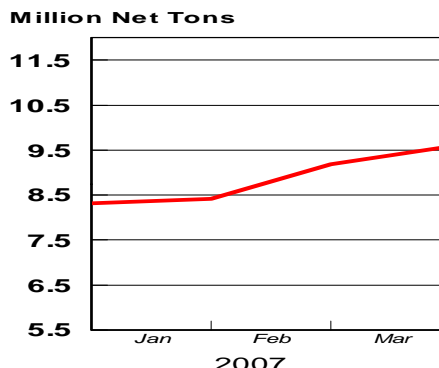
NOTE: Capability for the First Quarter 2007 is approximately 31.2 million net tons vs 30.5 million net tons for the same period last year, and 30.7 million tons for the fourth quarter of 2006.

Capability -	2003 approx.	2.3 million tons/week
	2004	2.2
	2005	2.3
	2006	2.4
	2007	2.4

Average Weekly Raw Steel Production

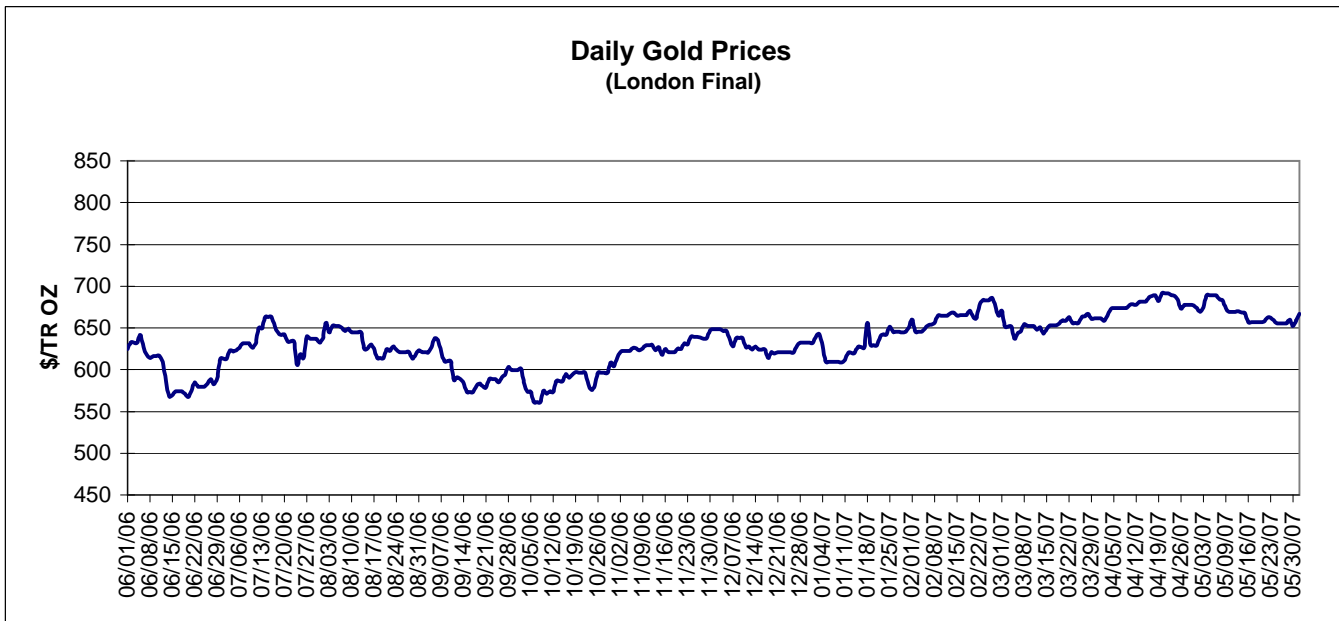
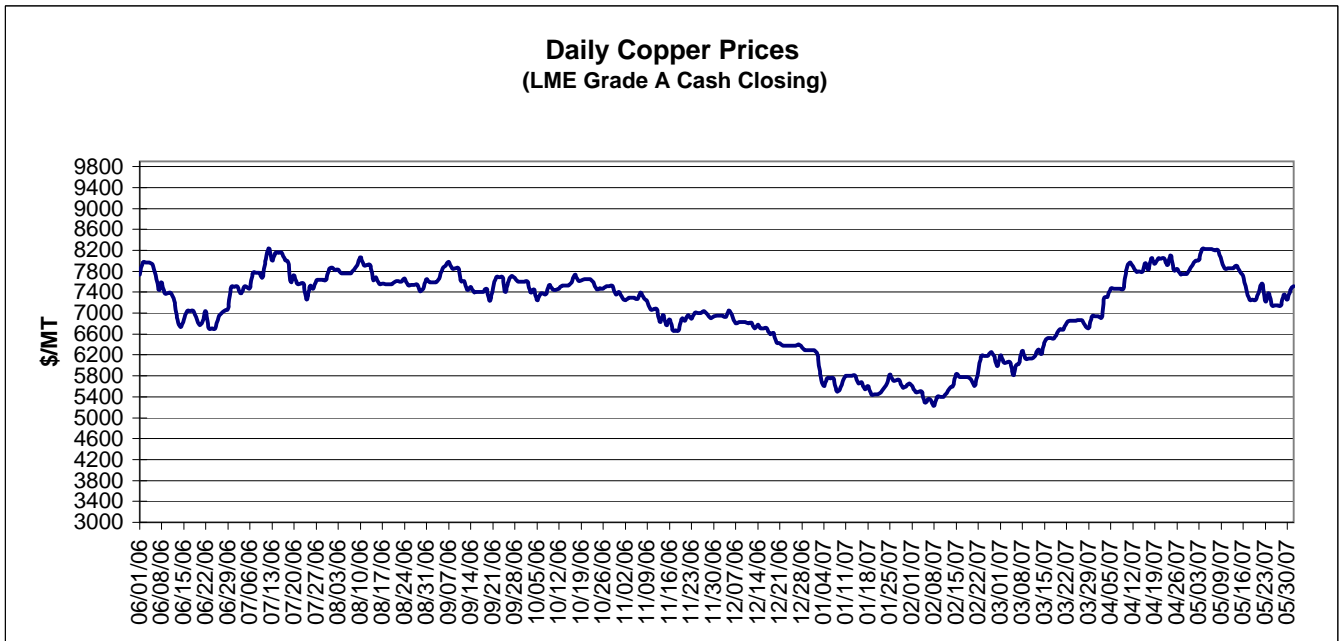


MONTHLY RAW STEEL PRODUCTION



*Steel in the first solid state after melting suitable for further processing or sale, including ingots, steel for castings and strand or pressure cast blooms, slabs, or other product forms.

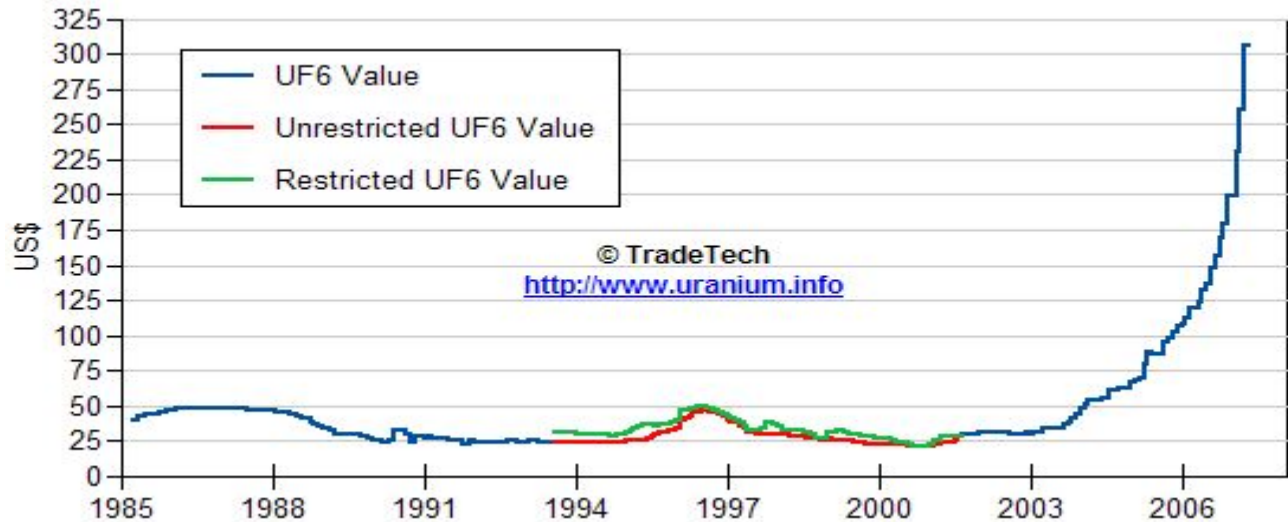
** Based on tonnage capability to produce raw steel for a sustained full order book.



Data reflect closings on weekends and holidays.

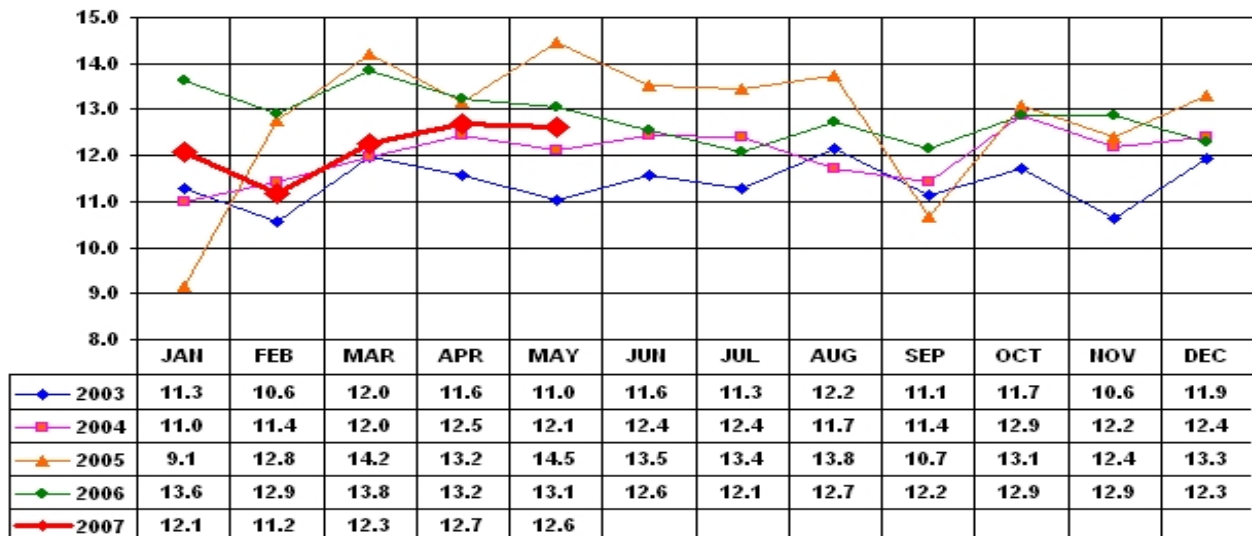
Source: Platts Metals Week

Trade Tech's Uranium (UF6) Monthly Spot Prices (US\$/kg as UF6)



Source: Trade Tech, Uranium Info Website – <http://www.uranium.info>

Coal and Coke Monthly Tonnage Indicator for Internal U.S. Waterways



Source: U.S. Army Corps of engineers, Waterborne Commerce Statistics Center