
National Mining Association

Weekly Statistical Summary

July 11, 2008 Edition
(Data for Week Ending July 5, 2008)

Prepared by
National Mining Association



Suite 500 East, 101 Constitution Avenue, NW
Washington, DC, 20001
Phone (202) 463-2600
Visit us at <http://www.nma.org>

NMA Weekly Statistical Summary

Vol. 46, No. 27
Dated 07/11/08

PRODUCTION, CONSUMPTION & TRADE						
	Week Ended			* Cumulative Jan 1 to		
	07/05/08	07/07/07	% Chng	07/05/08	07/05/07	% Chng
EIA Coal Production (000 Tons):						
Week Ended/Year to Date	19,562	19,537	0.1%	590,045	585,417	0.8%
52 Weeks Ended	1,145,415	1,149,603	-0.4%			
* Due to leap year, 2008 cumulative reflects one extra day of tonnage.						
	June 08/07		% Chng	Jan - June 08/07		% Chng
Month Ended -- June	90,912	95,566	-4.9%	575,581	571,728	0.7%
MONTH ENDED AND CUMULATIVE NUMBERS ARE PRELIMINARY AND SUBJECT TO CHANGE						
DOC Bituminous Coal Trade (000 Tons)						
	April 08/07		% Chng	Jan - Apr 08/07		% Chng
Exports:						
Metallurgical	4,300	2,405	78.8%	13,400	9,124	46.9%
Steam	3,621	2,415	49.9%	10,221	6,712	52.3%
Imports:	2,985	2,687	11.1%	10,626	11,473	-7.4%
	Week Ended			* Cumulative Jan 1 to		
	07/05/08	07/07/07	% Chng	07/05/08	07/07/07	% Chng
EEl Electric Output (Mil. Kwh)	82,135	81,057	1.3%	2,066,226	2,054,727	0.6%
AISI Raw Steel Output (000 Tons)	2,096	2,059	1.8%	56,505	55,176	2.4%
EIA U.S. PETROLEUM DATA						
4-Week Averages 000 Barrels per Day						
	Week Ending			Cumulative Daily Averages		
	07/04/08	07/04/07	% Chng	2008	2007	% Chng
PETROLEUM SUPPLY:						
Domestic Crude	5,087	5,137	-1.0	5,107	5,186	-1.5
Net Imports (Incl. SPR)	10,029	9,925	1.0	9,736	9,989	-2.5
SPR Stocks W/D or Added	-61	0	--	-50	-9	--
Other Stocks W/D or added	295	-133	--	-20	-223	--
Natural Gas Liquids Prod.	2,210	2,339	-5.5	2,270	2,351	-3.4



NMA

THE AMERICAN RESOURCE National Mining Association Web Site: [http:// www.nma.org](http://www.nma.org)

EIA Estimated Weekly U.S. Coal Production Overview (Thousand Short Tons)

Coal-Producing Region and State	Week Ended			Year to Date			52 Weeks Ended		
	7/5/2008	6/28/2008	7/7/2007	7/5/2008	7/5/2007	Percent Change	7/5/2008	7/7/2007	Percent Change
Alabama	311	395	300	10,903	9,986	9.2	20,328	18,759	8.4
Alaska	22	28	11	753	804	-6.4	1,269	1,489	-14.7
Arizona	127	161	130	3,628	4,146	-12.5	7,419	8,230	-9.8
Arkansas	1	1	2	35	37	-5.5	80	52	53.9
Colorado	652	829	585	18,423	18,499	-0.4	36,143	36,976	-2.3
Illinois	481	611	478	16,460	18,975	-13.3	30,208	35,271	-14.4
Indiana	565	717	572	18,272	17,792	2.7	35,293	35,021	0.8
Kansas	5	6	6	206	226	-8.6	399	486	-17.9
Kentucky Total	1,915	2,432	1,781	62,064	60,248	3.0	116,809	116,887	-0.1
Eastern	1,446	1,836	1,338	46,211	45,701	1.1	87,369	89,207	-2.1
Western	470	596	443	15,853	14,547	9.0	29,441	27,680	6.4
Louisiana	74	93	70	1,981	1,205	64.4	3,883	3,333	16.5
Maryland	33	42	33	1,177	1,166	0.9	2,303	3,280	-29.8
Mississippi	107	107	85	1,832	1,845	-0.7	3,506	3,637	-3.6
Missouri	3	4	4	119	119	-0.4	234	240	-2.5
Montana	676	859	720	23,170	20,518	12.9	45,839	41,539	10.4
New Mexico	400	508	331	11,194	13,173	-15.0	22,358	26,022	-14.1
North Dakota	455	577	487	14,542	14,841	-2.0	29,128	30,352	-4.0
Ohio	376	478	369	12,579	10,995	14.4	24,033	21,913	9.7
Oklahoma	29	37	26	896	857	4.5	1,678	1,757	-4.5
Pennsylvania Total	1,027	1,304	967	34,874	34,824	0.1	64,917	65,605	-1.0
Anthracite	19	25	23	869	812	7.0	1,618	1,554	4.1
Bituminous	1,008	1,280	944	34,005	34,012	*	63,299	64,051	-1.2
Tennessee	42	54	39	1,338	1,369	-2.3	2,613	2,690	-2.9
Texas	628	798	684	20,632	20,577	0.3	41,801	43,402	-3.7
Utah	382	485	332	13,099	12,698	3.2	24,616	24,984	-1.5
Virginia	386	490	361	12,096	14,629	-17.3	22,818	28,750	-20.6
Washington	--	--	--	--	--	--	0	1,051	-100.0
West Virginia Total	2,530	3,212	2,381	81,862	80,318	1.9	154,325	151,831	1.6
Northern	656	833	638	22,608	22,790	-0.8	41,869	41,722	0.4
Southern	1,873	2,379	1,743	59,254	57,528	3.0	112,457	110,109	2.1
Wyoming	8,334	7,539	8,782	227,909	225,570	1.0	453,412	446,049	1.7
Appalachian Total	6,152	7,812	5,789	201,040	198,987	1.0	378,707	382,034	-0.9
Interior Total	2,362	2,970	2,370	76,287	76,179	0.1	146,523	150,878	-2.9
Western Total	11,048	10,985	11,378	312,717	310,250	0.8	620,185	616,691	0.6
East of Miss. River	7,774	9,843	7,368	253,459	252,146	0.5	477,155	483,643	-1.3
West of Miss. River	11,788	11,924	12,169	336,586	333,271	1.0	668,261	665,961	0.3
Bituminous and Lignite	19,542	21,742	19,514	589,176	584,605	0.8	1,143,797	1,148,049	-0.4
Anthracite	19	25	23	869	812	7.0	1,618	1,554	4.1
U.S. Total	19,562	21,767	19,537	590,045	585,417	0.8	1,145,415	1,149,603	-0.4
Railroad Cars Loaded	121,959	142,450	122,217	3,894,419	3,789,084	2.8	7,509,367	7,398,421	1.5

Source: Energy Information Administration

EIA Estimated Monthly U.S. Coal Production Overview (Thousand Short Tons)

Coal-Producing Region and State	Week Ended		Year to Date		Month Ended		January - June		Percent Change
	7/5/2008	7/7/2007	7/5/2008	7/5/2007	June 2008	June 2007	2008	2007	
Alabama	311	300	10,903	9,986	1,575	1,589	10,658	9,797	8.8
Alaska	22	11	753	804	113	115	736	796	-7.6
Arizona	127	130	3,628	4,146	602	693	3,529	4,061	-13.1
Arkansas	1	2	35	37	5	7	34	36	-4.9
Colorado	652	585	18,423	18,499	3,266	3,418	17,951	18,079	-0.7
Illinois	481	478	16,460	18,975	2,516	3,001	16,103	18,630	-13.6
Indiana	565	572	18,272	17,792	2,874	2,969	17,840	17,410	2.5
Kansas	5	6	206	226	29	40	202	222	-8.8
Kentucky Total	1,915	1,781	62,064	60,248	9,734	9,870	60,611	59,003	2.7
Eastern	1,446	1,338	46,211	45,701	7,280	7,598	45,110	44,767	0.8
Western	470	443	15,853	14,547	2,454	2,272	15,501	14,236	8.9
Louisiana	74	70	1,981	1,205	349	274	1,928	1,155	66.9
Maryland	33	33	1,177	1,166	179	183	1,152	1,142	0.9
Mississippi	107	85	1,832	1,845	348	327	1,754	1,787	-1.9
Missouri	3	4	119	119	18	20	116	117	-0.8
Montana	676	720	23,170	20,518	3,517	3,365	22,683	20,000	13.4
New Mexico	400	331	11,194	13,173	2,013	2,555	10,884	12,956	-16.0
North Dakota	455	487	14,542	14,841	2,285	2,338	14,184	14,533	-2.4
Ohio	376	369	12,579	10,995	1,928	1,759	12,290	10,752	14.3
Oklahoma	29	26	896	857	149	145	873	840	4.0
Pennsylvania Total	1,027	967	34,874	34,824	5,257	5,694	34,081	34,179	-0.3
Anthracite	19	23	869	812	114	134	854	796	7.3
Bituminous	1,008	944	34,005	34,012	5,143	5,560	33,227	33,383	-0.5
Tennessee	42	39	1,338	1,369	215	211	1,306	1,340	-2.6
Texas	628	684	20,632	20,577	3,296	3,467	20,179	20,095	0.4
Utah	382	332	13,099	12,698	1,957	2,147	12,813	12,458	2.9
Virginia	386	361	12,096	14,629	1,961	2,412	11,804	14,378	-17.9
Washington	--	--	--	--	--	--	--	--	--
West Virginia Total	2,530	2,381	81,862	80,318	12,847	13,156	79,943	78,678	1.6
Northern	656	638	22,608	22,790	3,478	3,567	22,120	22,321	-0.9
Southern	1,873	1,743	59,254	57,528	9,370	9,588	57,823	56,357	2.6
Wyoming	8,334	8,782	227,909	225,570	33,878	35,813	221,926	219,283	1.2
Appalachian Total	6,152	5,789	201,040	198,987	31,242	32,601	196,345	195,034	0.7
Interior Total	2,362	2,370	76,287	76,179	12,038	12,522	74,529	74,528	*
Western Total	11,048	11,378	312,717	310,250	47,633	50,443	304,707	302,166	0.8
East of Miss. River	7,774	7,368	253,459	252,146	39,434	41,169	247,542	247,097	0.2
West of Miss. River	11,788	12,169	336,586	333,271	51,479	54,397	328,039	324,631	1.0
Bituminous and Lignite	19,542	19,514	589,176	584,605	90,798	95,432	574,727	570,932	0.7
Anthracite	19	23	869	812	114	134	854	796	7.3
U.S. Total	19,562	19,537	590,045	585,417	90,912	95,566	575,581	571,728	0.7
Railroad Cars Loaded	121,959	122,217	3,894,419	3,789,084	--	--	--	--	--

Source: Energy Information Administration



Volume 76 No. 27

OUTPUT FOR WEEK ENDED - Jul 05, 2008

Jul 09, 2008

The net available amount of electric energy distributed by the Total Electric Utility Industry+ for the week ended Saturday, Jul 05, 2008 was 82,135 gigawatthours (GWh), according to the Edison Electric Institute. This is equivalent to 177 on the weekly electric output index.

WEEKLY ELECTRIC OUTPUT BY GEOGRAPHIC DIVISION
(48 CONTIGUOUS STATES)

	Week Ended July 05		52 Weeks Ended July 05	
	GWh Output	% Increase Over Corresponding Week of 2007	GWh Output	% Increase Over Corresponding Period of 2007
New England	2,728	10.9	133,152	0.1
Mid-Atlantic	9,578	11.3	456,352	0.9
Central Industrial	12,794	-2.4	718,512	1.0
West Central	6,781	-8.1	350,049	0.6
Southeast	21,511	-0.4	1,110,999	2.1
South Central	13,494	9.0	609,393	2.0
Rocky Mountain	6,433	-2.9	277,359	4.1
Pacific Northwest	2,931	10.0	166,880	7.3
Pacific Southwest	5,885	-5.7	289,415	-1.4
Total United States	82,135	1.3	4,112,111	1.6

WEEKLY ELECTRIC OUTPUT IN PREVIOUS WEEKS--GWh

Week Ended	2008	Week Ended	2007	% Inc. (08/07)	52 Weeks Ended	2008	% Inc. (08/07)
Jun 14	87,195	Jun 16	81,410	7.1	Jun 14	4,113,911	1.7
Jun 21	82,466	Jun 23	84,607	-2.5	Jun 21	4,111,770	1.7
Jun 28	84,580	Jun 30	85,316	-0.9	Jun 28	4,111,033	1.6
Jul 05	82,135	Jul 07	81,057	1.3	Jul 05	4,112,111	1.6
Jul 05	2,066,226	Jul 07	2,054,727	0.6	YEAR TO DATE, FIRST 27 WEEKS		

WEEKLY ELECTRIC OUTPUT INDEX--TOTAL U.S.*
SEASONALLY ADJUSTED 1982 = 100

Week Ended	2008	Week Ended	2007	Week Ended	2006
Jun 14	191	Jun 16	181	Jun 17	181
Jun 21	180	Jun 23	188	Jun 24	193
Jun 28	180	Jun 30	183	Jul 01	181
Jul 05	177	Jul 07	177	Jul 08	181

* Excludes Alaska and Hawaii.

+ Includes investor-owned companies, cooperatives and government-owned utilities.

Copyright © 2008 Edison Electric Institute. All rights reserved.

WEEKLY ELECTRIC OUTPUT BY GEOGRAPHIC DIVISION (48 CONTIGUOUS STATES)

	Week Ended			NMA CUMULATIVE JANUARY WEEK ONE TO			52 Weeks Ended		
	5-Jul 2008 GWh Output	7-Jul 2007 GWh Output	% Increase Over Corresponding Week of 2007	5-Jul 2008 GWh Output	7-Jul 2007 GWh Output	% Increase Over Corresponding Week of 2007	5-Jul 2008 GWh Output	7-Jul 2007 GWh Output	% Increase Over Corresponding Week of 2007
New England	2,728	2,460	10.9%	67,170	68,464	-1.9%	133,152	132,977	0.1%
Mid-Atlantic	9,578	8,604	11.3%	228,884	231,200	-1.0%	456,352	452,311	0.9%
Central Industrial	12,794	13,115	-2.4%	362,563	366,189	-1.0%	718,512	711,501	1.0%
West Central	6,781	7,376	-8.1%	175,718	177,883	-1.2%	350,049	348,078	0.6%
Southeast	21,511	21,594	-0.4%	556,854	552,515	0.8%	1,110,999	1,087,771	2.1%
South Central	13,494	12,376	9.0%	308,180	296,922	3.8%	609,393	597,560	2.0%
Rocky Mountain	6,433	6,624	-2.9%	132,354	132,424	-0.1%	277,359	266,415	4.1%
Pacific Northwest	2,931	2,665	10.0%	90,185	82,385	9.5%	166,880	155,468	7.3%
Pacific Southwest	5,885	6,243	-5.7%	144,319	146,744	-1.7%	289,415	293,504	-1.4%
Total United States *	<u>82,135</u>	<u>81,057</u>	1.3%	<u>2,066,227</u>	<u>2,054,726</u>	0.6%	<u>4,112,111</u>	<u>4,045,585</u>	1.6%

Notes: EEI output data are an estimate of electricity load made available for distribution derived as weekly net generation + purchases from non-utilities + net imports - exports - sales for resale. It is not meant to be a measure of electricity generation for the U.S. EEI survey data represent the majority of national distribution (large utilities, large government power projects, some independent and large municipal power projects). The remaining segment of the industry (smaller producers) is estimated. Non-utility generation is captured via direct sales to utilities.

* Excludes Alaska and Hawaii

** Less than one-tenth of one percent

SOURCE: Edison Electric Institute (EEI), *Weekly Electric Output Report*.

AMERICAN IRON AND STEEL INSTITUTE
 1140 Connecticut Avenue, Suite 705
 Washington, D.C. 20036

July 7, 2008

ESTIMATED WEEKLY RAW STEEL * PRODUCTION

Period	Thousand Net Tons	Percent Change from Previous Period	Percent Capability Utilization**	Production by District		
				Week Ending July 5	Week Ending June 28	
Week Ending				North East Coast	178	185
				Pgh/Youngstown	213	217
				Lake Erie	91	90
				Detroit	115	103
				Indiana/Chicago	463	492
				Midwest	265	271
				Southern	675	658
				Western	96	92
				Total	2,096	2,108
Year-to-Date+						
July 5, 2008	2,096	-0.6	87.8			
July 5, 2007	2,059	1.8	87.0			
June 28, 2008	2,108	1.5	87.0			
July 5, 2008	56,505	2.4	88.7			
July 5, 2007	55,176	-	85.9			

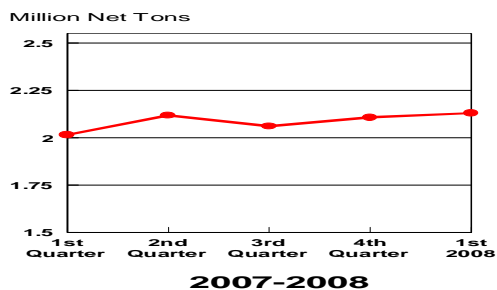
*Raw steel production tonnage included in this report is estimated based on a sampling of steel producers. Therefore, this report should be used primarily to assess production trends. The AISI production report "AIS 7," produced monthly and available by subscription, provides a more accurate summary of steel production based on data supplied by companies representing approximately 75% of U.S. production capacity.

+ Includes revisions for previous months

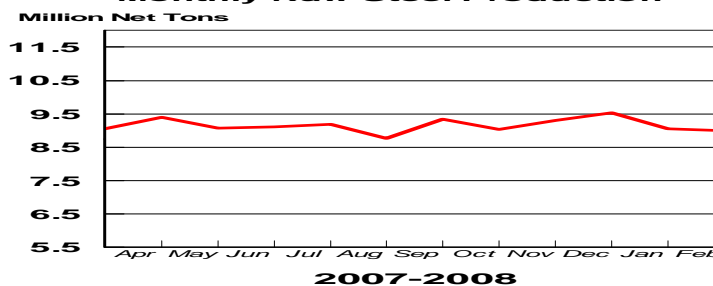
NOTE: Capacity for the Fourth Quarter 2007 is approximately 31.3 million net tons vs 30.7 million net tons for the same period last year, and 30.1 million tons for the third quarter of 2007.

Capacity -	2003 approx.	2004	2005	2006	2007
	2.3 million tons/week	2.2	2.3	2.4	2.4

Average Weekly Raw Steel Production

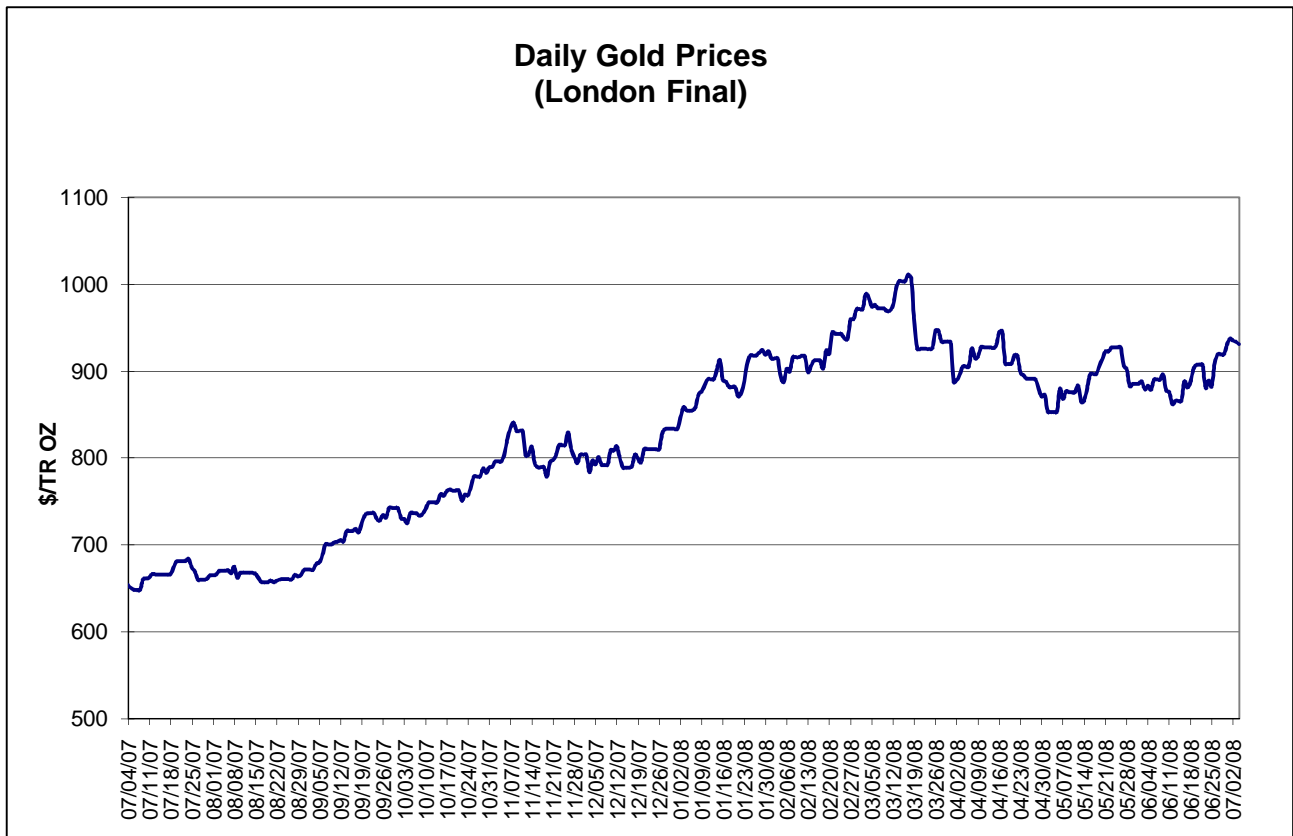
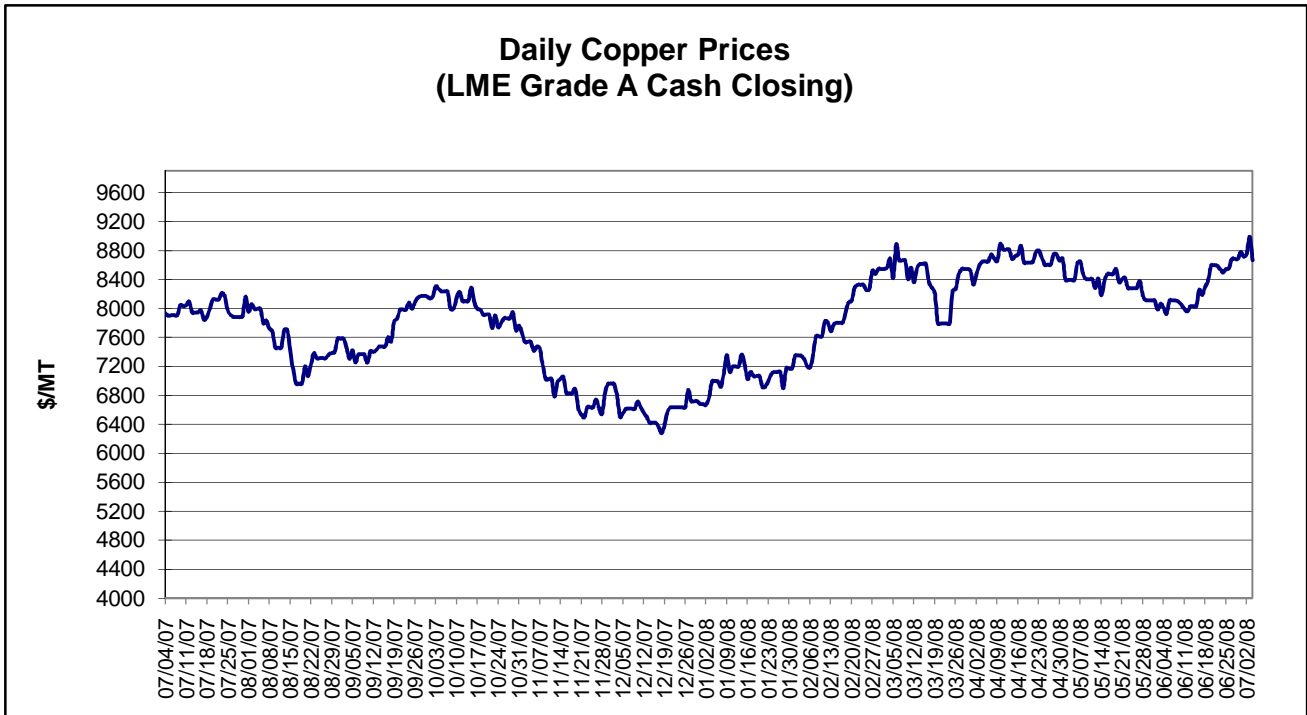


Monthly Raw Steel Production



*Steel in the first solid state after melting suitable for further processing or sale, including ingots, steel for castings and strand or pressure cast blooms, slabs, or other product forms.

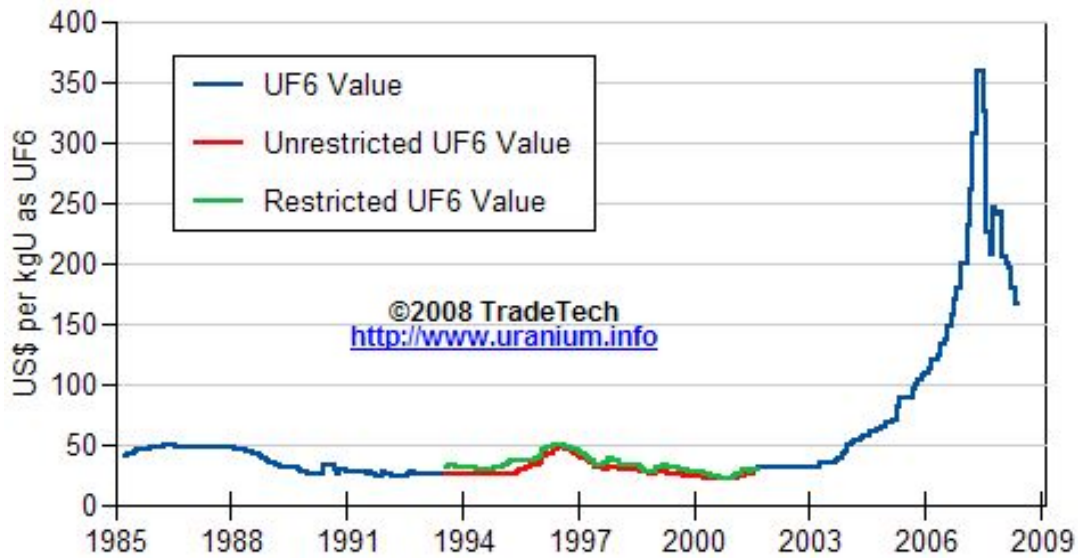
** Based on tonnage capability to produce raw steel for a sustained full order book.



Data reflect closings on weekends and holidays.

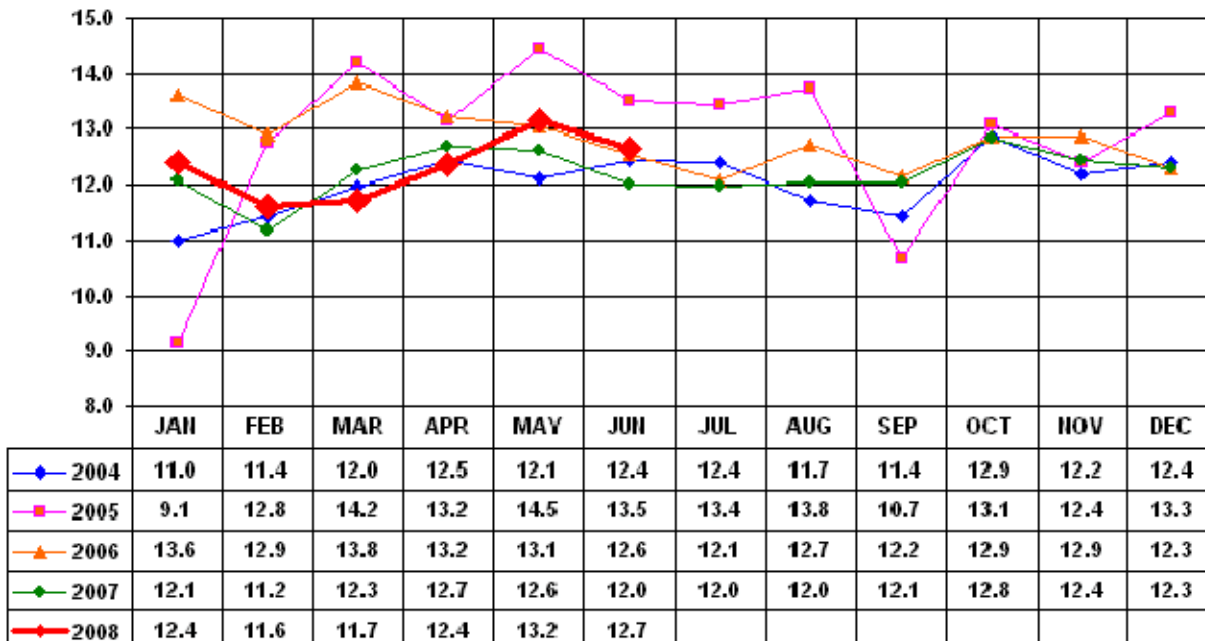
Source: Platts Metals Week

Trade Tech's Uranium (UF6) Monthly Spot Prices (US\$/kg as UF6)



Source: Trade Tech, Uranium Info Website – <http://www.uranium.info>

Coal and Coke Monthly Tonnage Indicator for Internal U.S. Waterways



Source: U.S. Army Corps of Engineers, Waterborne Commerce Statistics Center

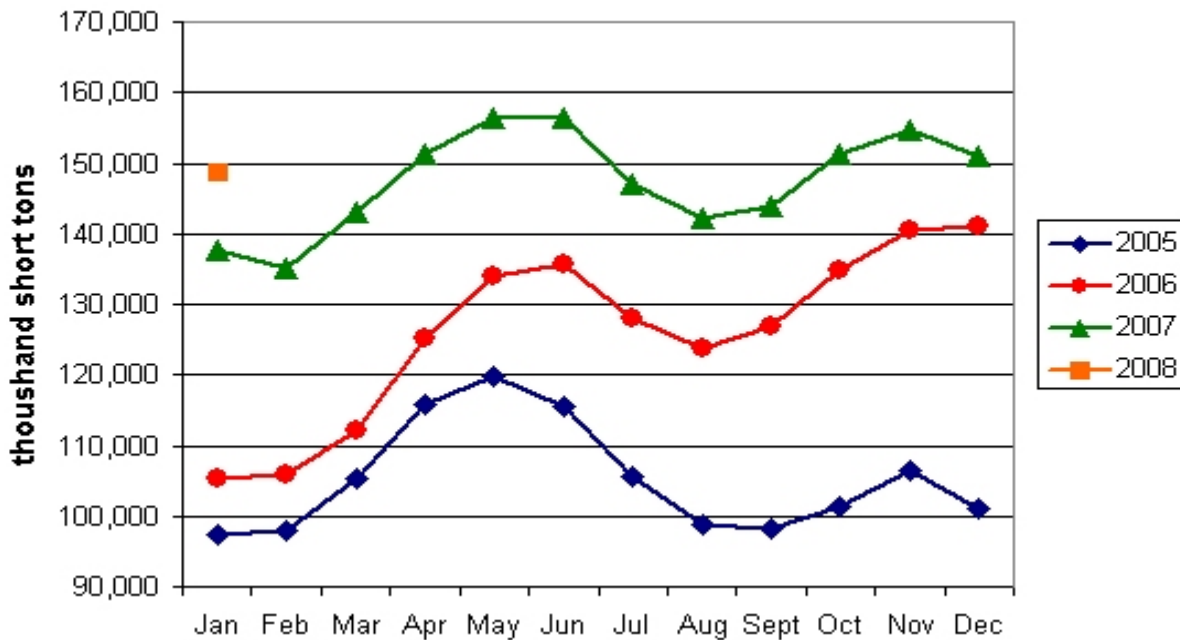
EIA Weekly Spot Coal Prices

The following average spot coal prices appear in the graphic below, for the previous and most recent weeks: (Dollars per Short Ton)

Week Ended	Central Appalachia 12,500 Btu, 1.2 SO2	Northern Appalachia 13,000 Btu, <3.0 SO2	Illinois Basin 11,800 Btu, 5.0 SO2	Powder River Basin 8,800 Btu, 0.8 SO2	Uinta Basin 11,700 Btu, 0.8 SO2
30-May-08	\$108.25	\$105.00	\$65.00	\$14.10	\$44.00
06-June-08	\$108.25	\$105.00	\$65.00	\$13.30	\$44.00
13-June-08	\$117.60	\$108.50	\$65.00	\$13.30	\$54.00
20-June-08	\$117.60	\$118.00	\$65.00	\$13.25	\$54.00
27-June-08	\$117.60	\$118.00	\$65.00	\$12.75	\$54.00
03-July-08	\$117.60	\$130.00	\$70.00	\$14.00	\$54.00

Source: Energy Information Administration (from Platts *Coal Outlook*, "Weekly Price Survey")

EIA Electric Power Sector Coal Stocks



Source: Energy Information Administration

USGS Production of Selected Mineral Commodities	2008 First Quarter	2007 First Quarter	Percent Change
Aluminum, secondary (000 Mt.)	240.0	243.0	-1%
Cement (Mil. Mt.)	17.2	18.0	-4%
Gypsum (Mil. Mt.) *	4.7	5.4	-13%
Iron Ore (Mil. Mt.)	12.9	11.4	13%
Phosphate rock (Mil. Mt.)	7.6	7.1	7%
Sand & gravel, construction (Mil. Mt.)	184.0	194.0	-5%
Soda ash (Mil. Mt.)	2.8	2.7	4%
Stone, crushed (Mil. Mt.)	280.0	263.0	6%
Zinc (000 Mt.)	207.0	181.0	14%

Source: U.S. Geological Survey, Mineral Industry Surveys, *U.S. Production of Selected Mineral Commodities in the First Quarter 2008*

* Revised June 16, 2008. Note - data are preliminary.