

---

National Mining Association

# Weekly Statistical Summary

July 13, 2007 Edition  
(Data for Week Ending July 7, 2007)

Prepared by  
National Mining Association



Suite 500 East, 101 Constitution Avenue, NW  
Washington, DC, 20001  
Phone (202) 463-2600  
Visit us at <http://www.nma.org>

# NMA Weekly Statistical Summary

Vol. 45, No. 27  
Dated 07/13/07

PRODUCTION, CONSUMPTION & TRADE						
	Week Ended			Cumulative Jan 1 to		
	07/07/07	07/08/06	% Chng	07/07/07	07/08/06	% Chng
<b>EIA Coal Production (000 Tons):</b>						
Week Ended/Year to Date	19,635	21,161	-7.2%	587,824	601,791	-2.3%
52 Weeks Ended	1,144,921	1,146,117	-0.1%			
<b>Month Ended -- June</b>						
	94,813	97,141	-2.4%	568,189	581,498	-2.3%
MONTH ENDED AND CUMULATIVE NUMBERS ARE PRELIMINARY AND SUBJECT TO CHANGE						
<b>DOC Bituminous Coal Trade (000 Tons)</b>						
<b>Exports:</b>	<b>April 07/06</b>			<b>Jan - Apr 07/06</b>		
			% Chng			% Chng
Metallurgical	2,405	2,047	17.5%	9,124	8,612	5.9%
Steam	2,415	1,401	72.4%	6,712	5,331	25.9%
<b>Imports:</b>	2,687	3,030	-11.3%	11,473	11,987	-4.3%
<b>Week Ended</b>						
	<b>07/07/07</b>	<b>07/08/06</b>	<b>% Chng</b>	<b>07/07/07</b>	<b>07/08/06</b>	<b>% Chng</b>
<b>EEl Electric Output (Mil. Kwh)</b>	81,057	81,685	-0.8%	2,054,727	1,998,009	2.8%
<b>AISI Raw Steel Output (000 Tons)</b>	2,102	2,087	0.7%	54,313	58,198	-6.7%
<b>EIA U.S. PETROLEUM DATA</b>						
4-Week Averages 000 Barrels per Day						
<b>Week Ending</b>						
	<b>07/06/07</b>	<b>07/06/06</b>	<b>% Chng</b>	<b>Cumulative Daily Averages</b>		
<b>PETROLEUM SUPPLY:</b>				<b>2007</b>	<b>2006</b>	<b>% Chng</b>
Domestic Crude	5,130	5,211	-1.6	5,175	5,085	1.8
Net Imports (Incl. SPR)	10,501	10,557	-0.5	10,107	9,999	1.1
SPR Stocks W/D or Added	0	21	--	-9	-18	--
Other Stocks W/D or added	-363	151	--	-223	-63	--
Natural Gas Liquids Prod.	2,414	2,080	16.1	2,338	2,148	8.8



**NMA**  
THE AMERICAN RESOURCE

National Mining Association Web Site: [http:// www.nma.org](http://www.nma.org)

## EIA Estimated Weekly U.S. Coal Production Overview (Thousand Short Tons)

Coal-Producing Region and State	Week Ended			Year to Date			52 Weeks Ended		
	7/7/2007	6/30/2007	7/8/2006	7/7/2007	7/7/2006	Percent Change	7/7/2007	7/8/2006	Percent Change
Alabama	319	375	316	10,504	10,308	1.9	19,166	19,892	-3.7
Alaska	22	26	22	818	743	10.1	1,500	1,256	19.4
Arizona	123	144	143	4,094	4,160	-1.6	8,133	9,689	-16.1
Arkansas	1	1	s	26	8	212.0	40	10	305.0
Colorado	610	716	659	18,173	17,933	1.3	36,486	36,067	1.2
Illinois	515	604	591	18,166	16,526	9.9	33,790	31,109	8.6
Indiana	568	666	621	18,530	18,352	1.0	35,837	35,025	2.3
Kansas	7	8	8	227	167	36.3	485	254	90.8
<b>Kentucky Total</b>	<b>1,848</b>	<b>2,167</b>	<b>2,065</b>	<b>60,427</b>	<b>64,493</b>	<b>-6.3</b>	<b>116,091</b>	<b>121,530</b>	<b>-4.5</b>
Eastern	1,386	1,626	1,601	45,189	50,269	-10.1	87,852	94,484	-7.0
Western	461	541	464	15,239	14,224	7.1	28,239	27,046	4.4
Louisiana	75	88	85	1,390	1,996	-30.4	3,499	4,090	-14.5
Maryland	83	97	108	1,981	2,945	-32.7	4,085	5,324	-23.3
Mississippi	86	86	95	1,899	2,017	-5.9	3,664	3,730	-1.8
Missouri	5	6	3	139	274	-49.2	259	582	-55.5
Montana	643	754	752	20,802	20,911	-0.5	41,621	41,017	1.5
New Mexico	402	471	441	12,216	13,117	-6.9	24,951	27,573	-9.5
North Dakota	420	492	557	14,770	14,992	-1.5	30,101	30,084	0.1
Ohio	381	447	393	11,987	11,873	1.0	22,778	23,861	-4.5
Oklahoma	32	38	33	953	1,103	-13.7	1,844	2,006	-8.1
<b>Pennsylvania Total</b>	<b>978</b>	<b>1,147</b>	<b>1,079</b>	<b>33,826</b>	<b>35,546</b>	<b>-4.8</b>	<b>64,234</b>	<b>68,104</b>	<b>-5.7</b>
Anthracite	22	26	28	770	780	-1.2	1,502	1,612	-6.8
Bituminous	956	1,121	1,052	33,056	34,766	-4.9	62,732	66,492	-5.7
Tennessee	45	53	49	1,465	1,492	-1.8	2,776	3,017	-8.0
Texas	733	860	867	22,133	22,797	-2.9	44,755	45,870	-2.4
Utah	371	435	409	12,307	13,801	-10.8	24,502	25,584	-4.2
Virginia	459	538	517	14,927	15,809	-5.6	28,933	28,971	-0.1
Washington	0	0	48	0	1,519	-100.0	1,051	3,987	-73.6
<b>West Virginia Total</b>	<b>2,360</b>	<b>2,768</b>	<b>2,579</b>	<b>79,724</b>	<b>81,306</b>	<b>-1.9</b>	<b>150,018</b>	<b>154,182</b>	<b>-2.7</b>
Northern	731	857	690	24,226	23,619	2.6	43,270	44,072	-1.8
Southern	1,630	1,911	1,888	55,498	57,687	-3.8	106,748	110,110	-3.1
Wyoming	8,550	9,106	8,720	226,341	227,602	-0.6	444,324	423,302	5.0
<b>Appalachian Total</b>	<b>6,012</b>	<b>7,051</b>	<b>6,643</b>	<b>199,601</b>	<b>209,548</b>	<b>-4.7</b>	<b>379,842</b>	<b>397,835</b>	<b>-4.5</b>
<b>Interior Total</b>	<b>2,483</b>	<b>2,896</b>	<b>2,768</b>	<b>78,702</b>	<b>77,464</b>	<b>1.6</b>	<b>152,411</b>	<b>149,722</b>	<b>1.8</b>
<b>Western Total</b>	<b>11,141</b>	<b>12,144</b>	<b>11,750</b>	<b>309,521</b>	<b>314,778</b>	<b>-1.7</b>	<b>612,668</b>	<b>598,560</b>	<b>2.4</b>
<b>East of Miss. River</b>	<b>7,641</b>	<b>8,947</b>	<b>8,413</b>	<b>253,436</b>	<b>260,667</b>	<b>-2.8</b>	<b>481,371</b>	<b>494,746</b>	<b>-2.7</b>
<b>West of Miss. River</b>	<b>11,994</b>	<b>13,144</b>	<b>12,748</b>	<b>334,389</b>	<b>341,124</b>	<b>-2.0</b>	<b>663,550</b>	<b>651,371</b>	<b>1.9</b>
Bituminous and Lignite	19,614	22,065	21,133	587,054	601,011	-2.3	1,143,419	1,144,505	-0.1
Anthracite	22	26	28	770	780	-1.2	1,502	1,612	-6.8
<b>U.S. Total</b>	<b>19,635</b>	<b>22,091</b>	<b>21,161</b>	<b>587,824</b>	<b>601,791</b>	<b>-2.3</b>	<b>1,144,921</b>	<b>1,146,117</b>	<b>-0.1</b>
Railroad Cars Loaded	122,217	143,505	126,578	3,789,084	3,846,020	-1.5	7,398,421	7,290,021	1.5

Source: Energy Information Administration



**Volume 75 No. 27**

**OUTPUT FOR WEEK ENDED - Jul 07, 2007**

**Jul 11, 2007**

The net available amount of electric energy distributed by the Total Electric Utility Industry+ for the week ended Saturday, Jul 07, 2007 was **81,057** gigawatthours (GWh), according to the Edison Electric Institute. This is equivalent to **177** on the weekly electric output index.

**WEEKLY ELECTRIC OUTPUT BY GEOGRAPHIC DIVISION**  
(48 CONTIGUOUS STATES)

	Week Ended July 07		52 Weeks Ended July 07	
	GWh Output	% Increase Over Corresponding Week of 2006	GWh Output	% Increase Over Corresponding Period of 2006
New England	2,460	-10.7	132,977	-1.1
Mid-Atlantic	8,604	-9.1	452,311	0.2
Central Industrial	13,115	-1.1	711,501	1.1
West Central	7,376	3.3	348,078	0.5
Southeast	21,594	-0.9	1,087,771	0.8
South Central	12,376	-4.8	597,560	0.4
Rocky Mountain	6,624	17.3	266,415	3.4
Pacific Northwest	2,665	5.3	155,468	3.2
Pacific Southwest	6,243	2.7	293,504	0.2
Total United States	81,057	-0.8	4,045,585	0.9

**WEEKLY ELECTRIC OUTPUT IN PREVIOUS WEEKS--GWh**

Week Ended	2007	Week Ended	2006	% Inc. (07/06)	52 Weeks Ended	2007	% Inc. (07/06)
Jun 16	81,410	Jun 17	79,886	1.9	Jun 16	4,045,729	0.9
Jun 23	84,607	Jun 24	86,345	-2.0	Jun 23	4,043,992	0.7
Jun 30	85,316	Jul 01	83,095	2.7	Jun 30	4,046,213	0.9
Jul 07	81,057	Jul 08	81,685	-0.8	Jul 07	4,045,585	0.9
Jul 07	2,054,727	Jul 08	1,998,009	2.8	YEAR TO DATE, FIRST 27 WEEKS		

**WEEKLY ELECTRIC OUTPUT INDEX--TOTAL U.S.\***  
SEASONALLY ADJUSTED 1982 = 100

Week Ended	2007	Week Ended	2006	Week Ended	2005
Jun 16	181	Jun 17	181	Jun 18	184
Jun 23	188	Jun 24	193	Jun 25	175
Jun 30	183	Jul 01	181	Jul 02	190
Jul 07	177	Jul 08	181	Jul 09	171

\* Excludes Alaska and Hawaii

+ Includes investor-owned companies, cooperatives and government-owned utilities.

Copyright © 2007 Edison Electric Institute. All rights reserved.

## WEEKLY ELECTRIC OUTPUT BY GEOGRAPHIC DIVISION (48 CONTIGUOUS STATES)

	Week Ended			NMA CUMULATIVE JANUARY 1 to			52 Weeks Ended		
	7-Jul 2007 GWh Output	8-Jul 2006 GWh Output	% Increase Over Corresponding Week of 2006	7-Jul 2007 GWh Output	8-Jul 2006 GWh Output	% Increase Over Corresponding Week of 2006	7-Jul 2007 GWh Output	8-Jul 2006 GWh Output	% Increase Over Corresponding Week of 2006
<b>New England</b>	2,460	2,755	-10.7%	<b>68,464</b>	<b>67,311</b>	<b>1.7%</b>	132,977	134,519	-1.1%
<b>Mid-Atlantic</b>	8,604	9,468	-9.1%	<b>231,200</b>	<b>222,638</b>	<b>3.8%</b>	452,311	451,433	0.2%
<b>Central Industrial</b>	13,115	13,261	-1.1%	<b>366,189</b>	<b>349,575</b>	<b>4.8%</b>	711,501	703,900	1.1%
<b>West Central</b>	7,376	7,142	3.3%	<b>177,883</b>	<b>173,953</b>	<b>2.3%</b>	348,078	346,200	0.5%
<b>Southeast</b>	21,594	21,798	-0.9%	<b>552,515</b>	<b>536,834</b>	<b>2.9%</b>	1,087,771	1,078,775	0.8%
<b>South Central</b>	12,376	13,002	-4.8%	<b>296,922</b>	<b>297,734</b>	<b>-0.3%</b>	597,560	595,330	0.4%
<b>Rocky Mountain</b>	6,624	5,648	17.3%	<b>132,424</b>	<b>126,633</b>	<b>4.6%</b>	266,415	257,732	3.4%
<b>Pacific Northwest</b>	2,665	2,530	5.3%	<b>82,385</b>	<b>78,291</b>	<b>5.2%</b>	155,468	150,700	3.2%
<b>Pacific Southwest</b>	<u>6,243</u>	<u>6,081</u>	2.7%	<u><b>146,744</b></u>	<u><b>145,043</b></u>	<b>1.2%</b>	<u>293,504</u>	<u>292,803</u>	0.2%
<b>Total United States *</b>	81,057	81,685	-0.8%	<b>2,054,726</b>	<b>1,998,012</b>	<b>2.8%</b>	4,045,585	4,011,392	0.9%

**Notes:** EEI output data are an estimate of electricity load made available for distribution derived as weekly net generation + purchases from non-utilities + net imports - exports - sales for resale. It is not meant to be a measure of electricity generation for the U.S. EEI survey data represent the majority of national distribution (large utilities, large government power projects, some independent and large municipal power projects). The remaining segment of the industry (smaller producers) is estimated. Non-utility generation is captured via direct sales to utilities.

\* Excludes Alaska and Hawaii

\*\* Less than one-tenth of one percent

SOURCE: Edison Electric Institute (EEI), *Weekly Electric Output Report*.

AMERICAN IRON AND STEEL INSTITUTE  
 1140 Connecticut Avenue, Suite 705  
 Washington, D.C. 20036

July 9, 2007

**ESTIMATED WEEKLY RAW STEEL\* PRODUCTION**

<u>Period</u>	<u>Thousand Net Tons</u>	<u>Percent Change from Previous Period</u>	<u>Percent Capability Utilization**</u>	<u>Production by District</u>		
				<u>Week Ending</u>		
				<u>Jul 7</u>	<u>Jun 30</u>	
<b><u>Week Ending</u></b>						
July 7, 2007	2,102	1.6	88.8	North East Coast	144	143
July 7, 2006	2,087	0.7	88.7	Pgh/Youngstown	204	208
June 30, 2007	2,067	-1.6	86.4	Lake Erie	106	111
				Detroit	127	128
				Indiana/Chicago	528	531
				Midwest	241	241
				Southern	663	613
				Western	<u>89</u>	<u>92</u>
				<b>Total</b>	<b>2102</b>	<b>2067</b>
<b><u>Year-to-Date+</u></b>						
July 7, 2007	54,313	-6.6	83.9 +			
July 7, 2006	58,198	-	90.2			

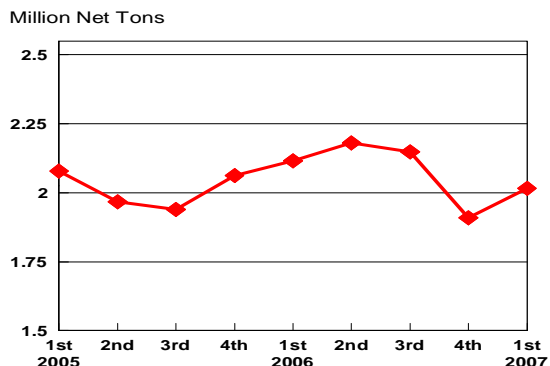
\*Raw steel production tonnage included in this report is estimated based on a sampling of steel producers. Therefore, this report should be used primarily to assess production trends. The AISI production report "AIS 7," produced monthly and available by subscription, provides a more accurate summary of steel production based on data supplied by companies representing approximately 75% of U.S. production capacity.

+Includes revisions for previous months

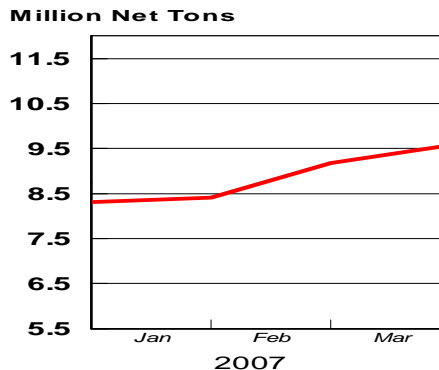
NOTE: Capability for the First Quarter 2007 is approximately 31.2 million net tons vs 30.5 million net tons for the same period last year, and 30.7 million tons for the fourth quarter of 2006.

Capability -	2003 approx.	2004	2005	2006	2007
	2.3 million tons/week	2.2	2.3	2.4	2.4

**Average Weekly Raw Steel Production**

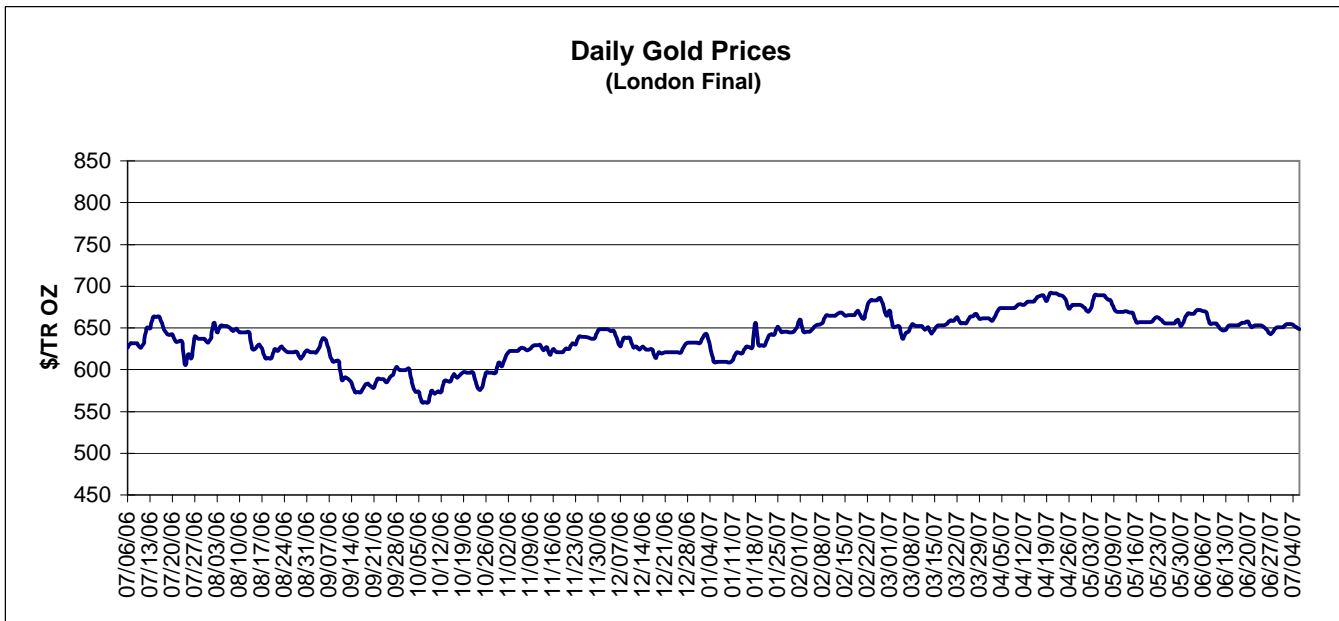
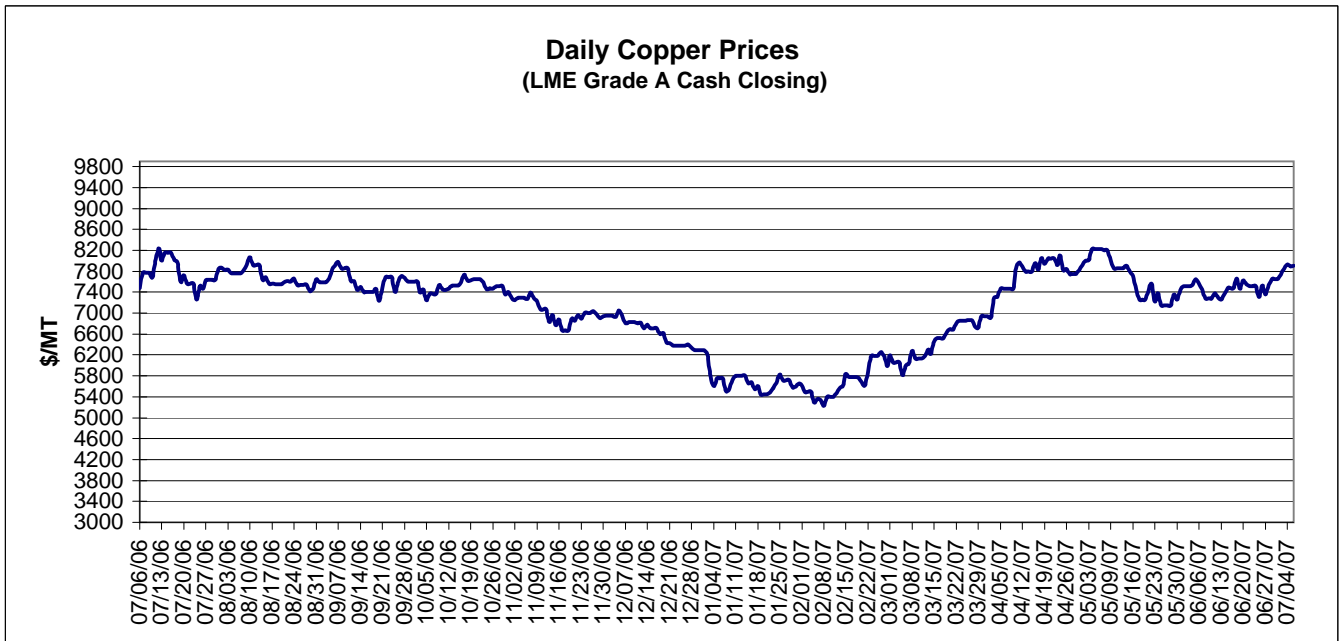


**MONTHLY RAW STEEL PRODUCTION**



\*Steel in the first solid state after melting suitable for further processing or sale, including ingots, steel for castings and strand or pressure cast blooms, slabs, or other product forms.

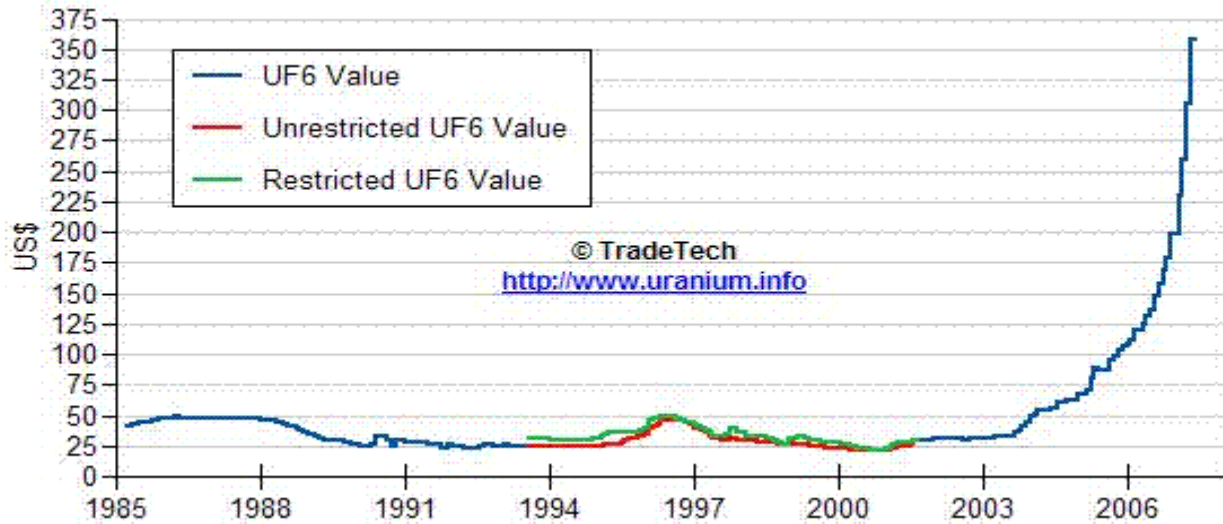
\*\* Based on tonnage capability to produce raw steel for a sustained full order book.



Data reflect closings on weekends and holidays.

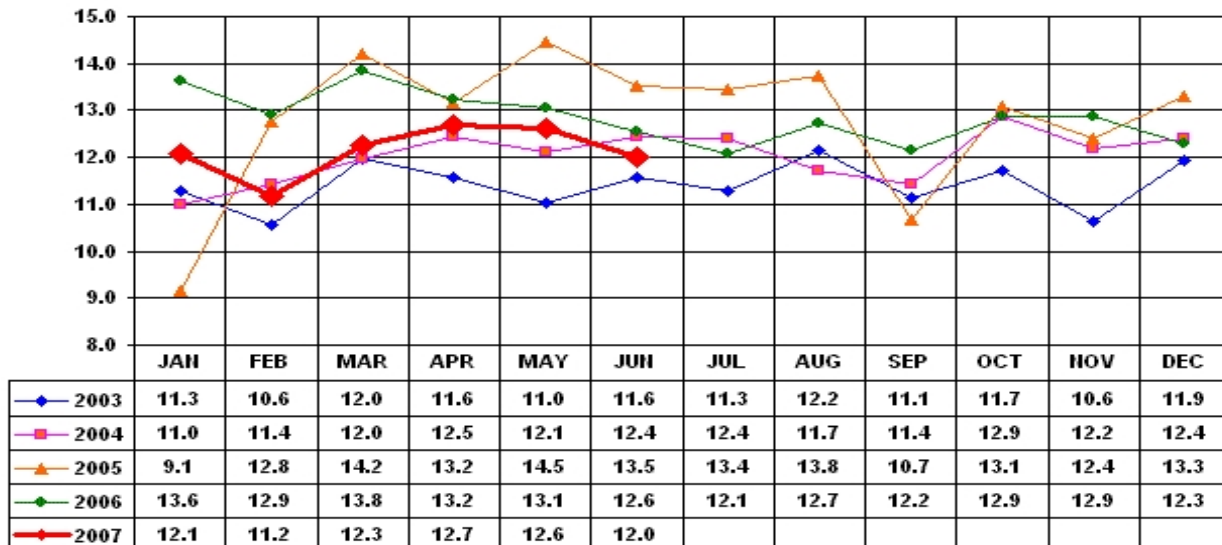
Source: Platts Metals Week

### Trade Tech's Uranium (UF6) Monthly Spot Prices (US\$/kg as UF6)



Source: Trade Tech, Uranium Info Website – <http://www.uranium.info>

### Coal and Coke Monthly Tonnage Indicator for Internal U.S. Waterways



Source: U.S. Army Corps of engineers, Waterborne Commerce Statistics Center