
National Mining Association

Weekly Statistical Summary

July 20, 2007 Edition
(Data for Week Ending July 14, 2007)

Prepared by
National Mining Association



Suite 500 East, 101 Constitution Avenue, NW
Washington, DC, 20001
Phone (202) 463-2600
Visit us at <http://www.nma.org>

NMA Weekly Statistical Summary

Vol. 45, No. 28
Dated 07/20/07

PRODUCTION, CONSUMPTION & TRADE						
	Week Ended			Cumulative Jan 1 to		
	07/14/07	07/15/06	% Chng	07/14/07	07/15/06	% Chng
EIA Coal Production (000 Tons):						
Week Ended/Year to Date	21,016	22,192	-5.3%	608,840	624,838	-2.6%
52 Weeks Ended	1,143,745	1,146,832	-0.3%			
Month Ended -- June						
	94,813	97,141	-2.4%	568,189	581,498	-2.3%
MONTH ENDED AND CUMULATIVE NUMBERS ARE PRELIMINARY AND SUBJECT TO CHANGE						
DOC Bituminous Coal Trade (000 Tons)						
Exports:	May 07/06			Jan - May 07/06		
			% Chng			% Chng
Metallurgical	2,626	2,613	0.5%	11,749	11,225	4.7%
Steam	2,086	2,158	-3.3%	8,798	7,489	17.5%
Imports:	2,691	2,742	-1.9%	14,164	14,729	-3.8%
EI Electric Output (Mil. Kwh)						
	88,617	89,508	-1.0%	2,143,344	2,087,517	2.7%
AISI Raw Steel Output (000 Tons)						
	2,124	2,087	1.8%	56,437	60,285	-6.4%
EIA U.S. PETROLEUM DATA						
4-Week Averages 000 Barrels per Day						
PETROLEUM SUPPLY:						
	Week Ending			Cumulative Daily Averages		
	07/13/07	07/13/06	% Chng	2007	2006	% Chng
Domestic Crude	5,157	5,199	-0.8	5,176	5,088	1.7
Net Imports (Incl. SPR)	10,397	10,430	-0.3	10,116	10,004	1.1
SPR Stocks W/D or Added	0	14	--	-9	-17	--
Other Stocks W/D or added	-100	156	--	-212	-55	--
Natural Gas Liquids Prod.	2,405	2,191	9.8	2,340	2,159	8.4



NMA

THE AMERICAN RESOURCE

National Mining Association Web Site: [http:// www.nma.org](http://www.nma.org)

EIA estimated Weekly U.S. Coal Production Overview (Thousand Short Tons)

Coal-Producing Region and State	Week Ended			Year to Date			52 Weeks Ended		
	7/14/2007	7/7/2007	7/15/2006	7/14/2007	7/14/2006	Percent Change	7/14/2007	7/15/2006	Percent Change
Alabama	378	319	342	10,882	10,701	1.7	19,201	19,844	-3.2
Alaska	26	22	24	844	767	10.0	1,502	1,264	18.8
Arizona	145	123	161	4,240	4,339	-2.3	8,117	9,624	-15.7
Arkansas	1	1	s	27	9	201.3	41	10	292.4
Colorado	722	610	714	18,895	18,648	1.3	36,494	36,010	1.3
Illinois	609	515	640	18,775	17,180	9.3	33,760	31,154	8.4
Indiana	671	568	672	19,201	19,085	0.6	35,836	35,043	2.3
Kansas	9	7	9	236	177	32.8	484	259	86.8
Kentucky Total	2,185	1,848	2,236	62,612	66,855	-6.3	116,040	121,506	-4.5
Eastern	1,640	1,386	1,733	46,828	52,104	-10.1	87,759	94,461	-7.1
Western	545	461	503	15,784	14,751	7.0	28,281	27,045	4.6
Louisiana	105	75	95	1,495	2,090	-28.5	3,510	4,089	-14.2
Maryland	98	83	117	2,078	3,066	-32.2	4,065	5,347	-24.0
Mississippi	84	86	95	1,984	2,117	-6.3	3,654	3,780	-3.3
Missouri	6	5	3	145	278	-47.8	261	573	-54.5
Montana	761	643	814	21,563	21,720	-0.7	41,568	40,986	1.4
New Mexico	475	402	477	12,691	13,645	-7.0	24,949	27,451	-9.1
North Dakota	496	420	603	15,266	15,683	-2.7	29,994	30,087	-0.3
Ohio	451	381	426	12,438	12,341	0.8	22,804	23,808	-4.2
Oklahoma	38	32	36	991	1,143	-13.4	1,846	2,007	-8.0
Pennsylvania Total	1,156	978	1,169	34,983	36,829	-5.0	64,222	68,020	-5.6
Anthracite	26	22	30	796	813	-2.0	1,498	1,612	-7.1
Bituminous	1,130	956	1,139	34,186	36,017	-5.1	62,724	66,409	-5.5
Tennessee	53	45	53	1,518	1,546	-1.8	2,776	3,008	-7.7
Texas	867	733	939	23,000	23,743	-3.1	44,683	45,919	-2.7
Utah	439	371	442	12,746	14,255	-10.6	24,498	25,557	-4.1
Virginia	543	459	560	15,470	16,401	-5.7	28,916	28,984	-0.2
Washington	0	0	52	0	1,581	-100.0	999	3,926	-74.6
West Virginia Total	2,792	2,360	2,792	82,516	84,279	-2.1	150,018	154,050	-2.6
Northern	865	731	747	25,090	24,375	2.9	43,387	44,016	-1.4
Southern	1,927	1,630	2,045	57,425	59,904	-4.1	106,631	110,035	-3.1
Wyoming	7,905	8,550	8,720	234,246	236,360	-0.9	443,510	424,524	4.5
Appalachian Total	7,111	6,012	7,192	206,713	217,267	-4.9	379,761	397,523	-4.5
Interior Total	2,936	2,483	2,992	81,637	80,574	1.3	152,355	149,879	1.7
Western Total	10,969	11,141	12,007	320,490	326,998	-2.0	611,630	599,430	2.0
East of Miss. River	9,021	7,641	9,102	262,457	270,400	-2.9	481,291	494,545	-2.7
West of Miss. River	11,995	11,994	13,090	346,383	354,438	-2.3	662,454	652,287	1.6
Bituminous and Lignite	20,990	19,614	22,162	608,044	624,026	-2.6	1,142,248	1,145,221	-0.3
Anthracite	26	22	30	796	813	-2.0	1,498	1,612	-7.1
U.S. Total	21,016	19,635	22,192	608,840	624,838	-2.6	1,143,745	1,146,832	-0.3
Railroad Cars Loaded	134,361	122,217	141,744	3,923,445	3,987,764	-1.6	7,391,038	7,293,692	1.3

Source: Energy Information Administration



Volume 75 No. 28

OUTPUT FOR WEEK ENDED - Jul 14, 2007

Jul 18, 2007

The net available amount of electric energy distributed by the Total Electric Utility Industry+ for the week ended Saturday, **Jul 14, 2007** was **88,617** gigawatthours (GWh), according to the Edison Electric Institute. This is equivalent to **186** on the weekly electric output index.

WEEKLY ELECTRIC OUTPUT BY GEOGRAPHIC DIVISION
(48 CONTIGUOUS STATES)

	Week Ended July 14		52 Weeks Ended July 14	
	GWh Output	% Increase Over Corresponding Week of 2006	GWh Output	% Increase Over Corresponding Period of 2006
New England	2,906	-3.1	132,883	-1.2
Mid-Atlantic	10,465	0.6	452,373	0.2
Central Industrial	15,055	-0.6	711,411	1.2
West Central	7,833	-1.8	347,932	0.7
Southeast	23,179	1.1	1,088,016	0.8
South Central	13,718	-7.6	596,425	0.0
Rocky Mountain	6,527	8.0	266,896	3.5
Pacific Northwest	2,974	11.6	155,778	3.3
Pacific Southwest	5,960	-8.1	292,980	0.0
Total United States	88,617	-1.0	4,044,694	0.8

WEEKLY ELECTRIC OUTPUT IN PREVIOUS WEEKS--GWh

Week Ended	2007	Week Ended	2006	% Inc. (07/06)	52 Weeks Ended	2007	% Inc. (07/06)
Jun 23	84,607	Jun 24	86,345	-2.0	Jun 23	4,043,992	0.7
Jun 30	85,316	Jul 01	83,095	2.7	Jun 30	4,046,213	0.9
Jul 07	81,057	Jul 08	81,685	-0.8	Jul 07	4,045,585	0.9
Jul 14	88,617	Jul 15	89,508	-1.0	Jul 14	4,044,694	0.8
Jul 14	2,143,344	Jul 15	2,087,517	2.7	YEAR TO DATE, FIRST 28 WEEKS		

WEEKLY ELECTRIC OUTPUT INDEX--TOTAL U.S.*
SEASONALLY ADJUSTED 1982 = 100

Week Ended	2007	Week Ended	2006	Week Ended	2005
Jun 23	188	Jun 24	193	Jun 25	175
Jun 30	183	Jul 01	181	Jul 02	190
Jul 07	177	Jul 08	181	Jul 09	171
Jul 14	186	Jul 15	189	Jul 16	178

* Excludes Alaska and Hawaii

+ Includes investor-owned companies, cooperatives and government-owned utilities.

Copyright © 2007 Edison Electric Institute. All rights reserved.

WEEKLY ELECTRIC OUTPUT BY GEOGRAPHIC DIVISION (48 CONTIGUOUS STATES)

	Week Ended			NMA CUMULATIVE JANUARY 1 to			52 Weeks Ended		
	14-Jul 2007 GWh Output	15-Jul 2006 GWh Output	% Increase Over Corresponding Week of 2006	14-Jul 2007 GWh Output	15-Jul 2006 GWh Output	% Increase Over Corresponding Week of 2006	14-Jul 2007 GWh Output	15-Jul 2006 GWh Output	% Increase Over Corresponding Week of 2006
New England	2,906	3,000	-3.1%	71,370	70,311	1.5%	132,883	134,544	-1.2%
Mid-Atlantic	10,465	10,403	0.6%	241,665	233,041	3.7%	452,373	451,290	0.2%
Central Industrial	15,055	15,145	-0.6%	381,244	364,720	4.5%	711,411	703,258	1.2%
West Central	7,833	7,979	-1.8%	185,716	181,932	2.1%	347,932	345,589	0.7%
Southeast	23,179	22,934	1.1%	575,694	559,768	2.8%	1,088,016	1,078,932	0.8%
South Central	13,718	14,852	-7.6%	310,640	312,586	-0.6%	596,425	596,152	0.0%
Rocky Mountain	6,527	6,046	8.0%	138,951	132,679	4.7%	266,896	257,796	3.5%
Pacific Northwest	2,974	2,665	11.6%	85,359	80,956	5.4%	155,778	150,783	3.3%
Pacific Southwest	<u>5,960</u>	<u>6,484</u>	-8.1%	<u>152,704</u>	<u>151,527</u>	0.8%	<u>292,980</u>	<u>292,837</u>	0.0%
Total United States *	88,617	89,508	-1.0%	2,143,343	2,087,520	2.7%	4,044,694	4,011,181	0.8%

Notes: EEI output data are an estimate of electricity load made available for distribution derived as weekly net generation + purchases from non-utilities + net imports - exports - sales for resale. It is not meant to be a measure of electricity generation for the U.S. EEI survey data represent the majority of national distribution (large utilities, large government power projects, some independent and large municipal power projects). The remaining segment of the industry (smaller producers) is estimated. Non-utility generation is captured via direct sales to utilities.

* Excludes Alaska and Hawaii

** Less than one-tenth of one percent

SOURCE: Edison Electric Institute (EEI), *Weekly Electric Output Report*.

AMERICAN IRON AND STEEL INSTITUTE
 1140 Connecticut Avenue, Suite 705
 Washington, D.C. 20036

July 16, 2007

ESTIMATED WEEKLY RAW STEEL* PRODUCTION

<u>Period</u>	<u>Thousand Net Tons</u>	<u>Percent Change from Previous Period</u>	<u>Percent Capability Utilization**</u>	<u>Production by District</u>	
				<u>Week Ending</u>	
				<u>Jul 14</u>	<u>Jul 7</u>
<u>Week Ending</u>					
July 14, 2007	2,124	1.0	89.8	North East Coast 138	144
July 14, 2006	2,087	1.7	88.7	Pgh/Youngstown 208	204
July 7, 2007	2,102	1.6	88.8	Lake Erie 106	106
				Detroit 115	127
				Indiana/Chicago 520	528
				Midwest 251	241
				Southern 694	663
				Western 92	89
				Total 2124	2102
<u>Year-to-Date+</u>					
July 14, 2007	56,437	-6.3	84.1		
July 14, 2006	60,285	-	90.2		

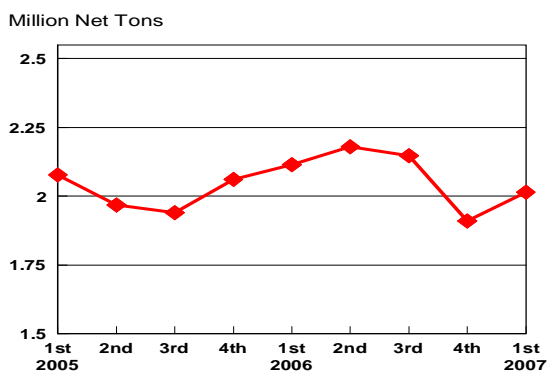
*Raw steel production tonnage included in this report is estimated based on a sampling of steel producers. Therefore, this report should be used primarily to assess production trends. The AISI production report "AIS 7," produced monthly and available by subscription, provides a more accurate summary of steel production based on data supplied by companies representing approximately 75% of U.S. production capacity.

+Includes revisions for previous months

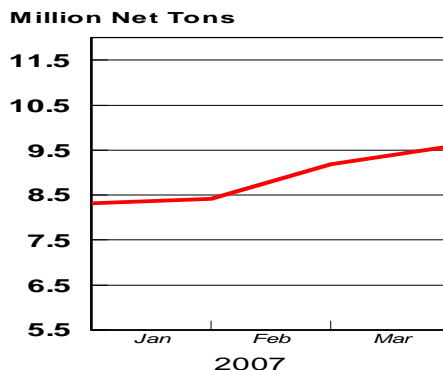
NOTE: Capability for the First Quarter 2007 is approximately 31.2 million net tons vs 30.5 million net tons for the same period last year, and 30.7 million tons for the fourth quarter of 2006.

Capability -	2003 approx.	2004	2005	2006	2007
	2.3 million tons/week	2.2	2.3	2.4	2.4

Average Weekly Raw Steel Production

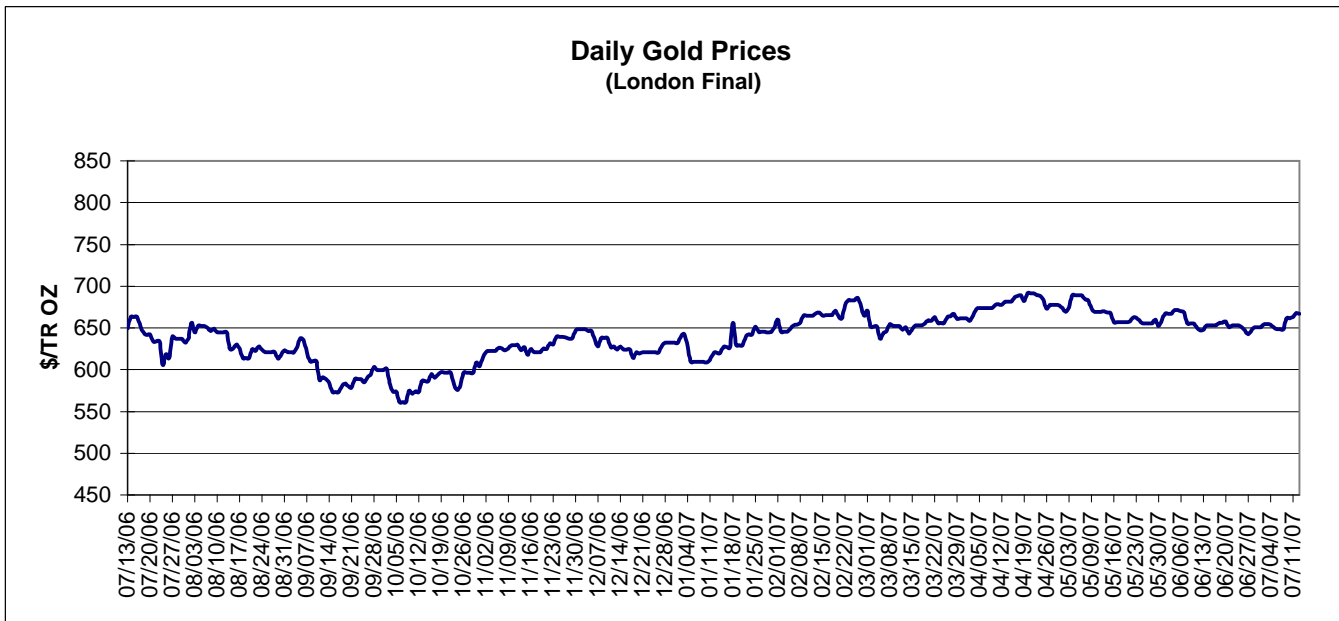
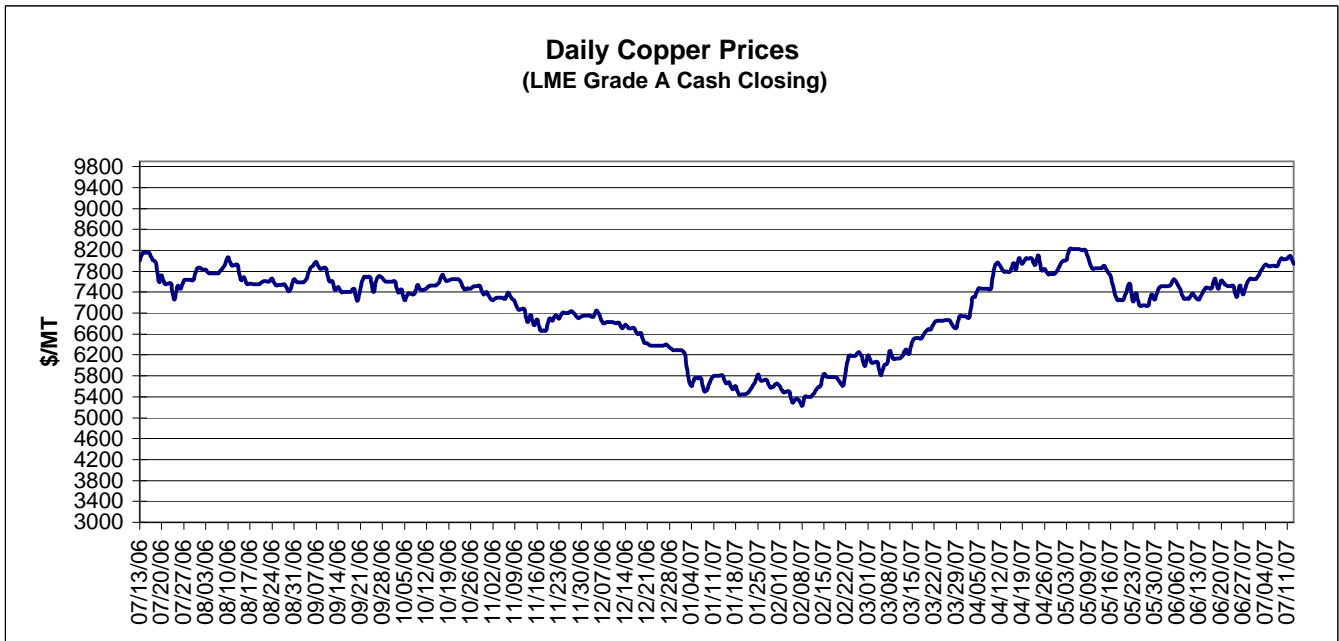


MONTHLY RAW STEEL PRODUCTION



*Steel in the first solid state after melting suitable for further processing or sale, including ingots, steel for castings and strand or pressure cast blooms, slabs, or other product forms.

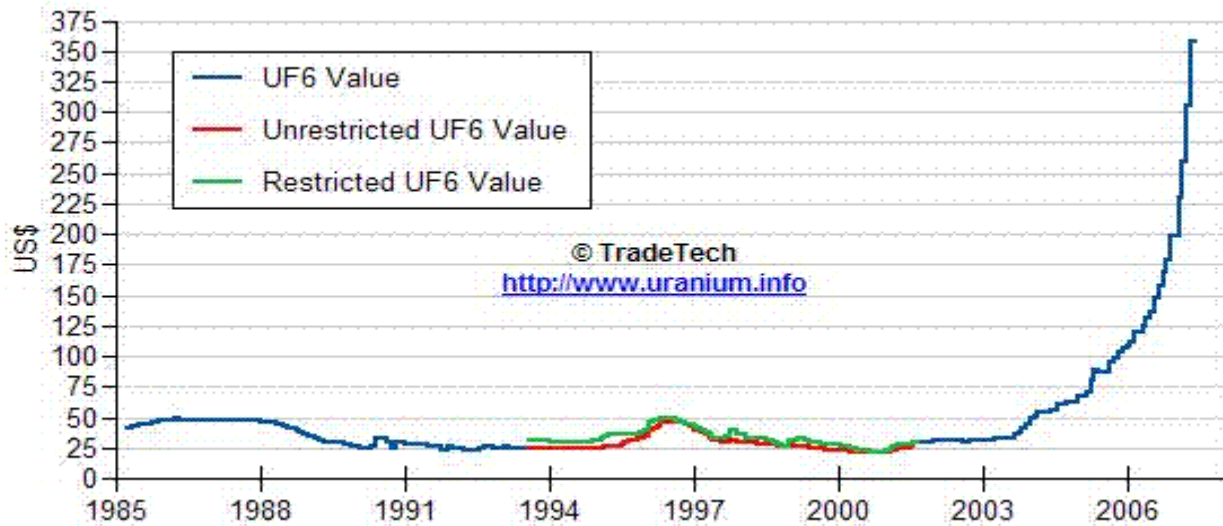
** Based on tonnage capability to produce raw steel for a sustained full order book.



Data reflect closings on weekends and holidays.

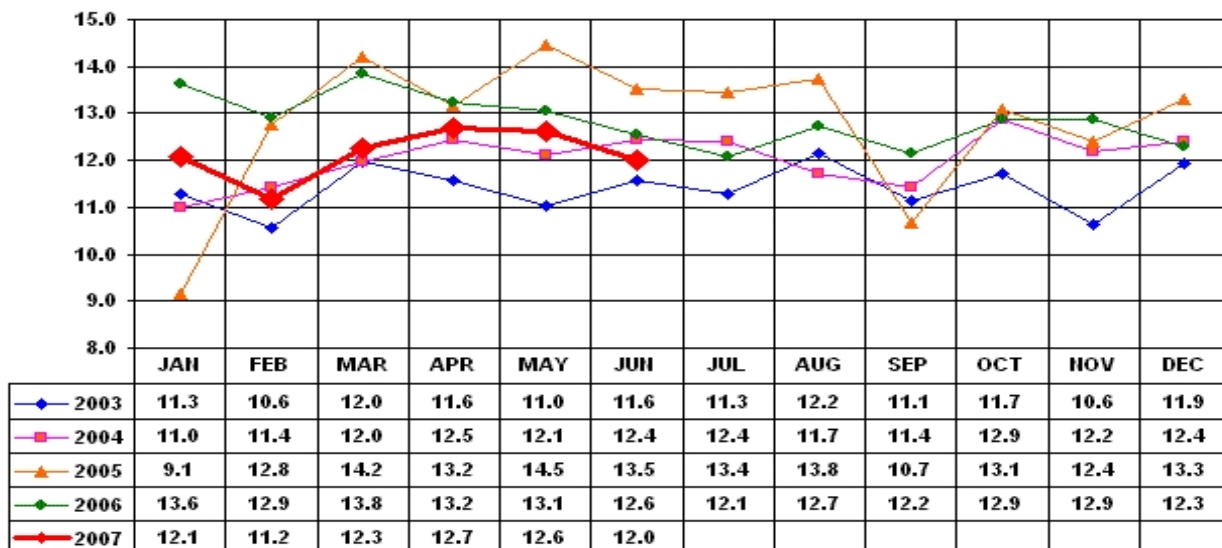
Source: Platts Metals Week

Trade Tech's Uranium (UF6) Monthly Spot Prices (US\$/kg as UF6)



Source: Trade Tech, Uranium Info Website – <http://www.uranium.info>

Coal and Coke Monthly Tonnage Indicator for Internal U.S. Waterways



Source: U.S. Army Corps of engineers, Waterborne Commerce Statistics Center