
National Mining Association

Weekly Statistical Summary

July 25, 2008 Edition
(Data for Week Ending July 19, 2008)

Prepared by
National Mining Association



Suite 500 East, 101 Constitution Avenue, NW
Washington, DC, 20001
Phone (202) 463-2600
Visit us at <http://www.nma.org>

NMA Weekly Statistical Summary

Vol. 46, No. 29
Dated 07/25/08

PRODUCTION, CONSUMPTION & TRADE						
	Week Ended			* Cumulative Jan 1 to		
	07/19/08	07/21/07	% Chng	07/19/08	07/19/07	% Chng
EIA Coal Production (000 Tons):						
Week Ended/Year to Date	22,460	21,174	6.1%	633,957	628,068	0.9%
52 Weeks Ended	1,147,315	1,147,324	0.0%			
* Due to leap year, 2008 cumulative reflects one extra day of tonnage.						
	June 08/07		% Chng	Jan - June 08/07		% Chng
Month Ended -- June	90,912	95,566	-4.9%	575,581	571,728	0.7%
MONTH ENDED AND CUMULATIVE NUMBERS ARE PRELIMINARY AND SUBJECT TO CHANGE						
DOC Bituminous Coal Trade (000 Tons)						
	May 08/07		% Chng	Jan - May 08/07		% Chng
Exports:						
Metallurgical	4,842	2,626	84.4%	18,243	11,749	55.3%
Steam	3,492	2,086	67.4%	13,713	8,798	55.9%
Imports:	2,702	2,691	0.4%	13,328	14,164	-5.9%
	Week Ended			* Cumulative Jan 1 to		
	07/19/08	07/21/07	% Chng	07/19/08	07/21/07	% Chng
EEl Electric Output (Mil. Kwh)	90,310	87,961	2.7%	2,244,583	2,231,305	0.6%
AISI Raw Steel Output (000 Tons)	2,114	2,059	2.7%	60,700	59,294	2.4%
EIA U.S. PETROLEUM DATA						
4-Week Averages						
000 Barrels per Day						
	Week Ending			Cumulative Daily Averages		
	07/18/08	07/18/07	% Chng	2008	2007	% Chng
PETROLEUM SUPPLY:						
Domestic Crude	5,097	5,128	-0.6	5,120	5,181	-1.2
Net Imports (Incl. SPR)	10,051	9,897	1.6	9,789	9,981	-1.9
SPR Stocks W/D or Added	-48	0	--	-47	-8	--
Other Stocks W/D or added	230	235	--	-18	-170	--
Natural Gas Liquids Prod.	2,196	2,423	-9.4	2,224	2,361	-5.8



NMA

THE AMERICAN RESOURCE National Mining Association Web Site: [http:// www.nma.org](http://www.nma.org)

EIA Estimated Weekly U.S. Coal Production Overview (Thousand Short Tons)

Coal-Producing Region and State	Week Ended			Year To Date			52 Weeks Ended		
	7/19/2008	7/12/2008	7/21/2007	7/19/2008	7/19/2007	Percent Change	7/19/2008	7/21/2007	Percent Change
Alabama	371	348	360	11,623	10,738	8.2	20,333	18,786	8.2
Alaska	27	25	13	805	830	-3.1	1,295	1,466	-11.7
Arizona	152	142	156	3,921	4,470	-12.3	7,403	8,215	-9.9
Arkansas	1	1	2	37	41	-9.9	78	55	42.1
Colorado	780	731	703	19,934	19,874	0.3	36,259	36,939	-1.8
Illinois	575	539	574	17,574	20,120	-12.7	30,181	35,128	-14.1
Indiana	675	632	687	19,579	19,195	2.0	35,237	35,057	0.5
Kansas	6	6	7	218	241	-9.8	395	482	-18.0
Kentucky Total	2,289	2,145	2,139	66,498	64,573	3.0	116,998	116,624	0.3
Eastern	1,728	1,619	1,607	49,558	48,958	1.2	87,526	88,897	-1.5
Western	561	526	532	16,940	15,614	8.5	29,472	27,727	6.3
Louisiana	100	90	80	2,171	1,381	57.2	3,896	3,330	17.0
Maryland	40	37	40	1,254	1,246	0.7	2,301	3,123	-26.3
Mississippi	66	107	63	2,006	2,003	0.1	3,532	3,624	-2.6
Missouri	4	4	4	126	128	-1.2	234	242	-3.3
Montana	808	757	865	24,735	22,202	11.4	45,688	41,623	9.8
New Mexico	478	448	397	12,119	13,990	-13.4	22,496	25,852	-13.0
North Dakota	543	509	585	15,595	16,065	-2.9	29,019	30,303	-4.2
Ohio	450	422	443	13,451	11,903	13.0	24,025	21,939	9.5
Oklahoma	35	33	31	963	921	4.5	1,684	1,746	-3.6
Pennsylvania Total	1,228	1,150	1,161	37,252	37,208	0.1	64,989	65,564	-0.9
Anthracite	23	22	28	914	870	5.1	1,607	1,550	3.7
Bituminous	1,204	1,128	1,133	36,338	36,339	*	63,382	64,014	-1.0
Tennessee	50	47	47	1,435	1,463	-1.9	2,618	2,676	-2.2
Texas	751	704	821	22,087	22,182	-0.4	41,626	43,148	-3.5
Utah	456	427	398	13,983	13,494	3.6	24,710	24,887	-0.7
Virginia	462	432	434	12,990	15,505	-16.2	22,851	28,489	-19.8
Washington	--	--	--	--	--	--	0	947	-100.0
West Virginia Total	3,023	2,833	2,859	87,718	86,106	1.9	154,506	151,903	1.7
Northern	784	735	766	24,128	24,313	-0.8	41,867	41,770	0.2
Southern	2,239	2,098	2,093	63,591	61,792	2.9	112,639	110,133	2.3
Wyoming	9,091	8,884	8,306	245,884	242,191	1.5	454,961	445,175	2.2
Appalachian Total	7,352	6,888	6,950	215,281	213,126	1.0	379,150	381,377	-0.6
Interior Total	2,773	2,640	2,802	81,701	81,826	-0.2	146,334	150,539	-2.8
Western Total	12,334	11,923	11,422	336,975	333,115	1.2	621,830	615,408	1.0
East of Miss. River	9,229	8,692	8,806	271,380	270,058	0.5	477,572	482,913	-1.1
West of Miss. River	13,231	12,759	12,368	362,577	358,009	1.3	669,742	664,411	0.8
Bituminous and Lignite	22,437	21,430	21,146	633,043	627,198	0.9	1,145,707	1,145,774	*
Anthracite	23	22	28	914	870	5.1	1,607	1,550	3.7
U.S. Total	22,460	21,451	21,174	633,957	628,068	0.9	1,147,315	1,147,324	*
Railroad Cars Loaded	148,208	138,770	137,472	4,181,397	4,060,917	3.0	7,524,512	7,386,354	1.9

Source: Energy Information Administration



WEEKLY ELECTRIC OUTPUT

Essential Energy Information from EEI's Statistics Department

Volume 76 No. 29

OUTPUT FOR WEEK ENDED - Jul 19, 2008

Jul 23, 2008

The net available amount of electric energy distributed by the Total Electric Utility Industry+ for the week ended Saturday, Jul 19, 2008 was 90,310 gigawatthours (GWh), according to the Edison Electric Institute. This is equivalent to 174 on the weekly electric output index.

WEEKLY ELECTRIC OUTPUT BY GEOGRAPHIC DIVISION

(48 CONTIGUOUS STATES)

	Week Ended July 19		52 Weeks Ended July 19	
	GWh Output	% Increase Over Corresponding Week of 2007	GWh Output	% Increase Over Corresponding Period of 2007
New England	3,077	8.8	133,493	0.8
Mid-Atlantic	10,764	6.4	456,741	1.2
Central Industrial	15,701	7.2	719,065	1.3
West Central	7,742	0.2	349,750	0.7
Southeast	23,151	-2.0	1,110,023	2.1
South Central	14,461	9.6	611,227	2.9
Rocky Mountain	6,351	-8.4	276,728	3.6
Pacific Northwest	2,915	2.8	166,928	7.0
Pacific Southwest	6,148	2.0	289,936	-0.6
Total United States	90,310	2.7	4,113,890	1.9

WEEKLY ELECTRIC OUTPUT IN PREVIOUS WEEKS--GWh

Week Ended	2008	Week Ended	2007	% Inc. (08/07)	52 Weeks Ended	2008	% Inc. (08/07)
Jun 28	84,580	Jun 30	85,316	-0.9	Jun 28	4,111,033	1.6
Jul 05	82,135	Jul 07	81,057	1.3	Jul 05	4,112,111	1.6
Jul 12	88,047	Jul 14	88,617	-0.6	Jul 12	4,111,541	1.7
Jul 19	90,310	Jul 21	87,961	2.7	Jul 19	4,113,890	1.9
Jul 19	2,244,583	Jul 21	2,231,305	0.6	YEAR TO DATE, FIRST 29 WEEKS		

WEEKLY ELECTRIC OUTPUT INDEX--TOTAL U.S.*

SEASONALLY ADJUSTED 1982 = 100

Week Ended	2008	Week Ended	2007	Week Ended	2006
Jun 28	180	Jun 30	183	Jul 01	181
Jul 05	177	Jul 07	177	Jul 08	181
Jul 12	181	Jul 14	186	Jul 15	189
Jul 19	174	Jul 21	174	Jul 22	197

* Excludes Alaska and Hawaii.

+ Includes investor-owned companies, cooperatives and government-owned utilities.

Copyright © 2008 Edison Electric Institute. All rights reserved.

WEEKLY ELECTRIC OUTPUT BY GEOGRAPHIC DIVISION (48 CONTIGUOUS STATES)

	Week Ended			NMA CUMULATIVE JANUARY WEEK ONE TO			52 Weeks Ended		
	19-Jul 2008 GWh Output	21-Jul 2007 GWh Output	% Increase Over Corresponding Week of 2007	19-Jul 2008 GWh Output	21-Jul 2007 GWh Output	% Increase Over Corresponding Week of 2007	19-Jul 2008 GWh Output	21-Jul 2007 GWh Output	% Increase Over Corresponding Week of 2007
New England	3,077	2,829	8.8%	73,246	74,199	-1.3%	133,493	132,461	0.8%
Mid-Atlantic	10,764	10,121	6.4%	249,858	251,786	-0.8%	456,741	451,135	1.2%
Central Industrial	15,701	14,653	7.2%	392,824	395,897	-0.8%	719,065	709,667	1.3%
West Central	7,742	7,727	0.2%	190,979	193,443	-1.3%	349,750	347,171	0.7%
Southeast	23,151	23,631	-2.0%	602,688	599,325	0.6%	1,110,023	1,086,727	2.1%
South Central	14,461	13,200	9.6%	336,931	323,840	4.0%	611,227	594,153	2.9%
Rocky Mountain	6,351	6,934	-8.4%	145,185	145,885	-0.5%	276,728	267,194	3.6%
Pacific Northwest	2,915	2,836	2.8%	96,043	88,195	8.9%	166,928	156,008	7.0%
Pacific Southwest	6,148	6,030	2.0%	156,830	158,734	-1.2%	289,936	291,826	-0.6%
Total United States *	90,310	87,961	2.7%	2,244,584	2,231,304	0.6%	4,113,891	4,036,342	1.9%

Notes: EEI output data are an estimate of electricity load made available for distribution derived as weekly net generation + purchases from non-utilities + net imports - exports - sales for resale. It is not meant to be a measure of electricity generation for the U.S. EEI survey data represent the majority of national distribution (large utilities, large government power projects, some independent and large municipal power projects). The remaining segment of the industry (smaller producers) is estimated. Non-utility generation is captured via direct sales to utilities.

* Excludes Alaska and Hawaii

** Less than one-tenth of one percent

SOURCE: Edison Electric Institute (EEI), *Weekly Electric Output Report*.

AMERICAN IRON AND STEEL INSTITUTE
 1140 Connecticut Avenue, Suite 705
 Washington, D.C. 20036

July 21, 2008

ESTIMATED WEEKLY RAW STEEL * PRODUCTION

Period	Thousand Net Tons	Percent Change from Previous Period	Percent Capability Utilization**	Production by District		
				Week Ending July 19	Week Ending July 12	
Week Ending				North East Coast	175	183
				Pgh/Youngstown	216	218
				Lake Erie	92	90
				Detroit	100	99
				Indiana/Chicago	507	478
				Midwest	271	259
				Southern	661	657
				Western	92	97
				Total	2,114	2,081
Year-to-Date+						
July 19, 2008	60,700	2.4	88.6			
July 19, 2007	59,294	-	85.9			

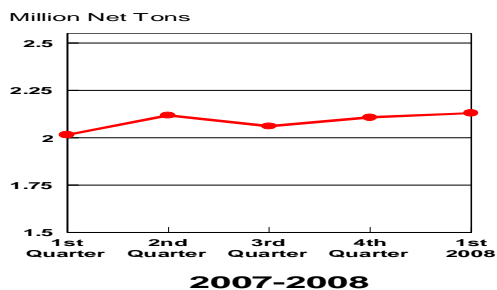
*Raw steel production tonnage included in this report is estimated based on a sampling of steel producers. Therefore, this report should be used primarily to assess production trends. The AISI production report "AIS 7," produced monthly and available by subscription, provides a more accurate summary of steel production based on data supplied by companies representing approximately 75% of U.S. production capacity.

+ Includes revisions for previous months

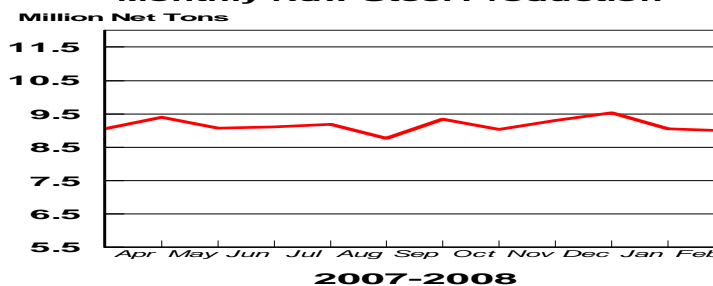
NOTE: Capacity for the Fourth Quarter 2007 is approximately 31.3 million net tons vs 30.7 million net tons for the same period last year, and 30.1 million tons for the third quarter of 2007.

Year	Capacity (million tons/week)
2003 approx.	2.3
2004	2.2
2005	2.3
2006	2.4
2007	2.4

Average Weekly Raw Steel Production

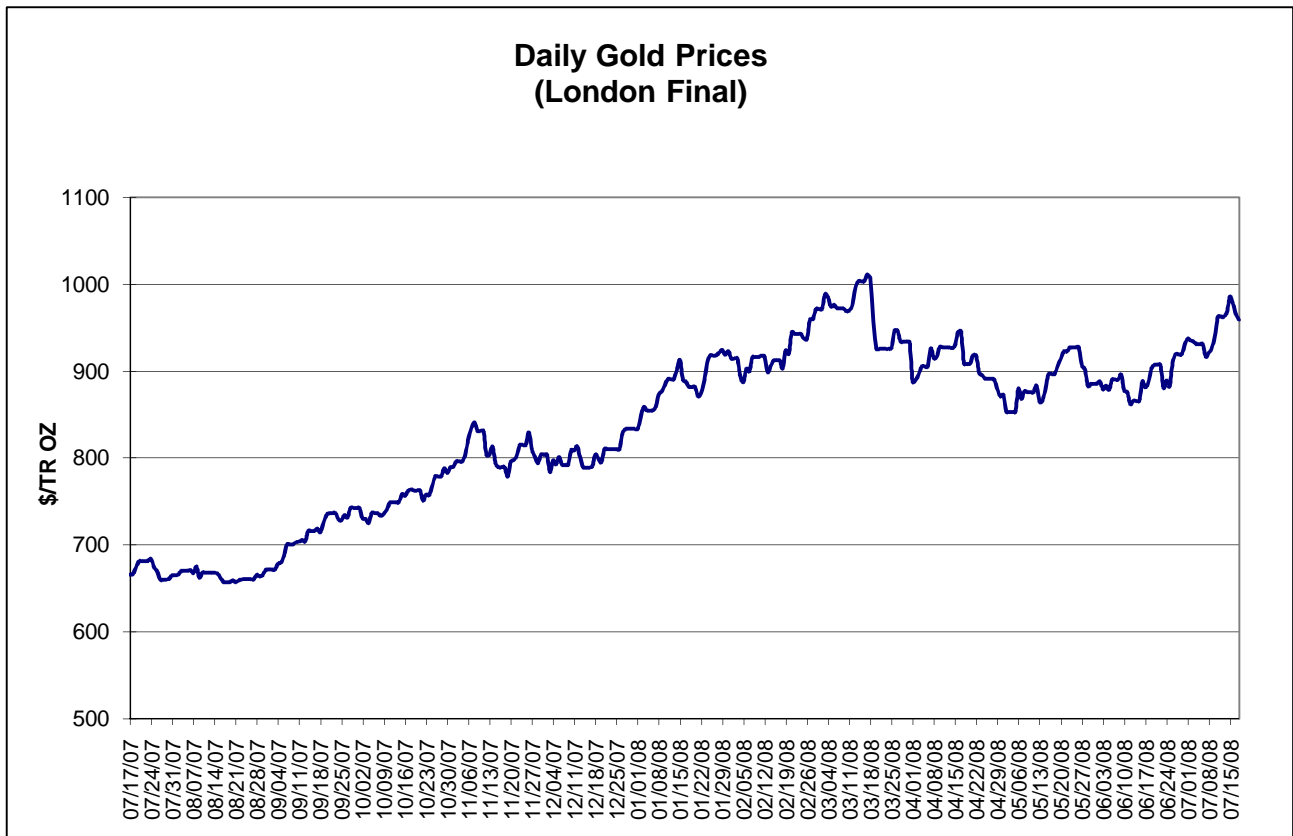
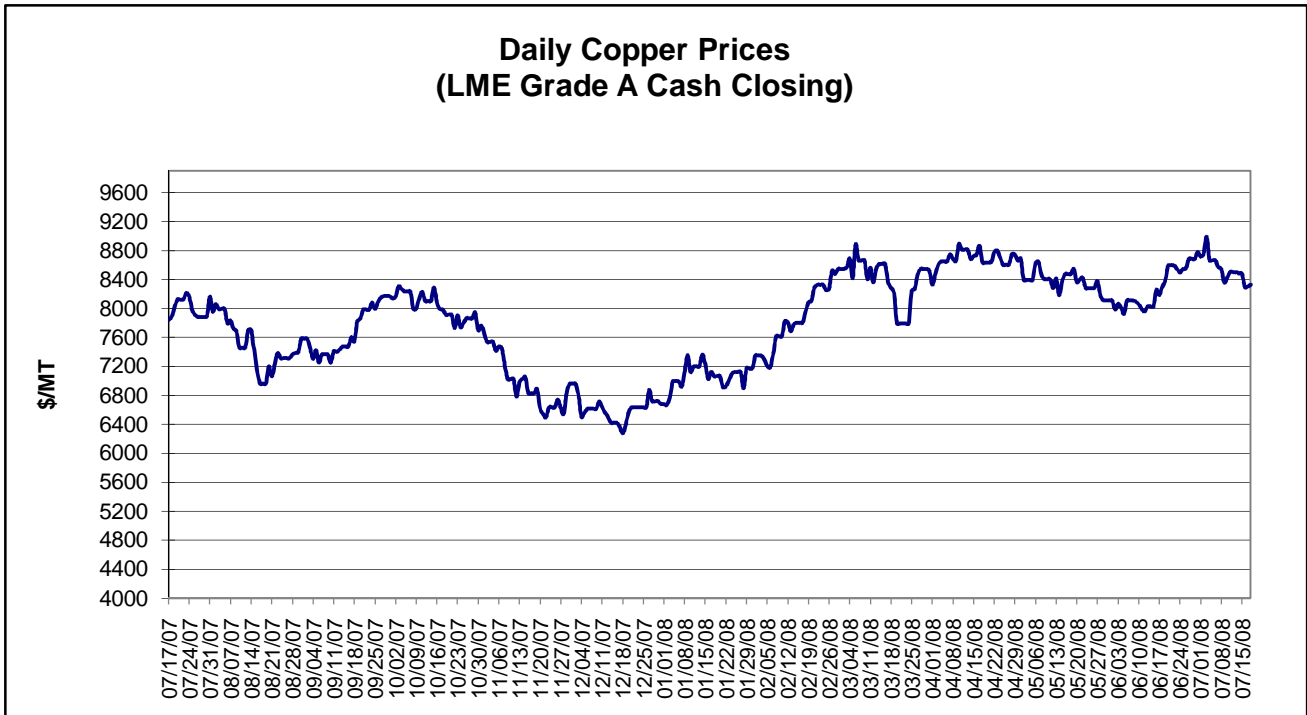


Monthly Raw Steel Production



*Steel in the first solid state after melting suitable for further processing or sale, including ingots, steel for castings and strand or pressure cast blooms, slabs, or other product forms.

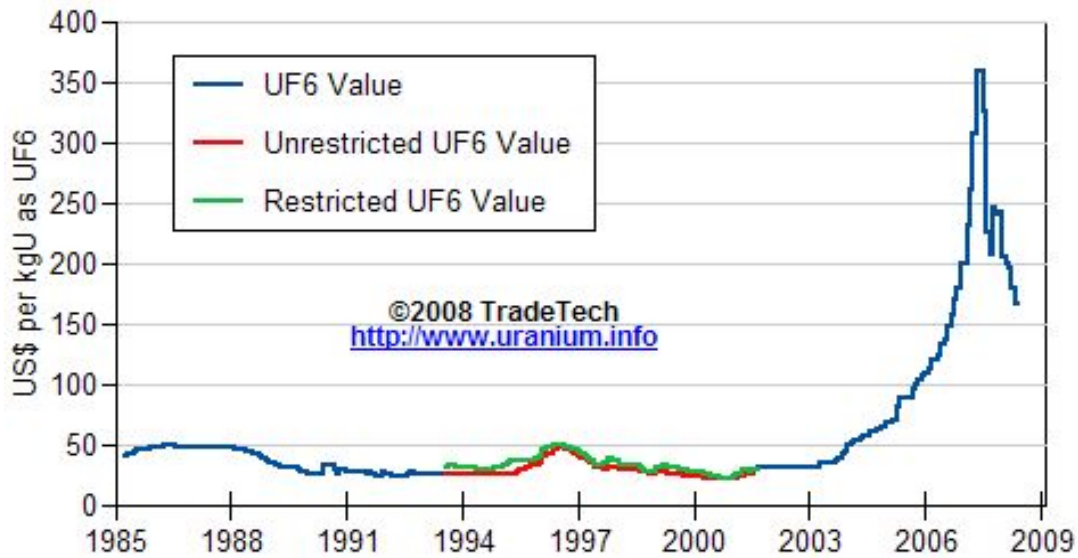
** Based on tonnage capability to produce raw steel for a sustained full order book.



Data reflect closings on weekends and holidays.

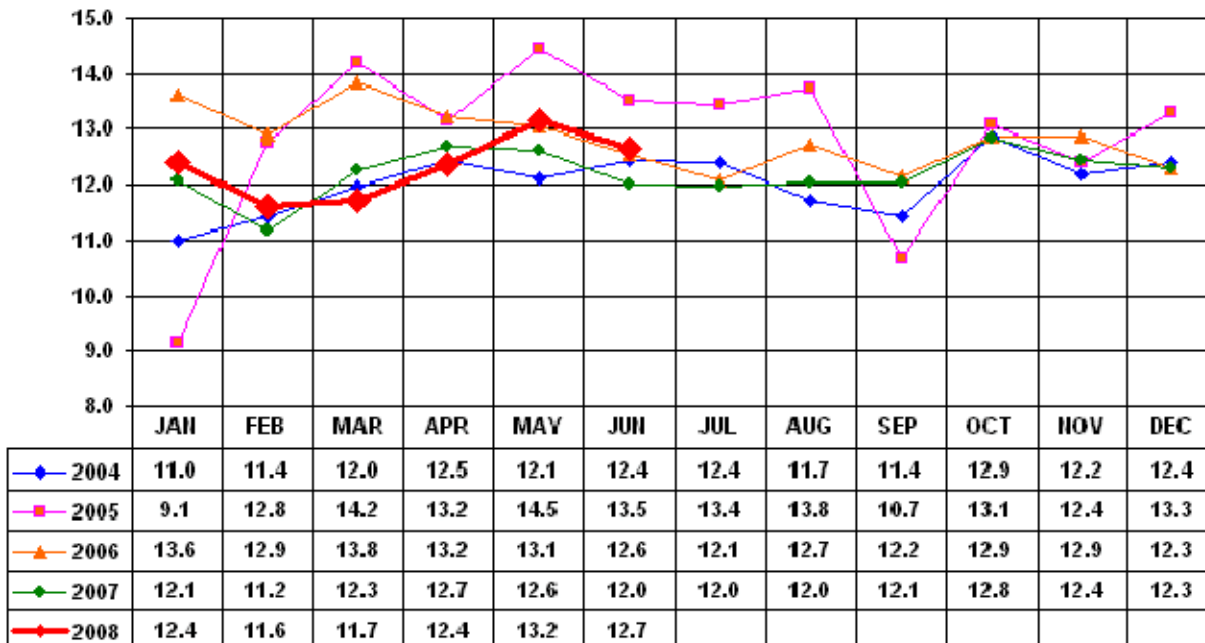
Source: Platts Metals Week

Trade Tech's Uranium (UF6) Monthly Spot Prices (US\$/kg as UF6)



Source: Trade Tech, Uranium Info Website – <http://www.uranium.info>

Coal and Coke Monthly Tonnage Indicator for Internal U.S. Waterways



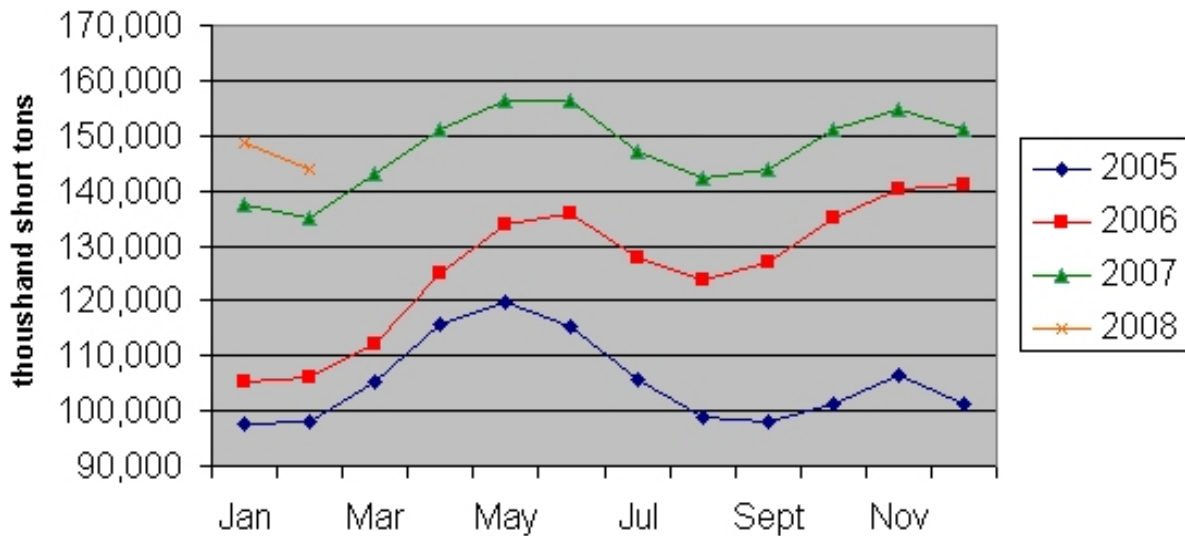
Source: U.S. Army Corps of Engineers, Waterborne Commerce Statistics Center

EIA Weekly Spot Coal Prices

Average Spot coal Prices (Dollars per Short Ton)					
Week Ended	Central Appalachia 12,500 Btu, 1.2 SO2	Northern Appalachia 13,000 Btu, <3.0 SO2	Illinois Basin 11,800 Btu, 5.0 SO2	Powder River Basin 8,800 Btu, 0.8 SO2	Uinta Basin 11,700 Btu, 0.8 SO2
20-June-08	\$117.60	\$118.00	\$65.00	\$13.25	\$54.00
27-June-08	\$117.60	\$118.00	\$65.00	\$12.75	\$54.00
03-July-08	\$117.60	\$130.00	\$70.00	\$14.00	\$54.00
11-July-08	\$134.55	\$138.00	\$70.00	\$14.00	\$56.00
18-July-08	\$139.30	\$138.00	\$70.00	\$14.00	\$56.00

Source: Energy Information Administration (from Platts *Coal Outlook*, "Weekly Price Survey")

EIA Electric Power Sector Coal Stocks



Source: Energy Information Administration

USGS Production of Selected Mineral Commodities	2008 First Quarter	2007 First Quarter	Percent Change
Aluminum, secondary (000 Mt.)	240.0	243.0	-1%
Cement (Mil. Mt.)	17.2	18.0	-4%
Gypsum (Mil. Mt.) *	4.7	5.4	-13%
Iron Ore (Mil. Mt.)	12.9	11.4	13%
Phosphate rock (Mil. Mt.)	7.6	7.1	7%
Sand & gravel, construction (Mil. Mt.)	184.0	194.0	-5%
Soda ash (Mil. Mt.)	2.8	2.7	4%
Stone, crushed (Mil. Mt.)	280.0	263.0	6%
Zinc (000 Mt.)	207.0	181.0	14%

Source: U.S. Geological Survey, Mineral Industry Surveys, *U.S. Production of Selected Mineral Commodities in the First Quarter 2008*

* Revised June 16, 2008. Note - data are preliminary.