
National Mining Association

Weekly Statistical Summary

July 27, 2007 Edition
(Data for Week Ending July 21, 2007)

Prepared by
National Mining Association



Suite 500 East, 101 Constitution Avenue, NW
Washington, DC, 20001
Phone (202) 463-2600
Visit us at <http://www.nma.org>

NMA Weekly Statistical Summary

Vol. 45, No. 29
Dated 07/27/07

PRODUCTION, CONSUMPTION & TRADE						
	Week Ended			Cumulative Jan 1 to		
	07/21/07	07/22/06	% Chng	07/21/07	07/22/06	% Chng
EIA Coal Production (000 Tons):						
Week Ended/Year to Date	21,351	22,095	-3.4%	630,191	646,952	-2.6%
52 Weeks Ended	1,143,001	1,147,506	-0.4%			
Month Ended -- June						
	June 07/06		% Chng	Jan - June 07/06		% Chng
	94,813	97,141	-2.4%	568,189	581,498	-2.3%
MONTH ENDED AND CUMULATIVE NUMBERS ARE PRELIMINARY AND SUBJECT TO CHANGE						
DOC Bituminous Coal Trade (000 Tons)						
Exports:	May 07/06			Jan - May 07/06		
			% Chng			% Chng
Metallurgical	2,626	2,613	0.5%	11,749	11,225	4.7%
Steam	2,086	2,158	-3.3%	8,798	7,489	17.5%
Imports:	2,691	2,742	-1.9%	14,164	14,729	-3.8%
EI Electric Output (Mil. Kwh)						
	Week Ended			Cumulative Jan 1 to		
	07/21/07	07/22/06	% Chng	07/21/07	07/22/06	% Chng
	87,961	96,314	-8.7%	2,231,305	2,183,831	2.2%
AISI Raw Steel Output (000 Tons)						
	2,118	2,087	1.5%	58,555	62,372	-6.1%
EIA U.S. PETROLEUM DATA						
4-Week Averages 000 Barrels per Day						
PETROLEUM SUPPLY:						
	Week Ending			Cumulative Daily Averages		
	07/20/07	07/20/06	% Chng	2007	2006	% Chng
Domestic Crude	5,176	5,187	-0.2	5,177	5,091	1.7
Net Imports (Incl. SPR)	10,366	10,303	0.6	10,124	10,009	1.1
SPR Stocks W/D or Added	0	8	--	-8	-17	--
Other Stocks W/D or added	-5	161	--	-199	-47	--
Natural Gas Liquids Prod.	2,396	2,302	4.1	2,342	2,169	8.0



NMA
THE AMERICAN RESOURCE

National Mining Association Web Site: [http:// www.nma.org](http://www.nma.org)

EIA Estimated Weekly U.S. Coal Production Overview (Thousand Short Tons)

Coal-Producing Region and State	Week Ended			Year to Date			52 Weeks Ended		
	7/21/2007	7/14/2007	7/22/2006	7/21/2007	7/21/2006	Percent Change	7/21/2007	7/22/2006	Percent Change
Alabama	384	378	345	11,266	11,045	2.0	19,240	19,801	-2.8
Alaska	26	26	24	870	791	9.9	1,503	1,272	18.2
Arizona	148	145	163	4,387	4,502	-2.5	8,102	9,562	-15.3
Arkansas	1	1	s	28	9	194.3	41	11	280.7
Colorado	733	722	718	19,628	19,365	1.4	36,508	35,964	1.5
Illinois	618	609	644	19,393	17,824	8.8	33,734	31,207	8.1
Indiana	681	671	676	19,883	19,761	0.6	35,841	35,069	2.2
Kansas	9	9	9	244	187	30.8	484	264	82.9
Kentucky Total	2,218	2,185	2,249	64,831	69,104	-6.2	116,009	121,514	-4.5
Eastern	1,665	1,640	1,744	48,493	53,848	-9.9	87,680	94,463	-7.2
Western	554	545	506	16,338	15,256	7.1	28,329	27,051	4.7
Louisiana	86	105	86	1,582	2,177	-27.4	3,509	4,084	-14.1
Maryland	99	98	118	2,178	3,184	-31.6	4,046	5,371	-24.7
Mississippi	63	84	66	2,047	2,186	-6.4	3,652	3,811	-4.2
Missouri	6	6	4	151	281	-46.4	263	565	-53.4
Montana	772	761	819	22,336	22,538	-0.9	41,522	40,967	1.4
New Mexico	482	475	480	13,173	14,126	-6.7	24,951	27,338	-8.7
North Dakota	504	496	607	15,770	16,290	-3.2	29,891	30,099	-0.7
Ohio	458	451	428	12,896	12,769	1.0	22,834	23,762	-3.9
Oklahoma	39	38	36	1,029	1,179	-12.7	1,848	2,009	-8.0
Pennsylvania Total	1,174	1,156	1,176	36,157	38,005	-4.9	64,220	67,953	-5.5
Anthracite	26	26	30	823	843	-2.4	1,494	1,611	-7.3
Bituminous	1,148	1,130	1,146	35,334	37,162	-4.9	62,726	66,342	-5.5
Tennessee	54	53	54	1,572	1,600	-1.8	2,776	2,999	-7.4
Texas	880	867	945	23,880	24,687	-3.3	44,619	45,981	-3.0
Utah	446	439	445	13,192	14,700	-10.3	24,499	25,536	-4.1
Virginia	551	543	563	16,021	16,964	-5.6	28,904	29,006	-0.3
Washington	0	0	52	0	1,633	-100.0	947	3,866	-75.5
West Virginia Total	2,834	2,792	2,809	85,349	87,088	-2.0	150,043	153,959	-2.5
Northern	878	865	752	25,968	25,127	3.3	43,512	43,971	-1.0
Southern	1,956	1,927	2,057	59,382	61,961	-4.2	106,530	109,988	-3.1
Wyoming	8,086	7,905	8,579	242,332	244,958	-1.1	443,016	425,536	4.1
Appalachian Total	7,218	7,111	7,236	213,931	224,501	-4.7	379,743	397,314	-4.4
Interior Total	2,937	2,936	2,972	84,574	83,548	1.2	152,319	150,052	1.5
Western Total	11,196	10,969	11,888	331,687	338,902	-2.1	610,939	600,140	1.8
East of Miss. River	9,135	9,021	9,127	271,592	279,529	-2.8	481,298	494,453	-2.7
West of Miss. River	12,217	11,995	12,968	358,600	367,423	-2.4	661,703	653,053	1.3
Bituminous and Lignite	21,325	20,990	22,065	629,369	646,109	-2.6	1,141,507	1,145,894	-0.4
Anthracite	26	26	30	823	843	-2.4	1,494	1,611	-7.3
U.S. Total	21,351	21,016	22,095	630,191	646,952	-2.6	1,143,001	1,147,506	-0.4
Railroad Cars Loaded	137,472	134,361	142,156	4,060,917	4,129,920	-1.7	7,386,354	7,300,299	1.2

Source: Energy Information Administration



Volume 75 No. 29

OUTPUT FOR WEEK ENDED - Jul 21, 2007

Jul 25, 2007

The net available amount of electric energy distributed by the Total Electric Utility Industry+ for the week ended Saturday, Jul 21, 2007 was 87,961 gigawatthours (GWh), according to the Edison Electric Institute. This is equivalent to 174 on the weekly electric output index.

WEEKLY ELECTRIC OUTPUT BY GEOGRAPHIC DIVISION
(48 CONTIGUOUS STATES)

	Week Ended July 21		52 Weeks Ended July 21	
	GWh Output	% Increase Over Corresponding Week of 2006	GWh Output	% Increase Over Corresponding Period of 2006
New England	2,829	-13.0	132,461	-1.5
Mid-Atlantic	10,121	-10.9	451,135	0.0
Central Industrial	14,653	-10.6	709,667	1.0
West Central	7,727	-9.0	347,171	0.5
Southeast	23,631	-5.2	1,086,727	0.7
South Central	13,200	-14.7	594,153	-0.5
Rocky Mountain	6,934	4.5	267,194	3.5
Pacific Northwest	2,836	8.9	156,008	3.4
Pacific Southwest	6,030	-16.1	291,826	-0.4
Total United States	87,961	-8.7	4,036,342	0.6

WEEKLY ELECTRIC OUTPUT IN PREVIOUS WEEKS--GWh

Week Ended	2007	Week Ended	2006	% Inc. (07/06)	52 Weeks Ended	2007	% Inc. (07/06)
Jun 30	85,316	Jul 01	83,095	2.7	Jun 30	4,046,213	0.9
Jul 07	81,057	Jul 08	81,685	-0.8	Jul 07	4,045,585	0.9
Jul 14	88,617	Jul 15	89,508	-1.0	Jul 14	4,044,694	0.8
Jul 21	87,961	Jul 22	96,314	-8.7	Jul 21	4,036,342	0.6
Jul 21	2,231,305	Jul 22	2,183,831	2.2	YEAR TO DATE, FIRST 29 WEEKS		

WEEKLY ELECTRIC OUTPUT INDEX--TOTAL U.S.*
SEASONALLY ADJUSTED 1982 = 100

Week Ended	2007	Week Ended	2006	Week Ended	2005
Jun 30	183	Jul 01	181	Jul 02	190
Jul 07	177	Jul 08	181	Jul 09	171
Jul 14	186	Jul 15	189	Jul 16	178
Jul 21	174	Jul 22	197	Jul 23	187

* Excludes Alaska and Hawaii

+ Includes investor-owned companies, cooperatives and government-owned utilities.

Copyright © 2007 Edison Electric Institute. All rights reserved.

WEEKLY ELECTRIC OUTPUT BY GEOGRAPHIC DIVISION (48 CONTIGUOUS STATES)

	Week Ended			NMA CUMULATIVE JANUARY 1 to			52 Weeks Ended		
	21-Jul 2007 GWh Output	22-Jul 2006 GWh Output	% Increase Over Corresponding Week of 2006	21-Jul 2007 GWh Output	22-Jul 2006 GWh Output	% Increase Over Corresponding Week of 2006	21-Jul 2007 GWh Output	22-Jul 2006 GWh Output	% Increase Over Corresponding Week of 2006
New England	2,829	3,251	-13.0%	74,199	73,562	0.9%	132,461	134,528	-1.5%
Mid-Atlantic	10,121	11,359	-10.9%	251,786	244,400	3.0%	451,135	451,283	0.0%
Central Industrial	14,653	16,397	-10.6%	395,897	381,117	3.9%	709,667	702,895	1.0%
West Central	7,727	8,489	-9.0%	193,443	190,421	1.6%	347,171	345,514	0.5%
Southeast	23,631	24,920	-5.2%	599,325	584,688	2.5%	1,086,727	1,078,740	0.7%
South Central	13,200	15,473	-14.7%	323,840	328,059	-1.3%	594,153	597,236	-0.5%
Rocky Mountain	6,934	6,636	4.5%	145,885	139,315	4.7%	267,194	258,091	3.5%
Pacific Northwest	2,836	2,605	8.9%	88,195	83,561	5.5%	156,008	150,810	3.4%
Pacific Southwest	<u>6,030</u>	<u>7,184</u>	-16.1%	<u>158,734</u>	<u>158,711</u>	0.0%	<u>291,826</u>	<u>293,139</u>	-0.4%
Total United States *	87,961	96,314	-8.7%	2,231,304	2,183,834	2.2%	4,036,342	4,012,236	0.6%

Notes: EEI output data are an estimate of electricity load made available for distribution derived as weekly net generation + purchases from non-utilities + net imports - exports - sales for resale. It is not meant to be a measure of electricity generation for the U.S. EEI survey data represent the majority of national distribution (large utilities, large government power projects, some independent and large municipal power projects). The remaining segment of the industry (smaller producers) is estimated. Non-utility generation is captured via direct sales to utilities.

* Excludes Alaska and Hawaii

** Less than one-tenth of one percent

SOURCE: Edison Electric Institute (EEI), *Weekly Electric Output Report*.

AMERICAN IRON AND STEEL INSTITUTE
 1140 Connecticut Avenue, Suite 705
 Washington, D.C. 20036

July 24, 2007

ESTIMATED WEEKLY RAW STEEL* PRODUCTION

<u>Period</u>	<u>Thousand Net Tons</u>	<u>Percent Change from Previous Period</u>	<u>Percent Capability Utilization**</u>	<u>Production by District</u>		
				<u>Week Ending Jul 21</u>	<u>Jul 14</u>	
<u>Week Ending</u>				North East Coast	144	138
				Pgh/Youngstown	210	208
				Lake Erie	105	106
				Detroit	132	115
				Indiana/Chicago	515	520
				Midwest	248	251
				Southern	675	694
				Western	<u>89</u>	<u>92</u>
				Total	2118	2124
<u>Year-to-Date+</u>						
July 21, 2007	2,118	-0.2	89.5			
July 21, 2006	2,087	1.4	88.7			
July 14, 2007	2,124	1.0	89.8			
July 21, 2007	58,555	-6.1	84.3			
July 21, 2006	62,372	-	90.2			

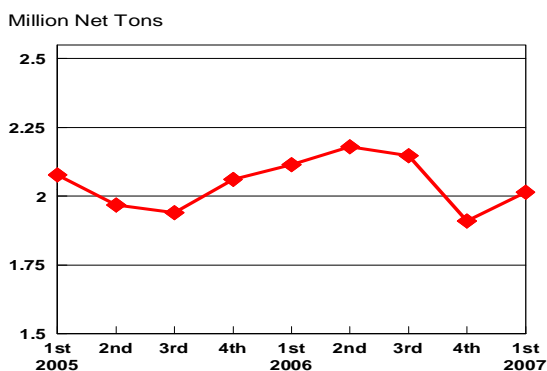
*Raw steel production tonnage included in this report is estimated based on a sampling of steel producers. Therefore, this report should be used primarily to assess production trends. The AISI production report "AIS 7," produced monthly and available by subscription, provides a more accurate summary of steel production based on data supplied by companies representing approximately 75% of U.S. production capacity.

+Includes revisions for previous months

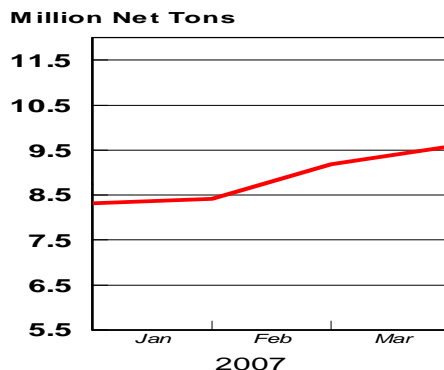
NOTE: Capability for the First Quarter 2007 is approximately 31.2 million net tons vs 30.5 million net tons for the same period last year, and 30.7 million tons for the fourth quarter of 2006.

Capability -	2003 approx.	2004	2005	2006	2007
	2.3 million tons/week	2.2	2.3	2.4	2.4

Average Weekly Raw Steel Production

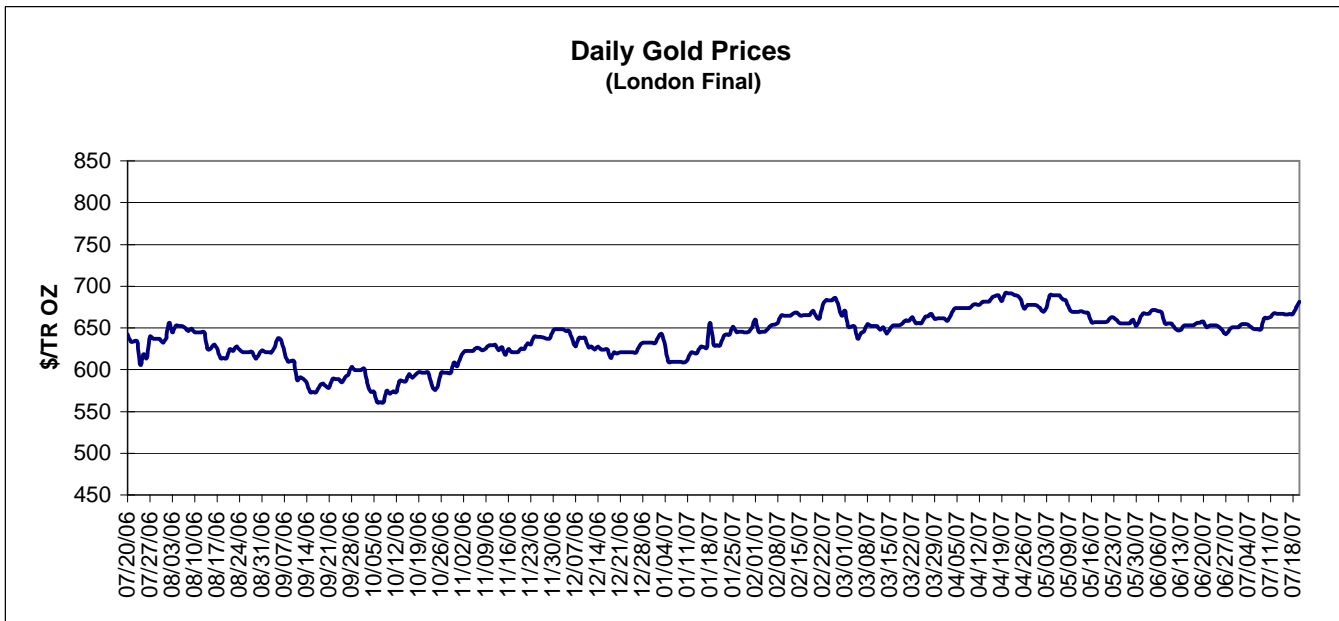
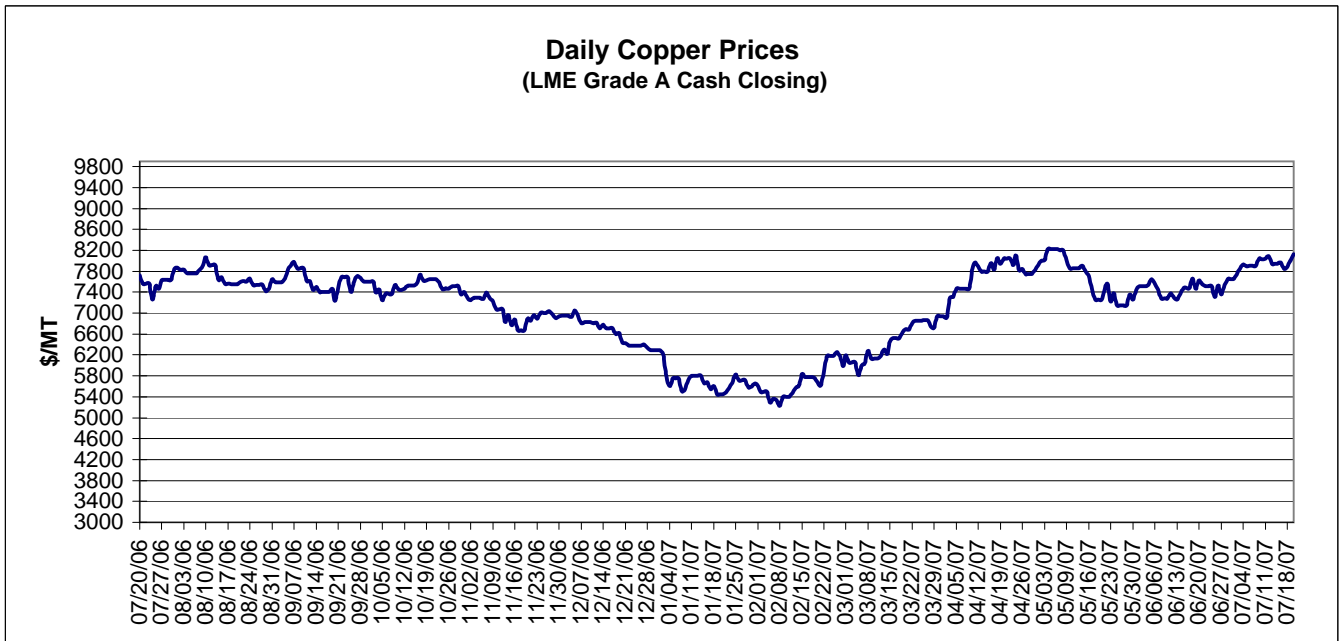


MONTHLY RAW STEEL PRODUCTION



*Steel in the first solid state after melting suitable for further processing or sale, including ingots, steel for castings and strand or pressure cast blooms, slabs, or other product forms.

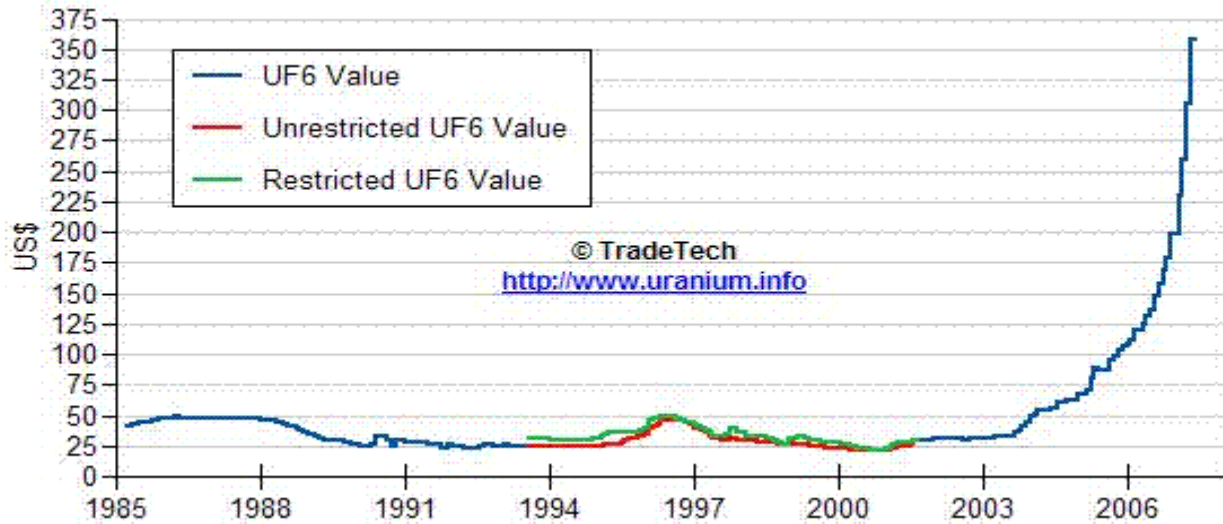
** Based on tonnage capability to produce raw steel for a sustained full order book.



Data reflect closings on weekends and holidays.

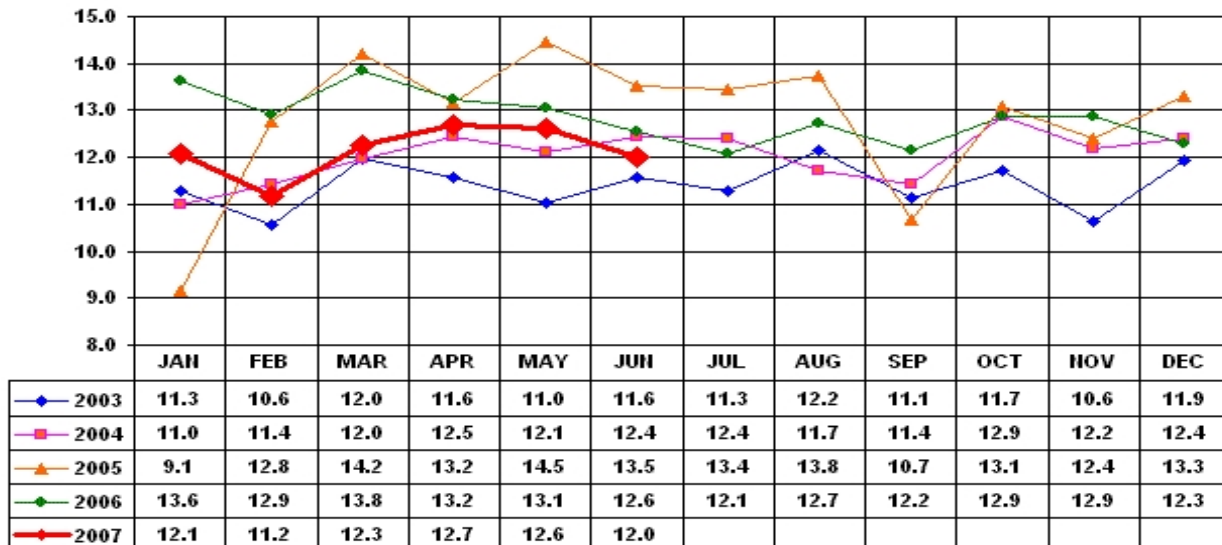
Source: Platts Metals Week

Trade Tech's Uranium (UF6) Monthly Spot Prices (US\$/kg as UF6)



Source: Trade Tech, Uranium Info Website – <http://www.uranium.info>

Coal and Coke Monthly Tonnage Indicator for Internal U.S. Waterways



Source: U.S. Army Corps of engineers, Waterborne Commerce Statistics Center