
National Mining Association

Weekly Statistical Summary

July 4, 2008 Edition
(Data for Week Ending June 28, 2008)

Prepared by
National Mining Association



Suite 500 East, 101 Constitution Avenue, NW
Washington, DC, 20001
Phone (202) 463-2600
Visit us at <http://www.nma.org>

NMA Weekly Statistical Summary

Vol. 46, No. 26
Dated 07/04/08

PRODUCTION, CONSUMPTION & TRADE						
	Week Ended			* Cumulative Jan 1 to		
	06/28/08	06/30/07	% Chng	06/28/08	06/28/07	% Chng
EIA Coal Production (000 Tons):						
Week Ended/Year to Date	21,767	22,249	-2.2%	570,483	565,990	0.8%
52 Weeks Ended	1,144,575	1,150,977	-0.6%			
* Due to leap year, 2008 cumulative reflects one extra day of tonnage.						
	May 08/07		% Chng	Jan - May 08/07		% Chng
Month Ended -- May	97,554	96,999	0.6%	490,862	475,947	3.1%
MONTH ENDED AND CUMULATIVE NUMBERS ARE PRELIMINARY AND SUBJECT TO CHANGE						
DOC Bituminous Coal Trade (000 Tons)						
	April 08/07		% Chng	Jan - Apr 08/07		% Chng
Exports:						
Metallurgical	4,300	2,405	78.8%	13,400	9,124	46.9%
Steam	3,621	2,415	49.9%	10,221	6,712	52.3%
Imports:	2,985	2,687	11.1%	10,626	11,473	-7.4%
	Week Ended			* Cumulative Jan 1 to		
	06/28/08	06/30/07	% Chng	06/28/08	06/30/07	% Chng
EEl Electric Output (Mil. Kwh)	84,580	85,316	-0.9%	1,984,091	1,973,670	0.5%
AISI Raw Steel Output (000 Tons)	2,108	2,119	-0.5%	54,409	53,117	2.4%
EIA U.S. PETROLEUM DATA						
4-Week Averages						
000 Barrels per Day						
	Week Ending			Cumulative Daily Averages		
	06/27/08	06/27/07	% Chng	2008	2007	% Chng
PETROLEUM SUPPLY:						
Domestic Crude	5,126	5,146	-0.4	5,113	5,188	-1.4
Net Imports (Incl. SPR)	10,065	9,964	1.1	9,745	9,992	-2.5
SPR Stocks W/D or Added	-62	-2	--	-51	-9	--
Other Stocks W/D or added	249	-222	--	-54	-235	--
Natural Gas Liquids Prod.	2,210	2,331	-5.2	2,272	2,349	-3.3



NMA

THE AMERICAN RESOURCE National Mining Association Web Site: [http:// www.nma.org](http://www.nma.org)

EIA Estimated Weekly U.S. Coal Production Overview (Thousand Short Tons)

Coal-Producing Region and State	Week Ended			Year to Date			52 Weeks Ended		
	6/28/2008	6/21/2008	6/30/2007	6/28/2008	6/28/2007	Percent Change	6/28/2008	6/30/2007	Percent Change
Alabama	395	366	344	10,593	9,727	8.9	20,311	18,775	8.2
Alaska	28	26	26	731	791	-7.7	1,258	1,500	-16.2
Arizona	161	149	151	3,501	4,031	-13.1	7,423	8,243	-9.9
Arkansas	1	1	1	34	36	-4.7	81	51	59.2
Colorado	829	769	754	17,771	17,880	-0.6	36,076	37,050	-2.6
Illinois	611	567	657	15,980	18,297	-12.7	30,070	35,198	-14.6
Indiana	717	665	648	17,708	17,268	2.5	35,301	35,059	0.7
Kansas	6	6	9	201	220	-8.6	400	488	-18.1
Kentucky Total	2,432	2,257	2,166	60,149	58,479	2.9	116,427	117,119	-0.6
Eastern	1,836	1,703	1,667	44,765	44,378	0.9	87,012	89,440	-2.7
Western	596	553	499	15,384	14,101	9.1	29,414	27,679	6.3
Louisiana	93	92	65	1,907	1,138	67.6	3,815	3,349	13.9
Maryland	42	39	41	1,144	1,134	0.9	2,296	3,355	-31.5
Mississippi	107	107	83	1,725	1,765	-2.2	3,484	3,646	-4.5
Missouri	4	4	4	115	116	-0.6	235	240	-2.3
Montana	859	797	743	22,493	19,798	13.6	45,883	41,570	10.4
New Mexico	508	471	556	10,794	12,838	-15.9	22,289	26,132	-14.7
North Dakota	577	536	506	14,088	14,432	-2.4	29,161	30,422	-4.1
Ohio	478	444	383	12,203	10,667	14.4	24,009	21,937	9.4
Oklahoma	37	34	32	867	833	4.0	1,675	1,764	-5.0
Pennsylvania Total	1,304	1,210	1,242	33,847	33,917	-0.2	64,861	65,717	-1.3
Anthracite	25	23	29	850	789	7.7	1,612	1,557	3.5
Bituminous	1,280	1,187	1,212	32,997	33,129	-0.4	63,248	64,160	-1.4
Tennessee	54	50	46	1,295	1,326	-2.3	2,604	2,696	-3.4
Texas	798	740	762	20,004	19,884	0.6	41,857	43,585	-4.0
Utah	485	450	474	12,717	12,356	2.9	24,566	25,062	-2.0
Virginia	490	455	529	11,710	14,261	-17.9	22,715	28,905	-21.4
Washington	--	--	--	--	--	--	0	1,099	-100.0
West Virginia Total	3,212	2,981	2,884	79,332	78,044	1.7	153,921	152,029	1.2
Northern	833	773	790	21,952	22,185	-1.1	41,558	41,797	-0.6
Southern	2,379	2,207	2,094	57,380	55,859	2.7	112,363	110,232	1.9
Wyoming	7,539	7,798	9,146	219,575	216,750	1.3	453,860	445,986	1.8
Appalachian Total	7,812	7,248	7,135	194,889	193,455	0.7	377,729	382,855	-1.3
Interior Total	2,970	2,770	2,759	73,925	73,658	0.4	146,330	151,058	-3.1
Western Total	10,985	10,995	12,355	301,670	298,877	0.9	620,515	617,064	0.6
East of Miss. River	9,843	9,140	9,021	245,685	244,887	0.3	475,998	484,437	-1.7
West of Miss. River	11,924	11,873	13,228	324,798	321,103	1.2	668,577	666,540	0.3
Bituminous and Lignite	21,742	20,990	22,220	569,634	565,201	0.8	1,142,963	1,149,420	-0.6
Anthracite	25	23	29	850	789	7.7	1,612	1,557	3.5
U.S. Total	21,767	21,013	22,249	570,483	565,990	0.8	1,144,575	1,150,977	-0.6
Railroad Cars Loaded	142,450	135,792	143,505	3,772,460	3,666,867	2.9	7,509,625	7,402,782	1.4

Source: Energy Information Administration



Volume 76 No. 26

OUTPUT FOR WEEK ENDED - Jun 28, 2008

Jul 02, 2008

The net available amount of electric energy distributed by the Total Electric Utility Industry+ for the week ended Saturday, Jun 28, 2008 was 84,580 gigawatthours (GWh), according to the Edison Electric Institute. This is equivalent to 180 on the weekly electric output index.

WEEKLY ELECTRIC OUTPUT BY GEOGRAPHIC DIVISION
(48 CONTIGUOUS STATES)

	Week Ended June 28		52 Weeks Ended June 28	
	GWh Output	% Increase Over Corresponding Week of 2007	GWh Output	% Increase Over Corresponding Period of 2007
New England	2,668	-8.4	132,884	-0.3
Mid-Atlantic	9,695	-2.9	455,378	0.5
Central Industrial	13,779	-5.3	718,833	1.0
West Central	6,884	-6.4	350,645	0.8
Southeast	22,337	-3.4	1,111,081	2.1
South Central	14,224	10.2	608,274	1.7
Rocky Mountain	6,239	2.9	277,550	4.6
Pacific Northwest	2,805	5.9	166,615	7.3
Pacific Southwest	5,949	3.0	289,773	-1.2
Total United States	84,580	-0.9	4,111,033	1.6

WEEKLY ELECTRIC OUTPUT IN PREVIOUS WEEKS--GWh

Week Ended	2008	Week Ended	2007	% Inc. (08/07)	52 Weeks Ended	2008	% Inc. (08/07)
Jun 07	82,141	Jun 09	78,952	4.0	Jun 07	4,108,126	1.6
Jun 14	87,195	Jun 16	81,410	7.1	Jun 14	4,113,911	1.7
Jun 21	82,466	Jun 23	84,607	-2.5	Jun 21	4,111,770	1.7
Jun 28	84,580	Jun 30	85,316	-0.9	Jun 28	4,111,033	1.6
Jun 28	1,984,091	Jun 30	1,973,670	0.5	YEAR TO DATE, FIRST 26 WEEKS		

WEEKLY ELECTRIC OUTPUT INDEX--TOTAL U.S.*
SEASONALLY ADJUSTED 1982 = 100

Week Ended	2008	Week Ended	2007	Week Ended	2006
Jun 07	188	Jun 09	r 185	Jun 10	187
Jun 14	191	Jun 16	181	Jun 17	181
Jun 21	180	Jun 23	188	Jun 24	193
Jun 28	180	Jun 30	183	Jul 01	181

* Excludes Alaska and Hawaii. r Revised.

+ Includes investor-owned companies, cooperatives and government-owned utilities.

Copyright © 2008 Edison Electric Institute. All rights reserved.

**WEEKLY ELECTRIC OUTPUT BY GEOGRAPHIC DIVISION
(48 CONTIGUOUS STATES)**

	Week Ended			NMA CUMULATIVE JANUARY WEEK ONE TO			52 Weeks Ended		
	28-Jun 2008 GWh Output	30-Jun 2007 GWh Output	% Increase Over Corresponding Week of 2007	28-Jun 2008 GWh Output	30-Jun 2007 GWh Output	% Increase Over Corresponding Week of 2007	28-Jun 2008 GWh Output	30-Jun 2007 GWh Output	% Increase Over Corresponding Week of 2007
New England	2,668	2,913	-8.4%	64,442	66,004	-2.4%	132,884	133,272	-0.3%
Mid-Atlantic	9,695	9,989	-2.9%	219,306	222,596	-1.5%	455,378	453,175	0.5%
Central Industrial	13,779	14,545	-5.3%	349,769	353,074	-0.9%	718,833	711,647	1.0%
West Central	6,884	7,358	-6.4%	168,937	170,507	-0.9%	350,645	347,844	0.8%
Southeast	22,337	23,113	-3.4%	535,343	530,921	0.8%	1,111,081	1,087,975	2.1%
South Central	14,224	12,911	10.2%	294,686	284,546	3.6%	608,274	598,187	1.7%
Rocky Mountain	6,239	6,063	2.9%	125,921	125,800	0.1%	277,550	265,439	4.6%
Pacific Northwest	2,805	2,650	5.8%	87,254	79,720	9.5%	166,615	155,333	7.3%
Pacific Southwest	5,949	5,775	3.0%	138,434	140,501	-1.5%	289,773	293,341	-1.2%
Total United States *	84,580	85,317	-0.9%	1,984,092	1,973,669	0.5%	4,111,033	4,046,213	1.6%

Notes: EEI output data are an estimate of electricity load made available for distribution derived as weekly net generation + purchases from non-utilities + net imports - exports - sales for resale. It is not meant to be a measure of electricity generation for the U.S. EEI survey data represent the majority of national distribution (large utilities, large government power projects, some independent and large municipal power projects). The remaining segment of the industry (smaller producers) is estimated. Non-utility generation is captured via direct sales to utilities.

* Excludes Alaska and Hawaii

** Less than one-tenth of one percent

SOURCE: Edison Electric Institute (EEI), *Weekly Electric Output Report*.

AMERICAN IRON AND STEEL INSTITUTE
 1140 Connecticut Avenue, Suite 705
 Washington, D.C. 20036

June 30, 2008

ESTIMATED WEEKLY RAW STEEL* PRODUCTION

<u>Period</u>	<u>Thousand Net Tons</u>	<u>Percent Change from Previous Period</u>	<u>Percent Capability Utilization**</u>	<u>Production by District</u>		
				<u>Week Ending June 28</u>	<u>Week Ending June 21</u>	
<u>Week Ending</u>				North East Coast	185	183
				Pgh/Youngstown	217	214
				Lake Erie	90	93
				Detroit	103	97
				Indiana/Chicago	492	473
				Midwest	271	261
				Southern	658	661
				Western	<u>92</u>	<u>94</u>
				Total	2,108	2,076
<u>Year-to-Date+</u>						
June 28, 2008	54,409	2.4	88.7			
June 28, 2007	53,117	-	85.7			

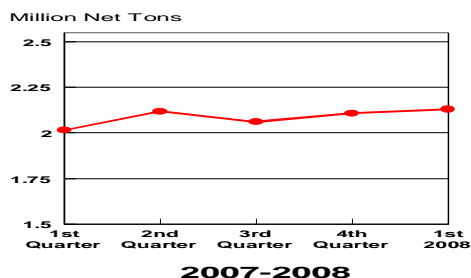
*Raw steel production tonnage included in this report is estimated based on a sampling of steel producers. Therefore, this report should be used primarily to assess production trends. The AISI production report "AIS 7," produced monthly and available by subscription, provides a more accurate summary of steel production based on data supplied by companies representing approximately 75% of U.S. production capacity.

+Includes revisions for previous months

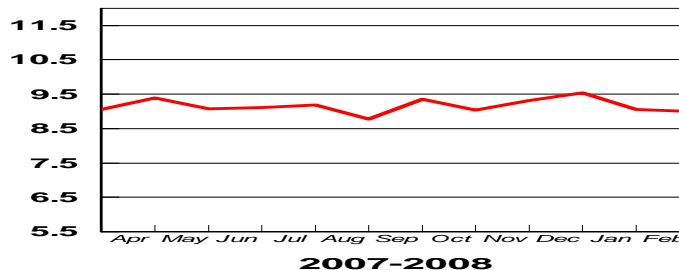
NOTE: Capability for the Fourth Quarter 2007 is approximately 31.3 million net tons vs 30.7 million net tons for the same period last year, and 30.1 million tons for the third quarter of 2007.

Capability -	2003 approx.	2.3 million tons/week
	2004	2.2
	2005	2.3
	2006	2.4
	2007	2.4

Average Weekly Raw Steel Production

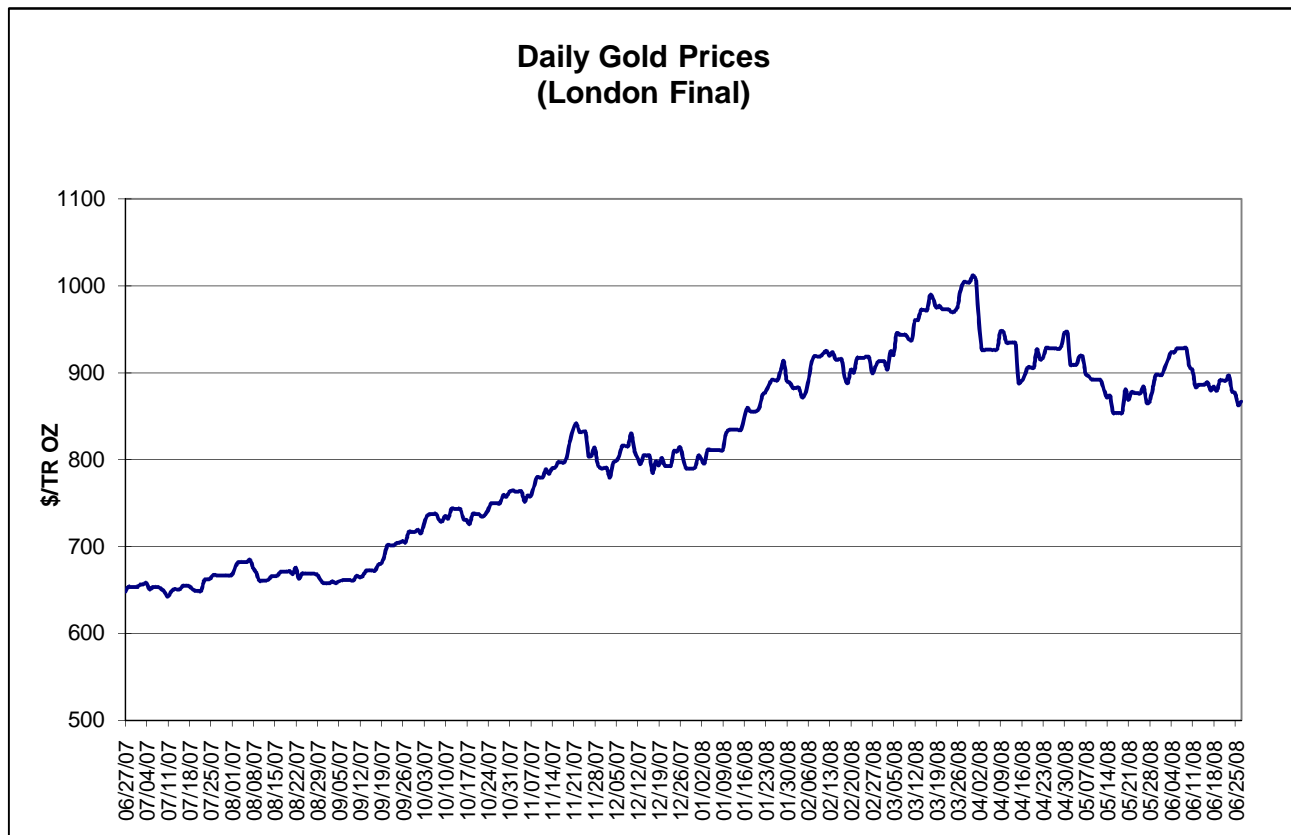
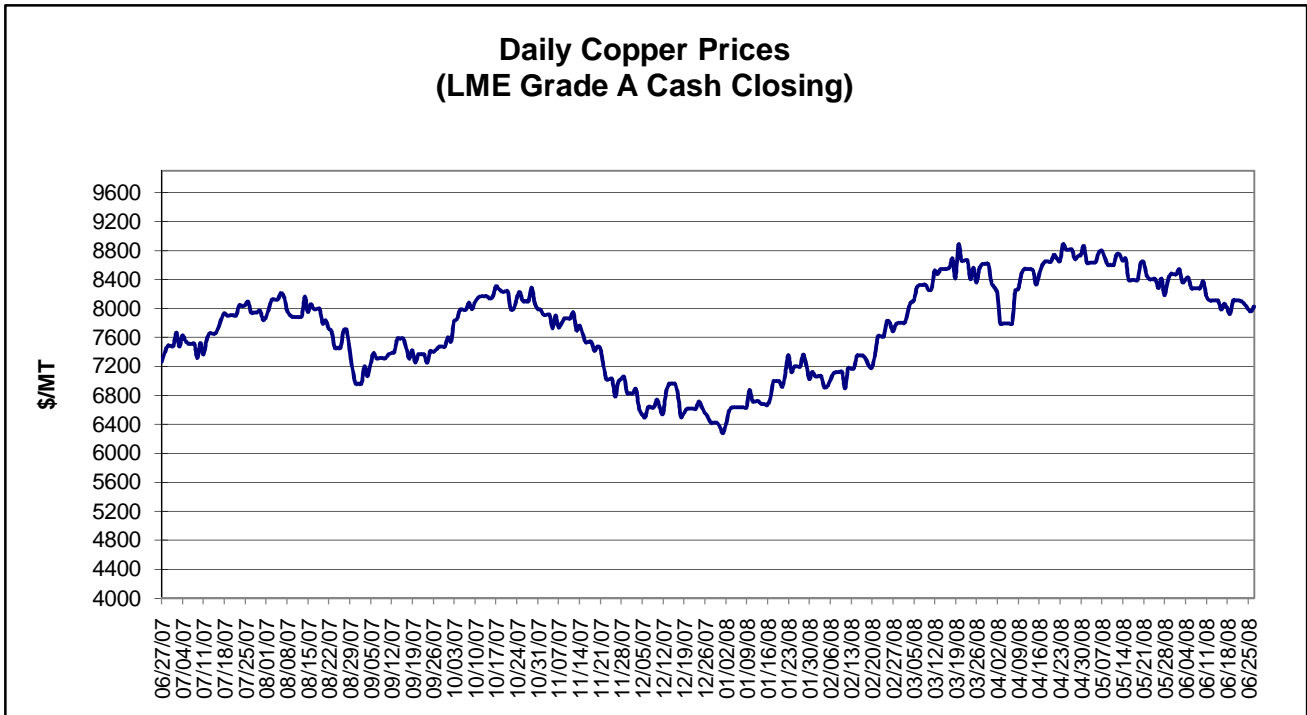


Monthly Raw Steel Production
 Million Net Tons



*Steel in the first solid state after melting suitable for further processing or sale, including ingots, steel for castings and strand or pressure cast blooms, slabs, or other product forms.

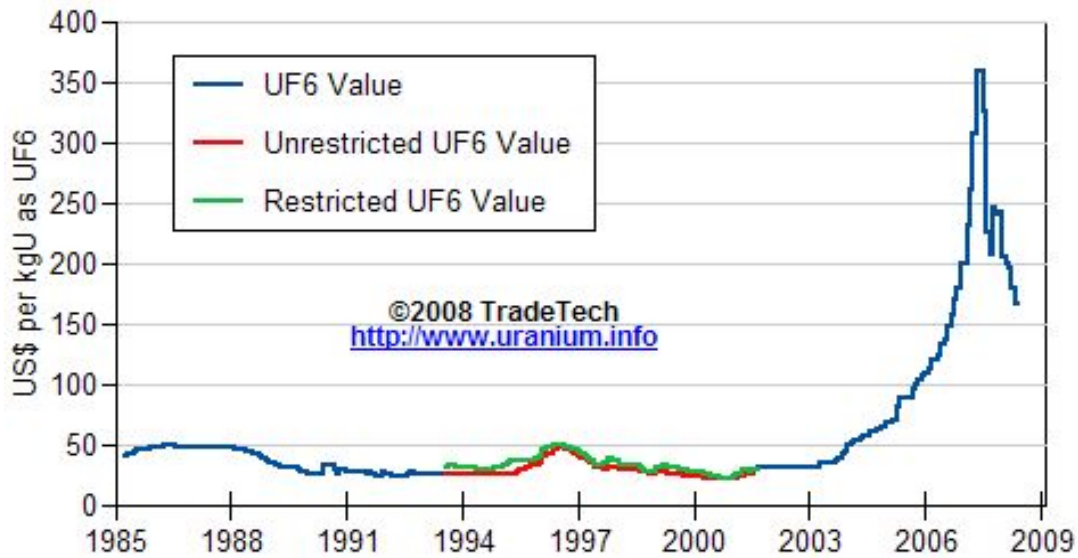
** Based on tonnage capability to produce raw steel for a sustained full order book.



Data reflect closings on weekends and holidays.

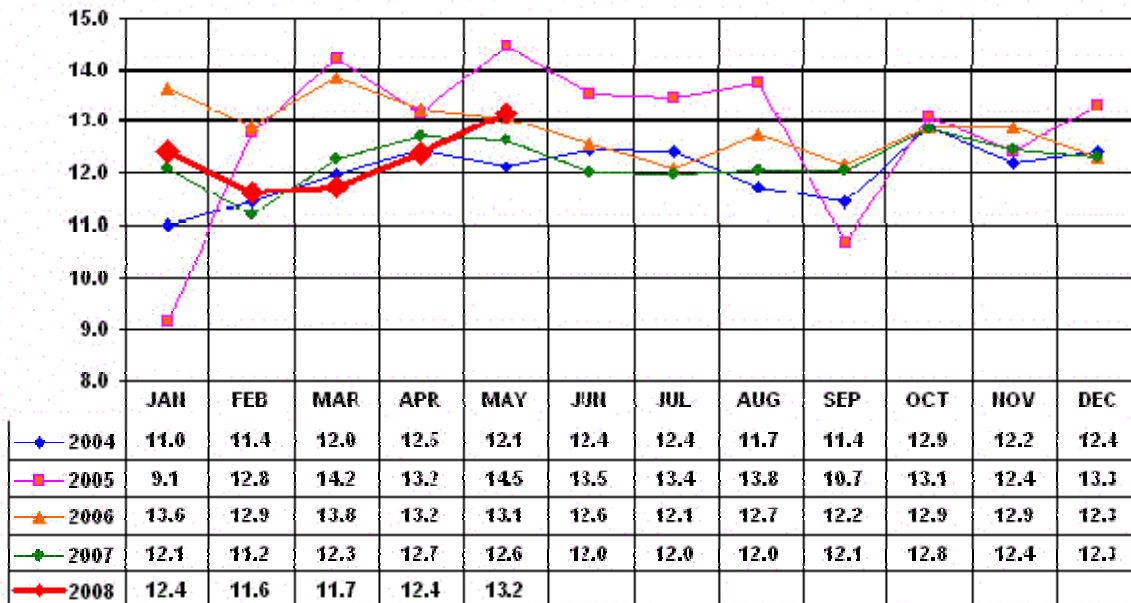
Source: Platts Metals Week

Trade Tech's Uranium (UF6) Monthly Spot Prices (US\$/kg as UF6)



Source: Trade Tech, Uranium Info Website – <http://www.uranium.info>

Coal and Coke Monthly Tonnage Indicator for Internal U.S. Waterways



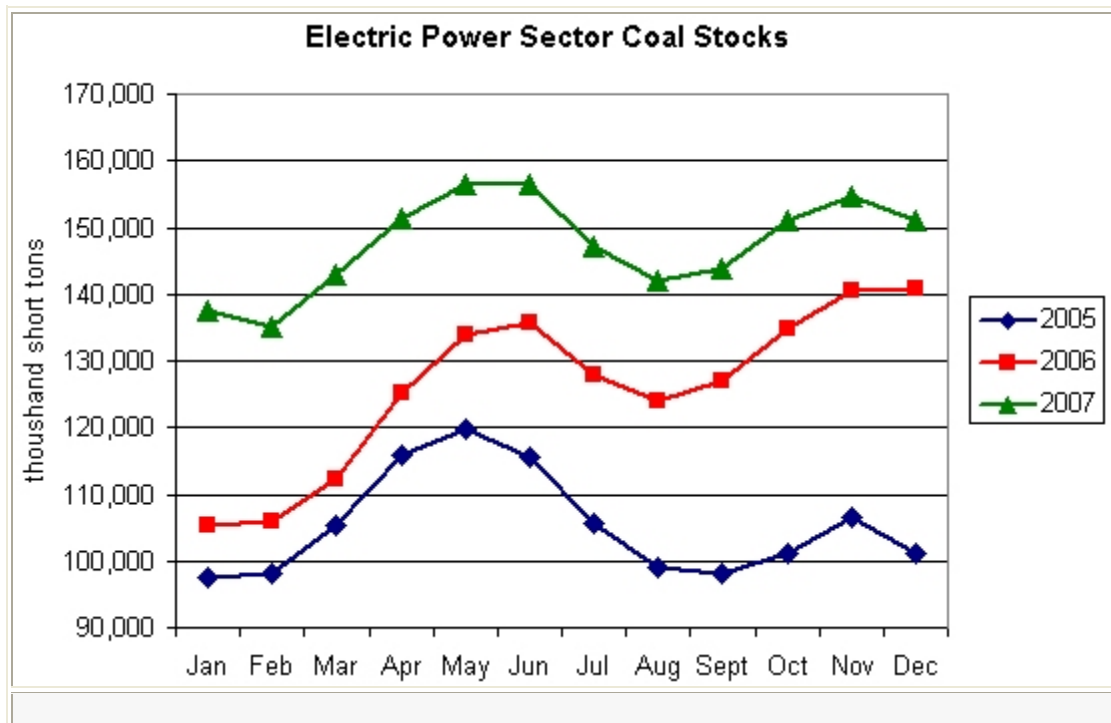
Source: U.S. Army Corps of Engineers, Waterborne Commerce Statistics Center

EIA Weekly Spot Coal Prices

The following average spot coal prices appear in the graphic below, for the previous and most recent weeks:
(Dollars per Short Ton)

Week Ended	Central Appalachia 12,500 Btu, 1.2 SO2	Northern Appalachia 13,000 Btu, <3.0 SO2	Illinois Basin 11,800 Btu, 5.0 SO2	Powder River Basin 8,800 Btu, 0.8 SO2	Uinta Basin 11,700 Btu, 0.8 SO2
23-May-08	\$104.25	\$105.00	\$65.00	\$14.15	\$44.00
30-May-08	\$108.25	\$105.00	\$65.00	\$14.10	\$44.00
06-June-08	\$108.25	\$105.00	\$65.00	\$13.30	\$44.00
13-June-08	\$117.60	\$108.50	\$65.00	\$13.30	\$54.00
20-June-08	\$117.60	\$118.00	\$65.00	\$13.25	\$54.00
27-June-08	\$117.60	\$118.00	\$65.00	\$12.75	\$54.00

Source: Energy Information Administration (from *Platts Coal Outlook*, "Weekly Price Survey")



Source: Energy Information Administration

USGS Production of Selected Mineral Commodities	2008 First Quarter	2007 First Quarter	Percent Change
Aluminum, secondary (000 Mt.)	240.0	243.0	-1%
Cement (Mil. Mt.)	17.2	18.0	-4%
Gypsum (Mil. Mt.) *	4.7	5.4	-13%
Iron Ore (Mil. Mt.)	12.9	11.4	13%
Phosphate rock (Mil. Mt.)	7.6	7.1	7%
Sand & gravel, construction (Mil. Mt.)	184.0	194.0	-5%
Soda ash (Mil. Mt.)	2.8	2.7	4%
Stone, crushed (Mil. Mt.)	280.0	263.0	6%
Zinc (000 Mt.)	207.0	181.0	14%

Source: U.S. Geological Survey, Mineral Industry Surveys, *U.S. Production of Selected Mineral Commodities in the First Quarter 2008*

* Revised June 16, 2008. Note - data are preliminary.