
National Mining Association

Weekly Statistical Summary

July 6, 2007 Edition
(Data for Week Ending June 30, 2007)

Prepared by
National Mining Association



Suite 500 East, 101 Constitution Avenue, NW
Washington, DC, 20001
Phone (202) 463-2600
Visit us at <http://www.nma.org>

NMA Weekly Statistical Summary

Vol. 45, No. 26
Dated 07/06/07

PRODUCTION, CONSUMPTION & TRADE						
	Week Ended			Cumulative Jan 1 to		
	06/30/07	07/01/06	% Chng	06/30/07	07/01/06	% Chng
EIA Coal Production (000 Tons):						
Week Ended/Year to Date	22,091	21,941	0.7%	568,189	581,498	-2.3%
52 Weeks Ended	1,146,447	1,144,810	0.1%			
Month Ended -- June						
	94,813	97,141	-2.4%	568,189	581,498	-2.3%
MONTH ENDED AND CUMULATIVE NUMBERS ARE PRELIMINARY AND SUBJECT TO CHANGE						
DOC Bituminous Coal Trade (000 Tons)						
Exports:	April 07/06			Jan - Apr 07/06		
			% Chng			% Chng
Metallurgical	2,405	2,047	17.5%	9,124	8,612	5.9%
Steam	2,415	1,401	72.4%	6,712	5,331	25.9%
Imports:	2,687	3,030	-11.3%	11,473	11,987	-4.3%
EEI Electric Output (Mil. Kwh)						
	85,316	83,095	2.7%	1,973,670	1,916,325	3.0%
AISI Raw Steel Output (000 Tons)						
	2,067	2,207	-6.3%	52,211	56,111	-7.0%
EIA U.S. PETROLEUM DATA						
4-Week Averages 000 Barrels per Day						
PETROLEUM SUPPLY:						
	Week Ending			Cumulative Daily Averages		
	06/29/07	06/29/06	% Chng	2007	2006	% Chng
Domestic Crude	5,123	5,219	-1.8	5,175	5,081	1.9
Net Imports (Incl. SPR)	10,530	10,648	-1.1	10,111	9,988	1.2
SPR Stocks W/D or Added	0	25	--	-9	-19	--
Other Stocks W/D or added	-418	147	--	-240	-72	--
Natural Gas Liquids Prod.	2,432	2,000	21.2	2,336	2,141	9.1



NMA
THE AMERICAN RESOURCE

National Mining Association Web Site: [http:// www.nma.org](http://www.nma.org)

EIA Estimated Weekly U.S. Coal Production Overview (Thousand Short Tons)

Coal-Producing Region and State	Week Ended			Year to Date			52 Weeks Ended		
	6/30/2007	6/23/2007	7/1/2006	6/30/2007	6/30/2006	Percent Change	6/30/2007	7/1/2006	Percent Change
Alabama	375	411	310	10,185	10,042	1.4	19,163	19,923	-3.8
Alaska	26	28	29	796	721	10.4	1,500	1,249	20.2
Arizona	144	158	180	3,971	4,034	-1.6	8,153	9,747	-16.4
Arkansas	1	1	1	26	8	217.5	40	10	318.0
Colorado	716	785	581	17,563	17,275	1.7	36,535	36,092	1.2
Illinois	604	662	576	17,651	15,950	10.7	33,866	31,047	9.1
Indiana	666	730	652	17,963	17,792	1.0	35,890	34,986	2.6
Kansas	8	9	10	220	160	37.6	486	249	95.1
Kentucky Total	2,167	2,376	2,352	58,580	62,554	-6.4	116,309	121,471	-4.3
Eastern	1,626	1,783	1,871	43,802	48,770	-10.2	88,067	94,442	-6.8
Western	541	593	482	14,777	13,783	7.2	28,242	27,029	4.5
Louisiana	88	105	93	1,314	1,911	-31.2	3,508	4,109	-14.6
Maryland	97	106	104	1,898	2,840	-33.2	4,110	5,299	-22.4
Mississippi	86	67	91	1,814	1,928	-5.9	3,673	3,715	-1.1
Missouri	6	6	9	134	271	-50.4	257	589	-56.3
Montana	754	828	793	20,159	20,154	*	41,729	41,014	1.7
New Mexico	471	517	415	11,815	12,727	-7.2	24,991	27,663	-9.7
North Dakota	492	540	491	14,350	14,523	-1.2	30,238	30,059	0.6
Ohio	447	491	380	11,605	11,522	0.7	22,790	23,892	-4.6
Oklahoma	38	41	37	920	1,074	-14.3	1,845	2,003	-7.9
Pennsylvania Total	1,147	1,258	1,298	32,849	34,581	-5.0	64,336	68,137	-5.6
Anthracite	26	28	26	749	755	-0.9	1,508	1,612	-6.5
Bituminous	1,121	1,229	1,273	32,100	33,826	-5.1	62,828	66,525	-5.6
Tennessee	53	58	47	1,420	1,444	-1.6	2,780	3,024	-8.1
Texas	860	943	787	21,399	21,936	-2.4	44,889	45,793	-2.0
Utah	435	477	508	11,936	13,403	-10.9	24,539	25,593	-4.1
Virginia	538	590	573	14,468	15,324	-5.6	28,990	28,939	0.2
Washington	0	0	39	0	1,481	-100.0	1,099	4,040	-72.8
West Virginia Total	2,768	3,036	2,887	77,363	78,909	-2.0	150,236	154,198	-2.6
Northern	857	940	841	23,495	22,937	2.4	43,229	44,094	-2.0
Southern	1,911	2,096	2,046	53,868	55,971	-3.8	107,007	110,104	-2.8
Wyoming	9,106	8,029	8,698	217,791	218,935	-0.5	444,494	421,970	5.3
Appalachian Total	7,051	7,733	7,470	193,589	203,432	-4.8	380,472	397,853	-4.4
Interior Total	2,896	3,157	2,737	76,219	74,813	1.9	152,697	149,530	2.1
Western Total	12,144	11,361	11,734	298,380	303,253	-1.6	613,278	597,427	2.7
East of Miss. River	8,947	9,785	9,270	245,794	252,885	-2.8	482,143	494,630	-2.5
West of Miss. River	13,144	12,467	12,670	322,394	328,614	-1.9	664,304	650,180	2.2
Bituminous and Lignite	22,065	22,224	21,915	567,440	580,743	-2.3	1,144,939	1,143,198	0.2
Anthracite	26	28	26	749	755	-0.9	1,508	1,612	-6.5
U.S. Total	22,091	22,252	21,941	568,189	581,498	-2.3	1,146,447	1,144,810	0.1
Railroad Cars Loaded	143,505	145,316	142,928	3,666,867	3,719,442	-1.4	7,402,782	7,280,558	1.7

Source: Energy Information Administration

EIA Estimated Monthly U.S. Coal Production Overview (Thousand Short Tons)

Coal-Producing Region and State	Week Ended		Year to Date		Month Ended		January - June		
	6/30/2007	7/1/2006	6/30/2007	6/30/2006	June 2007	June 2006	2007	2006	Percent Change
	Alabama	375	310	10,185	10,042	1,732	1,449	10,185	10,042
Alaska	26	29	796	721	115	130	796	721	10.4
Arizona	144	180	3,971	4,034	663	802	3,971	4,034	-1.6
Arkansas	1	1	26	8	3	4	26	8	217.5
Colorado	716	581	17,563	17,275	3,243	2,603	17,563	17,275	1.7
Illinois	604	576	17,651	15,950	2,735	2,573	17,651	15,950	10.7
Indiana	666	652	17,963	17,792	3,052	2,959	17,963	17,792	1.0
Kansas	8	10	220	160	39	45	220	160	37.6
Kentucky Total	2,167	2,352	58,580	62,554	9,864	10,616	58,580	62,554	-6.4
Eastern	1,626	1,871	43,802	48,770	7,403	8,454	43,802	48,770	-10.2
Western	541	482	14,777	13,783	2,461	2,163	14,777	13,783	7.2
Louisiana	88	93	1,314	1,911	372	379	1,314	1,911	-31.2
Maryland	97	104	1,898	2,840	439	473	1,898	2,840	-33.2
Mississippi	86	91	1,814	1,928	337	386	1,814	1,928	-5.9
Missouri	6	9	134	271	26	40	134	271	-50.4
Montana	754	793	20,159	20,154	3,419	3,447	20,159	20,154	*
New Mexico	471	415	11,815	12,727	2,164	1,964	11,815	12,727	-7.2
North Dakota	492	491	14,350	14,523	2,274	2,271	14,350	14,523	-1.2
Ohio	447	380	11,605	11,522	2,054	1,730	11,605	11,522	0.7
Oklahoma	38	37	920	1,074	173	171	920	1,074	-14.3
Pennsylvania Total	1,147	1,298	32,849	34,581	5,258	5,946	32,849	34,581	-5.0
Anthracite	26	26	749	755	118	118	749	755	-0.9
Bituminous	1,121	1,273	32,100	33,826	5,140	5,827	32,100	33,826	-5.1
Tennessee	53	47	1,420	1,444	238	215	1,420	1,444	-1.6
Texas	860	787	21,399	21,936	3,910	3,368	21,399	21,936	-2.4
Utah	435	508	11,936	13,403	1,970	2,280	11,936	13,403	-10.9
Virginia	538	573	14,468	15,324	2,453	2,571	14,468	15,324	-5.6
Washington	0	39	0	1,481	0	191	0	1,481	-100.0
West Virginia Total	2,768	2,887	77,363	78,909	12,623	13,080	77,363	78,909	-2.0
Northern	857	841	23,495	22,937	3,871	3,800	23,495	22,937	2.4
Southern	1,911	2,046	53,868	55,971	8,752	9,279	53,868	55,971	-3.8
Wyoming	9,106	8,698	217,791	218,935	35,657	37,450	217,791	218,935	-0.5
Appalachian Total	7,051	7,470	193,589	203,432	32,201	33,917	193,589	203,432	-4.8
Interior Total	2,896	2,737	76,219	74,813	13,108	12,087	76,219	74,813	1.9
Western Total	12,144	11,734	298,380	303,253	49,504	51,138	298,380	303,253	-1.6
East of Miss. River	8,947	9,270	245,794	252,885	40,785	41,998	245,794	252,885	-2.8
West of Miss. River	13,144	12,670	322,394	328,614	54,027	55,144	322,394	328,614	-1.9
Bituminous and Lignite	22,065	21,915	567,440	580,743	94,695	97,023	567,440	580,743	-2.3
Anthracite	26	26	749	755	118	118	749	755	-0.9
U.S. Total	22,091	21,941	568,189	581,498	94,813	97,141	568,189	581,498	-2.3
Railroad Cars Loaded	143,505	142,928	3,666,867	3,719,442	--	--	--	--	--

Source: Energy Information Administration



WEEKLY ELECTRIC OUTPUT

Essential Energy Information from E.E.I.'s Statistics Department

Volume 75 No. 26

OUTPUT FOR WEEK ENDED - Jun 30, 2007

Jul 05, 2007

The net available amount of electric energy distributed by the Total Electric Utility Industry* for the week ended Saturday, Jun 30, 2007 was 85,316 gigawatthours (GWh), according to the Edison Electric Institute. This is equivalent to 183 on the weekly electric output index.

WEEKLY ELECTRIC OUTPUT BY GEOGRAPHIC DIVISION

(48 CONTIGUOUS STATES)

	Week Ended June 30		52 Weeks Ended June 30	
	GWh Output	% Increase Over Corresponding Week of 2006	GWh Output	% Increase Over Corresponding Period of 2006
New England	2,913	3.8	133,272	-0.7
Mid-Atlantic	9,989	3.9	453,175	0.5
Central Industrial	14,545	7.2	711,647	1.1
West Central	7,358	8.4	347,844	0.5
Southeast	23,113	5.1	1,087,975	0.8
South Central	12,911	-4.3	598,187	0.3
Rocky Mountain	6,063	4.6	265,439	3.0
Pacific Northwest	2,650	-0.2	155,333	3.1
Pacific Southwest	5,775	-9.7	293,341	0.3
Total United States	85,316	2.7	4,046,213	0.9

WEEKLY ELECTRIC OUTPUT IN PREVIOUS WEEKS--GWh

Week Ended	2007	Week Ended	2006	% Inc. (07/06)	52 Weeks Ended	2007	% Inc. (07/06)
Jun 09	78,952	Jun 10	78,485	0.6	Jun 09	4,044,205	0.8
Jun 16	81,410	Jun 17	79,886	1.9	Jun 16	4,045,729	0.9
Jun 23	84,607	Jun 24	86,345	-2.0	Jun 23	4,043,992	0.7
Jun 30	85,316	Jul 01	83,095	2.7	Jun 30	4,046,213	0.9
Jun 30	1,973,670	Jul 01	1,916,325	3.0	YEAR TO DATE, FIRST 26 WEEKS		

WEEKLY ELECTRIC OUTPUT INDEX--TOTAL U.S.*

SEASONALLY ADJUSTED 1982 = 100

Week Ended	2007	Week Ended	2006	Week Ended	2005
Jun 09	194	Jun 10	187	Jun 11	188
Jun 16	181	Jun 17	181	Jun 18	184
Jun 23	188	Jun 24	193	Jun 25	175
Jun 30	183	Jul 01	181	Jul 02	190

* Excludes Alaska and Hawaii

+ Includes investor-owned companies, cooperatives and government-owned utilities.

Copyright © 2007 Edison Electric Institute. All rights reserved.

WEEKLY ELECTRIC OUTPUT BY GEOGRAPHIC DIVISION (48 CONTIGUOUS STATES)

	Week Ended			NMA CUMULATIVE JANUARY 1 to			52 Weeks Ended		
	30-Jun 2007 GWh Output	1-Jul 2006 GWh Output	% Increase Over Corresponding Week of 2006	30-Jun 2007 GWh Output	1-Jul 2006 GWh Output	% Increase Over Corresponding Week of 2006	30-Jun 2007 GWh Output	1-Jul 2006 GWh Output	% Increase Over Corresponding Week of 2006
New England	2,913	2,807	3.8%	66,004	64,556	2.2%	133,272	134,275	-0.7%
Mid-Atlantic	9,989	9,614	3.9%	222,596	213,170	4.4%	453,175	451,097	0.5%
Central Industrial	14,545	13,566	7.2%	353,074	336,314	5.0%	711,647	704,049	1.1%
West Central	7,358	6,785	8.4%	170,507	166,811	2.2%	347,844	345,995	0.5%
Southeast	23,113	21,982	5.1%	530,921	515,036	3.1%	1,087,975	1,079,211	0.8%
South Central	12,911	13,494	-4.3%	284,546	284,732	-0.1%	598,187	596,491	0.3%
Rocky Mountain	6,063	5,794	4.6%	125,800	120,985	4.0%	265,439	257,587	3.0%
Pacific Northwest	2,650	2,655	-0.2%	79,720	75,761	5.2%	155,333	150,600	3.1%
Pacific Southwest	<u>5,775</u>	<u>6,398</u>	-9.7%	<u>140,501</u>	<u>138,962</u>	1.1%	<u>293,341</u>	<u>292,356</u>	0.3%
Total United States *	85,317	83,095	2.7%	1,973,669	1,916,327	3.0%	4,046,213	4,011,661	0.9%

Notes: EEI output data are an estimate of electricity load made available for distribution derived as weekly net generation + purchases from non-utilities + net imports - exports - sales for resale. It is not meant to be a measure of electricity generation for the U.S. EEI survey data represent the majority of national distribution (large utilities, large government power projects, some independent and large municipal power projects). The remaining segment of the industry (smaller producers) is estimated. Non-utility generation is captured via direct sales to utilities.

* Excludes Alaska and Hawaii

** Less than one-tenth of one percent

SOURCE: Edison Electric Institute (EEI), *Weekly Electric Output Report*.

AMERICAN IRON AND STEEL INSTITUTE
 1140 Connecticut Avenue, Suite 705
 Washington, D.C. 20036

July 2, 2007

ESTIMATED WEEKLY RAW STEEL* PRODUCTION

<u>Period</u>	<u>Thousand Net Tons</u>	<u>Percent Change from Previous Period</u>	<u>Percent Capability Utilization**</u>	<u>Production by District</u>	
				<u>Week Ending</u>	
				<u>Jun 30</u>	<u>Jun 23</u>
<u>Week Ending</u>					
June 30, 2007	2,067	-1.6	86.4	North East Coast 143	144
June 30, 2006	2,207	-6.3	92.1	Pgh/Youngstown 208	211
June 23, 2007	2,101	0.8	87.8	Lake Erie 111	109
				Detroit 128	126
				Indiana/Chicago 531	523
				Midwest 241	247
				Southern 613	650
				Western 92	91
				Total 2067	2101
<u>Year-to-Date+</u>					
June 30, 2007	52,211	-6.9	84.9		
June 30, 2006	56,111	-	90.5		

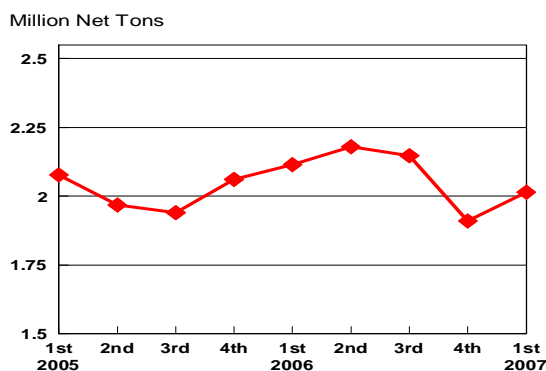
*Raw steel production tonnage included in this report is estimated based on a sampling of steel producers. Therefore, this report should be used primarily to assess production trends. The AISI production report "AIS 7," produced monthly and available by subscription, provides a more accurate summary of steel production based on data supplied by companies representing approximately 75% of U.S. production capacity.

+Includes revisions for previous months

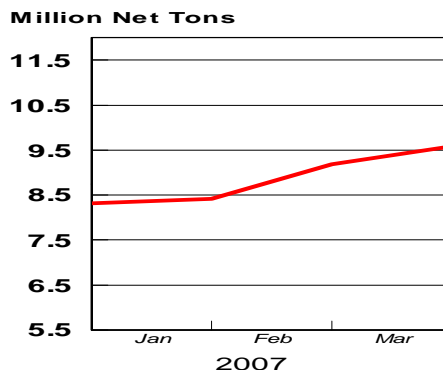
NOTE: Capability for the First Quarter 2007 is approximately 31.2 million net tons vs 30.5 million net tons for the same period last year, and 30.7 million tons for the fourth quarter of 2006.

Capability -	2003 approx.	2004	2005	2006	2007
	2.3 million tons/week	2.2	2.3	2.4	2.4

Average Weekly Raw Steel Production

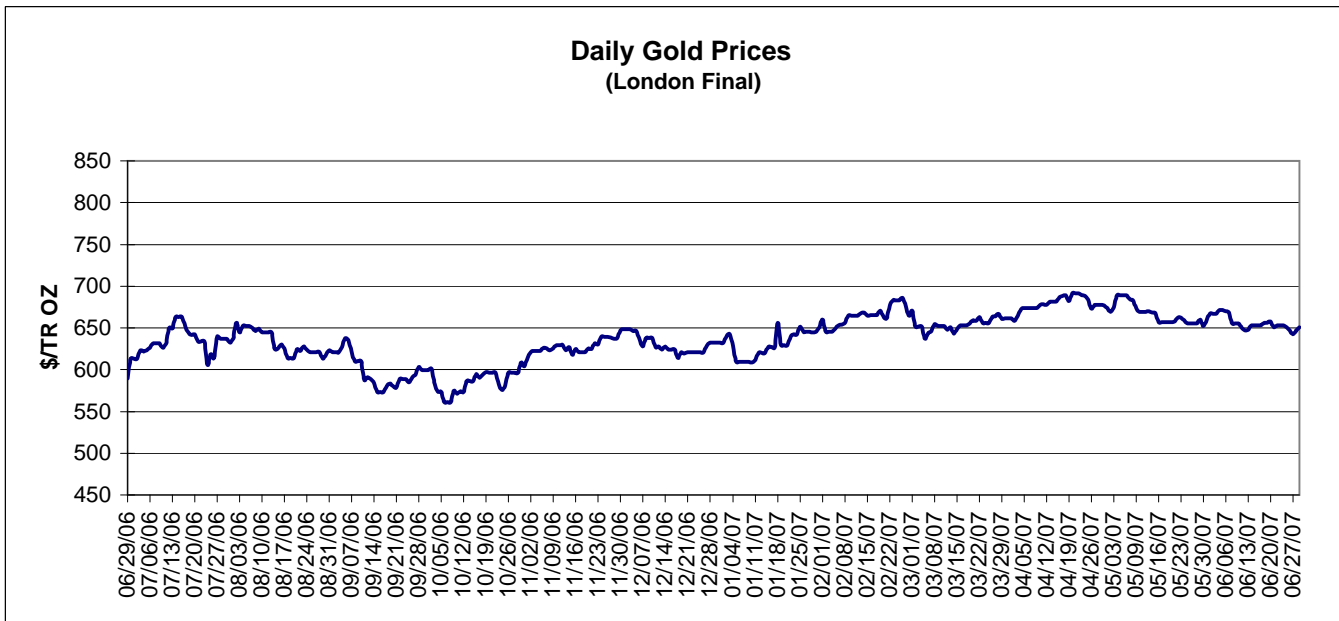
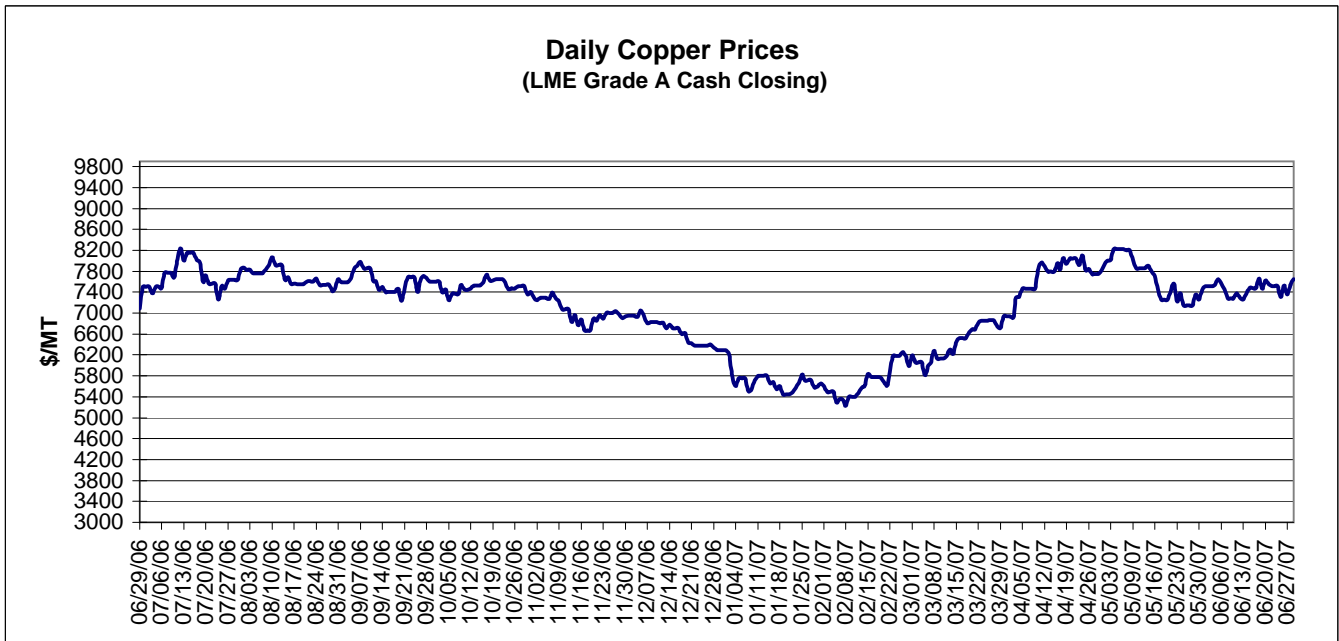


MONTHLY RAW STEEL PRODUCTION



*Steel in the first solid state after melting suitable for further processing or sale, including ingots, steel for castings and strand or pressure cast blooms, slabs, or other product forms.

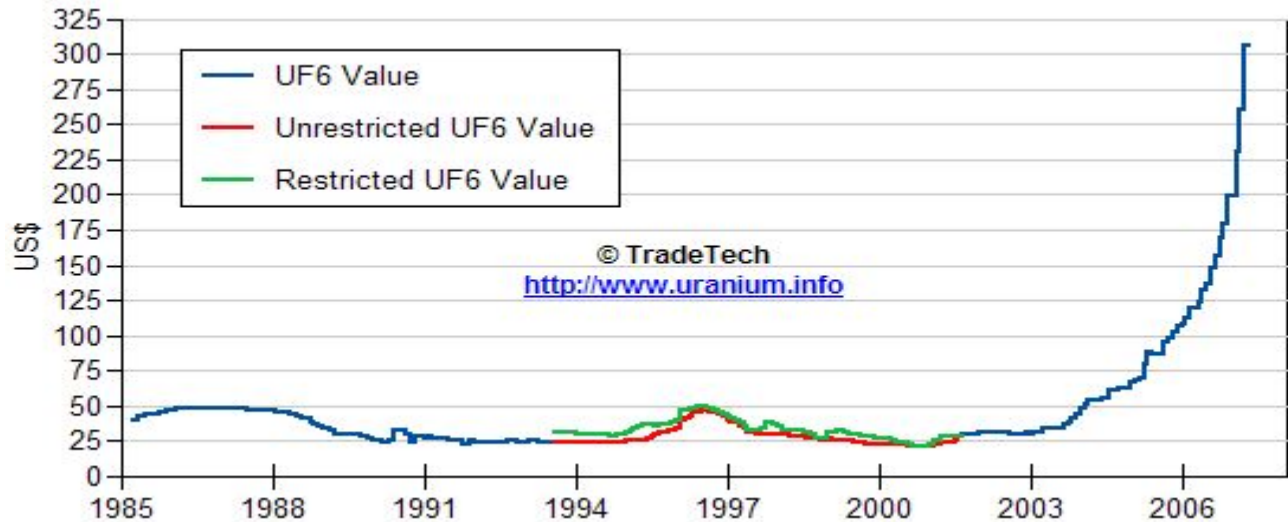
** Based on tonnage capability to produce raw steel for a sustained full order book.



Data reflect closings on weekends and holidays.

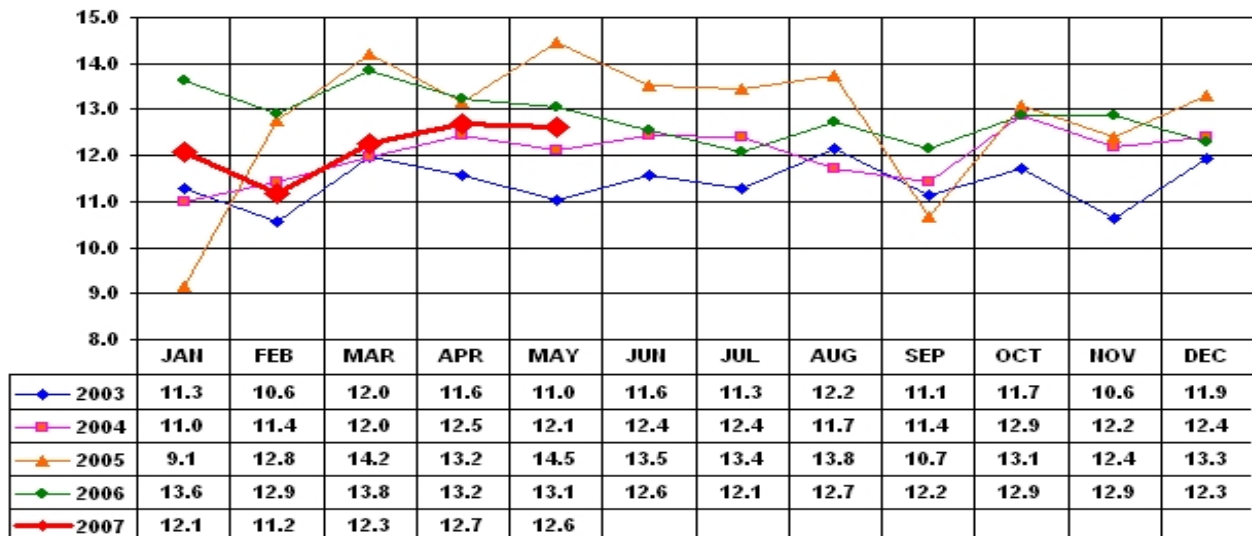
Source: Platts Metals Week

Trade Tech's Uranium (UF6) Monthly Spot Prices (US\$/kg as UF6)



Source: Trade Tech, Uranium Info Website – <http://www.uranium.info>

Coal and Coke Monthly Tonnage Indicator for Internal U.S. Waterways



Source: U.S. Army Corps of engineers, Waterborne Commerce Statistics Center