
National Mining Association

Weekly Statistical Summary

August 1, 2008 Edition
(Data for Week Ending July 26, 2008)

Prepared by
National Mining Association



Suite 500 East, 101 Constitution Avenue, NW
Washington, DC, 20001
Phone (202) 463-2600
Visit us at <http://www.nma.org>

NMA Weekly Statistical Summary

Vol. 46, No. 30
Dated 08/01/08

PRODUCTION, CONSUMPTION & TRADE						
	Week Ended			* Cumulative Jan 1 to		
	07/26/08	07/28/07	% Chng	07/26/08	07/26/07	% Chng
EIA Coal Production (000 Tons):						
Week Ended/Year to Date	22,730	22,172	2.5%	656,687	649,975	1.0%
52 Weeks Ended	1,147,873	1,147,063	0.1%			
* Due to leap year, 2008 cumulative reflects one extra day of tonnage.						
	June 08/07		% Chng	Jan - June 08/07		% Chng
Month Ended -- June	90,912	95,566	-4.9%	575,581	571,728	0.7%
MONTH ENDED AND CUMULATIVE NUMBERS ARE PRELIMINARY AND SUBJECT TO CHANGE						
DOC Bituminous Coal Trade (000 Tons)						
	May 08/07		% Chng	Jan - May 08/07		% Chng
Exports:						
Metallurgical	4,842	2,626	84.4%	18,243	11,749	55.3%
Steam	3,492	2,086	67.4%	13,713	8,798	55.9%
Imports:	2,702	2,691	0.4%	13,328	14,164	-5.9%
	Week Ended			* Cumulative Jan 1 to		
	07/26/08	07/28/07	% Chng	07/26/08	07/28/07	% Chng
EEl Electric Output (Mil. Kwh)	91,262	86,636	5.3%	2,335,845	2,317,941	0.8%
AISI Raw Steel Output (000 Tons)	2,142	2,059	4.0%	62,842	61,353	2.4%
EIA U.S. PETROLEUM DATA						
4-Week Averages 000 Barrels per Day						
	Week Ending			Cumulative Daily Averages		
	07/25/08	07/25/07	% Chng	2008	2007	% Chng
PETROLEUM SUPPLY:						
Domestic Crude	5,106	5,123	-0.3	5,121	5,179	-1.1
Net Imports (Incl. SPR)	10,010	9,883	1.3	9,795	9,977	-1.8
SPR Stocks W/D or Added	-17	0	--	-46	-8	--
Other Stocks W/D or added	162	420	--	-17	-146	--
Natural Gas Liquids Prod.	2,188	2,465	-11.2	2,223	2,365	-6.0



NMA

THE AMERICAN RESOURCE National Mining Association Web Site: [http:// www.nma.org](http://www.nma.org)

EIA Estimated Weekly U.S. Coal Production Overview (Thousand Short Tons)

Coal-Producing Region and State	Week Ended			Year-To-Date			52 Weeks Ended		
	7/26/2008	7/19/2008	7/28/2007	7/26/2008	7/26/2007	Percent Change	7/26/2008	7/28/2007	Percent Change
Alabama	378	371	366	12,001	11,103	8.1	20,345	18,804	8.2
Alaska	27	27	13	832	843	-1.4	1,309	1,455	-10.0
Arizona	154	152	159	4,075	4,628	-11.9	7,398	8,209	-9.9
Arkansas	1	1	2	38	43	-11.5	77	57	36.6
Colorado	793	780	715	20,727	20,585	0.7	36,337	36,929	-1.6
Illinois	585	575	584	18,158	20,702	-12.3	30,182	35,062	-13.9
Indiana	686	675	698	20,266	19,890	1.9	35,225	35,084	0.4
Kansas	6	6	8	224	249	-10.1	394	480	-18.0
Kentucky Total	2,328	2,289	2,175	68,826	66,740	3.1	117,151	116,516	0.5
Eastern	1,757	1,728	1,634	51,315	50,587	1.4	87,649	88,759	-1.3
Western	571	561	541	17,511	16,153	8.4	29,502	27,757	6.3
Louisiana	88	100	96	2,259	1,473	53.4	3,888	3,326	16.9
Maryland	40	40	40	1,295	1,286	0.7	2,301	3,044	-24.4
Mississippi	41	66	67	2,047	2,069	-1.1	3,505	3,605	-2.8
Missouri	4	4	4	131	132	-1.3	234	242	-3.7
Montana	822	808	880	25,557	23,077	10.7	45,630	41,676	9.5
New Mexico	486	478	404	12,605	14,392	-12.4	22,578	25,770	-12.4
North Dakota	553	543	595	16,147	16,658	-3.1	28,976	30,285	-4.3
Ohio	458	450	451	13,908	12,352	12.6	24,032	21,957	9.4
Oklahoma	35	35	32	998	953	4.8	1,687	1,741	-3.1
Pennsylvania Total	1,248	1,228	1,181	38,500	38,385	0.3	65,057	65,557	-0.8
Anthracite	24	23	29	938	898	4.4	1,602	1,548	3.5
Bituminous	1,225	1,204	1,152	37,563	37,487	0.2	63,455	64,008	-0.9
Tennessee	51	50	48	1,487	1,510	-1.6	2,621	2,669	-1.8
Texas	764	751	835	22,851	23,013	-0.7	41,554	43,029	-3.4
Utah	464	456	405	14,447	13,898	4.0	24,769	24,842	-0.3
Virginia	469	462	441	13,459	15,944	-15.6	22,879	28,361	-19.3
Washington	--	--	--	--	--	--	0	894	-100.0
West Virginia Total	3,075	3,023	2,908	90,793	89,002	2.0	154,674	151,972	1.8
Northern	798	784	779	24,926	25,089	-0.7	41,886	41,804	0.2
Southern	2,277	2,239	2,129	65,867	63,913	3.1	112,787	110,169	2.4
Wyoming	9,174	9,091	9,066	255,058	251,046	1.6	455,069	445,495	2.1
Appalachian Total	7,477	7,352	7,069	222,758	220,170	1.2	379,558	381,124	-0.4
Interior Total	2,781	2,773	2,868	84,482	84,678	-0.2	146,247	150,383	-2.8
Western Total	12,472	12,334	12,235	349,447	345,127	1.3	622,067	615,555	1.1
East of Miss. River	9,359	9,229	8,960	280,739	278,985	0.6	477,971	482,632	-1.0
West of Miss. River	13,371	13,231	13,212	375,948	370,990	1.3	669,901	664,430	0.8
Bituminous and Lignite	22,707	22,437	22,143	655,749	649,077	1.0	1,146,270	1,145,514	0.1
Anthracite	24	23	29	938	898	4.4	1,602	1,548	3.5
U.S. Total	22,730	22,460	22,172	656,687	649,975	1.0	1,147,873	1,147,063	0.1
Railroad Cars Loaded	150,766	148,208	146,188	4,332,163	4,207,105	3.0	7,529,090	7,387,839	1.9

Source: Energy Information Administration



Volume 76 No. 30

OUTPUT FOR WEEK ENDED - Jul 26, 2008

Jul 30, 2008

The net available amount of electric energy distributed by the Total Electric Utility Industry+ for the week ended Saturday, Jul 26, 2008 was 91,262 gigawatthours (GWh), according to the Edison Electric Institute. This is equivalent to 176 on the weekly electric output index.

WEEKLY ELECTRIC OUTPUT BY GEOGRAPHIC DIVISION
(48 CONTIGUOUS STATES)

	Week Ended July 26		52 Weeks Ended July 26	
	GWh Output	% Increase Over Corresponding Week of 2007	GWh Output	% Increase Over Corresponding Period of 2007
New England	2,953	1.1	133,524	1.0
Mid-Atlantic	10,646	8.0	457,527	1.6
Central Industrial	15,746	9.3	720,405	1.7
West Central	7,649	-4.9	349,353	0.7
Southeast	24,280	6.9	1,111,589	2.4
South Central	14,808	12.8	612,907	3.4
Rocky Mountain	6,360	3.9	276,966	3.7
Pacific Northwest	2,867	-5.4	166,764	6.8
Pacific Southwest	5,953	-7.1	289,481	-0.5
Total United States	91,262	5.3	4,118,516	2.2

WEEKLY ELECTRIC OUTPUT IN PREVIOUS WEEKS--GWh

Week Ended	2008	Week Ended	2007	% Inc. (08/07)	52 Weeks Ended	2008	% Inc. (08/07)
Jul 05	82,135	Jul 07	81,057	1.3	Jul 05	4,112,111	1.6
Jul 12	88,047	Jul 14	88,617	-0.6	Jul 12	4,111,541	1.7
Jul 19	90,310	Jul 21	87,961	2.7	Jul 19	4,113,890	1.9
Jul 26	91,262	Jul 28	86,636	5.3	Jul 26	4,118,516	2.2
Jul 26	2,335,845	Jul 28	2,317,941	0.8	YEAR TO DATE, FIRST 30 WEEKS		

WEEKLY ELECTRIC OUTPUT INDEX--TOTAL U.S.*
SEASONALLY ADJUSTED 1982 = 100

Week Ended	2008	Week Ended	2007	Week Ended	2006
Jul 05	177	Jul 07	177	Jul 08	181
Jul 12	181	Jul 14	186	Jul 15	189
Jul 19	174	Jul 21	174	Jul 22	197
Jul 26	176	Jul 28	171	Jul 29	187

* Excludes Alaska and Hawaii.

+ Includes investor-owned companies, cooperatives and government-owned utilities.

Copyright © 2008 Edison Electric Institute. All rights reserved.

WEEKLY ELECTRIC OUTPUT BY GEOGRAPHIC DIVISION (48 CONTIGUOUS STATES)

	Week Ended			NMA CUMULATIVE JANUARY WEEK ONE TO			52 Weeks Ended		
	26-Jul 2008 GWh Output	28-Jul 2007 GWh Output	% Increase Over Corresponding Week of 2007	26-Jul 2008 GWh Output	28-Jul 2007 GWh Output	% Increase Over Corresponding Week of 2007	26-Jul 2008 GWh Output	28-Jul 2007 GWh Output	% Increase Over Corresponding Week of 2007
New England	2,953	2,922	1.1%	76,199	77,121	-1.2%	133,524	132,244	1.0%
Mid-Atlantic	10,646	9,859	8.0%	260,504	261,645	-0.4%	457,527	450,292	1.6%
Central Industrial	15,746	14,406	9.3%	408,570	410,303	-0.4%	720,405	708,026	1.7%
West Central	7,649	8,046	-4.9%	198,628	201,489	-1.4%	349,353	346,836	0.7%
Southeast	24,280	22,713	6.9%	626,968	622,038	0.8%	1,111,589	1,085,248	2.4%
South Central	14,808	13,128	12.8%	351,739	336,968	4.4%	612,907	592,995	3.4%
Rocky Mountain	6,360	6,122	3.9%	151,545	152,007	-0.3%	276,966	267,180	3.7%
Pacific Northwest	2,867	3,031	-5.4%	98,910	91,226	8.4%	166,764	156,181	6.8%
Pacific Southwest	5,953	6,409	-7.1%	162,783	165,143	-1.4%	289,481	290,875	-0.5%
Total United States *	91,262	86,636	5.3%	2,335,846	2,317,940	0.8%	4,118,516	4,029,877	2.2%

Notes: EEI output data are an estimate of electricity load made available for distribution derived as weekly net generation + purchases from non-utilities + net imports - exports - sales for resale. It is not meant to be a measure of electricity generation for the U.S. EEI survey data represent the majority of national distribution (large utilities, large government power projects, some independent and large municipal power projects). The remaining segment of the industry (smaller producers) is estimated. Non-utility generation is captured via direct sales to utilities.

* Excludes Alaska and Hawaii

** Less than one-tenth of one percent

SOURCE: Edison Electric Institute (EEI), *Weekly Electric Output Report*.

AMERICAN IRON AND STEEL INSTITUTE
 1140 Connecticut Avenue, Suite 705
 Washington, D.C. 20036

July 28, 2008

ESTIMATED WEEKLY RAW STEEL * PRODUCTION

Period	Thousand Net Tons	Percent Change from Previous Period	Percent Capacity Utilization**	Production by District		
				Week Ending July 26	Week Ending July 19	
Week Ending				North East Coast	181	175
				Pgh/Youngstown	215	216
				Lake Erie	93	92
				Detroit	108	100
				Indiana/Chicago	504	507
				Midwest	265	271
				Southern	679	661
				Western	97	92
				Total	2,142	2,114
Year-to-Date+						
July 26, 2008	2,142	1.4	89.8			
July 26, 2007	2,059	4.1	87.0			
July 19, 2008	2,114	1.6	88.6			
July 26, 2008	62,842	2.5	88.6			
July 26, 2007	61,353	-	85.9			

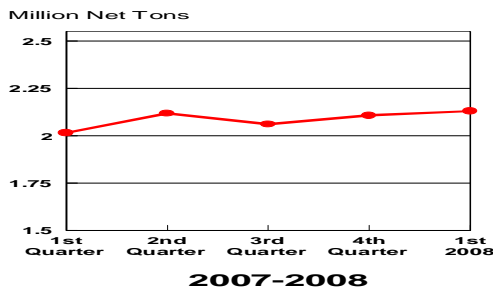
*Raw steel production tonnage included in this report is estimated based on a sampling of steel producers. Therefore, this report should be used primarily to assess production trends. The AISI production report "AIS 7," produced monthly and available by subscription, provides a more accurate summary of steel production based on data supplied by companies representing approximately 75% of U.S. production capacity.

+ Includes revisions for previous months

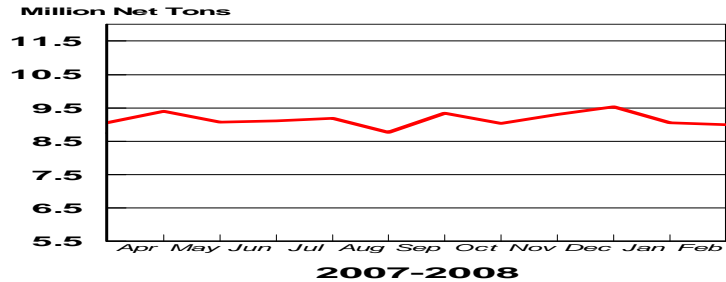
NOTE: Capacity for the Fourth Quarter 2007 is approximately 31.3 million net tons vs 30.7 million net tons for the same period last year, and 30.1 million tons for the third quarter of 2007.

Capacity -	2003 approx.	2.3 million tons/week
	2004	2.2
	2005	2.3
	2006	2.4
	2007	2.4

Average Weekly Raw Steel Production

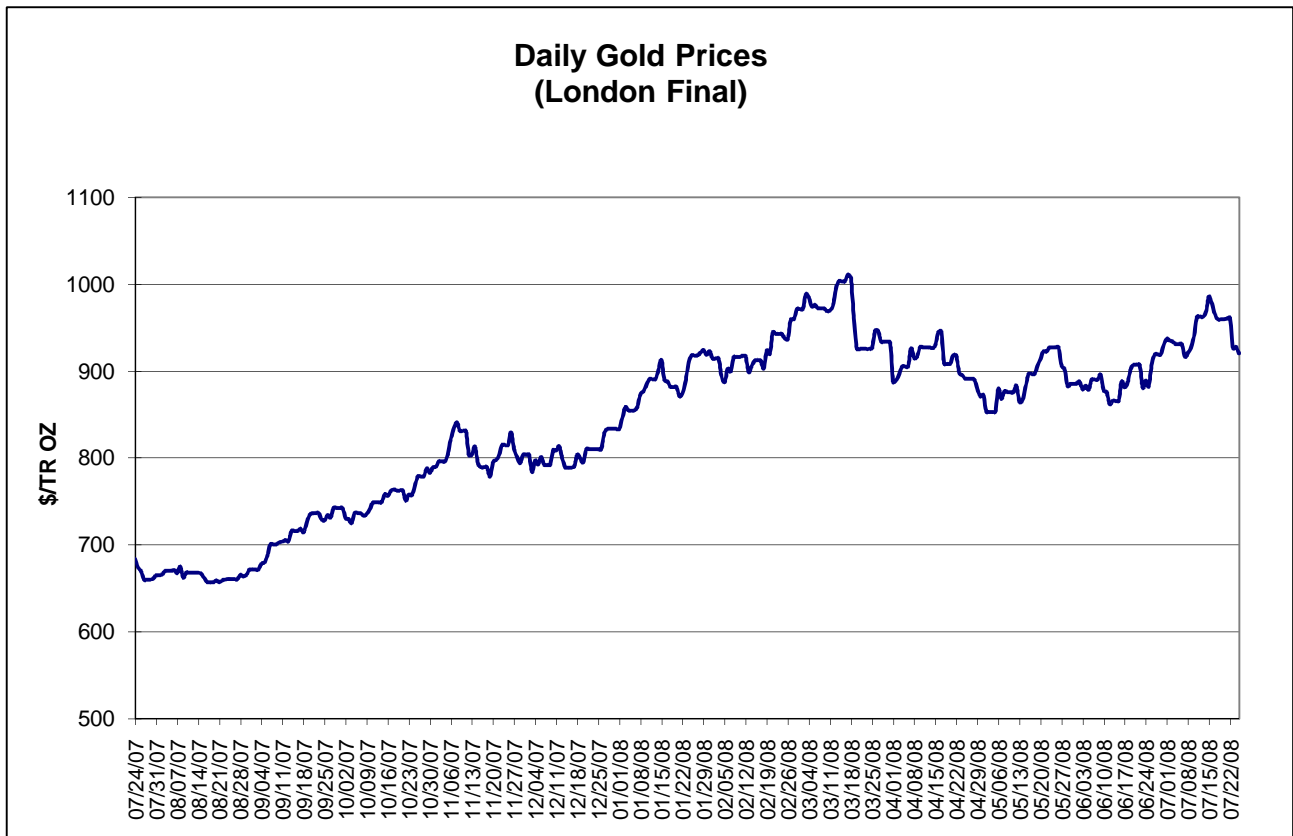
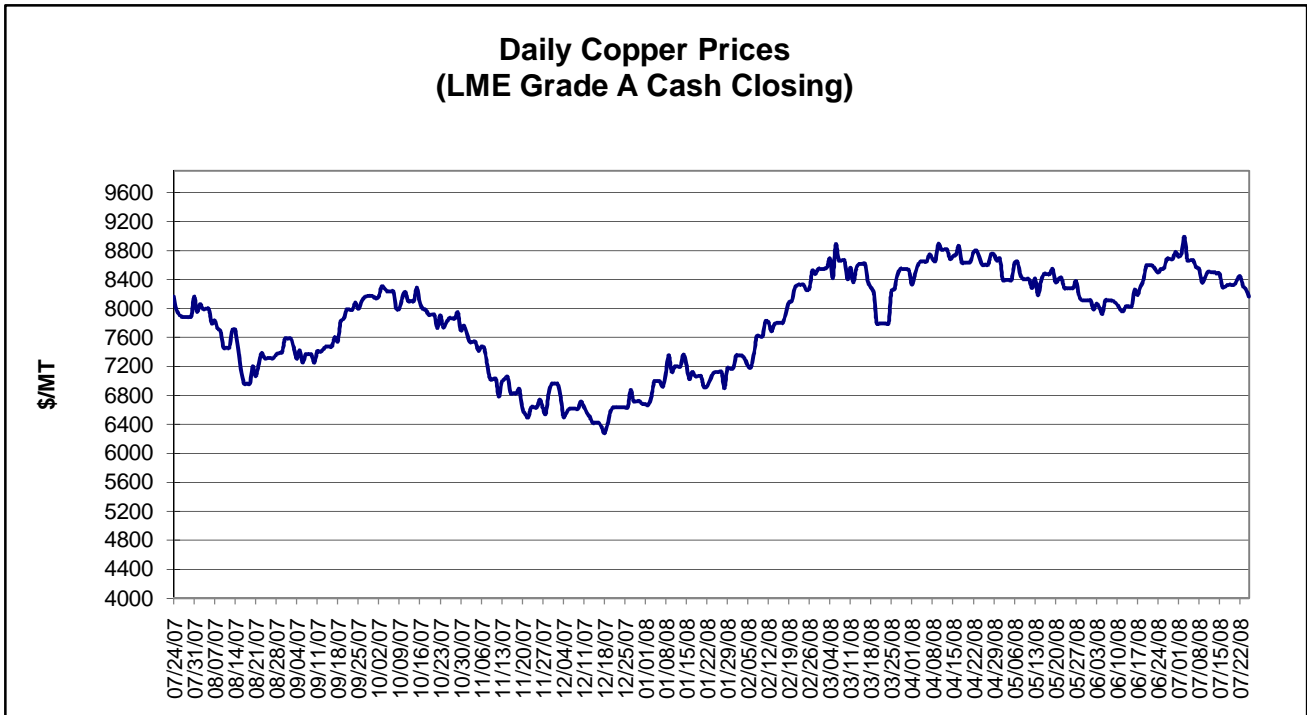


Monthly Raw Steel Production



*Steel in the first solid state after melting suitable for further processing or sale, including ingots, steel for castings and strand or pressure cast blooms, slabs, or other product forms.

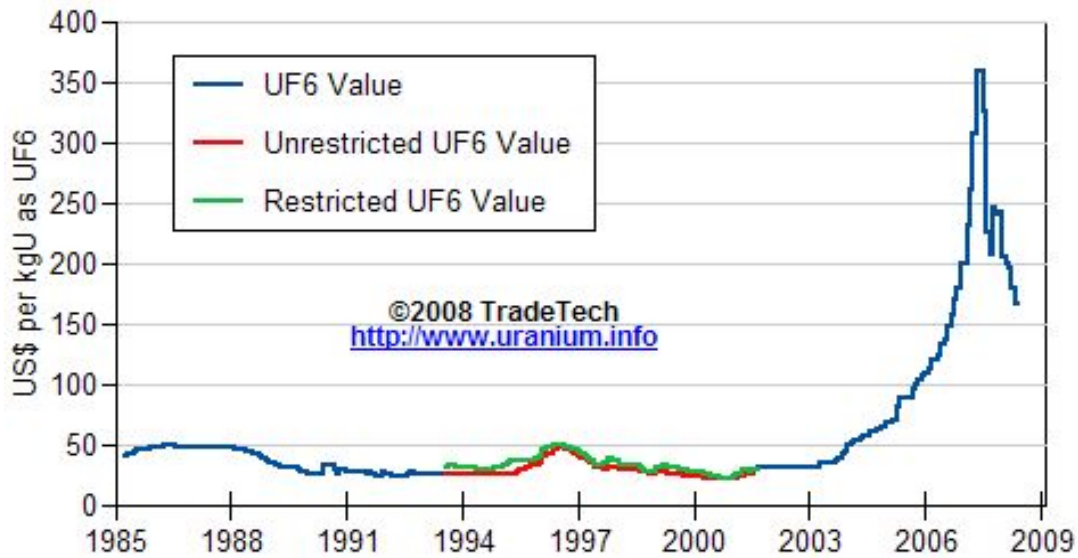
** Based on tonnage capability to produce raw steel for a sustained full order book.



Data reflect closings on weekends and holidays.

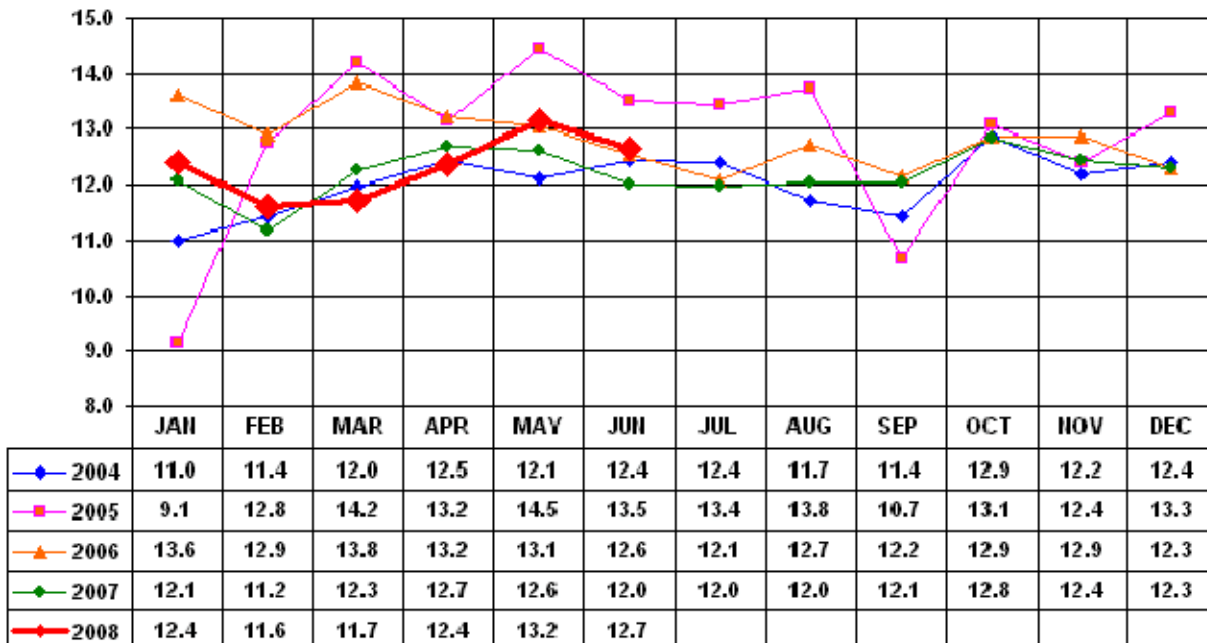
Source: Platts Metals Week

Trade Tech's Uranium (UF6) Monthly Spot Prices (US\$/kg as UF6)



Source: Trade Tech, Uranium Info Website – <http://www.uranium.info>

Coal and Coke Monthly Tonnage Indicator for Internal U.S. Waterways



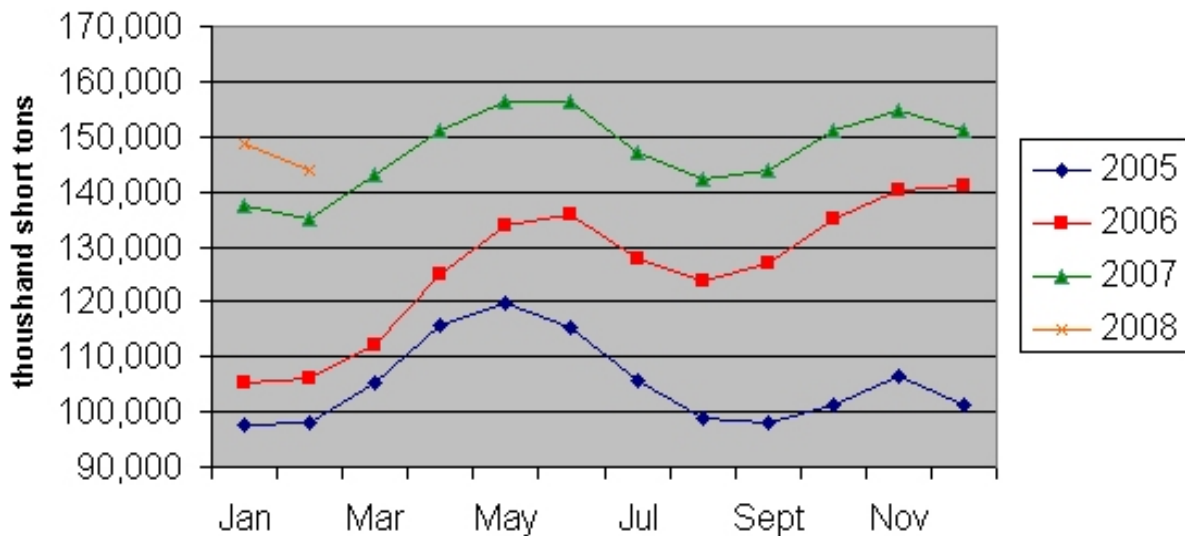
Source: U.S. Army Corps of Engineers, Waterborne Commerce Statistics Center

EIA Weekly Spot Coal Prices

Average Spot Coal Prices (Dollars per Short Ton)					
Week Ended	Central Appalachia 12,500 Btu, 1.2 SO2	Northern Appalachia 13,000 Btu, <3.0 SO2	Illinois Basin 11,800 Btu, 5.0 SO2	Powder River Basin 8,800 Btu, 0.8 SO2	Uinta Basin 11,700 Btu, 0.8 SO2
27-June-08	\$117.60	\$118.00	\$65.00	\$12.75	\$54.00
03-July-08	\$117.60	\$130.00	\$70.00	\$14.00	\$54.00
11-July-08	\$134.55	\$138.00	\$70.00	\$14.00	\$56.00
18-July-08	\$139.30	\$138.00	\$70.00	\$14.00	\$56.00
25-July-08	\$140.00	\$149.00	\$71.00	\$12.50	\$62.00

Source: Energy Information Administration (from *Platts Coal Outlook*, "Weekly Price Survey")

EIA Electric Power Sector Coal Stocks



Source: Energy Information Administration

USGS Production of Selected Mineral Commodities	2008 First Quarter	2007 First Quarter	Percent Change
Aluminum, secondary (000 Mt.)	240.0	243.0	-1%
Cement (Mil. Mt.)	17.2	18.0	-4%
Gypsum (Mil. Mt.) *	4.7	5.4	-13%
Iron Ore (Mil. Mt.)	12.9	11.4	13%
Phosphate rock (Mil. Mt.)	7.6	7.1	7%
Sand & gravel, construction (Mil. Mt.)	184.0	194.0	-5%
Soda ash (Mil. Mt.)	2.8	2.7	4%
Stone, crushed (Mil. Mt.)	280.0	263.0	6%
Zinc (000 Mt.)	207.0	181.0	14%

Source: U.S. Geological Survey, Mineral Industry Surveys, *U.S. Production of Selected Mineral Commodities in the First Quarter 2008*

* Revised June 16, 2008. Note - data are preliminary.