
National Mining Association

Weekly Statistical Summary

August 10, 2007 Edition
(Data for Week Ending August 4, 2007)

Prepared by
National Mining Association



Suite 500 East, 101 Constitution Avenue, NW
Washington, DC, 20001
Phone (202) 463-2600
Visit us at <http://www.nma.org>

NMA Weekly Statistical Summary

Vol. 45, No. 31
Dated 08/10/07

PRODUCTION, CONSUMPTION & TRADE						
	Week Ended			Cumulative Jan 1 to		
	08/04/07	08/05/06	% Chng	08/04/07	08/05/06	% Chng
EIA Coal Production (000 Tons):						
Week Ended/Year to Date	22,501	22,057	2.0%	675,030	691,446	-2.4%
52 Weeks Ended	1,143,351	1,148,056	-0.4%			
Month Ended -- July						
	July 07/06		% Chng	Jan - July 07/06		% Chng
	93,684	94,985	-1.4%	661,873	676,484	-2.2%
MONTH ENDED AND CUMULATIVE NUMBERS ARE PRELIMINARY AND SUBJECT TO CHANGE						
DOC Bituminous Coal Trade (000 Tons)						
Exports:	May 07/06			Jan - May 07/06		
			% Chng			% Chng
Metallurgical	2,626	2,613	0.5%	11,749	11,225	4.7%
Steam	2,086	2,158	-3.3%	8,798	7,489	17.5%
Imports:	2,691	2,742	-1.9%	14,164	14,729	-3.8%
Week Ended						
	08/04/07	08/05/06	% Chng	Cumulative Jan 1 to		
				08/04/07	08/05/06	% Chng
EEl Electric Output (Mil. Kwh)	93,540	98,583	-5.1%	2,411,482	2,375,516	1.5%
AISI Raw Steel Output (000 Tons)	2,058	2,086	-1.3%	62,691	66,545	-5.8%
EIA U.S. PETROLEUM DATA						
4-Week Averages 000 Barrels per Day						
Week Ending						
	08/03/07	08/03/06	% Chng	Cumulative Daily Averages		
				2007	2006	% Chng
PETROLEUM SUPPLY:						
Domestic Crude	5,183	5,170	0.3	5,185	5,096	1.7
Net Imports (Incl. SPR)	10,206	10,167	0.4	10,098	10,021	0.8
SPR Stocks W/D or Added	0	0	--	-8	-15	--
Other Stocks W/D or added	435	156	--	-171	-34	--
Natural Gas Liquids Prod.	2,413	2,428	-0.6	2,372	2,185	8.6



NMA
THE AMERICAN RESOURCE

National Mining Association Web Site: [http:// www.nma.org](http://www.nma.org)

EIA Estimated Weekly U.S. Coal Production Overview (Thousand Short Tons)

Coal-Producing Region and State	Week Ended			Year to Date			52 Weeks Ended		
	8/4/2007	7/28/2007	8/5/2006	8/4/2007	8/4/2006	Percent Change	8/4/2007	8/5/2006	Percent Change
Alabama	395	390	345	12,051	11,738	2.7	19,333	19,709	-1.9
Alaska	27	27	24	923	840	9.9	1,508	1,288	17.1
Arizona	152	150	163	4,690	4,830	-2.9	8,076	9,435	-14.4
Arkansas	1	1	1	29	10	182.4	41	12	259.8
Colorado	755	745	718	21,127	20,809	1.5	36,565	35,860	2.0
Illinois	637	629	644	20,659	19,118	8.1	33,706	31,305	7.7
Indiana	702	693	677	21,278	21,121	0.7	35,876	35,114	2.2
Kansas	9	9	9	262	205	27.6	483	275	75.6
Kentucky Total	2,286	2,256	2,251	69,372	73,626	-5.8	116,028	121,498	-4.5
Eastern	1,715	1,693	1,745	51,901	57,353	-9.5	87,583	94,442	-7.3
Western	571	563	506	17,471	16,273	7.4	28,446	27,056	5.1
Louisiana	61	104	76	1,746	2,355	-25.8	3,498	4,066	-14.0
Maryland	102	101	118	2,381	3,421	-30.4	4,013	5,419	-26.0
Mississippi	84	67	55	2,198	2,328	-5.6	3,662	3,793	-3.5
Missouri	6	6	4	163	288	-43.7	268	549	-51.1
Montana	796	786	819	23,917	24,184	-1.1	41,458	40,918	1.3
New Mexico	497	490	481	14,161	15,091	-6.2	24,972	27,101	-7.9
North Dakota	519	512	607	16,802	17,511	-4.1	29,702	30,115	-1.4
Ohio	472	466	428	13,833	13,630	1.5	22,911	23,664	-3.2
Oklahoma	40	39	36	1,108	1,252	-11.5	1,854	2,012	-7.8
Pennsylvania Total	1,210	1,194	1,176	38,560	40,369	-4.5	64,259	67,801	-5.2
Anthracite	27	27	30	877	903	-2.9	1,487	1,611	-7.7
Bituminous	1,183	1,167	1,146	37,684	39,466	-4.5	62,772	66,191	-5.2
Tennessee	56	55	54	1,683	1,708	-1.5	2,778	2,980	-6.8
Texas	907	895	945	25,683	26,586	-3.4	44,522	46,092	-3.4
Utah	459	453	445	14,104	15,595	-9.6	24,516	25,486	-3.8
Virginia	568	561	563	17,149	18,095	-5.2	28,901	29,041	-0.5
Washington	0	0	52	0	1,738	-100.0	842	3,745	-77.5
West Virginia Total	2,920	2,882	2,810	91,152	92,735	-1.7	150,198	153,734	-2.3
Northern	904	893	752	27,765	26,639	4.2	43,797	43,869	-0.2
Southern	2,016	1,990	2,058	63,387	66,097	-4.1	106,400	109,865	-3.2
Wyoming	8,841	8,826	8,555	259,999	262,262	-0.9	443,382	427,047	3.8
Appalachian Total	7,438	7,342	7,240	228,711	239,049	-4.3	379,975	396,790	-4.2
Interior Total	3,017	3,006	2,953	90,597	89,538	1.2	152,355	150,272	1.4
Western Total	12,046	11,989	11,865	355,722	362,859	-2.0	611,021	600,993	1.7
East of Miss. River	9,432	9,294	9,121	290,317	297,890	-2.5	481,664	494,058	-2.5
West of Miss. River	13,069	13,043	12,936	384,712	393,556	-2.2	661,687	653,998	1.2
Bituminous and Lignite	22,474	22,310	22,027	674,153	690,543	-2.4	1,141,863	1,146,445	-0.4
Anthracite	27	27	30	877	903	-2.9	1,487	1,611	-7.7
U.S. Total	22,501	22,337	22,057	675,030	691,446	-2.4	1,143,351	1,148,056	-0.4
Railroad Cars Loaded	146,905	146,188	142,335	4,354,010	4,416,958	-1.4	7,392,409	7,309,069	1.1

Source: Energy Information Administration

EIA Estimated Monthly U.S. Coal Production Overview (Thousand Short Tons)

Coal-Producing Region and State	Week Ended		Year to Date		Month Ended		January - July		Percent Change
	8/4/2007	8/5/2006	8/4/2007	8/4/2006	July 2007	July 2006	2007	2006	
Alabama	395	345	12,051	11,738	1,629	1,424	11,814	11,465	3.0
Alaska	27	24	923	840	111	100	907	820	10.5
Arizona	152	163	4,690	4,830	627	665	4,598	4,700	-2.2
Arkansas	1	s	29	10	3	2	29	10	188.2
Colorado	755	718	21,127	20,809	3,127	3,080	20,690	20,355	1.6
Illinois	637	644	20,659	19,118	2,630	2,695	20,282	18,645	8.8
Indiana	702	677	21,278	21,121	2,899	2,824	20,862	20,616	1.2
Kansas	9	9	262	205	37	38	257	198	29.7
Kentucky Total	2,286	2,251	69,372	73,626	9,432	9,353	68,012	71,907	-5.4
Eastern	1,715	1,745	51,901	57,353	7,075	7,231	50,877	56,002	-9.2
Western	571	506	17,471	16,273	2,357	2,122	17,134	15,905	7.7
Louisiana	61	76	1,746	2,355	397	395	1,711	2,306	-25.8
Maryland	102	118	2,381	3,421	422	488	2,320	3,329	-30.3
Mississippi	84	55	2,198	2,328	336	366	2,150	2,293	-6.3
Missouri	6	4	163	288	25	14	159	286	-44.3
Montana	796	819	23,917	24,184	3,300	3,531	23,459	23,686	-1.0
New Mexico	497	481	14,161	15,091	2,050	1,995	13,865	14,722	-5.8
North Dakota	519	607	16,802	17,511	2,140	2,502	16,490	17,025	-3.1
Ohio	472	428	13,833	13,630	1,948	1,789	13,553	13,311	1.8
Oklahoma	40	36	1,108	1,252	164	149	1,084	1,223	-11.4
Pennsylvania Total	1,210	1,176	38,560	40,369	4,990	4,877	37,838	39,458	-4.1
Anthracite	27	30	877	903	112	124	860	879	-2.2
Bituminous	1,183	1,146	37,684	39,466	4,878	4,753	36,978	38,579	-4.1
Tennessee	56	54	1,683	1,708	229	222	1,649	1,665	-1.0
Texas	907	945	25,683	26,586	3,763	4,089	25,162	26,026	-3.3
Utah	459	445	14,104	15,595	1,895	1,852	13,831	15,255	-9.3
Virginia	568	563	17,149	18,095	2,345	2,353	16,813	17,677	-4.9
Washington	0	52	0	1,738	0	215	0	1,696	-100.0
West Virginia Total	2,920	2,810	91,152	92,735	12,056	11,727	89,419	90,636	-1.3
Northern	904	752	27,765	26,639	3,732	3,134	27,227	26,071	4.4
Southern	2,016	2,058	63,387	66,097	8,323	8,593	62,192	64,565	-3.7
Wyoming	8,841	8,555	259,999	262,262	37,130	38,239	254,921	257,174	-0.9
Appalachian Total	7,438	7,240	228,711	239,049	30,695	30,111	224,284	233,543	-4.0
Interior Total	3,017	2,953	90,597	89,538	12,609	12,694	88,828	87,507	1.5
Western Total	12,046	11,865	355,722	362,859	50,380	52,180	348,761	355,433	-1.9
East of Miss. River	9,432	9,121	290,317	297,890	38,917	38,117	284,711	291,002	-2.2
West of Miss. River	13,069	12,936	384,712	393,556	54,767	56,868	377,162	385,482	-2.2
Bituminous and Lignite	22,474	22,027	674,153	690,543	93,572	94,861	661,013	675,605	-2.2
Anthracite	27	30	877	903	112	124	860	879	-2.2
U.S. Total	22,501	22,057	675,030	691,446	93,684	94,985	661,873	676,484	-2.2
Railroad Cars Loaded	146,905	142,335	4,354,010	4,416,958	--	--	--	--	--

Energy Information Administration



Volume 75 No. 31

OUTPUT FOR WEEK ENDED - Aug 04, 2007

Aug 08, 2007

The net available amount of electric energy distributed by the Total Electric Utility Industry+ for the week ended Saturday, **Aug 04, 2007** was **93,540** gigawatthours (GWh), according to the Edison Electric Institute. This is equivalent to **183** on the weekly electric output index.

WEEKLY ELECTRIC OUTPUT BY GEOGRAPHIC DIVISION
(48 CONTIGUOUS STATES)

	Week Ended August 04		52 Weeks Ended August 04	
	GWh Output	% Increase Over Corresponding Week of 2006	GWh Output	% Increase Over Corresponding Period of 2006
New England	3,248	-3.2	132,135	-2.0
Mid-Atlantic	11,021	-9.4	449,149	-0.7
Central Industrial	16,608	-7.7	706,634	0.3
West Central	8,438	-3.6	346,521	-0.1
Southeast	24,654	-7.4	1,083,266	0.3
South Central	13,796	-8.3	591,747	-1.1
Rocky Mountain	6,418	10.3	267,781	3.8
Pacific Northwest	2,820	8.4	156,400	3.6
Pacific Southwest	6,537	5.2	291,200	-0.6
Total United States	93,540	-5.1	4,024,833	0.2

WEEKLY ELECTRIC OUTPUT IN PREVIOUS WEEKS--GWh

Week Ended	2007	Week Ended	2006	% Inc. (07/06)	52 Weeks Ended	2007	% Inc. (07/06)
Jul 14	88,617	Jul 15	89,508	-1.0	Jul 14	4,044,694	0.8
Jul 21	87,961	Jul 22	96,314	-8.7	Jul 21	4,036,342	0.6
Jul 28	86,636	Jul 29	93,102	-6.9	Jul 28	4,029,876	0.4
Aug 04	93,540	Aug 05	98,583	-5.1	Aug 04	4,024,833	0.2
Aug 04	2,411,482	Aug 05	2,375,516	1.5	YEAR TO DATE, FIRST 31 WEEKS		

WEEKLY ELECTRIC OUTPUT INDEX--TOTAL U.S.*
SEASONALLY ADJUSTED 1982 = 100

Week Ended	2007	Week Ended	2006	Week Ended	2005
Jul 14	186	Jul 15	189	Jul 16	178
Jul 21	174	Jul 22	197	Jul 23	187
Jul 28	171	Jul 29	187	Jul 30	181
Aug 04	183	Aug 05	198	Aug 06	182

* Excludes Alaska and Hawaii

+ Includes investor-owned companies, cooperatives and government-owned utilities.

Copyright © 2007 Edison Electric Institute. All rights reserved.

WEEKLY ELECTRIC OUTPUT BY GEOGRAPHIC DIVISION (48 CONTIGUOUS STATES)

	Week Ended			NMA CUMULATIVE JANUARY 1 to			52 Weeks Ended		
	4-Aug	5-Aug	% Increase Over Corresponding Week of 2006	4-Aug	5-Aug	% Increase Over Corresponding Week of 2006	4-Aug	5-Aug	% Increase Over Corresponding Week of 2006
	2007	2006		2007	2006		2007	2006	
	GWh Output	GWh Output		GWh Output	GWh Output		GWh Output	GWh Output	
New England	3,248	3,357	-3.2%	80,369	80,058	0.4%	132,135	134,894	-2.0%
Mid-Atlantic	11,021	12,163	-9.4%	272,666	267,266	2.0%	449,149	452,239	-0.7%
Central Industrial	16,608	18,000	-7.7%	426,911	415,164	2.8%	706,634	704,411	0.3%
West Central	8,438	8,753	-3.6%	209,927	207,555	1.1%	346,521	346,735	-0.1%
Southeast	24,654	26,636	-7.4%	646,692	635,516	1.8%	1,083,266	1,079,804	0.3%
South Central	13,796	15,043	-8.3%	350,764	357,388	-1.9%	591,747	598,182	-1.1%
Rocky Mountain	6,418	5,818	10.3%	158,425	151,268	4.7%	267,781	257,959	3.8%
Pacific Northwest	2,820	2,601	8.4%	94,046	89,021	5.6%	156,400	151,001	3.6%
Pacific Southwest	<u>6,537</u>	<u>6,212</u>	5.2%	<u>171,680</u>	<u>172,283</u>	-0.4%	<u>291,200</u>	<u>292,978</u>	-0.6%
Total United States *	93,540	98,583	-5.1%	2,411,480	2,375,519	1.5%	4,024,833	4,018,203	0.2%

Notes: EEI output data are an estimate of electricity load made available for distribution derived as weekly net generation + purchases from non-utilities + net imports - exports - sales for resale. It is not meant to be a measure of electricity generation for the U.S. EEI survey data represent the majority of national distribution (large utilities, large government power projects, some independent and large municipal power projects). The remaining segment of the industry (smaller producers) is estimated. Non-utility generation is captured via direct sales to utilities.

* Excludes Alaska and Hawaii

** Less than one-tenth of one percent

SOURCE: Edison Electric Institute (EEI), *Weekly Electric Output Report*.

AMERICAN IRON AND STEEL INSTITUTE
 1140 Connecticut Avenue, Suite 705
 Washington, D.C. 20036

August 6, 2007

ESTIMATED WEEKLY RAW STEEL* PRODUCTION

<u>Period</u>	Thousand <u>Net Tons</u>	Percent Change from Previous <u>Period</u>	Percent Capability <u>Utilization**</u>	<u>Production by District</u>		
				<u>Week Ending</u>		
				<u>Aug 4</u>	<u>Jul 28</u>	
<u>Week Ending</u>						
				North East Coast	149	148
				Pgh/Youngstown	209	207
				Lake Erie	107	112
				Detroit	115	106
				Indiana/Chicago	520	505
				Midwest	253	253
				Southern	618	662
				Western	<u>87</u>	<u>85</u>
				Total	2058	2078
<u>Year-to-Date+</u>						
Aug 4, 2007	2,058	-0.9	87.0			
Aug 4, 2006	2,086	-1.3	88.7			
July 28, 2007	2,078	-1.8	87.8			
Aug 4, 2007	62,691	-5.7	85.0			
Aug 4, 2006	66,545	-	90.0			

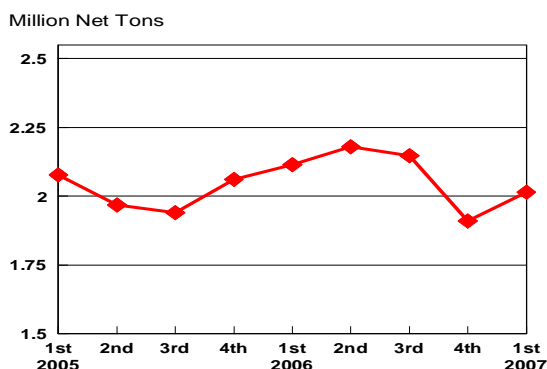
*Raw steel production tonnage included in this report is estimated based on a sampling of steel producers. Therefore, this report should be used primarily to assess production trends. The AISI production report "AIS 7," produced monthly and available by subscription, provides a more accurate summary of steel production based on data supplied by companies representing approximately 75% of U.S. production capacity.

+Includes revisions for previous months

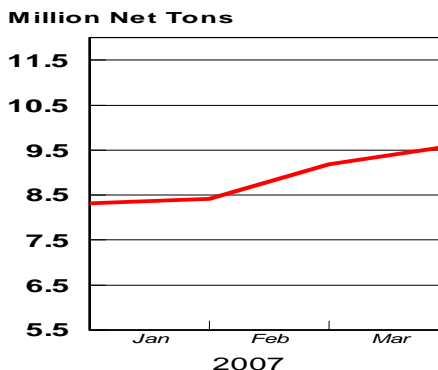
NOTE: Capability for the First Quarter 2007 is approximately 31.2 million net tons vs 30.5 million net tons for the same period last year, and 30.7 million tons for the fourth quarter of 2006.

Capability -	2003 approx.	2.3 million tons/week
	2004	2.2
	2005	2.3
	2006	2.4
	2007	2.4

Average Weekly Raw Steel Production

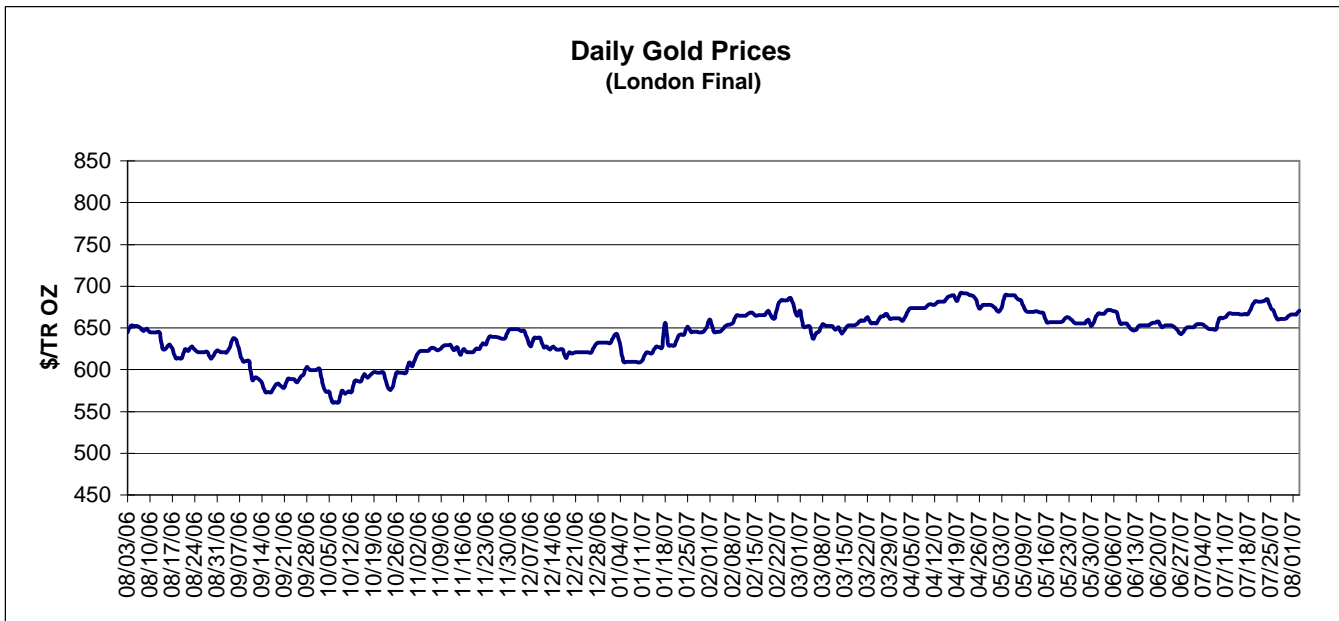
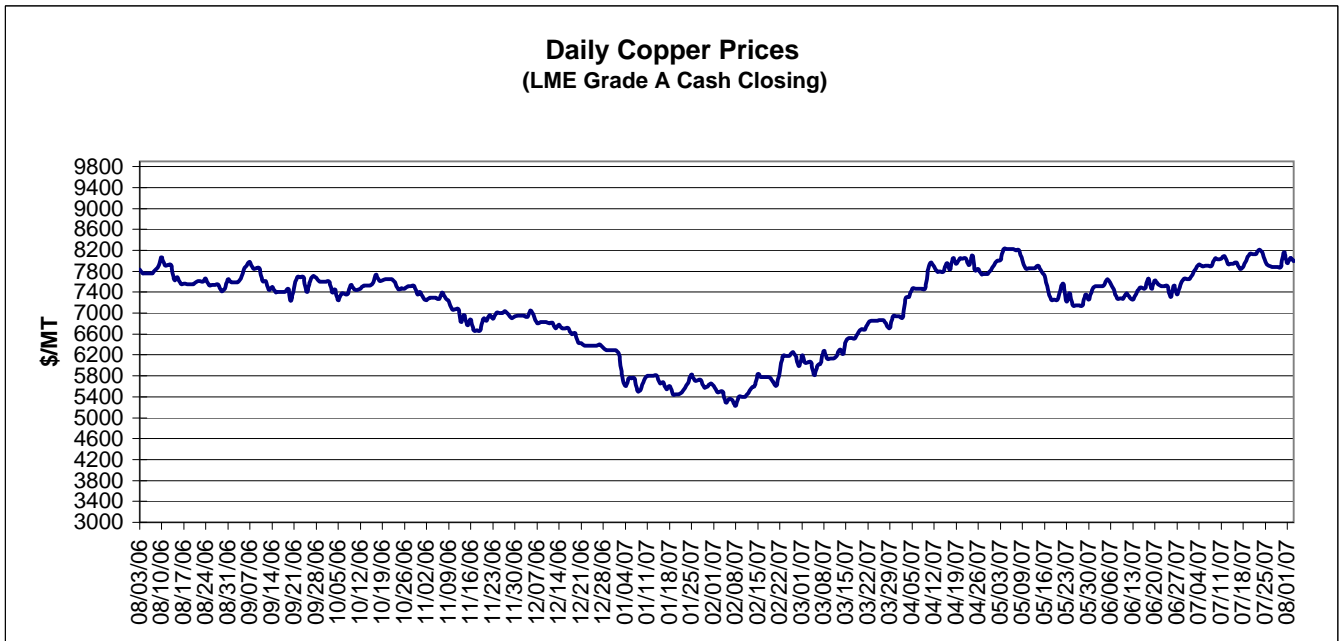


MONTHLY RAW STEEL PRODUCTION



*Steel in the first solid state after melting suitable for further processing or sale, including ingots, steel for castings and strand or pressure cast blooms, slabs, or other product forms.

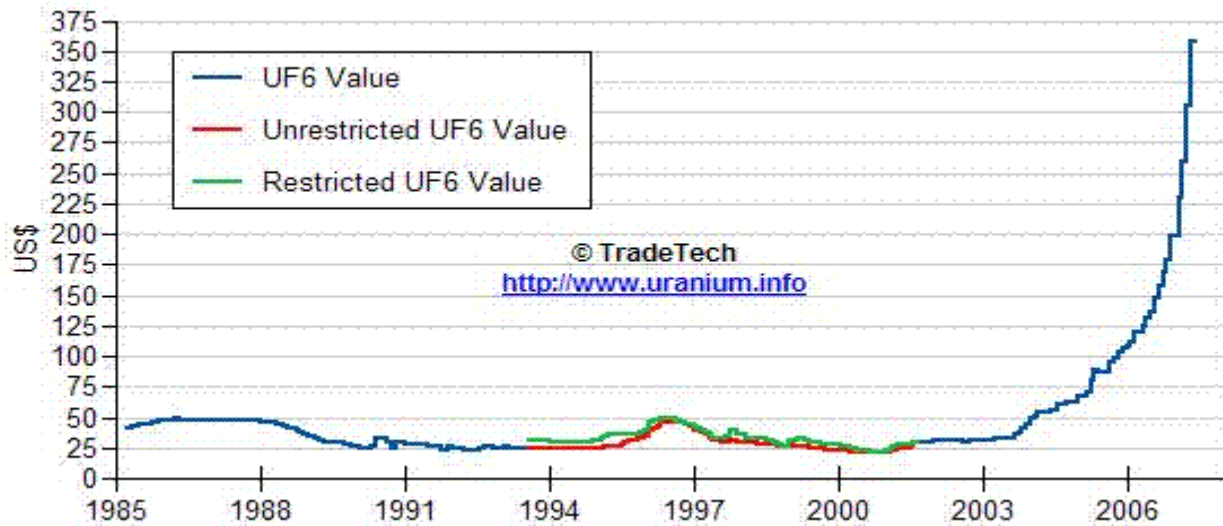
** Based on tonnage capability to produce raw steel for a sustained full order book.



Data reflect closings on weekends and holidays.

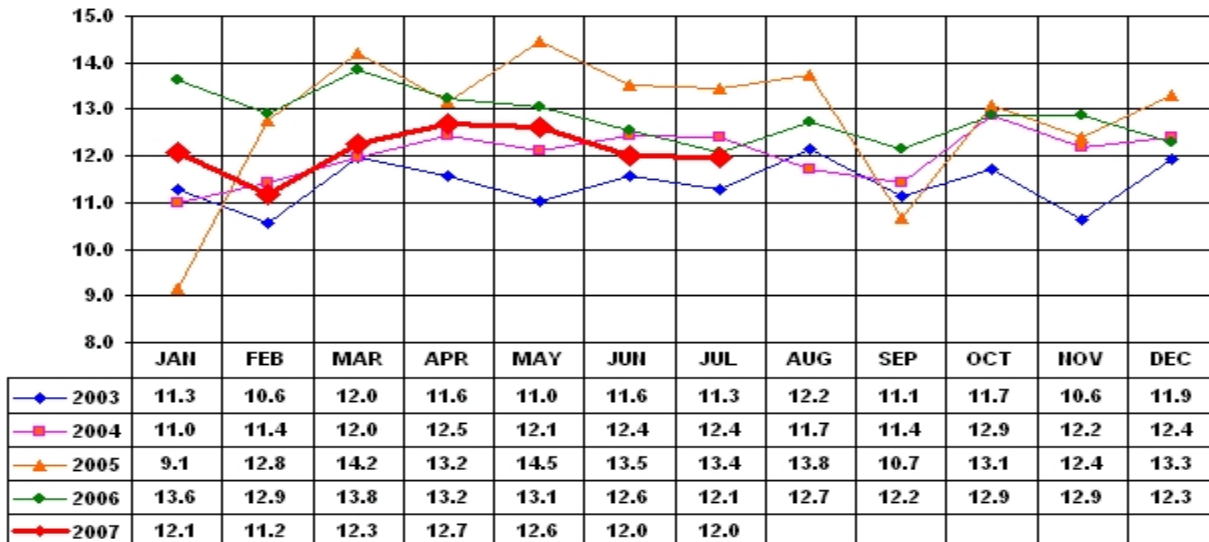
Source: Platts Metals Week

Trade Tech's Uranium (UF6) Monthly Spot Prices (US\$/kg as UF6)



Source: Trade Tech, Uranium Info Website – <http://www.uranium.info>

Coal and Coke Monthly Tonnage Indicator for Internal U.S. Waterways



Source: U.S. Army Corps of engineers, Waterborne Commerce Statistics Center