
National Mining Association

Weekly Statistical Summary

August 15, 2008 Edition
(Data for Week Ending August 9, 2008)

Prepared by
National Mining Association



Suite 500 East, 101 Constitution Avenue, NW
Washington, DC, 20001
Phone (202) 463-2600
Visit us at <http://www.nma.org>

NMA Weekly Statistical Summary

Vol. 46, No. 32
Dated 08/15/08

PRODUCTION, CONSUMPTION & TRADE						
	Week Ended			* Cumulative Jan 1 to		
	08/09/08	08/11/07	% Chng	08/09/08	08/09/07	% Chng
EIA Coal Production (000 Tons):						
Week Ended/Year to Date	22,853	22,104	3.4%	702,717	694,428	1.2%
52 Weeks Ended	1,149,464	1,147,201	0.2%			
* Due to leap year, 2008 cumulative reflects one extra day of tonnage.						
	July 08/07		% Chng	Jan - July 08/07		% Chng
Month Ended -- July	98,578	93,003	6.0%	674,159	664,731	1.4%
MONTH ENDED AND CUMULATIVE NUMBERS ARE PRELIMINARY AND SUBJECT TO CHANGE						
DOC Bituminous Coal Trade (000 Tons)						
	May 08/07		% Chng	Jan - May 08/07		% Chng
Exports:						
Metallurgical	4,842	2,626	84.4%	18,243	11,749	55.3%
Steam	3,492	2,086	67.4%	13,713	8,798	55.9%
Imports:	2,702	2,691	0.4%	13,328	14,164	-5.9%
	Week Ended			* Cumulative Jan 1 to		
	08/09/08	08/11/07	% Chng	08/09/08	08/11/07	% Chng
EEl Electric Output (Mil. Kwh)	91,266	96,955	-5.9%	2,520,258	2,508,436	0.5%
AISI Raw Steel Output (000 Tons)	2,142	2,075	3.2%	67,097	65,487	2.5%
EIA U.S. PETROLEUM DATA						
4-Week Averages						
000 Barrels per Day						
	Week Ending			Cumulative Daily Averages		
	08/08/08	08/08/07	% Chng	2008	2007	% Chng
PETROLEUM SUPPLY:						
Domestic Crude	5,159	5,045	2.3	5,131	5,116	0.3
Net Imports (Incl. SPR)	9,888	9,984	-1.0	9,816	9,997	-1.8
SPR Stocks W/D or Added	-41	0	--	-47	-8	--
Other Stocks W/D or added	12	533	--	-35	-95	--
Natural Gas Liquids Prod.	2,313	2,467	-6.2	2,238	2,367	-5.4



NMA

THE AMERICAN RESOURCE National Mining Association Web Site: [http:// www.nma.org](http://www.nma.org)

EIA Estimated Weekly U.S. Coal Production Overview (Thousand Short Tons)

Coal-Producing Region and State	Week Ended			Year to Date			52 Weeks Ended		
	8/9/2008	8/2/2008	8/11/2007	8/9/2008	8/9/2007	Percent Change	8/9/2008	8/11/2007	Percent Change
Alabama	382	386	363	12,768	11,838	7.9	20,378	18,844	8.1
Alaska	27	28	13	887	870	2.0	1,338	1,433	-6.6
Arizona	156	157	158	4,388	4,947	-11.3	7,392	8,198	-9.8
Arkansas	1	1	2	41	47	-14.2	76	60	26.4
Colorado	801	810	709	22,337	22,020	1.4	36,515	36,915	-1.1
Illinois	591	597	580	19,346	21,875	-11.6	30,197	34,937	-13.6
Indiana	693	700	693	21,659	21,292	1.7	35,218	35,144	0.2
Kansas	6	6	7	236	264	-10.6	391	477	-18.0
Kentucky Total	2,352	2,376	2,159	73,555	71,106	3.4	117,517	116,322	1.0
Eastern	1,775	1,794	1,622	54,884	53,867	1.9	87,941	88,500	-0.6
Western	577	583	537	18,670	17,239	8.3	29,576	27,823	6.3
Louisiana	84	90	83	2,433	1,616	50.6	3,922	3,309	18.5
Maryland	41	41	40	1,377	1,367	0.7	2,303	2,887	-20.2
Mississippi	69	73	80	2,189	2,229	-1.8	3,484	3,659	-4.8
Missouri	4	4	4	139	141	-1.5	233	244	-4.4
Montana	830	839	873	27,226	24,843	9.6	45,535	41,790	9.0
New Mexico	491	496	401	13,591	15,202	-10.6	22,755	25,612	-11.2
North Dakota	558	564	590	17,270	17,852	-3.3	28,905	30,255	-4.5
Ohio	462	467	447	14,837	13,257	11.9	24,057	21,999	9.4
Oklahoma	36	36	31	1,070	1,016	5.3	1,695	1,732	-2.1
Pennsylvania Total	1,261	1,274	1,172	41,036	40,756	0.7	65,224	65,554	-0.5
Anthracite	24	24	28	985	956	3.1	1,593	1,545	3.1
Bituminous	1,237	1,250	1,144	40,050	39,800	0.6	63,631	64,009	-0.6
Tennessee	52	52	47	1,591	1,606	-0.9	2,630	2,657	-1.0
Texas	772	780	829	24,402	24,690	-1.2	41,430	42,801	-3.2
Utah	469	474	402	15,389	14,710	4.6	24,899	24,757	0.6
Virginia	474	479	438	14,413	16,830	-14.4	22,948	28,112	-18.4
Washington	--	--	--	--	--	--	0	789	-100.0
West Virginia Total	3,106	3,139	2,885	97,038	94,839	2.3	155,087	152,142	1.9
Northern	806	814	773	26,546	26,653	-0.4	41,944	41,879	0.2
Southern	2,300	2,324	2,112	70,492	68,186	3.4	113,143	110,263	2.6
Wyoming	9,135	9,308	9,097	273,501	269,215	1.6	455,335	446,572	2.0
Appalachian Total	7,554	7,632	7,015	237,944	234,359	1.5	380,567	380,695	*
Interior Total	2,832	2,870	2,847	90,184	90,410	-0.2	146,222	150,185	-2.6
Western Total	12,467	12,675	12,242	374,589	369,659	1.3	622,675	616,322	1.0
East of Miss. River	9,484	9,585	8,905	299,808	296,994	0.9	479,042	482,257	-0.7
West of Miss. River	13,370	13,592	13,199	402,909	397,433	1.4	670,422	664,944	0.8
Bituminous and Lignite	22,830	23,153	22,076	701,732	693,472	1.2	1,147,872	1,145,656	0.2
Anthracite	24	24	28	985	956	3.1	1,593	1,545	3.1
U.S. Total	22,853	23,177	22,104	702,717	694,428	1.2	1,149,464	1,147,201	0.2
Railroad Cars Loaded	152,097	154,657	144,619	4,638,917	4,498,629	3.1	7,544,320	7,390,437	2.1

Source: Energy Information Administration



Volume 76 No. 32

OUTPUT FOR WEEK ENDED - Aug 09, 2008

Aug 13, 2008

The net available amount of electric energy distributed by the Total Electric Utility Industry+ for the week ended Saturday, **Aug 09, 2008** was **91,266** gigawatthours (GWh), according to the Edison Electric Institute. This is equivalent to **175** on the weekly electric output index.

WEEKLY ELECTRIC OUTPUT BY GEOGRAPHIC DIVISION
(48 CONTIGUOUS STATES)

	Week Ended August 09		52 Weeks Ended August 09	
	GWh Output	% Increase Over Corresponding Week of 2007	GWh Output	% Increase Over Corresponding Period of 2007
New England	2,663	-7.0	132,998	0.6
Mid-Atlantic	9,810	-9.4	455,866	1.4
Central Industrial	15,574	-11.2	717,824	1.3
West Central	7,905	-5.0	348,678	0.5
Southeast	24,436	-9.7	1,109,256	2.2
South Central	14,902	-0.6	614,299	3.8
Rocky Mountain	6,634	4.2	277,417	3.6
Pacific Northwest	2,844	4.7	166,864	6.6
Pacific Southwest	6,498	3.8	289,233	-0.6
Total United States	91,266	-5.9	4,112,435	2.1

WEEKLY ELECTRIC OUTPUT IN PREVIOUS WEEKS--GWh

Week Ended	2008	Week Ended	2007	% Inc. (08/07)	52 Weeks Ended	2008	% Inc. (08/07)
Jul 19	90,310	Jul 21	87,961	2.7	Jul 19	4,113,890	1.9
Jul 26	91,262	Jul 28	86,636	5.3	Jul 26	4,118,516	2.2
Aug 02	93,147	Aug 04	93,540	-0.4	Aug 02	4,118,123	2.3
Aug 09	91,266	Aug 11	96,955	-5.9	Aug 09	4,112,435	2.1
Aug 09	2,520,258	Aug 11	2,508,436	0.5	YEAR TO DATE, FIRST 32 WEEKS		

WEEKLY ELECTRIC OUTPUT INDEX--TOTAL U.S.*
SEASONALLY ADJUSTED 1982 = 100

Week Ended	2008	Week Ended	2007	Week Ended	2006
Jul 19	174	Jul 21	174	Jul 22	197
Jul 26	176	Jul 28	171	Jul 29	187
Aug 02	177	Aug 04	183	Aug 05	198
Aug 09	175	Aug 11	190	Aug 12	186

* Excludes Alaska and Hawaii.

+ Includes investor-owned companies, cooperatives and government-owned utilities.

Copyright © 2008 Edison Electric Institute. All rights reserved.

WEEKLY ELECTRIC OUTPUT BY GEOGRAPHIC DIVISION (48 CONTIGUOUS STATES)

	Week Ended			NMA CUMULATIVE JANUARY WEEK ONE TO			52 Weeks Ended		
	9-Aug 2008 GWh Output	11-Aug 2007 GWh Output	% Increase Over Corresponding Week of 2007	9-Aug 2008 GWh Output	11-Aug 2007 GWh Output	% Increase Over Corresponding Week of 2007	9-Aug 2008 GWh Output	11-Aug 2007 GWh Output	% Increase Over Corresponding Week of 2007
New England	2,663	2,864	-7.0%	81,785	83,233	-1.7%	132,998	132,212	0.6%
Mid-Atlantic	9,810	10,827	-9.4%	280,691	283,493	-1.0%	455,866	449,530	1.4%
Central Industrial	15,574	17,545	-11.2%	440,143	444,456	-1.0%	717,824	708,279	1.3%
West Central	7,905	8,323	-5.0%	214,713	218,250	-1.6%	348,678	347,019	0.5%
Southeast	24,436	27,064	-9.7%	676,352	673,756	0.4%	1,109,256	1,085,084	2.2%
South Central	14,902	14,985	-0.6%	381,912	365,749	4.4%	614,299	591,767	3.8%
Rocky Mountain	6,634	6,367	4.2%	164,781	164,792	0.0%	277,417	267,844	3.6%
Pacific Northwest	2,844	2,717	4.7%	104,547	96,763	8.0%	166,864	156,506	6.6%
Pacific Southwest	6,498	6,263	3.8%	175,335	177,943	-1.5%	289,233	290,895	-0.6%
Total United States *	91,266	96,955	-5.9%	2,520,259	2,508,435	0.5%	4,112,435	4,029,136	2.1%

Notes: EEI output data are an estimate of electricity load made available for distribution derived as weekly net generation + purchases from non-utilities + net imports - exports - sales for resale. It is not meant to be a measure of electricity generation for the U.S. EEI survey data represent the majority of national distribution (large utilities, large government power projects, some independent and large municipal power projects). The remaining segment of the industry (smaller producers) is estimated. Non-utility generation is captured via direct sales to utilities.

* Excludes Alaska and Hawaii

** Less than one-tenth of one percent

SOURCE: Edison Electric Institute (EEI), *Weekly Electric Output Report*.

AMERICAN IRON AND STEEL INSTITUTE
 1140 Connecticut Avenue, Suite 705
 Washington, D.C. 20036

August 11, 2008

ESTIMATED WEEKLY RAW STEEL * PRODUCTION

Period	Thousand Net Tons	Percent Change from Previous Period	Percent Capability Utilization**	Production by District		
				Week Ending Aug. 9	Week Ending Aug. 2	
Week Ending				North East Coast	190	178
				Pgh/Youngstown	215	217
				Lake Erie	94	87
				Detroit	112	102
				Indiana/Chicago	500	499
				Midwest	270	271
				Southern	667	663
				Western	94	96
				Total	2,142	2,113
Year-to-Date+						
August 9, 2008	2,142	1.4	89.8			
August 9, 2007	2,075	3.3	87.7			
August 2, 2008	2,113	-1.4	88.6			
August 9, 2008	67,097	2.5	88.7			
August 9, 2007	65,487	-	86.1			

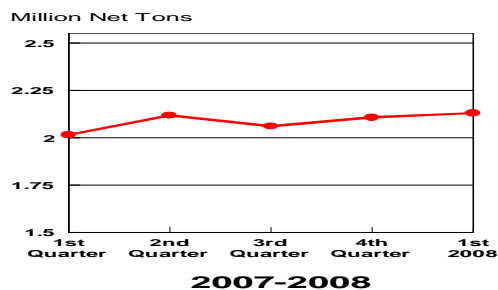
*Raw steel production tonnage included in this report is estimated based on a sampling of steel producers. Therefore, this report should be used primarily to assess production trends. The AISI production report "AIS 7," produced monthly and available by subscription, provides a more accurate summary of steel production based on data supplied by companies representing approximately 75% of U.S. production capacity.

+ Includes revisions for previous months

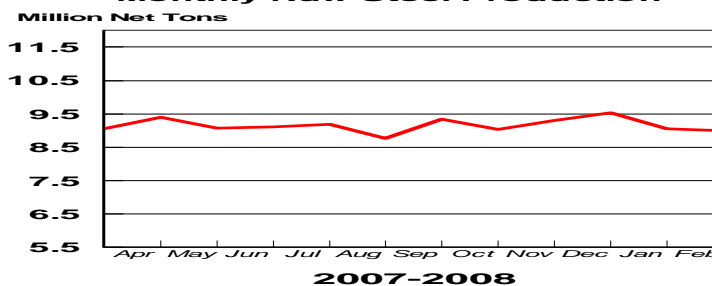
NOTE: Capability for the Fourth Quarter 2007 is approximately 31.3 million net tons vs 30.7 million net tons for the same period last year, and 30.1 million tons for the third quarter of 2007.

Year	Capability (Million Net Tons/Week)
2003	2.3
2004	2.2
2005	2.3
2006	2.4
2007	2.4

Average Weekly Raw Steel Production

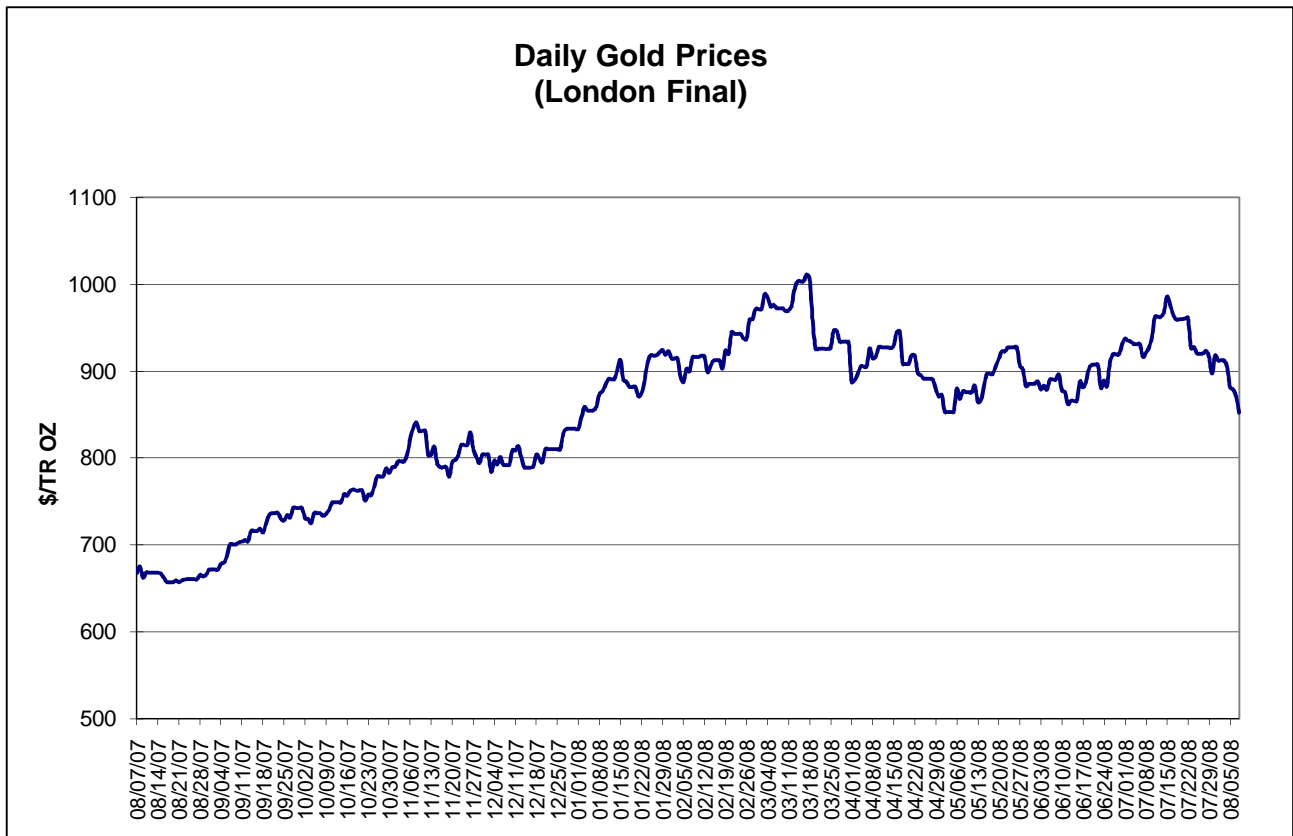
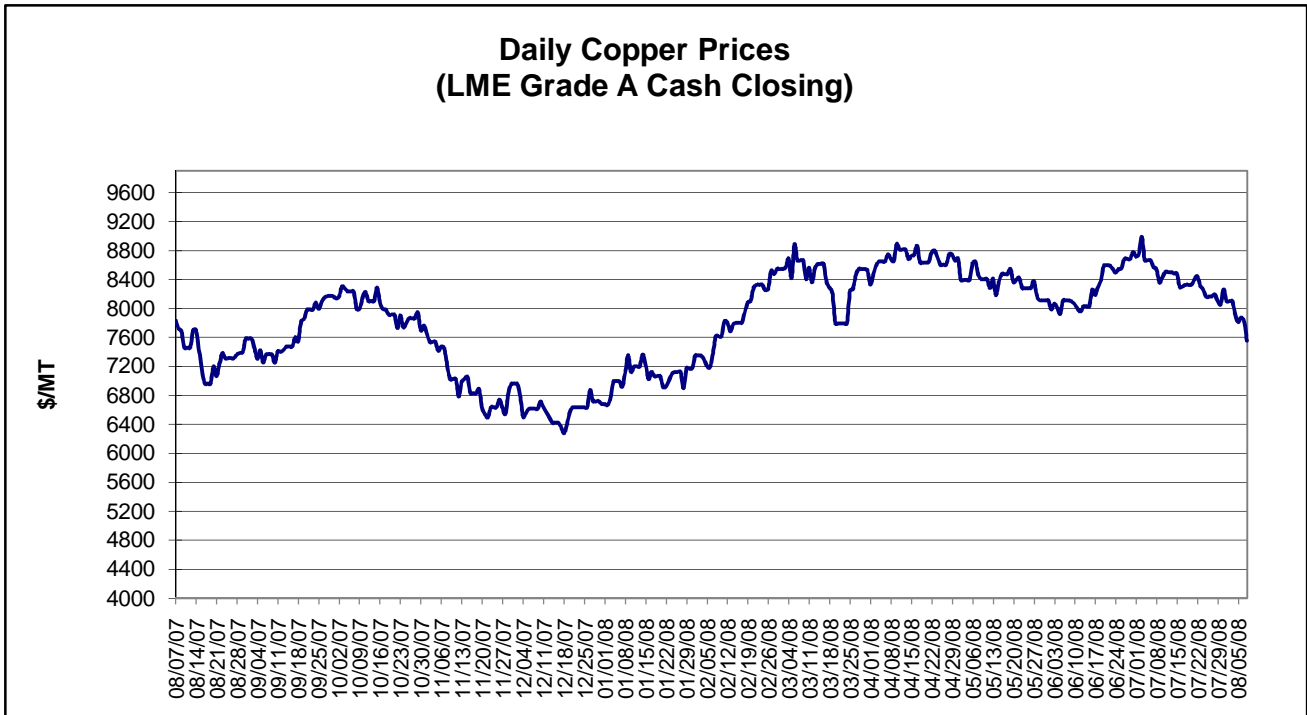


Monthly Raw Steel Production



*Steel in the first solid state after melting suitable for further processing or sale, including ingots, steel for castings and strand or pressure cast blooms, slabs, or other product forms.

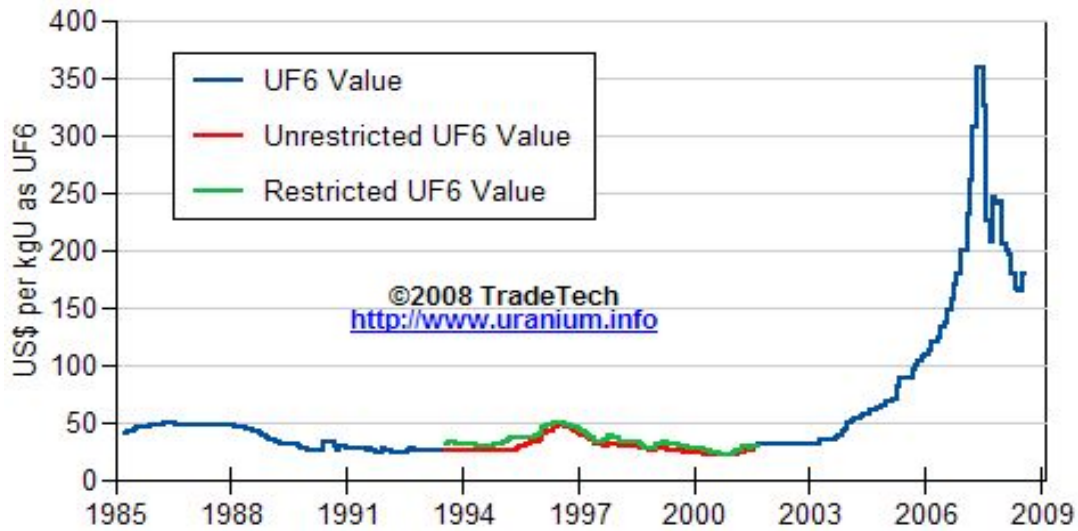
** Based on tonnage capability to produce raw steel for a sustained full order book.



Data reflect closings on weekends and holidays.

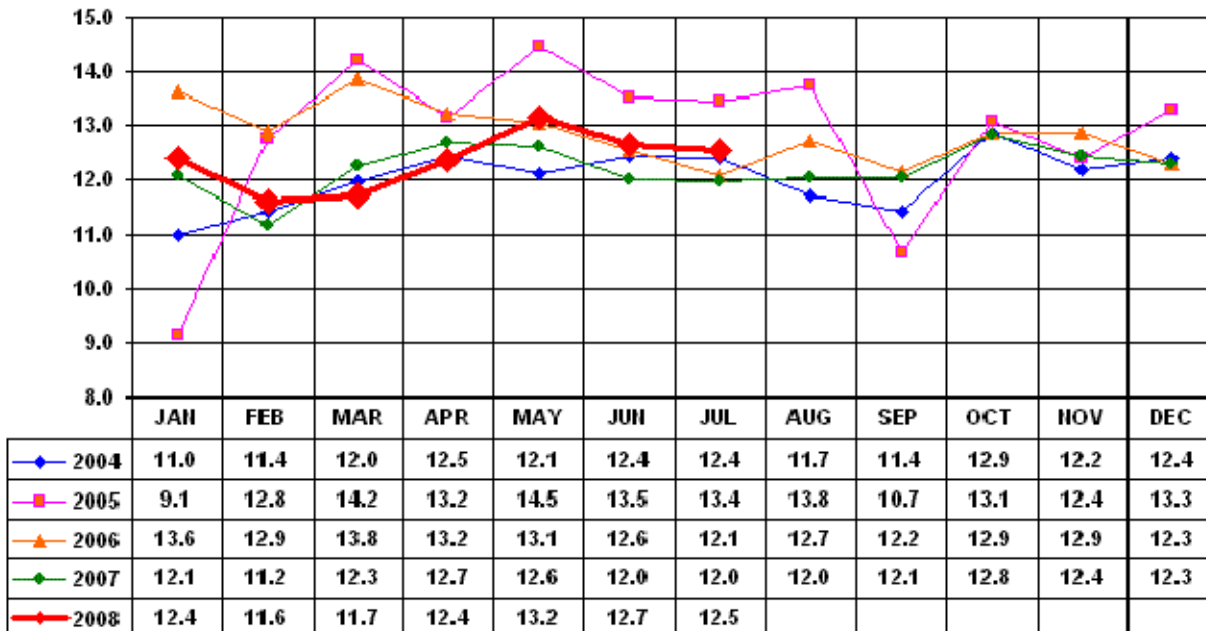
Source: Platts Metals Week

Trade Tech's Uranium (UF6) Monthly Spot Prices (US\$/kg as UF6)



Source: Trade Tech, Uranium Info Website – <http://www.uranium.info>

Coal and Coke Monthly Tonnage Indicator for Internal U.S. Waterways



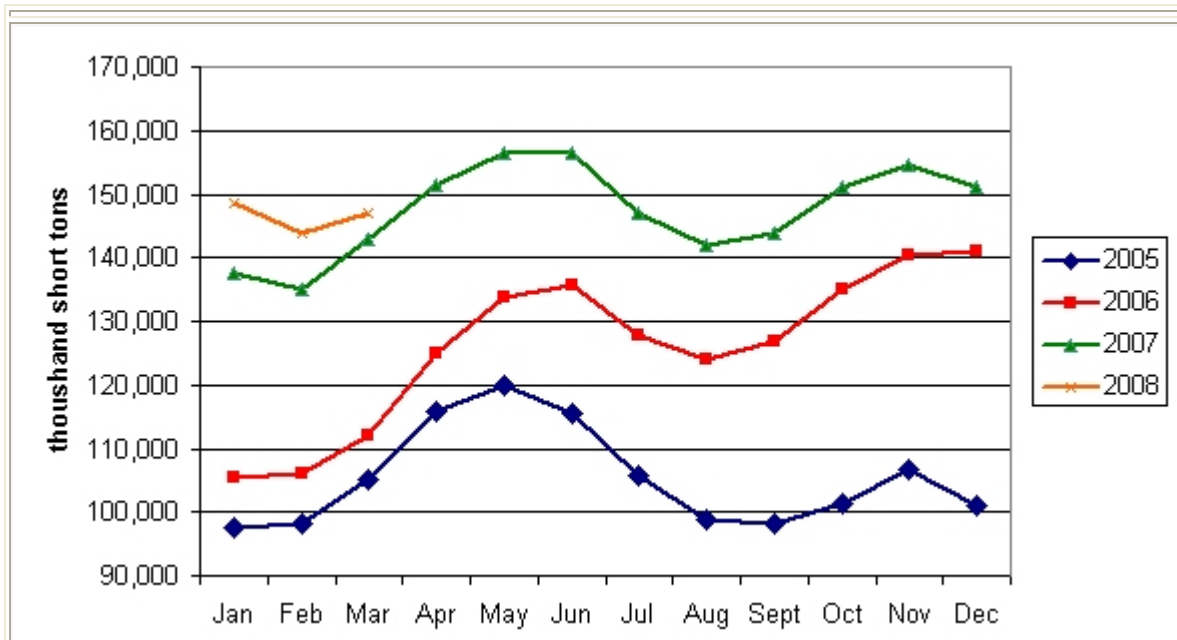
Source: U.S. Army Corps of Engineers, Waterborne Commerce Statistics Center

EIA Weekly Spot Coal Prices

Average Spot Coal Prices (Dollars per Short Ton)					
Week Ended	Central Appalachia 12,500 Btu, 1.2 SO2	Northern Appalachia 13,000 Btu, <3.0 SO2	Illinois Basin 11,800 Btu, 5.0 SO2	Powder River Basin 8,800 Btu, 0.8 SO2	Uinta Basin 11,700 Btu, 0.8 SO2
11-July-08	\$134.55	\$138.00	\$70.00	\$14.00	\$56.00
18-July-08	\$139.30	\$138.00	\$70.00	\$14.00	\$56.00
25-July-08	\$140.00	\$149.00	\$71.00	\$12.50	\$62.00
01-Aug-08	\$140.00	\$149.00	\$71.00	\$12.50	\$62.00
08-Aug-08	\$140.00	\$146.00	\$95.00	\$12.50	\$62.00

Source: Energy Information Administration (from Platts *Coal Outlook*, "Weekly Price Survey")

EIA Electric Power Sector Coal Stocks



Source: Energy Information Administration

USGS Production of Selected Mineral Commodities	2008 First Quarter	2007 First Quarter	Percent Change
Aluminum, secondary (000 Mt.)	240.0	243.0	-1%
Cement (Mil. Mt.)	17.2	18.0	-4%
Gypsum (Mil. Mt.) *	4.7	5.4	-13%
Iron Ore (Mil. Mt.)	12.9	11.4	13%
Phosphate rock (Mil. Mt.)	7.6	7.1	7%
Sand & gravel, construction (Mil. Mt.)	184.0	194.0	-5%
Soda ash (Mil. Mt.)	2.8	2.7	4%
Stone, crushed (Mil. Mt.)	280.0	263.0	6%
Zinc (000 Mt.)	207.0	181.0	14%

Source: U.S. Geological Survey, Mineral Industry Surveys, *U.S. Production of Selected Mineral Commodities in the First Quarter 2008*

* Revised June 16, 2008. Note - data are preliminary.