
National Mining Association

Weekly Statistical Summary

August 17, 2007 Edition
(Data for Week Ending August 11, 2007)

Prepared by
National Mining Association



Suite 500 East, 101 Constitution Avenue, NW
Washington, DC, 20001
Phone (202) 463-2600
Visit us at <http://www.nma.org>

NMA Weekly Statistical Summary

Vol. 45, No. 32
Dated 08/17/07

PRODUCTION, CONSUMPTION & TRADE						
	Week Ended			Cumulative Jan 1 to		
	08/11/07	08/12/06	% Chng	08/11/07	08/12/06	% Chng
EIA Coal Production (000 Tons):						
Week Ended/Year to Date	22,264	22,239	0.1%	697,294	713,677	-2.3%
52 Weeks Ended	1,143,376	1,148,272	-0.4%			
Month Ended -- July						
	July 07/06		% Chng	Jan - July 07/06		% Chng
	93,684	94,985	-1.4%	661,873	676,484	-2.2%
MONTH ENDED AND CUMULATIVE NUMBERS ARE PRELIMINARY AND SUBJECT TO CHANGE						
DOC Bituminous Coal Trade (000 Tons)						
Exports:	May 07/06			Jan - May 07/06		
			% Chng			% Chng
Metallurgical	2,626	2,613	0.5%	11,749	11,225	4.7%
Steam	2,086	2,158	-3.3%	8,798	7,489	17.5%
Imports:	2,691	2,742	-1.9%	14,164	14,729	-3.8%
Week Ended						
	08/11/07	08/12/06	% Chng	Cumulative Jan 1 to		
				08/11/07	08/12/06	% Chng
EEl Electric Output (Mil. Kwh)	96,955	92,651	4.6%	2,508,436	2,468,167	1.6%
AISI Raw Steel Output (000 Tons)	2,043	2,086	-2.1%	64,734	68,631	-5.7%
EIA U.S. PETROLEUM DATA						
4-Week Averages 000 Barrels per Day						
Week Ending						
	08/10/07	08/10/06	% Chng	Cumulative Daily Averages		
				2007	2006	% Chng
PETROLEUM SUPPLY:						
Domestic Crude	5,181	5,166	0.3	5,186	5,098	1.7
Net Imports (Incl. SPR)	10,080	10,263	-1.8	10,090	10,037	0.5
SPR Stocks W/D or Added	0	0	--	-8	-15	--
Other Stocks W/D or added	604	112	--	-142	-33	--
Natural Gas Liquids Prod.	2,430	2,367	2.7	2,375	2,185	8.7



NMA

THE AMERICAN RESOURCE

National Mining Association Web Site: [http:// www.nma.org](http://www.nma.org)

EIA Estimated Weekly U.S. Coal Production Overview (Thousand Short Tons)

Coal-Producing Region and State	Week Ended			Year to Date			52 Weeks Ended		
	8/11/2007	8/4/2007	8/12/2006	8/11/2007	8/11/2006	Percent Change	8/11/2007	8/12/2006	Percent Change
Alabama	387	395	350	12,438	12,087	2.9	19,370	19,663	-1.5
Alaska	26	27	25	950	864	9.9	1,510	1,296	16.5
Arizona	149	152	166	4,839	4,996	-3.2	8,058	9,371	-14.0
Arkansas	1	1	s	30	11	176.9	42	12	250.2
Colorado	739	755	728	21,867	21,536	1.5	36,576	35,807	2.1
Illinois	624	637	653	21,283	19,770	7.7	33,677	31,355	7.4
Indiana	688	702	686	21,966	21,807	0.7	35,877	35,136	2.1
Kansas	9	9	9	271	215	26.1	482	280	72.1
Kentucky Total	2,239	2,286	2,282	71,611	75,908	-5.7	115,985	121,490	-4.5
Eastern	1,680	1,715	1,769	53,581	59,122	-9.4	87,494	94,431	-7.3
Western	559	571	513	18,030	16,786	7.4	28,491	27,059	5.3
Louisiana	90	61	80	1,836	2,435	-24.6	3,508	4,053	-13.4
Maryland	100	102	120	2,481	3,541	-29.9	3,993	5,443	-26.6
Mississippi	80	84	55	2,278	2,383	-4.4	3,687	3,762	-2.0
Missouri	6	6	4	168	292	-42.3	270	541	-50.0
Montana	780	796	830	24,697	25,013	-1.3	41,407	40,893	1.3
New Mexico	487	497	487	14,647	15,579	-6.0	24,972	26,982	-7.4
North Dakota	509	519	616	17,310	18,127	-4.5	29,594	30,123	-1.8
Ohio	462	472	434	14,295	14,064	1.6	22,938	23,614	-2.9
Oklahoma	39	40	37	1,147	1,289	-11.0	1,857	2,013	-7.8
Pennsylvania Total	1,185	1,210	1,193	39,745	41,562	-4.4	64,251	67,724	-5.1
Anthracite	27	27	31	903	934	-3.3	1,483	1,610	-7.9
Bituminous	1,158	1,183	1,162	38,842	40,628	-4.4	62,768	66,114	-5.1
Tennessee	55	56	55	1,737	1,763	-1.5	2,778	2,971	-6.5
Texas	889	907	958	26,571	27,543	-3.5	44,452	46,148	-3.7
Utah	450	459	452	14,554	16,046	-9.3	24,515	25,462	-3.7
Virginia	556	568	571	17,706	18,666	-5.1	28,886	29,059	-0.6
Washington	0	0	53	0	1,791	-100.0	789	3,683	-78.6
West Virginia Total	2,860	2,920	2,850	94,013	95,583	-1.6	150,208	153,621	-2.2
Northern	886	904	763	28,651	27,401	4.6	43,920	43,818	0.2
Southern	1,975	2,016	2,087	65,362	68,182	-4.1	106,288	109,803	-3.2
Wyoming	8,856	8,841	8,545	268,855	270,809	-0.7	443,692	427,774	3.7
Appalachian Total	7,285	7,438	7,340	235,996	246,387	-4.2	379,920	396,525	-4.2
Interior Total	2,984	3,017	2,995	93,580	92,530	1.1	152,343	150,358	1.3
Western Total	11,995	12,046	11,903	367,718	374,760	-1.9	611,113	601,389	1.6
East of Miss. River	9,236	9,432	9,247	299,553	307,134	-2.5	481,653	493,836	-2.5
West of Miss. River	13,028	13,069	12,991	397,741	406,543	-2.2	661,724	654,436	1.1
Bituminous and Lignite	22,238	22,474	22,208	696,391	712,744	-2.3	1,141,893	1,146,662	-0.4
Anthracite	27	27	31	903	934	-3.3	1,483	1,610	-7.9
U.S. Total	22,264	22,501	22,239	697,294	713,677	-2.3	1,143,376	1,148,272	-0.4
Railroad Cars Loaded	144,619	146,905	146,591	4,498,629	4,563,549	-1.4	7,390,437	7,315,030	1.0

Source: Energy Information Administration



Volume 75 No. 32

OUTPUT FOR WEEK ENDED - Aug 11, 2007

Aug 15, 2007

The net available amount of electric energy distributed by the Total Electric Utility Industry+ for the week ended Saturday, **Aug 11, 2007** was **96,955** gigawatthours (GWh), according to the Edison Electric Institute. This is equivalent to **190** on the weekly electric output index.

WEEKLY ELECTRIC OUTPUT BY GEOGRAPHIC DIVISION
(48 CONTIGUOUS STATES)

	Week Ended August 11		52 Weeks Ended August 11	
	GWh Output	% Increase Over Corresponding Week of 2006	GWh Output	% Increase Over Corresponding Period of 2006
New England	2,864	2.8	132,212	-1.6
Mid-Atlantic	10,827	3.7	449,530	-0.4
Central Industrial	17,545	10.3	708,279	0.7
West Central	8,323	6.4	347,019	0.1
Southeast	27,064	7.2	1,085,084	0.4
South Central	14,985	0.1	591,767	-1.2
Rocky Mountain	6,367	1.0	267,844	3.6
Pacific Northwest	2,717	4.1	156,506	3.7
Pacific Southwest	6,263	-4.6	290,895	-0.6
Total United States	96,955	4.6	4,029,137	0.3

WEEKLY ELECTRIC OUTPUT IN PREVIOUS WEEKS--GWh

Week Ended	2007	Week Ended	2006	% Inc. (07/06)	52 Weeks Ended	2007	% Inc. (07/06)
Jul 21	87,961	Jul 22	96,314	-8.7	Jul 21	4,036,342	0.6
Jul 28	86,636	Jul 29	93,102	-6.9	Jul 28	4,029,876	0.4
Aug 04	93,540	Aug 05	98,583	-5.1	Aug 04	4,024,833	0.2
Aug 11	96,955	Aug 12	92,651	4.6	Aug 11	4,029,137	0.3
Aug 11	2,508,436	Aug 12	2,468,167	1.6	YEAR TO DATE, FIRST 32 WEEKS		

WEEKLY ELECTRIC OUTPUT INDEX--TOTAL U.S.*
SEASONALLY ADJUSTED 1982 = 100

Week Ended	2007	Week Ended	2006	Week Ended	2005
Jul 21	174	Jul 22	197	Jul 23	187
Jul 28	171	Jul 29	187	Jul 30	181
Aug 04	183	Aug 05	198	Aug 06	182
Aug 11	190	Aug 12	186	Aug 13	180

* Excludes Alaska and Hawaii

+ Includes investor-owned companies, cooperatives and government-owned utilities.

Copyright © 2007 Edison Electric Institute. All rights reserved.

WEEKLY ELECTRIC OUTPUT BY GEOGRAPHIC DIVISION (48 CONTIGUOUS STATES)

	Week Ended			NMA CUMULATIVE JANUARY 1 to			52 Weeks Ended		
	11-Aug	12-Aug	% Increase Over Corresponding Week of 2006	11-Aug	12-Aug	% Increase Over Corresponding Week of 2006	11-Aug	12-Aug	% Increase Over Corresponding Week of 2006
	2007	2006		2007	2006		2007	2006	
	GWh	GWh		GWh	GWh		GWh	GWh	
	Output	Output		Output	Output		Output	Output	
New England	2,864	2,787	2.8%	83,233	82,845	0.5%	132,212	134,407	-1.6%
Mid-Atlantic	10,827	10,446	3.6%	283,493	277,712	2.1%	449,530	451,536	-0.4%
Central Industrial	17,545	15,900	10.3%	444,456	431,064	3.1%	708,279	703,638	0.7%
West Central	8,323	7,825	6.4%	218,250	215,380	1.3%	347,019	346,701	0.1%
Southeast	27,064	25,246	7.2%	673,756	660,762	2.0%	1,085,084	1,080,460	0.4%
South Central	14,985	14,965	0.1%	365,749	372,353	-1.8%	591,767	599,183	-1.2%
Rocky Mountain	6,367	6,304	1.0%	164,792	157,572	4.6%	267,844	258,445	3.6%
Pacific Northwest	2,717	2,610	4.1%	96,763	91,631	5.6%	156,506	150,955	3.7%
Pacific Southwest	<u>6,263</u>	<u>6,568</u>	-4.6%	<u>177,943</u>	<u>178,851</u>	-0.5%	<u>290,895</u>	<u>292,597</u>	-0.6%
Total United States *	96,955	92,651	4.6%	2,508,435	2,468,170	1.6%	4,029,136	4,017,922	0.3%

Notes: EEI output data are an estimate of electricity load made available for distribution derived as weekly net generation + purchases from non-utilities + net imports - exports - sales for resale. It is not meant to be a measure of electricity generation for the U.S. EEI survey data represent the majority of national distribution (large utilities, large government power projects, some independent and large municipal power projects). The remaining segment of the industry (smaller producers) is estimated. Non-utility generation is captured via direct sales to utilities.

* Excludes Alaska and Hawaii

** Less than one-tenth of one percent

SOURCE: Edison Electric Institute (EEI), *Weekly Electric Output Report*.

AMERICAN IRON AND STEEL INSTITUTE
 1140 Connecticut Avenue, Suite 705
 Washington, D.C. 20036

August 13, 2007

ESTIMATED WEEKLY RAW STEEL* PRODUCTION

<u>Period</u>	<u>Thousand Net Tons</u>	<u>Percent Change from Previous Period</u>	<u>Percent Capability Utilization**</u>	<u>Production by District</u>		
				<u>Week Ending</u>		
				<u>Aug 11</u>	<u>Aug 4</u>	
<u>Week Ending</u>						
				North East Coast	141	149
				Pgh/Youngstown	206	209
				Lake Erie	112	107
				Detroit	123	115
				Indiana/Chicago	512	520
				Midwest	240	253
				Southern	621	618
				Western	88	87
				Total	2043	2058
<u>Year-to-Date+</u>						
Aug 11, 2007	2,043	-0.7	86.3			
Aug 11, 2006	2,086	-2.0	88.7			
Aug 4, 2007	2,058	-0.9	87.0			
Aug 11, 2007	64,734	-5.6	85.0			
Aug 11, 2006	68,631	-	90.0			

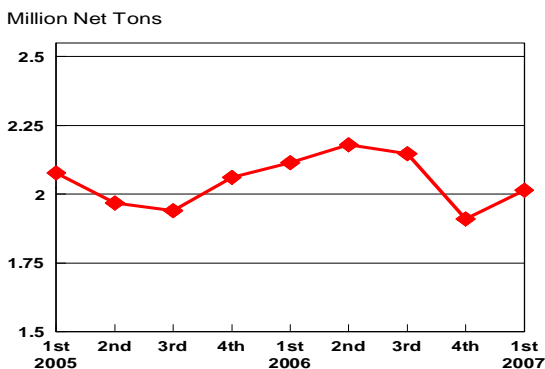
*Raw steel production tonnage included in this report is estimated based on a sampling of steel producers. Therefore, this report should be used primarily to assess production trends. The AISI production report "AIS 7," produced monthly and available by subscription, provides a more accurate summary of steel production based on data supplied by companies representing approximately 75% of U.S. production capacity.

+Includes revisions for previous months

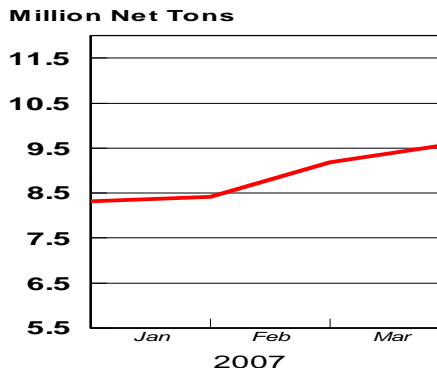
NOTE: Capability for the First Quarter 2007 is approximately 31.2 million net tons vs 30.5 million net tons for the same period last year, and 30.7 million tons for the fourth quarter of 2006.

Capability -	2003 approx.	2004	2005	2006	2007
	2.3 million tons/week	2.2	2.3	2.4	2.4

Average Weekly Raw Steel Production

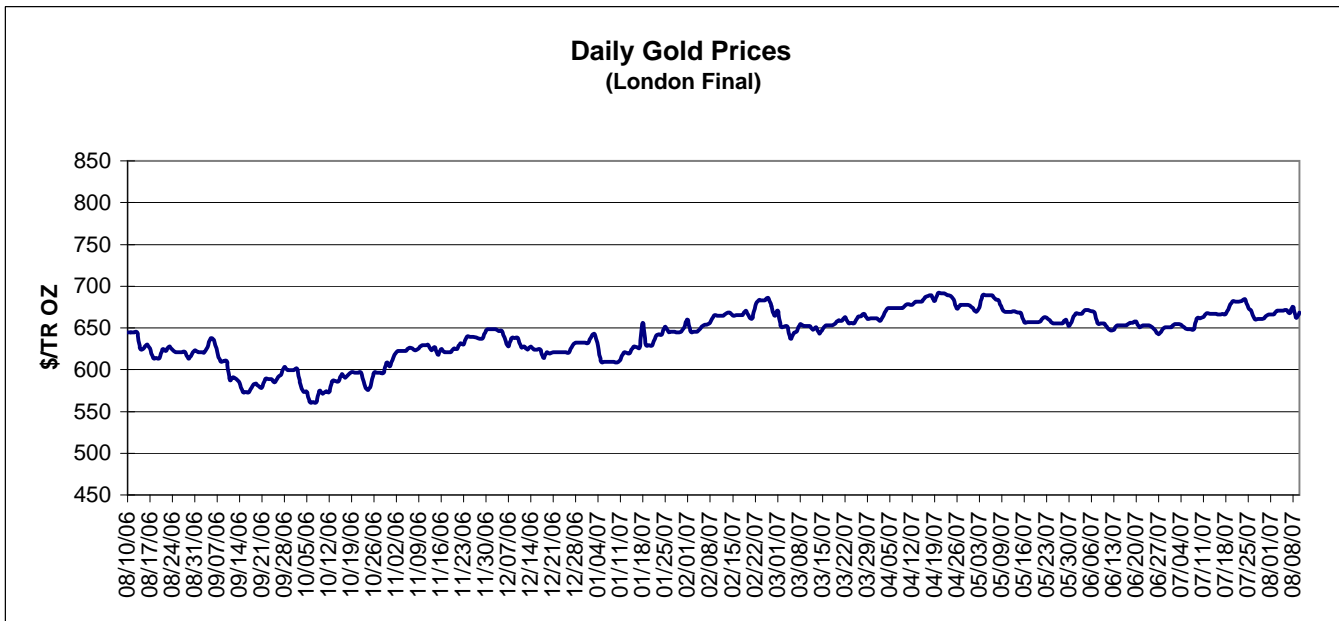
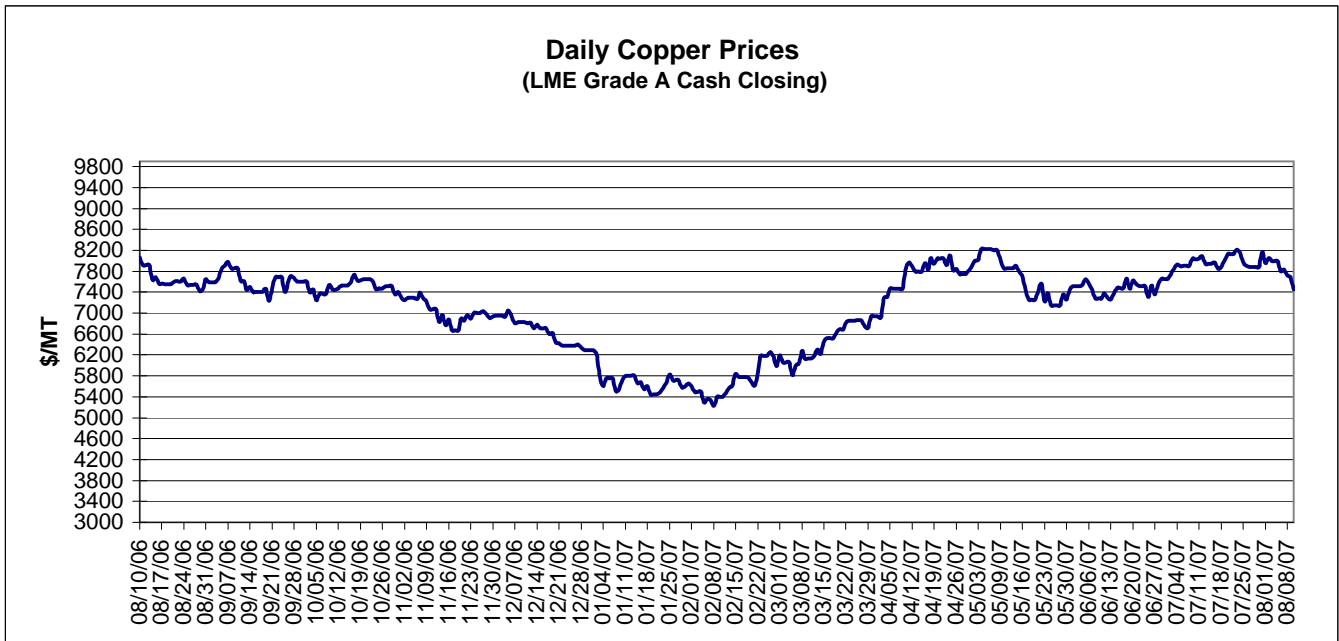


MONTHLY RAW STEEL PRODUCTION



*Steel in the first solid state after melting suitable for further processing or sale, including ingots, steel for castings and strand or pressure cast blooms, slabs, or other product forms.

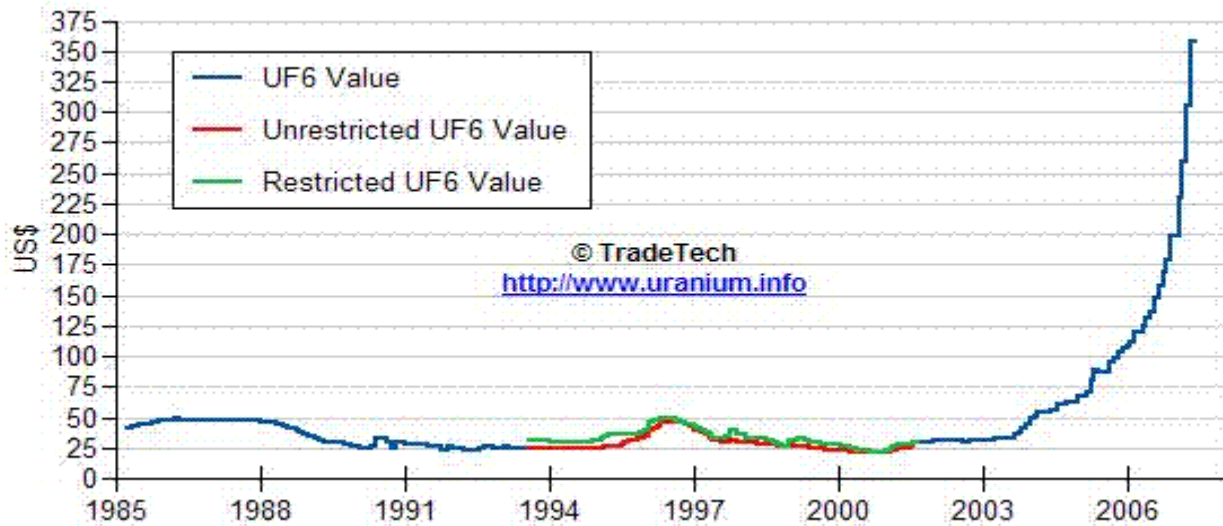
** Based on tonnage capability to produce raw steel for a sustained full order book.



Data reflect closings on weekends and holidays.

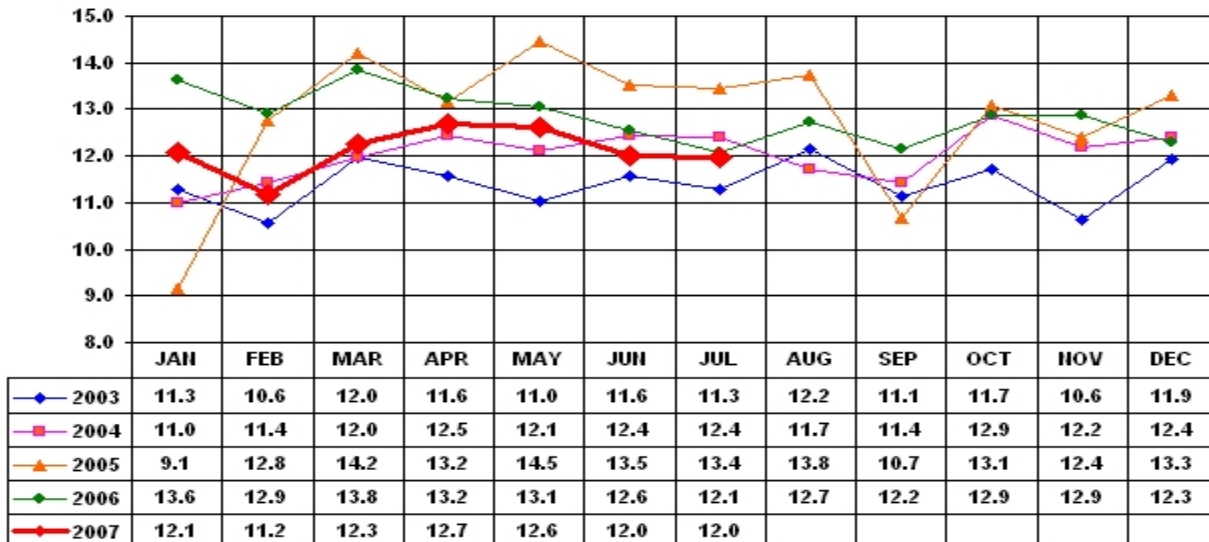
Source: Platts Metals Week

Trade Tech's Uranium (UF6) Monthly Spot Prices (US\$/kg as UF6)



Source: Trade Tech, Uranium Info Website – <http://www.uranium.info>

Coal and Coke Monthly Tonnage Indicator for Internal U.S. Waterways



Source: U.S. Army Corps of engineers, Waterborne Commerce Statistics Center