
National Mining Association

Weekly Statistical Summary

August 22, 2008 Edition
(Data for Week Ending August 16, 2008)

Prepared by
National Mining Association



Suite 500 East, 101 Constitution Avenue, NW
Washington, DC, 20001
Phone (202) 463-2600
Visit us at <http://www.nma.org>

NMA Weekly Statistical Summary

Vol. 46, No. 33
Dated 08/22/08

PRODUCTION, CONSUMPTION & TRADE						
	Week Ended			* Cumulative Jan 1 to		
	08/16/08	08/18/07	% Chng	08/16/08	08/16/07	% Chng
EIA Coal Production (000 Tons):						
Week Ended/Year to Date	23,077	22,416	2.9%	725,794	716,789	1.3%
52 Weeks Ended	1,150,125	1,147,199	0.3%			
* Due to leap year, 2008 cumulative reflects one extra day of tonnage.						
	July 08/07		% Chng	Jan - July 08/07		% Chng
Month Ended -- July	98,578	93,003	6.0%	674,159	664,731	1.4%
MONTH ENDED AND CUMULATIVE NUMBERS ARE PRELIMINARY AND SUBJECT TO CHANGE						
DOC Bituminous Coal Trade (000 Tons)						
	June 08/07		% Chng	Jan - June 08/07		% Chng
Exports:						
Metallurgical	3,417	2,893	18.1%	21,660	14,642	47.9%
Steam	3,188	2,195	45.2%	16,902	10,993	53.8%
Imports:	3,295	3,027	8.9%	16,622	17,191	-3.3%
	Week Ended			* Cumulative Jan 1 to		
	08/16/08	08/18/07	% Chng	08/16/08	08/18/07	% Chng
EEl Electric Output (Mil. Kwh)	84,228	94,455	-10.8%	2,604,486	2,602,891	0.1%
AISI Raw Steel Output (000 Tons)	2,167	2,075	4.4%	69,264	67,562	2.5%
EIA U.S. PETROLEUM DATA						
4-Week Averages						
000 Barrels per Day						
	Week Ending			Cumulative Daily Averages		
	08/15/08	08/15/07	% Chng	2008	2007	% Chng
PETROLEUM SUPPLY:						
Domestic Crude	5,137	4,993	2.9	5,130	5,110	0.4
Net Imports (Incl. SPR)	10,184	10,084	-1.0	9,852	10,006	-1.5
SPR Stocks W/D or Added	-37	-3	--	-46	-8	--
Other Stocks W/D or added	-379	532	--	-76	-76	--
Natural Gas Liquids Prod.	2,378	2,442	-2.6	2,245	2,368	-5.2



NMA

THE AMERICAN RESOURCE National Mining Association Web Site: [http:// www.nma.org](http://www.nma.org)

EIA Estimated Weekly U.S. Coal Production Overview (Thousand Short Tons)

Coal-Producing Region and State	Week Ended			Year to Date		Percent Change	52 Weeks Ended		Percent Change
	8/16/2008	8/9/2008	8/18/2007	8/16/2008	8/16/2007		8/16/2008	8/18/2007	
Alabama	393	382	381	13,160	12,215	7.7	20,389	18,875	8.0
Alaska	28	27	14	915	883	3.6	1,353	1,422	-4.9
Arizona	160	156	165	4,548	5,111	-11.0	7,387	8,197	-9.9
Arkansas	1	1	2	42	49	-15.5	75	61	21.4
Colorado	824	801	743	23,162	22,754	1.8	36,596	36,928	-0.9
Illinois	608	591	608	19,953	22,476	-11.2	30,197	34,890	-13.4
Indiana	713	693	727	22,372	22,011	1.6	35,204	35,194	*
Kansas	6	6	8	242	272	-10.9	389	475	-18.1
Kentucky Total	2,419	2,352	2,263	75,974	73,347	3.6	117,673	116,284	1.2
Eastern	1,826	1,775	1,700	56,710	55,550	2.1	88,067	88,413	-0.4
Western	593	577	563	19,263	17,796	8.2	29,606	27,871	6.2
Louisiana	87	84	53	2,520	1,676	50.3	3,957	3,271	21.0
Maryland	42	41	42	1,419	1,409	0.7	2,303	2,809	-18.0
Mississippi	97	69	80	2,286	2,309	-1.0	3,501	3,654	-4.2
Missouri	4	4	4	143	145	-1.6	233	245	-4.9
Montana	854	830	915	28,080	25,746	9.1	45,475	41,872	8.6
New Mexico	505	491	420	14,096	15,618	-9.7	22,840	25,542	-10.6
North Dakota	574	558	619	17,844	18,466	-3.4	28,861	30,256	-4.6
Ohio	475	462	469	15,313	13,721	11.6	24,064	22,032	9.2
Oklahoma	37	36	33	1,107	1,049	5.5	1,699	1,728	-1.7
Pennsylvania Total	1,297	1,261	1,229	42,333	41,972	0.9	65,293	65,585	-0.4
Anthracite	25	24	30	1,010	985	2.5	1,587	1,544	2.8
Bituminous	1,273	1,237	1,199	41,323	40,987	0.8	63,705	64,040	-0.5
Tennessee	53	52	50	1,644	1,655	-0.6	2,634	2,652	-0.7
Texas	794	772	869	25,195	25,548	-1.4	41,354	42,709	-3.2
Utah	482	469	421	15,871	15,127	4.9	24,960	24,725	1.0
Virginia	488	474	459	14,901	17,284	-13.8	22,977	27,998	-17.9
Washington	--	--	--	--	--	--	0	736	-100.0
West Virginia Total	3,195	3,106	3,025	100,233	97,833	2.5	155,258	152,307	1.9
Northern	829	806	810	27,375	27,455	-0.3	41,963	41,938	0.1
Southern	2,366	2,300	2,214	72,858	70,377	3.5	113,295	110,369	2.7
Wyoming	8,939	9,135	8,818	282,440	278,111	1.6	455,455	446,753	1.9
Appalachian Total	7,770	7,554	7,354	245,714	241,640	1.7	380,983	380,670	0.1
Interior Total	2,940	2,832	2,946	93,124	93,333	-0.2	146,215	150,097	-2.6
Western Total	12,367	12,467	12,116	386,956	381,816	1.3	622,926	616,431	1.1
East of Miss. River	9,781	9,484	9,331	309,589	306,233	1.1	479,491	482,278	-0.6
West of Miss. River	13,296	13,370	13,085	416,205	410,555	1.4	670,633	664,921	0.9
Bituminous and Lignite	23,052	22,830	22,386	724,784	715,803	1.3	1,148,538	1,145,654	0.3
Anthracite	25	24	30	1,010	985	2.5	1,587	1,544	2.8
U.S. Total	23,077	22,853	22,416	725,794	716,789	1.3	1,150,125	1,147,199	0.3
Railroad Cars Loaded	154,977	152,097	147,875	4,793,894	4,646,504	3.2	7,551,422	7,390,629	2.2

Source: Energy Information Administration



Volume 76 No. 33

OUTPUT FOR WEEK ENDED - Aug 16, 2008

Aug 20, 2008

The net available amount of electric energy distributed by the Total Electric Utility Industry+ for the week ended Saturday, **Aug 16, 2008** was **84,228** gigawatthours (GWh), according to the Edison Electric Institute. This is equivalent to **172** on the weekly electric output index.

WEEKLY ELECTRIC OUTPUT BY GEOGRAPHIC DIVISION
(48 CONTIGUOUS STATES)

	Week Ended August 16		52 Weeks Ended August 16	
	GWh Output	% Increase Over Corresponding Week of 2007	GWh Output	% Increase Over Corresponding Period of 2007
New England	2,578	-7.4	132,792	0.4
Mid-Atlantic	9,001	-10.7	454,790	1.1
Central Industrial	13,809	-14.0	715,578	0.9
West Central	6,996	-12.0	347,724	0.0
Southeast	21,976	-15.5	1,105,233	1.7
South Central	13,969	-7.2	613,217	3.7
Rocky Mountain	6,436	-6.0	277,009	3.1
Pacific Northwest	2,934	4.9	167,002	6.6
Pacific Southwest	6,530	-5.4	288,862	-1.1
Total United States	84,228	-10.8	4,102,207	1.7

WEEKLY ELECTRIC OUTPUT IN PREVIOUS WEEKS--GWh

Week Ended	2008	Week Ended	2007	% Inc. (08/07)	52 Weeks Ended	2008	% Inc. (08/07)
Jul 26	91,262	Jul 28	86,636	5.3	Jul 26	4,118,516	2.2
Aug 02	93,147	Aug 04	93,540	-0.4	Aug 02	4,118,123	2.3
Aug 09	91,266	Aug 11	96,955	-5.9	Aug 09	4,112,435	2.1
Aug 16	84,228	Aug 18	94,455	-10.8	Aug 16	4,102,207	1.7
Aug 16	2,604,486	Aug 18	2,602,891	0.0	YEAR TO DATE, FIRST 33 WEEKS		

WEEKLY ELECTRIC OUTPUT INDEX--TOTAL U.S.*
SEASONALLY ADJUSTED 1982 = 100

Week Ended	2008	Week Ended	2007	Week Ended	2006
Jul 26	176	Jul 28	171	Jul 29	187
Aug 02	177	Aug 04	183	Aug 05	198
Aug 09	175	Aug 11	190	Aug 12	186
Aug 16	172	Aug 18	189	Aug 19	179

* Excludes Alaska and Hawaii.

+ Includes investor-owned companies, cooperatives and government-owned utilities.

Copyright © 2008 Edison Electric Institute. All rights reserved.

WEEKLY ELECTRIC OUTPUT BY GEOGRAPHIC DIVISION (48 CONTIGUOUS STATES)

	Week Ended			NMA CUMULATIVE JANUARY WEEK ONE TO			52 Weeks Ended		
	16-Aug 2008 GWh Output	18-Aug 2007 GWh Output	% Increase Over Corresponding Week of 2007	16-Aug 2008 GWh Output	18-Aug 2007 GWh Output	% Increase Over Corresponding Week of 2007	16-Aug 2008 GWh Output	18-Aug 2007 GWh Output	% Increase Over Corresponding Week of 2007
New England	2,578	2,784	-7.4%	84,363	86,017	-1.9%	132,792	132,276	0.4%
Mid-Atlantic	9,001	10,077	-10.7%	289,692	293,570	-1.3%	454,790	449,822	1.1%
Central Industrial	13,809	16,055	-14.0%	453,952	460,511	-1.4%	715,578	709,242	0.9%
West Central	6,996	7,949	-12.0%	221,709	226,199	-2.0%	347,724	347,581	0.0%
Southeast	21,976	25,999	-15.5%	698,328	699,755	-0.2%	1,105,233	1,086,760	1.7%
South Central	13,969	15,051	-7.2%	395,881	380,800	4.0%	613,217	591,454	3.7%
Rocky Mountain	6,436	6,844	-6.0%	171,217	171,636	-0.2%	277,009	268,738	3.1%
Pacific Northwest	2,934	2,796	4.9%	107,481	99,559	8.0%	167,002	156,666	6.6%
Pacific Southwest	6,530	6,900	-5.4%	181,865	184,843	-1.6%	288,862	292,111	-1.1%
Total United States *	84,229	94,455	-10.8%	2,604,488	2,602,890	0.1%	4,102,207	4,034,650	1.7%

Notes: EEI output data are an estimate of electricity load made available for distribution derived as weekly net generation + purchases from non-utilities + net imports - exports - sales for resale. It is not meant to be a measure of electricity generation for the U.S. EEI survey data represent the majority of national distribution (large utilities, large government power projects, some independent and large municipal power projects). The remaining segment of the industry (smaller producers) is estimated. Non-utility generation is captured via direct sales to utilities.

* Excludes Alaska and Hawaii

** Less than one-tenth of one percent

SOURCE: Edison Electric Institute (EEI), *Weekly Electric Output Report*.

AMERICAN IRON AND STEEL INSTITUTE
 1140 Connecticut Avenue, Suite 705
 Washington, D.C. 20036

August 18, 2008

ESTIMATED WEEKLY RAW STEEL * PRODUCTION

<u>Period</u>	<u>Thousand Net Tons</u>	<u>Percent Change from Previous Period</u>	<u>Percent Capability Utilization**</u>	<u>Production by District</u>		
				<u>Week Ending</u>		
				<u>Aug. 16</u>	<u>Aug. 9</u>	
<u>Week Ending</u>						
August 16, 2008	2,167	1.2	90.8	188	190	
August 16, 2007	2,075	4.5	87.7	203	215	
August 9, 2008	2,142	1.4	89.8	93	94	
				100	112	
				529	500	
				272	270	
				684	667	
				98	94	
				Total	2,167	2,142
<u>Year-to-Date+</u>						
August 16, 2008	69,264	2.6	88.7			
August 16, 2007	67,562	-	86.1			

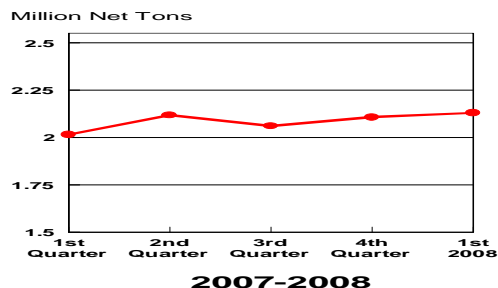
*Raw steel production tonnage included in this report is estimated based on a sampling of steel producers. Therefore, this report should be used primarily to assess production trends. The AISI production report "AIS 7," produced monthly and available by subscription, provides a more accurate summary of steel production based on data supplied by companies representing approximately 75% of U.S. production capacity.

+ Includes revisions for previous months

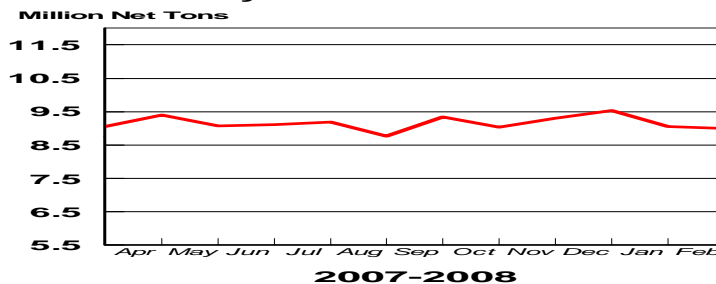
NOTE: Capability for the Third Quarter 2008 is approximately 31.4 million net tons vs 30.1 million net tons for the same period last year, and 31.0 million tons for the second quarter of 2008.

Capability -	2004 approx.	2005	2006	2007	2008
	2.2 million tons/week	2.3	2.4	2.4	2.4

Average Weekly Raw Steel Production

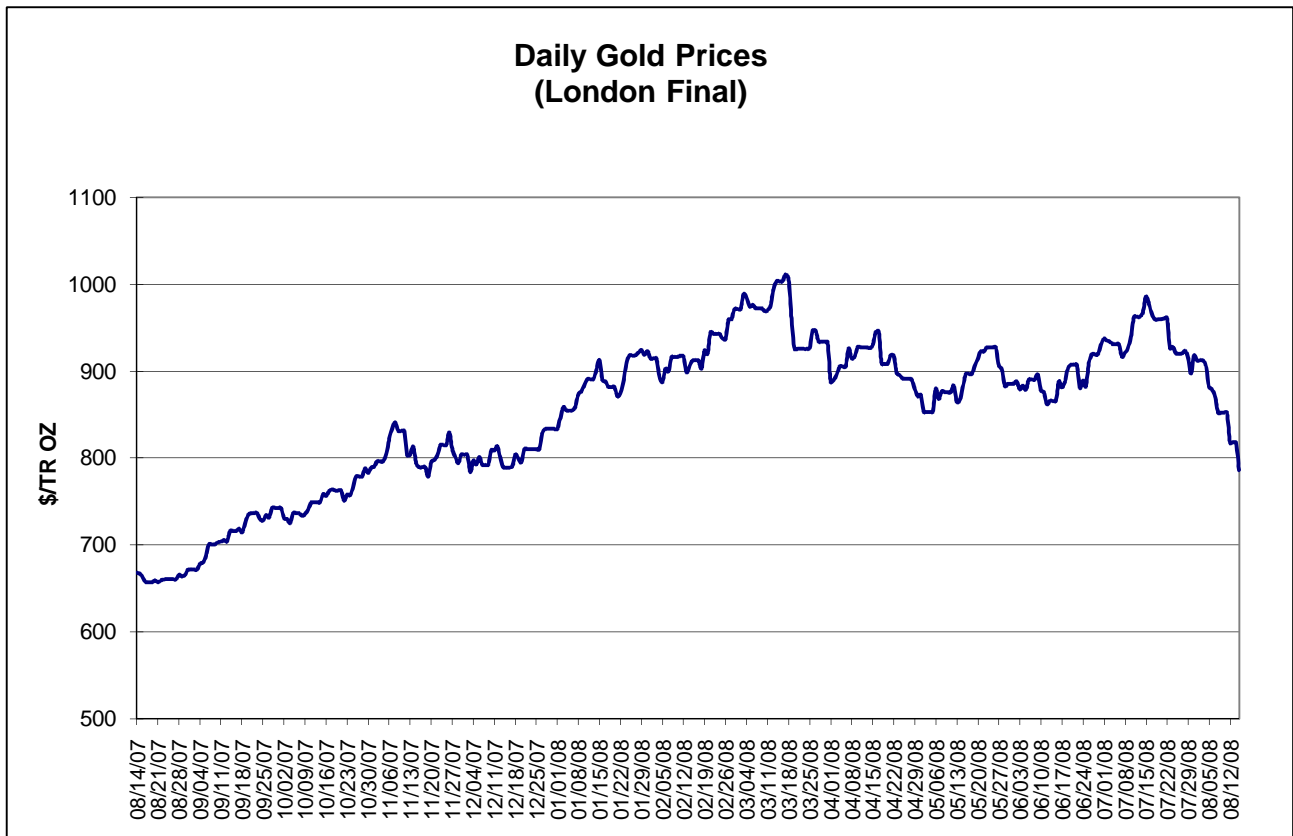
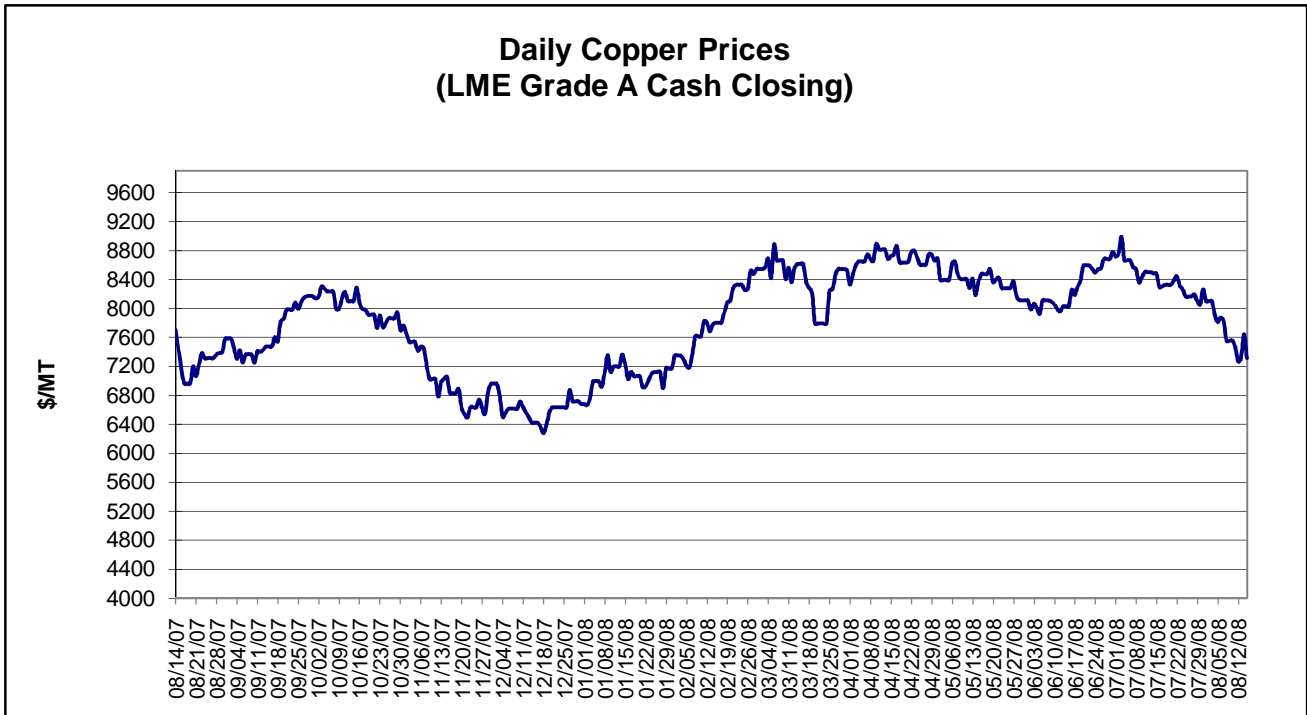


Monthly Raw Steel Production



*Steel in the first solid state after melting suitable for further processing or sale, including ingots, steel for castings and strand or pressure cast blooms, slabs, or other product forms.

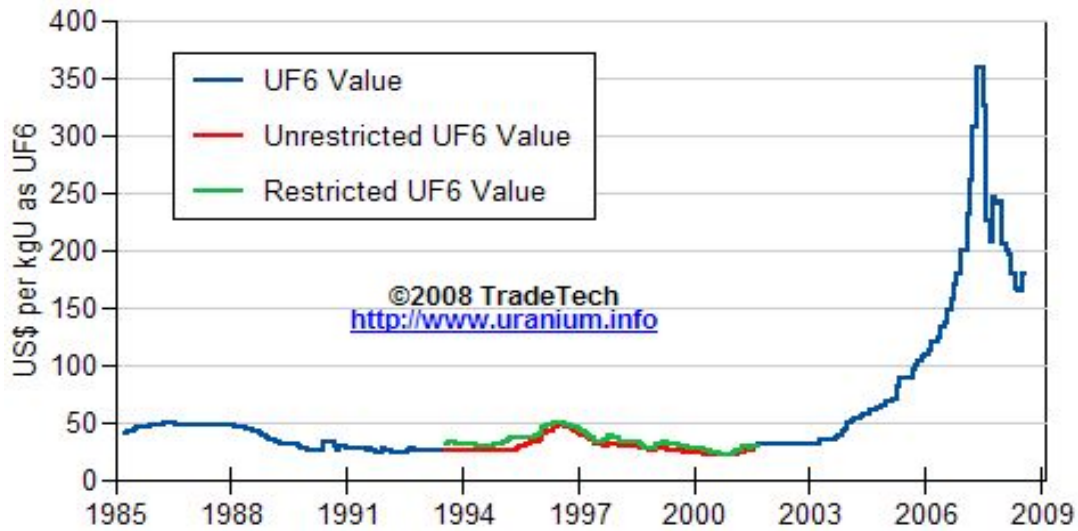
** Based on tonnage capability to produce raw steel for a sustained full order book.



Data reflect closings on weekends and holidays.

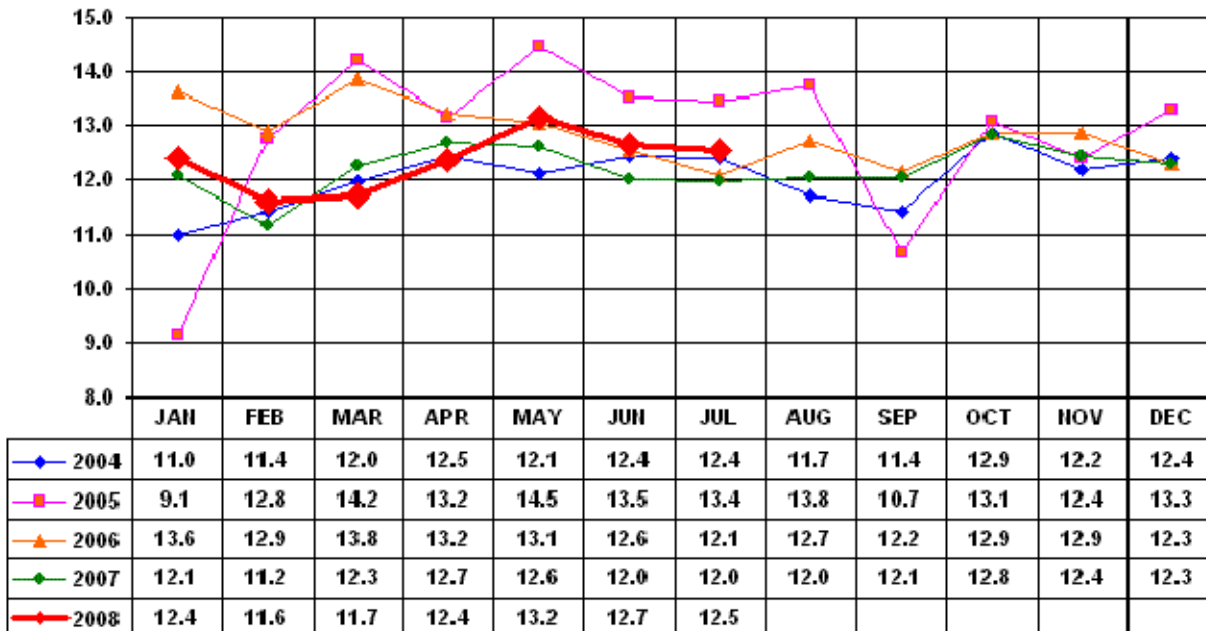
Source: Platts Metals Week

Trade Tech's Uranium (UF6) Monthly Spot Prices (US\$/kg as UF6)



Source: Trade Tech, Uranium Info Website – <http://www.uranium.info>

Coal and Coke Monthly Tonnage Indicator for Internal U.S. Waterways



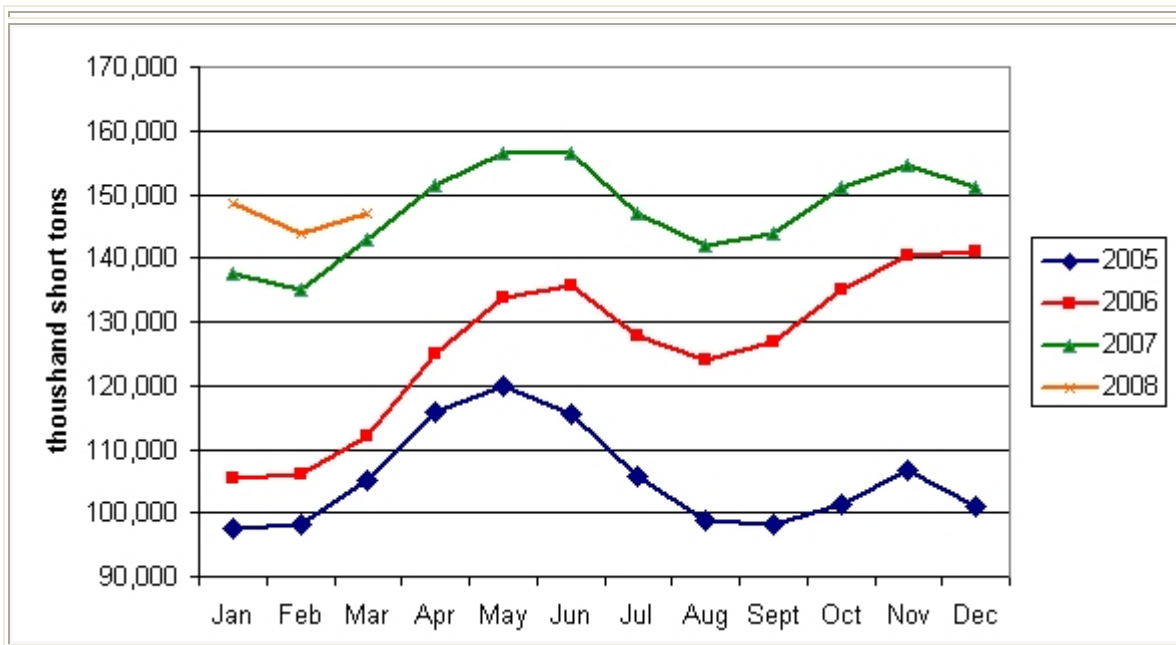
Source: U.S. Army Corps of Engineers, Waterborne Commerce Statistics Center

EIA Weekly Spot Coal Prices

Average Spot Coal Prices (Dollars per Short Ton)					
Week Ended	Central Appalachia 12,500 Btu, 1.2 SO2	Northern Appalachia 13,000 Btu, <3.0 SO2	Illinois Basin 11,800 Btu, 5.0 SO2	Powder River Basin 8,800 Btu, 0.8 SO2	Uinta Basin 11,700 Btu, 0.8 SO2
18-July-08	\$139.30	\$138.00	\$70.00	\$14.00	\$56.00
25-July-08	\$140.00	\$149.00	\$71.00	\$12.50	\$62.00
01-Aug-08	\$140.00	\$149.00	\$71.00	\$12.50	\$62.00
08-Aug-08	\$140.00	\$146.00	\$95.00	\$12.50	\$62.00
15-Aug-08	\$140.00	\$145.00	\$93.00	\$12.50	\$62.00

Source: Energy Information Administration (from Platts *Coal Outlook*, "Weekly Price Survey")

EIA Electric Power Sector Coal Stocks



Source: Energy Information Administration

USGS Production of Selected Mineral Commodities	2008 First Quarter	2007 First Quarter	Percent Change
Aluminum, secondary (000 Mt.)	240.0	243.0	-1%
Cement (Mil. Mt.)	17.2	18.0	-4%
Gypsum (Mil. Mt.) *	4.7	5.4	-13%
Iron Ore (Mil. Mt.)	12.9	11.4	13%
Phosphate rock (Mil. Mt.)	7.6	7.1	7%
Sand & gravel, construction (Mil. Mt.)	184.0	194.0	-5%
Soda ash (Mil. Mt.)	2.8	2.7	4%
Stone, crushed (Mil. Mt.)	280.0	263.0	6%
Zinc (000 Mt.)	207.0	181.0	14%

Source: U.S. Geological Survey, Mineral Industry Surveys, *U.S. Production of Selected Mineral Commodities in the First Quarter 2008*

* Revised June 16, 2008. Note - data are preliminary.