
National Mining Association

Weekly Statistical Summary

August 24, 2007 Edition
(Data for Week Ending August 18, 2007)

Prepared by
National Mining Association



Suite 500 East, 101 Constitution Avenue, NW
Washington, DC, 20001
Phone (202) 463-2600
Visit us at <http://www.nma.org>

NMA Weekly Statistical Summary

Vol. 45, No. 33
Dated 08/24/07

PRODUCTION, CONSUMPTION & TRADE						
	Week Ended			Cumulative Jan 1 to		
	08/18/07	08/19/06	% Chng	08/18/07	08/19/06	% Chng
EIA Coal Production (000 Tons):						
Week Ended/Year to Date	22,600	22,417	0.8%	719,894	736,076	-2.2%
52 Weeks Ended	1,143,560	1,148,867	-0.5%			
Month Ended -- July						
	July 07/06		% Chng	Jan - July 07/06		% Chng
	93,684	94,985	-1.4%	661,873	676,484	-2.2%
MONTH ENDED AND CUMULATIVE NUMBERS ARE PRELIMINARY AND SUBJECT TO CHANGE						
DOC Bituminous Coal Trade (000 Tons)						
Exports:	June 07/06			Jan - June 07/06		
			% Chng			% Chng
Metallurgical	2,893	2,496	15.9%	14,642	13,721	6.7%
Steam	2,195	1,847	18.8%	10,993	9,335	17.8%
Imports:	3,027	2,185	38.5%	17,191	16,914	1.6%
Week Ended						
	08/18/07	08/19/06	% Chng	Cumulative Jan 1 to		
				08/18/07	08/19/06	% Chng
EEl Electric Output (Mil. Kwh)	94,455	88,941	6.2%	2,602,891	2,557,108	1.8%
AISI Raw Steel Output (000 Tons)	2,078	2,086	-0.4%	66,812	70,717	-5.5%
EIA U.S. PETROLEUM DATA						
4-Week Averages 000 Barrels per Day						
Week Ending						
	08/17/07	08/17/06	% Chng	Cumulative Daily Averages		
				2007	2006	% Chng
PETROLEUM SUPPLY:						
Domestic Crude	5,165	5,162	0.1	5,183	5,100	1.6
Net Imports (Incl. SPR)	10,189	10,358	-1.6	10,112	10,052	0.6
SPR Stocks W/D or Added	0	0	--	-7	-14	--
Other Stocks W/D or added	497	69	--	-146	-33	--
Natural Gas Liquids Prod.	2,446	2,306	6.1	2,378	2,186	8.8



NMA

THE AMERICAN RESOURCE

National Mining Association Web Site: [http:// www.nma.org](http://www.nma.org)

EIA Estimated Weekly U.S. Coal Production Overview (Thousand Short Tons)

Coal-Producing Region and State	Week Ended			Year to Date			52 Weeks Ended		
	8/18/2007	8/11/2007	8/19/2006	8/18/2007	8/18/2006	Percent Change	8/18/2007	8/19/2006	Percent Change
Alabama	406	387	351	12,844	12,438	3.3	19,426	19,621	-1.0
Alaska	28	26	25	977	889	9.9	1,513	1,304	16.0
Arizona	156	149	167	4,995	5,163	-3.3	8,048	9,311	-13.6
Arkansas	1	1	s	30	11	172.2	42	12	241.4
Colorado	775	739	731	22,642	22,267	1.7	36,620	35,764	2.4
Illinois	654	624	655	21,937	20,425	7.4	33,676	31,412	7.2
Indiana	721	688	689	22,687	22,496	0.9	35,910	35,166	2.1
Kansas	9	9	9	280	224	24.9	482	285	68.8
Kentucky Total	2,347	2,239	2,290	73,958	78,197	-5.4	116,043	121,509	-4.5
Eastern	1,761	1,680	1,775	55,342	60,896	-9.1	87,480	94,442	-7.4
Western	586	559	515	18,616	17,301	7.6	28,562	27,067	5.5
Louisiana	57	90	90	1,893	2,524	-25.0	3,475	4,042	-14.0
Maryland	105	100	120	2,586	3,661	-29.3	3,978	5,468	-27.3
Mississippi	80	80	85	2,359	2,465	-4.3	3,682	3,786	-2.7
Missouri	6	6	4	174	296	-41.0	273	533	-48.7
Montana	817	780	833	25,514	25,846	-1.3	41,391	40,878	1.3
New Mexico	510	487	489	15,158	16,067	-5.7	24,993	26,869	-7.0
North Dakota	533	509	618	17,843	18,745	-4.8	29,510	30,138	-2.1
Ohio	484	462	436	14,780	14,499	1.9	22,987	23,570	-2.5
Oklahoma	41	39	37	1,188	1,326	-10.4	1,861	2,015	-7.7
Pennsylvania Total	1,242	1,185	1,197	40,987	42,758	-4.1	64,296	67,663	-5.0
Anthracite	28	27	31	931	964	-3.5	1,481	1,610	-8.0
Bituminous	1,214	1,158	1,166	40,056	41,794	-4.2	62,816	66,053	-4.9
Tennessee	57	55	55	1,794	1,817	-1.3	2,781	2,962	-6.1
Texas	931	889	962	27,503	28,504	-3.5	44,422	46,215	-3.9
Utah	471	450	453	15,025	16,499	-8.9	24,533	25,442	-3.6
Virginia	583	556	573	18,289	19,239	-4.9	28,896	29,083	-0.6
Washington	0	0	53	0	1,844	-100.0	736	3,623	-79.7
West Virginia Total	2,999	2,860	2,859	97,011	98,442	-1.5	150,348	153,543	-2.1
Northern	929	886	765	29,579	28,166	5.0	44,083	43,776	0.7
Southern	2,070	1,975	2,094	67,432	70,276	-4.0	106,265	109,767	-3.2
Wyoming	8,585	8,856	8,637	277,440	279,434	-0.7	443,640	428,653	3.5
Appalachian Total	7,637	7,285	7,365	243,633	253,752	-4.0	380,192	396,352	-4.1
Interior Total	3,086	2,984	3,046	96,667	95,571	1.1	152,384	150,534	1.2
Western Total	11,876	11,995	12,006	379,594	386,754	-1.9	610,983	601,981	1.5
East of Miss. River	9,679	9,236	9,309	309,232	316,439	-2.3	482,023	493,783	-2.4
West of Miss. River	12,921	13,028	13,108	410,662	419,637	-2.1	661,537	655,084	1.0
Bituminous and Lignite	22,572	22,238	22,386	718,963	735,112	-2.2	1,142,079	1,147,257	-0.5
Anthracite	28	27	31	931	964	-3.5	1,481	1,610	-8.0
U.S. Total	22,600	22,264	22,417	719,894	736,076	-2.2	1,143,560	1,148,867	-0.5
Railroad Cars Loaded	147,875	144,619	147,683	4,646,504	4,711,232	-1.4	7,390,629	7,322,842	0.9

Source: Energy Information Administration



Volume 75 No. 33

OUTPUT FOR WEEK ENDED - Aug 18, 2007

Aug 22, 2007

The net available amount of electric energy distributed by the Total Electric Utility Industry+ for the week ended Saturday, **Aug 18, 2007** was **94,455** gigawatthours (GWh), according to the Edison Electric Institute. This is equivalent to **189** on the weekly electric output index.

WEEKLY ELECTRIC OUTPUT BY GEOGRAPHIC DIVISION
(48 CONTIGUOUS STATES)

	Week Ended August 18		52 Weeks Ended August 18	
	GWh Output	% Increase Over Corresponding Week of 2006	GWh Output	% Increase Over Corresponding Period of 2006
New England	2,784	2.4	132,276	-1.5
Mid-Atlantic	10,077	3.0	449,822	-0.3
Central Industrial	16,055	6.4	709,242	0.8
West Central	7,949	7.6	347,581	0.2
Southeast	25,999	6.9	1,086,760	0.7
South Central	15,051	-2.0	591,454	-1.4
Rocky Mountain	6,844	15.0	268,738	3.8
Pacific Northwest	2,796	6.0	156,666	3.8
Pacific Southwest	6,900	21.4	292,111	0.1
Total United States	94,455	6.2	4,034,651	0.5

WEEKLY ELECTRIC OUTPUT IN PREVIOUS WEEKS--GWh

Week Ended	2007	Week Ended	2006	% Inc. (07/06)	52 Weeks Ended	2007	% Inc. (07/06)
Jul 28	86,636	Jul 29	93,102	-6.9	Jul 28	4,029,876	0.4
Aug 04	93,540	Aug 05	98,583	-5.1	Aug 04	4,024,833	0.2
Aug 11	96,955	Aug 12	92,651	4.6	Aug 11	4,029,137	0.3
Aug 18	94,455	Aug 19	88,941	6.2	Aug 18	4,034,651	0.5
Aug 18	2,602,891	Aug 19	2,557,108	1.8	YEAR TO DATE, FIRST 33 WEEKS		

WEEKLY ELECTRIC OUTPUT INDEX--TOTAL U.S.*
SEASONALLY ADJUSTED 1982 = 100

Week Ended	2007	Week Ended	2006	Week Ended	2005
Jul 28	171	Jul 29	187	Jul 30	181
Aug 04	183	Aug 05	198	Aug 06	182
Aug 11	190	Aug 12	186	Aug 13	180
Aug 18	189	Aug 19	179	Aug 20	178

* Excludes Alaska and Hawaii

+ Includes investor-owned companies, cooperatives and government-owned utilities.

Copyright © 2007 Edison Electric Institute. All rights reserved.

WEEKLY ELECTRIC OUTPUT BY GEOGRAPHIC DIVISION (48 CONTIGUOUS STATES)

	Week Ended			NMA CUMULATIVE JANUARY 1 to			52 Weeks Ended		
	18-Aug 2007	19-Aug 2006	% Increase Over Corresponding Week of 2006	18-Aug 2007	19-Aug 2006	% Increase Over Corresponding Week of 2006	18-Aug 2007	19-Aug 2006	% Increase Over Corresponding Week of 2006
	GWh Output	GWh Output		GWh Output	GWh Output		GWh Output	GWh Output	
New England	2,784	2,720	2.4%	86,017	85,565	0.5%	132,276	134,311	-1.5%
Mid-Atlantic	10,077	9,785	3.0%	293,570	287,497	2.1%	449,822	451,004	-0.3%
Central Industrial	16,055	15,092	6.4%	460,511	446,156	3.2%	709,242	703,439	0.8%
West Central	7,949	7,387	7.6%	226,199	222,767	1.5%	347,581	346,854	0.2%
Southeast	25,999	24,323	6.9%	699,755	685,085	2.1%	1,086,760	1,078,874	0.7%
South Central	15,051	15,363	-2.0%	380,800	387,716	-1.8%	591,454	600,109	-1.4%
Rocky Mountain	6,844	5,950	15.0%	171,636	163,522	5.0%	268,738	258,851	3.8%
Pacific Northwest	2,796	2,636	6.1%	99,559	94,267	5.6%	156,666	150,946	3.8%
Pacific Southwest	<u>6,900</u>	<u>5,685</u>	21.4%	<u>184,843</u>	<u>184,536</u>	0.2%	<u>292,111</u>	<u>291,884</u>	0.1%
Total United States *	94,455	88,941	6.2%	2,602,890	2,557,111	1.8%	4,034,650	4,016,272	0.5%

Notes: EEI output data are an estimate of electricity load made available for distribution derived as weekly net generation + purchases from non-utilities + net imports - exports - sales for resale. It is not meant to be a measure of electricity generation for the U.S. EEI survey data represent the majority of national distribution (large utilities, large government power projects, some independent and large municipal power projects). The remaining segment of the industry (smaller producers) is estimated. Non-utility generation is captured via direct sales to utilities.

* Excludes Alaska and Hawaii

** Less than one-tenth of one percent

SOURCE: Edison Electric Institute (EEI), *Weekly Electric Output Report*.

AMERICAN IRON AND STEEL INSTITUTE
 1140 Connecticut Avenue, Suite 705
 Washington, D.C. 20036

August 20, 2007

ESTIMATED WEEKLY RAW STEEL* PRODUCTION

<u>Period</u>	<u>Thousand Net Tons</u>	<u>Percent Change from Previous Period</u>	<u>Percent Capacity Utilization**</u>	<u>Production by District</u>	
				<u>Week Ending</u>	
				<u>Aug 18</u>	<u>Aug 11</u>
<u>Week Ending</u>					
Aug 18, 2007	2,078	1.7	87.8	138	141
Aug 18, 2006	2,086	-0.3	88.7	202	206
Aug 11, 2007	2,043	-0.7	86.3	103	112
				120	123
				544	512
				249	240
				634	621
				88	88
				2078	2043
<u>Year-to-Date+</u>					
Aug 18, 2007	66,812	-5.5	85.1		
Aug 18, 2006	70,717	-	90.0		

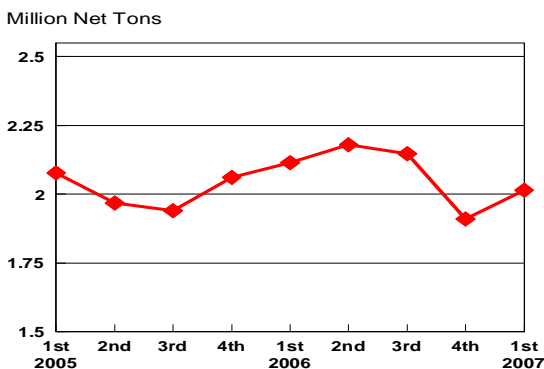
*Raw steel production tonnage included in this report is estimated based on a sampling of steel producers. Therefore, this report should be used primarily to assess production trends. The AISI production report "AIS 7," produced monthly and available by subscription, provides a more accurate summary of steel production based on data supplied by companies representing approximately 75% of U.S. production capacity.

+Includes revisions for previous months

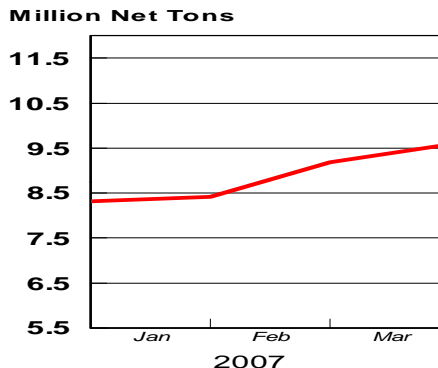
NOTE: Capacity for the First Quarter 2007 is approximately 31.2 million net tons vs 30.5 million net tons for the same period last year, and 30.7 million tons for the fourth quarter of 2006.

Capacity -	2003 approx.	2004	2005	2006	2007
	2.3 million tons/week	2.2	2.3	2.4	2.4

Average Weekly Raw Steel Production

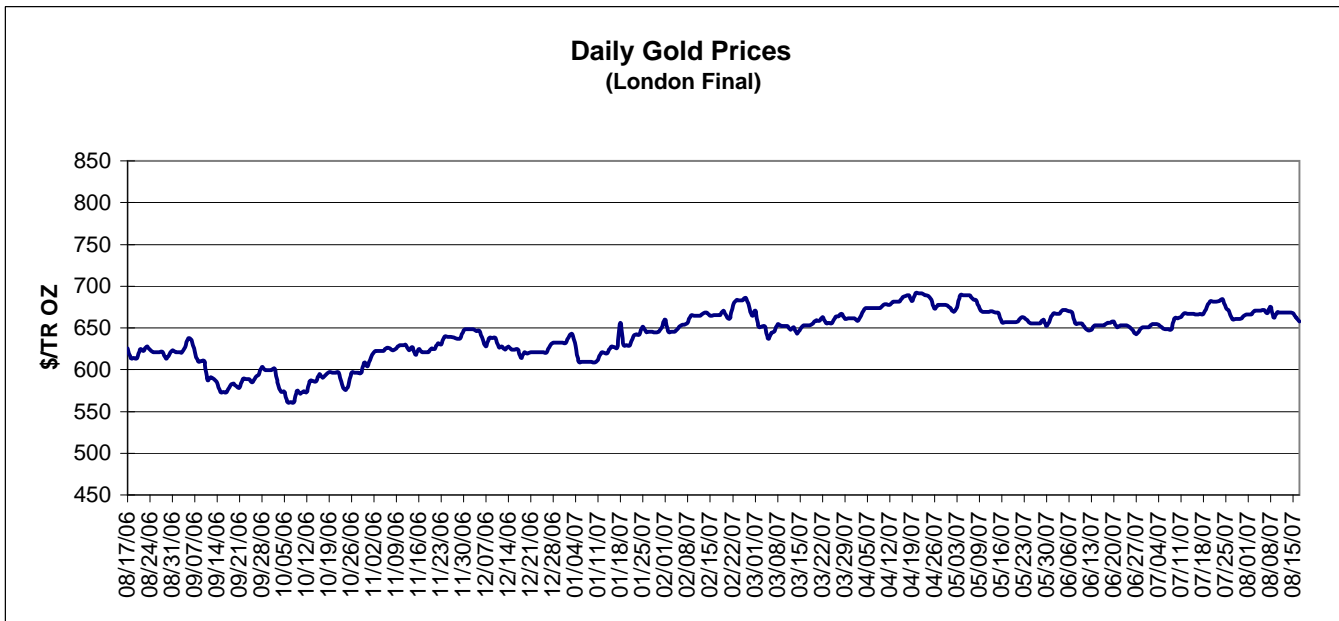
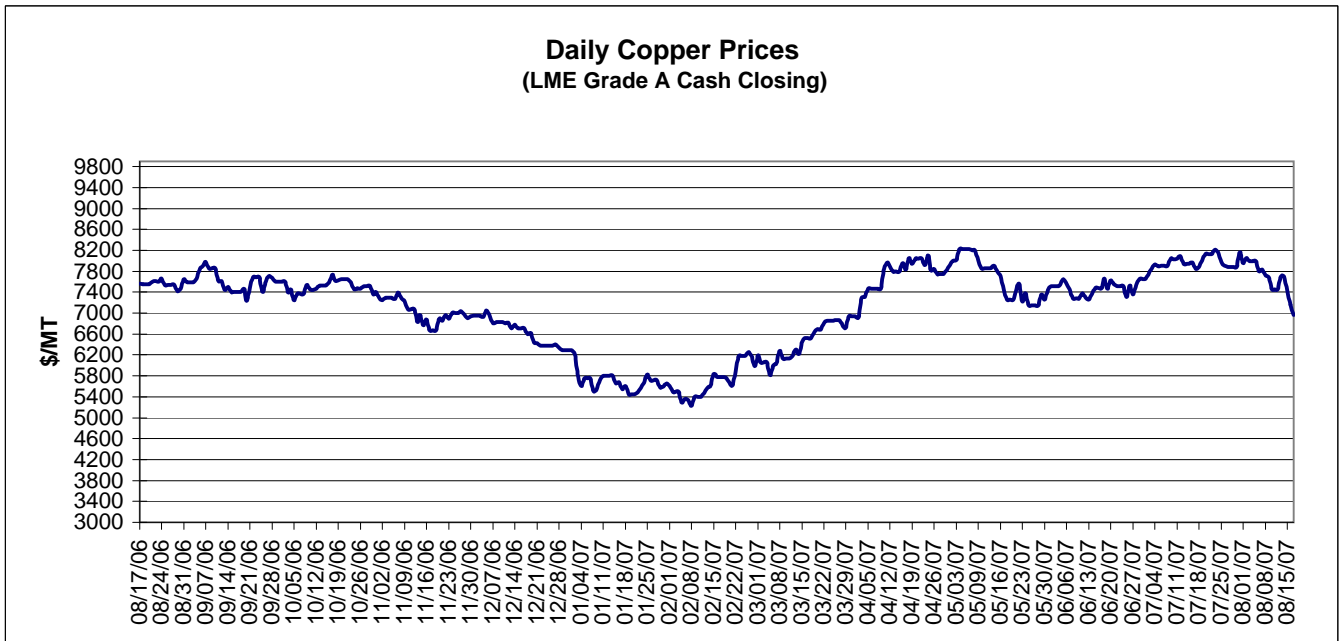


MONTHLY RAW STEEL PRODUCTION



*Steel in the first solid state after melting suitable for further processing or sale, including ingots, steel for castings and strand or pressure cast blooms, slabs, or other product forms.

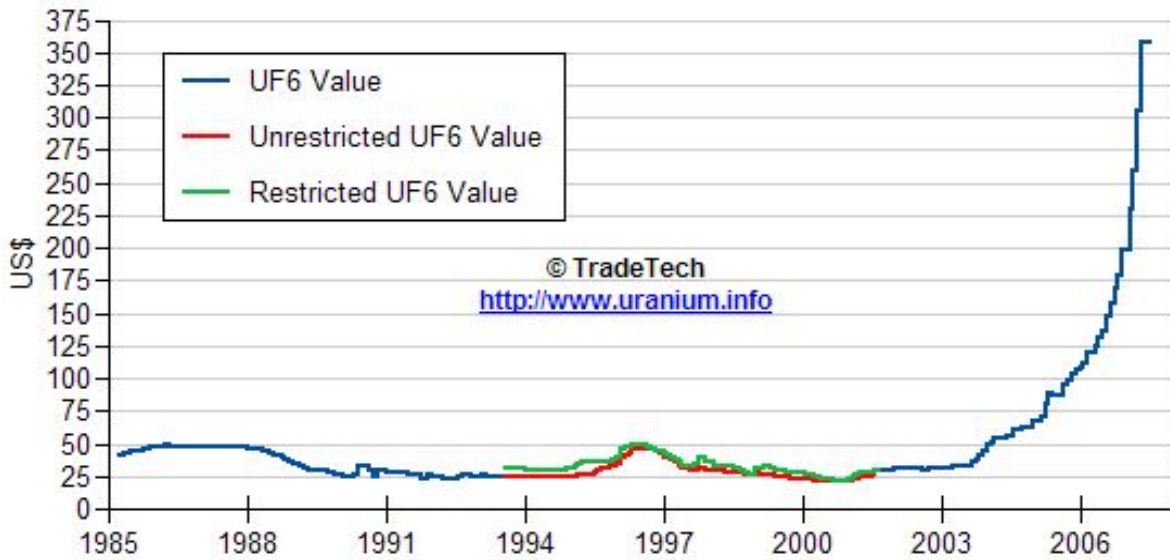
** Based on tonnage capability to produce raw steel for a sustained full order book.



Data reflect closings on weekends and holidays.

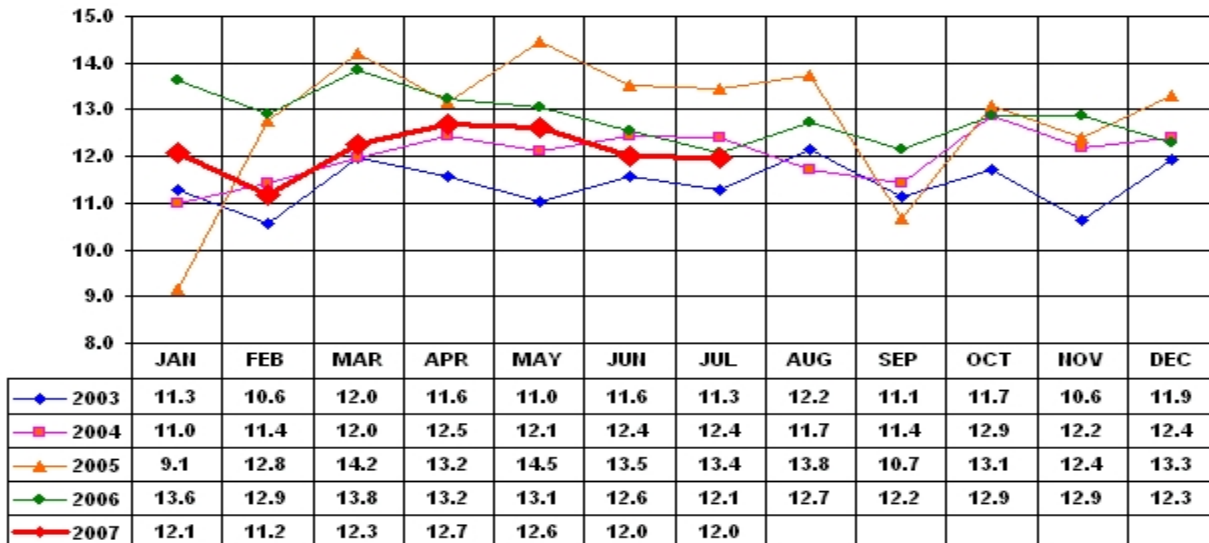
Source: Platts Metals Week

Trade Tech's Uranium (UF6) Monthly Spot Prices (US\$/kg as UF6)



Source: Trade Tech, Uranium Info Website – <http://www.uranium.info>

Coal and Coke Monthly Tonnage Indicator for Internal U.S. Waterways



Source: U.S. Army Corps of engineers, Waterborne Commerce Statistics Center