

---

National Mining Association

# Weekly Statistical Summary

August 3, 2007 Edition  
(Data for Week Ending July 28, 2007)

Prepared by  
National Mining Association



Suite 500 East, 101 Constitution Avenue, NW  
Washington, DC, 20001  
Phone (202) 463-2600  
Visit us at <http://www.nma.org>

# NMA Weekly Statistical Summary

Vol. 45, No. 30  
Dated 08/03/07

PRODUCTION, CONSUMPTION & TRADE						
	Week Ended			Cumulative Jan 1 to		
	07/28/07	07/29/06	% Chng	07/28/07	07/29/06	% Chng
<b>EIA Coal Production (000 Tons):</b>						
Week Ended/Year to Date	22,337	22,432	-0.4%	652,528	669,353	-2.5%
52 Weeks Ended	1,142,906	1,147,724	-0.4%			
<b>Month Ended -- June</b>						
	June 07/06		% Chng	Jan - June 07/06		% Chng
	94,813	97,141	-2.4%	568,189	581,498	-2.3%
MONTH ENDED AND CUMULATIVE NUMBERS ARE PRELIMINARY AND SUBJECT TO CHANGE						
<b>DOC Bituminous Coal Trade (000 Tons)</b>						
<b>Exports:</b>	May 07/06			Jan - May 07/06		
			% Chng			% Chng
Metallurgical	2,626	2,613	0.5%	11,749	11,225	4.7%
Steam	2,086	2,158	-3.3%	8,798	7,489	17.5%
<b>Imports:</b>	2,691	2,742	-1.9%	14,164	14,729	-3.8%
<b>Week Ended</b>						
	07/28/07	07/29/06	% Chng	Cumulative Jan 1 to		
				07/28/07	07/29/06	% Chng
<b>EEl Electric Output (Mil. Kwh)</b>	86,636	93,102	-6.9%	2,317,941	2,276,933	1.8%
<b>AISI Raw Steel Output (000 Tons)</b>	2,078	2,087	-0.4%	60,633	64,459	-5.9%
<b>EIA U.S. PETROLEUM DATA</b>						
4-Week Averages 000 Barrels per Day						
<b>Week Ending</b>						
	07/27/07	07/27/06	% Chng	Cumulative Daily Averages		
				2007	2006	% Chng
<b>PETROLEUM SUPPLY:</b>						
Domestic Crude	5,197	5,175	0.4	5,178	5,094	1.6
Net Imports (Incl. SPR)	10,213	10,176	0.4	10,125	10,013	1.1
SPR Stocks W/D or Added	0	2	--	-8	-16	--
Other Stocks W/D or added	340	167	--	-161	-40	--
Natural Gas Liquids Prod.	2,396	2,413	-0.7	2,344	2,178	7.6



**NMA**

THE AMERICAN RESOURCE

National Mining Association Web Site: [http:// www.nma.org](http://www.nma.org)

### EIA Estimated Weekly U.S. Coal Production Overview (Thousand Short Tons)

Coal-Producing Region and State	Week Ended			Year to Date		Percent Change	52 Weeks Ended		Percent Change
	7/28/2007	7/21/2007	7/29/2006	7/28/2007	7/28/2006		7/28/2007	7/29/2006	
Alabama	390	384	348	11,656	11,393	2.3	19,282	19,750	-2.4
Alaska	27	26	24	896	816	9.9	1,506	1,280	17.6
Arizona	150	148	165	4,537	4,667	-2.8	8,087	9,496	-14.8
Arkansas	1	1	s	28	10	187.9	41	11	269.9
Colorado	745	733	725	20,373	20,090	1.4	36,528	35,902	1.7
Illinois	629	618	650	20,022	18,474	8.4	33,713	31,249	7.9
Indiana	693	681	683	20,576	20,444	0.6	35,850	35,084	2.2
Kansas	9	9	9	253	196	29.1	483	270	79.1
<b>Kentucky Total</b>	<b>2,256</b>	<b>2,218</b>	<b>2,272</b>	<b>67,087</b>	<b>71,375</b>	<b>-6.0</b>	<b>115,993</b>	<b>121,479</b>	<b>-4.5</b>
Eastern	1,693	1,665	1,761	50,186	55,608	-9.8	87,612	94,432	-7.2
Western	563	554	511	16,901	15,767	7.2	28,381	27,048	4.9
Louisiana	104	86	100	1,685	2,276	-26.0	3,513	4,072	-13.7
Maryland	101	99	119	2,279	3,303	-31.0	4,028	5,394	-25.3
Mississippi	67	63	86	2,114	2,270	-6.9	3,633	3,818	-4.8
Missouri	6	6	4	157	285	-45.0	266	557	-52.3
Montana	786	772	827	23,121	23,364	-1.0	41,481	40,932	1.3
New Mexico	490	482	485	13,664	14,611	-6.5	24,956	27,212	-8.3
North Dakota	512	504	613	16,282	16,903	-3.7	29,790	30,100	-1.0
Ohio	466	458	432	13,361	13,201	1.2	22,867	23,707	-3.5
Oklahoma	39	39	37	1,068	1,216	-12.1	1,851	2,010	-7.9
<b>Pennsylvania Total</b>	<b>1,194</b>	<b>1,174</b>	<b>1,188</b>	<b>37,351</b>	<b>39,192</b>	<b>-4.7</b>	<b>64,226</b>	<b>67,862</b>	<b>-5.4</b>
Anthracite	27	26	30	850	873	-2.7	1,490	1,611	-7.5
Bituminous	1,167	1,148	1,157	36,501	38,319	-4.7	62,736	66,252	-5.3
Tennessee	55	54	54	1,627	1,654	-1.7	2,777	2,989	-7.1
Texas	895	880	954	24,775	25,640	-3.4	44,560	46,026	-3.2
Utah	453	446	450	13,645	15,149	-9.9	24,503	25,505	-3.9
Virginia	561	551	569	16,581	17,532	-5.4	28,896	29,017	-0.4
Washington	0	0	53	0	1,685	-100.0	894	3,804	-76.5
<b>West Virginia Total</b>	<b>2,882</b>	<b>2,834</b>	<b>2,837</b>	<b>88,232</b>	<b>89,924</b>	<b>-1.9</b>	<b>150,088</b>	<b>153,811</b>	<b>-2.4</b>
Northern	893	878	759	26,861	25,886	3.8	43,645	43,910	-0.6
Southern	1,990	1,956	2,078	61,371	64,038	-4.2	106,442	109,901	-3.1
Wyoming	8,826	8,086	8,746	251,158	253,683	-1.0	443,096	426,387	3.9
Appalachian Total	7,342	7,218	7,308	221,272	231,808	-4.5	379,776	396,962	-4.3
Interior Total	3,006	2,937	3,035	87,580	86,578	1.2	152,291	150,144	1.4
Western Total	11,989	11,196	12,089	343,676	350,968	-2.1	610,839	600,618	1.7
<b>East of Miss. River</b>	<b>9,294</b>	<b>9,135</b>	<b>9,239</b>	<b>280,885</b>	<b>288,763</b>	<b>-2.7</b>	<b>481,353</b>	<b>494,161</b>	<b>-2.6</b>
<b>West of Miss. River</b>	<b>13,043</b>	<b>12,217</b>	<b>13,193</b>	<b>371,643</b>	<b>380,590</b>	<b>-2.4</b>	<b>661,553</b>	<b>653,564</b>	<b>1.2</b>
Bituminous and Lignite	22,310	21,325	22,401	651,679	668,480	-2.5	1,141,416	1,146,114	-0.4
Anthracite	27	26	30	850	873	-2.7	1,490	1,611	-7.5
<b>U.S. Total</b>	<b>22,337</b>	<b>21,351</b>	<b>22,432</b>	<b>652,528</b>	<b>669,353</b>	<b>-2.5</b>	<b>1,142,906</b>	<b>1,147,724</b>	<b>-0.4</b>
Railroad Cars Loaded	146,188	137,472	144,703	4,207,105	4,274,623	-1.6	7,387,839	7,302,566	1.2

Source: Energy Information Administration



Volume 75 No. 30

**OUTPUT FOR WEEK ENDED - Jul 28, 2007**

Aug 01, 2007

The net available amount of electric energy distributed by the Total Electric Utility Industry+ for the week ended Saturday, Jul 28, 2007 was 86,636 gigawatthours (GWh), according to the Edison Electric Institute. This is equivalent to 171 on the weekly electric output index.

**WEEKLY ELECTRIC OUTPUT BY GEOGRAPHIC DIVISION**  
(48 CONTIGUOUS STATES)

	Week Ended July 28		52 Weeks Ended July 28	
	GWh Output	% Increase Over Corresponding Week of 2006	GWh Output	% Increase Over Corresponding Period of 2006
New England	2,922	-6.9	132,244	-1.8
Mid-Atlantic	9,859	-7.9	450,292	-0.2
Central Industrial	14,406	-10.2	708,026	0.7
West Central	8,046	-4.0	346,836	0.2
Southeast	22,713	-6.1	1,085,248	0.7
South Central	13,128	-8.1	592,995	-0.7
Rocky Mountain	6,122	-0.2	267,180	3.6
Pacific Northwest	3,031	6.0	156,181	3.4
Pacific Southwest	6,409	-12.9	290,875	-1.0
Total United States	86,636	-6.9	4,029,876	0.4

**WEEKLY ELECTRIC OUTPUT IN PREVIOUS WEEKS--GWh**

Week Ended	2007	Week Ended	2006	% Inc. (07/06)	52 Weeks Ended	2007	% Inc. (07/06)
Jul 07	81,057	Jul 08	81,685	-0.8	Jul 07	4,045,585	0.9
Jul 14	88,617	Jul 15	89,508	-1.0	Jul 14	4,044,694	0.8
Jul 21	87,961	Jul 22	96,314	-8.7	Jul 21	4,036,342	0.6
Jul 28	86,636	Jul 29	93,102	-6.9	Jul 28	4,029,876	0.4
Jul 28	2,317,941	Jul 29	2,276,933	1.8	YEAR TO DATE, FIRST 30 WEEKS		

**WEEKLY ELECTRIC OUTPUT INDEX--TOTAL U.S.\***  
**SEASONALLY ADJUSTED 1982 = 100**

Week Ended	2007	Week Ended	2006	Week Ended	2005
Jul 07	177	Jul 08	181	Jul 09	171
Jul 14	186	Jul 15	189	Jul 16	178
Jul 21	174	Jul 22	197	Jul 23	187
Jul 28	171	Jul 29	187	Jul 30	181

\* Excludes Alaska and Hawaii

+ Includes investor-owned companies, cooperatives and government-owned utilities.

Copyright © 2007 Edison Electric Institute. All rights reserved.

## WEEKLY ELECTRIC OUTPUT BY GEOGRAPHIC DIVISION (48 CONTIGUOUS STATES)

	Week Ended			NMA CUMULATIVE JANUARY 1 to			52 Weeks Ended		
	28-Jul 2007 GWh Output	29-Jul 2006 GWh Output	% Increase Over Corresponding Week of 2006	28-Jul 2007 GWh Output	29-Jul 2006 GWh Output	% Increase Over Corresponding Week of 2006	28-Jul 2007 GWh Output	29-Jul 2006 GWh Output	% Increase Over Corresponding Week of 2006
<b>New England</b>	2,922	3,139	-6.9%	<b>77,121</b>	<b>76,701</b>	<b>0.5%</b>	132,244	134,629	-1.8%
<b>Mid-Atlantic</b>	9,859	10,703	-7.9%	<b>261,645</b>	<b>255,103</b>	<b>2.6%</b>	450,292	451,235	-0.2%
<b>Central Industrial</b>	14,406	16,047	-10.2%	<b>410,303</b>	<b>397,164</b>	<b>3.3%</b>	708,026	702,992	0.7%
<b>West Central</b>	8,046	8,381	-4.0%	<b>201,489</b>	<b>198,802</b>	<b>1.4%</b>	346,836	346,235	0.2%
<b>Southeast</b>	22,713	24,192	-6.1%	<b>622,038</b>	<b>608,880</b>	<b>2.2%</b>	1,085,248	1,077,569	0.7%
<b>South Central</b>	13,128	14,286	-8.1%	<b>336,968</b>	<b>342,345</b>	<b>-1.6%</b>	592,995	597,244	-0.7%
<b>Rocky Mountain</b>	6,122	6,135	-0.2%	<b>152,007</b>	<b>145,450</b>	<b>4.5%</b>	267,180	257,996	3.6%
<b>Pacific Northwest</b>	3,031	2,859	6.0%	<b>91,226</b>	<b>86,420</b>	<b>5.6%</b>	156,181	151,060	3.4%
<b>Pacific Southwest</b>	<u>6,409</u>	<u>7,360</u>	-12.9%	<u><b>165,143</b></u>	<u><b>166,071</b></u>	<b>-0.6%</b>	<u>290,875</u>	<u>293,682</u>	-1.0%
<b>Total United States *</b>	86,636	93,102	-6.9%	<b>2,317,940</b>	<b>2,276,936</b>	<b>1.8%</b>	4,029,877	4,012,642	0.4%

**Notes:** EEI output data are an estimate of electricity load made available for distribution derived as weekly net generation + purchases from non-utilities + net imports - exports - sales for resale. It is not meant to be a measure of electricity generation for the U.S. EEI survey data represent the majority of national distribution (large utilities, large government power projects, some independent and large municipal power projects). The remaining segment of the industry (smaller producers) is estimated. Non-utility generation is captured via direct sales to utilities.

\* Excludes Alaska and Hawaii

\*\* Less than one-tenth of one percent

SOURCE: Edison Electric Institute (EEI), *Weekly Electric Output Report*.

AMERICAN IRON AND STEEL INSTITUTE  
 1140 Connecticut Avenue, Suite 705  
 Washington, D.C. 20036

July 30, 2007

**ESTIMATED WEEKLY RAW STEEL\* PRODUCTION**

<u>Period</u>	<u>Thousand Net Tons</u>	<u>Percent Change from Previous Period</u>	<u>Percent Capability Utilization**</u>	<u>Production by District</u>		
				<u>Week Ending Jul 28</u>	<u>Week Ending Jul 21</u>	
<b><u>Week Ending</u></b>				North East Coast	148	144
July 28, 2007	2,078	-1.8	87.8	Pgh/Youngstown	207	210
July 28, 2006	2,087	-0.4	88.7	Lake Erie	112	105
July 21, 2007	2,118	-0.2	89.5	Detroit	106	132
				Indiana/Chicago	505	515
				Midwest	253	248
				Southern	662	675
				Western	85	89
				Total	2078	2118
<b><u>Year-to-Date+</u></b>						
July 28, 2007	60,633	-5.9	84.9			
July 28, 2006	64,459	-	90.2			

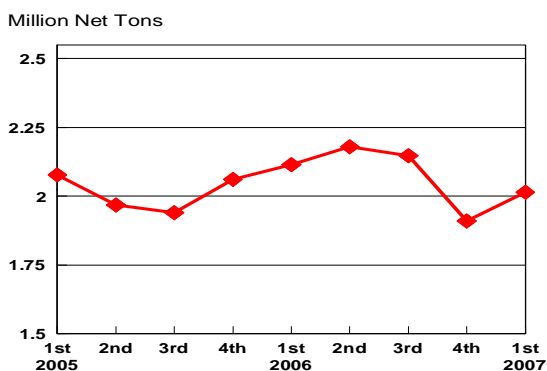
\*Raw steel production tonnage included in this report is estimated based on a sampling of steel producers. Therefore, this report should be used primarily to assess production trends. The AISI production report "AIS 7," produced monthly and available by subscription, provides a more accurate summary of steel production based on data supplied by companies representing approximately 75% of U.S. production capacity.

+Includes revisions for previous months

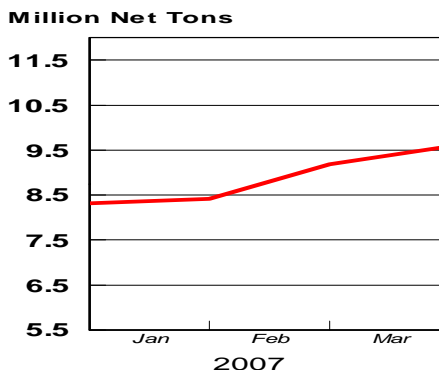
NOTE: Capability for the First Quarter 2007 is approximately 31.2 million net tons vs 30.5 million net tons for the same period last year, and 30.7 million tons for the fourth quarter of 2006.

Capability -	2003 approx.	2003
	2.3 million tons/week	
	2004	2.2
	2005	2.3
	2006	2.4
	2007	2.4

**Average Weekly Raw Steel Production**

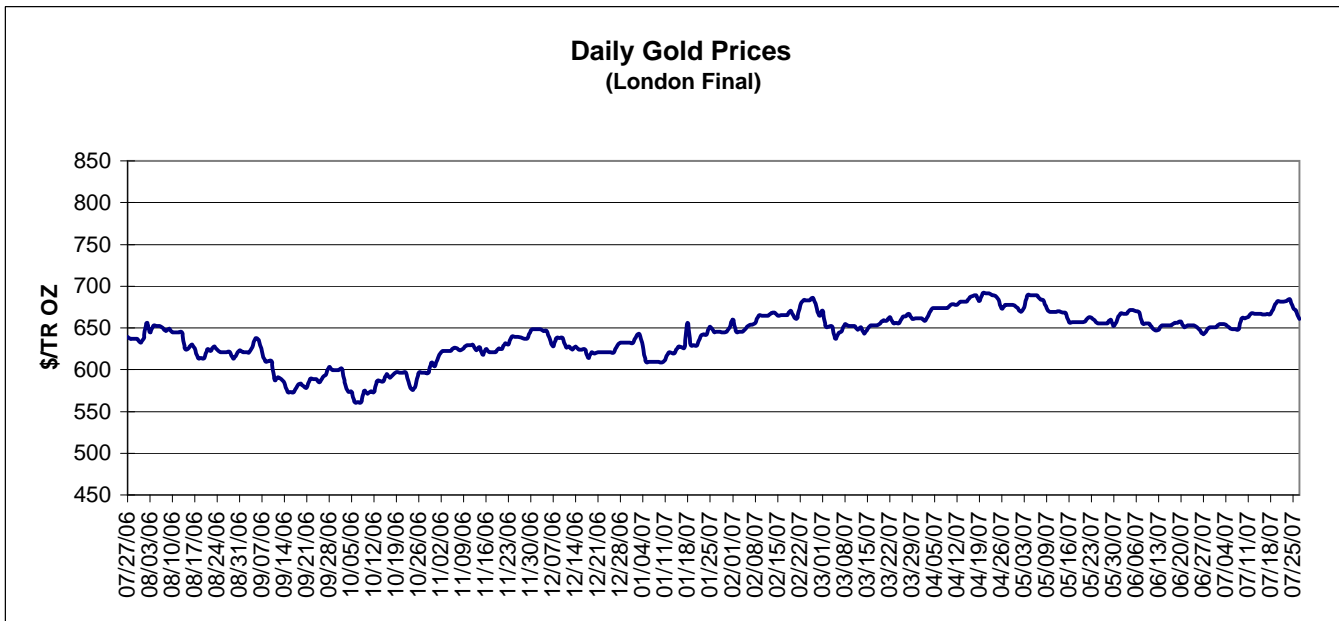
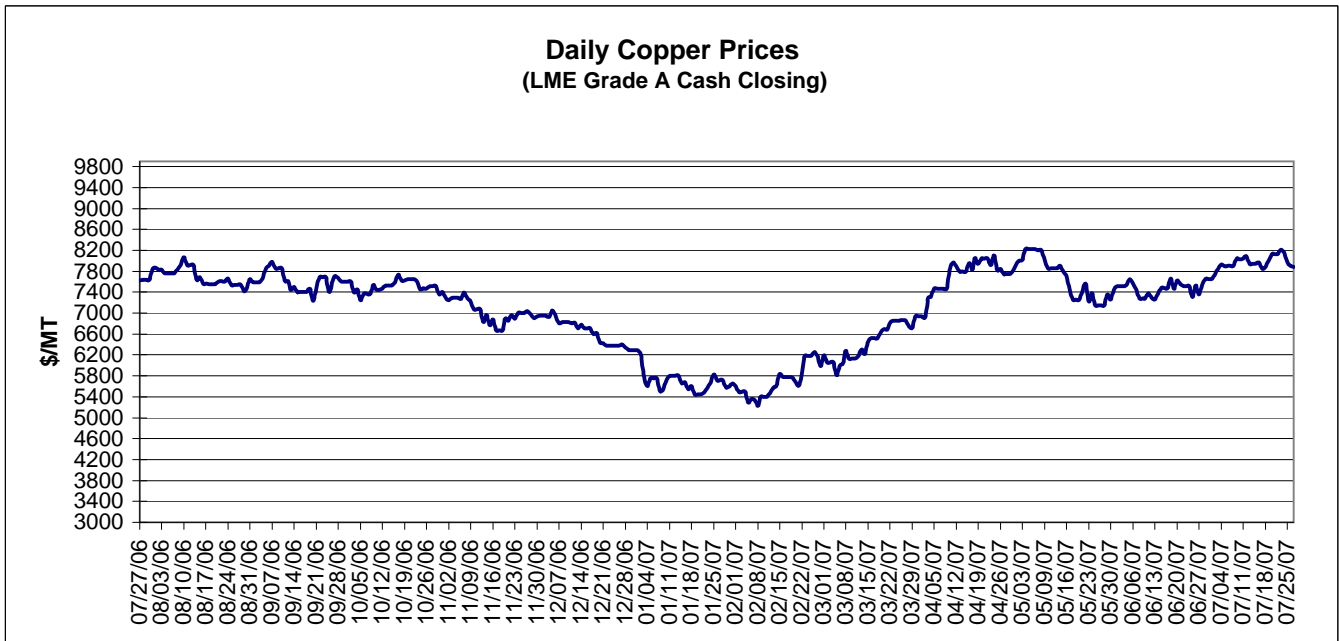


**MONTHLY RAW STEEL PRODUCTION**



\*Steel in the first solid state after melting suitable for further processing or sale, including ingots, steel for castings and strand or pressure cast blooms, slabs, or other product forms.

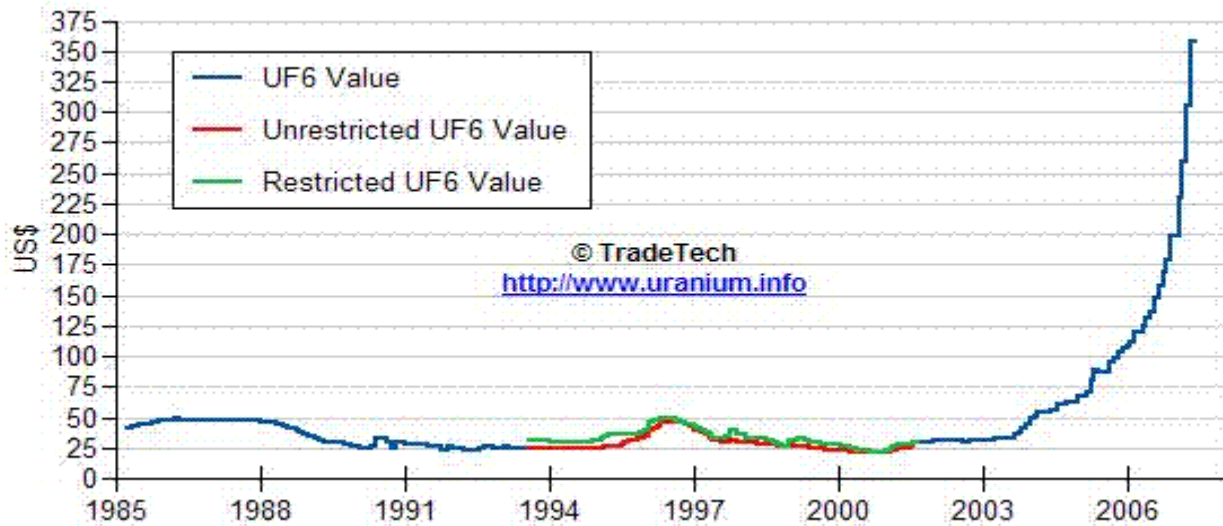
\*\* Based on tonnage capability to produce raw steel for a sustained full order book.



Data reflect closings on weekends and holidays.

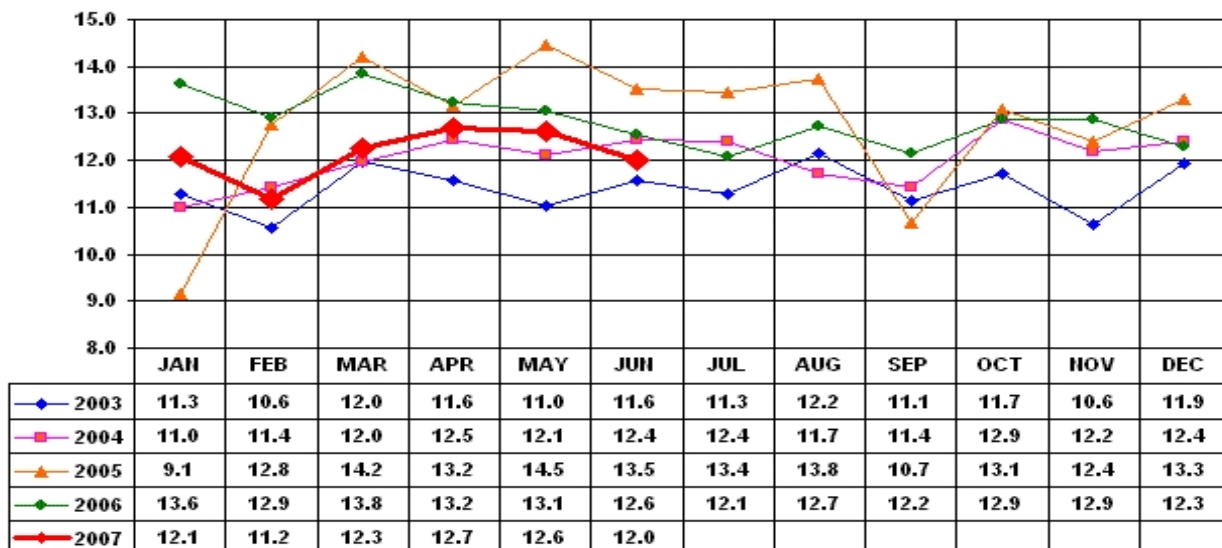
Source: Platts Metals Week

### Trade Tech's Uranium (UF6) Monthly Spot Prices (US\$/kg as UF6)



Source: Trade Tech, Uranium Info Website – <http://www.uranium.info>

### Coal and Coke Monthly Tonnage Indicator for Internal U.S. Waterways



Source: U.S. Army Corps of engineers, Waterborne Commerce Statistics Center