

---

National Mining Association

# Weekly Statistical Summary

August 31, 2007 Edition  
(Data for Week Ending August 25, 2007)

Prepared by  
National Mining Association



Suite 500 East, 101 Constitution Avenue, NW  
Washington, DC, 20001  
Phone (202) 463-2600  
Visit us at <http://www.nma.org>

# NMA Weekly Statistical Summary

Vol. 45, No. 34  
Dated 08/31/07

PRODUCTION, CONSUMPTION & TRADE						
	Week Ended			Cumulative Jan 1 to		
	08/25/07	08/26/06	% Chng	08/25/07	08/26/06	% Chng
<b>EIA Coal Production (000 Tons):</b>						
Week Ended/Year to Date	22,640	22,404	1.1%	742,534	758,472	-2.1%
52 Weeks Ended	1,143,796	1,149,913	-0.5%			
<b>Month Ended -- July</b>						
	July 07/06		% Chng	Jan - July 07/06		% Chng
	93,684	94,985	-1.4%	661,873	676,484	-2.2%
MONTH ENDED AND CUMULATIVE NUMBERS ARE PRELIMINARY AND SUBJECT TO CHANGE						
<b>DOC Bituminous Coal Trade (000 Tons)</b>						
<b>Exports:</b>	June 07/06			Jan - June 07/06		
			% Chng			% Chng
Metallurgical	2,893	2,496	15.9%	14,642	13,721	6.7%
Steam	2,195	1,847	18.8%	10,993	9,335	17.8%
<b>Imports:</b>	3,027	2,185	38.5%	17,191	16,914	1.6%
<b>EI Electric Output (Mil. Kwh)</b>						
	Week Ended			Cumulative Jan 1 to		
	08/25/07	08/26/06	% Chng	08/25/07	08/26/06	% Chng
	93,569	89,030	5.1%	2,696,460	2,646,138	1.9%
<b>AISI Raw Steel Output (000 Tons)</b>						
	2,114	2,086	1.3%	68,926	72,803	-5.3%
<b>EIA U.S. PETROLEUM DATA</b>						
4-Week Averages 000 Barrels per Day						
<b>PETROLEUM SUPPLY:</b>						
	Week Ending			Cumulative Daily Averages		
	08/24/07	08/24/06	% Chng	2007	2006	% Chng
Domestic Crude	5,154	5,158	0.1	5,183	5,101	1.6
Net Imports (Incl. SPR)	10,103	10,454	-3.4	10,102	10,066	0.4
SPR Stocks W/D or Added	0	0	--	-7	-14	--
Other Stocks W/D or added	389	26	--	-127	-32	--
Natural Gas Liquids Prod.	2,463	2,245	9.7	2,380	2,186	8.9



**NMA**

THE AMERICAN RESOURCE

National Mining Association Web Site: [http:// www.nma.org](http://www.nma.org)

## EIA Estimated Weekly U.S. Coal Production Overview (Thousand Short Tons)

Coal-Producing Region and State	Week Ended			Year to Date		Percent Change	52 Weeks Ended		Percent Change
	8/25/2007	8/18/2007	8/26/2006	8/25/2007	8/25/2006		8/25/2007	8/26/2006	
Alabama	412	406	348	13,256	12,786	3.7	19,490	19,581	-0.5
Alaska	28	28	24	1,005	913	10.1	1,517	1,312	15.6
Arizona	159	156	165	5,154	5,329	-3.3	8,041	9,251	-13.1
Arkansas	1	1	s	31	12	168.0	42	13	233.4
Colorado	787	775	725	23,429	22,992	1.9	36,683	35,724	2.7
Illinois	664	654	650	22,601	21,075	7.2	33,690	31,471	7.1
Indiana	733	721	683	23,420	23,179	1.0	35,960	35,199	2.2
Kansas	9	9	9	289	233	23.9	482	291	65.7
<b>Kentucky Total</b>	<b>2,384</b>	<b>2,347</b>	<b>2,271</b>	<b>76,343</b>	<b>80,468</b>	<b>-5.1</b>	<b>116,156</b>	<b>121,538</b>	<b>-4.4</b>
Eastern	1,789	1,761	1,760	57,132	62,656	-8.8	87,510	94,459	-7.4
Western	595	586	511	19,211	17,812	7.9	28,647	27,078	5.8
Louisiana	73	57	90	1,966	2,614	-24.8	3,457	4,059	-14.8
Maryland	107	105	119	2,693	3,780	-28.8	3,966	5,494	-27.8
Mississippi	64	80	95	2,423	2,559	-5.3	3,651	3,819	-4.4
Missouri	6	6	4	181	299	-39.6	276	525	-47.4
Montana	830	817	826	26,344	26,673	-1.2	41,395	40,867	1.3
New Mexico	518	510	485	15,676	16,552	-5.3	25,026	26,760	-6.5
North Dakota	542	533	613	18,385	19,357	-5.0	29,439	30,155	-2.4
Ohio	492	484	432	15,272	14,932	2.3	23,047	23,528	-2.0
Oklahoma	41	41	37	1,229	1,362	-9.8	1,865	2,017	-7.5
<b>Pennsylvania Total</b>	<b>1,262</b>	<b>1,242</b>	<b>1,187</b>	<b>42,249</b>	<b>43,945</b>	<b>-3.9</b>	<b>64,371</b>	<b>67,607</b>	<b>-4.8</b>
Anthracite	28	28	30	959	995	-3.6	1,479	1,610	-8.2
Bituminous	1,234	1,214	1,157	41,289	42,951	-3.9	62,893	65,996	-4.7
Tennessee	58	57	54	1,852	1,872	-1.0	2,785	2,954	-5.7
Texas	946	931	954	28,449	29,459	-3.4	44,415	46,286	-4.0
Utah	479	471	449	15,504	16,948	-8.5	24,563	25,425	-3.4
Virginia	592	583	568	18,881	19,808	-4.7	28,920	29,110	-0.7
Washington	0	0	53	0	1,896	-100.0	683	3,563	-80.8
<b>West Virginia Total</b>	<b>3,046</b>	<b>2,999</b>	<b>2,835</b>	<b>100,057</b>	<b>101,278</b>	<b>-1.2</b>	<b>150,559</b>	<b>153,478</b>	<b>-1.9</b>
Northern	943	929	759	30,522	28,926	5.5	44,268	43,738	1.2
Southern	2,103	2,070	2,076	69,535	72,353	-3.9	106,291	109,739	-3.1
Wyoming	8,405	8,585	8,728	285,845	288,150	-0.8	443,318	429,888	3.1
<b>Appalachian Total</b>	<b>7,759</b>	<b>7,637</b>	<b>7,304</b>	<b>251,393</b>	<b>261,057</b>	<b>-3.7</b>	<b>380,647</b>	<b>396,210</b>	<b>-3.9</b>
<b>Interior Total</b>	<b>3,133</b>	<b>3,086</b>	<b>3,032</b>	<b>99,800</b>	<b>98,603</b>	<b>1.2</b>	<b>152,485</b>	<b>150,757</b>	<b>1.1</b>
<b>Western Total</b>	<b>11,748</b>	<b>11,876</b>	<b>12,068</b>	<b>391,342</b>	<b>398,812</b>	<b>-1.9</b>	<b>610,664</b>	<b>602,946</b>	<b>1.3</b>
<b>East of Miss. River</b>	<b>9,815</b>	<b>9,679</b>	<b>9,242</b>	<b>319,047</b>	<b>325,682</b>	<b>-2.0</b>	<b>482,596</b>	<b>493,778</b>	<b>-2.3</b>
<b>West of Miss. River</b>	<b>12,825</b>	<b>12,921</b>	<b>13,162</b>	<b>423,487</b>	<b>432,790</b>	<b>-2.1</b>	<b>661,201</b>	<b>656,135</b>	<b>0.8</b>
Bituminous and Lignite	22,612	22,572	22,373	741,575	757,477	-2.1	1,142,318	1,148,303	-0.5
Anthracite	28	28	30	959	995	-3.6	1,479	1,610	-8.2
<b>U.S. Total</b>	<b>22,640</b>	<b>22,600</b>	<b>22,404</b>	<b>742,534</b>	<b>758,472</b>	<b>-2.1</b>	<b>1,143,796</b>	<b>1,149,913</b>	<b>-0.5</b>
Railroad Cars Loaded	148,388	147,875	145,914	4,794,892	4,857,146	-1.3	7,393,103	7,330,827	0.8

Source: Energy Information Administration



Volume 75 No. 34

**OUTPUT FOR WEEK ENDED - Aug 25, 2007**

**Aug 29, 2007**

The net available amount of electric energy distributed by the Total Electric Utility Industry+ for the week ended Saturday, **Aug 25, 2007** was **93,569** gigawatthours (GWh), according to the Edison Electric Institute. This is equivalent to **189** on the weekly electric output index.

**WEEKLY ELECTRIC OUTPUT BY GEOGRAPHIC DIVISION**  
(48 CONTIGUOUS STATES)

	Week Ended August 25		52 Weeks Ended August 25	
	GWh Output	% Increase Over Corresponding Week of 2006	GWh Output	% Increase Over Corresponding Period of 2006
New England	2,624	-0.9	132,252	-1.4
Mid-Atlantic	9,001	-9.3	448,898	-0.5
Central Industrial	15,593	4.2	709,877	0.8
West Central	7,403	0.4	347,613	0.1
Southeast	26,748	10.6	1,089,325	1.0
South Central	15,944	5.6	592,293	-1.3
Rocky Mountain	6,719	9.5	269,323	4.0
Pacific Northwest	2,747	2.2	156,726	3.8
Pacific Southwest	6,790	12.8	292,883	0.7
Total United States	93,569	5.1	4,039,190	0.6

**WEEKLY ELECTRIC OUTPUT IN PREVIOUS WEEKS--GWh**

Week Ended	2007	Week Ended	2006	% Inc. (07/06)	52 Weeks Ended	2007	% Inc. (07/06)
Aug 04	93,540	Aug 05	98,583	-5.1	Aug 04	4,024,833	0.2
Aug 11	96,955	Aug 12	92,651	4.6	Aug 11	4,029,137	0.3
Aug 18	94,455	Aug 19	88,941	6.2	Aug 18	4,034,651	0.5
Aug 25	93,569	Aug 26	89,030	5.1	Aug 25	4,039,190	0.6
Aug 25	2,696,460	Aug 26	2,646,138	1.9	YEAR TO DATE, FIRST 34 WEEKS		

**WEEKLY ELECTRIC OUTPUT INDEX--TOTAL U.S.\***  
**SEASONALLY ADJUSTED 1982 = 100**

Week Ended	2007	Week Ended	2006	Week Ended	2005
Aug 04	183	Aug 05	198	Aug 06	182
Aug 11	190	Aug 12	186	Aug 13	180
Aug 18	189	Aug 19	179	Aug 20	178
Aug 25	189	Aug 26	181	Aug 27	177

\* Excludes Alaska and Hawaii

+ Includes investor-owned companies, cooperatives and government-owned utilities.

Copyright © 2007 Edison Electric Institute. All rights reserved.

## WEEKLY ELECTRIC OUTPUT BY GEOGRAPHIC DIVISION (48 CONTIGUOUS STATES)

	Week Ended			NMA CUMULATIVE JANUARY 1 to			52 Weeks Ended		
	25-Aug	26-Aug	% Increase Over Corresponding Week of 2006	25-Aug	26-Aug	% Increase Over Corresponding Week of 2006	25-Aug	26-Aug	% Increase Over Corresponding Week of 2006
	2007	2006		2007	2006		2007	2006	
	GWh Output	GWh Output		GWh Output	GWh Output		GWh Output	GWh Output	
<b>New England</b>	2,624	2,648	-0.9%	<b>88,641</b>	<b>88,213</b>	<b>0.5%</b>	132,252	134,191	-1.4%
<b>Mid-Atlantic</b>	9,001	9,926	-9.3%	<b>302,571</b>	<b>297,423</b>	<b>1.7%</b>	448,898	451,269	-0.5%
<b>Central Industrial</b>	15,593	14,958	4.2%	<b>476,104</b>	<b>461,114</b>	<b>3.3%</b>	709,877	704,061	0.8%
<b>West Central</b>	7,403	7,372	0.4%	<b>233,602</b>	<b>230,139</b>	<b>1.5%</b>	347,613	347,357	0.1%
<b>Southeast</b>	26,748	24,182	10.6%	<b>726,503</b>	<b>709,267</b>	<b>2.4%</b>	1,089,325	1,078,507	1.0%
<b>South Central</b>	15,944	15,106	5.5%	<b>396,744</b>	<b>402,822</b>	<b>-1.5%</b>	592,293	600,011	-1.3%
<b>Rocky Mountain</b>	6,719	6,133	9.6%	<b>178,355</b>	<b>169,655</b>	<b>5.1%</b>	269,323	258,963	4.0%
<b>Pacific Northwest</b>	2,747	2,688	2.2%	<b>102,306</b>	<b>96,955</b>	<b>5.5%</b>	156,726	150,966	3.8%
<b>Pacific Southwest</b>	<u>6,790</u>	<u>6,017</u>	12.8%	<u><b>191,633</b></u>	<u><b>190,553</b></u>	<b>0.6%</b>	<u>292,883</u>	<u>290,944</u>	0.7%
<b>Total United States *</b>	93,569	89,030	5.1%	<b>2,696,459</b>	<b>2,646,141</b>	<b>1.9%</b>	4,039,190	4,016,269	0.6%

**Notes:** EEI output data are an estimate of electricity load made available for distribution derived as weekly net generation + purchases from non-utilities + net imports - exports - sales for resale. It is not meant to be a measure of electricity generation for the U.S. EEI survey data represent the majority of national distribution (large utilities, large government power projects, some independent and large municipal power projects). The remaining segment of the industry (smaller producers) is estimated. Non-utility generation is captured via direct sales to utilities.

\* Excludes Alaska and Hawaii

\*\* Less than one-tenth of one percent

SOURCE: Edison Electric Institute (EEI), *Weekly Electric Output Report*.

AMERICAN IRON AND STEEL INSTITUTE  
 1140 Connecticut Avenue, Suite 705  
 Washington, D.C. 20036

August 27, 2007  
**Revised**

**ESTIMATED WEEKLY RAW STEEL\* PRODUCTION**

<u>Period</u>	<u>Thousand Net Tons</u>	Percent		<u>Production by District</u>		
		<u>Change from Previous Period</u>	<u>Percent Capability Utilization**</u>	<u>Week Ending</u>		
				<u>Aug 25</u>	<u>Aug 18</u>	
<b><u>Week Ending</u></b>						
Aug 25, 2007	2,114	1.7	89.3	North East Coast	134	138
Aug 25, 2006	2,086	1.3	88.7	Pgh/Youngstown	201	202
Aug 18, 2007	2,078	1.7	87.8	Lake Erie	99	103
				Detroit	126	120
				Indiana/Chicago	526	544
				Midwest	268	249
				Southern	667	634
				Western	93	88
				Total	2114	2078
<b><u>Year-to-Date+</u></b>						
Aug 25, 2007	68,926	-5.3	85.2			
Aug 25, 2006	72,803	-	90.0			

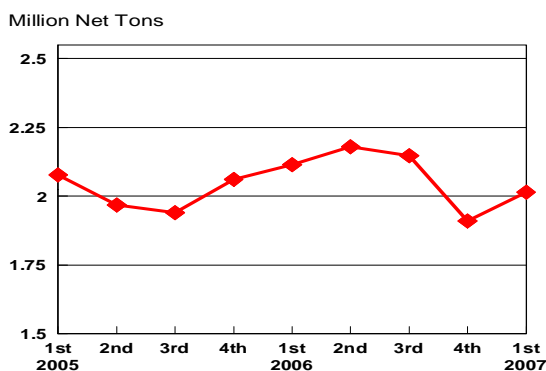
\*Raw steel production tonnage included in this report is estimated based on a sampling of steel producers. Therefore, this report should be used primarily to assess production trends. The AISI production report "AIS 7," produced monthly and available by subscription, provides a more accurate summary of steel production based on data supplied by companies representing approximately 75% of U.S. production capacity.

+Includes revisions for previous months

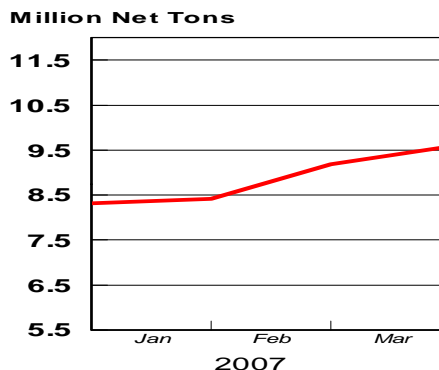
NOTE: Capability for the First Quarter 2007 is approximately 31.2 million net tons vs 30.5 million net tons for the same period last year, and 30.7 million tons for the fourth quarter of 2006.

Year	Capability (million tons/week)
2003 approx.	2.3
2004	2.2
2005	2.3
2006	2.4
2007	2.4

**Average Weekly Raw Steel Production**

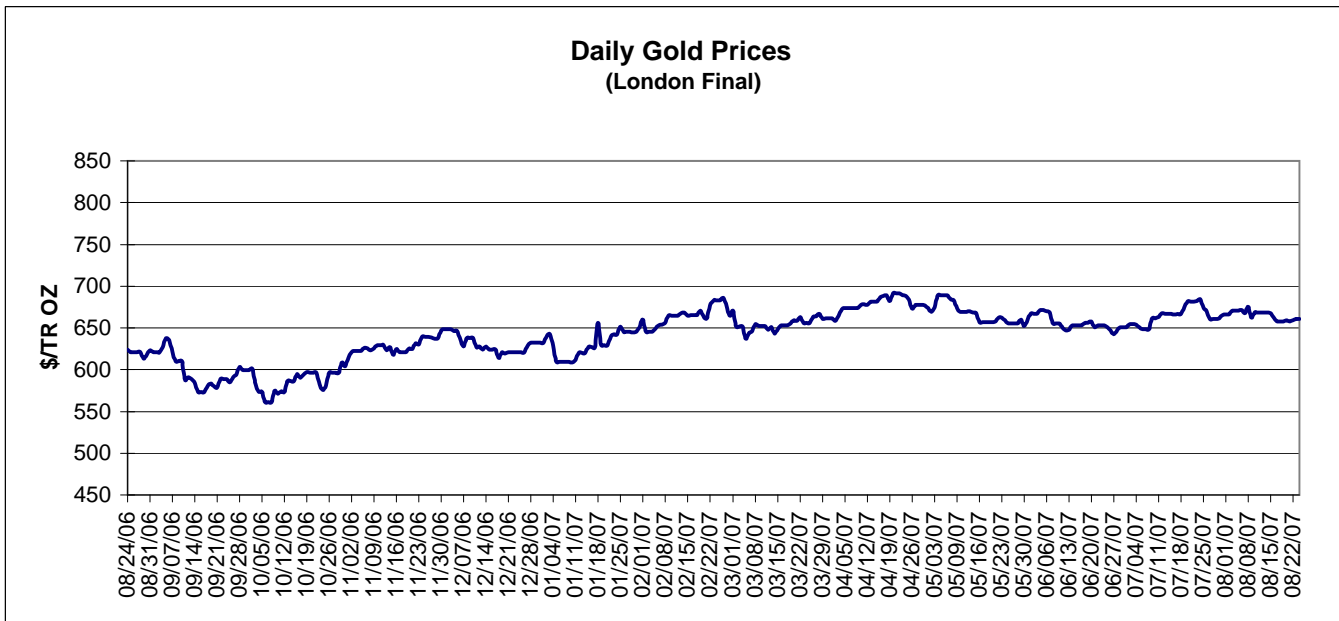
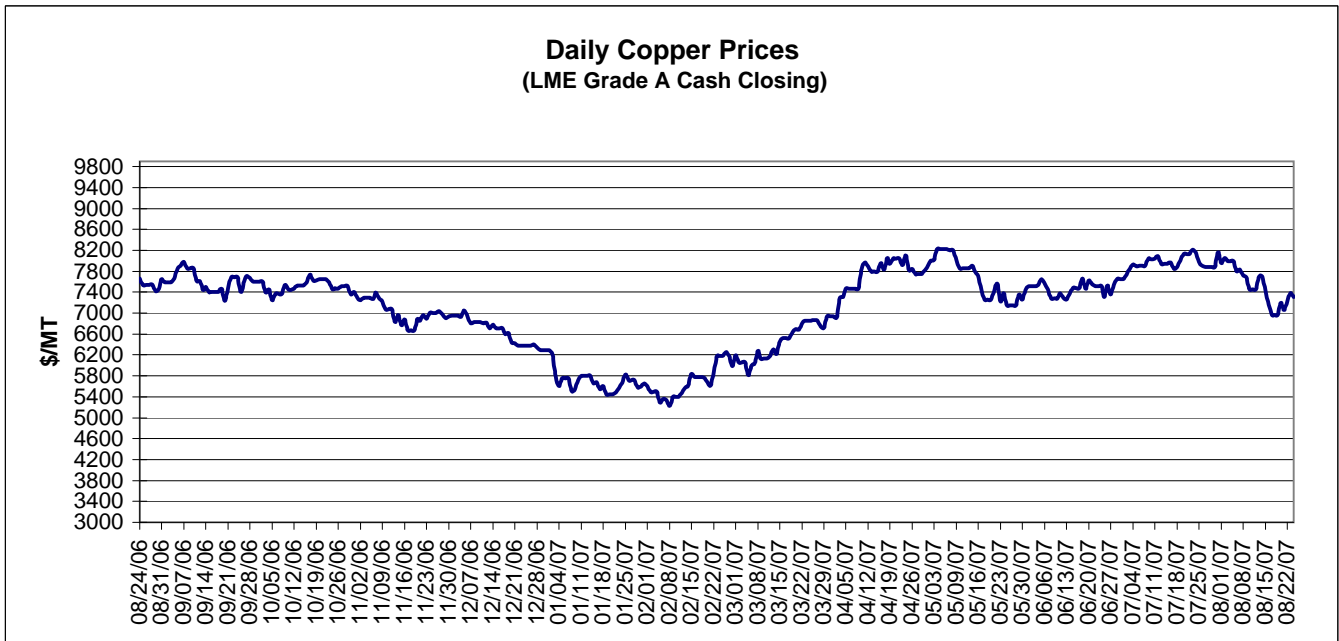


**MONTHLY RAW STEEL PRODUCTION**



\*Steel in the first solid state after melting suitable for further processing or sale, including ingots, steel for castings and strand or pressure cast blooms, slabs, or other product forms.

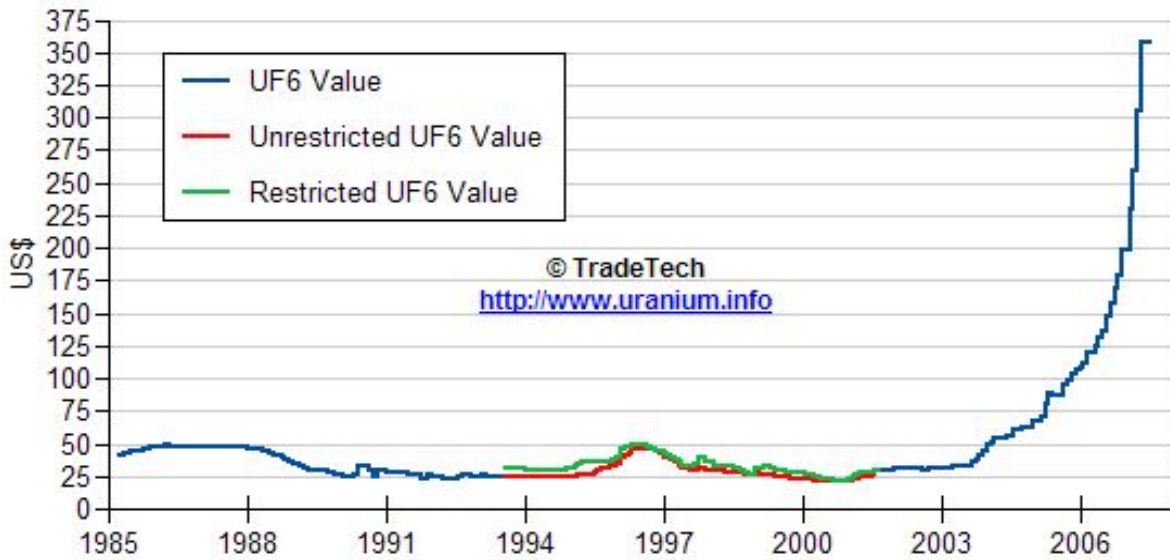
\*\* Based on tonnage capability to produce raw steel for a sustained full order book.



Data reflect closings on weekends and holidays.

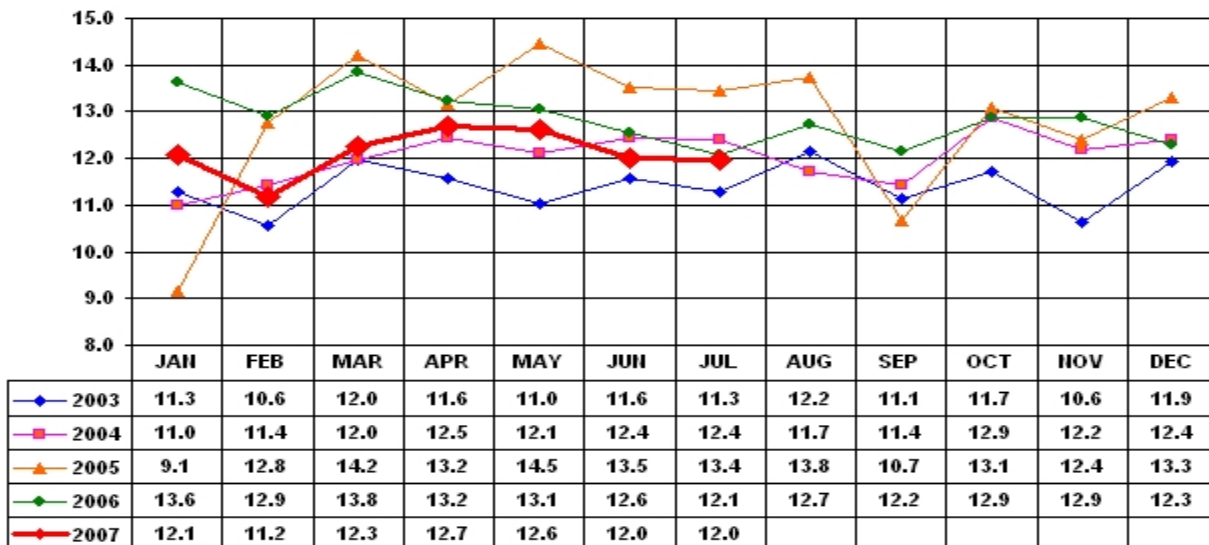
Source: Platts Metals Week

### Trade Tech's Uranium (UF6) Monthly Spot Prices (US\$/kg as UF6)



Source: Trade Tech, Uranium Info Website – <http://www.uranium.info>

### Coal and Coke Monthly Tonnage Indicator for Internal U.S. Waterways



Source: U.S. Army Corps of engineers, Waterborne Commerce Statistics Center