

---

National Mining Association

# Weekly Statistical Summary

August 8, 2008 Edition  
(Data for Week Ending August 2, 2008)

Prepared by  
National Mining Association



Suite 500 East, 101 Constitution Avenue, NW  
Washington, DC, 20001  
Phone (202) 463-2600  
Visit us at <http://www.nma.org>

# NMA Weekly Statistical Summary

Vol. 46, No. 31  
Dated 08/08/08

PRODUCTION, CONSUMPTION & TRADE						
	Week Ended			* Cumulative Jan 1 to		
	08/02/08	08/04/07	% Chng	08/02/08	08/02/07	% Chng
<b>EIA Coal Production (000 Tons):</b>						
Week Ended/Year to Date	23,177	22,335	3.8%	679,864	672,273	1.1%
52 Weeks Ended	1,148,715	1,147,338	0.1%			
* Due to leap year, 2008 cumulative reflects one extra day of tonnage.						
	July 08/07		% Chng	Jan - July 08/07		% Chng
<b>Month Ended -- July</b>	98,578	93,003	6.0%	674,159	664,731	1.4%
MONTH ENDED AND CUMULATIVE NUMBERS ARE PRELIMINARY AND SUBJECT TO CHANGE						
DOC Bituminous Coal Trade (000 Tons)						
	May 08/07		% Chng	Jan - May 08/07		% Chng
<b>Exports:</b>						
Metallurgical	4,842	2,626	84.4%	18,243	11,749	55.3%
Steam	3,492	2,086	67.4%	13,713	8,798	55.9%
<b>Imports:</b>	2,702	2,691	0.4%	13,328	14,164	-5.9%
	Week Ended			* Cumulative Jan 1 to		
	08/02/08	08/04/07	% Chng	08/02/08	08/04/07	% Chng
<b>EEl Electric Output (Mil. Kwh)</b>	93,147	93,540	-0.4%	2,428,992	2,411,482	0.7%
<b>AISI Raw Steel Output (000 Tons)</b>	2,113	2,059	2.6%	64,955	63,412	2.4%
EIA U.S. PETROLEUM DATA						
4-Week Averages 000 Barrels per Day						
	Week Ending			Cumulative Daily Averages		
	08/01/08	08/01/07	% Chng	2008	2007	% Chng
<b>PETROLEUM SUPPLY:</b>						
Domestic Crude	5,159	5,096	1.2	5,131	5,123	0.2
Net Imports (Incl. SPR)	10,172	9,884	2.9	9,822	9,988	-1.7
SPR Stocks W/D or Added	-31	0	--	-47	-8	--
Other Stocks W/D or added	-105	534	--	-38	-115	--
Natural Gas Liquids Prod.	2,247	2,491	-9.8	2,232	2,366	-5.7



**NMA**

THE AMERICAN RESOURCE National Mining Association Web Site: [http:// www.nma.org](http://www.nma.org)

## EIA Estimated Weekly U.S. Coal Production Overview (Thousand Short Tons)

Coal-Producing Region and State	Week Ended			Year to Date			Percent Change	52 Weeks Ended		Percent Change
	8/2/2008	7/26/2008	8/4/2007	8/2/2008	8/2/2007	8/2/2008		8/4/2007		
Alabama	386	378	371	12,386	11,473	8.0	20,359	18,831	8.1	
Alaska	28	27	13	859	856	0.3	1,324	1,444	-8.3	
Arizona	157	154	161	4,233	4,789	-11.6	7,394	8,207	-9.9	
Arkansas	1	1	2	39	45	-13.0	76	58	31.3	
Colorado	810	793	724	21,536	21,307	1.1	36,423	36,934	-1.4	
Illinois	597	585	592	18,755	21,292	-11.9	30,187	35,010	-13.8	
Indiana	700	686	708	20,966	20,596	1.8	35,218	35,126	0.3	
Kansas	6	6	8	230	256	-10.4	392	479	-18.1	
<b>Kentucky Total</b>	<b>2,376</b>	<b>2,328</b>	<b>2,204</b>	<b>71,203</b>	<b>68,938</b>	<b>3.3</b>	<b>117,323</b>	<b>116,457</b>	<b>0.7</b>	
Eastern	1,794	1,757	1,656	53,109	52,238	1.7	87,787	88,658	-1.0	
Western	583	571	548	18,094	16,700	8.3	29,536	27,799	6.2	
Louisiana	90	88	56	2,349	1,539	52.6	3,922	3,305	18.7	
Maryland	41	40	41	1,336	1,327	0.7	2,302	2,967	-22.4	
Mississippi	73	41	83	2,120	2,148	-1.3	3,495	3,634	-3.8	
Missouri	4	4	4	135	137	-1.4	233	243	-4.1	
Montana	839	822	891	26,396	23,965	10.1	45,578	41,748	9.2	
New Mexico	496	486	409	13,101	14,800	-11.5	22,665	25,698	-11.8	
North Dakota	564	553	603	16,711	17,259	-3.2	28,938	30,280	-4.4	
Ohio	467	458	457	14,375	12,807	12.2	24,042	21,986	9.4	
Oklahoma	36	35	32	1,034	985	5.0	1,691	1,737	-2.6	
<b>Pennsylvania Total</b>	<b>1,274</b>	<b>1,248</b>	<b>1,197</b>	<b>39,774</b>	<b>39,579</b>	<b>0.5</b>	<b>65,135</b>	<b>65,576</b>	<b>-0.7</b>	
Anthracite	24	24	29	962	927	3.7	1,597	1,547	3.2	
Bituminous	1,250	1,225	1,168	38,813	38,651	0.4	63,537	64,028	-0.8	
Tennessee	52	51	48	1,539	1,558	-1.2	2,626	2,664	-1.4	
Texas	780	764	846	23,630	23,856	-0.9	41,487	42,931	-3.4	
Utah	474	464	410	14,920	14,307	4.3	24,832	24,807	0.1	
Virginia	479	469	447	13,939	16,390	-15.0	22,911	28,245	-18.9	
Washington	--	--	--	--	--	--	0	842	-100.0	
<b>West Virginia Total</b>	<b>3,139</b>	<b>3,075</b>	<b>2,946</b>	<b>93,932</b>	<b>91,940</b>	<b>2.2</b>	<b>154,866</b>	<b>152,107</b>	<b>1.8</b>	
Northern	814	798	789	25,740	25,877	-0.5	41,911	41,854	0.1	
Southern	2,324	2,277	2,157	68,192	66,063	3.2	112,955	110,253	2.5	
Wyoming	9,308	9,174	9,081	264,366	260,123	1.6	455,296	446,021	2.1	
<b>Appalachian Total</b>	<b>7,632</b>	<b>7,477</b>	<b>7,162</b>	<b>230,390</b>	<b>227,312</b>	<b>1.4</b>	<b>380,028</b>	<b>381,034</b>	<b>-0.3</b>	
<b>Interior Total</b>	<b>2,870</b>	<b>2,781</b>	<b>2,880</b>	<b>87,352</b>	<b>87,555</b>	<b>-0.2</b>	<b>146,237</b>	<b>150,322</b>	<b>-2.7</b>	
<b>Western Total</b>	<b>12,675</b>	<b>12,472</b>	<b>12,293</b>	<b>362,122</b>	<b>357,406</b>	<b>1.3</b>	<b>622,450</b>	<b>615,983</b>	<b>1.0</b>	
<b>East of Miss. River</b>	<b>9,585</b>	<b>9,359</b>	<b>9,093</b>	<b>290,324</b>	<b>288,049</b>	<b>0.8</b>	<b>478,463</b>	<b>482,602</b>	<b>-0.9</b>	
<b>West of Miss. River</b>	<b>13,592</b>	<b>13,371</b>	<b>13,241</b>	<b>389,540</b>	<b>384,225</b>	<b>1.4</b>	<b>670,252</b>	<b>664,736</b>	<b>0.8</b>	
Bituminous and Lignite	23,153	22,707	22,306	678,902	671,346	1.1	1,147,118	1,145,791	0.1	
Anthracite	24	24	29	962	927	3.7	1,597	1,547	3.2	
<b>U.S. Total</b>	<b>23,177</b>	<b>22,730</b>	<b>22,335</b>	<b>679,864</b>	<b>672,273</b>	<b>1.1</b>	<b>1,148,715</b>	<b>1,147,338</b>	<b>0.1</b>	
Railroad Cars Loaded	154,657	150,766	146,905	4,486,820	4,354,010	3.1	7,536,842	7,392,409	2.0	

**Source: Energy Information Administration**

## EIA Estimated Monthly U.S. Coal Production Overview (Thousand Short Tons)

Coal-Producing Region and State	Week Ended		Year to Date		Month Ended		January - July		Percent Change
	8/2/2008	8/4/2007	8/2/2008	8/2/2007	July 2008	July 2007	2008	2007	
Alabama	386	371	12,386	11,473	1,649	1,530	12,308	11,326	8.7
Alaska	28	13	859	856	118	55	854	851	0.3
Arizona	157	161	4,233	4,789	672	664	4,201	4,724	-11.1
Arkansas	1	2	39	45	5	8	39	44	-11.9
Colorado	810	724	21,536	21,307	3,372	2,999	21,323	21,078	1.2
Illinois	597	592	18,755	21,292	2,519	2,445	18,621	21,075	-11.6
Indiana	700	708	20,966	20,596	2,972	2,921	20,812	20,331	2.4
Kansas	6	8	230	256	26	32	229	253	-9.8
<b>Kentucky Total</b>	<b>2,376</b>	<b>2,204</b>	<b>71,203</b>	<b>68,938</b>	<b>10,083</b>	<b>9,094</b>	<b>70,694</b>	<b>68,097</b>	<b>3.8</b>
Eastern	1,794	1,656	53,109	52,238	7,623	6,830	52,733	51,596	2.2
Western	583	548	18,094	16,700	2,460	2,264	17,961	16,501	8.9
Louisiana	90	56	2,349	1,539	398	367	2,326	1,521	52.9
Maryland	41	41	1,336	1,327	175	169	1,327	1,311	1.3
Mississippi	73	83	2,120	2,148	347	335	2,100	2,122	-1.0
Missouri	4	4	135	137	18	18	134	135	-0.8
Montana	839	891	26,396	23,965	3,484	3,694	26,167	23,694	10.4
New Mexico	496	409	13,101	14,800	2,111	1,687	12,996	14,643	-11.3
North Dakota	564	603	16,711	17,259	2,415	2,485	16,599	17,018	-2.5
Ohio	467	457	14,375	12,807	1,982	1,886	14,272	12,638	12.9
Oklahoma	36	32	1,034	985	154	132	1,027	972	5.7
<b>Pennsylvania Total</b>	<b>1,274</b>	<b>1,197</b>	<b>39,774</b>	<b>39,579</b>	<b>5,426</b>	<b>4,936</b>	<b>39,507</b>	<b>39,115</b>	<b>1.0</b>
Anthracite	24	29	962	927	103	120	957	916	4.5
Bituminous	1,250	1,168	38,813	38,651	5,324	4,816	38,550	38,200	0.9
Tennessee	52	48	1,539	1,558	223	199	1,529	1,539	-0.7
Texas	780	846	23,630	23,856	3,235	3,510	23,414	23,605	-0.8
Utah	474	410	14,920	14,307	2,006	1,693	14,819	14,150	4.7
Virginia	479	447	13,939	16,390	2,028	1,846	13,832	16,224	-14.7
Washington	--	--	--	--	--	--	--	--	--
<b>West Virginia Total</b>	<b>3,139</b>	<b>2,946</b>	<b>93,932</b>	<b>91,940</b>	<b>13,298</b>	<b>12,162</b>	<b>93,241</b>	<b>90,840</b>	<b>2.6</b>
Northern	814	789	25,740	25,877	3,443	3,258	25,563	25,579	-0.1
Southern	2,324	2,157	68,192	66,063	9,855	8,904	67,678	65,261	3.7
Wyoming	9,308	9,081	264,366	260,123	39,862	38,139	261,788	257,422	1.7
<b>Appalachian Total</b>	<b>7,632</b>	<b>7,162</b>	<b>230,390</b>	<b>227,312</b>	<b>32,405</b>	<b>29,556</b>	<b>228,750</b>	<b>224,590</b>	<b>1.9</b>
<b>Interior Total</b>	<b>2,870</b>	<b>2,880</b>	<b>87,352</b>	<b>87,555</b>	<b>12,134</b>	<b>12,032</b>	<b>86,663</b>	<b>86,560</b>	<b>0.1</b>
<b>Western Total</b>	<b>12,675</b>	<b>12,293</b>	<b>362,122</b>	<b>357,406</b>	<b>54,039</b>	<b>51,416</b>	<b>358,746</b>	<b>353,582</b>	<b>1.5</b>
<b>East of Miss. River</b>	<b>9,585</b>	<b>9,093</b>	<b>290,324</b>	<b>288,049</b>	<b>40,703</b>	<b>37,521</b>	<b>288,245</b>	<b>284,618</b>	<b>1.3</b>
<b>West of Miss. River</b>	<b>13,592</b>	<b>13,241</b>	<b>389,540</b>	<b>384,225</b>	<b>57,876</b>	<b>55,482</b>	<b>385,914</b>	<b>380,113</b>	<b>1.5</b>
Bituminous and Lignite	23,153	22,306	678,902	671,346	98,476	92,884	673,202	663,816	1.4
Anthracite	24	29	962	927	103	120	957	916	4.5
<b>U.S. Total</b>	<b>23,177</b>	<b>22,335</b>	<b>679,864</b>	<b>672,273</b>	<b>98,578</b>	<b>93,003</b>	<b>674,159</b>	<b>664,731</b>	<b>1.4</b>
Railroad Cars Loaded	154,657	146,905	4,486,820	4,354,010	--	--	--	--	--

Source: Energy Information Administration



Volume 76 No. 31

**OUTPUT FOR WEEK ENDED - Aug 02, 2008**

Aug 06, 2008

The net available amount of electric energy distributed by the Total Electric Utility Industry+ for the week ended Saturday, **Aug 02, 2008** was **93,147** gigawatthours (GWh), according to the Edison Electric Institute. This is equivalent to **177** on the weekly electric output index.

**WEEKLY ELECTRIC OUTPUT BY GEOGRAPHIC DIVISION**  
(48 CONTIGUOUS STATES)

	Week Ended August 02		52 Weeks Ended August 02	
	GWh Output	% Increase Over Corresponding Week of 2007	GWh Output	% Increase Over Corresponding Period of 2007
New England	2,923	-10.0	133,199	0.8
Mid-Atlantic	10,377	-5.8	456,883	1.7
Central Industrial	15,999	-3.7	719,796	1.9
West Central	8,180	-3.1	349,095	0.7
Southeast	24,948	1.2	1,111,884	2.6
South Central	15,271	10.7	614,383	3.8
Rocky Mountain	6,602	2.9	277,150	3.5
Pacific Northwest	2,793	-1.0	166,736	6.6
Pacific Southwest	6,054	-7.4	288,997	-0.8
Total United States	93,147	-0.4	4,118,123	2.3

**WEEKLY ELECTRIC OUTPUT IN PREVIOUS WEEKS--GWh**

Week Ended	2008	Week Ended	2007	% Inc. (08/07)	52 Weeks Ended	2008	% Inc. (08/07)
Jul 12	88,047	Jul 14	88,617	-0.6	Jul 12	4,111,541	1.7
Jul 19	90,310	Jul 21	87,961	2.7	Jul 19	4,113,890	1.9
Jul 26	91,262	Jul 28	86,636	5.3	Jul 26	4,118,516	2.2
Aug 02	93,147	Aug 04	93,540	-0.4	Aug 02	4,118,123	2.3
Aug 02	2,428,992	Aug 04	2,411,482	0.7	YEAR TO DATE, FIRST 31 WEEKS		

**WEEKLY ELECTRIC OUTPUT INDEX--TOTAL U.S.\***  
SEASONALLY ADJUSTED 1982 = 100

Week Ended	2008	Week Ended	2007	Week Ended	2006
Jul 12	181	Jul 14	186	Jul 15	189
Jul 19	174	Jul 21	174	Jul 22	197
Jul 26	176	Jul 28	171	Jul 29	187
Aug 02	177	Aug 04	183	Aug 05	198

\* Excludes Alaska and Hawaii.

+ Includes investor-owned companies, cooperatives and government-owned utilities.

Copyright © 2008 Edison Electric Institute. All rights reserved.

### WEEKLY ELECTRIC OUTPUT BY GEOGRAPHIC DIVISION (48 CONTIGUOUS STATES)

	Week Ended			NMA CUMULATIVE JANUARY WEEK ONE TO			52 Weeks Ended		
	2-Aug 2008 GWh Output	4-Aug 2007 GWh Output	% Increase Over Corresponding Week of 2007	2-Aug 2008 GWh Output	4-Aug 2007 GWh Output	% Increase Over Corresponding Week of 2007	2-Aug 2008 GWh Output	4-Aug 2007 GWh Output	% Increase Over Corresponding Week of 2007
<b>New England</b>	2,923	3,248	-10.0%	<b>79,122</b>	<b>80,369</b>	<b>-1.6%</b>	133,199	132,135	0.8%
<b>Mid-Atlantic</b>	10,377	11,021	-5.8%	<b>270,881</b>	<b>272,666</b>	<b>-0.7%</b>	456,883	449,149	1.7%
<b>Central Industrial</b>	15,999	16,608	-3.7%	<b>424,569</b>	<b>426,911</b>	<b>-0.5%</b>	719,796	706,634	1.9%
<b>West Central</b>	8,180	8,438	-3.1%	<b>206,808</b>	<b>209,927</b>	<b>-1.5%</b>	349,095	346,521	0.7%
<b>Southeast</b>	24,948	24,654	1.2%	<b>651,916</b>	<b>646,692</b>	<b>0.8%</b>	1,111,884	1,083,266	2.6%
<b>South Central</b>	15,271	13,796	10.7%	<b>367,010</b>	<b>350,764</b>	<b>4.6%</b>	614,383	591,747	3.8%
<b>Rocky Mountain</b>	6,602	6,418	2.9%	<b>158,147</b>	<b>158,425</b>	<b>-0.2%</b>	277,150	267,781	3.5%
<b>Pacific Northwest</b>	2,793	2,820	-1.0%	<b>101,703</b>	<b>94,046</b>	<b>8.1%</b>	166,736	156,400	6.6%
<b>Pacific Southwest</b>	6,054	6,537	-7.4%	<b>168,837</b>	<b>171,680</b>	<b>-1.7%</b>	288,997	291,200	-0.8%
<b>Total United States *</b>	93,147	93,540	-0.4%	<b>2,428,993</b>	<b>2,411,480</b>	<b>0.7%</b>	4,118,123	4,024,833	2.3%

**Notes:** EEI output data are an estimate of electricity load made available for distribution derived as weekly net generation + purchases from non-utilities + net imports - exports - sales for resale. It is not meant to be a measure of electricity generation for the U.S. EEI survey data represent the majority of national distribution (large utilities, large government power projects, some independent and large municipal power projects). The remaining segment of the industry (smaller producers) is estimated. Non-utility generation is captured via direct sales to utilities.

\* Excludes Alaska and Hawaii

\*\* Less than one-tenth of one percent

SOURCE: Edison Electric Institute (EEI), *Weekly Electric Output Report*.

AMERICAN IRON AND STEEL INSTITUTE  
 1140 Connecticut Avenue, Suite 705  
 Washington, D.C. 20036

August 4, 2008

**ESTIMATED WEEKLY RAW STEEL \* PRODUCTION**

Period	Thousand Net Tons	Percent Change from Previous Period	Percent Capacity Utilization**	Production by District		
				Week Ending Aug. 2	Week Ending July 26	
<b>Week Ending</b>				North East Coast	178	181
				Pgh/Youngstown	217	215
				Lake Erie	87	93
August 4, 2008	2,113	-1.4	88.6	Detroit	102	108
August 4, 2007	2,059	2.7	87.0	Indiana/Chicago	499	504
July 26, 2008	2,142	1.4	89.8	Midwest	271	265
<b>Year-to-Date+</b>				Southern	663	679
August 4, 2008	64,955	2.5	88.6	Western	96	97
August 4, 2007	63,412	-	85.9	Total	2,113	2,142

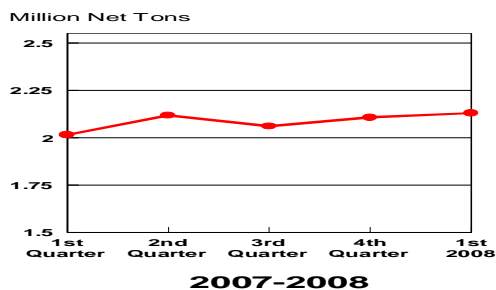
\*Raw steel production tonnage included in this report is estimated based on a sampling of steel producers. Therefore, this report should be used primarily to assess production trends. The AISI production report "AIS 7," produced monthly and available by subscription, provides a more accurate summary of steel production based on data supplied by companies representing approximately 75% of U.S. production capacity.

+ Includes revisions for previous months

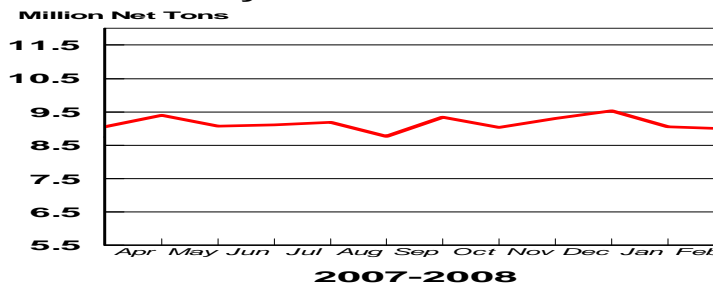
NOTE: Capacity for the Fourth Quarter 2007 is approximately 31.3 million net tons vs 30.7 million net tons for the same period last year, and 30.1 million tons for the third quarter of 2007.

Capacity -	2003 approx.	2.3 million tons/week
	2004	2.2
	2005	2.3
	2006	2.4
	2007	2.4

**Average Weekly Raw Steel Production**

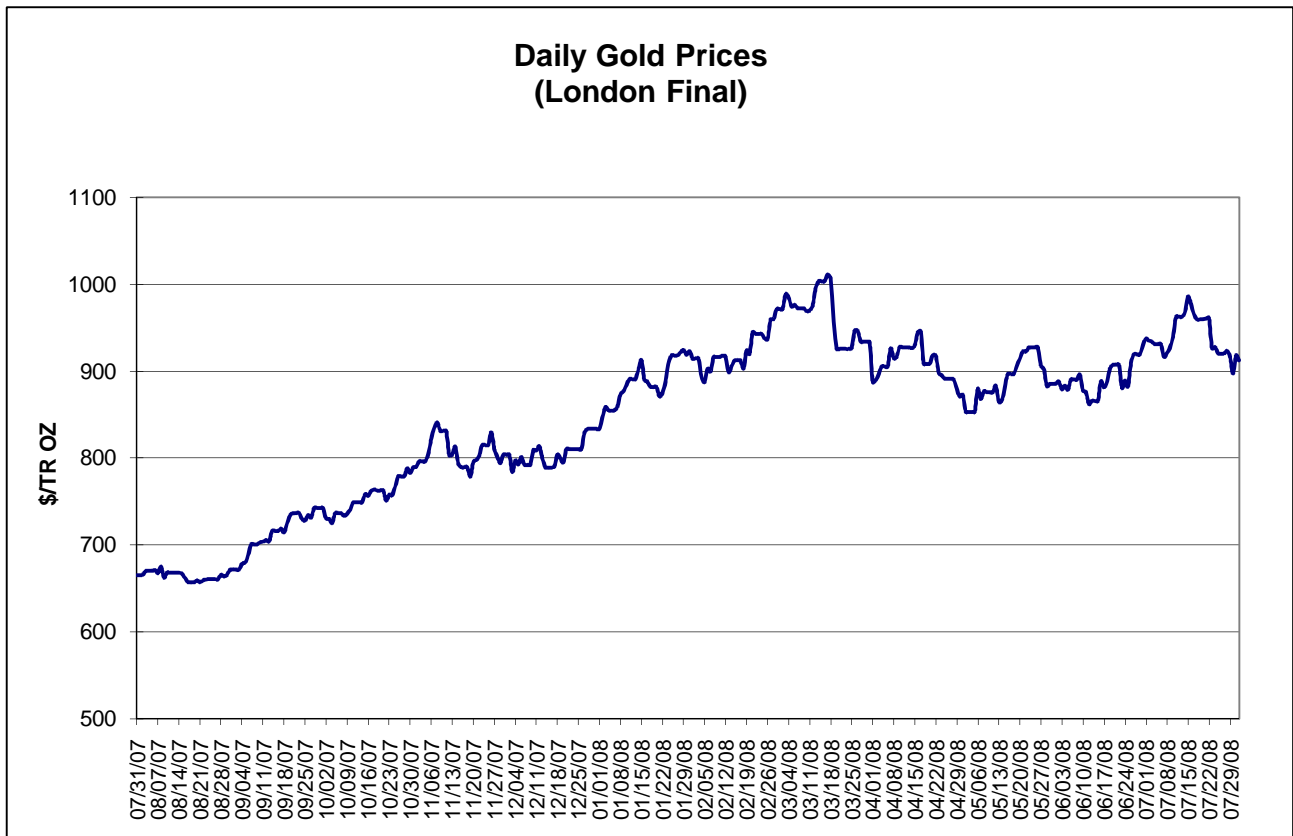
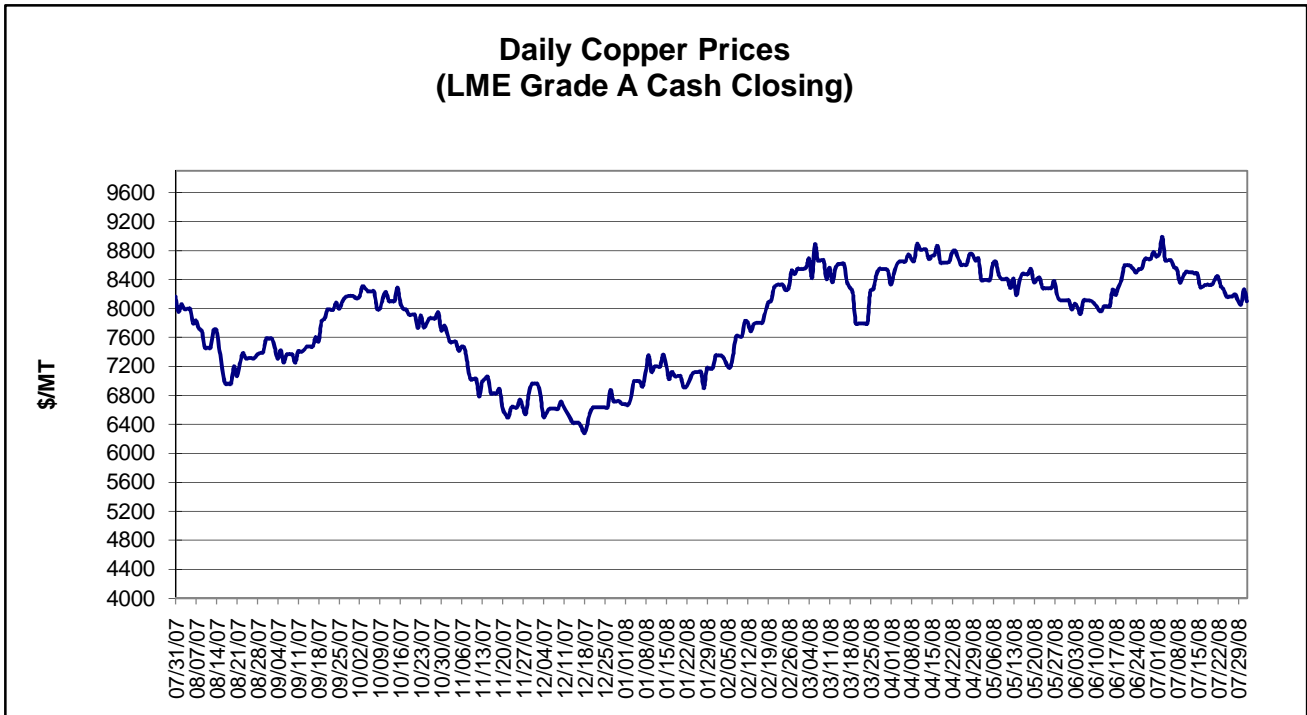


**Monthly Raw Steel Production**



\*Steel in the first solid state after melting suitable for further processing or sale, including ingots, steel for castings and strand or pressure cast blooms, slabs, or other product forms.

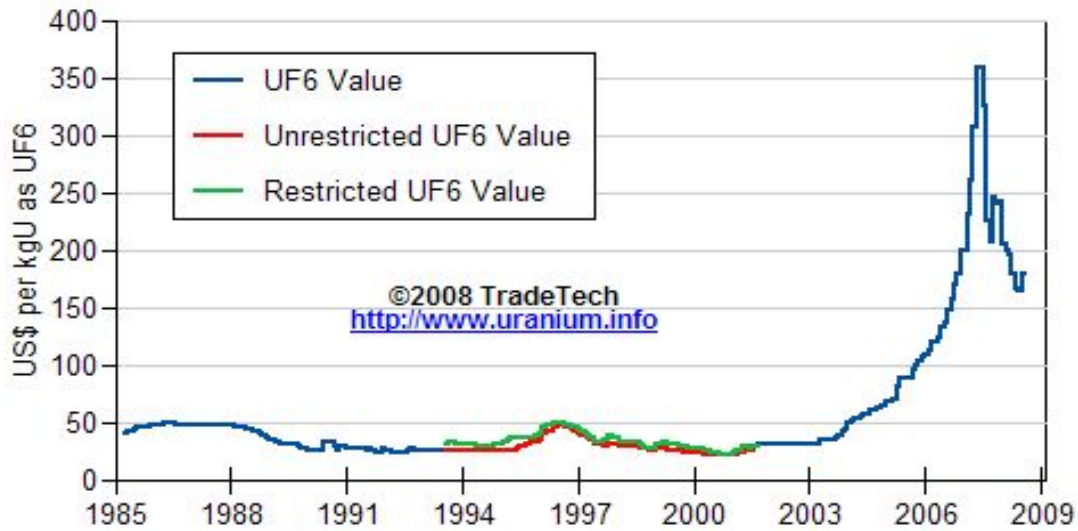
\*\* Based on tonnage capability to produce raw steel for a sustained full order book.



Data reflect closings on weekends and holidays.

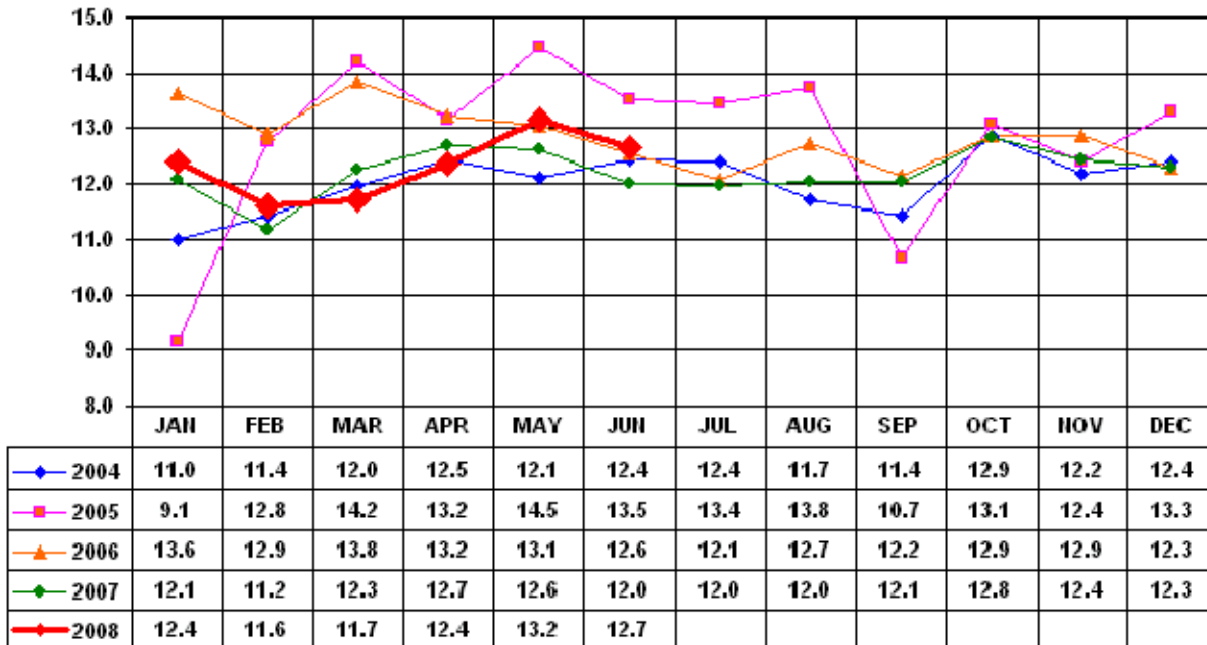
Source: Platts Metals Week

### Trade Tech's Uranium (UF6) Monthly Spot Prices (US\$/kg as UF6)



Source: Trade Tech, Uranium Info Website – <http://www.uranium.info>

### Coal and Coke Monthly Tonnage Indicator for Internal U.S. Waterways



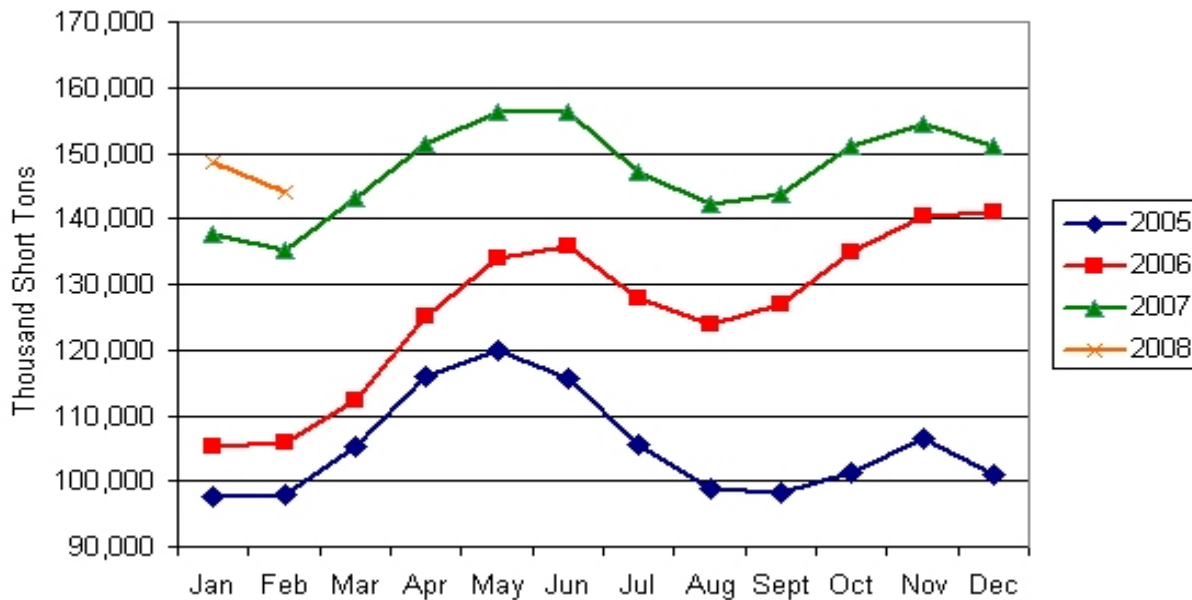
Source: U.S. Army Corps of Engineers, Waterborne Commerce Statistics Center

### EIA Weekly Spot Coal Prices

Spot Coal Prices (Dollars per Short Ton)					
Week Ended	Central Appalachia 12,500 Btu, 1.2 SO2	Northern Appalachia 13,000 Btu, <3.0 SO2	Illinois Basin 11,800 Btu, 5.0 SO2	Powder River Basin 8,800 Btu, 0.8 SO2	Uinta Basin 11,700 Btu, 0.8 SO2
03-July-08	\$117.60	\$130.00	\$70.00	\$14.00	\$54.00
11-July-08	\$134.55	\$138.00	\$70.00	\$14.00	\$56.00
18-July-08	\$139.30	\$138.00	\$70.00	\$14.00	\$56.00
25-July-08	\$140.00	\$149.00	\$71.00	\$12.50	\$62.00
01-Aug-08	\$140.00	\$149.00	\$71.00	\$12.50	\$62.00

Source: Energy Information Administration (from Platts *Coal Outlook*, "Weekly Price Survey")

### EIA Electric Power Sector Coal Stocks



Source: Energy Information Administration

<b>USGS Production of Selected Mineral Commodities</b>	<b>2008 First Quarter</b>	<b>2007 First Quarter</b>	<b>Percent Change</b>
Aluminum, secondary (000 Mt.)	240.0	243.0	-1%
Cement (Mil. Mt.)	17.2	18.0	-4%
Gypsum (Mil. Mt.) *	4.7	5.4	-13%
Iron Ore (Mil. Mt.)	12.9	11.4	13%
Phosphate rock (Mil. Mt.)	7.6	7.1	7%
Sand & gravel, construction (Mil. Mt.)	184.0	194.0	-5%
Soda ash (Mil. Mt.)	2.8	2.7	4%
Stone, crushed (Mil. Mt.)	280.0	263.0	6%
Zinc (000 Mt.)	207.0	181.0	14%

Source: U.S. Geological Survey, Mineral Industry Surveys, *U.S. Production of Selected Mineral Commodities in the First Quarter 2008*

\* Revised June 16, 2008. Note - data are preliminary.