

---

National Mining Association

# Weekly Statistical Summary

September 12, 2008 Edition  
(Data for Week Ending September 6, 2008)

Prepared by  
National Mining Association



Suite 500 East, 101 Constitution Avenue, NW  
Washington, DC, 20001  
Phone (202) 463-2600  
Visit us at <http://www.nma.org>

# NMA Weekly Statistical Summary

Vol. 46, No. 36  
Dated 09/12/08

PRODUCTION, CONSUMPTION & TRADE						
	Week Ended			* Cumulative Jan 1 to		
	09/06/08	09/08/07	% Chng	09/06/08	09/06/07	% Chng
<b>EIA Coal Production (000 Tons):</b>						
Week Ended/Year to Date	22,385	21,994	1.8%	794,600	782,485	1.5%
52 Weeks Ended	1,152,147	1,146,834	0.5%			
* Due to leap year, 2008 cumulative reflects one extra day of tonnage.						
	August 08/07		% Chng	Jan - Aug 08/07		% Chng
<b>Month Ended -- August</b>	99,865	100,627	-0.8%	774,024	765,359	1.1%
MONTH ENDED AND CUMULATIVE NUMBERS ARE PRELIMINARY AND SUBJECT TO CHANGE						
DOC Bituminous Coal Trade (000 Tons)						
	June 08/07		% Chng	Jan - June 08/07		% Chng
<b>Exports:</b>						
Metallurgical	3,417	2,893	18.1%	21,660	14,642	47.9%
Steam	3,188	2,195	45.2%	16,902	10,993	53.8%
<b>Imports:</b>	3,295	3,027	8.9%	16,622	17,191	-3.3%
	Week Ended			* Cumulative Jan 1 to		
	09/06/08	09/08/07	% Chng	09/06/08	09/08/07	% Chng
<b>EEl Electric Output (Mil. Kwh)</b>	84,412	88,495	-4.6%	2,860,765	2,875,321	-0.5%
<b>AISI Raw Steel Output (000 Tons)</b>	2,062	2,047	0.7%	75,538	73,759	2.4%
EIA U.S. PETROLEUM DATA						
4-Week Averages						
000 Barrels per Day						
	Week Ending			Cumulative Daily Averages		
	09/05/08	09/05/07	% Chng	2008	2007	% Chng
<b>PETROLEUM SUPPLY:</b>						
Domestic Crude	4,791	4,910	2.4	5,094	5,093	0.0
Net Imports (Incl. SPR)	9,819	10,274	-4.4	9,811	10,029	-2.2
SPR Stocks W/D or Added	0	-16	--	-42	-9	--
Other Stocks W/D or added	-53	492	--	-41	-28	--
Natural Gas Liquids Prod.	2,371	2,394	-1.0	2,264	2,370	-4.5



**NMA**

THE AMERICAN RESOURCE National Mining Association Web Site: [http:// www.nma.org](http://www.nma.org)

## EIA Estimated Weekly U.S. Coal Production Overview (Thousand Short Tons)

Coal-Producing Region and State	Week Ended			Year to Date			52 Weeks Ended		
	9/6/2008	8/30/2008	9/8/2007	9/6/2008	9/6/2007	Percent Change	9/6/2008	9/8/2007	Percent Change
Alabama	363	383	359	14,293	13,279	7.6	20,404	18,948	7.7
Alaska	26	27	13	996	923	8.0	1,394	1,389	0.4
Arizona	148	156	156	5,011	5,576	-10.1	7,364	8,185	-10.0
Arkansas	1	1	2	45	55	-18.3	72	66	8.4
Colorado	761	804	700	25,540	24,936	2.4	36,791	36,933	-0.4
Illinois	561	592	572	21,707	24,238	-10.4	30,166	34,722	-13.1
Indiana	659	695	684	24,430	24,077	1.5	35,129	35,309	-0.5
Kansas	6	6	7	260	293	-11.4	384	470	-18.3
<b>Kentucky Total</b>	<b>2,235</b>	<b>2,359</b>	<b>2,130</b>	<b>82,956</b>	<b>79,834</b>	<b>3.9</b>	<b>118,010</b>	<b>116,070</b>	<b>1.7</b>
Eastern	1,687	1,781	1,600	61,981	60,416	2.6	88,345	88,082	0.3
Western	548	578	530	20,975	19,418	8.0	29,665	27,989	6.0
Louisiana	84	84	94	2,781	1,891	47.0	3,990	3,232	23.5
Maryland	39	41	40	1,540	1,530	0.7	2,301	2,574	-10.6
Mississippi	51	51	87	2,420	2,517	-3.9	3,421	3,632	-5.8
Missouri	4	4	4	155	158	-1.6	232	247	-6.2
Montana	789	833	861	30,545	28,440	7.4	45,252	42,075	7.6
New Mexico	466	492	395	15,553	16,805	-7.4	23,064	25,318	-8.9
North Dakota	530	560	583	19,501	20,193	-3.4	28,700	30,232	-5.1
Ohio	439	464	441	16,685	15,051	10.9	24,059	22,110	8.8
Oklahoma	34	36	31	1,212	1,141	6.2	1,708	1,715	-0.4
<b>Pennsylvania Total</b>	<b>1,198</b>	<b>1,265</b>	<b>1,157</b>	<b>46,078</b>	<b>45,452</b>	<b>1.4</b>	<b>65,429</b>	<b>65,623</b>	<b>-0.3</b>
Anthracite	23	24	28	1,081	1,070	1.1	1,571	1,540	2.0
Bituminous	1,176	1,241	1,129	44,997	44,383	1.4	63,858	64,082	-0.3
Tennessee	49	52	47	1,798	1,798	*	2,642	2,634	0.3
Texas	733	774	818	27,486	28,099	-2.2	41,093	42,395	-3.1
Utah	445	470	396	17,263	16,345	5.6	25,115	24,612	2.0
Virginia	451	476	432	16,309	18,602	-12.3	23,036	27,638	-16.6
Washington	--	--	--	--	--	--	0	578	-100.0
<b>West Virginia Total</b>	<b>2,952</b>	<b>3,116</b>	<b>2,848</b>	<b>109,455</b>	<b>106,494</b>	<b>2.8</b>	<b>155,596</b>	<b>152,665</b>	<b>1.9</b>
Northern	766	808	763	29,768	29,809	-0.1	41,975	42,078	-0.2
Southern	2,186	2,307	2,085	79,687	76,685	3.9	113,621	110,587	2.7
Wyoming	9,361	9,531	9,138	310,581	304,757	1.9	456,795	447,461	2.1
<b>Appalachian Total</b>	<b>7,177</b>	<b>7,576</b>	<b>6,923</b>	<b>268,139</b>	<b>262,622</b>	<b>2.1</b>	<b>381,811</b>	<b>380,274</b>	<b>0.4</b>
<b>Interior Total</b>	<b>2,681</b>	<b>2,822</b>	<b>2,829</b>	<b>101,471</b>	<b>101,888</b>	<b>-0.4</b>	<b>145,859</b>	<b>149,777</b>	<b>-2.6</b>
<b>Western Total</b>	<b>12,527</b>	<b>12,873</b>	<b>12,242</b>	<b>424,990</b>	<b>417,975</b>	<b>1.7</b>	<b>624,476</b>	<b>616,784</b>	<b>1.2</b>
<b>East of Miss. River</b>	<b>8,996</b>	<b>9,493</b>	<b>8,796</b>	<b>337,671</b>	<b>332,873</b>	<b>1.4</b>	<b>480,191</b>	<b>481,925</b>	<b>-0.4</b>
<b>West of Miss. River</b>	<b>13,389</b>	<b>13,779</b>	<b>13,198</b>	<b>456,929</b>	<b>449,612</b>	<b>1.6</b>	<b>671,955</b>	<b>664,909</b>	<b>1.1</b>
Bituminous and Lignite	22,362	23,247	21,966	793,519	781,415	1.5	1,150,576	1,145,294	0.5
Anthracite	23	24	28	1,081	1,070	1.1	1,571	1,540	2.0
<b>U.S. Total</b>	<b>22,385</b>	<b>23,271</b>	<b>21,994</b>	<b>794,600</b>	<b>782,485</b>	<b>1.5</b>	<b>1,152,147</b>	<b>1,146,834</b>	<b>0.5</b>
Railroad Cars Loaded	148,207	156,633	144,548	5,254,235	5,086,992	3.3	7,571,275	7,389,773	2.5

Source: Energy Information Administration

## EIA Estimated Weekly and Monthly U.S. Coal Production Overview (Thousand Short Tons)

Coal-Producing Region and State	Week Ended		Year to Date		Month Ended		January - August		Percent Change
	9/6/2008	9/8/2007	9/6/2008	9/6/2007	August 2008	August 2007	2008	2007	
Alabama	363	359	14,293	13,279	1,625	1,724	13,933	13,051	6.8
Alaska	26	13	996	923	116	62	970	913	6.3
Arizona	148	156	5,011	5,576	662	749	4,863	5,474	-11.2
Arkansas	1	2	45	55	5	10	44	54	-18.5
Colorado	761	700	25,540	24,936	3,540	3,278	24,863	24,356	2.1
Illinois	561	572	21,707	24,238	2,550	2,726	21,172	23,801	-11.0
Indiana	659	684	24,430	24,077	2,983	3,266	23,795	23,597	0.8
Kansas	6	7	260	293	26	36	254	289	-12.0
<b>Kentucky Total</b>	<b>2,235</b>	<b>2,130</b>	<b>82,956</b>	<b>79,834</b>	<b>10,085</b>	<b>10,197</b>	<b>80,779</b>	<b>78,294</b>	<b>3.2</b>
Eastern	1,687	1,600	61,981	60,416	7,591	7,676	60,324	59,272	1.8
Western	548	530	20,975	19,418	2,493	2,522	20,455	19,022	7.5
Louisiana	84	94	2,781	1,891	380	295	2,706	1,817	48.9
Maryland	39	40	1,540	1,530	174	190	1,502	1,501	0.1
Mississippi	51	87	2,420	2,517	274	329	2,375	2,451	-3.1
Missouri	4	4	155	158	17	20	151	155	-2.4
Montana	789	861	30,545	28,440	3,686	4,019	29,854	27,713	7.7
New Mexico	466	395	15,553	16,805	2,102	1,894	15,097	16,537	-8.7
North Dakota	530	583	19,501	20,193	2,372	2,806	18,971	19,824	-4.3
Ohio	439	441	16,685	15,051	1,990	2,106	16,262	14,744	10.3
Oklahoma	34	31	1,212	1,141	152	149	1,179	1,121	5.1
<b>Pennsylvania Total</b>	<b>1,198</b>	<b>1,157</b>	<b>46,078</b>	<b>45,452</b>	<b>5,393</b>	<b>5,547</b>	<b>44,900</b>	<b>44,662</b>	<b>0.5</b>
Anthracite	23	28	1,081	1,070	102	135	1,058	1,050	0.8
Bituminous	1,176	1,129	44,997	44,383	5,292	5,412	43,842	43,612	0.5
Tennessee	49	47	1,798	1,798	220	225	1,749	1,764	-0.8
Texas	733	818	27,486	28,099	3,434	3,808	26,847	27,413	-2.1
Utah	445	396	17,263	16,345	2,011	1,897	16,830	16,048	4.9
Virginia	451	432	16,309	18,602	2,043	2,062	15,876	18,286	-13.2
Washington	--	--	--	--	--	--	--	--	--
<b>West Virginia Total</b>	<b>2,952</b>	<b>2,848</b>	<b>109,455</b>	<b>106,494</b>	<b>13,369</b>	<b>13,596</b>	<b>106,611</b>	<b>104,435</b>	<b>2.1</b>
Northern	766	763	29,768	29,809	3,465	3,647	29,028	29,226	-0.7
Southern	2,186	2,085	79,687	76,685	9,905	9,949	77,583	75,210	3.2
Wyoming	9,361	9,138	310,581	304,757	40,655	39,636	302,443	297,058	1.8
<b>Appalachian Total</b>	<b>7,177</b>	<b>6,923</b>	<b>268,139</b>	<b>262,622</b>	<b>32,407</b>	<b>33,125</b>	<b>261,157</b>	<b>257,715</b>	<b>1.3</b>
<b>Interior Total</b>	<b>2,681</b>	<b>2,829</b>	<b>101,471</b>	<b>101,888</b>	<b>12,314</b>	<b>13,160</b>	<b>98,977</b>	<b>99,721</b>	<b>-0.7</b>
<b>Western Total</b>	<b>12,527</b>	<b>12,242</b>	<b>424,990</b>	<b>417,975</b>	<b>55,144</b>	<b>54,342</b>	<b>413,890</b>	<b>407,923</b>	<b>1.5</b>
<b>East of Miss. River</b>	<b>8,996</b>	<b>8,796</b>	<b>337,671</b>	<b>332,873</b>	<b>40,708</b>	<b>41,968</b>	<b>328,953</b>	<b>326,587</b>	<b>0.7</b>
<b>West of Miss. River</b>	<b>13,389</b>	<b>13,198</b>	<b>456,929</b>	<b>449,612</b>	<b>59,157</b>	<b>58,659</b>	<b>445,071</b>	<b>438,772</b>	<b>1.4</b>
Bituminous and Lignite	22,362	21,966	793,519	781,415	99,763	100,493	772,966	764,308	1.1
Anthracite	23	28	1,081	1,070	102	135	1,058	1,050	0.8
<b>U.S. Total</b>	<b>22,385</b>	<b>21,994</b>	<b>794,600</b>	<b>782,485</b>	<b>99,865</b>	<b>100,627</b>	<b>774,024</b>	<b>765,359</b>	<b>1.1</b>
Railroad Cars Loaded	148,207	144,548	5,254,235	5,086,992	--	--	--	--	--



Volume 76 No. 36

**OUTPUT FOR WEEK ENDED - Sep 06, 2008**

Sep 10, 2008

The net available amount of electric energy distributed by the Total Electric Utility Industry+ for the week ended Saturday, **Sep 06, 2008** was **84,412** gigawatthours (GWh), according to the Edison Electric Institute. This is equivalent to **185** on the weekly electric output index.

**WEEKLY ELECTRIC OUTPUT BY GEOGRAPHIC DIVISION**  
(48 CONTIGUOUS STATES)

	Week Ended September 06		52 Weeks Ended September 06	
	GWh Output	% Increase Over Corresponding Week of 2007	GWh Output	% Increase Over Corresponding Period of 2007
New England	2,697	-0.3	132,463	-0.4
Mid-Atlantic	9,777	1.5	454,591	0.7
Central Industrial	14,529	-4.2	713,487	0.0
West Central	6,775	-9.8	346,590	-0.7
Southeast	22,826	-4.5	1,098,146	0.4
South Central	12,201	-6.1	609,613	2.7
Rocky Mountain	5,991	-10.2	276,226	1.9
Pacific Northwest	2,764	1.7	167,347	6.6
Pacific Southwest	6,852	-4.9	287,593	-2.1
Total United States	84,412	-4.6	4,086,057	0.7

**WEEKLY ELECTRIC OUTPUT IN PREVIOUS WEEKS--GWh**

Week Ended	2008	Week Ended	2007	% Inc. (08/07)	52 Weeks Ended	2008	% Inc. (08/07)
Aug 16	84,228	Aug 18	94,455	-10.8	Aug 16	4,102,207	1.7
Aug 23	85,978	Aug 25	93,569	-8.1	Aug 23	4,094,616	1.4
Aug 30	85,889	Sep 01	90,365	-5.0	Aug 30	4,090,140	1.1
Sep 06	84,412	Sep 08	88,495	-4.6	Sep 06	4,086,057	0.7
Sep 06	2,860,765	Sep 08	2,875,321	-0.5	YEAR TO DATE, FIRST 36 WEEKS		

**WEEKLY ELECTRIC OUTPUT INDEX--TOTAL U.S.\***  
SEASONALLY ADJUSTED 1982 = 100

Week Ended	2008	Week Ended	2007	Week Ended	2006
Aug 16	172	Aug 18	189	Aug 19	179
Aug 23	178	Aug 25	189	Aug 26	181
Aug 30	178	Sep 01	183	Sep 02	171
Sep 06	185	Sep 08	188	Sep 09	167

\* Excludes Alaska and Hawaii.

+ Includes investor-owned companies, cooperatives and government-owned utilities.

Copyright © 2008 Edison Electric Institute. All rights reserved.

**WEEKLY ELECTRIC OUTPUT BY GEOGRAPHIC DIVISION  
(48 CONTIGUOUS STATES)**

	Week Ended			NMA CUMULATIVE JANUARY WEEK ONE TO			52 Weeks Ended		
	6-Sep 2008 GWh Output	8-Sep 2007 GWh Output	% Increase Over Corresponding Week of 2007	6-Sep 2008 GWh Output	8-Sep 2007 GWh Output	% Increase Over Corresponding Week of 2007	6-Sep 2008 GWh Output	8-Sep 2007 GWh Output	% Increase Over Corresponding Week of 2007
<b>New England</b>	2,697	2,704	-0.3%	<b>92,244</b>	<b>94,227</b>	<b>-2.1%</b>	132,463	132,963	-0.4%
<b>Mid-Atlantic</b>	9,777	9,632	1.5%	<b>318,071</b>	<b>322,147</b>	<b>-1.3%</b>	454,591	451,264	0.7%
<b>Central Industrial</b>	14,529	15,163	-4.2%	<b>498,011</b>	<b>506,661</b>	<b>-1.7%</b>	713,487	713,757	0.0%
<b>West Central</b>	6,775	7,515	-9.8%	<b>242,938</b>	<b>248,561</b>	<b>-2.3%</b>	346,590	349,204	-0.7%
<b>Southeast</b>	22,826	23,893	-4.5%	<b>765,984</b>	<b>774,498</b>	<b>-1.1%</b>	1,098,146	1,093,323	0.4%
<b>South Central</b>	12,201	12,994	-6.1%	<b>434,890</b>	<b>423,414</b>	<b>2.7%</b>	609,613	593,569	2.7%
<b>Rocky Mountain</b>	5,991	6,672	-10.2%	<b>190,334</b>	<b>191,537</b>	<b>-0.6%</b>	276,226	271,033	1.9%
<b>Pacific Northwest</b>	2,764	2,719	1.7%	<b>116,068</b>	<b>107,800</b>	<b>7.7%</b>	167,347	156,934	6.6%
<b>Pacific Southwest</b>	6,852	7,203	-4.9%	<b>202,227</b>	<b>206,474</b>	<b>-2.1%</b>	287,593	293,899	-2.1%
<b>Total United States *</b>	84,412	88,495	-4.6%	<b>2,860,767</b>	<b>2,875,319</b>	<b>-0.5%</b>	4,086,056	4,055,946	0.7%

Notes: EEI output data are an estimate of electricity load made available for distribution derived as weekly net generation + purchases from non-utilities + net imports - exports - sales for resale. It is not meant to be a measure of electricity generation for the U.S. EEI survey data represent the majority of national distribution (large utilities, large government power projects, some independent and large municipal power projects). The remaining segment of the industry (smaller producers) is estimated. Non-utility generation is captured via direct sales to utilities.

\* Excludes Alaska and Hawaii

\*\* Less than one-tenth of one percent

SOURCE: Edison Electric Institute (EEI), *Weekly Electric Output Report*.

AMERICAN IRON AND STEEL INSTITUTE  
 1140 Connecticut Avenue, Suite 705  
 Washington, D.C. 20036

September 8, 2008

**ESTIMATED WEEKLY RAW STEEL \* PRODUCTION**

Period	Thousand Net Tons	Percent Change from Previous Period	Percent Capability Utilization**	Production by District		
				Week Ending Sep. 30	Week Ending Aug. 30	
<b><u>Week Ending</u></b>				North East Coast	193	190
				Pgh/Youngstown	175	172
				Lake Erie	97	94
				Detroit	87	82
				Indiana/Chicago	495	529
				Midwest	267	257
				Southern	659	668
				Western	89	95
				<b>Total</b>	<b>2,062</b>	<b>2,087</b>
<b><u>Year-to-Date+</u></b>						
September 6, 2008	2,062	-1.2	86.4			
September 6, 2007	2,047	0.8	86.5			
August 30, 2008	2,087	-1.8	87.5			
September 6, 2008	75,538	2.5	88.6			
September 6, 2007	73,759	-	86.1			

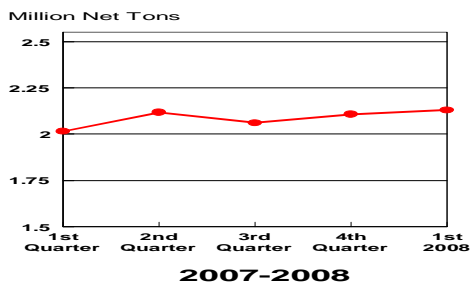
\*Raw steel production tonnage included in this report is estimated based on a sampling of steel producers. Therefore, this report should be used primarily to assess production trends. The AISI production report "AIS 7," produced monthly and available by subscription, provides a more accurate summary of steel production based on data supplied by companies representing approximately 75% of U.S. production capacity.

+ Includes revisions for previous months

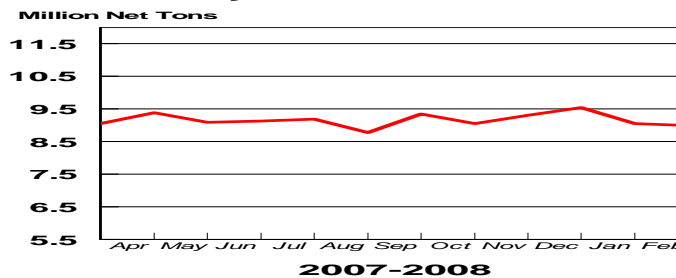
NOTE: Capability for the Third Quarter 2008 is approximately 31.4 million net tons vs 30.1 million net tons for the same period last year, and 31.0 million tons for the second quarter of 2008.

Capability -	2004 approx.	2.2 million tons/week
	2005	2.3
	2006	2.4
	2007	2.4
	2008	2.4

**Average Weekly Raw Steel Production**

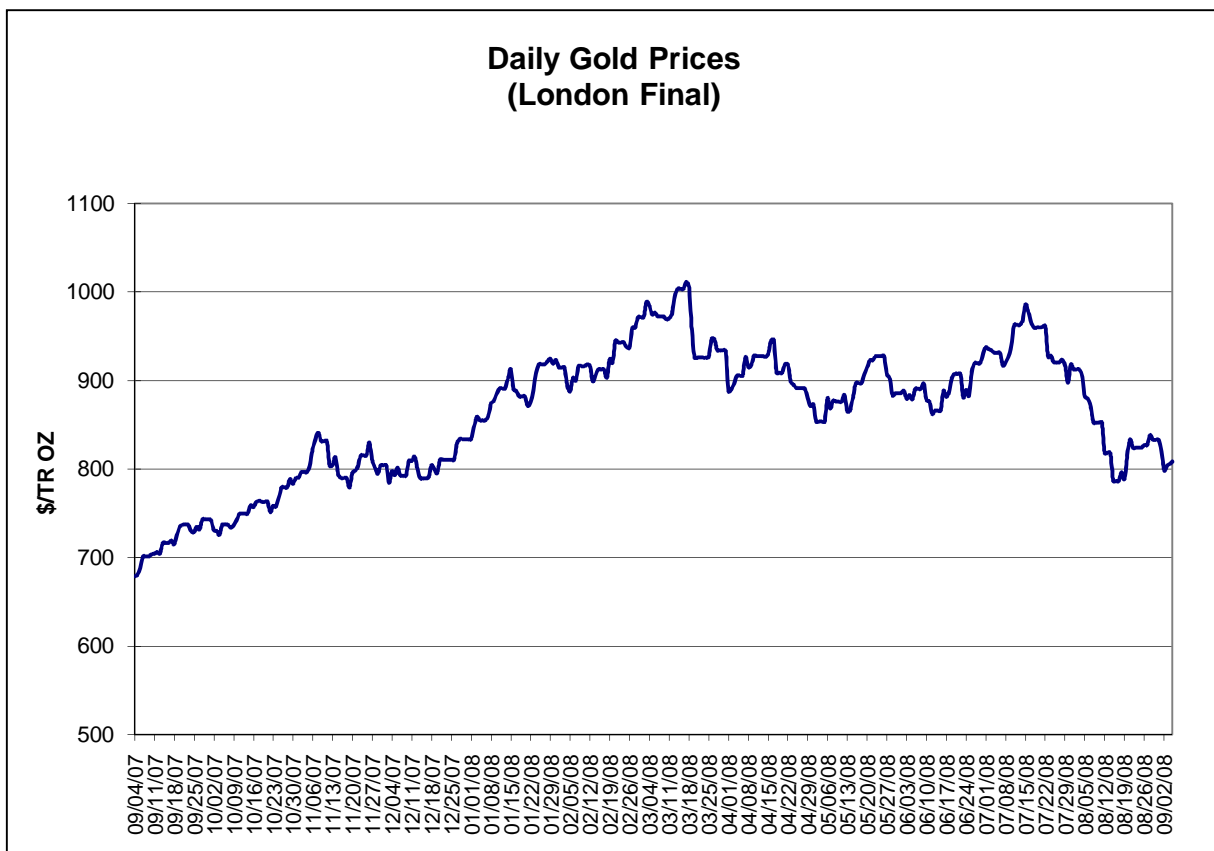
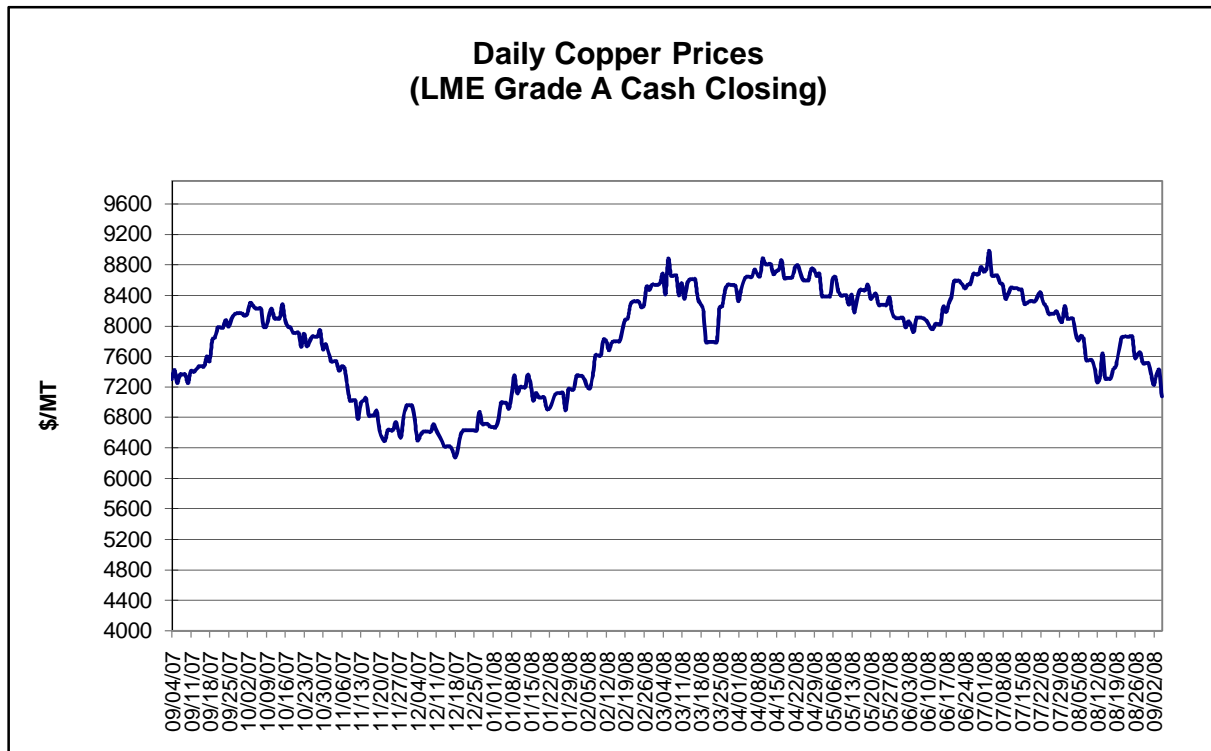


**Monthly Raw Steel Production**



\*Steel in the first solid state after melting suitable for further processing or sale, including ingots, steel for castings and strand or pressure cast blooms, slabs, or other product forms.

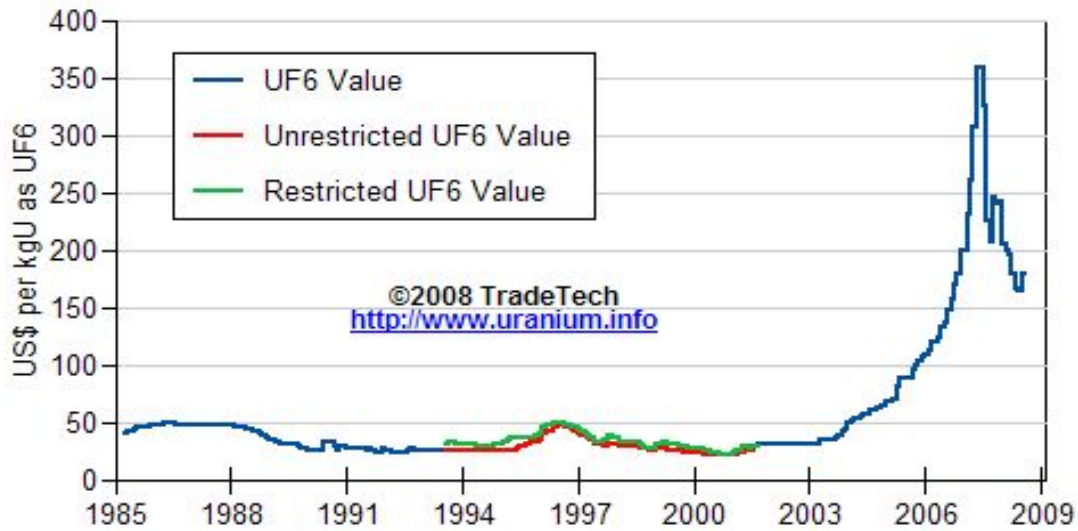
\*\* Based on tonnage capability to produce raw steel for a sustained full order book.



Data reflect closings on weekends and holidays.

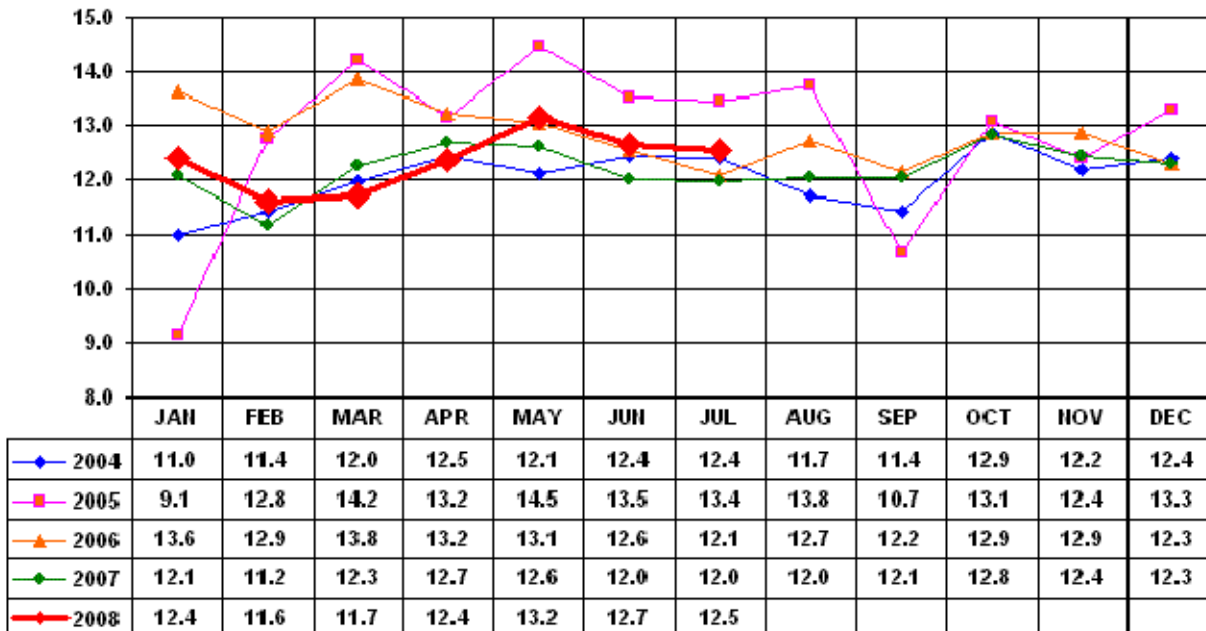
Source: Platts Metals Week

### Trade Tech's Uranium (UF6) Monthly Spot Prices (US\$/kg as UF6)



Source: Trade Tech, Uranium Info Website – <http://www.uranium.info>

### Coal and Coke Monthly Tonnage Indicator for Internal U.S. Waterways

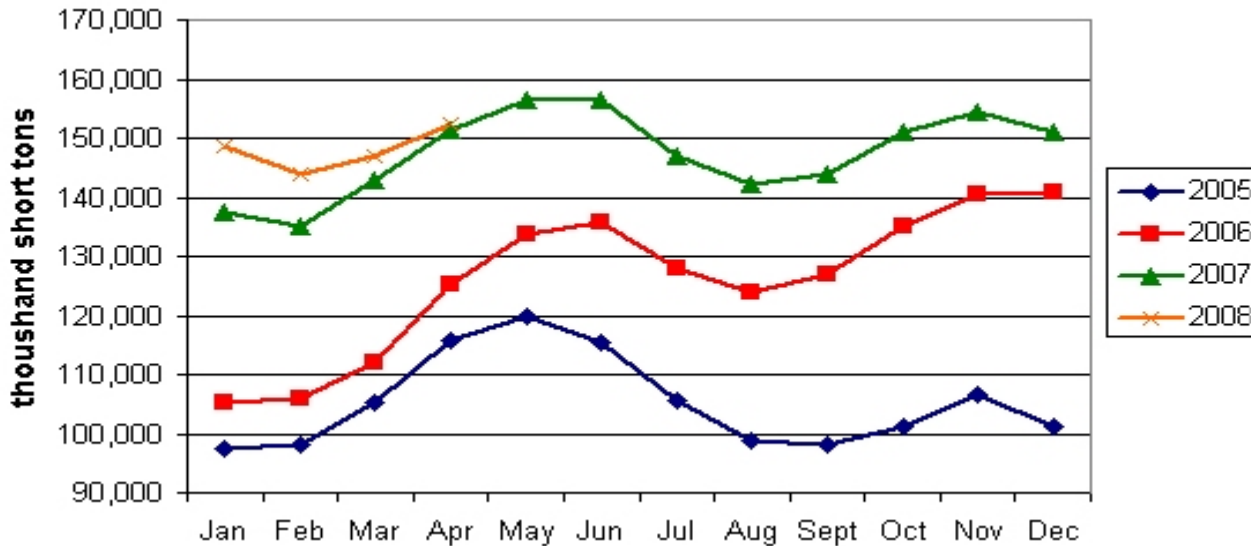


Source: U.S. Army Corps of Engineers, Waterborne Commerce Statistics Center

Average Weekly Coal Commodity Spot Prices (Dollars per Short Ton)					
Week Ended	Central Appalachia 12,500 Btu, 1.2 SO2	Northern Appalachia 13,000 Btu, <3.0 SO2	Illinois Basin 11,800 Btu, 5.0 SO2	Powder River Basin 8,800 Btu, 0.8 SO2	Uinta Basin 11,700 Btu, 0.8 SO2
01-Aug-08	\$140.00	\$149.00	\$71.00	\$12.50	\$62.00
08-Aug-08	\$140.00	\$146.00	\$95.00	\$12.50	\$62.00
15-Aug-08	\$140.00	\$145.00	\$93.00	\$12.50	\$62.00
22-Aug-08	\$140.00	\$144.00	\$93.00	\$11.00	\$62.00
29-Aug-08	\$140.00	\$144.00	\$83.00	\$11.00	\$62.00
05-Sep-08	\$140.00	\$140.00	\$83.00	\$11.00	\$61.00

Source: Energy Information Administration (from Platts *Coal Outlook*, "Weekly Price Survey")

### EIA Electric Power Sector Coal Stocks



Source: Energy Information Administration

<b>USGS Production of Selected Mineral Commodities</b>	<b>2008 Year to Date - 2nd Quarter</b>	<b>2007 Year to Date - 2nd Quarter</b>	<b>Percent Change</b>
Aluminum, secondary (000 Mt.)	445.0	477.0	-7%
Cement (Mil. Mt.)	41.1	43.7	-6%
Gypsum (Mil. Mt.)	9.4	10.9	-14%
Iron Ore (Mil. Mt.)	26.8	25.1	7%
Phosphate rock (Mil. Mt.)	15.3	14.7	4%
Sand & gravel, construction (Mil. Mt.)	477.0	533.0	-11%
Soda ash (Mil. Mt.)	5.6	5.5	2%
Stone, crushed (Mil. Mt.)	664.0	730.0	-9%
Zinc (000 Mt.)	420.0	365.0	15%

Source: U.S. Geological Survey, Mineral Industry Surveys, *U.S. Production of Selected Mineral Commodities in the Second Quarter 2008*, August 2008