
National Mining Association

Weekly Statistical Summary

September 14, 2007 Edition
(Data for Week Ending September 8, 2007)

Prepared by
National Mining Association



Suite 500 East, 101 Constitution Avenue, NW
Washington, DC, 20001
Phone (202) 463-2600
Visit us at <http://www.nma.org>

NMA Weekly Statistical Summary

Vol. 45, No. 36
Dated 09/14/07

PRODUCTION, CONSUMPTION & TRADE						
	Week Ended			Cumulative Jan 1 to		
	09/08/07	09/09/06	% Chng	09/08/07	09/09/06	% Chng
EIA Coal Production (000 Tons):						
Week Ended/Year to Date	22,149	22,279	-0.6%	787,200	802,240	-1.9%
52 Weeks Ended	1,143,724	1,151,180	-0.6%			
Month Ended -- August						
	August 07/06		% Chng	Jan - August 07/06		% Chng
	101,462	100,644	0.8%	763,335	777,128	-1.8%
MONTH ENDED AND CUMULATIVE NUMBERS ARE PRELIMINARY AND SUBJECT TO CHANGE						
DOC Bituminous Coal Trade (000 Tons)						
Exports:	June 07/06		% Chng	Jan - June 07/06		% Chng
Metallurgical	2,893	2,496	15.9%	14,642	13,721	6.7%
Steam	2,195	1,847	18.8%	10,993	9,335	17.8%
Imports:	3,027	2,185	38.5%	17,191	16,914	1.6%
EI Electric Output (Mil. Kwh)						
	Week Ended			Cumulative Jan 1 to		
	09/08/07	09/09/06	% Chng	09/08/07	09/09/06	% Chng
EI Electric Output (Mil. Kwh)	88,495	78,027	13.4%	2,875,321	2,808,241	2.4%
AISI Raw Steel Output (000 Tons)	2,092	2,147	-2.6%	73,080	77,044	-5.1%
EIA U.S. PETROLEUM DATA						
4-Week Averages 000 Barrels per Day						
PETROLEUM SUPPLY:	Week Ending			Cumulative Daily Averages		
	09/07/07	09/07/06	% Chng	2007	2006	% Chng
Domestic Crude	5,108	5,162	-1.0	5,178	5,105	1.4
Net Imports (Incl. SPR)	10,085	10,556	-4.5	10,022	10,095	-0.7
SPR Stocks W/D or Added	-6	0	--	-7	-13	--
Other Stocks W/D or added	449	-14	--	-56	-31	--
Natural Gas Liquids Prod.	2,392	2,261	5.8	2,365	2,194	7.8



NMA
THE AMERICAN RESOURCE

National Mining Association Web Site: [http:// www.nma.org](http://www.nma.org)

EIA Estimated Weekly U.S. Coal Production Overview (Thousand Short Tons)

Coal-Producing Region and State	Week Ended			Year To Date			52 Weeks Ended		
	9/8/2007	9/1/2007	9/9/2006	9/8/2007	9/8/2006	Percent Change	9/8/2007	9/9/2006	Percent Change
Alabama	382	397	345	14,036	13,429	4.5	19,572	19,500	0.4
Alaska	26	27	24	1,058	962	10.0	1,521	1,329	14.5
Arizona	147	153	163	5,454	5,640	-3.3	8,010	9,131	-12.3
Arkansas	1	1	s	32	12	161.7	43	13	217.9
Colorado	730	759	720	24,918	24,438	2.0	36,718	35,642	3.0
Illinois	616	641	645	23,857	22,359	6.7	33,644	31,587	6.5
Indiana	679	706	678	24,805	24,480	1.3	35,975	35,263	2.0
Kansas	9	9	9	307	250	22.5	481	301	59.5
Kentucky Total	2,209	2,299	2,255	80,851	84,881	-4.7	116,111	121,588	-4.5
Eastern	1,658	1,725	1,748	60,515	66,072	-8.4	87,363	94,490	-7.5
Western	551	574	507	20,336	18,809	8.1	28,748	27,098	6.1
Louisiana	102	71	86	2,139	2,790	-23.3	3,454	4,071	-15.2
Maryland	99	103	118	2,895	4,015	-27.9	3,929	5,545	-29.1
Mississippi	87	64	71	2,574	2,699	-4.7	3,661	3,802	-3.7
Missouri	6	6	4	192	306	-37.1	280	508	-44.9
Montana	769	800	820	27,914	28,328	-1.5	41,307	40,841	1.1
New Mexico	480	500	481	16,656	17,469	-4.7	25,034	26,539	-5.7
North Dakota	502	522	608	19,409	20,491	-5.3	29,234	30,189	-3.2
Ohio	456	474	429	16,202	15,751	2.9	23,111	23,442	-1.4
Oklahoma	38	40	36	1,308	1,431	-8.6	1,871	2,021	-7.4
Pennsylvania Total	1,169	1,216	1,178	44,634	46,200	-3.4	64,377	67,491	-4.6
Anthracite	26	27	30	1,013	1,053	-3.8	1,471	1,610	-8.7
Bituminous	1,143	1,189	1,148	43,622	45,147	-3.4	62,905	65,880	-4.5
Tennessee	54	56	54	1,962	1,979	-0.9	2,786	2,937	-5.2
Texas	877	912	947	30,238	31,354	-3.6	44,291	46,424	-4.6
Utah	444	462	446	16,410	17,836	-8.0	24,567	25,390	-3.2
Virginia	549	571	564	20,001	20,911	-4.4	28,901	29,161	-0.9
Washington	0	0	52	0	1,992	-100.0	578	3,444	-83.2
West Virginia Total	2,823	2,937	2,815	105,817	106,760	-0.9	150,632	153,338	-1.8
Northern	874	909	754	32,306	30,437	6.1	44,529	43,660	2.0
Southern	1,949	2,027	2,062	73,511	76,323	-3.7	106,103	109,678	-3.3
Wyoming	8,896	8,791	8,728	303,532	305,476	-0.6	443,640	431,682	2.8
Appalachian Total	7,190	7,480	7,252	266,062	275,117	-3.3	380,669	395,904	-3.8
Interior Total	2,965	3,023	2,983	105,788	104,491	1.2	152,447	151,090	0.9
Western Total	11,994	12,014	12,044	415,350	422,633	-1.7	610,608	604,186	1.1
East of Miss. River	9,123	9,464	9,153	337,634	343,464	-1.7	482,697	493,654	-2.2
West of Miss. River	13,026	13,053	13,126	449,566	458,776	-2.0	661,027	657,525	0.5
Bituminous and Lignite	22,122	22,490	22,249	786,187	801,187	-1.9	1,142,253	1,149,569	-0.6
Anthracite	26	27	30	1,013	1,053	-3.8	1,471	1,610	-8.7
U.S. Total	22,149	22,517	22,279	787,200	802,240	-1.9	1,143,724	1,151,180	-0.6
Railroad Cars Loaded	144,548	147,552	145,979	5,086,992	5,152,576	-1.3	7,389,773	7,347,133	0.6

Source: Energy Information Administration

EIA Estimated Monthly U.S. Coal Production Overview (Thousand Short Tons)

Coal-Producing Region and State	Week Ended		Year to Date		Month Ended		January - August		Percent Change
	9/8/2007	9/9/2006	9/8/2007	9/8/2006	August 2007	August 2006	2007	2006	
Alabama	382	345	14,036	13,429	1,837	1,603	13,651	13,069	4.5
Alaska	26	24	1,058	962	125	113	1,032	933	10.6
Arizona	147	163	5,454	5,640	708	763	5,307	5,463	-2.9
Arkansas	1	s	32	12	3	2	32	12	165.9
Colorado	730	720	24,918	24,438	3,418	3,254	24,108	23,609	2.1
Illinois	616	645	23,857	22,359	2,934	2,967	23,215	21,612	7.4
Indiana	679	678	24,805	24,480	3,241	3,125	24,103	23,741	1.5
Kansas	9	9	307	250	41	43	298	241	23.7
Kentucky Total	2,209	2,255	80,851	84,881	10,576	10,421	78,588	82,328	-4.5
Eastern	1,658	1,748	60,515	66,072	7,952	8,091	58,829	64,093	-8.2
Western	551	507	20,336	18,809	2,624	2,329	19,759	18,235	8.4
Louisiana	102	86	2,139	2,790	319	383	2,030	2,690	-24.5
Maryland	99	118	2,895	4,015	475	548	2,795	3,877	-27.9
Mississippi	87	71	2,574	2,699	330	328	2,480	2,621	-5.4
Missouri	6	4	192	306	28	16	187	302	-38.2
Montana	769	820	27,914	28,328	3,590	3,696	27,049	27,381	-1.2
New Mexico	480	481	16,656	17,469	2,301	2,227	16,166	16,949	-4.6
North Dakota	502	608	19,409	20,491	2,417	2,829	18,907	19,854	-4.8
Ohio	456	429	16,202	15,751	2,176	1,977	15,730	15,288	2.9
Oklahoma	38	36	1,308	1,431	185	169	1,269	1,392	-8.8
Pennsylvania Total	1,169	1,178	44,634	46,200	5,607	5,456	43,445	44,914	-3.3
Anthracite	26	30	1,013	1,053	126	140	987	1,020	-3.2
Bituminous	1,143	1,148	43,622	45,147	5,481	5,316	42,459	43,895	-3.3
Tennessee	54	54	1,962	1,979	259	250	1,908	1,916	-0.4
Texas	877	947	30,238	31,354	4,081	4,254	29,243	30,279	-3.4
Utah	444	446	16,410	17,836	2,124	2,061	15,955	17,317	-7.9
Virginia	549	564	20,001	20,911	2,619	2,599	19,432	20,276	-4.2
Washington	0	52	0	1,992	0	243	0	1,939	-100.0
West Virginia Total	2,823	2,815	105,817	106,760	13,478	12,976	102,897	103,612	-0.7
Northern	874	754	32,306	30,437	4,178	3,478	31,406	29,549	6.3
Southern	1,949	2,062	73,511	76,323	9,300	9,499	71,492	74,063	-3.5
Wyoming	8,896	8,728	303,532	305,476	38,587	38,341	293,508	295,515	-0.7
Appalachian Total	7,190	7,252	266,062	275,117	34,404	33,501	258,688	267,044	-3.1
Interior Total	2,965	2,983	105,788	104,491	13,787	13,616	102,616	101,124	1.5
Western Total	11,994	12,044	415,350	422,633	53,271	53,526	402,031	408,960	-1.7
East of Miss. River	9,123	9,153	337,634	343,464	43,534	42,251	328,245	333,253	-1.5
West of Miss. River	13,026	13,126	449,566	458,776	57,929	58,393	435,090	443,875	-2.0
Bituminous and Lignite	22,122	22,249	786,187	801,187	101,336	100,504	762,349	776,108	-1.8
Anthracite	26	30	1,013	1,053	126	140	987	1,020	-3.2
U.S. Total	22,149	22,279	787,200	802,240	101,462	100,644	763,335	777,128	-1.8
Railroad Cars Loaded	144,548	145,979	5,086,992	5,152,576	--	--	--	--	--

Source: Energy Information Administration



WEEKLY ELECTRIC OUTPUT

Essential Energy Information from EEI's Statistics Department

Volume 75 No. 36

OUTPUT FOR WEEK ENDED - Sep 08, 2007

Sep 12, 2007

The net available amount of electric energy distributed by the Total Electric Utility Industry+ for the week ended Saturday, **Sep 08, 2007** was **88,495** gigawatthours (GWh), according to the Edison Electric Institute. This is equivalent to **188** on the weekly electric output index.

WEEKLY ELECTRIC OUTPUT BY GEOGRAPHIC DIVISION

(48 CONTIGUOUS STATES)

	Week Ended September 08		52 Weeks Ended September 08	
	GWh Output	% Increase Over Corresponding Week of 2006	GWh Output	% Increase Over Corresponding Period of 2006
New England	2,704	10.8	132,963	-0.5
Mid-Atlantic	9,632	15.9	451,264	0.4
Central Industrial	15,163	19.6	713,757	1.6
West Central	7,515	16.6	349,204	0.8
Southeast	23,893	13.7	1,093,323	1.4
South Central	12,994	10.0	593,569	-1.1
Rocky Mountain	6,672	14.3	271,033	4.9
Pacific Northwest	2,719	5.1	156,934	3.9
Pacific Southwest	7,203	4.5	293,899	0.8
Total United States	88,495	13.4	4,055,947	1.1

WEEKLY ELECTRIC OUTPUT IN PREVIOUS WEEKS--GWh

Week Ended	2007	Week Ended	2006	% Inc. (07/06)	52 Weeks Ended	2007	% Inc. (07/06)
Aug 18	94,455	Aug 19	88,941	6.2	Aug 18	4,034,651	0.5
Aug 25	93,569	Aug 26	89,030	5.1	Aug 25	4,039,190	0.6
Sep 01	90,365	Sep 02	84,076	7.5	Sep 01	4,045,478	0.8
Sep 08	88,495	Sep 09	78,027	13.4	Sep 08	4,055,947	1.1
Sep 08	2,875,321	Sep 09	2,808,241	2.4	YEAR TO DATE, FIRST 36 WEEKS		

WEEKLY ELECTRIC OUTPUT INDEX--TOTAL U.S.*

SEASONALLY ADJUSTED 1982 = 100

Week Ended	2007	Week Ended	2006	Week Ended	2005
Aug 18	189	Aug 19	179	Aug 20	178
Aug 25	189	Aug 26	181	Aug 27	177
Sep 01	183	Sep 02	171	Sep 03	181
Sep 08	188	Sep 09	167	Sep 10	160

* Excludes Alaska and Hawaii.

+ Includes investor-owned companies, cooperatives and government-owned utilities.

Copyright © 2007 Edison Electric Institute. All rights reserved.

WEEKLY ELECTRIC OUTPUT BY GEOGRAPHIC DIVISION (48 CONTIGUOUS STATES)

	Week Ended			NMA CUMULATIVE JANUARY 1 to			52 Weeks Ended		
	8-Sep	9-Sep	% Increase Over Corresponding Week of 2006	8-Sep	9-Sep	% Increase Over Corresponding Week of 2006	8-Sep	9-Sep	% Increase Over Corresponding Week of 2006
	2007	2006		2007	2006		2007	2006	
	GWh Output	GWh Output		GWh Output	GWh Output		GWh Output	GWh Output	
New England	2,704	2,440	10.8%	94,227	93,088	1.2%	132,963	133,581	-0.5%
Mid-Atlantic	9,632	8,311	15.9%	322,147	314,632	2.4%	451,264	449,512	0.4%
Central Industrial	15,163	12,683	19.6%	506,661	487,791	3.9%	713,757	702,544	1.6%
West Central	7,515	6,443	16.6%	248,561	243,507	2.1%	349,204	346,489	0.8%
Southeast	23,893	21,016	13.7%	774,498	753,266	2.8%	1,093,323	1,078,524	1.4%
South Central	12,994	11,813	10.0%	423,414	428,216	-1.1%	593,569	599,912	-1.1%
Rocky Mountain	6,672	5,839	14.3%	191,537	181,126	5.7%	271,033	258,483	4.9%
Pacific Northwest	2,719	2,586	5.1%	107,800	102,240	5.4%	156,934	151,113	3.9%
Pacific Southwest	<u>7,203</u>	<u>6,896</u>	4.5%	<u>206,474</u>	<u>204,378</u>	1.0%	<u>293,899</u>	<u>291,452</u>	0.8%
Total United States *	88,495	78,027	13.4%	2,875,319	2,808,244	2.4%	4,055,946	4,011,610	1.1%

Notes: EEI output data are an estimate of electricity load made available for distribution derived as weekly net generation + purchases from non-utilities + net imports - exports - sales for resale. It is not meant to be a measure of electricity generation for the U.S. EEI survey data represent the majority of national distribution (large utilities, large government power projects, some independent and large municipal power projects). The remaining segment of the industry (smaller producers) is estimated. Non-utility generation is captured via direct sales to utilities.

* Excludes Alaska and Hawaii

** Less than one-tenth of one percent

SOURCE: Edison Electric Institute (EEI), *Weekly Electric Output Report*.

AMERICAN IRON AND STEEL INSTITUTE
 1140 Connecticut Avenue, Suite 705
 Washington, D.C. 20036

September 10, 2007

ESTIMATED WEEKLY RAW STEEL* PRODUCTION

<u>Period</u>	<u>Thousand Net Tons</u>	<u>Percent Change from Previous Period</u>	<u>Percent Capability Utilization**</u>	<u>Production by District</u>	
				<u>Week Ending</u>	
<u>Week Ending</u>				<u>Sep 8</u>	<u>Sep 1</u>
Sept 8, 2007	2,092	1.4	88.4	149	131
Sept 8, 2006	2,147	-2.5	91.2	202	204
Sept 1, 2007	2,062	-2.4	87.1	111	98
				124	127
				546	522
				252	243
				617	647
				<u>91</u>	<u>90</u>
				2092	2062

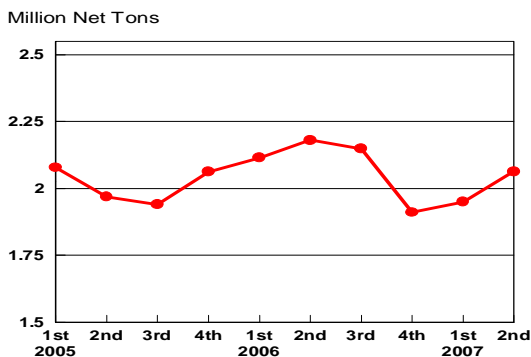
*Raw steel production tonnage included in this report is estimated based on a sampling of steel producers. Therefore, this report should be used primarily to assess production trends. The AISI production report "AIS 7," produced monthly and available by subscription, provides a more accurate summary of steel production based on data supplied by companies representing approximately 75% of U.S. production capacity.

+Includes revisions for previous months

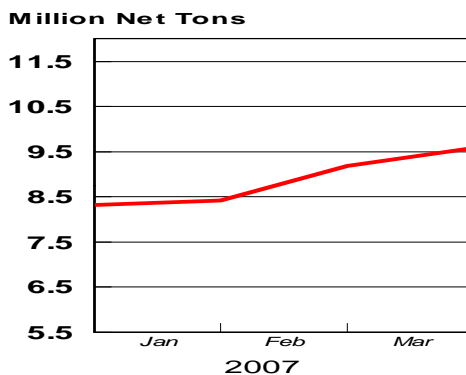
NOTE: Capability for the First Quarter 2007 is approximately 31.2 million net tons vs 30.5 million net tons for the same period last year, and 30.7 million tons for the fourth quarter of 2006.

Capability -	2003 approx.	2004	2005	2006	2007
	2.3 million tons/week	2.2	2.3	2.4	2.4

Average Weekly Raw Steel Production

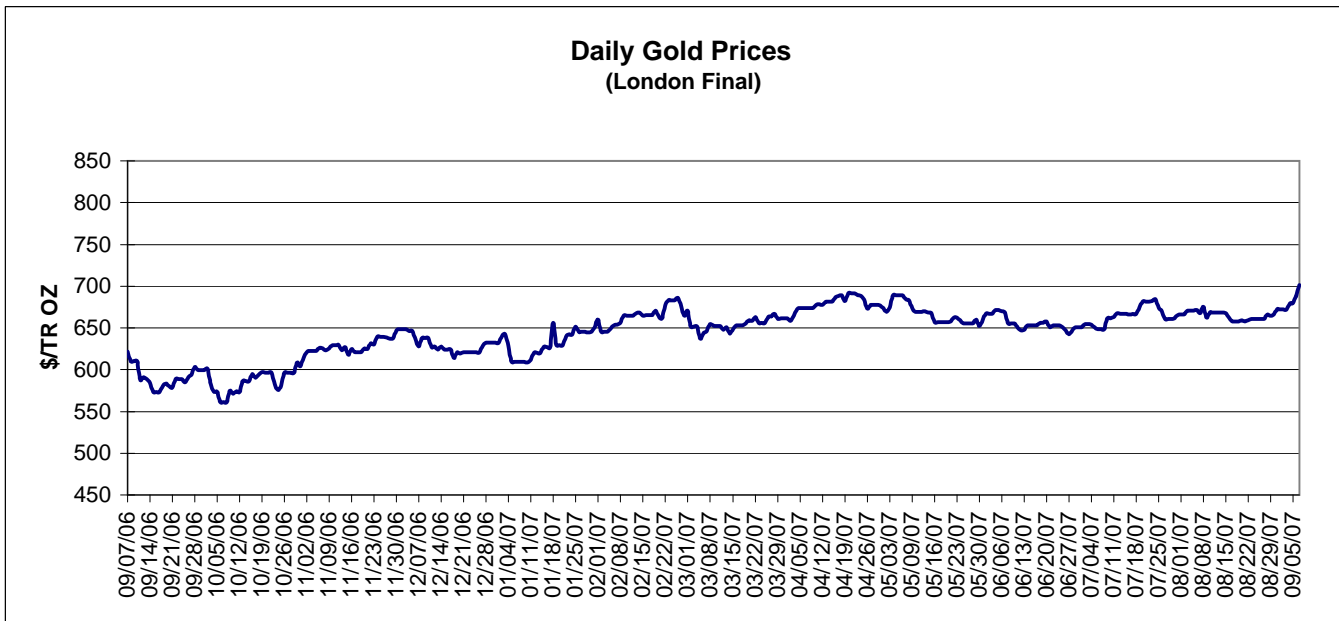
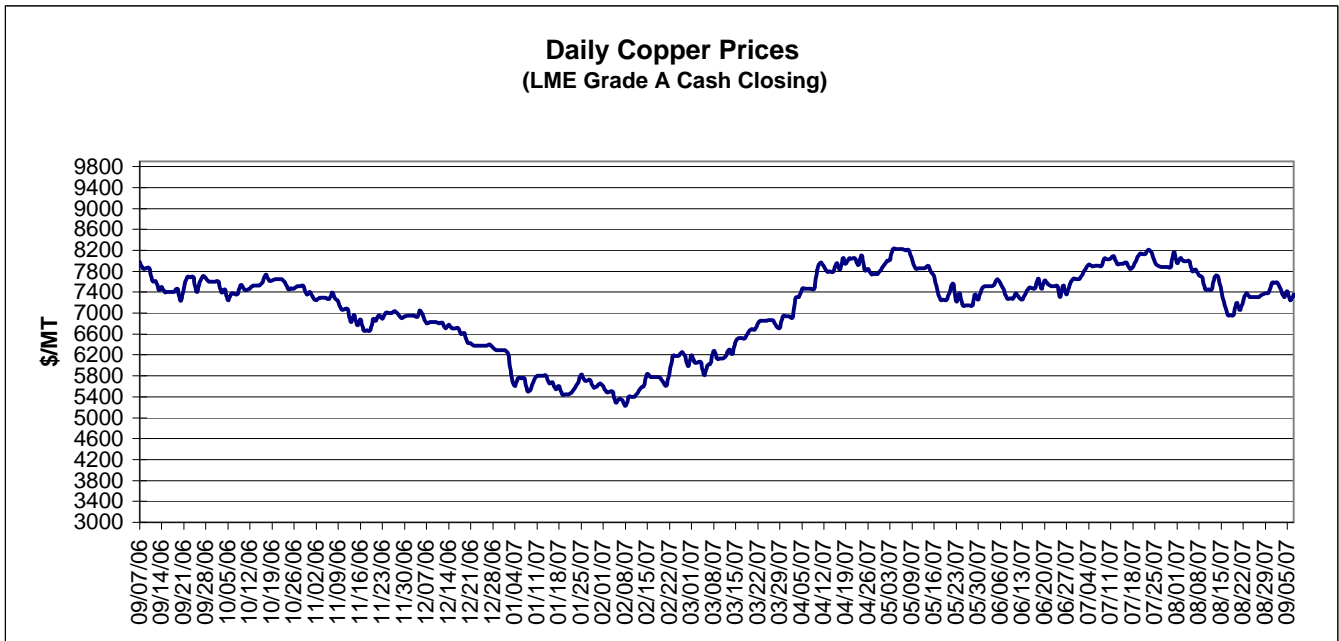


MONTHLY RAW STEEL PRODUCTION



*Steel in the first solid state after melting suitable for further processing or sale, including ingots, steel for castings and strand or pressure cast blooms, slabs, or other product forms.

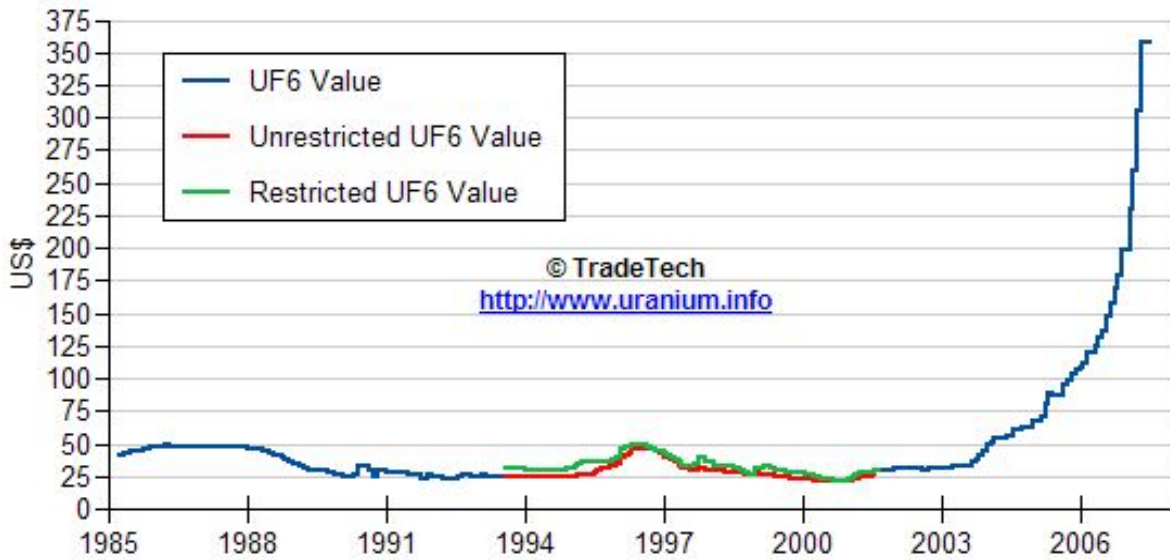
** Based on tonnage capability to produce raw steel for a sustained full order book.



Data reflect closings on weekends and holidays.

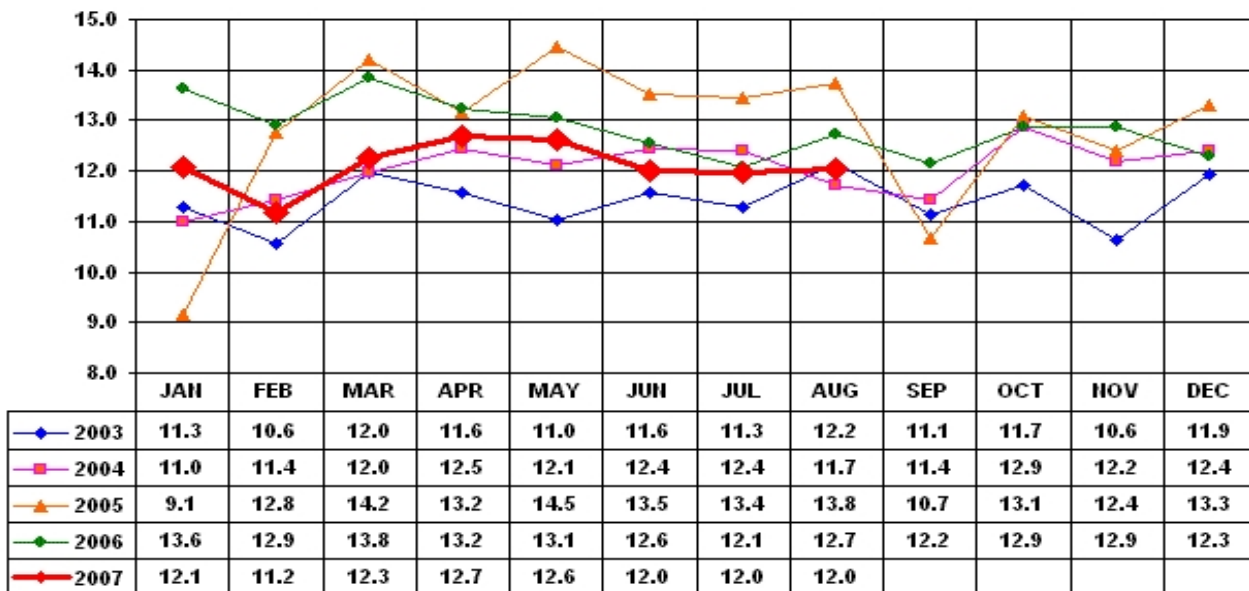
Source: Platts Metals Week

Trade Tech's Uranium (UF6) Monthly Spot Prices (US\$/kg as UF6)



Source: Trade Tech, Uranium Info Website – <http://www.uranium.info>

Coal and Coke Monthly Tonnage Indicator for Internal U.S. Waterways



Source: U.S. Army Corps of engineers, Waterborne Commerce Statistics Center