

---

National Mining Association

# Weekly Statistical Summary

September 19, 2008 Edition  
(Data for Week Ending September 13, 2008)

Prepared by  
National Mining Association



Suite 500 East, 101 Constitution Avenue, NW  
Washington, DC, 20001  
Phone (202) 463-2600  
Visit us at <http://www.nma.org>

# NMA Weekly Statistical Summary

Vol. 46, No. 37  
Dated 09/19/08

PRODUCTION, CONSUMPTION & TRADE						
	Week Ended			* Cumulative Jan 1 to		
	09/13/08	09/15/07	% Chng	09/13/08	09/13/07	% Chng
<b>EIA Coal Production (000 Tons):</b>						
Week Ended/Year to Date	23,259	22,092	5.3%	815,316	805,743	1.2%
52 Weeks Ended	1,150,771	1,146,713	0.4%			
* Due to leap year, 2008 cumulative reflects one extra day of tonnage.						
	August 08/07			Jan - Aug 08/07		
Month Ended -- August	09/13/08	09/15/07	% Chng	09/13/08	09/13/07	% Chng
Month Ended -- August	99,865	100,627	-0.8%	774,024	765,359	1.1%
MONTH ENDED AND CUMULATIVE NUMBERS ARE PRELIMINARY AND SUBJECT TO CHANGE						
DOC Bituminous Coal Trade (000 Tons)						
	July 08/07			Jan - July 08/07		
	09/13/08	09/15/07	% Chng	09/13/08	09/15/07	% Chng
<b>Exports:</b>						
Metallurgical	2,948	3,247	-9.2%	24,608	17,889	37.6%
Steam	3,437	2,532	35.7%	20,339	13,525	50.4%
<b>Imports:</b>						
Imports	2,569	3,373	-23.8%	19,191	20,564	-6.7%
	Week Ended			* Cumulative Jan 1 to		
	09/13/08	09/15/07	% Chng	09/13/08	09/15/07	% Chng
<b>EI Electric Output (Mil. Kwh)</b>	80,537	81,556	-1.2%	2,941,302	2,956,877	-0.5%
<b>AISI Raw Steel Output (000 Tons)</b>	2,055	2,047	0.4%	77,593	75,806	2.4%
EIA U.S. PETROLEUM DATA						
4-Week Averages						
000 Barrels per Day						
	Week Ending			Cumulative Daily Averages		
	09/12/08	09/12/07	% Chng	2008	2007	% Chng
<b>PETROLEUM SUPPLY:</b>						
Domestic Crude	4,519	4,902	-7.8	5,063	5,087	-0.5
Net Imports (Incl. SPR)	9,199	10,274	-10.5	9,774	10,035	-2.6
SPR Stocks W/D or Added	0	-34	--	-40	-11	--
Other Stocks W/D or added	508	440	--	-15	-19	--
Natural Gas Liquids Prod.	2,335	3,400	-2.7	2,265	2,371	-4.5



**NMA**

THE AMERICAN RESOURCE National Mining Association Web Site: [http:// www.nma.org](http://www.nma.org)

## EIA Estimated Weekly U.S. Coal Production Overview (Thousand Short Tons)

Coal-Producing Region and State	Week Ended			Year to Date		Percent Change	52 Weeks Ended		Percent Change
	9/13/2008	9/6/2008	9/15/2007	9/13/2008	9/13/2007		9/13/2008	9/15/2007	
Alabama	385	363	375	14,578	13,710	6.3	20,313	18,971	7.1
Alaska	28	26	13	989	937	5.6	1,373	1,378	-0.3
Arizona	157	148	163	5,301	5,759	-8.0	7,492	8,180	-8.4
Arkansas	1	1	2	41	58	-28.1	66	68	-2.7
Colorado	809	761	731	25,073	25,671	-2.3	35,593	36,932	-3.6
Illinois	596	561	598	21,620	24,861	-13.0	29,481	34,663	-14.9
Indiana	700	659	714	24,826	24,862	-0.1	34,810	35,345	-1.5
Kansas	6	6	8	212	303	-29.9	329	469	-29.9
<b>Kentucky Total</b>	<b>2,375</b>	<b>2,235</b>	<b>2,225</b>	<b>84,620</b>	<b>82,225</b>	<b>2.9</b>	<b>117,449</b>	<b>115,990</b>	<b>1.3</b>
Eastern	1,793	1,687	1,672	63,832	62,220	2.6	88,524	87,963	0.6
Western	582	548	553	20,788	20,005	3.9	28,925	28,026	3.2
Louisiana	75	84	71	2,709	1,970	37.5	3,847	3,255	18.2
Maryland	41	39	41	1,637	1,573	4.1	2,357	2,495	-5.6
Mississippi	70	51	34	2,290	2,570	-10.9	3,256	3,629	-10.3
Missouri	4	4	4	155	163	-4.8	227	248	-8.3
Montana	838	789	900	29,852	29,337	1.8	43,660	42,140	3.6
New Mexico	496	466	413	17,306	17,266	0.2	24,404	25,241	-3.3
North Dakota	564	530	609	20,208	20,894	-3.3	28,799	30,221	-4.7
Ohio	467	439	461	17,581	15,561	13.0	24,494	22,135	10.7
Oklahoma	36	34	32	1,037	1,178	-11.9	1,501	1,710	-12.3
<b>Pennsylvania Total</b>	<b>1,274</b>	<b>1,198</b>	<b>1,208</b>	<b>46,640</b>	<b>46,793</b>	<b>-0.3</b>	<b>64,783</b>	<b>65,631</b>	<b>-1.3</b>
Anthracite	24	23	29	1,056	1,102	-4.2	1,517	1,539	-1.4
Bituminous	1,250	1,176	1,179	45,584	45,691	-0.2	63,266	64,092	-1.3
Tennessee	52	49	49	1,758	1,850	-4.9	2,553	2,628	-2.8
Texas	779	733	854	26,659	28,959	-7.9	39,412	42,286	-6.8
Utah	473	445	414	16,881	16,780	0.6	24,320	24,572	-1.0
Virginia	479	451	451	16,979	19,086	-11.0	23,255	27,515	-15.5
Washington	--	--	--	--	--	--	0	525	-100.0
<b>West Virginia Total</b>	<b>3,137</b>	<b>2,952</b>	<b>2,974</b>	<b>113,270</b>	<b>109,701</b>	<b>3.3</b>	<b>156,437</b>	<b>152,773</b>	<b>2.4</b>
Northern	814	766	797	29,391	30,635	-4.1	40,801	42,122	-3.1
Southern	2,323	2,186	2,177	83,879	79,066	6.1	115,635	110,651	4.5
Wyoming	9,416	9,361	8,747	323,093	313,678	3.0	460,560	447,713	2.9
<b>Appalachian Total</b>	<b>7,628</b>	<b>7,177</b>	<b>7,231</b>	<b>276,275</b>	<b>270,494</b>	<b>2.1</b>	<b>382,716</b>	<b>380,112</b>	<b>0.7</b>
<b>Interior Total</b>	<b>2,850</b>	<b>2,681</b>	<b>2,872</b>	<b>100,337</b>	<b>104,927</b>	<b>-4.4</b>	<b>141,854</b>	<b>149,700</b>	<b>-5.2</b>
<b>Western Total</b>	<b>12,781</b>	<b>12,527</b>	<b>11,990</b>	<b>438,705</b>	<b>430,322</b>	<b>1.9</b>	<b>626,201</b>	<b>616,902</b>	<b>1.5</b>
<b>East of Miss. River</b>	<b>9,576</b>	<b>8,996</b>	<b>9,131</b>	<b>345,798</b>	<b>342,792</b>	<b>0.9</b>	<b>479,188</b>	<b>481,776</b>	<b>-0.5</b>
<b>West of Miss. River</b>	<b>13,682</b>	<b>13,389</b>	<b>12,961</b>	<b>469,518</b>	<b>462,951</b>	<b>1.4</b>	<b>671,583</b>	<b>664,937</b>	<b>1.0</b>
Bituminous and Lignite	23,235	22,362	22,063	814,260	804,641	1.2	1,149,254	1,145,174	0.4
Anthracite	24	23	29	1,056	1,102	-4.2	1,517	1,539	-1.4
<b>U.S. Total</b>	<b>23,259</b>	<b>22,385</b>	<b>22,092</b>	<b>815,316</b>	<b>805,743</b>	<b>1.2</b>	<b>1,150,771</b>	<b>1,146,713</b>	<b>0.4</b>
<b>Railroad Cars Loaded</b>	<b>156,846</b>	<b>148,207</b>	<b>146,299</b>	<b>5,411,081</b>	<b>5,233,291</b>	<b>3.4</b>	<b>7,581,822</b>	<b>7,386,269</b>	<b>2.6</b>

Source: Energy Information Administration



## WEEKLY ELECTRIC OUTPUT

Essential Energy Information from EEI's Statistics Department

Volume 76 No. 37

### OUTPUT FOR WEEK ENDED - Sep 13, 2008

Sep 17, 2008

The net available amount of electric energy distributed by the Total Electric Utility Industry\* for the week ended Saturday, **Sep 13, 2008** was **80,537** gigawatthours (GWh), according to the Edison Electric Institute. This is equivalent to **179** on the weekly electric output index.

### WEEKLY ELECTRIC OUTPUT BY GEOGRAPHIC DIVISION

(48 CONTIGUOUS STATES)

	Week Ended September 13		52 Weeks Ended September 13	
	GWh Output	% Increase Over Corresponding Week of 2007	GWh Output	% Increase Over Corresponding Period of 2007
New England	2,469	-2.0	132,412	-0.5
Mid-Atlantic	8,864	-4.0	454,226	0.4
Central Industrial	12,901	-3.2	713,061	-0.2
West Central	6,329	0.7	346,635	-0.7
Southeast	22,913	1.1	1,098,396	0.3
South Central	12,392	-0.5	609,546	2.8
Rocky Mountain	5,373	-8.8	275,704	1.4
Pacific Northwest	2,849	5.2	167,490	6.7
Pacific Southwest	6,447	-0.4	287,568	-2.2
Total United States	80,537	-1.2	4,085,038	0.6

### WEEKLY ELECTRIC OUTPUT IN PREVIOUS WEEKS--GWh

Week Ended	2008	Week Ended	2007	% Inc. (08/07)	52 Weeks Ended	2008	% Inc. (08/07)
Aug 23	85,978	Aug 25	93,569	-8.1	Aug 23	4,094,616	1.4
Aug 30	85,889	Sep 01	90,365	-5.0	Aug 30	4,090,140	1.1
Sep 06	84,412	Sep 08	88,495	-4.6	Sep 06	4,086,057	0.7
Sep 13	80,537	Sep 15	81,556	-1.2	Sep 13	4,085,038	0.6
Sep 13	2,941,302	Sep 15	2,956,877	-0.5	YEAR TO DATE, FIRST 37 WEEKS		

### WEEKLY ELECTRIC OUTPUT INDEX--TOTAL U.S.\*

SEASONALLY ADJUSTED 1982 = 100

Week Ended	2008	Week Ended	2007	Week Ended	2006
Aug 23	178	Aug 25	189	Aug 26	181
Aug 30	178	Sep 01	183	Sep 02	171
Sep 06	185	Sep 08	188	Sep 09	167
Sep 13	179	Sep 15	175	Sep 16	168

\* Excludes Alaska and Hawaii.

+ Includes investor-owned companies, cooperatives and government-owned utilities.

Copyright © 2008 Edison Electric Institute. All rights reserved.

### WEEKLY ELECTRIC OUTPUT BY GEOGRAPHIC DIVISION (48 CONTIGUOUS STATES)

	Week Ended			NMA CUMULATIVE JANUARY WEEK ONE TO			52 Weeks Ended		
	13-Sep 2008 GWh Output	15-Sep 2007 GWh Output	% Increase Over Corresponding Week of 2007	13-Sep 2008 GWh Output	15-Sep 2007 GWh Output	% Increase Over Corresponding Week of 2007	13-Sep 2008 GWh Output	15-Sep 2007 GWh Output	% Increase Over Corresponding Week of 2007
<b>New England</b>	2,469	2,520	-2.0%	<b>94,713</b>	<b>96,747</b>	<b>-2.1%</b>	132,412	133,094	-0.5%
<b>Mid-Atlantic</b>	8,864	9,228	-3.9%	<b>326,935</b>	<b>331,375</b>	<b>-1.3%</b>	454,226	452,402	0.4%
<b>Central Industrial</b>	12,901	13,328	-3.2%	<b>510,912</b>	<b>519,989</b>	<b>-1.7%</b>	713,061	714,319	-0.2%
<b>West Central</b>	6,329	6,284	0.7%	<b>249,267</b>	<b>254,845</b>	<b>-2.2%</b>	346,635	349,073	-0.7%
<b>Southeast</b>	22,913	22,663	1.1%	<b>788,897</b>	<b>797,161</b>	<b>-1.0%</b>	1,098,396	1,095,168	0.3%
<b>South Central</b>	12,392	12,459	-0.5%	<b>447,282</b>	<b>435,873</b>	<b>2.6%</b>	609,546	593,213	2.8%
<b>Rocky Mountain</b>	5,373	5,895	-8.9%	<b>195,707</b>	<b>197,432</b>	<b>-0.9%</b>	275,704	271,841	1.4%
<b>Pacific Northwest</b>	2,849	2,707	5.2%	<b>118,917</b>	<b>110,507</b>	<b>7.6%</b>	167,490	157,019	6.7%
<b>Pacific Southwest</b>	6,447	6,472	-0.4%	<b>208,674</b>	<b>212,946</b>	<b>-2.0%</b>	287,568	294,016	-2.2%
<b>Total United States *</b>	<u>80,537</u>	<u>81,556</u>	-1.2%	<b><u>2,941,304</u></b>	<b><u>2,956,875</u></b>	<b>-0.5%</b>	4,085,038	4,060,145	0.6%

**Notes:** EEI output data are an estimate of electricity load made available for distribution derived as weekly net generation + purchases from non-utilities + net imports - exports - sales for resale. It is not meant to be a measure of electricity generation for the U.S. EEI survey data represent the majority of national distribution (large utilities, large government power projects, some independent and large municipal power projects). The remaining segment of the industry (smaller producers) is estimated. Non-utility generation is captured via direct sales to utilities.

\* Excludes Alaska and Hawaii

\*\* Less than one-tenth of one percent

SOURCE: Edison Electric Institute (EEI), *Weekly Electric Output Report*.

AMERICAN IRON AND STEEL INSTITUTE  
 1140 Connecticut Avenue, Suite 705  
 Washington, D.C. 20036

September 15, 2008

**ESTIMATED WEEKLY RAW STEEL \* PRODUCTION**

<u>Period</u>	Thousand <u>Net Tons</u>	Percent Change from Previous <u>Period</u>	Percent Capability <u>Utilization**</u>	<u>Production by District</u>		
				<u>Week Ending</u>		
				<u>Sep. 13</u>	<u>Sep. 6</u>	
<b><u>Week Ending</u></b>				North East Coast	188	193
				Pgh/Youngstown	166	175
September 13, 2008	2,055	-0.4	86.4	Lake Erie	94	97
September 13, 2007	2,047	0.4	86.5	Detroit	85	87
September 6, 2008	2,062	-1.2	86.4	Indiana/Chicago	519	495
				Midwest	266	267
<b><u>Year-to-Date+</u></b>				Southern	644	659
September 13, 2008	77,593	2.4	88.6	Western	<u>93</u>	<u>89</u>
September 13, 2007	75,806	-	86.1	Total	2,055	2,062

\*Raw steel production tonnage included in this report is estimated based on a sampling of steel producers. Therefore, this report should be used primarily to assess production trends. The AISI production report "AIS 7," produced monthly and available by subscription, provides a more accurate summary of steel production based on data supplied by companies representing approximately 75% of U.S. production capacity.

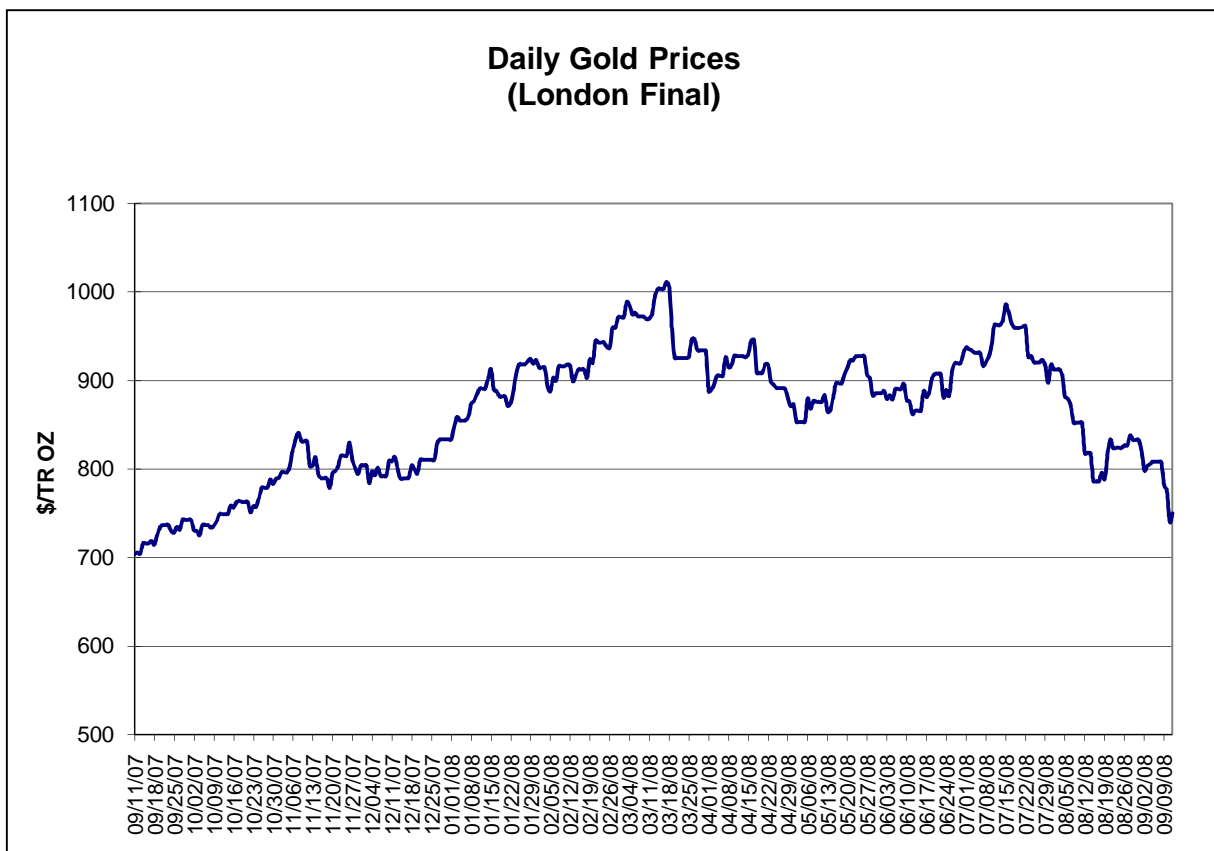
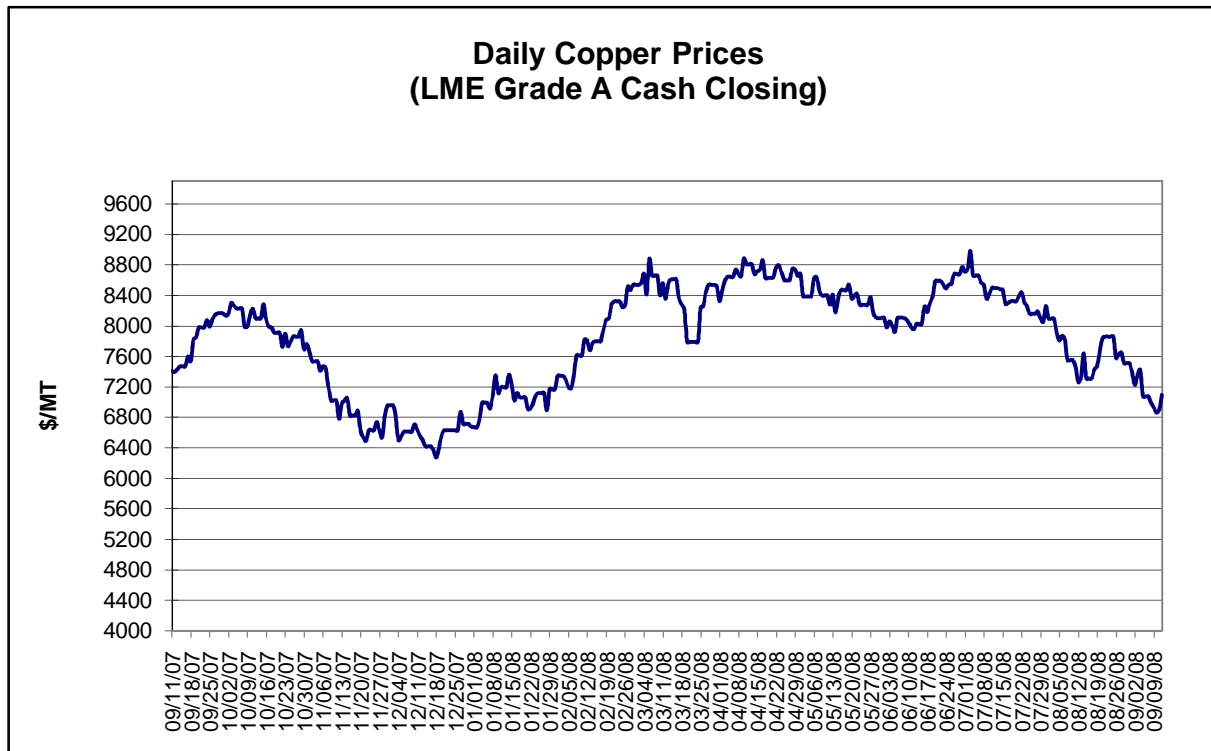
+ Includes revisions for previous months

NOTE: Capability for the Third Quarter 2008 is approximately 31.4 million net tons vs 30.1 million net tons for the same period last year, and 31.0 million tons for the second quarter of 2008

Capability -	2004 approx.	2.2 million tons/week
	2005	2.3
	2006	2.4
	2007	2.4
	2008	2.4

\*Steel in the first solid state after melting suitable for further processing or sale, including ingots, steel for castings and strand or pressure cast blooms, slabs, or other product forms.

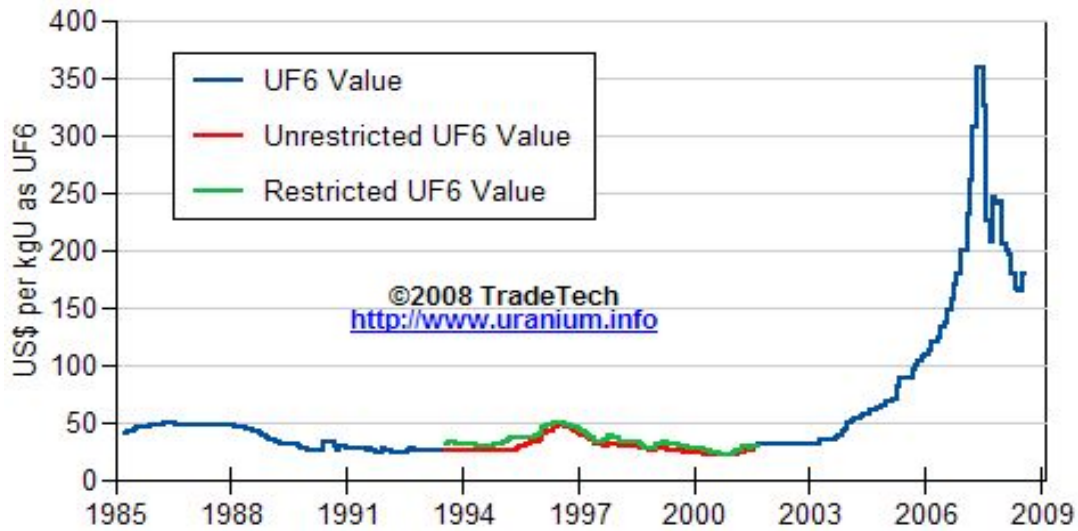
\*\* Based on tonnage capability to produce raw steel for a sustained full order book.



Data reflect closings on weekends and holidays.

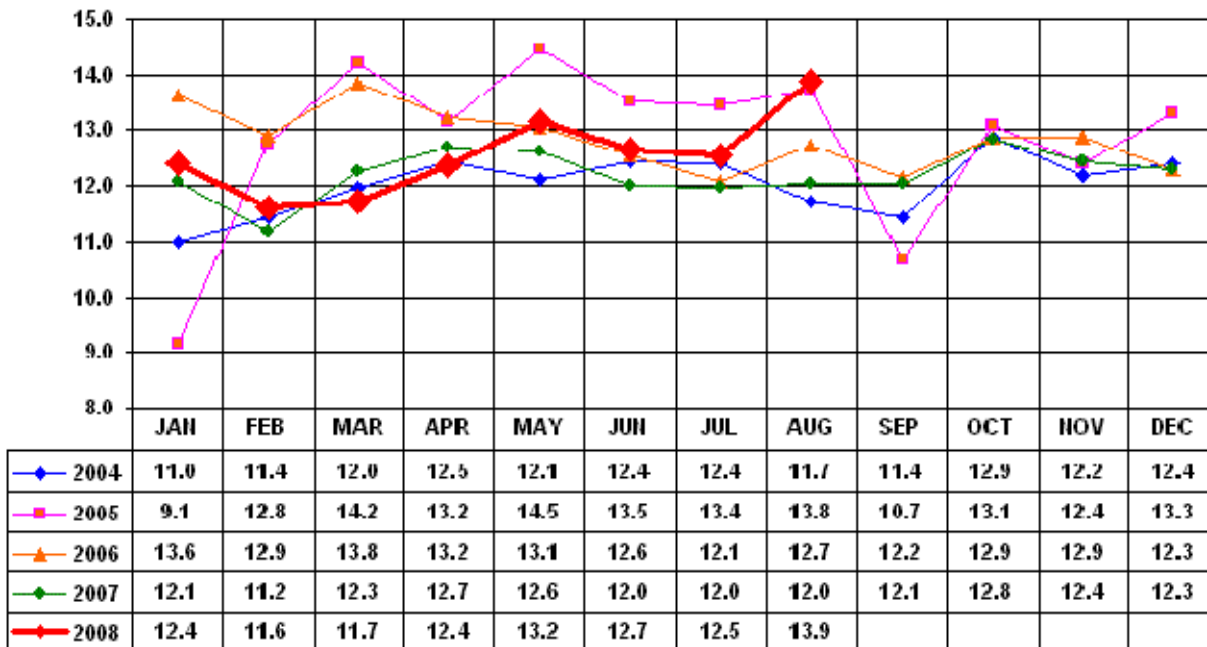
Source: Platts Metals Week

### Trade Tech's Uranium (UF6) Monthly Spot Prices (US\$/kg as UF6)



Source: Trade Tech, Uranium Info Website – <http://www.uranium.info>

### Coal and Coke Monthly Tonnage Indicator for Internal U.S. Waterways

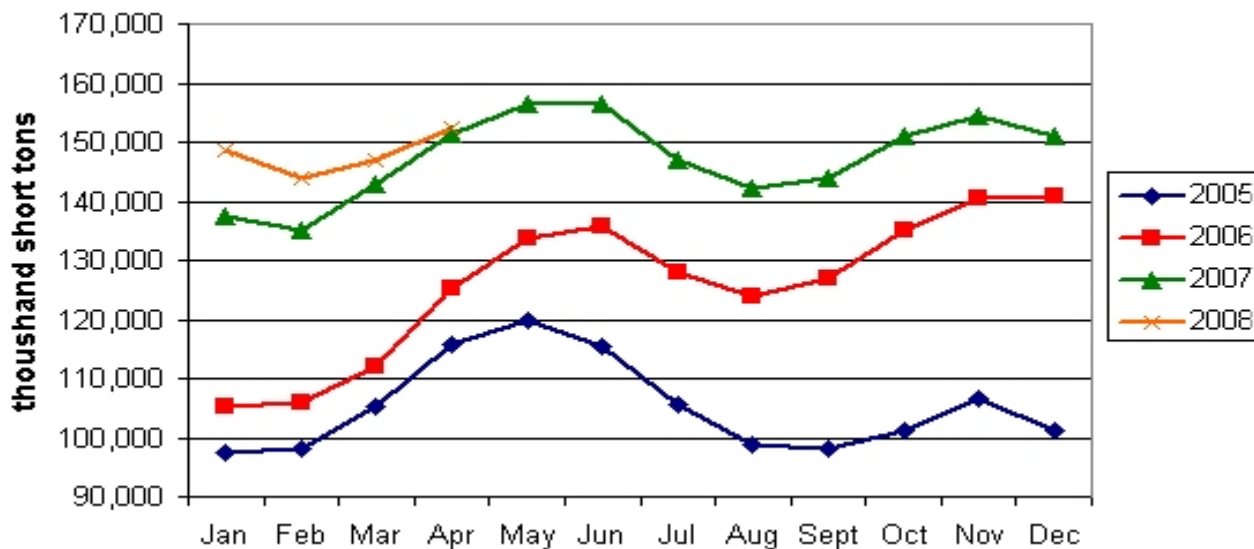


Source: U.S. Army Corps of Engineers, Waterborne Commerce Statistics Center

Average Weekly Coal Commodity Spot Prices (Dollars per Short Ton)					
Week Ended	Central Appalachia 12,500 Btu, 1.2 SO2	Northern Appalachia 13,000 Btu, <3.0 SO2	Illinois Basin 11,800 Btu, 5.0 SO2	Powder River Basin 8,800 Btu, 0.8 SO2	Uinta Basin 11,700 Btu, 0.8 SO2
08-Aug-08	\$140.00	\$146.00	\$95.00	\$12.50	\$62.00
15-Aug-08	\$140.00	\$145.00	\$93.00	\$12.50	\$62.00
22-Aug-08	\$140.00	\$144.00	\$93.00	\$11.00	\$62.00
29-Aug-08	\$140.00	\$144.00	\$83.00	\$11.00	\$62.00
05-Sep-08	\$140.00	\$140.00	\$83.00	\$11.00	\$61.00
12-Sep-08	\$140.00	\$140.00	\$83.00	\$11.00	\$61.00

Source: Energy Information Administration (from Platts *Coal Outlook*, "Weekly Price Survey")

### EIA Electric Power Sector Coal Stocks



Source: Energy Information Administration

<b>USGS Production of Selected Mineral Commodities</b>	<b>2008 Year to Date - 2nd Quarter</b>	<b>2007 Year to Date - 2nd Quarter</b>	<b>Percent Change</b>
Aluminum, secondary (000 Mt.)	445.0	477.0	-7%
Cement (Mil. Mt.)	41.1	43.7	-6%
Gypsum (Mil. Mt.)	9.4	10.9	-14%
Iron Ore (Mil. Mt.)	26.8	25.1	7%
Phosphate rock (Mil. Mt.)	15.3	14.7	4%
Sand & gravel, construction (Mil. Mt.)	477.0	533.0	-11%
Soda ash (Mil. Mt.)	5.6	5.5	2%
Stone, crushed (Mil. Mt.)	664.0	730.0	-9%
Zinc (000 Mt.)	420.0	365.0	15%

Source: U.S. Geological Survey, Mineral Industry Surveys, *U.S. Production of Selected Mineral Commodities in the Second Quarter 2008*, August 2008