
National Mining Association

Weekly Statistical Summary

September 21, 2007 Edition
(Data for Week Ending September 15, 2007)

Prepared by
National Mining Association



Suite 500 East, 101 Constitution Avenue, NW
Washington, DC, 20001
Phone (202) 463-2600
Visit us at <http://www.nma.org>

NMA Weekly Statistical Summary

Vol. 45, No. 37
Dated 09/21/07

PRODUCTION, CONSUMPTION & TRADE						
	Week Ended			Cumulative Jan 1 to		
	09/15/07	09/16/06	% Chng	09/15/07	09/16/06	% Chng
EIA Coal Production (000 Tons):						
Week Ended/Year to Date	22,272	22,213	0.3%	811,021	825,541	-1.8%
52 Weeks Ended	1,146,553	1,151,453	-0.4%			
Month Ended -- August						
	August 07/06		% Chng	Jan - August 07/06		% Chng
	101,462	100,644	0.8%	763,335	777,128	-1.8%
MONTH ENDED AND CUMULATIVE NUMBERS ARE PRELIMINARY AND SUBJECT TO CHANGE						
DOC Bituminous Coal Trade (000 Tons)						
Exports:	July 07/06			Jan - July 07/06		
			% Chng			% Chng
Metallurgical	3,247	1,483	118.9%	17,889	15,204	17.7%
Steam	2,532	1,847	37.1%	13,525	11,182	21.0%
Imports:	3,373	3,181	6.0%	20,564	20,095	2.3%
EI Electric Output (Mil. Kwh)						
	Week Ended			Cumulative Jan 1 to		
	09/15/07	09/16/06	% Chng	09/15/07	09/16/06	% Chng
EI Electric Output (Mil. Kwh)	81,556	77,357	5.4%	2,956,877	2,885,599	2.5%
AISI Raw Steel Output (000 Tons)	2,088	2,147	-2.7%	75,168	79,191	-5.1%
EIA U.S. PETROLEUM DATA						
4-Week Averages 000 Barrels per Day						
PETROLEUM SUPPLY:	Week Ending			Cumulative Daily Averages		
	09/14/07	09/14/06	% Chng	2007	2006	% Chng
Domestic Crude	5,088	5,170	-1.6	5,174	5,108	1.3
Net Imports (Incl. SPR)	9,832	10,596	-7.5	10,015	10,111	-0.9
SPR Stocks W/D or Added	-23	0	--	-9	-13	--
Other Stocks W/D or added	655	-24	--	-40	-32	--
Natural Gas Liquids Prod.	2,357	2,331	1.1	2,364	2,202	7.4



NMA

THE AMERICAN RESOURCE

National Mining Association Web Site: [http:// www.nma.org](http://www.nma.org)

EIA Estimated Weekly U.S. Coal Production Overview (Thousand Short Tons)

Coal-Producing Region and State	Week Ended			Year To Date			52 Weeks Ended		
	9/15/2007	9/8/2007	9/16/2006	9/15/2007	9/15/2006	Percent Change	9/15/2007	9/16/2006	Percent Change
Alabama	399	382	351	13,923	13,835	0.6	19,108	19,456	-1.8
Alaska	27	26	25	1,086	987	10.0	1,524	1,337	14.0
Arizona	154	147	168	5,697	5,828	-2.2	8,086	9,069	-10.8
Arkansas	1	1	s	43	13	236.8	53	14	286.0
Colorado	762	730	732	26,196	25,177	4.0	37,263	35,594	4.7
Illinois	643	616	656	25,177	23,034	9.3	34,845	31,641	10.1
Indiana	709	679	678	25,313	24,771	2.2	35,639	34,822	2.3
Kansas	9	9	9	318	261	21.4	482	307	57.2
Kentucky Total	2,308	2,209	2,306	82,859	87,787	-5.6	116,148	122,065	-4.8
Eastern	1,732	1,658	1,790	62,510	68,435	-8.7	87,903	94,961	-7.4
Western	576	551	516	20,349	19,351	5.2	28,244	27,104	4.2
Louisiana	77	102	48	2,056	2,842	-27.7	3,323	4,045	-17.8
Maryland	103	99	120	2,243	4,139	-45.8	3,156	5,570	-43.3
Mississippi	34	87	37	2,581	2,743	-5.9	3,632	3,770	-3.7
Missouri	6	6	4	181	310	-41.6	265	500	-47.0
Montana	804	769	835	28,558	29,164	-2.1	41,117	40,821	0.7
New Mexico	502	480	490	18,299	18,015	1.6	26,187	26,423	-0.9
North Dakota	524	502	619	20,117	21,205	-5.1	29,322	30,200	-2.9
Ohio	476	456	437	15,694	16,235	-3.3	22,166	23,395	-5.3
Oklahoma	40	38	37	1,267	1,472	-13.9	1,793	2,023	-11.4
Pennsylvania Total	1,221	1,169	1,200	47,114	47,574	-1.0	65,699	67,471	-2.6
Anthracite	27	26	31	1,085	1,107	-1.9	1,516	1,630	-7.0
Bituminous	1,194	1,143	1,169	46,029	46,468	-0.9	64,182	65,840	-2.5
Tennessee	56	54	55	1,934	2,035	-5.0	2,703	2,928	-7.7
Texas	916	877	963	29,849	32,333	-7.7	42,939	46,486	-7.6
Utah	464	444	454	17,396	18,303	-5.0	25,099	25,368	-1.1
Virginia	573	549	574	20,436	21,521	-5.0	28,765	29,182	-1.4
Washington	0	0	53	0	2,055	-100.0	525	3,383	-84.5
West Virginia Total	2,948	2,823	2,866	110,154	109,860	0.3	152,573	153,273	-0.5
Northern	913	874	753	32,525	31,062	4.7	43,839	43,461	0.9
Southern	2,035	1,949	2,113	77,629	78,798	-1.5	108,734	109,812	-1.0
Wyoming	8,516	8,896	8,496	312,531	314,041	-0.5	444,142	432,313	2.7
Appalachian Total	7,510	7,190	7,393	274,009	283,635	-3.4	382,073	396,236	-3.6
Interior Total	3,011	2,965	2,949	107,134	107,131	*	151,216	150,710	0.3
Western Total	11,752	11,994	11,871	429,878	434,775	-1.1	613,265	604,506	1.4
East of Miss. River	9,472	9,123	9,280	347,428	353,535	-1.7	484,433	493,572	-1.9
West of Miss. River	12,800	13,026	12,933	463,592	472,006	-1.8	662,120	657,880	0.6
Bituminous and Lignite	22,245	22,122	22,182	809,936	824,435	-1.8	1,145,037	1,149,822	-0.4
Anthracite	27	26	31	1,085	1,107	-1.9	1,516	1,630	-7.0
U.S. Total	22,272	22,149	22,213	811,021	825,541	-1.8	1,146,553	1,151,453	-0.4
Railroad Cars Loaded	146,299	144,548	149,803	5,233,291	5,302,379	-1.3	7,386,269	7,353,946	0.4

Source: Energy Information Administration



Volume 75 No. 37

OUTPUT FOR WEEK ENDED - Sep 15, 2007

Sep 19, 2007

The net available amount of electric energy distributed by the Total Electric Utility Industry+ for the week ended Saturday, **Sep 15, 2007** was **81,556** gigawatthours (GWh), according to the Edison Electric Institute. This is equivalent to **175** on the weekly electric output index.

WEEKLY ELECTRIC OUTPUT BY GEOGRAPHIC DIVISION
(48 CONTIGUOUS STATES)

	Week Ended September 15		52 Weeks Ended September 15	
	GWh Output	% Increase Over Corresponding Week of 2006	GWh Output	% Increase Over Corresponding Period of 2006
New England	2,520	5.5	133,094	0.0
Mid-Atlantic	9,228	14.1	452,402	1.0
Central Industrial	13,328	4.4	714,319	2.0
West Central	6,284	-2.1	349,073	1.0
Southeast	22,663	8.9	1,095,168	1.7
South Central	12,459	-2.8	593,213	-1.0
Rocky Mountain	5,895	15.9	271,841	5.0
Pacific Northwest	2,707	3.2	157,019	3.9
Pacific Southwest	6,472	1.8	294,016	0.7
Total United States	81,556	5.4	4,060,145	1.4

WEEKLY ELECTRIC OUTPUT IN PREVIOUS WEEKS--GWh

Week Ended	2007	Week Ended	2006	% Inc. (07/06)	52 Weeks Ended	2007	% Inc. (07/06)
Aug 25	93,569	Aug 26	89,030	5.1	Aug 25	4,039,190	0.6
Sep 01	90,365	Sep 02	84,076	7.5	Sep 01	4,045,478	0.8
Sep 08	88,495	Sep 09	78,027	13.4	Sep 08	4,055,947	1.1
Sep 15	81,556	Sep 16	77,357	5.4	Sep 15	4,060,145	1.4
Sep 15	2,956,877	Sep 16	2,885,599	2.5	YEAR TO DATE, FIRST 37 WEEKS		

WEEKLY ELECTRIC OUTPUT INDEX--TOTAL U.S.*
SEASONALLY ADJUSTED 1982 = 100

Week Ended	2007	Week Ended	2006	Week Ended	2005
Aug 25	189	Aug 26	181	Aug 27	177
Sep 01	183	Sep 02	171	Sep 03	181
Sep 08	188	Sep 09	167	Sep 10	160
Sep 15	175	Sep 16	168	Sep 17	189

* Excludes Alaska and Hawaii

+ Includes investor-owned companies, cooperatives and government-owned utilities.

Copyright © 2007 Edison Electric Institute. All rights reserved.

WEEKLY ELECTRIC OUTPUT BY GEOGRAPHIC DIVISION (48 CONTIGUOUS STATES)

	Week Ended			NMA CUMULATIVE JANUARY 1 to			52 Weeks Ended		
	15-Sep	16-Sep	% Increase Over Corresponding Week of 2006	15-Sep	16-Sep	% Increase Over Corresponding Week of 2006	15-Sep	16-Sep	% Increase Over Corresponding Week of 2006
	2007	2006		2007	2006		2007	2006	
	GWh	GWh		GWh	GWh		GWh	GWh	
	Output	Output		Output	Output		Output	Output	
New England	2,520	2,389	5.5%	96,747	95,477	1.3%	133,094	133,157	0.0%
Mid-Atlantic	9,228	8,090	14.1%	331,375	322,722	2.7%	452,402	447,831	1.0%
Central Industrial	13,328	12,766	4.4%	519,989	500,557	3.9%	714,319	700,604	2.0%
West Central	6,284	6,416	-2.1%	254,845	249,923	2.0%	349,073	345,690	1.0%
Southeast	22,663	20,818	8.9%	797,161	774,084	3.0%	1,095,168	1,076,946	1.7%
South Central	12,459	12,814	-2.8%	435,873	441,030	-1.2%	593,213	599,495	-1.0%
Rocky Mountain	5,895	5,087	15.9%	197,432	186,213	6.0%	271,841	258,811	5.0%
Pacific Northwest	2,707	2,622	3.2%	110,507	104,862	5.4%	157,019	151,197	3.9%
Pacific Southwest	<u>6,472</u>	<u>6,355</u>	1.8%	<u>212,946</u>	<u>210,733</u>	1.1%	<u>294,016</u>	<u>291,873</u>	0.7%
Total United States *	81,556	77,357	5.4%	2,956,875	2,885,601	2.5%	4,060,145	4,005,604	1.4%

Notes: EEI output data are an estimate of electricity load made available for distribution derived as weekly net generation + purchases from non-utilities + net imports - exports - sales for resale. It is not meant to be a measure of electricity generation for the U.S. EEI survey data represent the majority of national distribution (large utilities, large government power projects, some independent and large municipal power projects). The remaining segment of the industry (smaller producers) is estimated. Non-utility generation is captured via direct sales to utilities.

* Excludes Alaska and Hawaii

** Less than one-tenth of one percent

SOURCE: Edison Electric Institute (EEI), *Weekly Electric Output Report*.

AMERICAN IRON AND STEEL INSTITUTE
 1140 Connecticut Avenue, Suite 705
 Washington, D.C. 20036

September 17, 2007

ESTIMATED WEEKLY RAW STEEL* PRODUCTION

<u>Period</u>	<u>Thousand Net Tons</u>	Percent		<u>Production by District</u>		
		<u>Change from Previous Period</u>	<u>Percent Capability Utilization**</u>	<u>Week Ending</u>		
				<u>Sep 15</u>	<u>Sep 8</u>	
<u>Week Ending</u>				North East Coast	148	149
Sept 15, 2007	2,088	-0.1	88.2	Pgh/Youngstown	203	202
Sept 15, 2006	2,147	-2.7	91.2	Lake Erie	120	111
Sept 8, 2007	2,092	1.4	88.4	Detroit	125	124
				Indiana/Chicago	571	546
				Midwest	249	252
<u>Year-to-Date+</u>				Southern	583	617
Sept 15, 2007	75,168	-5.0	85.4	Western	89	91
Sept 15, 2006	79,191	-	90.1	Total	2088	2092

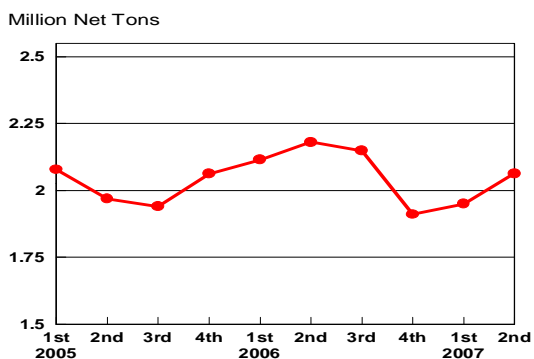
*Raw steel production tonnage included in this report is estimated based on a sampling of steel producers. Therefore, this report should be used primarily to assess production trends. The AISI production report "AIS 7," produced monthly and available by subscription, provides a more accurate summary of steel production based on data supplied by companies representing approximately 75% of U.S. production capacity.

+Includes revisions for previous months

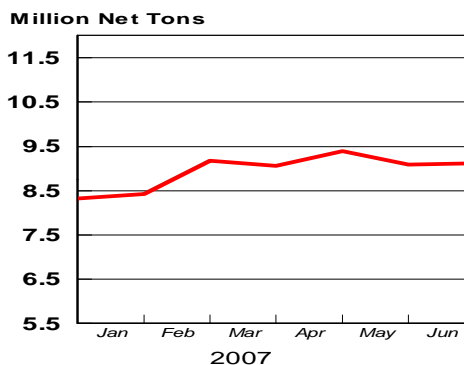
NOTE: Capability for the First Quarter 2007 is approximately 31.2 million net tons vs 30.5 million net tons for the same period last year, and 30.7 million tons for the fourth quarter of 2006.

Capability -	2003 approx.	2.3 million tons/week
	2004	2.2
	2005	2.3
	2006	2.4
	2007	2.4

Average Weekly Raw Steel Production

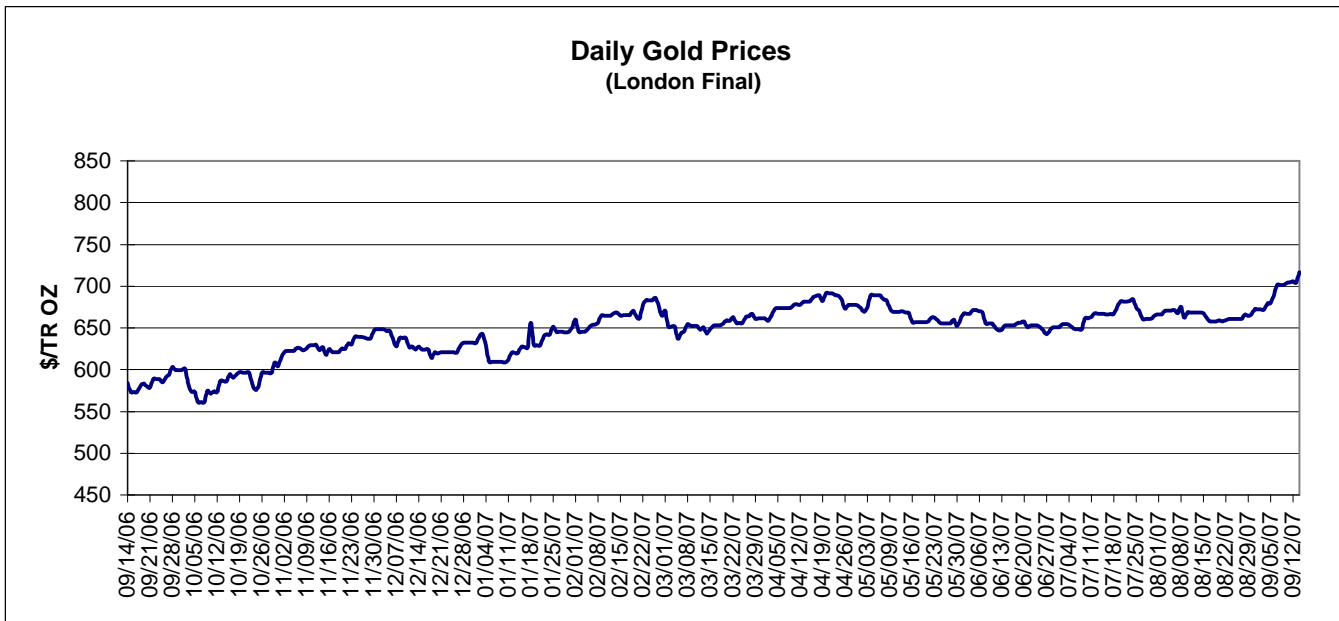
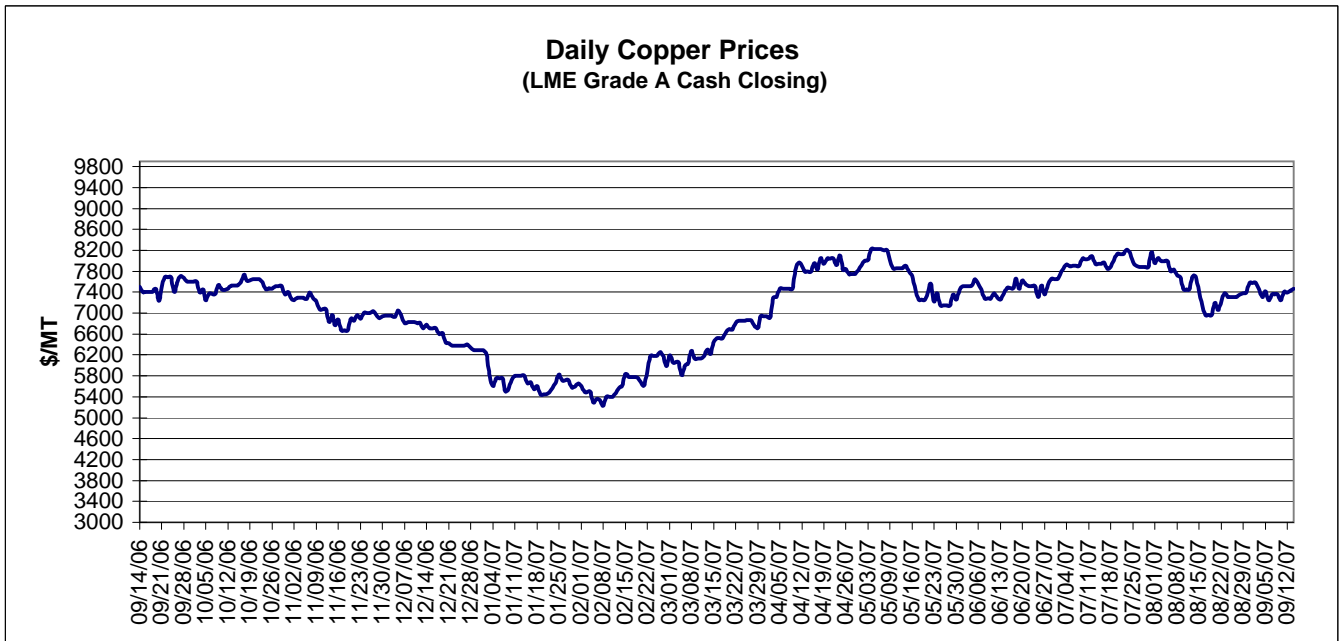


MONTHLY RAW STEEL PRODUCTION



*Steel in the first solid state after melting suitable for further processing or sale, including ingots, steel for castings and strand or pressure cast blooms, slabs, or other product forms.

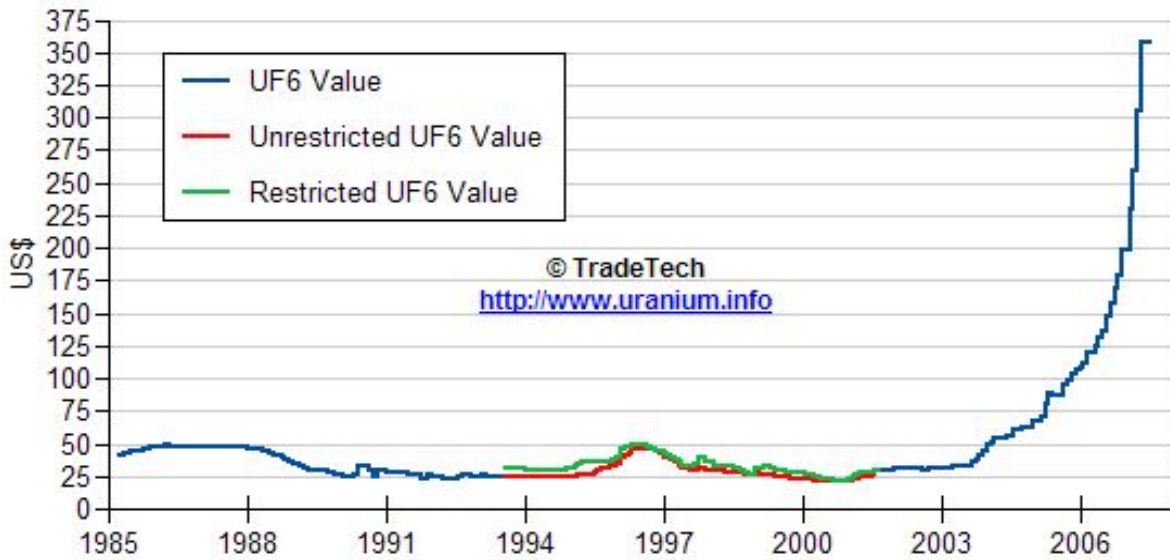
** Based on tonnage capability to produce raw steel for a sustained full order book.



Data reflect closings on weekends and holidays.

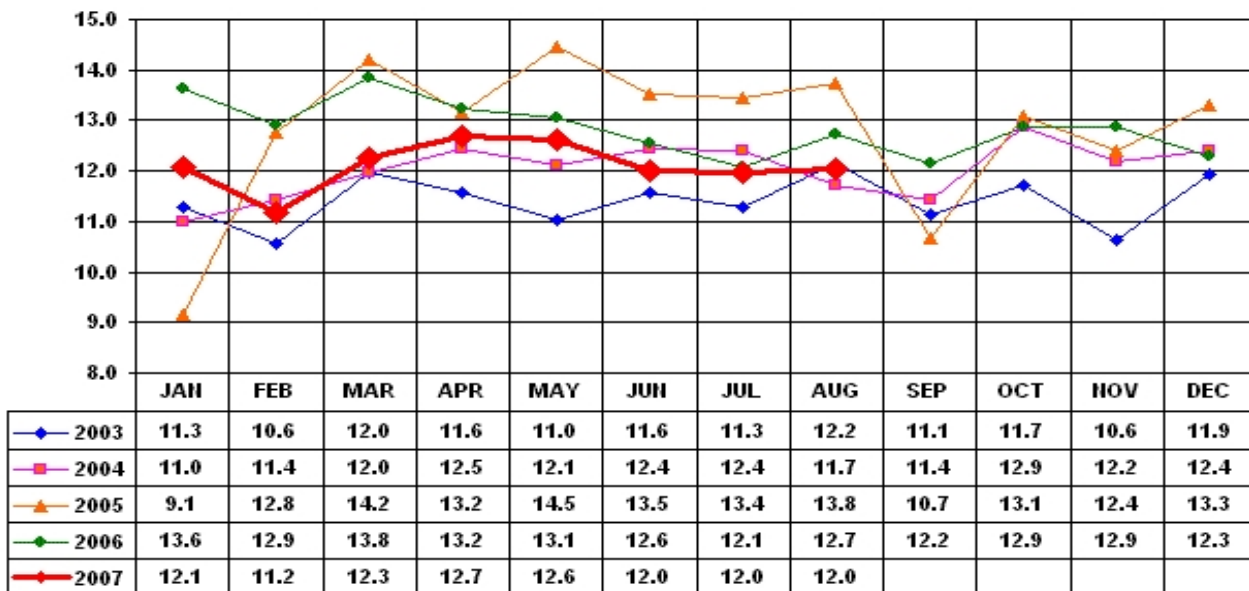
Source: Platts Metals Week

Trade Tech's Uranium (UF6) Monthly Spot Prices (US\$/kg as UF6)



Source: Trade Tech, Uranium Info Website – <http://www.uranium.info>

Coal and Coke Monthly Tonnage Indicator for Internal U.S. Waterways



Source: U.S. Army Corps of engineers, Waterborne Commerce Statistics Center