

---

National Mining Association

# Weekly Statistical Summary

September 26, 2008 Edition  
(Data for Week Ending September 20, 2008)

Prepared by  
National Mining Association



Suite 500 East, 101 Constitution Avenue, NW  
Washington, DC, 20001  
Phone (202) 463-2600  
Visit us at <http://www.nma.org>

# NMA Weekly Statistical Summary

Vol. 46, No. 38  
Dated 09/26/08

PRODUCTION, CONSUMPTION & TRADE						
	Week Ended			* Cumulative Jan 1 to		
	09/20/08	09/22/07	% Chng	09/20/08	09/20/07	% Chng
<b>EIA Coal Production (000 Tons):</b>						
Week Ended/Year to Date	22,559	22,198	1.6%	837,876	827,908	1.2%
52 Weeks Ended	1,151,132	1,147,065	0.4%			
* Due to leap year, 2008 cumulative reflects one extra day of tonnage.						
	August 08/07		% Chng	Jan - Aug 08/07		% Chng
<b>Month Ended -- August</b>	99,865	100,627	-0.8%	774,024	765,359	1.1%
MONTH ENDED AND CUMULATIVE NUMBERS ARE PRELIMINARY AND SUBJECT TO CHANGE						
DOC Bituminous Coal Trade (000 Tons)						
	July 08/07		% Chng	Jan - July 08/07		% Chng
<b>Exports:</b>						
Metallurgical	2,948	3,247	-9.2%	24,608	17,889	37.6%
Steam	3,437	2,532	35.7%	20,339	13,525	50.4%
<b>Imports:</b>	2,569	3,373	-23.8%	19,191	20,564	-6.7%
	Week Ended			* Cumulative Jan 1 to		
	09/20/08	09/22/07	% Chng	09/20/08	09/22/07	% Chng
<b>EEl Electric Output (Mil. Kwh)</b>	76,962	79,130	-2.7%	3,018,264	3,036,007	-0.6%
<b>AISI Raw Steel Output (000 Tons)</b>	2,027	2,047	-1.0%	79,620	77,853	2.3%
EIA U.S. PETROLEUM DATA						
4-Week Averages 000 Barrels per Day						
	Week Ending			Cumulative Daily Averages		
	09/19/08	09/19/07	% Chng	2008	2007	% Chng
<b>PETROLEUM SUPPLY:</b>						
Domestic Crude	4,275	4,895	-12.7	5,033	5,081	-0.9
Net Imports (Incl. SPR)	8,490	10,273	-17.4	9,703	10,042	-3.4
SPR Stocks W/D or Added	51	-53	--	-34	-12	--
Other Stocks W/D or added	556	388	--	-9	-10	--
Natural Gas Liquids Prod.	2,186	2,407	-9.2	2,254	2,373	-5.0



**NMA**

THE AMERICAN RESOURCE National Mining Association Web Site: [http:// www.nma.org](http://www.nma.org)

## EIA Estimated Weekly U.S. Coal Production Overview (Thousand Short Tons)

Coal-Producing Region and State	Week Ended			Year to Date			52 Weeks Ended		
	9/20/2008	9/13/2008	9/22/2007	9/20/2008	9/20/2007	Percent Change	9/20/2008	9/22/2007	Percent Change
Alabama	373	385	372	14,950	14,083	6.2	20,314	19,004	6.9
Alaska	27	28	13	1,016	950	6.9	1,387	1,367	1.4
Arizona	152	157	162	5,453	5,921	-7.9	7,482	8,182	-8.6
Arkansas	1	1	2	43	60	-28.7	65	70	-6.3
Colorado	782	809	727	25,855	26,399	-2.1	35,649	36,950	-3.5
Illinois	577	596	594	22,196	25,456	-12.8	29,463	34,623	-14.9
Indiana	677	700	710	25,503	25,574	-0.3	34,776	35,399	-1.8
Kansas	6	6	8	218	310	-29.7	327	467	-30.0
<b>Kentucky Total</b>	<b>2,296</b>	<b>2,375</b>	<b>2,213</b>	<b>86,916</b>	<b>84,440</b>	<b>2.9</b>	<b>117,533</b>	<b>115,972</b>	<b>1.3</b>
Eastern	1,733	1,793	1,662	65,565	63,885	2.6	88,595	87,894	0.8
Western	563	582	550	21,351	20,556	3.9	28,938	28,078	3.1
Louisiana	75	75	44	2,784	2,020	37.8	3,878	3,228	20.1
Maryland	40	41	41	1,677	1,614	3.9	2,355	2,420	-2.7
Mississippi	70	70	86	2,359	2,643	-10.7	3,239	3,635	-10.9
Missouri	4	4	4	159	167	-4.8	227	249	-8.8
Montana	811	838	895	30,663	30,233	1.4	43,576	42,227	3.2
New Mexico	479	496	411	17,786	17,677	0.6	24,473	25,178	-2.8
North Dakota	545	564	605	20,753	21,500	-3.5	28,739	30,228	-4.9
Ohio	451	467	459	18,032	16,020	12.6	24,486	22,171	10.4
Oklahoma	35	36	32	1,072	1,210	-11.4	1,503	1,707	-11.9
<b>Pennsylvania Total</b>	<b>1,231</b>	<b>1,274</b>	<b>1,201</b>	<b>47,871</b>	<b>47,996</b>	<b>-0.3</b>	<b>64,813</b>	<b>65,671</b>	<b>-1.3</b>
Anthracite	23	24	29	1,079	1,131	-4.6	1,511	1,538	-1.8
Bituminous	1,208	1,250	1,172	46,792	46,865	-0.2	63,302	64,133	-1.3
Tennessee	51	52	48	1,809	1,898	-4.7	2,556	2,623	-2.6
Texas	753	779	850	27,413	29,810	-8.0	39,315	42,203	-6.8
Utah	458	473	412	17,339	17,192	0.9	24,365	24,545	-0.7
Virginia	463	479	449	17,442	19,535	-10.7	23,269	27,409	-15.1
Washington	--	--	--	--	--	--	0	473	-100.0
<b>West Virginia Total</b>	<b>3,033</b>	<b>3,137</b>	<b>2,958</b>	<b>116,302</b>	<b>112,663</b>	<b>3.2</b>	<b>156,512</b>	<b>152,959</b>	<b>2.3</b>
Northern	787	814	792	30,177	31,429	-4.0	40,796	42,187	-3.3
Southern	2,246	2,323	2,165	86,125	81,234	6.0	115,716	110,772	4.5
Wyoming	9,172	9,416	8,902	332,265	322,538	3.0	460,829	448,105	2.8
<b>Appalachian Total</b>	<b>7,374</b>	<b>7,628</b>	<b>7,191</b>	<b>283,649</b>	<b>277,693</b>	<b>2.1</b>	<b>382,900</b>	<b>380,151</b>	<b>0.7</b>
<b>Interior Total</b>	<b>2,760</b>	<b>2,850</b>	<b>2,881</b>	<b>103,097</b>	<b>107,805</b>	<b>-4.4</b>	<b>141,732</b>	<b>149,659</b>	<b>-5.3</b>
<b>Western Total</b>	<b>12,425</b>	<b>12,781</b>	<b>12,127</b>	<b>451,130</b>	<b>442,410</b>	<b>2.0</b>	<b>626,500</b>	<b>617,255</b>	<b>1.5</b>
<b>East of Miss. River</b>	<b>9,260</b>	<b>9,576</b>	<b>9,132</b>	<b>355,058</b>	<b>351,921</b>	<b>0.9</b>	<b>479,316</b>	<b>481,886</b>	<b>-0.5</b>
<b>West of Miss. River</b>	<b>13,299</b>	<b>13,682</b>	<b>13,066</b>	<b>482,818</b>	<b>475,987</b>	<b>1.4</b>	<b>671,816</b>	<b>665,179</b>	<b>1.0</b>
Bituminous and Lignite	22,536	23,235	22,169	836,796	826,777	1.2	1,149,621	1,145,527	0.4
Anthracite	23	24	29	1,079	1,131	-4.6	1,511	1,538	-1.8
<b>U.S. Total</b>	<b>22,559</b>	<b>23,259</b>	<b>22,198</b>	<b>837,876</b>	<b>827,908</b>	<b>1.2</b>	<b>1,151,132</b>	<b>1,147,065</b>	<b>0.4</b>
<b>Railroad Cars Loaded</b>	<b>150,693</b>	<b>156,846</b>	<b>147,434</b>	<b>5,561,774</b>	<b>5,380,725</b>	<b>3.4</b>	<b>7,585,081</b>	<b>7,391,192</b>	<b>2.6</b>

Source: Energy Information Administration



Volume 76 No. 38

**OUTPUT FOR WEEK ENDED - Sep 20, 2008**

Sep 24, 2008

The net available amount of electric energy distributed by the Total Electric Utility Industry+ for the week ended Saturday, **Sep 20, 2008** was **76,962** gigawatthours (GWh), according to the Edison Electric Institute. This is equivalent to **175** on the weekly electric output index.

**WEEKLY ELECTRIC OUTPUT BY GEOGRAPHIC DIVISION**  
(48 CONTIGUOUS STATES)

	Week Ended September 20		52 Weeks Ended September 20	
	GWh Output	% Increase Over Corresponding Week of 2007	GWh Output	% Increase Over Corresponding Period of 2007
New England	2,410	0.3	132,420	-0.5
Mid-Atlantic	8,669	5.3	454,661	0.5
Central Industrial	12,806	-5.8	712,271	-0.4
West Central	6,476	-3.6	346,392	-0.9
Southeast	21,882	2.6	1,098,960	0.3
South Central	9,889	-21.8	606,789	2.2
Rocky Mountain	5,698	2.0	275,817	1.2
Pacific Northwest	2,798	3.7	167,589	6.7
Pacific Southwest	6,334	6.8	287,971	-2.0
Total United States	76,962	-2.7	4,082,870	0.5

**WEEKLY ELECTRIC OUTPUT IN PREVIOUS WEEKS--GWh**

Week Ended	2008	Week Ended	2007	% Inc. (08/07)	52 Weeks Ended	2008	% Inc. (08/07)
Aug 30	85,889	Sep 01	90,365	-5.0	Aug 30	4,090,140	1.1
Sep 06	84,412	Sep 08	88,495	-4.6	Sep 06	4,086,057	0.7
Sep 13	80,537	Sep 15	81,556	-1.2	Sep 13	4,085,038	0.6
Sep 20	76,962	Sep 22	79,130	-2.7	Sep 20	4,082,870	0.5
Sep 20	3,018,264	Sep 22	3,036,007	-0.6	YEAR TO DATE, FIRST 38 WEEKS		

**WEEKLY ELECTRIC OUTPUT INDEX--TOTAL U.S.\***  
SEASONALLY ADJUSTED 1982 = 100

Week Ended	2008	Week Ended	2007	Week Ended	2006
Aug 30	178	Sep 01	183	Sep 02	171
Sep 06	185	Sep 08	188	Sep 09	167
Sep 13	179	Sep 15	175	Sep 16	168
Sep 20	175	Sep 22	175	Sep 23	172

\* Excludes Alaska and Hawaii.

+ Includes investor-owned companies, cooperatives and government-owned utilities.

Copyright © 2008 Edison Electric Institute. All rights reserved.

### WEEKLY ELECTRIC OUTPUT BY GEOGRAPHIC DIVISION (48 CONTIGUOUS STATES)

	Week Ended			NMA CUMULATIVE JANUARY WEEK ONE TO			52 Weeks Ended		
	20-Sep 2008 GWh Output	22-Sep 2007 GWh Output	% Increase Over Corresponding Week of 2007	20-Sep 2008 GWh Output	22-Sep 2007 GWh Output	% Increase Over Corresponding Week of 2007	20-Sep 2008 GWh Output	22-Sep 2007 GWh Output	% Increase Over Corresponding Week of 2007
<b>New England</b>	2,410	2,402	0.3%	<b>97,123</b>	<b>99,149</b>	<b>-2.0%</b>	132,420	133,034	-0.5%
<b>Mid-Atlantic</b>	8,669	8,235	5.3%	<b>335,604</b>	<b>339,610</b>	<b>-1.2%</b>	454,661	452,399	0.5%
<b>Central Industrial</b>	12,806	13,595	-5.8%	<b>523,718</b>	<b>533,584</b>	<b>-1.8%</b>	712,271	715,406	-0.4%
<b>West Central</b>	6,476	6,720	-3.6%	<b>255,743</b>	<b>261,565</b>	<b>-2.2%</b>	346,392	349,491	-0.9%
<b>Southeast</b>	21,882	21,318	2.6%	<b>810,779</b>	<b>818,479</b>	<b>-0.9%</b>	1,098,960	1,095,485	0.3%
<b>South Central</b>	9,889	12,645	-21.8%	<b>457,171</b>	<b>448,518</b>	<b>1.9%</b>	606,789	593,492	2.2%
<b>Rocky Mountain</b>	5,698	5,585	2.0%	<b>201,405</b>	<b>203,017</b>	<b>-0.8%</b>	275,817	272,488	1.2%
<b>Pacific Northwest</b>	2,798	2,698	3.7%	<b>121,715</b>	<b>113,205</b>	<b>7.5%</b>	167,589	157,131	6.7%
<b>Pacific Southwest</b>	6,334	5,932	6.8%	<b>215,008</b>	<b>218,878</b>	<b>-1.8%</b>	287,971	293,826	-2.0%
<b>Total United States *</b>	76,962	79,130	-2.7%	<b>3,018,266</b>	<b>3,036,005</b>	<b>-0.6%</b>	4,082,870	4,062,752	0.5%

**Notes:** EEI output data are an estimate of electricity load made available for distribution derived as weekly net generation + purchases from non-utilities + net imports - exports - sales for resale. It is not meant to be a measure of electricity generation for the U.S. EEI survey data represent the majority of national distribution (large utilities, large government power projects, some independent and large municipal power projects). The remaining segment of the industry (smaller producers) is estimated. Non-utility generation is captured via direct sales to utilities.

\* Excludes Alaska and Hawaii

\*\* Less than one-tenth of one percent

SOURCE: Edison Electric Institute (EEI), *Weekly Electric Output Report*.

AMERICAN IRON AND STEEL INSTITUTE  
 1140 Connecticut Avenue, Suite 705  
 Washington, D.C. 20036

September 22, 2008

**ESTIMATED WEEKLY RAW STEEL \* PRODUCTION**

Period	Thousand Net Tons	Percent Change from Previous Period	Percent Capability Utilization**	Production by District		
				Week Ending Sep. 20	Week Ending Sep. 13	
<b>Week Ending</b>				North East Coast	183	188
September 20, 2008	2,027	-1.4	85.0	Pgh/Youngstown	174	166
September 20, 2007	2,047	-1.0	86.5	Lake Erie	93	94
September 13, 2008	2,055	-0.4	86.0	Detroit	79	85
				Indiana/Chicago	507	519
				Midwest	258	266
				Southern	647	644
				Western	84	93
				<b>Total</b>	<b>2,025</b>	<b>2,055</b>
<b>Year-to-Date+</b>						
September 20, 2008	79,620	2.3	88.5			
September 20, 2007	77,853	-	86.1			

\*Raw steel production tonnage included in this report is estimated based on a sampling of steel producers. Therefore, this report should be used primarily to assess production trends. The AISI production report "AISI 7," produced monthly and available by subscription, provides a more accurate summary of steel production based on data supplied by companies representing approximately 75% of U.S. production capacity.  
 + Includes revisions for previous months

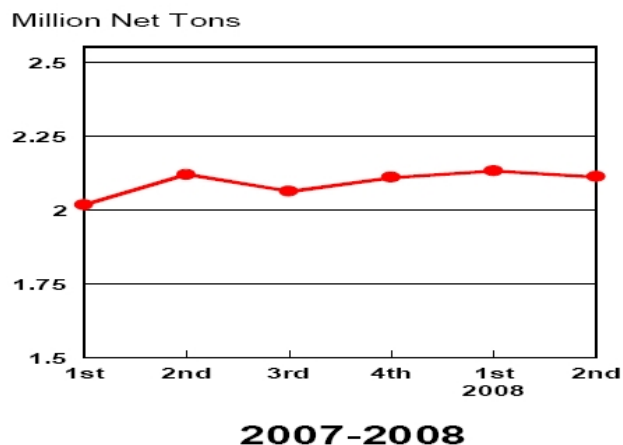
NOTE: Capability for the Third Quarter 2008 is approximately 31.4 million net tons vs 30.1 million net tons for the same period last year, and 31.0 million tons for the second quarter of 2008.

Capability -	2004 approx.	2.2 million tons/week
	2005	2.3
	2006	2.4
	2007	2.4
	2008	2.4

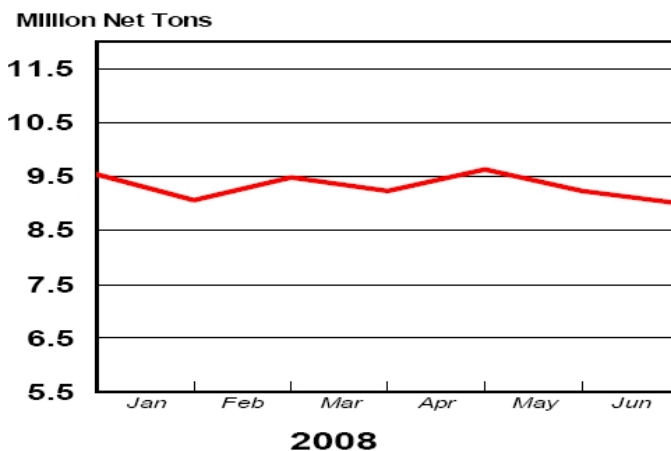
\*Steel in the first solid state after melting suitable for further processing or sale, including ingots, steel for castings and strand or pressure cast blooms, slabs, or other product forms.

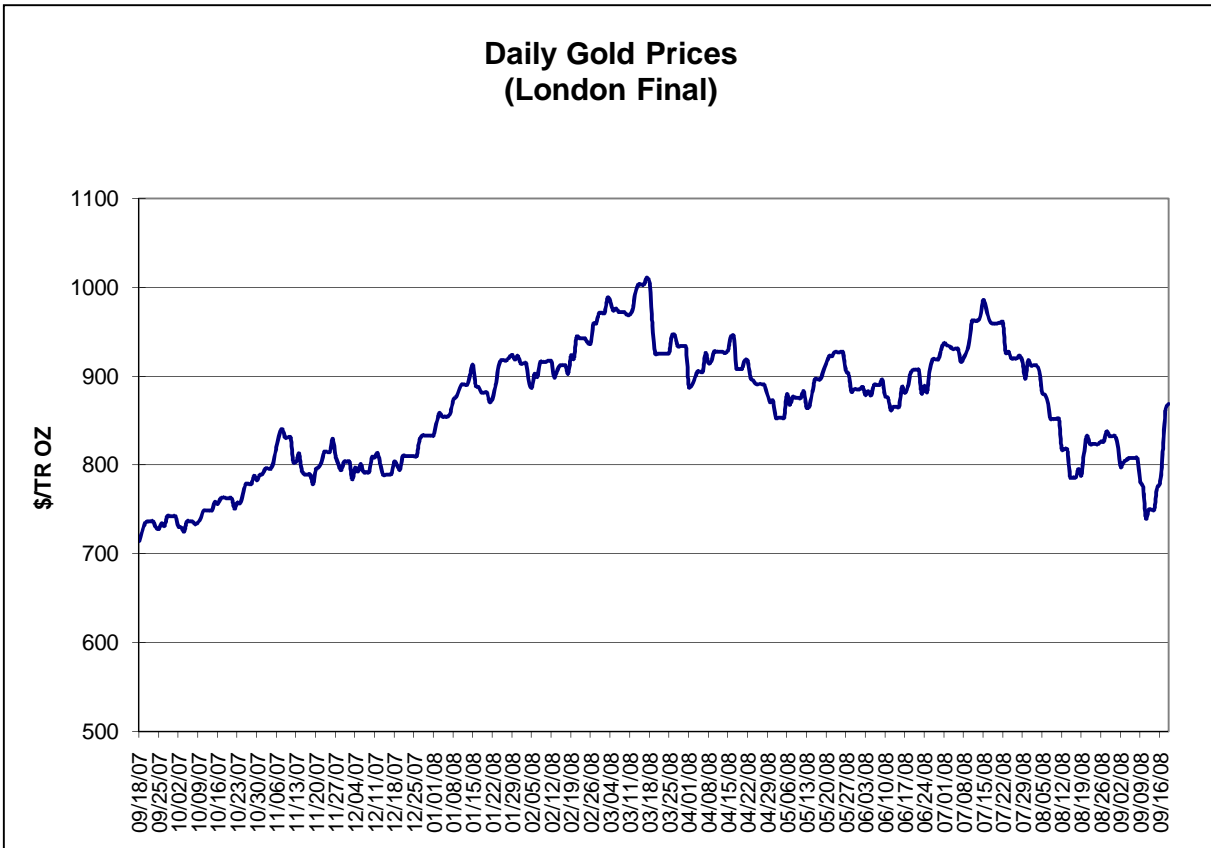
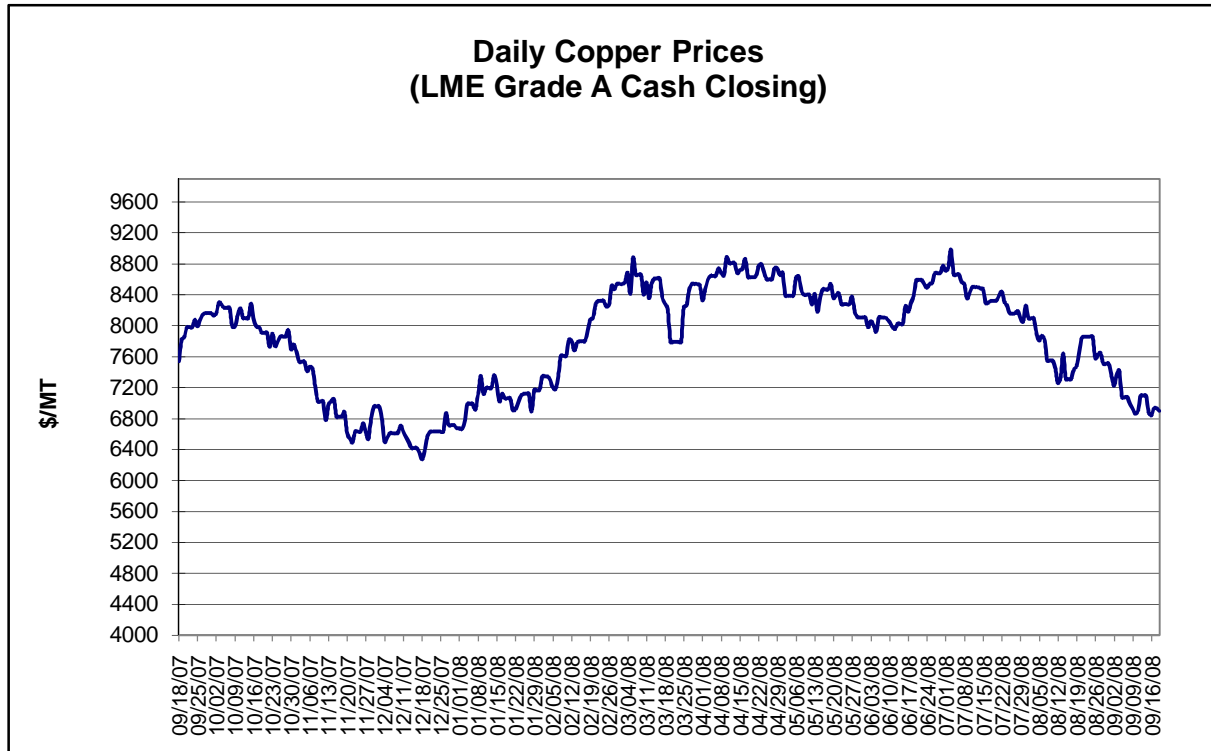
\*\* Based on tonnage capability to produce raw steel for a sustained full order book.

**Average Weekly Raw Steel Production**



**Monthly Raw Steel Production**

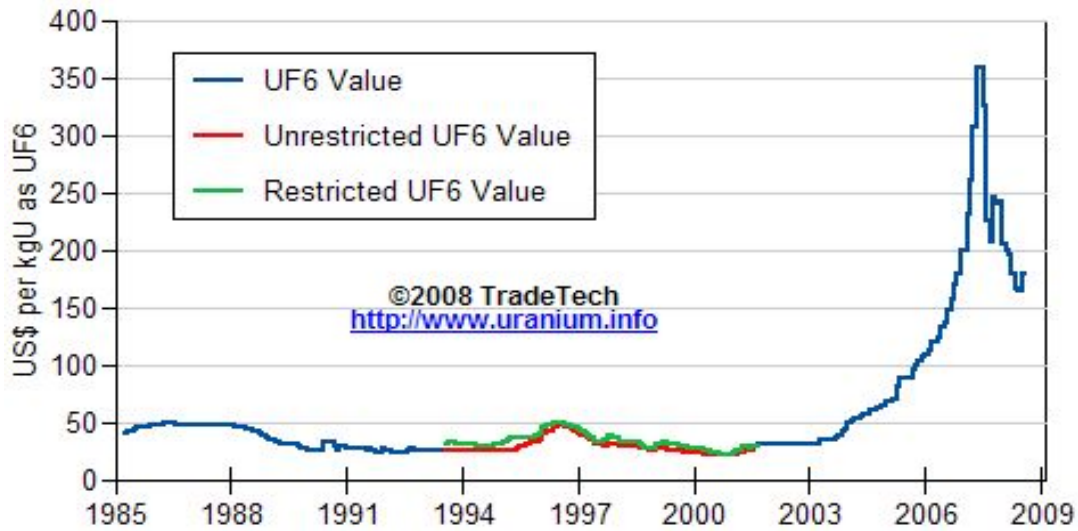




Data reflect closings on weekends and holidays.

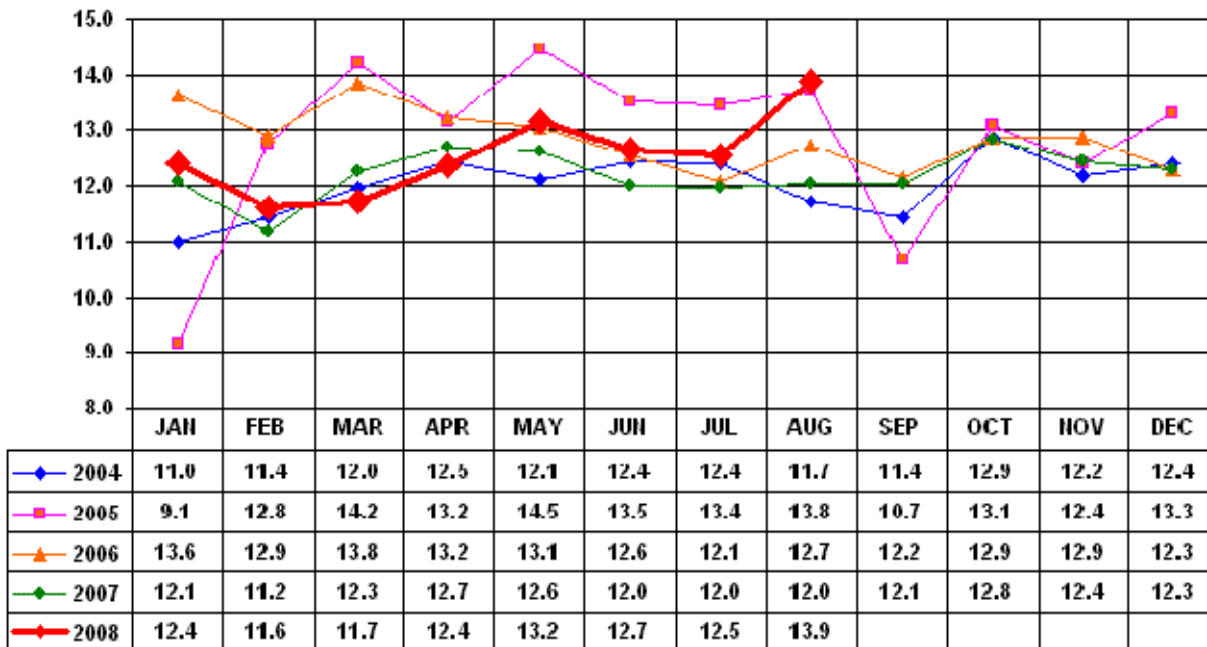
Source: Platts Metals Week

### Trade Tech's Uranium (UF6) Monthly Spot Prices (US\$/kg as UF6)



Source: Trade Tech, Uranium Info Website – <http://www.uranium.info>

### Coal and Coke Monthly Tonnage Indicator for Internal U.S. Waterways

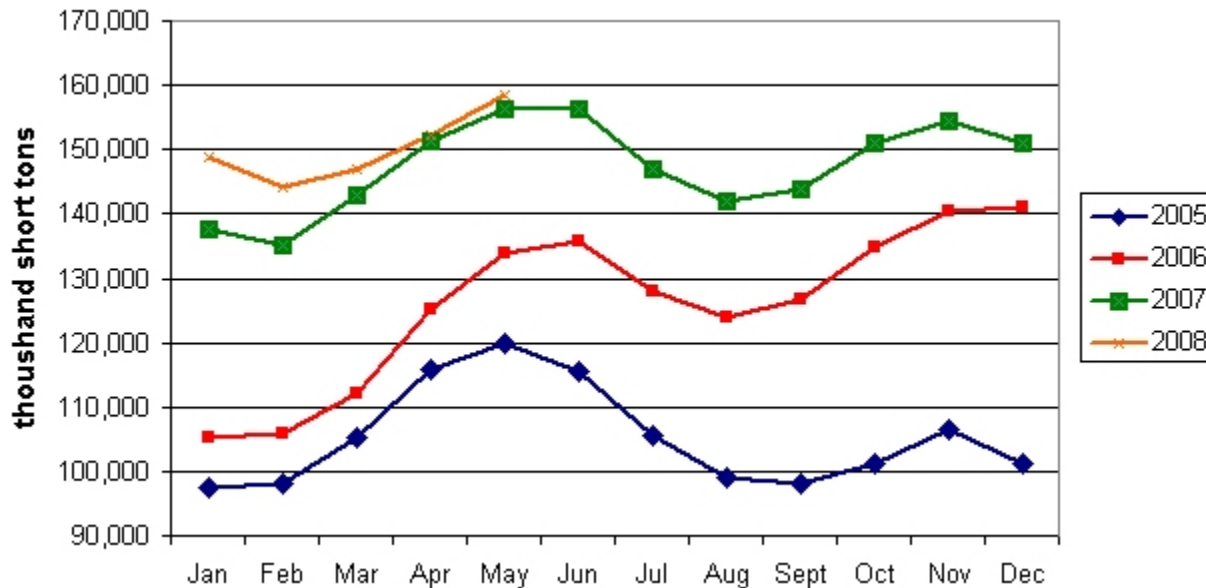


Source: U.S. Army Corps of Engineers, Waterborne Commerce Statistics Center

Average Weekly Coal Commodity Spot Prices (Dollars per Short Ton)					
Week Ended	Central Appalachia 12,500 Btu, 1.2 SO2	Northern Appalachia 13,000 Btu, <3.0 SO2	Illinois Basin 11,800 Btu, 5.0 SO2	Powder River Basin 8,800 Btu, 0.8 SO2	Uinta Basin 11,700 Btu, 0.8 SO2
15-Aug-08	\$140.00	\$145.00	\$93.00	\$12.50	\$62.00
22-Aug-08	\$140.00	\$144.00	\$93.00	\$11.00	\$62.00
29-Aug-08	\$140.00	\$144.00	\$83.00	\$11.00	\$62.00
05-Sep-08	\$140.00	\$140.00	\$83.00	\$11.00	\$61.00
12-Sep-08	\$140.00	\$140.00	\$83.00	\$11.00	\$61.00
19-Sep-08	\$140.00	\$150.00	\$84.00	\$11.25	\$61.00

Source: Energy Information Administration (from Platts *Coal Outlook*, "Weekly Price Survey")

### EIA Electric Power Sector Coal Stocks



Source: Energy Information Administration

<b>USGS Production of Selected Mineral Commodities</b>	<b>2008 Year to Date - 2nd Quarter</b>	<b>2007 Year to Date - 2nd Quarter</b>	<b>Percent Change</b>
Aluminum, secondary (000 Mt.)	445.0	477.0	-7%
Cement (Mil. Mt.)	41.1	43.7	-6%
Gypsum (Mil. Mt.)	9.4	10.9	-14%
Iron Ore (Mil. Mt.)	26.8	25.1	7%
Phosphate rock (Mil. Mt.)	15.3	14.7	4%
Sand & gravel, construction (Mil. Mt.)	477.0	533.0	-11%
Soda ash (Mil. Mt.)	5.6	5.5	2%
Stone, crushed (Mil. Mt.)	664.0	730.0	-9%
Zinc (000 Mt.)	420.0	365.0	15%

Source: U.S. Geological Survey, Mineral Industry Surveys, *U.S. Production of Selected Mineral Commodities in the Second Quarter 2008*, August 2008