

---

National Mining Association

# Weekly Statistical Summary

September 05, 2008 Edition  
(Data for Week Ending August 30, 2008)

Prepared by  
National Mining Association



Suite 500 East, 101 Constitution Avenue, NW  
Washington, DC, 20001  
Phone (202) 463-2600  
Visit us at <http://www.nma.org>

# NMA Weekly Statistical Summary

Vol. 46, No. 35  
Dated 09/05/08

PRODUCTION, CONSUMPTION & TRADE						
	Week Ended			* Cumulative Jan 1 to		
	08/30/08	09/01/07	% Chng	08/30/08	08/30/07	% Chng
<b>EIA Coal Production (000 Tons):</b>						
Week Ended/Year to Date	23,271	22,346	4.1%	772,215	761,584	1.4%
52 Weeks Ended	1,151,755	1,147,121	0.4%			
* Due to leap year, 2008 cumulative reflects one extra day of tonnage.						
	July 08/07		% Chng	Jan - July 08/07		% Chng
<b>Month Ended -- July</b>	98,578	93,003	6.0%	674,159	664,731	1.4%
MONTH ENDED AND CUMULATIVE NUMBERS ARE PRELIMINARY AND SUBJECT TO CHANGE						
<b>DOC Bituminous Coal Trade (000 Tons)</b>						
	June 08/07		% Chng	Jan - June 08/07		% Chng
<b>Exports:</b>						
Metallurgical	3,417	2,893	18.1%	21,660	14,642	47.9%
Steam	3,188	2,195	45.2%	16,902	10,993	53.8%
<b>Imports:</b>	3,295	3,027	8.9%	16,622	17,191	-3.3%
	Week Ended			* Cumulative Jan 1 to		
	08/30/08	09/01/07	% Chng	08/30/08	09/01/07	% Chng
<b>EEl Electric Output (Mil. Kwh)</b>	85,889	90,365	-5.0%	2,776,353	2,786,825	-0.4%
<b>AISI Raw Steel Output (000 Tons)</b>	2,087	2,075	0.6%	73,476	71,712	2.5%
<b>EIA U.S. PETROLEUM DATA</b>						
4-Week Averages 000 Barrels per Day						
	Week Ending			Cumulative Daily Averages		
	08/29/08	08/29/07	% Chng	2008	2007	% Chng
<b>PETROLEUM SUPPLY:</b>						
Domestic Crude	5,055	4,914	2.9	5,123	5,098	0.5
Net Imports (Incl. SPR)	10,087	10,274	-1.8	9,847	10,021	1.7
SPR Stocks W/D or Added	-14	-5	--	-43	-8	--
Other Stocks W/D or added	-250	522	--	-67	-41	--
Natural Gas Liquids Prod.	2,408	2,390	0.8	2,263	2,369	-4.5



**NMA**

THE AMERICAN RESOURCE National Mining Association Web Site: [http:// www.nma.org](http://www.nma.org)

## EIA Estimated Weekly U.S. Coal Production Overview (Thousand Short Tons)

Coal-Producing Region and State	Week Ended			Year to Date			52 Weeks Ended		
	8/30/2008	8/23/2008	9/1/2007	8/30/2008	8/30/2007	Percent Change	8/30/2008	9/1/2007	Percent Change
Alabama	383	388	373	13,931	12,977	7.3	20,400	18,935	7.7
Alaska	27	28	13	970	910	6.6	1,381	1,400	-1.4
Arizona	156	158	162	4,863	5,441	-10.6	7,372	8,193	-10.0
Arkansas	1	1	2	44	54	-17.9	73	65	12.3
Colorado	804	814	728	24,779	24,241	2.2	36,729	36,953	-0.6
Illinois	592	600	595	21,145	23,692	-10.7	30,177	34,795	-13.3
Indiana	695	704	712	23,772	23,464	1.3	35,154	35,292	-0.4
Kansas	6	6	8	254	287	-11.5	386	472	-18.3
<b>Kentucky Total</b>	<b>2,359</b>	<b>2,389</b>	<b>2,216</b>	<b>80,721</b>	<b>77,872</b>	<b>3.7</b>	<b>117,905</b>	<b>116,206</b>	<b>1.5</b>
Eastern	1,781	1,803	1,665	60,294	58,950	2.3	88,258	88,240	*
Western	578	586	551	20,427	18,922	8.0	29,647	27,966	6.0
Louisiana	84	92	66	2,696	1,806	49.3	4,000	3,224	24.1
Maryland	41	41	41	1,501	1,492	0.6	2,301	2,653	-13.3
Mississippi	51	33	64	2,369	2,441	-2.9	3,457	3,616	-4.4
Missouri	4	4	4	151	154	-1.9	232	247	-5.8
Montana	833	843	896	29,756	27,577	7.9	45,325	42,035	7.8
New Mexico	492	498	411	15,087	16,458	-8.3	22,993	25,404	-9.5
North Dakota	560	567	606	18,971	19,703	-3.7	28,752	30,258	-5.0
Ohio	464	469	459	16,246	14,659	10.8	24,061	22,098	8.9
Oklahoma	36	36	32	1,179	1,114	5.7	1,706	1,720	-0.8
<b>Pennsylvania Total</b>	<b>1,265</b>	<b>1,281</b>	<b>1,203</b>	<b>44,879</b>	<b>44,429</b>	<b>1.0</b>	<b>65,387</b>	<b>65,645</b>	<b>-0.4</b>
Anthracite	24	24	29	1,058	1,045	1.3	1,576	1,542	2.2
Bituminous	1,241	1,257	1,174	43,821	43,385	1.0	63,811	64,103	-0.5
Tennessee	52	53	49	1,749	1,754	-0.3	2,640	2,641	-0.1
Texas	774	784	851	26,753	27,287	-2.0	41,178	42,523	-3.2
Utah	470	476	412	16,818	15,969	5.3	25,066	24,661	1.6
Virginia	476	482	450	15,858	18,203	-12.9	23,018	27,770	-17.1
Washington	--	--	--	--	--	--	0	630	-100.0
<b>West Virginia Total</b>	<b>3,116</b>	<b>3,155</b>	<b>2,962</b>	<b>106,503</b>	<b>103,882</b>	<b>2.5</b>	<b>155,492</b>	<b>152,634</b>	<b>1.9</b>
Northern	808	818	794	29,002	29,076	-0.3	41,972	42,055	-0.2
Southern	2,307	2,336	2,169	77,502	74,806	3.6	113,520	110,578	2.7
Wyoming	9,531	9,249	9,030	301,220	295,715	1.9	456,572	447,052	2.1
<b>Appalachian Total</b>	<b>7,576</b>	<b>7,671</b>	<b>7,202</b>	<b>260,961</b>	<b>256,346</b>	<b>1.8</b>	<b>381,557</b>	<b>380,616</b>	<b>0.2</b>
<b>Interior Total</b>	<b>2,822</b>	<b>2,845</b>	<b>2,885</b>	<b>98,791</b>	<b>99,222</b>	<b>-0.4</b>	<b>146,008</b>	<b>149,920</b>	<b>-2.6</b>
<b>Western Total</b>	<b>12,873</b>	<b>12,633</b>	<b>12,259</b>	<b>412,462</b>	<b>406,016</b>	<b>1.6</b>	<b>624,190</b>	<b>616,585</b>	<b>1.2</b>
<b>East of Miss. River</b>	<b>9,493</b>	<b>9,594</b>	<b>9,124</b>	<b>328,675</b>	<b>324,865</b>	<b>1.2</b>	<b>479,991</b>	<b>482,285</b>	<b>-0.5</b>
<b>West of Miss. River</b>	<b>13,779</b>	<b>13,556</b>	<b>13,222</b>	<b>443,540</b>	<b>436,719</b>	<b>1.6</b>	<b>671,764</b>	<b>664,837</b>	<b>1.0</b>
Bituminous and Lignite	23,247	23,125	22,317	771,157	760,539	1.4	1,150,179	1,145,579	0.4
Anthracite	24	24	29	1,058	1,045	1.3	1,576	1,542	2.2
<b>U.S. Total</b>	<b>23,271</b>	<b>23,150</b>	<b>22,346</b>	<b>772,215</b>	<b>761,584</b>	<b>1.4</b>	<b>1,151,755</b>	<b>1,147,121</b>	<b>0.4</b>
Railroad Cars Loaded	156,633	155,501	147,552	5,106,028	4,942,444	3.3	7,567,616	7,391,204	2.4

Source: Energy Information Administration



Volume 76 No. 35

**OUTPUT FOR WEEK ENDED - Aug 30, 2008**

Sep 04, 2008

The net available amount of electric energy distributed by the Total Electric Utility Industry+ for the week ended Saturday, **Aug 30, 2008** was **85,889** gigawatthours (GWh), according to the Edison Electric Institute. This is equivalent to **178** on the weekly electric output index.

**WEEKLY ELECTRIC OUTPUT BY GEOGRAPHIC DIVISION**  
(48 CONTIGUOUS STATES)

	Week Ended August 30		52 Weeks Ended August 30	
	GWh Output	% Increase Over Corresponding Week of 2007	GWh Output	% Increase Over Corresponding Period of 2007
New England	2,570	-10.8	132,470	-0.2
Mid-Atlantic	9,190	-7.6	454,446	1.0
Central Industrial	14,403	-6.4	714,122	0.4
West Central	7,054	-5.2	347,330	-0.2
Southeast	22,212	-7.8	1,099,213	0.8
South Central	13,930	1.9	610,406	3.0
Rocky Mountain	6,674	2.5	276,906	2.5
Pacific Northwest	2,802	1.0	167,303	6.7
Pacific Southwest	7,054	-7.6	287,944	-1.9
Total United States	85,889	-5.0	4,090,140	1.1

**WEEKLY ELECTRIC OUTPUT IN PREVIOUS WEEKS--GWh**

Week Ended	2008	Week Ended	2007	% Inc. (08/07)	52 Weeks Ended	2008	% Inc. (08/07)
Aug 09	91,266	Aug 11	96,955	-5.9	Aug 09	4,112,434	2.1
Aug 16	84,228	Aug 18	94,455	-10.8	Aug 16	4,102,207	1.7
Aug 23	85,978	Aug 25	93,569	-8.1	Aug 23	4,094,616	1.4
Aug 30	85,889	Sep 01	90,365	-5.0	Aug 30	4,090,140	1.1
<b>Aug 30</b>	<b>2,776,353</b>	<b>Sep 01</b>	<b>2,786,825</b>	<b>-0.4</b>	<b>YEAR TO DATE, FIRST 35 WEEKS</b>		

**WEEKLY ELECTRIC OUTPUT INDEX--TOTAL U.S.\***  
SEASONALLY ADJUSTED 1982 = 100

Week Ended	2008	Week Ended	2007	Week Ended	2006
Aug 09	175	Aug 11	190	Aug 12	186
Aug 16	172	Aug 18	189	Aug 19	179
Aug 23	178	Aug 25	189	Aug 26	181
Aug 30	178	Sep 01	183	Sep 02	171

\* Excludes Alaska and Hawaii.

+ Includes investor-owned companies, cooperatives and government-owned utilities.

Copyright © 2008 Edison Electric Institute. All rights reserved.

### WEEKLY ELECTRIC OUTPUT BY GEOGRAPHIC DIVISION (48 CONTIGUOUS STATES)

	Week Ended			NMA CUMULATIVE JANUARY WEEK ONE TO			52 Weeks Ended		
	30-Aug 2008 GWh Output	1-Sep 2007 GWh Output	% Increase Over Corresponding Week of 2007	30-Aug 2008 GWh Output	1-Sep 2007 GWh Output	% Increase Over Corresponding Week of 2007	30-Aug 2008 GWh Output	1-Sep 2007 GWh Output	% Increase Over Corresponding Week of 2007
<b>New England</b>	2,570	2,882	-10.8%	<b>89,547</b>	<b>91,523</b>	<b>-2.2%</b>	132,470	132,699	-0.2%
<b>Mid-Atlantic</b>	9,190	9,944	-7.6%	<b>308,294</b>	<b>312,515</b>	<b>-1.4%</b>	454,446	449,944	1.0%
<b>Central Industrial</b>	14,403	15,394	-6.4%	<b>483,482</b>	<b>491,498</b>	<b>-1.6%</b>	714,122	711,276	0.4%
<b>West Central</b>	7,054	7,444	-5.2%	<b>236,163</b>	<b>241,046</b>	<b>-2.0%</b>	347,330	348,133	-0.2%
<b>Southeast</b>	22,212	24,102	-7.8%	<b>743,158</b>	<b>750,605</b>	<b>-1.0%</b>	1,099,213	1,090,445	0.8%
<b>South Central</b>	13,930	13,676	1.9%	<b>422,689</b>	<b>410,420</b>	<b>3.0%</b>	610,406	592,388	3.0%
<b>Rocky Mountain</b>	6,674	6,510	2.5%	<b>184,343</b>	<b>184,865</b>	<b>-0.3%</b>	276,906	270,200	2.5%
<b>Pacific Northwest</b>	2,802	2,775	1.0%	<b>113,304</b>	<b>105,081</b>	<b>7.8%</b>	167,303	156,802	6.7%
<b>Pacific Southwest</b>	7,054	7,638	-7.6%	<b>195,375</b>	<b>199,271</b>	<b>-2.0%</b>	287,944	293,592	-1.9%
<b>Total United States *</b>	<u>85,889</u>	<u>90,365</u>	-5.0%	<u><b>2,776,355</b></u>	<u><b>2,786,824</b></u>	<u><b>-0.4%</b></u>	<u>4,090,140</u>	<u>4,045,479</u>	1.1%

Notes: EEI output data are an estimate of electricity load made available for distribution derived as weekly net generation + purchases from non-utilities + net imports - exports - sales for resale. It is not meant to be a measure of electricity generation for the U.S. EEI survey data represent the majority of national distribution (large utilities, large government power projects, some independent and large municipal power projects). The remaining segment of the industry (smaller producers) is estimated. Non-utility generation is captured via direct sales to utilities.

\* Excludes Alaska and Hawaii

\*\* Less than one-tenth of one percent

SOURCE: Edison Electric Institute (EEI), *Weekly Electric Output Report*.

AMERICAN IRON AND STEEL INSTITUTE  
 1140 Connecticut Avenue, Suite 705  
 Washington, D.C. 20036

September 2, 2008

**ESTIMATED WEEKLY RAW STEEL \* PRODUCTION**

<u>Period</u>	<u>Thousand Net Tons</u>	<u>Percent Change from Previous Period</u>	<u>Percent Capability Utilization**</u>	<u>Production by District</u>		
				<u>Week Ending</u>		
				<u>Aug. 30</u>	<u>Aug. 23</u>	
<b><u>Week Ending</u></b>						
August 30, 2008	2,087	-1.8	87.5	190	179	
August 30, 2007	2,075	0.6	87.7	172	184	
August 23, 2008	2,125	-2.0	89.1	94	94	
				82	109	
				529	516	
				257	267	
				668	680	
				95	96	
				<b>Total</b>	<b>2,087</b>	<b>2,125</b>
<b><u>Year-to-Date+</u></b>						
August 30, 2008	73,476	2.5	88.7			
August 30, 2007	71,712	-	86.1			

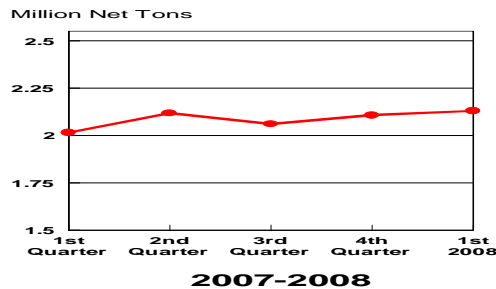
\*Raw steel production tonnage included in this report is estimated based on a sampling of steel producers. Therefore, this report should be used primarily to assess production trends. The AISI production report "AIS 7," produced monthly and available by subscription, provides a more accurate summary of steel production based on data supplied by companies representing approximately 75% of U.S. production capacity.

+ Includes revisions for previous months

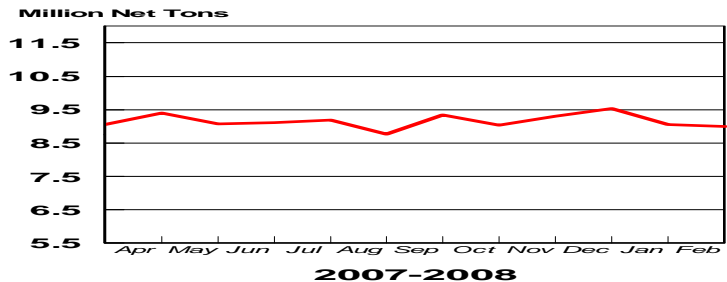
NOTE: Capability for the Third Quarter 2008 is approximately 31.4 million net tons vs 30.1 million net tons for the same period last year, and 31.0 million tons for the second quarter of 2008.

Capability -	2004 approx.	2005	2006	2007	2008
	2.2 million tons/week	2.3	2.4	2.4	2.4

**Average Weekly Raw Steel Production**

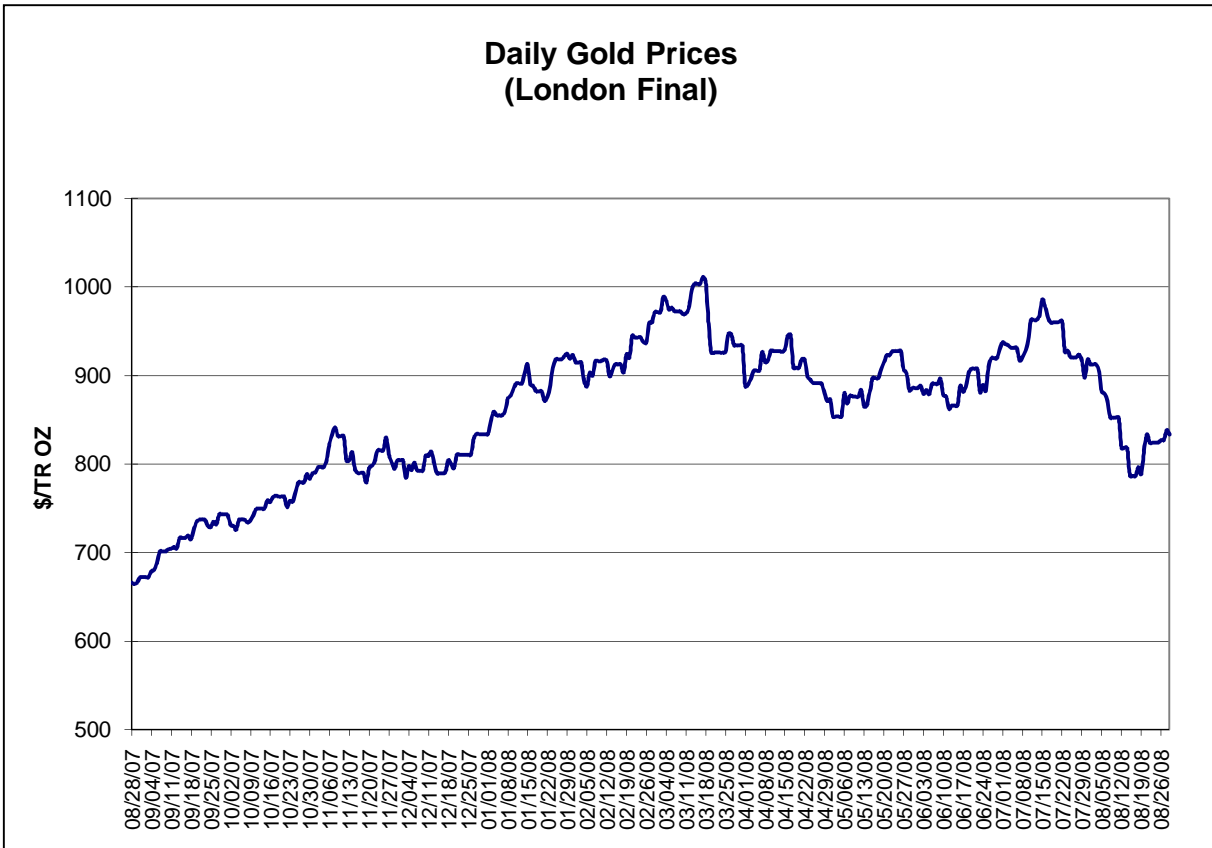
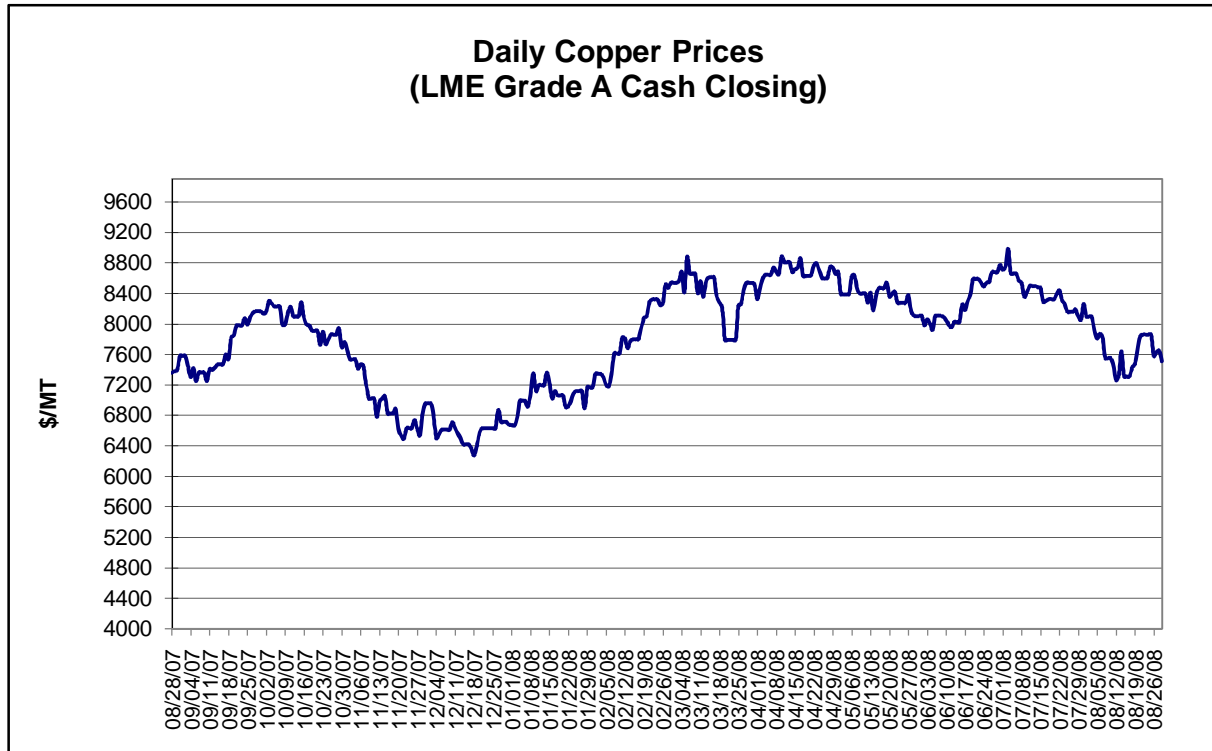


**Monthly Raw Steel Production**



\*Steel in the first solid state after melting suitable for further processing or sale, including ingots, steel for castings and strand or pressure cast blooms, slabs, or other product forms.

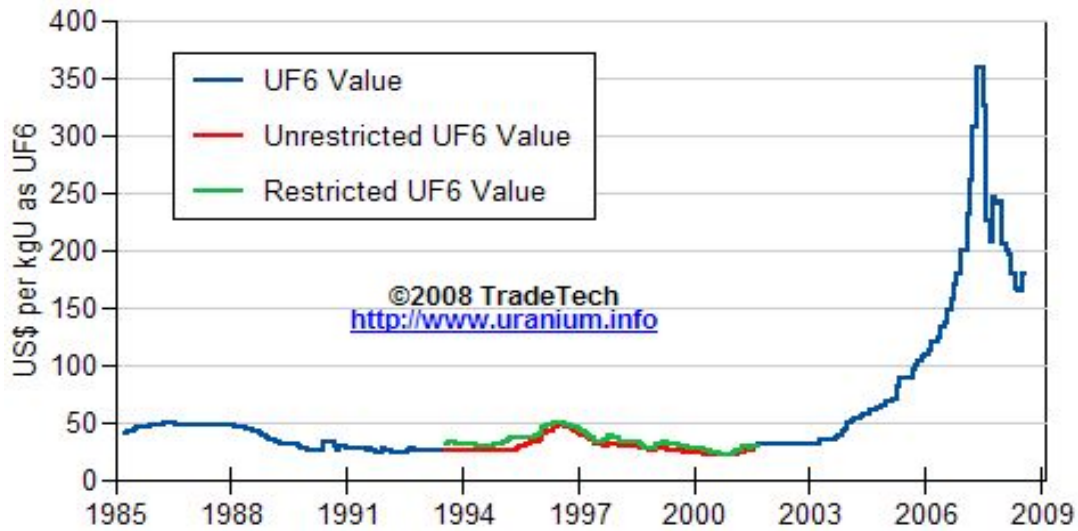
\*\* Based on tonnage capability to produce raw steel for a sustained full order book.



Data reflect closings on weekends and holidays.

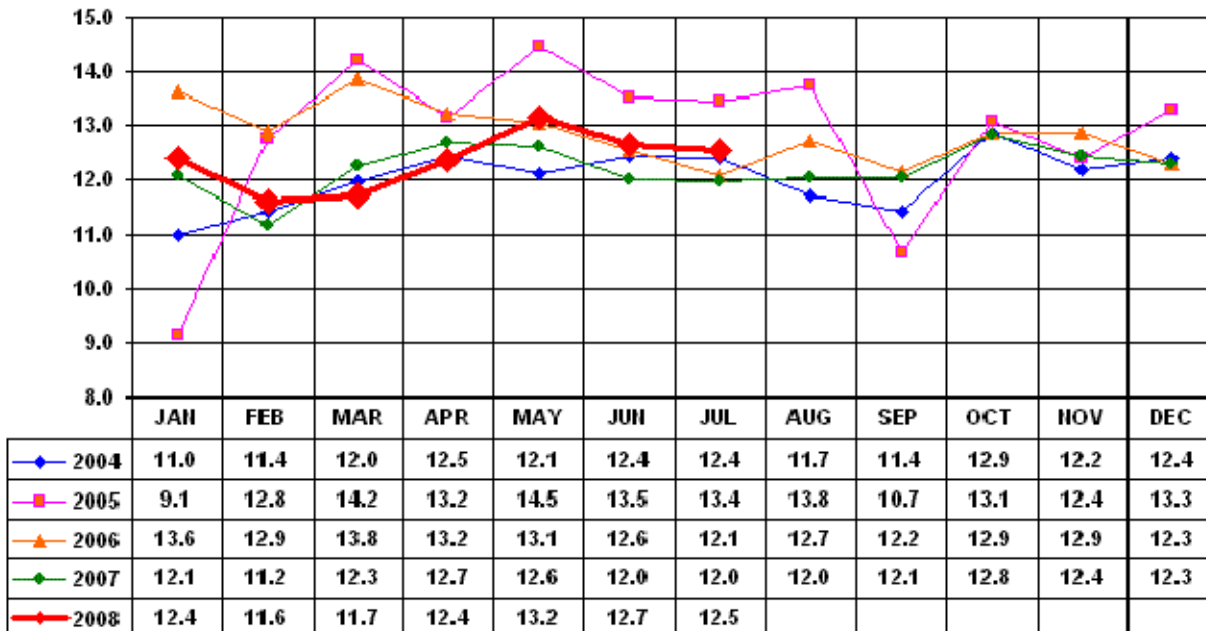
Source: Platts Metals Week

### Trade Tech's Uranium (UF6) Monthly Spot Prices (US\$/kg as UF6)



Source: Trade Tech, Uranium Info Website – <http://www.uranium.info>

### Coal and Coke Monthly Tonnage Indicator for Internal U.S. Waterways

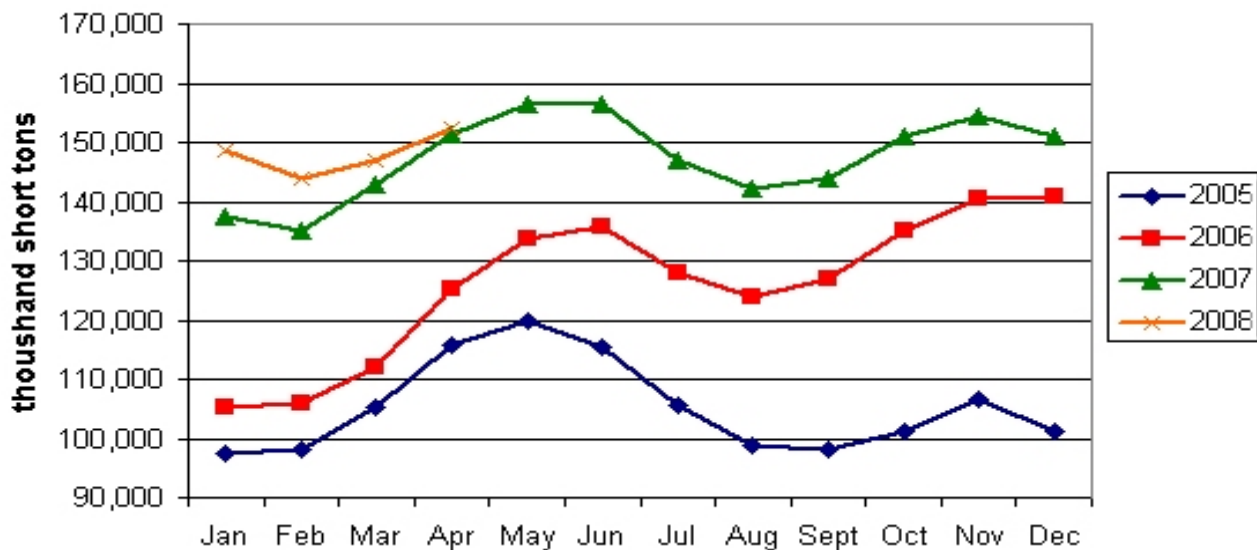


Source: U.S. Army Corps of Engineers, Waterborne Commerce Statistics Center

Average Weekly Coal Commodity Spot Prices (Dollars per Short Ton)					
Week Ended	Central Appalachia 12,500 Btu, 1.2 SO2	Northern Appalachia 13,000 Btu, <3.0 SO2	Illinois Basin 11,800 Btu, 5.0 SO2	Powder River Basin 8,800 Btu, 0.8 SO2	Uinta Basin 11,700 Btu, 0.8 SO2
25-July-08	\$140.00	\$149.00	\$71.00	\$12.50	\$62.00
01-Aug-08	\$140.00	\$149.00	\$71.00	\$12.50	\$62.00
08-Aug-08	\$140.00	\$146.00	\$95.00	\$12.50	\$62.00
15-Aug-08	\$140.00	\$145.00	\$93.00	\$12.50	\$62.00
22-Aug-08	\$140.00	\$144.00	\$93.00	\$11.00	\$62.00
29-Aug-08	\$140.00	\$144.00	\$83.00	\$11.00	\$62.00

Source: Energy Information Administration (from Platts *Coal Outlook*, "Weekly Price Survey")

### EIA Electric Power Sector Coal Stocks



Source: Energy Information Administration

<b>USGS Production of Selected Mineral Commodities</b>	<b>2008 Year to Date - 2nd Quarter</b>	<b>2007 Year to Date - 2nd Quarter</b>	<b>Percent Change</b>
Aluminum, secondary (000 Mt.)	445.0	477.0	-7%
Cement (Mil. Mt.)	41.1	43.7	-6%
Gypsum (Mil. Mt.)	9.4	10.9	-14%
Iron Ore (Mil. Mt.)	26.8	25.1	7%
Phosphate rock (Mil. Mt.)	15.3	14.7	4%
Sand & gravel, construction (Mil. Mt.)	477.0	533.0	-11%
Soda ash (Mil. Mt.)	5.6	5.5	2%
Stone, crushed (Mil. Mt.)	664.0	730.0	-9%
Zinc (000 Mt.)	420.0	365.0	15%

Source: U.S. Geological Survey, Mineral Industry Surveys, *U.S. Production of Selected Mineral Commodities in the First Quarter 2008*, August 2008