
National Mining Association

Weekly Statistical Summary

September 7, 2007 Edition
(Data for Week Ending September 1, 2007)

Prepared by
National Mining Association



Suite 500 East, 101 Constitution Avenue, NW
Washington, DC, 20001
Phone (202) 463-2600
Visit us at <http://www.nma.org>

NMA Weekly Statistical Summary

Vol. 45, No. 35
Dated 09/07/07

| PRODUCTION, CONSUMPTION & TRADE | | | | | | |
|--|-------------------|-----------|--------|----------------------------------|-----------|--------|
| | Week Ended | | | Cumulative Jan 1 to | | |
| | 09/01/07 | 09/02/06 | % Chng | 09/01/07 | 09/02/06 | % Chng |
| EIA Coal Production (000 Tons): | | | | | | |
| Week Ended/Year to Date | 22,517 | 22,459 | 0.3% | 765,052 | 780,938 | -2.0% |
| 52 Weeks Ended | 1,143,854 | 1,151,036 | -0.6% | | | |
| Month Ended -- July | | | | | | |
| | 93,684 | 94,985 | -1.4% | 661,873 | 676,484 | -2.2% |
| MONTH ENDED AND CUMULATIVE NUMBERS ARE PRELIMINARY AND SUBJECT TO CHANGE | | | | | | |
| DOC Bituminous Coal Trade (000 Tons) | | | | | | |
| Exports: | June 07/06 | | | Jan - June 07/06 | | |
| | | | % Chng | | | % Chng |
| Metallurgical | 2,893 | 2,496 | 15.9% | 14,642 | 13,721 | 6.7% |
| Steam | 2,195 | 1,847 | 18.8% | 10,993 | 9,335 | 17.8% |
| Imports: | 3,027 | 2,185 | 38.5% | 17,191 | 16,914 | 1.6% |
| Week Ended | | | | | | |
| | 09/01/07 | 09/02/06 | % Chng | 09/01/07 | 09/02/06 | % Chng |
| EEl Electric Output (Mil. Kwh) | 90,365 | 84,076 | 7.5% | 2,786,825 | 2,730,215 | 2.1% |
| AISI Raw Steel Output (000 Tons) | 2,062 | 2,094 | -1.5% | 70,988 | 74,897 | -5.2% |
| EIA U.S. PETROLEUM DATA | | | | | | |
| 4-Week Averages 000 Barrels per Day | | | | | | |
| Week Ending | | | | | | |
| | 08/24/07 | 08/24/06 | % Chng | Cumulative Daily Averages | | |
| PETROLEUM SUPPLY: | | | | 2007 | 2006 | % Chng |
| Domestic Crude | 5,154 | 5,158 | 0.1 | 5,183 | 5,101 | 1.6 |
| Net Imports (Incl. SPR) | 10,103 | 10,454 | -3.4 | 10,102 | 10,066 | 0.4 |
| SPR Stocks W/D or Added | 0 | 0 | -- | -7 | -14 | -- |
| Other Stocks W/D or added | 389 | 26 | -- | -127 | -32 | -- |
| Natural Gas Liquids Prod. | 2,463 | 2,245 | 9.7 | 2,380 | 2,186 | 8.9 |



NMA

THE AMERICAN RESOURCE

National Mining Association Web Site: [http:// www.nma.org](http://www.nma.org)

EIA Estimated Weekly U.S. Coal Production Overview (Thousand Short Tons)

| Coal-Producing Region and State | Week Ended | | | Year to Date | | | 52 Weeks Ended | | |
|------------------------------------|---------------|---------------|---------------|----------------|----------------|-------------------|------------------|------------------|-------------------|
| | 9/1/2007 | 8/25/2007 | 9/2/2006 | 9/1/2007 | 9/1/2006 | Percent Change | 9/1/2007 | 9/2/2006 | Percent Change |
| Alabama | 397 | 412 | 352 | 13,653 | 13,138 | 3.9 | 19,535 | 19,546 | -0.1 |
| Alaska | 27 | 28 | 25 | 1,032 | 938 | 10.1 | 1,519 | 1,321 | 15.0 |
| Arizona | 153 | 159 | 168 | 5,307 | 5,497 | -3.5 | 8,026 | 9,194 | -12.7 |
| Arkansas | 1 | 1 | s | 32 | 12 | 163.9 | 42 | 13 | 225.4 |
| Colorado | 759 | 787 | 734 | 24,188 | 23,725 | 2.0 | 36,708 | 35,693 | 2.8 |
| Illinois | 641 | 664 | 658 | 23,242 | 21,733 | 6.9 | 33,673 | 31,538 | 6.8 |
| Indiana | 706 | 733 | 691 | 24,126 | 23,870 | 1.1 | 35,974 | 35,241 | 2.1 |
| Kansas | 9 | 9 | 9 | 298 | 243 | 22.7 | 481 | 296 | 62.5 |
| Kentucky Total | 2,299 | 2,384 | 2,299 | 78,641 | 82,767 | -5.0 | 116,156 | 121,594 | -4.5 |
| Eastern | 1,725 | 1,789 | 1,782 | 58,857 | 64,438 | -8.7 | 87,452 | 94,499 | -7.5 |
| Western | 574 | 595 | 517 | 19,785 | 18,329 | 7.9 | 28,704 | 27,095 | 5.9 |
| Louisiana | 71 | 73 | 90 | 2,037 | 2,704 | -24.6 | 3,438 | 4,075 | -15.6 |
| Maryland | 103 | 107 | 121 | 2,796 | 3,901 | -28.3 | 3,948 | 5,521 | -28.5 |
| Mississippi | 64 | 64 | 71 | 2,487 | 2,632 | -5.5 | 3,645 | 3,828 | -4.8 |
| Missouri | 6 | 6 | 4 | 187 | 303 | -38.3 | 278 | 517 | -46.2 |
| Montana | 800 | 830 | 837 | 27,145 | 27,509 | -1.3 | 41,358 | 40,865 | 1.2 |
| New Mexico | 500 | 518 | 491 | 16,175 | 17,043 | -5.1 | 25,035 | 26,657 | -6.1 |
| North Dakota | 522 | 542 | 621 | 18,907 | 19,978 | -5.4 | 29,340 | 30,181 | -2.8 |
| Ohio | 474 | 492 | 438 | 15,746 | 15,369 | 2.5 | 23,084 | 23,491 | -1.7 |
| Oklahoma | 40 | 41 | 37 | 1,269 | 1,399 | -9.3 | 1,868 | 2,020 | -7.5 |
| Pennsylvania Total | 1,216 | 1,262 | 1,202 | 43,465 | 45,147 | -3.7 | 64,386 | 67,565 | -4.7 |
| Anthracite | 27 | 28 | 31 | 987 | 1,026 | -3.8 | 1,475 | 1,611 | -8.4 |
| Bituminous | 1,189 | 1,234 | 1,171 | 42,479 | 44,121 | -3.7 | 62,911 | 65,954 | -4.6 |
| Tennessee | 56 | 58 | 55 | 1,908 | 1,927 | -1.0 | 2,786 | 2,946 | -5.5 |
| Texas | 912 | 946 | 966 | 29,361 | 30,423 | -3.5 | 44,361 | 46,368 | -4.3 |
| Utah | 462 | 479 | 455 | 15,966 | 17,403 | -8.3 | 24,570 | 25,414 | -3.3 |
| Virginia | 571 | 592 | 575 | 19,452 | 20,383 | -4.6 | 28,916 | 29,143 | -0.8 |
| Washington | 0 | 0 | 53 | 0 | 1,950 | -100.0 | 630 | 3,504 | -82.0 |
| West Virginia Total | 2,937 | 3,046 | 2,871 | 102,994 | 104,148 | -1.1 | 150,624 | 153,447 | -1.8 |
| Northern | 909 | 943 | 769 | 31,432 | 29,694 | 5.9 | 44,408 | 43,710 | 1.6 |
| Southern | 2,027 | 2,103 | 2,103 | 71,562 | 74,454 | -3.9 | 106,216 | 109,737 | -3.2 |
| Wyoming | 8,791 | 8,405 | 8,637 | 294,636 | 296,799 | -0.7 | 443,471 | 431,058 | 2.9 |
| Appalachian Total | 7,480 | 7,759 | 7,396 | 258,872 | 268,451 | -3.6 | 380,732 | 396,159 | -3.9 |
| Interior Total | 3,023 | 3,133 | 3,043 | 102,823 | 101,646 | 1.2 | 152,465 | 150,990 | 1.0 |
| Western Total | 12,014 | 11,748 | 12,020 | 403,356 | 410,841 | -1.8 | 610,658 | 603,887 | 1.1 |
| East of Miss. River | 9,464 | 9,815 | 9,333 | 328,511 | 335,014 | -1.9 | 482,727 | 493,860 | -2.3 |
| West of Miss. River | 13,053 | 12,825 | 13,127 | 436,540 | 445,924 | -2.1 | 661,127 | 657,175 | 0.6 |
| Bituminous and Lignite | 22,490 | 22,612 | 22,429 | 764,065 | 779,913 | -2.0 | 1,142,379 | 1,149,425 | -0.6 |
| Anthracite | 27 | 28 | 31 | 987 | 1,026 | -3.8 | 1,475 | 1,611 | -8.4 |
| U.S. Total | 22,517 | 22,640 | 22,459 | 765,052 | 780,938 | -2.0 | 1,143,854 | 1,151,036 | -0.6 |
| Railroad Cars Loaded | 147,552 | 148,388 | 149,451 | 4,942,444 | 5,006,597 | -1.3 | 7,391,204 | 7,342,116 | 0.7 |

Source: Energy Information Administration



Volume 75 No. 35

OUTPUT FOR WEEK ENDED - Sep 01, 2007

Sep 06, 2007

The net available amount of electric energy distributed by the Total Electric Utility Industry+ for the week ended Saturday, Sep 01, 2007 was 90,365 gigawatthours (GWh), according to the Edison Electric Institute. This is equivalent to 183 on the weekly electric output index.

WEEKLY ELECTRIC OUTPUT BY GEOGRAPHIC DIVISION
(48 CONTIGUOUS STATES)

| | Week Ended September 01 | | 52 Weeks Ended September 01 | |
|---------------------|-------------------------|--|-----------------------------|--|
| | GWh Output | % Increase Over Corresponding Week of 2006 | GWh Output | % Increase Over Corresponding Period of 2006 |
| New England | 2,882 | 18.4 | 132,699 | -0.7 |
| Mid-Atlantic | 9,944 | 11.8 | 449,944 | 0.0 |
| Central Industrial | 15,394 | 10.0 | 711,276 | 1.1 |
| West Central | 7,444 | 7.5 | 348,133 | 0.3 |
| Southeast | 24,102 | 4.9 | 1,090,445 | 1.1 |
| South Central | 13,676 | 0.7 | 592,388 | -1.4 |
| Rocky Mountain | 6,510 | 15.6 | 270,200 | 4.5 |
| Pacific Northwest | 2,775 | 2.8 | 156,802 | 3.8 |
| Pacific Southwest | 7,638 | 10.2 | 293,592 | 0.9 |
| Total United States | 90,365 | 7.5 | 4,045,478 | 0.8 |

WEEKLY ELECTRIC OUTPUT IN PREVIOUS WEEKS--GWh

| Week Ended | 2007 | Week Ended | 2006 | % Inc. (07/06) | 52 Weeks Ended | 2007 | % Inc. (07/06) |
|------------|-----------|------------|-----------|----------------|------------------------------|-----------|----------------|
| Aug 11 | 96,955 | Aug 12 | 92,651 | 4.6 | Aug 11 | 4,029,137 | 0.3 |
| Aug 18 | 94,455 | Aug 19 | 88,941 | 6.2 | Aug 18 | 4,034,651 | 0.5 |
| Aug 25 | 93,569 | Aug 26 | 89,030 | 5.1 | Aug 25 | 4,039,190 | 0.6 |
| Sep 01 | 90,365 | Sep 02 | 84,076 | 7.5 | Sep 01 | 4,045,478 | 0.8 |
| Sep 01 | 2,786,825 | Sep 02 | 2,730,215 | 2.1 | YEAR TO DATE, FIRST 35 WEEKS | | |

WEEKLY ELECTRIC OUTPUT INDEX--TOTAL U.S.*
SEASONALLY ADJUSTED 1982 = 100

| Week Ended | 2007 | Week Ended | 2006 | Week Ended | 2005 |
|------------|------|------------|------|------------|------|
| Aug 11 | 190 | Aug 12 | 186 | Aug 13 | 180 |
| Aug 18 | 189 | Aug 19 | 179 | Aug 20 | 178 |
| Aug 25 | 189 | Aug 26 | 181 | Aug 27 | 177 |
| Sep 01 | 183 | Sep 02 | 171 | Sep 03 | 181 |

* Excludes Alaska and Hawaii

+ Includes investor-owned companies, cooperatives and government-owned utilities.

Copyright © 2007 Edison Electric Institute. All rights reserved.

WEEKLY ELECTRIC OUTPUT BY GEOGRAPHIC DIVISION (48 CONTIGUOUS STATES)

| | Week Ended | | | NMA CUMULATIVE JANUARY 1 to | | | 52 Weeks Ended | | |
|------------------------------|--------------------------------|--------------------------------|--|--------------------------------|--------------------------------|--|--------------------------------|--------------------------------|--|
| | 1-Sep 2007 GWh Output | 2-Sep 2006 GWh Output | % Increase Over Corresponding Week of 2006 | 1-Sep 2007 GWh Output | 2-Sep 2006 GWh Output | % Increase Over Corresponding Week of 2006 | 1-Sep 2007 GWh Output | 2-Sep 2006 GWh Output | % Increase Over Corresponding Week of 2006 |
| New England | 2,882 | 2,435 | 18.4% | 91,523 | 90,648 | 1.0% | 132,699 | 133,664 | -0.7% |
| Mid-Atlantic | 9,944 | 8,898 | 11.8% | 312,515 | 306,321 | 2.0% | 449,944 | 449,962 | 0.0% |
| Central Industrial | 15,394 | 13,994 | 10.0% | 491,498 | 475,108 | 3.4% | 711,276 | 703,776 | 1.1% |
| West Central | 7,444 | 6,925 | 7.5% | 241,046 | 237,064 | 1.7% | 348,133 | 347,108 | 0.3% |
| Southeast | 24,102 | 22,983 | 4.9% | 750,605 | 732,250 | 2.5% | 1,090,445 | 1,078,590 | 1.1% |
| South Central | 13,676 | 13,581 | 0.7% | 410,420 | 416,403 | -1.4% | 592,388 | 600,781 | -1.4% |
| Rocky Mountain | 6,510 | 5,632 | 15.6% | 184,865 | 175,287 | 5.5% | 270,200 | 258,517 | 4.5% |
| Pacific Northwest | 2,775 | 2,699 | 2.8% | 105,081 | 99,654 | 5.4% | 156,802 | 151,015 | 3.8% |
| Pacific Southwest | <u>7,638</u> | <u>6,929</u> | 10.2% | <u>199,271</u> | <u>197,482</u> | 0.9% | <u>293,592</u> | <u>290,862</u> | 0.9% |
| Total United States * | 90,365 | 84,076 | 7.5% | 2,786,824 | 2,730,217 | 2.1% | 4,045,479 | 4,014,275 | 0.8% |

Notes: EEI output data are an estimate of electricity load made available for distribution derived as weekly net generation + purchases from non-utilities + net imports - exports - sales for resale. It is not meant to be a measure of electricity generation for the U.S. EEI survey data represent the majority of national distribution (large utilities, large government power projects, some independent and large municipal power projects). The remaining segment of the industry (smaller producers) is estimated. Non-utility generation is captured via direct sales to utilities.

* Excludes Alaska and Hawaii

** Less than one-tenth of one percent

SOURCE: Edison Electric Institute (EEI), *Weekly Electric Output Report*.

AMERICAN IRON AND STEEL INSTITUTE
 1140 Connecticut Avenue, Suite 705
 Washington, D.C. 20036

September 4, 2007

ESTIMATED WEEKLY RAW STEEL* PRODUCTION

| <u>Period</u> | Thousand <u>Net Tons</u> | Percent Change from Previous <u>Period</u> | Percent Capability <u>Utilization**</u> | <u>Production by District</u> | | |
|-----------------------------|-----------------------------|---|---|------------------------------------|---------------|-----------|
| | | | | <u>Week Ending</u> <u>Sep 1</u> | <u>Aug 25</u> | |
| <u>Week Ending</u> | | | | North East Coast | 131 | 134 |
| | | | | Pgh/Youngstown | 204 | 201 |
| | | | | Lake Erie | 98 | 99 |
| Sept 1, 2007 | 2,062 | -2.4 | 87.1 | Detroit | 127 | 126 |
| Sept 1, 2006 | 2,094 | -1.5 | 88.7 | Indiana/Chicago | 522 | 526 |
| Aug 25, 2007 | 2,114 | 1.7 | 89.3 | Midwest | 243 | 268 |
| | | | | Southern | 647 | 667 |
| | | | | Western | <u>90</u> | <u>93</u> |
| | | | | Total | 2062 | 2114 |
| | | | | | | |
| <u>Year-to-Date+</u> | | | | | | |
| Sept 1, 2007 | 70,988 | -5.2 | 85.3 | | | |
| Sept 1, 2006 | 74,897 | - | 90.2 | | | |

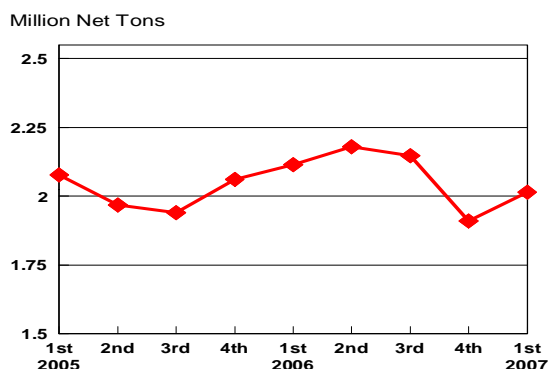
*Raw steel production tonnage included in this report is estimated based on a sampling of steel producers. Therefore, this report should be used primarily to assess production trends. The AISI production report "AIS 7," produced monthly and available by subscription, provides a more accurate summary of steel production based on data supplied by companies representing approximately 75% of U.S. production capacity.

+Includes revisions for previous months

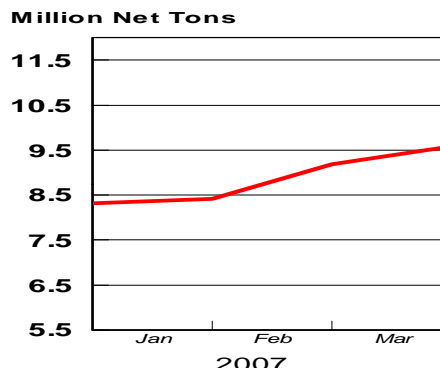
NOTE: Capability for the First Quarter 2007 is approximately 31.2 million net tons vs 30.5 million net tons for the same period last year, and 30.7 million tons for the fourth quarter of 2006.

| | | |
|--------------|--------------|-----------------------|
| Capability - | 2003 approx. | 2.3 million tons/week |
| | 2004 | 2.2 |
| | 2005 | 2.3 |
| | 2006 | 2.4 |
| | 2007 | 2.4 |

Average Weekly Raw Steel Production

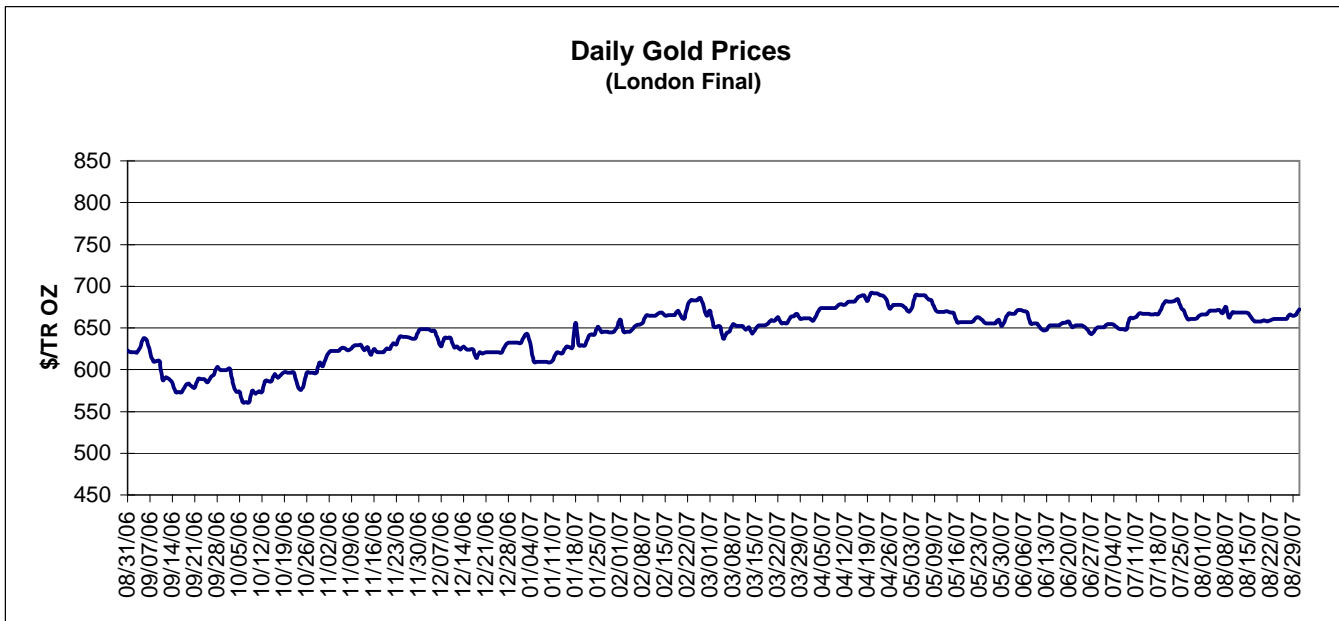
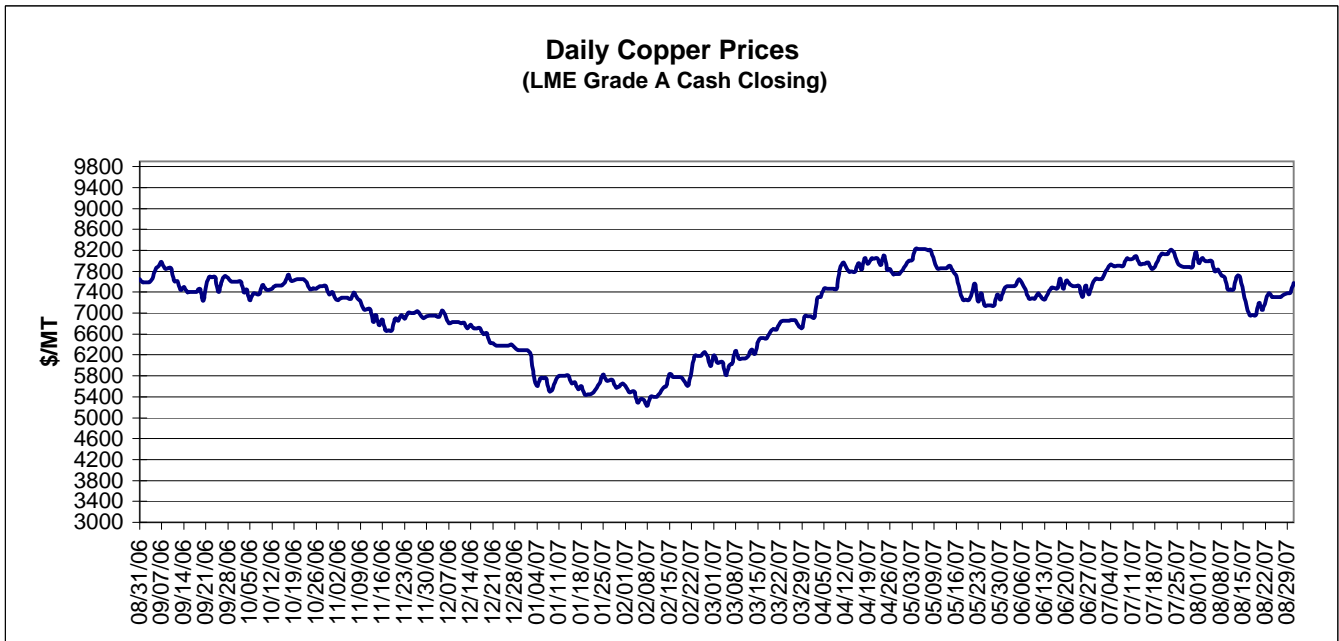


MONTHLY RAW STEEL PRODUCTION



*Steel in the first solid state after melting suitable for further processing or sale, including ingots, steel for castings and strand or pressure cast blooms, slabs, or other product forms.

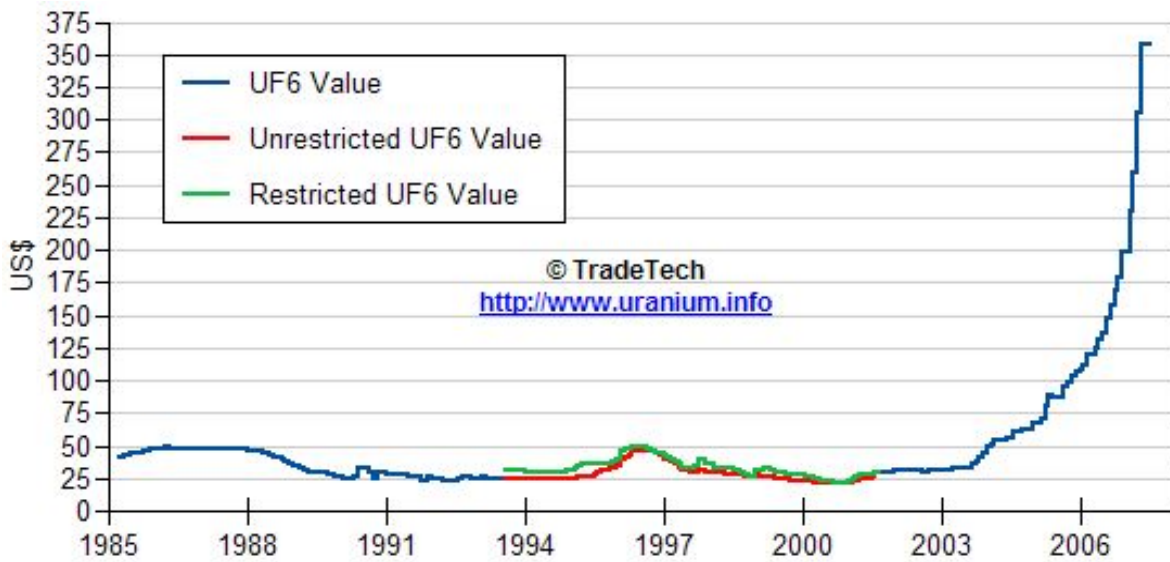
** Based on tonnage capability to produce raw steel for a sustained full order book.



Data reflect closings on weekends and holidays.

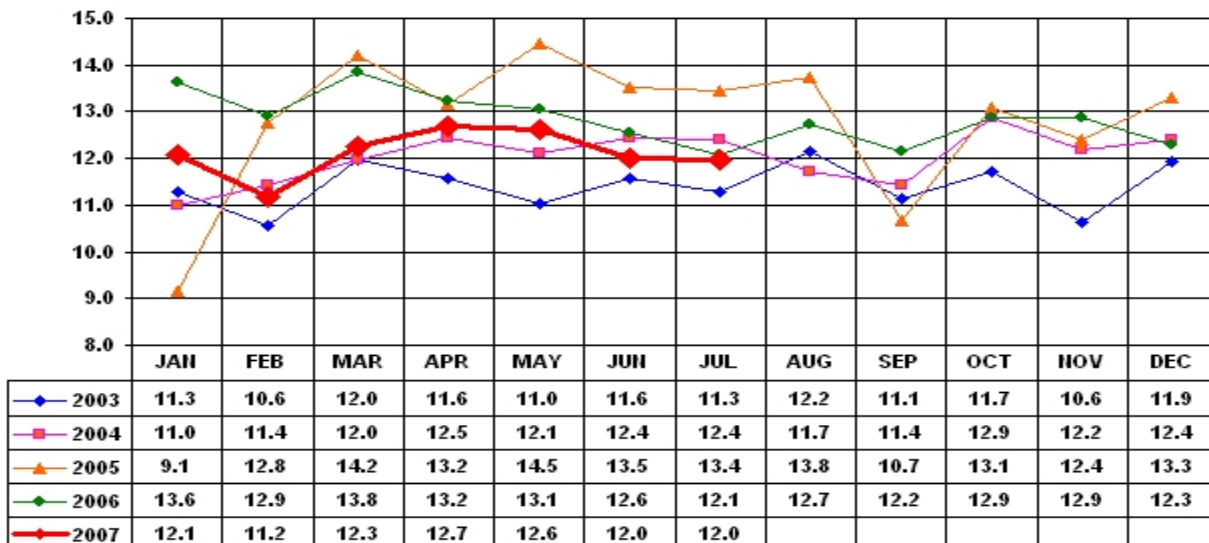
Source: Platts Metals Week

Trade Tech's Uranium (UF6) Monthly Spot Prices (US\$/kg as UF6)



Source: Trade Tech, Uranium Info Website – <http://www.uranium.info>

Coal and Coke Monthly Tonnage Indicator for Internal U.S. Waterways



Source: U.S. Army Corps of engineers, Waterborne Commerce Statistics Center