
National Mining Association

Weekly Statistical Summary

September 23, 2016 Edition
(Data for Week Ending August 17, 2016)

Prepared by
National Mining Association



Suite 500 East, 101 Constitution Avenue, NW
Washington, DC, 20001
Phone (202) 463-2600
Visit us at <http://www.nma.org>

NMA Weekly Statistical Summary

Vol. 54, No. 38
Dated 09/23/16

PRODUCTION, CONSUMPTION & TRADE

	Week Ended			* Cumulative Jan 1 to		
	09/17/16	09/19/15	% Chng	09/17/16	09/17/15	% Chng
EIA Coal Production (000 Tons):						
Week Ended/Year to Date	16,103	18,128	-11.2%	501,198	656,563	-23.7%
52 Weeks Ended	736,537	943,299	-21.9%			
AAR Coal Rail Cars Loaded:	90,369	87,058	3.8%	2,791,569	3,769,455	-25.9%
Coal Production	Aug 16/15		% Chng	Jan - Aug 16/15		% Chng
Month Ended - August	71,258	82,682	-13.8%	455,160	611,962	-25.6%
DOC Bituminous Coal Trade (000 Tons)						
Exports:	July 16/15		% Chng	Jan - July 16/15		% Chng
Metallurgical	2,425	2,933	-17.3%	22,640	29,179	-22.4%
Steam *	844	2,178	-61.2%	8,707	17,456	-50.1%
Lignite	6	5	20.0%	40	36	11.1%
Anthracite	5	5	0.0%	293	215	36.3%
Total	3,280	5,121	-36.0%	31,680	46,886	-32.4%
Imports:	990	1,091	-9.3%	5,979	6,740	-11.3%
	Week Ended			Cumulative Jan 1 to		
	09/17/16	09/19/15	% Chng	09/17/16	09/19/15	% Chng
EEl Electric Total Output (Mil. Kwh)	80,570	77,331	4.2%	2,998,516	3,019,325	-0.7%
EEl Coal Region Output (Mil. Kwh)	70,217	66,298	5.9%	2,586,730	2,603,991	-0.7%
AISI Raw Steel Output (000 Tons)	1,632	1,687	-3.3%	64,177	65,061	-1.4%

EIA (SNL ENERGY) AVERAGE COAL SPOT PRICES Dollars Per Short Ton

Average Coal Spot Prices (\$/Short Ton)	Week Ending			Natural Gas Spot Prices (\$/MMBtu)	
	09/16/16	09/09/16	% Chng	Wed.	09/14/16
Central App, 12,500 Btu, 1.2 SO ₂	\$40.20	\$41.10	-2.2%	Henry Hub	3.04
Northern App, 13,000 Btu, < 3.0 SO ₂	41.45	42.35	-2.1%	New York	1.35
Illinois Basin, 11,800, 5.0 SO ₂	32.00	32.00	0.0%	Chicago	2.92
Powder River Basin, 8,800 Btu 0.8 SO ₂	8.25	8.70	-5.2%	Cal.Comp.Avg.	3.05
Uinta Basin, 11,700 Btu, 0.8 SO ₂	39.40	39.40	0.0%		

Coal exports and Imports are "as reported" (not revised); *Steam excludes lignite & anthracite. All data in this report are preliminary and subject to revision.

Sources: Energy Information Administration; Edison Electric Institute; American Iron & Steel Institute; Association of American Railroads; Dept. of Commerce; SNL Energy; NGI's Daily Gas Price Index



NMA
THE AMERICAN RESOURCE

National Mining Association Web Site: [http:// www.nma.org](http://www.nma.org)

EIA Estimated Weekly U.S. Coal Production Overview

Coal-Producing Region & State (thousand short tons)	Week Ended			Year to Date			52 Weeks Ended		
	9/17/2016 (week 38)	9/10/2016 (week 37)	9/19/2015 (week 38)	9/17/2016	9/17/2015	% Change	9/17/2016	9/19/2015	% Change
Alabama	178	179	249	6,580	10,380	-36.6	9,323	14,947	-37.6
Alaska	21	22	20	772	830	-7.0	1,114	1,200	-7.2
Arizona	113	103	135	3,761	5,182	-27.4	5,346	7,530	-29.0
Arkansas	2	1	2	45	70	-35.7	66	109	-39.4
Colorado	289	246	404	8,501	14,882	-42.9	12,385	21,359	-42.0
Illinois	918	877	1,070	31,105	42,292	-26.5	44,741	59,630	-25.0
Indiana	594	549	688	19,676	25,772	-23.7	28,007	36,983	-24.3
Kansas	5	4	3	115	139	-17.0	175	190	-7.9
Kentucky Total	992	921	1,207	32,216	46,276	-30.4	47,017	67,007	-29.8
Eastern (KY)	423	392	541	13,595	21,342	-36.3	20,192	31,078	-35.0
Western (KY)	569	529	666	18,621	24,934	-25.3	26,825	35,929	-25.3
Louisiana	78	66	94	2,114	2,501	-15.5	3,026	3,757	-19.5
Maryland	31	30	34	1,125	1,425	-21.1	1,605	1,973	-18.7
Mississippi	63	55	71	2,022	2,393	-15.5	2,752	3,260	-15.6
Missouri	2	2	3	85	116	-27.4	105	198	-47.0
Montana	753	699	888	22,695	30,695	-26.1	33,616	45,030	-25.3
New Mexico	448	424	429	12,896	13,980	-7.8	18,474	19,576	-5.6
North Dakota	598	558	581	19,163	20,784	-7.8	27,018	29,188	-7.4
Ohio	283	265	335	9,657	12,730	-24.1	13,874	18,387	-24.5
Oklahoma	14	13	14	459	573	-19.9	662	808	-18.1
Pennsylvania Total	934	845	1,111	28,944	38,111	-24.1	41,691	55,466	-24.8
Anthracite (PA)	48	45	46	1,393	1,514	-8.0	2,008	2,106	-4.7
Bituminous (PA)	886	800	1,065	27,551	36,597	-24.7	39,683	53,360	-25.6
Tennessee	19	18	19	598	649	-7.9	841	922	-8.8
Texas	793	748	836	24,095	24,947	-3.4	34,832	37,536	-7.2
Utah	264	252	291	8,931	10,463	-14.6	12,805	15,494	-17.4
Virginia	252	248	260	8,469	10,295	-17.7	12,188	14,428	-15.5
West Virginia Total	1,547	1,539	1,784	52,522	70,912	-25.9	76,743	101,042	-24.0
Northern (WV)	850	858	873	28,190	34,200	-17.6	41,530	48,043	-13.6
Southern (WV)	697	682	911	24,333	36,712	-33.7	35,213	52,998	-33.6
Wyoming	6,913	6,446	7,601	204,652	270,165	-24.2	308,131	387,279	-20.4
Appalachian Total	3,668	3,517	4,334	121,490	165,844	-26.7	176,457	238,243	-25.9
Interior Total	3,037	2,844	3,447	98,337	123,738	-20.5	141,190	178,401	-20.9
Western Total	9,398	8,752	10,348	281,371	366,981	-23.3	418,889	526,656	-20.5
East of Mississippi River	5,813	5,527	6,828	192,914	261,235	-26.2	278,782	374,046	-25.5
West of Mississippi River	10,291	9,586	11,300	308,284	395,328	-22.0	457,755	569,254	-19.6
Bituminous and Lignite	16,056	15,068	18,082	499,805	655,049	-23.7	734,529	941,193	-22.0
Anthracite	48	45	46	1,393	1,514	-8.0	2,008	2,106	-4.7
U.S. Total	16,103	15,113	18,128	501,198	656,563	-23.7	736,537	943,299	-21.9
Railroad Cars Loaded	90,369	87,058	103,244	2,791,569	3,769,455	-25.9	4,147,046	5,446,371	-23.9

Source: Energy Information Administration

Prepared by EEI's Business Information Group

WEEKLY ELECTRIC OUTPUT

Volume 84 No. 38

OUTPUT FOR WEEK ENDED - Sep 17, 2016

Sep 21, 2016

The net available amount of electric energy distributed by the Total Electric Utility Industry* for the week ended Saturday, **Sep 17, 2016** was **80,570** gigawatthours (GWh), according to the Edison Electric Institute. This is equivalent to **191** on the weekly electric output index.

WEEKLY ELECTRIC OUTPUT BY GEOGRAPHIC DIVISION

(48 CONTIGUOUS STATES)

	Week Ended September 17		52 Weeks Ended September 17	
	GWh Output	% Increase Over Corresponding Week of 2015	GWh Output	% Increase Over Corresponding Period of 2015
New England	2,348	-5.2	123,431	-3.9
Mid-Atlantic	8,633	2.0	432,237	-3.9
Central Industrial	12,851	2.2	672,591	-1.7
West Central	6,320	-1.4	328,969	-0.9
Southeast	21,318	16.0	1,019,921	-0.8
South Central	15,800	5.8	706,379	-0.4
Rocky Mountain	5,295	-4.2	277,963	1.0
Pacific Northwest	2,484	-1.1	152,393	0.2
Pacific Southwest	5,521	-8.7	284,694	0.7
Total United States	80,570	4.2	3,998,579	-1.1

WEEKLY ELECTRIC OUTPUT IN PREVIOUS WEEKS--GWh

Week Ended	2016	Week Ended	2015	% Inc. (16/15)	52 Weeks Ended	2016	% Inc. (16/15)
Aug 27	86,862	Aug 29	83,468	4.1	Aug 27	3,997,375	-0.9
Sep 03	84,357	Sep 05	86,817	-2.8	Sep 03	3,994,915	-1.0
Sep 10	85,369	Sep 12	84,944	0.5	Sep 10	3,995,340	-1.1
Sep 17	80,570	Sep 19	77,331	4.2	Sep 17	3,998,579	-1.1
Sep 17	2,998,516	Sep 19	3,019,325	-0.7	YEAR TO DATE, FIRST 38 WEEKS		

WEEKLY ELECTRIC OUTPUT INDEX--TOTAL U.S.*

SEASONALLY ADJUSTED 1982 = 100

Week Ended	2016	Week Ended	2015	Week Ended	2014
Aug 27	178	Aug 29	201	Aug 30	179
Sep 03	180	Sep 05	217	Sep 06	185
Sep 10	195	Sep 12	200	Sep 13	177
Sep 17	191	Sep 19	179	Sep 20	169

* Excludes Alaska and Hawaii.

+ Includes investor-owned companies, cooperatives and government-owned utilities.

Copyright © 2016 Edison Electric Institute. All rights reserved.

EI WEEKLY ELECTRIC OUTPUT BY GEOGRAPHIC DIVISION
(48 CONTIGUOUS STATES)

	Week Ended			NMA CUMULATIVE JANUARY WEEK ONE TO			52 Weeks Ended		
	17-Sep 2016 GWh Output	19-Sep 2015 GWh Output	% Increase Over Corresponding Week of 2015	17-Sep 2016 GWh Output	19-Sep 2015 GWh Output	% Increase Over Corresponding Week of 2015	17-Sep 2016 GWh Output	19-Sep 2015 GWh Output	% Increase Over Corresponding Week of 2015
New England	2,348	2,476	-5.2%	92,388	95,850	-3.6%	123,431	128,398	-3.9%
Mid-Atlantic	8,633	8,468	1.9%	326,292	338,414	-3.6%	432,237	449,977	-3.9%
Central Industrial	12,851	12,579	2.2%	505,854	507,578	-0.3%	672,591	684,128	-1.7%
West Central	6,320	6,409	-1.4%	245,970	246,835	-0.4%	328,969	331,921	-0.9%
Southeast	21,318	18,372	16.0%	770,638	771,486	-0.1%	1,019,921	1,028,394	-0.8%
South Central	15,800	14,941	5.7%	535,267	538,114	-0.5%	706,379	709,365	-0.4%
Rocky Mountain	5,295	5,529	-4.2%	202,709	201,564	0.6%	277,963	275,341	1.0%
Pacific Northwest	2,484	2,512	-1.1%	109,862	109,618	0.2%	152,393	152,022	0.2%
Pacific Southwest	5,521	6,045	-8.7%	209,536	209,868	-0.2%	284,694	282,728	0.7%
Total United States ^{1/}	80,570	77,331	4.2%	2,998,516	3,019,327	-0.7%	3,998,578	4,042,274	-1.1%
Coal Regions Only ^{2/}	70,217	66,298	5.9%	2,586,730	2,603,991	-0.7%	3,438,060	3,479,126	-1.2%

Notes: EEl output data are an estimate of electricity load made available for distribution derived as weekly net generation + purchases from non-utilities + net imports - exports - sales for resale. It is not meant to be a measure of electricity generation for the U.S. EEl survey data represent the majority of national distribution (large utilities, large government power projects, some independent and large municipal power projects). The remaining segment of the industry (smaller producers) is estimated. Non-utility generation is captured via direct sales to utilities.

^{1/} Excludes Alaska and Hawaii

^{2/} Excludes New England and Pacific regions

SOURCE: Edison Electric Institute (EEl), *Weekly Electric Output Report*.

AMERICAN IRON AND STEEL INSTITUTE
 25 Massachusetts Avenue, NW, Suite 800
 Washington, D.C. 20001

September 19, 2016

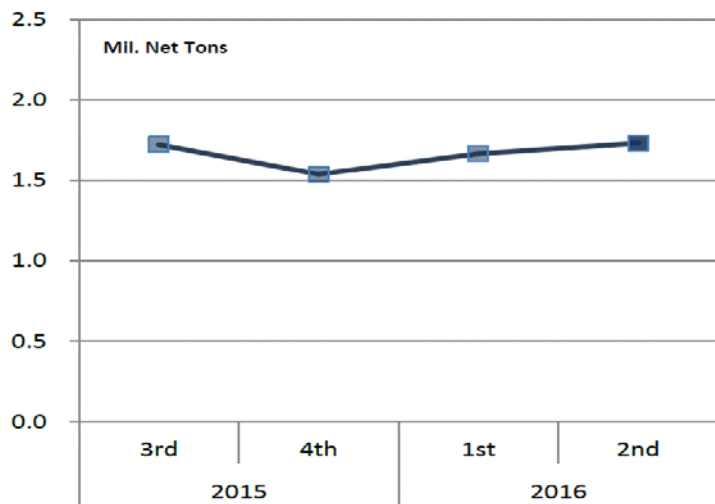
ESTIMATED WEEKLY RAW STEEL * PRODUCTION

<u>Period</u>	<u>Thousand Net Tons</u>	<u>Percent Change from Previous Period</u>	<u>Percent Capability Utilization**</u>	<u>Production by District</u>		
				<u>Week Ending</u>		
				<u>Sep. 17</u>	<u>Sep. 10</u>	
<u>Week Ending</u>				North East	210	202
				Great Lakes	639	653
September 17, 2016	1,632	0.4	69.8	Midwest	157	158
September 17, 2015	1,687	-3.3	70.5	Southern	556	544
September 10, 2016	1,626	-1.8	69.5	Western	70	69
				Total	1,632	1,626
<u>Year-to-Date +</u>						
September 17, 2016	64,177	-1.4	72.2			
September 17, 2015	65,061	-	72.1			

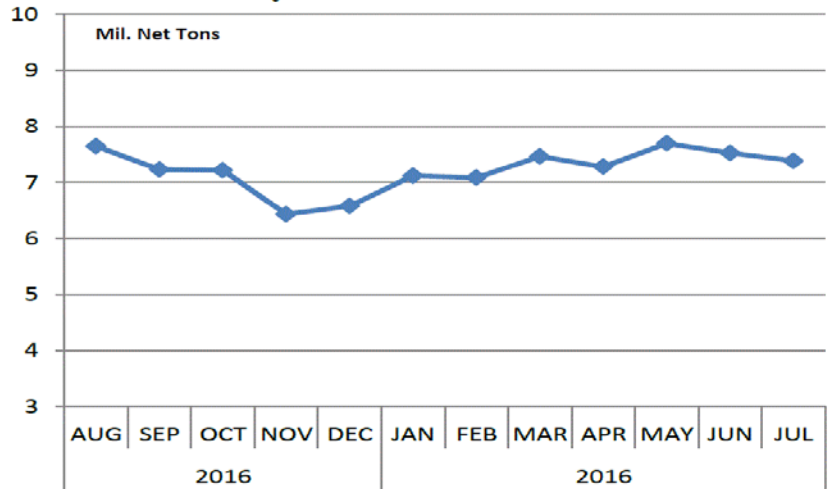
*Raw steel production tonnage included in this report is estimated based on a sampling of steel producers (50% of domestic producers). Therefore, this report should be used primarily to assess production trends. The AISI production report "AIS 7," produced monthly and available by subscription, provides a more accurate summary of steel production based on data supplied by companies representing approximately 75% of U.S. production capacity plus includes revisions for previous months.

NOTE: Capability for the third quarter 2016 is approximately 30.7 million net tons vs. 31.4 million net tons for the same period last year, and 30.4 million tons for the second quarter of 2016.

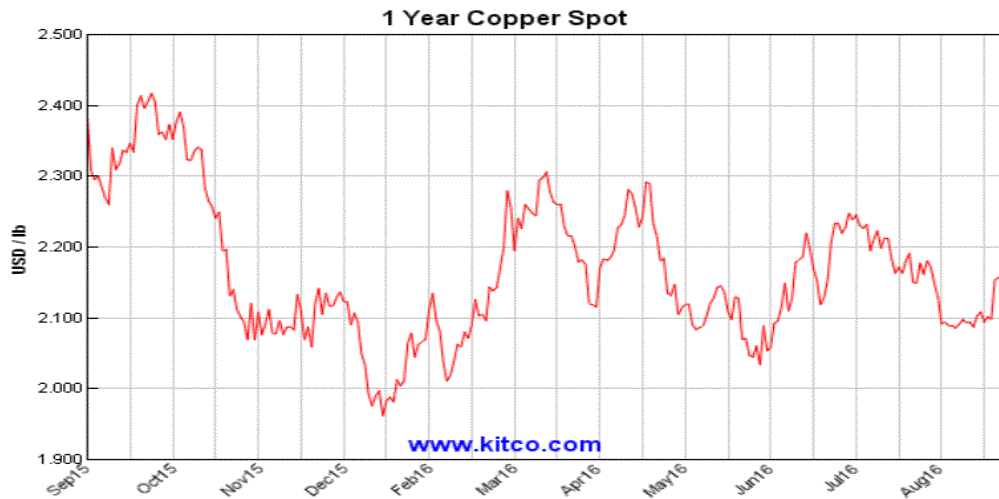
Average Weekly Raw Steel Production



Monthly Raw Steel Production



*Steel in the first solid state after melting suitable for further processing or sale, including ingots, steel for castings and strand or pressure cast blooms, slabs or other product forms. ** Based on tonnage capability to produce raw steel for a sustained full order book.



Source: Kitco website - www.kitco.com/connecting.html

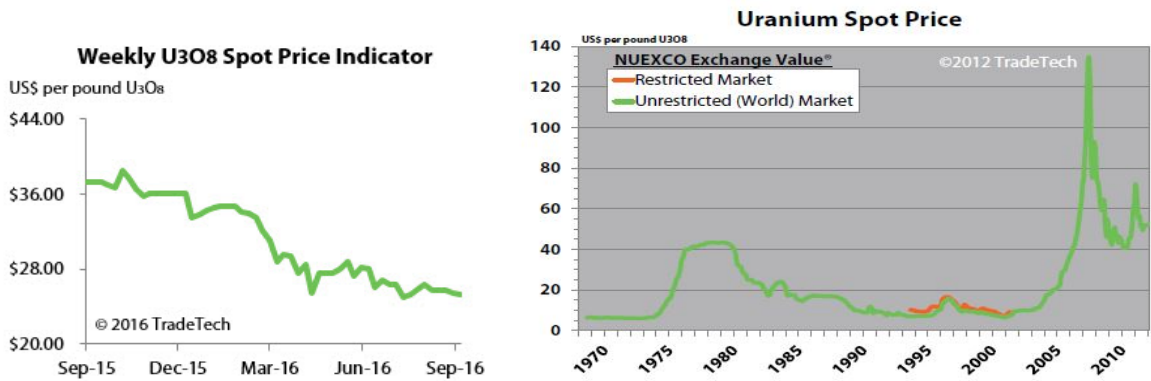


Source: Kitco website - www.kitco.com/connecting.html

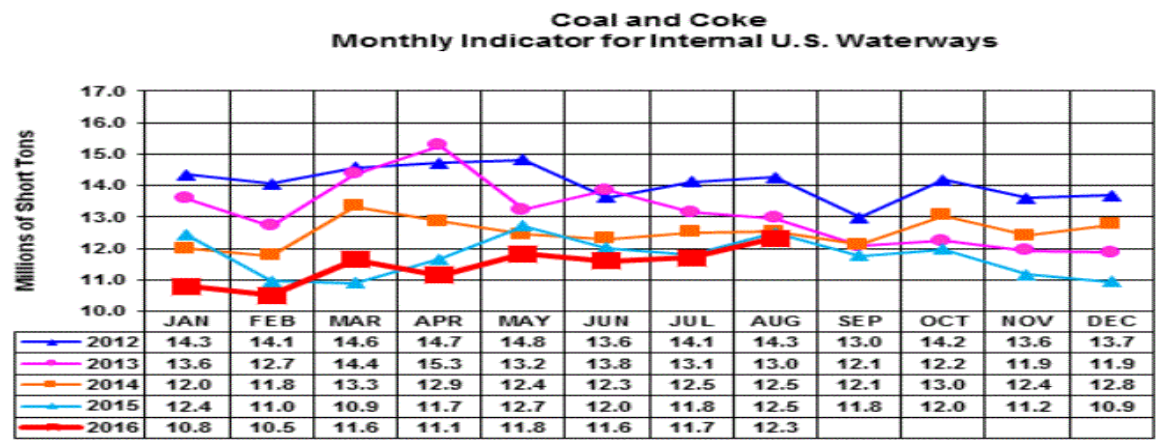


Source: Kitco website - www.kitco.com/connecting.html

Trade Tech's Uranium Price Indicators

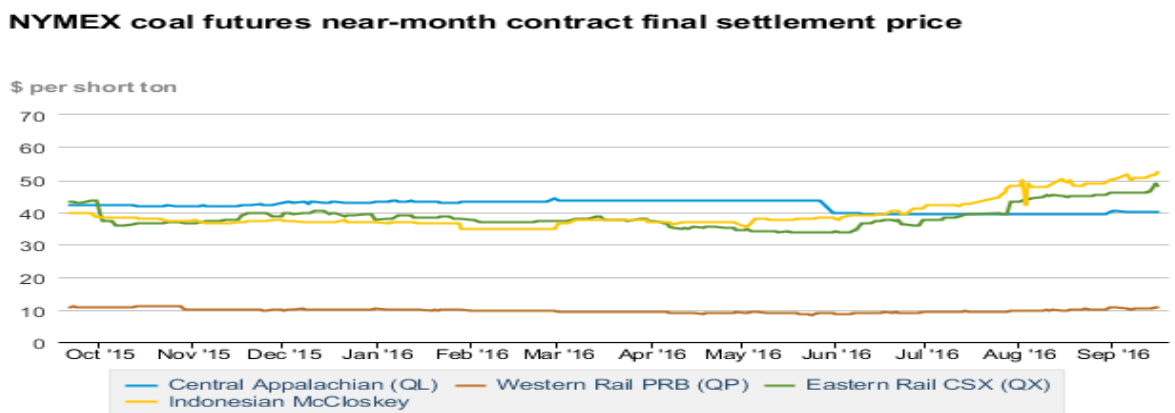


Source: Trade Tech, Uranium Info Website – www.uranium.info



Source: U.S. Army Corps of Engineers, Waterborne Commerce Statistics Center

NYMEX Coal Futures Near-month Contract Final Settlement Price



Source: The New York Mercantile Exchange (NYMEX), Daily Energy Bulletin.

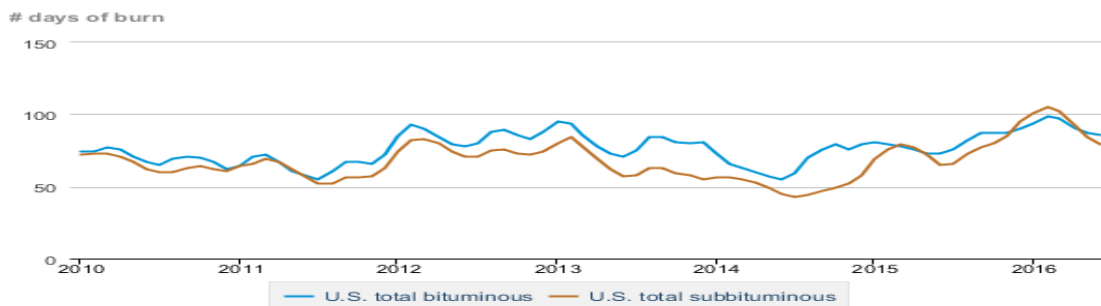
Source: Energy Information Administration, based on NYMEX and Daily Energy Bulletin data

Average weekly coal commodity spot prices *dollars per short ton*

	Week ending					Week ago
	08/19/16	08/26/16	09/02/16	09/09/16	09/16/16	change
Central Appalachia <i>12,500 Btu, 1.2 SO₂</i>	\$41.10	\$41.10	\$41.10	\$41.10	\$40.20	\$-0.90
Northern Appalachia <i>13,000 Btu, < 3.0 SO₂</i>	\$42.35	\$42.35	\$42.35	\$42.35	\$41.45	\$-0.90
Illinois Basin <i>11,800 Btu, 5.0 SO₂</i>	\$32.00	\$32.00	\$32.00	\$32.00	\$32.00	\$0.00
Powder River Basin <i>8,800 Btu, 0.8 SO₂</i>	\$8.70	\$8.70	\$8.70	\$8.70	\$8.25	\$-0.45
Uinta Basin <i>11,700 Btu, 0.8 SO₂</i>	\$39.40	\$39.40	\$39.40	\$39.40	\$39.40	\$0.00

Source: Energy Information Administration (with permission from SNL), *Coal News and Markets Report*

Days of burn by non-lignite coal rank, January 2009 - June 2016



 Source: U.S. Energy Information Administration

Source: Energy Information Administration, *Electricity Monthly Update Report*

Temperature -- heating & cooling degree days (week ending Sep 08)

Region	HDD Current	HDD deviation from:		CDD Current	CDD deviation from:	
		normal	last year		normal	last year
New England	1	-12	-1	37	26	-14
Middle Atlantic	1	-7	1	49	25	-24
E N Central	3	-10	2	55	32	-24
W N Central	4	-14	1	51	18	-29
South Atlantic	0	-1	0	91	18	-6
E S Central	0	-1	0	92	27	-5
W S Central	0	-1	0	116	17	-11
Mountain	6	-16	-4	59	9	6
Pacific	5	-3	-2	26	-10	-16
United States	2	-7	0	64	17	-15

Note: HDD = heating degree-day; CDD = cooling degree-day

Source: National Oceanic and Atmospheric Administration


Source: Energy Information Administration

USGS Production of Selected Mineral Commodities	2016 Year to Date - 2nd Quarter	2015 Year to Date - 2nd Quarter	Percent Change
Aluminum, secondary (000 Mt.)	450.0	374.0	20%
Cement (Mil. Mt.)	38.9	36.6	6%
Copper (000 Mt.)	703.0	665.0	6%
Gold (Mt.)	103.0	97.7	5%
Gypsum (Mil. Mt.)	8.3	7.3	14%
Iron Ore (Mil. Mt.)	19.2	23.4	-18%
Lead (000 Mt.)	177.0	188.0	-6%
Molybdenum (000 Mt.)	17.7	27.3	-35%
Phosphate rock (Mil. Mt.)	12.7	13.8	-8%
Sand & gravel, construction (Mil. Mt.)	443.0	410.0	8%
Silver (Mt.)	567.0	551.0	3%
Soda ash (Mil. Mt.)	5.8	5.8	0%
Stone, crushed (Mil. Mt.)	648.0	582.0	11%
Zinc (000 Mt.)	404.0	417.0	-3%

Source: U.S. Geological Survey, Mineral Industry Surveys. Percent change based on USGS rounded numbers. 2016 data are preliminary estimates.

Natural gas spot prices (Henry Hub)



 Source: Natural Gas Intelligence

Source: Energy Information Administration, *Natural Gas Weekly Update*

EIA Coal Stocks and Average Number of Days of Burn (Power Sector)

Coal stocks and average number of days of burn for non-lignite coal by region (electric power sector)

Zone	Coal	June 2016		June 2015		% Change of Stocks	May 2016		% Change of Stocks
		Stocks (1000 tons)	Days of Burn	Stocks (1000 tons)	Days of Burn		Stocks (1000 tons)	Days of Burn	
Northeast	Bituminous	7,043	119	6,937	99	1.5%	7,439	115	-5.3%
	Subbituminous	171	157	806	229	-78.8%	171	184	0.0%
South	Bituminous	35,292	82	33,382	71	5.7%	37,894	84	-6.9%
	Subbituminous	7,180	74	6,457	68	11.2%	7,959	82	-9.8%
Midwest	Bituminous	18,434	91	15,778	73	16.8%	18,853	92	-2.2%
	Subbituminous	45,364	76	38,839	58	16.8%	47,382	80	-4.3%
West	Bituminous	5,862	75	5,583	69	5.0%	5,861	76	0.0%
	Subbituminous	36,200	83	32,908	74	10.0%	39,169	90	-7.6%
U.S. Total	Bituminous	66,631	86	61,680	73	8.0%	70,047	87	-4.9%
	Subbituminous	88,915	79	79,011	65	12.5%	94,681	84	-6.1%

Source: Energy Information Administration, *Electricity Monthly Update*

EIA Working Natural Gas Underground Storage

Working gas in underground storage

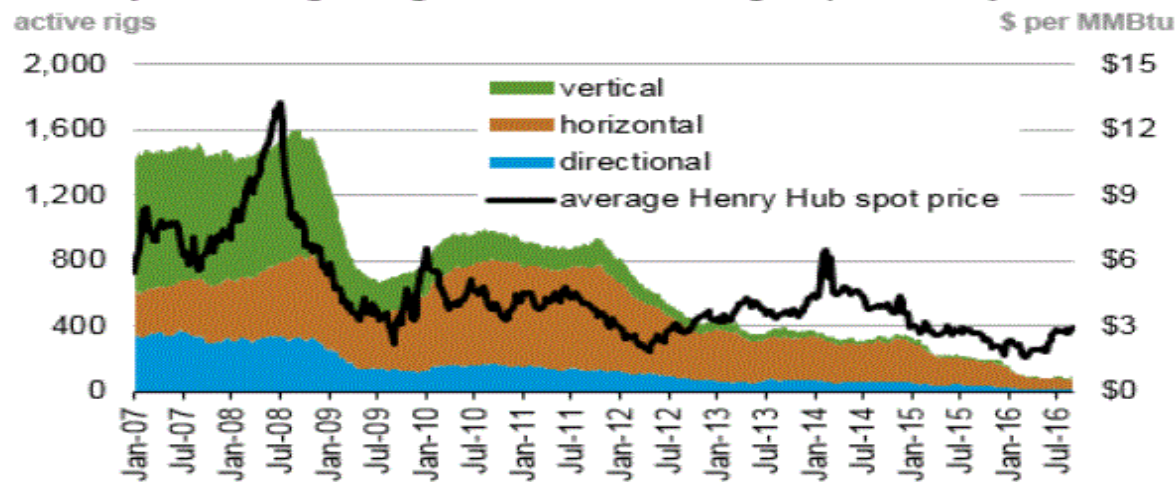
Region	Stocks billion cubic feet (Bcf)		
	2016-09-09	2016-09-02	change
East	832	812	20
Midwest	954	928	26
Mountain	227	224	3
Pacific	317	313	4
South Central	1,169	1,160	9
Total	3,499	3,437	62

Source: U.S. Energy Information Administration

Source: Energy Information Administration, *Natural Gas Weekly Update*

EIA Natural Gas Rig Count and Price Trend

Weekly natural gas rig count and average spot Henry Hub



eia Source: Baker Hughes

Source: Energy Information Administration, *Natural Gas Weekly Update*

EIA Oil and Natural Gas Rig Productivity

Region	New-well oil production per rig barrels/day			New-well gas production per rig thousand cubic feet/day		
	September 2016	October 2016	change	September 2016	October 2016	change
Bakken	875	896	21	1,189	1,228	39
Eagle Ford	1,153	1,170	17	3,335	3,382	47
Haynesville	31	31	-	5,723	5,803	80
Marcellus	69	69	-	11,583	11,733	150
Niobrara	982	1,004	22	3,097	3,172	75
Permian	539	543	4	902	909	7
Utica	353	361	8	7,849	7,951	102
Rig-weighted average	595	605	10	2,804	2,715	(89)

Source: Energy Information Administration, *Drilling Productivity Report*