

---

National Mining Association

# Weekly Statistical Summary

September 30, 2016 Edition  
(Data for Week Ending August 24, 2016)

Prepared by  
National Mining Association



Suite 500 East, 101 Constitution Avenue, NW  
Washington, DC, 20001  
Phone (202) 463-2600  
Visit us at <http://www.nma.org>

# NMA Weekly Statistical Summary

Vol. 54, No. 39  
Dated 09/30/16

## PRODUCTION, CONSUMPTION & TRADE

	Week Ended			* Cumulative Jan 1 to		
	09/24/16	09/26/15	% Chng	09/24/16	09/24/15	% Chng
<b>EIA Coal Production (000 Tons):</b>						
Week Ended/Year to Date	15,726	17,833	-11.8%	523,758	674,479	-22.3%
52 Weeks Ended	741,264	940,816	-21.2%			
AAR Coal Rail Cars Loaded:	87,486	101,561	-13.9%	2,879,060	3,871,488	-25.6%
Coal Production	<b>Aug 16/15</b>		<b>% Chng</b>	<b>Jan - Aug 16/15</b>		<b>% Chng</b>
Month Ended - August	71,258	82,682	-13.8%	455,160	611,962	-25.6%

## DOC Bituminous Coal Trade (000 Tons)

Exports:	July 16/15			Jan - July 16/15		
			% Chng			% Chng
Metallurgical	2,425	2,933	-17.3%	22,640	29,179	-22.4%
Steam *	844	2,178	-61.2%	8,707	17,456	-50.1%
Lignite	6	5	20.0%	40	36	11.1%
Anthracite	5	5	0.0%	293	215	36.3%
<b>Total</b>	<b>3,280</b>	<b>5,121</b>	<b>-36.0%</b>	<b>31,680</b>	<b>46,886</b>	<b>-32.4%</b>
Imports:	990	1,091	-9.3%	5,979	6,740	-11.3%

	Week Ended			Cumulative Jan 1 to		
	09/24/16	09/26/15	% Chng	09/24/16	09/26/15	% Chng
EI Electric Total Output (Mil. Kwh)	81,953	75,907	8.0%	3,080,469	3,095,231	-0.5%
EI Coal Region Output (Mil. Kwh)	71,130	64,684	10.0%	2,657,860	2,668,675	-0.4%
AISI Raw Steel Output (000 Tons)	1,605	1,687	-4.9%	65,782	66,748	-1.4%

## EIA (SNL ENERGY) AVERAGE COAL SPOT PRICES Dollars Per Short Ton

Average Coal Spot Prices (\$/Short Ton)	Week Ending			Natural Gas Spot Prices (\$/MMBtu)	
	09/23/16	09/16/16	% Chng	Wed.	09/21/16
Central App, 12,500 Btu, 1.2 SO <sub>2</sub>	\$40.20	\$40.20	0.0%	Henry Hub	3.14
Northern App, 13,000 Btu, < 3.0 SO <sub>2</sub>	41.45	41.45	0.0%	New York	1.50
Illinois Basin, 11,800, 5.0 SO <sub>2</sub>	32.00	32.00	0.0%	Chicago	3.09
Powder River Basin, 8,800 Btu 0.8 SO <sub>2</sub>	8.25	8.25	0.0%	Cal.Comp.Avg.	3.18
Uinta Basin, 11,700 Btu, 0.8 SO <sub>2</sub>	39.40	39.40	0.0%		

Coal exports and Imports are "as reported" (not revised); \*Steam excludes lignite & anthracite. All data in this report are preliminary and subject to revision.

Sources: Energy Information Administration; Edison Electric Institute; American Iron & Steel Institute; Association of American Railroads; Dept. of Commerce; SNL Energy; NGI's Daily Gas Price Index



## EIA Estimated Weekly U.S. Coal Production Overview

Coal-Producing Region & State (thousand short tons)	Week Ended			Year to Date			52 Weeks Ended		
	9/24/2016 (week 39)	9/17/2016 (week 38)	9/26/2015 (week 39)	9/24/2016	9/24/2015	% Change	9/24/2016	9/26/2015	% Change
Alabama	187	178	245	6,854	10,626	-35.5	9,351	14,847	-37.0
Alaska	23	21	19	809	849	-4.7	1,132	1,190	-4.9
Arizona	111	113	133	3,900	5,315	-26.6	5,352	7,490	-28.5
Arkansas	1	2	2	45	72	-38.1	63	109	-42.2
Colorado	268	289	397	8,814	15,281	-42.3	12,300	21,233	-42.1
Illinois	927	918	1,053	33,513	43,350	-22.7	46,095	59,503	-22.5
Indiana	592	594	677	21,224	26,452	-19.8	28,878	36,879	-21.7
Kansas	3	5	3	77	142	-45.7	134	193	-30.6
<b>Kentucky Total</b>	<b>971</b>	<b>992</b>	<b>1,188</b>	<b>32,971</b>	<b>47,469</b>	<b>-30.5</b>	<b>46,584</b>	<b>66,615</b>	<b>-30.1</b>
Eastern (KY)	411	423	533	13,562	21,877	-38.0	19,626	30,835	-36.4
Western (KY)	560	569	655	19,409	25,592	-24.2	26,958	35,780	-24.7
Louisiana	71	78	92	2,226	2,594	-14.2	3,046	3,765	-19.1
Maryland	30	31	33	1,072	1,459	-26.5	1,518	1,966	-22.8
Mississippi	61	63	70	2,078	2,463	-15.6	2,739	3,244	-15.6
Missouri	3	2	3	133	120	11.3	151	191	-20.9
Montana	696	753	874	22,455	31,572	-28.9	32,502	44,959	-27.7
New Mexico	396	448	422	12,001	14,404	-16.7	17,157	19,560	-12.3
North Dakota	589	598	572	20,713	21,358	-3.0	27,996	29,210	-4.2
Ohio	291	283	330	10,498	13,061	-19.6	14,386	18,284	-21.3
Oklahoma	14	14	14	499	587	-15.1	688	805	-14.5
<b>Pennsylvania Total</b>	<b>931</b>	<b>934</b>	<b>1,093</b>	<b>32,456</b>	<b>39,209</b>	<b>-17.2</b>	<b>44,110</b>	<b>55,340</b>	<b>-20.3</b>
Anthracite (PA)	45	48	45	1,408	1,559	-9.7	1,977	2,109	-6.3
Bituminous (PA)	887	886	1,048	31,048	37,650	-17.5	42,133	53,231	-20.8
Tennessee	18	19	19	597	667	-10.5	822	923	-10.9
Texas	852	793	822	28,081	25,773	9.0	37,996	37,398	1.6
Utah	282	264	286	10,121	10,750	-5.9	13,710	15,423	-11.1
Virginia	266	252	256	9,534	10,552	-9.6	12,997	14,388	-9.7
<b>West Virginia Total</b>	<b>1,620</b>	<b>1,547</b>	<b>1,755</b>	<b>56,991</b>	<b>72,675</b>	<b>-21.6</b>	<b>79,457</b>	<b>100,544</b>	<b>-21.0</b>
Northern (WV)	884	850	859	30,663	35,063	-12.5	43,145	47,950	-10.0
Southern (WV)	736	697	897	26,328	37,613	-30.0	36,312	52,595	-31.0
Wyoming	6,521	6,913	7,477	206,098	277,677	-25.8	302,100	386,755	-21.9
<b>Appalachian Total</b>	<b>3,754</b>	<b>3,668</b>	<b>4,263</b>	<b>131,564</b>	<b>170,127</b>	<b>-22.7</b>	<b>182,268</b>	<b>237,129</b>	<b>-23.1</b>
<b>Interior Total</b>	<b>3,085</b>	<b>3,037</b>	<b>3,391</b>	<b>107,285</b>	<b>127,144</b>	<b>-15.6</b>	<b>146,747</b>	<b>177,868</b>	<b>-17.5</b>
<b>Western Total</b>	<b>8,887</b>	<b>9,398</b>	<b>10,179</b>	<b>284,910</b>	<b>377,208</b>	<b>-24.5</b>	<b>412,249</b>	<b>525,820</b>	<b>-21.6</b>
<b>East of Mississippi River</b>	<b>5,895</b>	<b>5,813</b>	<b>6,717</b>	<b>207,787</b>	<b>267,983</b>	<b>-22.5</b>	<b>286,938</b>	<b>372,535</b>	<b>-23.0</b>
<b>West of Mississippi River</b>	<b>9,831</b>	<b>10,291</b>	<b>11,116</b>	<b>315,971</b>	<b>406,495</b>	<b>-22.3</b>	<b>454,326</b>	<b>568,282</b>	<b>-20.1</b>
Bituminous and Lignite	15,681	16,056	17,787	522,351	672,919	-22.4	739,287	938,707	-21.2
Anthracite	45	48	45	1,408	1,559	-9.7	1,977	2,109	-6.3
<b>U.S. Total</b>	<b>15,726</b>	<b>16,103</b>	<b>17,833</b>	<b>523,758</b>	<b>674,479</b>	<b>-22.3</b>	<b>741,264</b>	<b>940,816</b>	<b>-21.2</b>
Railroad Cars Loaded	87,486	90,369	101,561	2,879,060	3,871,488	-25.6	4,132,976	5,429,731	-23.9

Source: Energy Information Administration

EEI Prepared by EEI's Business Information Group

# WEEKLY ELECTRIC OUTPUT

Volume 84 No. 39

**OUTPUT FOR WEEK ENDED - Sep 24, 2016**

Sep 28, 2016

The net available amount of electric energy distributed by the Total Electric Utility Industry+ for the week ended Saturday, **Sep 24, 2016** was **81,953** gigawatthours (GWh), according to the Edison Electric Institute. This is equivalent to **197** on the weekly electric output index.

**WEEKLY ELECTRIC OUTPUT BY GEOGRAPHIC DIVISION**

(48 CONTIGUOUS STATES)

	Week Ended September 24		52 Weeks Ended September 24	
	GWh Output	% Increase Over Corresponding Week of 2015	GWh Output	% Increase Over Corresponding Period of 2015
New England	2,432	10.4	123,661	-3.7
Mid-Atlantic	8,679	13.4	433,262	-3.7
Central Industrial	13,355	11.4	673,963	-1.5
West Central	6,650	6.7	329,387	-0.8
Southeast	20,749	12.4	1,022,208	-0.7
South Central	16,326	12.4	708,180	-0.3
Rocky Mountain	5,371	-7.8	277,506	0.7
Pacific Northwest	2,529	-1.3	152,360	0.2
Pacific Southwest	5,862	-9.2	284,098	0.3
Total United States	81,953	8.0	4,004,625	-1.0

**WEEKLY ELECTRIC OUTPUT IN PREVIOUS WEEKS--GWh**

Week Ended	2016	Week Ended	2015	% Inc. (16/15)	52 Weeks Ended	2016	% Inc. (16/15)
Sep 03	84,357	Sep 05	86,817	-2.8	Sep 03	3,994,915	-1.0
Sep 10	85,369	Sep 12	84,944	0.5	Sep 10	3,995,340	-1.1
Sep 17	80,570	Sep 19	77,331	4.2	Sep 17	3,998,579	-1.1
Sep 24	81,953	Sep 26	75,907	8.0	Sep 24	4,004,625	-1.0
Sep 24	3,080,469	Sep 26	3,095,231	-0.5	YEAR TO DATE, FIRST 39 WEEKS		

**WEEKLY ELECTRIC OUTPUT INDEX--TOTAL U.S.\***

SEASONALLY ADJUSTED 1982 = 100

Week Ended	2016	Week Ended	2015	Week Ended	2014
Sep 03	180	Sep 05	217	Sep 06	185
Sep 10	195	Sep 12	200	Sep 13	177
Sep 17	191	Sep 19	179	Sep 20	169
Sep 24	197	Sep 26	178	Sep 27	168

\* Excludes Alaska and Hawaii.

+ Includes investor-owned companies, cooperatives and government-owned utilities.

Copyright © 2016 Edison Electric Institute. All rights reserved.

**EEl WEEKLY ELECTRIC OUTPUT BY GEOGRAPHIC DIVISION**  
**(48 CONTIGUOUS STATES)**

	Week Ended			NMA CUMULATIVE JANUARY WEEK ONE TO			52 Weeks Ended		
	24-Sep	26-Sep	% Increase Over Corresponding Week of 2015	24-Sep	26-Sep	% Increase Over Corresponding Week of 2015	24-Sep	26-Sep	% Increase Over Corresponding Week of 2015
	2016	2015		2016	2015		2016	2015	
	GWh	GWh		GWh	GWh		GWh	GWh	
	Output	Output		Output	Output		Output	Output	
<b>New England</b>	2,432	2,202	10.4%	<b>94,820</b>	<b>98,052</b>	<b>-3.3%</b>	123,661	128,363	-3.7%
<b>Mid-Atlantic</b>	8,679	7,653	13.4%	<b>334,971</b>	<b>346,067</b>	<b>-3.2%</b>	433,262	450,017	-3.7%
<b>Central Industrial</b>	13,355	11,983	11.4%	<b>519,209</b>	<b>519,561</b>	<b>-0.1%</b>	673,963	684,493	-1.5%
<b>West Central</b>	6,650	6,233	6.7%	<b>252,620</b>	<b>253,068</b>	<b>-0.2%</b>	329,387	332,192	-0.8%
<b>Southeast</b>	20,749	18,462	12.4%	<b>791,387</b>	<b>789,948</b>	<b>0.2%</b>	1,022,208	1,029,128	-0.7%
<b>South Central</b>	16,326	14,525	12.4%	<b>551,593</b>	<b>552,639</b>	<b>-0.2%</b>	708,180	710,533	-0.3%
<b>Rocky Mountain</b>	5,371	5,828	-7.8%	<b>208,080</b>	<b>207,392</b>	<b>0.3%</b>	277,506	275,498	0.7%
<b>Pacific Northwest</b>	2,529	2,563	-1.3%	<b>112,391</b>	<b>112,181</b>	<b>0.2%</b>	152,360	152,035	0.2%
<b>Pacific Southwest</b>	5,862	6,458	-9.2%	<b>215,398</b>	<b>216,326</b>	<b>-0.4%</b>	284,098	283,337	0.3%
<b>Total United States <sup>1/</sup></b>	<u>81,953</u>	<u>75,907</u>	8.0%	<u><b>3,080,469</b></u>	<u><b>3,095,234</b></u>	<b>-0.5%</b>	4,004,625	4,045,596	-1.0%
<b>Coal Regions Only <sup>2/</sup></b>	71,130	64,684	10.0%	<b>2,657,860</b>	<b>2,668,675</b>	<b>-0.4%</b>	3,444,506	3,481,861	-1.1%

Notes: EEI output data are an estimate of electricity load made available for distribution derived as weekly net generation + purchases from non-utilities + net imports - exports - sales for resale. It is not meant to be a measure of electricity generation for the U.S. EEI survey data represent the majority of national distribution (large utilities, large government power projects, some independent and large municipal power projects). The remaining segment of the industry (smaller producers) is estimated. Non-utility generation is captured via direct sales to utilities.

<sup>1/</sup> Excludes Alaska and Hawaii

<sup>2/</sup> Excludes New England and Pacific regions

SOURCE: Edison Electric Institute (EEI), *Weekly Electric Output Report*.

AMERICAN IRON AND STEEL INSTITUTE  
 25 Massachusetts Avenue, NW, Suite 800  
 Washington, D.C. 20001

September 26, 2016

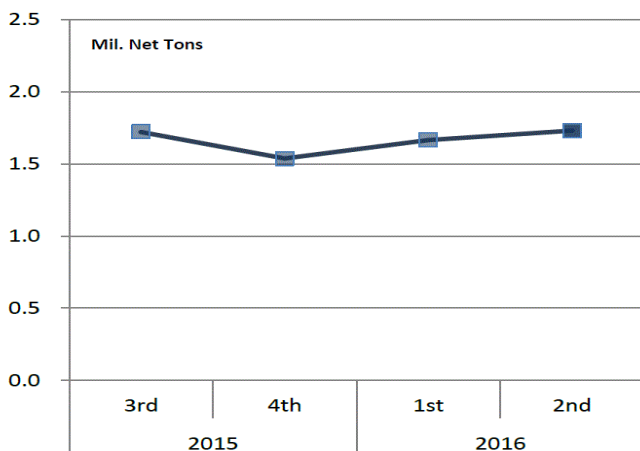
**ESTIMATED WEEKLY RAW STEEL \* PRODUCTION**

<u>Period</u>	<u>Thousand Net Tons</u>	<u>Percent Change from Previous Period</u>	<u>Percent Capability Utilization**</u>	<u>Production by District</u>		
				<u>Week Ending Sep. 24</u>	<u>Week Ending Sep. 17</u>	
<b><u>Week Ending</u></b>				North East	201	210
				Great Lakes	636	639
September 24, 2016	1,605	-1.7	68.6	Midwest	162	157
September 24, 2015	1,687	-4.9	70.5	Southern	541	556
September 17, 2016	1,632	0.4	69.8	Western	65	70
				<b>Total</b>	<b>1,605</b>	<b>1,632</b>
<b><u>Year-to-Date +</u></b>						
September 24, 2016	65,782	-1.4	72.1			
September 24, 2015	66,748	-	72.1			

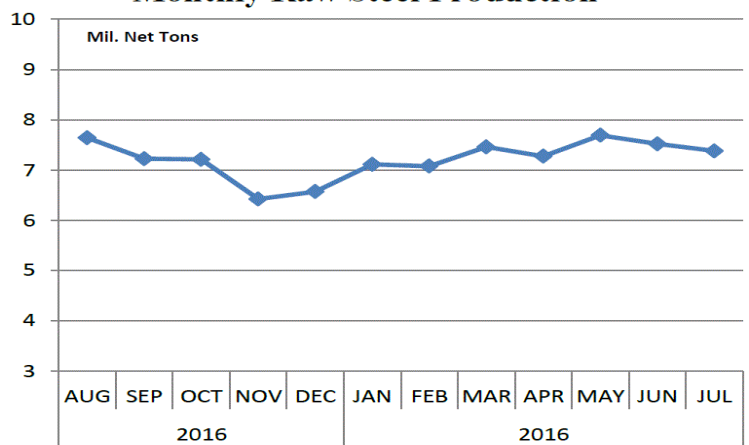
\*Raw steel production tonnage included in this report is estimated based on a sampling of steel producers (50% of domestic producers). Therefore, this report should be used primarily to assess production trends. The AISI production report "AIS 7," produced monthly and available by subscription, provides a more accurate summary of steel production based on data supplied by companies representing approximately 75% of U.S. production capacity plus includes revisions for previous months.

NOTE: Capacity for the third quarter 2016 is approximately 30.7 million net tons vs. 31.4 million net tons for the same period last year, and 30.4 million tons for the second quarter of 2016.

**Average Weekly Raw Steel Production**



**Monthly Raw Steel Production**



\*Steel in the first solid state after melting suitable for further processing or sale, including ingots, steel for castings and strand or pressure cast blooms, slabs or other product forms. \*\* Based on tonnage capability to produce raw steel for a sustained full order book.



Source: Kitco website - [www.kitco.com/connecting.html](http://www.kitco.com/connecting.html)

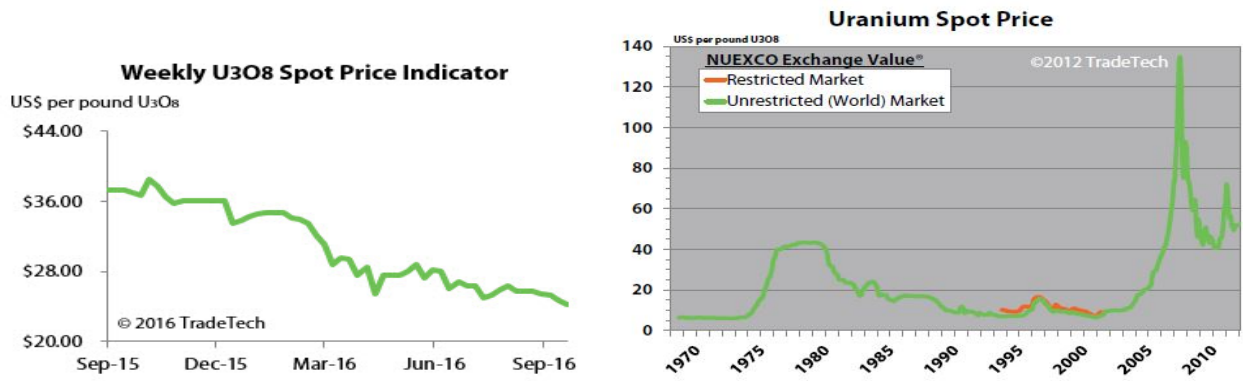


Source: Kitco website - [www.kitco.com/connecting.html](http://www.kitco.com/connecting.html)

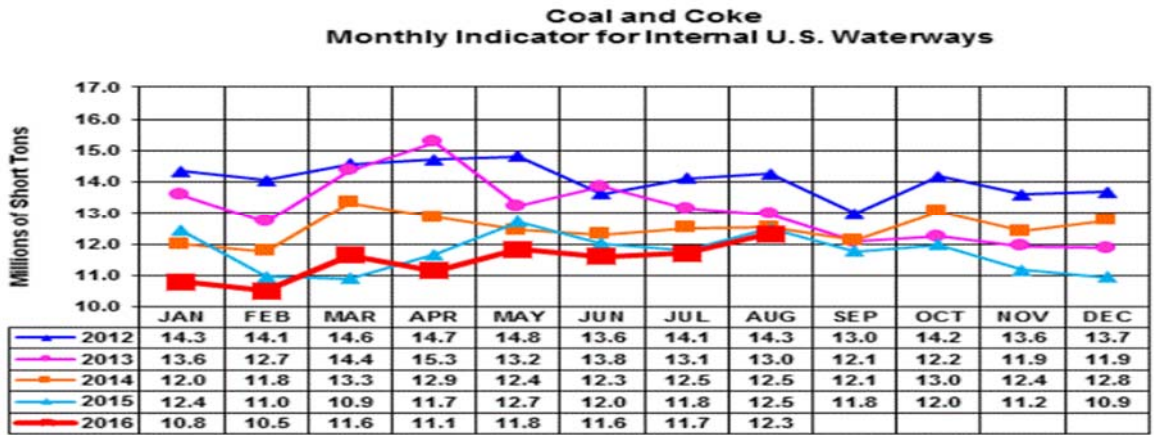


Source: Kitco website - [www.kitco.com/connecting.html](http://www.kitco.com/connecting.html)

### Trade Tech's Uranium Price Indicators



Source: Trade Tech, Uranium Info Website – [www.uranium.info](http://www.uranium.info)



Source: U.S. Army Corps of Engineers, Waterborne Commerce Statistics Center

### NYMEX Coal Futures Near-month Contract Final Settlement Price



Source: The New York Mercantile Exchange (NYMEX), Daily Energy Bulletin.

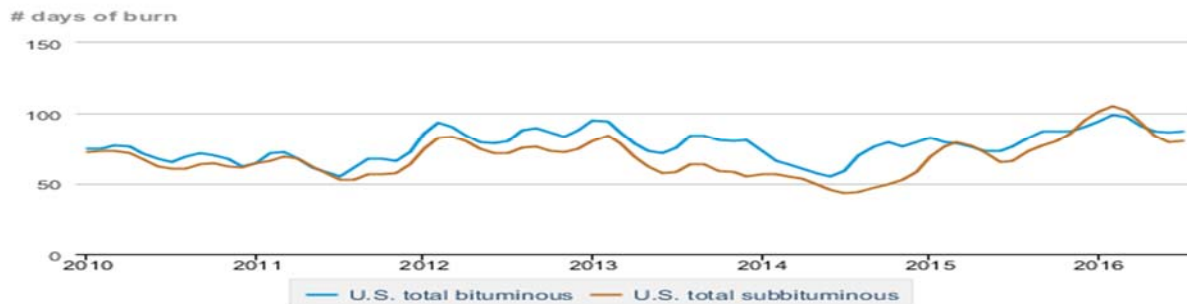
Source: Energy Information Administration, based on NYMEX and Daily Energy Bulletin data

### Average weekly coal commodity spot prices dollars per short ton

	Week ending					Week ago
	08/26/16	09/02/16	09/09/16	09/16/16	09/23/16	change
Central Appalachia 12,500 Btu, 1.2 SO <sub>2</sub>	\$41.10	\$41.10	\$41.10	\$40.20	\$40.20	\$0.00
Northern Appalachia 13,000 Btu, < 3.0 SO <sub>2</sub>	\$42.35	\$42.35	\$42.35	\$41.45	\$41.45	\$0.00
Illinois Basin 11,800 Btu, 5.0 SO <sub>2</sub>	\$32.00	\$32.00	\$32.00	\$32.00	\$32.00	\$0.00
Powder River Basin 8,800 Btu, 0.8 SO <sub>2</sub>	\$8.70	\$8.70	\$8.70	\$8.25	\$8.25	\$0.00
Uinta Basin 11,700 Btu, 0.8 SO <sub>2</sub>	\$39.40	\$39.40	\$39.40	\$39.40	\$39.40	\$0.00

Source: Energy Information Administration (with permission from SNL), *Coal News and Markets Report*

### Days of burn by non-lignite coal rank, January 2009 - July 2016



Source: U.S. Energy Information Administration

Source: Energy Information Administration, *Electricity Monthly Update Report*

### Temperature -- heating & cooling degree days (week ending Sep 22)

Region	HDD Current	HDD deviation from:		CDD Current	CDD deviation from:	
		normal	last year		normal	last year
New England	2	-35	-16	35	34	18
Middle Atlantic	1	-28	-11	38	29	22
E N Central	2	-30	-19	45	35	34
W N Central	7	-20	-14	47	32	21
South Atlantic	0	-9	-2	91	35	30
E S Central	0	-9	-3	89	46	41
W S Central	0	-2	-1	118	44	20
Mountain	15	-26	-7	44	9	4
Pacific	6	-7	0	39	11	-8
United States	3	-20	-9	62	30	20

Note: HDD = heating degree-day; CDD = cooling degree-day

Source: National Oceanic and Atmospheric Administration

Source: Energy Information Administration

USGS Production of Selected Mineral Commodities	2016 Year to Date - 2nd Quarter	2015 Year to Date - 2nd Quarter	Percent Change
Aluminum, secondary (000 Mt.)	450.0	374.0	20%
Cement (Mil. Mt.)	38.9	36.6	6%
Copper (000 Mt.)	703.0	665.0	6%
Gold (Mt.)	103.0	97.7	5%
Gypsum (Mil. Mt.)	8.3	7.3	14%
Iron Ore (Mil. Mt.)	19.2	23.4	-18%
Lead (000 Mt.)	177.0	188.0	-6%
Molybdenum (000 Mt.)	17.7	27.3	-35%
Phosphate rock (Mil. Mt.)	12.7	13.8	-8%
Sand & gravel, construction (Mil. Mt.)	443.0	410.0	8%
Silver (Mt.)	567.0	551.0	3%
Soda ash (Mil. Mt.)	5.8	5.8	0%
Stone, crushed (Mil. Mt.)	648.0	582.0	11%
Zinc (000 Mt.)	404.0	417.0	-3%

Source: U.S. Geological Survey, Mineral Industry Surveys. Percent change based on USGS rounded numbers. 2016 data are preliminary estimates.

### Natural gas spot prices (Henry Hub)



eia Source: Natural Gas Intelligence

Source: Energy Information Administration, *Natural Gas Weekly Update*

### EIA Coal Stocks and Average Number of Days of Burn (Power Sector)

Coal stocks and average number of days of burn for non-lignite coal by region (electric power sector)

Zone	Coal	July 2016		July 2015		% Change of Stocks	June 2016		% Change of Stocks
		Stocks (1000 tons)	Days of Burn	Stocks (1000 tons)	Days of Burn		Stocks (1000 tons)	Days of Burn	
Northeast	Bituminous	6,320	115	6,735	112	-6.2%	7,043	119	-10.3%
	Subbituminous	163	134	762	217	-78.6%	171	157	-4.7%
South	Bituminous	30,996	81	30,364	72	2.1%	35,292	82	-12.2%
	Subbituminous	6,510	69	5,865	63	11.0%	7,180	74	-9.3%
Midwest	Bituminous	17,322	92	14,802	75	17.0%	18,434	91	-6.0%
	Subbituminous	42,951	78	36,809	60	16.7%	45,364	76	-5.3%
West	Bituminous	5,689	75	5,364	68	6.1%	5,862	75	-2.9%
	Subbituminous	33,520	85	31,508	76	6.4%	36,200	83	-7.4%
U.S. Total	Bituminous	60,327	87	57,265	76	5.3%	66,631	86	-9.5%
	Subbituminous	83,144	80	74,945	66	10.9%	88,915	79	-6.5%

Source: U.S. Energy Information Administration

Source: Energy Information Administration, *Electricity Monthly Update*

### EIA Working Natural Gas Underground Storage

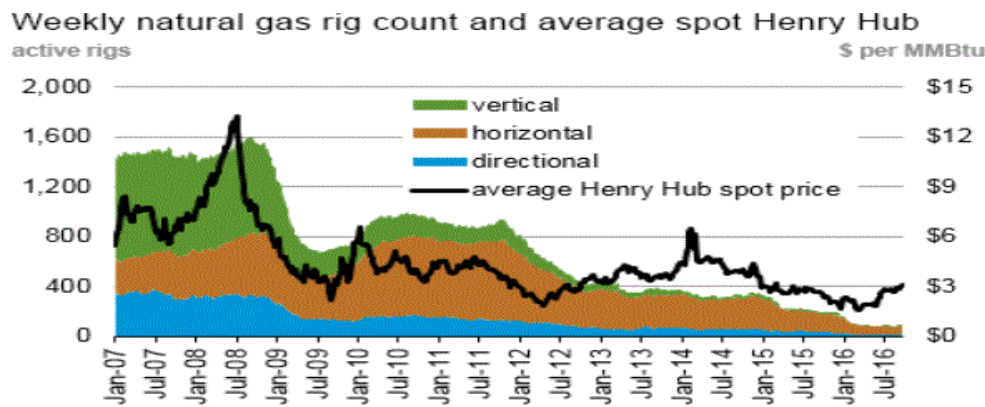
**Working gas in underground storage**

Region	Stocks billion cubic feet (Bcf)		
	2016-09-23	2016-09-16	change
East	874	851	23
Midwest	1,014	985	29
Mountain	233	230	3
Pacific	318	318	0
South Central	1,161	1,167	-6
Total	3,600	3,551	49

Source: U.S. Energy Information Administration

Source: Energy Information Administration, *Natural Gas Weekly Update*

### EIA Natural Gas Rig Count and Price Trend



Source: Baker Hughes

Source: Energy Information Administration, *Natural Gas Weekly Update*

### EIA Oil and Natural Gas Rig Productivity

Region	New-well oil production per rig barrels/day			New-well gas production per rig thousand cubic feet/day		
	September 2016	October 2016	change	September 2016	October 2016	change
Bakken	875	896	21	1,189	1,228	39
Eagle Ford	1,153	1,170	17	3,335	3,382	47
Haynesville	31	31	-	5,723	5,803	80
Marcellus	69	69	-	11,583	11,733	150
Niobrara	982	1,004	22	3,097	3,172	75
Permian	539	543	4	902	909	7
Utica	353	361	8	7,849	7,951	102
Rig-weighted average	595	605	10	2,804	2,715	(89)

Source: Energy Information Administration, *Drilling Productivity Report*