
National Mining Association

Weekly Statistical Summary

October 7, 2016 Edition
(Data for Week Ending October 1, 2016)

Prepared by
National Mining Association



Suite 500 East, 101 Constitution Avenue, NW
Washington, DC, 20001
Phone (202) 463-2600
Visit us at <http://www.nma.org>

NMA Weekly Statistical Summary

Vol. 54, No. 40
Dated 10/07/16

PRODUCTION, CONSUMPTION & TRADE

	Week Ended			* Cumulative Jan 1 to		
	10/01/16	10/03/15	% Chng	10/01/16	10/01/15	% Chng
EIA Coal Production (000 Tons):						
Week Ended/Year to Date	16,744	17,938	-6.7%	540,503	692,416	-21.9%
52 Weeks Ended	740,071	940,248	-21.3%			
AAR Coal Rail Cars Loaded:	91,943	102,604	-10.4%	2,971,003	3,973,791	-25.2%
Coal Production Month Ended - Sept.	Sep 16/15		% Chng	Jan - Sep 16/15		% Chng
	68,229	77,778	-12.3%	538,118	689,741	-22.0%

DOC Bituminous Coal Trade (000 Tons)

Exports:	August 16/15		% Chng	Jan - August 16/15		% Chng
Metallurgical	3,823	3,944	-3.1%	26,463	33,123	-20.1%
Steam *	1,158	2,418	-52.1%	9,865	19,875	-50.4%
Lignite	6	5	20.0%	46	41	12.2%
Anthracite	21	43	-51.2%	314	258	21.7%
Total	5,008	6,410	-21.9%	36,688	53,297	-31.2%
Imports:	943	970	-2.8%	6,922	7,710	-10.2%

	Week Ended			Cumulative Jan 1 to		
	10/01/16	10/03/15	% Chng	10/01/16	10/03/15	% Chng
EEI Electric Total Output (Mil. Kwh)	72,986	73,695	-1.0%	3,153,455	3,168,926	-0.5%
EEI Coal Region Output (Mil. Kwh)	62,101	62,932	-1.3%	2,719,961	2,731,607	-0.4%
AISI Raw Steel Output (000 Tons)	1,611	1,687	-4.5%	67,178	68,434	-1.8%

EIA (SNL ENERGY) AVERAGE COAL SPOT PRICES Dollars Per Short Ton

Average Coal Spot Prices (\$/Short Ton)	Week Ending			Natural Gas Spot Prices (\$/MMBtu)	
	09/30/16	09/23/16	% Chng	Wed.	09/28/16
Central App, 12,500 Btu, 1.2 SO ₂	\$40.20	\$40.20	0.0%	Henry Hub	2.98
Northern App, 13,000 Btu, < 3.0 SO ₂	41.45	41.45	0.0%	New York	0.86
Illinois Basin, 11,800, 5.0 SO ₂	32.00	32.00	0.0%	Chicago	2.87
Powder River Basin, 8,800 Btu 0.8 SO ₂	8.25	8.25	0.0%	Cal.Comp.Avg.	2.99
Uinta Basin, 11,700 Btu, 0.8 SO ₂	39.40	39.40	0.0%		

Coal exports and Imports are "as reported" (not revised); *Steam excludes lignite & anthracite. All data in this report are preliminary and subject to revision.

Sources: Energy Information Administration; Edison Electric Institute; American Iron & Steel Institute; Association of American Railroads; Dept. of Commerce; SNL Energy; NGI's Daily Gas Price Index



EIA Estimated Weekly U.S. Coal Production Overview									
	Week Ended			Year to Date			52 Weeks Ended		
Coal-Producing Region & State (thousand short tons)	10/1/2016 (week 40)	9/24/2016 (week 39)	10/3/2015 (week 40)	10/1/2016	10/1/2015	% Change	10/1/2016	10/3/2015	% Change
Alabama	195	187	228	7,049	10,867	-35.1	9,318	14,774	-36.9
Alaska	26	23	23	836	870	-3.9	1,136	1,187	-4.3
Arizona	113	111	127	4,013	5,446	-26.3	5,338	7,464	-28.5
Arkansas	1	1	2	46	74	-38.0	63	109	-42.2
Colorado	256	268	349	9,069	15,663	-42.1	12,207	21,143	-42.3
Illinois	984	927	1,049	34,496	44,405	-22.3	46,030	59,448	-22.6
Indiana	620	592	658	21,845	27,125	-19.5	28,840	36,819	-21.7
Kansas	3	3	4	80	145	-44.6	133	195	-31.8
Kentucky Total	1,008	971	1,162	33,978	48,652	-30.2	46,429	66,402	-30.1
Eastern (KY)	420	411	520	13,982	22,407	-37.6	19,526	30,698	-36.4
Western (KY)	587	560	643	19,996	26,245	-23.8	26,902	35,704	-24.7
Louisiana	72	71	82	2,298	2,683	-14.3	3,036	3,767	-19.4
Maryland	32	30	35	1,104	1,492	-26.0	1,516	1,965	-22.8
Mississippi	63	61	63	2,141	2,530	-15.4	2,739	3,244	-15.6
Missouri	2	3	2	135	122	10.7	151	187	-19.3
Montana	730	696	856	23,185	32,443	-28.5	32,375	44,913	-27.9
New Mexico	421	396	425	12,422	14,828	-16.2	17,154	19,611	-12.5
North Dakota	631	589	587	21,344	21,938	-2.7	28,041	29,270	-4.2
Ohio	312	291	327	10,810	13,391	-19.3	14,371	18,235	-21.2
Oklahoma	15	14	15	514	602	-14.6	688	805	-14.5
Pennsylvania Total	969	931	1,037	33,425	40,286	-17.0	44,041	55,261	-20.3
Anthracite (PA)	48	45	46	1,455	1,605	-9.3	1,979	2,117	-6.5
Bituminous (PA)	921	887	991	31,969	38,681	-17.4	42,062	53,144	-20.9
Tennessee	19	18	19	616	686	-10.1	823	925	-11.0
Texas	945	852	823	29,027	26,599	9.1	38,118	37,387	2.0
Utah	305	282	291	10,427	11,039	-5.5	13,724	15,389	-10.8
Virginia	291	266	270	9,826	10,814	-9.1	13,019	14,391	-9.5
West Virginia Total	1,763	1,620	1,805	58,754	74,454	-21.1	79,415	100,365	-20.9
Northern (WV)	991	884	938	31,654	35,952	-12.0	43,198	48,004	-10.0
Southern (WV)	772	736	867	27,100	38,502	-29.6	36,218	52,361	-30.8
Wyoming	6,966	6,521	7,699	213,063	285,259	-25.3	301,367	386,994	-22.1
Appalachian Total	4,002	3,754	4,240	135,565	174,398	-22.3	182,029	236,613	-23.1
Interior Total	3,294	3,085	3,341	110,579	130,530	-15.3	146,700	177,663	-17.4
Western Total	9,449	8,887	10,357	294,359	387,487	-24.0	411,341	525,971	-21.8
East of Mississippi River	6,256	5,895	6,654	214,043	274,704	-22.1	286,540	371,828	-22.9
West of Mississippi River	10,489	9,831	11,284	326,459	417,712	-21.8	453,531	568,420	-20.2
Bituminous and Lignite	16,697	15,681	17,892	539,047	690,811	-22.0	738,092	938,130	-21.3
Anthracite	48	45	46	1,455	1,605	-9.3	1,979	2,117	-6.5
U.S. Total	16,744	15,726	17,938	540,503	692,416	-21.9	740,071	940,248	-21.3
Railroad Cars Loaded	91,943	87,486	102,604	2,971,003	3,973,791	-25.2	4,122,315	5,424,451	-24.0

Source: Energy Information Administration

Prepared by EEI's Business Information Group

EEI
WEEKLY ELECTRIC OUTPUT

Volume 84 No. 40

OUTPUT FOR WEEK ENDED - Oct 01, 2016

Oct 05, 2016

The net available amount of electric energy distributed by the Total Electric Utility Industry+ for the week ended Saturday, Oct 01, 2016 was **72,986** gigawatthours (GWh), according to the Edison Electric Institute. This is equivalent to **180** on the weekly electric output index.

WEEKLY ELECTRIC OUTPUT BY GEOGRAPHIC DIVISION
(48 CONTIGUOUS STATES)

	Week Ended October 01		52 Weeks Ended October 01	
	GWh Output	% Increase Over Corresponding Week of 2015	GWh Output	% Increase Over Corresponding Period of 2015
New England	2,093	-7.4	123,495	-3.8
Mid-Atlantic	7,377	-6.2	432,777	-3.8
Central Industrial	11,117	-1.7	673,769	-1.6
West Central	5,804	-2.7	329,223	-0.9
Southeast	19,207	2.9	1,022,758	-0.6
South Central	13,211	-1.0	708,048	-0.3
Rocky Mountain	5,385	-7.0	277,101	0.3
Pacific Northwest	2,586	-1.6	152,318	0.2
Pacific Southwest	6,206	5.6	284,427	0.3
Total United States	72,986	-1.0	4,003,916	-1.0

WEEKLY ELECTRIC OUTPUT IN PREVIOUS WEEKS--GWh

Week Ended	2016	Week Ended	2015	% Inc. (16/15)	52 Weeks Ended	2016	% Inc. (16/15)
Sep 10	85,369	Sep 12	84,944	0.5	Sep 10	3,995,340	-1.1
Sep 17	80,570	Sep 19	77,331	4.2	Sep 17	3,998,579	-1.1
Sep 24	81,953	Sep 26	75,907	8.0	Sep 24	4,004,625	-1.0
Oct 01	72,986	Oct 03	73,695	-1.0	Oct 01	4,003,916	-1.0
Oct 01	3,153,455	Oct 03	3,168,926	-0.5	YEAR TO DATE, FIRST 40 WEEKS		

WEEKLY ELECTRIC OUTPUT INDEX--TOTAL U.S.*
SEASONALLY ADJUSTED 1982 = 100

Week Ended	2016	Week Ended	2015	Week Ended	2014
Sep 10	195	Sep 12	200	Sep 13	177
Sep 17	191	Sep 19	179	Sep 20	169
Sep 24	197	Sep 26	178	Sep 27	168
Oct 01	180	Oct 03	175	Oct 04	174

* Excludes Alaska and Hawaii.

+ Includes investor-owned companies, cooperatives and government-owned utilities.

Copyright © 2016 Edison Electric Institute. All rights reserved.

EEI WEEKLY ELECTRIC OUTPUT BY GEOGRAPHIC DIVISION
(48 CONTIGUOUS STATES)

	Week Ended			NMA CUMULATIVE JANUARY WEEK ONE TO			52 Weeks Ended		
	1-Oct 2016 GWh Output	3-Oct 2015 GWh Output	% Increase Over Corresponding Week of 2015	1-Oct 2016 GWh Output	3-Oct 2015 GWh Output	% Increase Over Corresponding Week of 2015	1-Oct 2016 GWh Output	3-Oct 2015 GWh Output	% Increase Over Corresponding Week of 2015
New England	2,093	2,259	-7.3%	96,913	100,311	-3.4%	123,495	128,360	-3.8%
Mid-Atlantic	7,377	7,862	-6.2%	342,348	353,929	-3.3%	432,777	450,060	-3.8%
Central Industrial	11,117	11,311	-1.7%	530,326	530,872	-0.1%	673,769	684,397	-1.6%
West Central	5,804	5,968	-2.7%	258,424	259,036	-0.2%	329,223	332,148	-0.9%
Southeast	19,207	18,658	2.9%	810,594	808,606	0.2%	1,022,758	1,028,908	-0.6%
South Central	13,211	13,343	-1.0%	564,804	565,982	-0.2%	708,048	710,317	-0.3%
Rocky Mountain	5,385	5,790	-7.0%	213,465	213,182	0.1%	277,101	276,292	0.3%
Pacific Northwest	2,586	2,628	-1.6%	114,977	114,809	0.1%	152,318	152,080	0.2%
Pacific Southwest	6,206	5,876	5.6%	221,604	222,202	-0.3%	284,427	283,562	0.3%
Total United States ^{1/}	<u>72,986</u>	<u>73,695</u>	-1.0%	3,153,455	3,168,929	-0.5%	4,003,916	4,046,124	-1.0%
Coal Regions Only ^{2/}	62,101	62,932	-1.3%	2,719,961	2,731,607	-0.4%	3,443,676	3,482,122	-1.1%

Notes: EEI output data are an estimate of electricity load made available for distribution derived as weekly net generation + purchases from non-utilities + net imports - exports - sales for resale. It is not meant to be a measure of electricity generation for the U.S. EEI survey data represent the majority of national distribution (large utilities, large government power projects, some independent and large municipal power projects). The remaining segment of the industry (smaller producers) is estimated. Non-utility generation is captured via direct sales to utilities.

^{1/} Excludes Alaska and Hawaii

^{2/} Excludes New England and Pacific regions

SOURCE: Edison Electric Institute (EEI), *Weekly Electric Output Report*.

AMERICAN IRON AND STEEL INSTITUTE
 25 Massachusetts Avenue, NW, Suite 800
 Washington, D.C. 20001

October 3, 2016

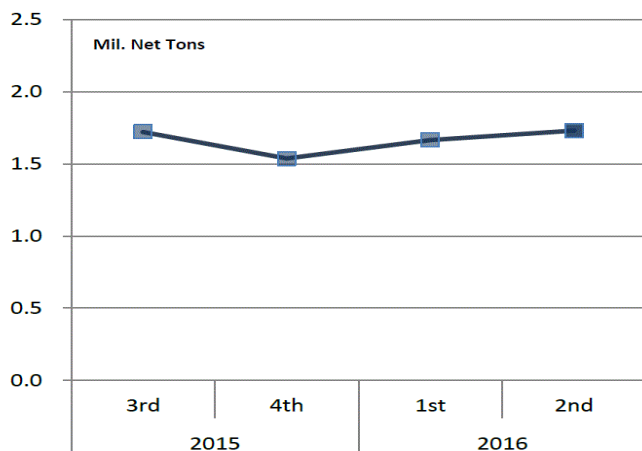
ESTIMATED WEEKLY RAW STEEL * PRODUCTION

<u>Period</u>	<u>Thousand Net Tons</u>	<u>Percent Change from Previous Period</u>	<u>Percent Capability Utilization**</u>	<u>Production by District</u>		
				<u>Week Ending Oct. 1</u>	<u>Week Ending Sep. 24</u>	
<u>Week Ending</u>				North East	193	201
				Great Lakes	671	636
October 1, 2016	1,611	0.4	68.9	Midwest	163	162
October 1, 2015	1,687	-4.5	70.5	Southern	512	541
September 24, 2016	1,605	-1.7	68.6	Western	<u>72</u>	<u>65</u>
				Total	1,611	1,605
<u>Year-to-Date +</u>						
October 1, 2016	67,178	-1.8	71.8			
October 1, 2015	68,434	-	72.1			

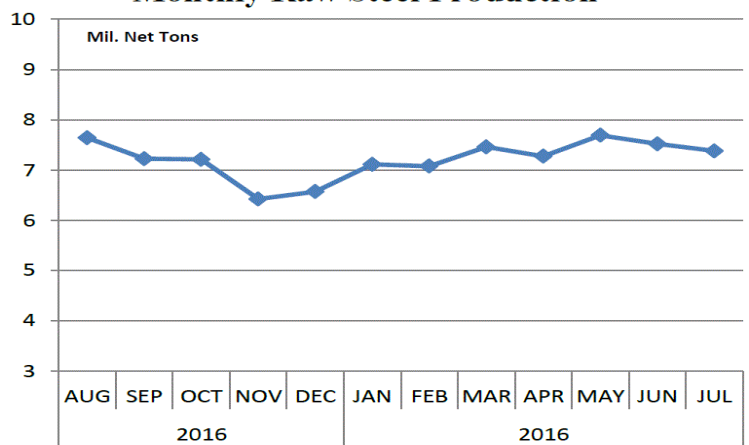
*Raw steel production tonnage included in this report is estimated based on a sampling of steel producers (50% of domestic producers). Therefore, this report should be used primarily to assess production trends. The AISI production report "AIS 7," produced monthly and available by subscription, provides a more accurate summary of steel production based on data supplied by companies representing approximately 75% of U.S. production capacity plus includes revisions for previous months.

NOTE: Capacity for the third quarter 2016 is approximately 30.7 million net tons vs. 31.4 million net tons for the same period last year, and 30.4 million tons for the second quarter of 2016.

Average Weekly Raw Steel Production



Monthly Raw Steel Production



*Steel in the first solid state after melting suitable for further processing or sale, including ingots, steel for castings and strand or pressure cast blooms, slabs or other product forms. ** Based on tonnage capability to produce raw steel for a sustained full order book.



Source: Kitco website - www.kitco.com/connecting.html

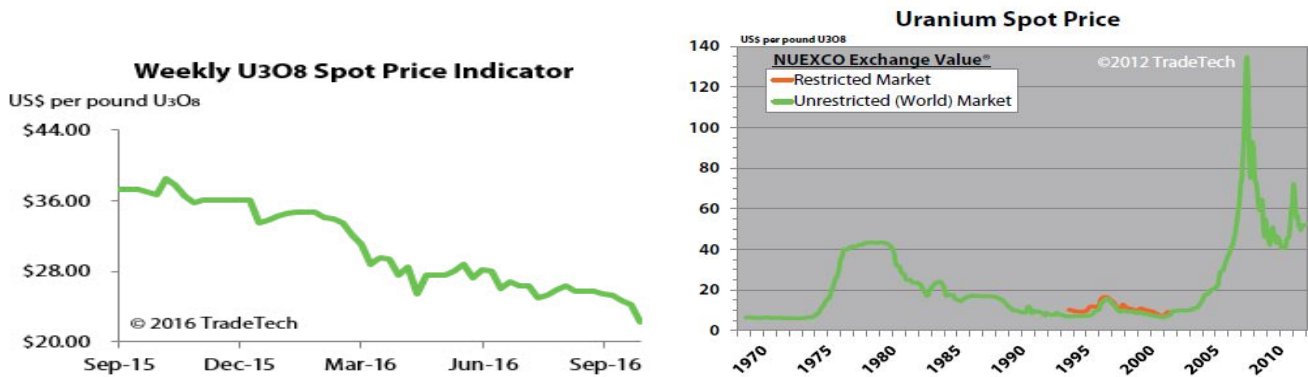


Source: Kitco website - www.kitco.com/connecting.html

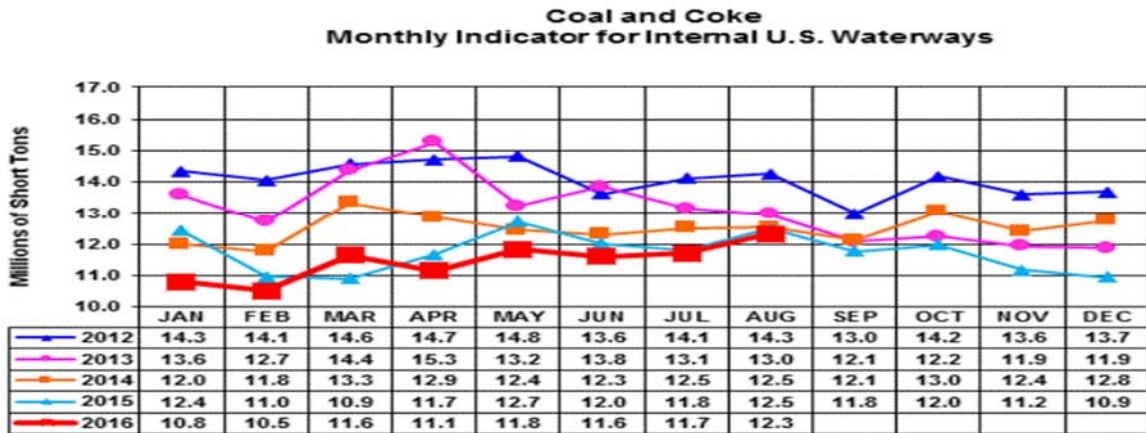


Source: Kitco website - www.kitco.com/connecting.html

Trade Tech's Uranium Price Indicators

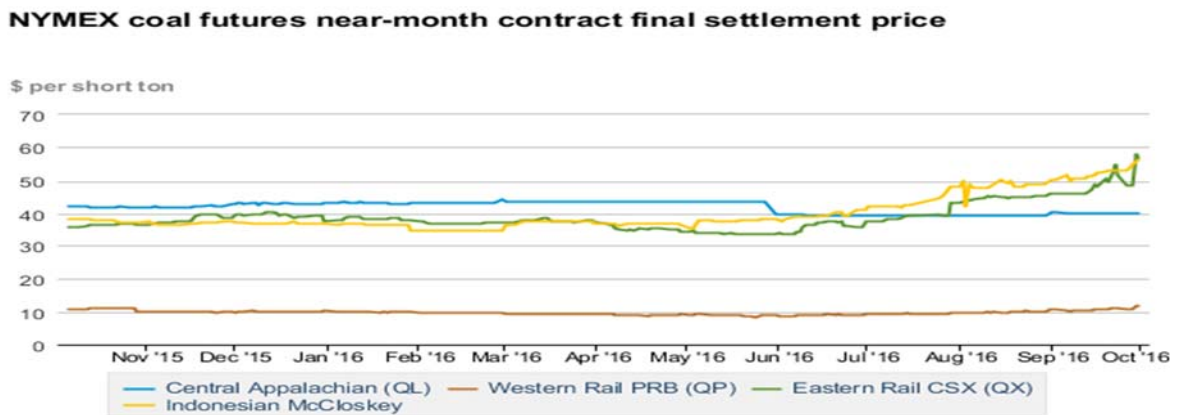


Source: Trade Tech, Uranium Info Website – www.uranium.info



Source: U.S. Army Corps of Engineers, Waterborne Commerce Statistics Center

NYMEX Coal Futures Near-month Contract Final Settlement Price



Source: The New York Mercantile Exchange (NYMEX), Daily Energy Bulletin.

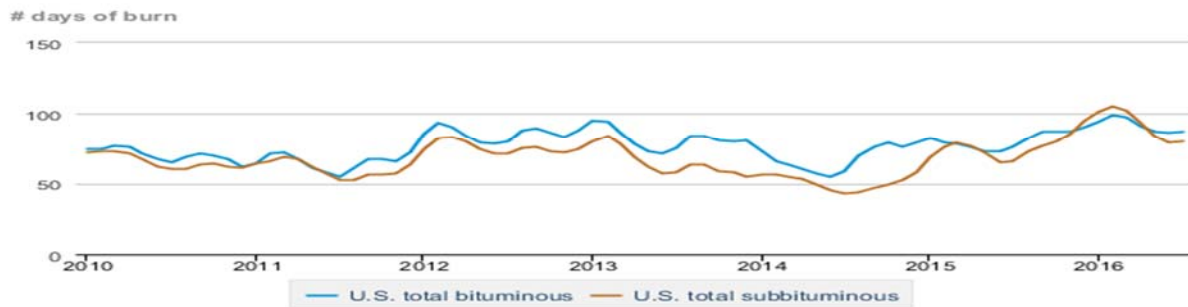
Source: Energy Information Administration, based on NYMEX and Daily Energy Bulletin data

Average weekly coal commodity spot prices dollars per short ton

	Week ending					Week ago
	09/02/16	09/09/16	09/16/16	09/23/16	09/30/16	change
Central Appalachia 12,500 Btu, 1.2 SO ₂	\$41.10	\$41.10	\$40.20	\$40.20	\$40.20	\$0.00
Northern Appalachia 13,000 Btu, < 3.0 SO ₂	\$42.35	\$42.35	\$41.45	\$41.45	\$41.45	\$0.00
Illinois Basin 11,800 Btu, 5.0 SO ₂	\$32.00	\$32.00	\$32.00	\$32.00	\$32.00	\$0.00
Powder River Basin 8,800 Btu, 0.8 SO ₂	\$8.70	\$8.70	\$8.25	\$8.25	\$8.25	\$0.00
Uinta Basin 11,700 Btu, 0.8 SO ₂	\$39.40	\$39.40	\$39.40	\$39.40	\$39.40	\$0.00

Source: Energy Information Administration (with permission from SNL), *Coal News and Markets Report*

Days of burn by non-lignite coal rank, January 2009 - July 2016



eia Source: U.S. Energy Information Administration

Source: Energy Information Administration, *Electricity Monthly Update Report*

Temperature -- heating & cooling degree days (week ending Sep 22)

Region	HDD Current	HDD deviation from:		CDD Current	CDD deviation from:	
		normal	last year		normal	last year
New England	2	-35	-16	35	34	18
Middle Atlantic	1	-28	-11	38	29	22
E N Central	2	-30	-19	45	35	34
W N Central	7	-29	-14	47	32	21
South Atlantic	0	-9	-2	91	35	30
E S Central	0	-9	-3	89	46	41
W S Central	0	-2	-1	118	44	20
Mountain	15	-26	-7	44	9	4
Pacific	6	-7	0	39	11	-8
United States	3	-20	-9	62	30	20

Note: HDD = heating degree-day; CDD = cooling degree-day

Source: National Oceanic and Atmospheric Administration

Source: Energy Information Administration

USGS Production of Selected Mineral Commodities	2016 Year to Date - 2nd Quarter	2015 Year to Date - 2nd Quarter	Percent Change
Aluminum, secondary (000 Mt.)	450.0	374.0	20%
Cement (Mil. Mt.)	38.9	36.6	6%
Copper (000 Mt.)	703.0	665.0	6%
Gold (Mt.)	103.0	97.7	5%
Gypsum (Mil. Mt.)	8.3	7.3	14%
Iron Ore (Mil. Mt.)	19.2	23.4	-18%
Lead (000 Mt.)	177.0	188.0	-6%
Molybdenum (000 Mt.)	17.7	27.3	-35%
Phosphate rock (Mil. Mt.)	12.7	13.8	-8%
Sand & gravel, construction (Mil. Mt.)	443.0	410.0	8%
Silver (Mt.)	567.0	551.0	3%
Soda ash (Mil. Mt.)	5.8	5.8	0%
Stone, crushed (Mil. Mt.)	648.0	582.0	11%
Zinc (000 Mt.)	404.0	417.0	-3%

Source: U.S. Geological Survey, Mineral Industry Surveys. Percent change based on USGS rounded numbers. 2016 data are preliminary estimates.

Natural gas spot prices (Henry Hub)



eia Source: Natural Gas Intelligence

Source: Energy Information Administration, *Natural Gas Weekly Update*

EIA Coal Stocks and Average Number of Days of Burn (Power Sector)

Coal stocks and average number of days of burn for non-lignite coal by region (electric power sector)

Zone	Coal	July 2016		July 2015		% Change of Stocks	June 2016		% Change of Stocks
		Stocks (1000 tons)	Days of Burn	Stocks (1000 tons)	Days of Burn		Stocks (1000 tons)	Days of Burn	
Northeast	Bituminous	6,320	115	6,735	112	-6.2%	7,043	119	-10.3%
	Subbituminous	163	134	762	217	-78.6%	171	157	-4.7%
South	Bituminous	30,996	81	30,364	72	2.1%	35,292	82	-12.2%
	Subbituminous	6,510	69	5,865	63	11.0%	7,180	74	-9.3%
Midwest	Bituminous	17,322	92	14,802	75	17.0%	18,434	91	-6.0%
	Subbituminous	42,951	78	36,809	60	16.7%	45,364	76	-5.3%
West	Bituminous	5,689	75	5,364	68	6.1%	5,862	75	-2.9%
	Subbituminous	33,520	85	31,508	76	6.4%	36,200	83	-7.4%
U.S. Total	Bituminous	60,327	87	57,265	76	5.3%	66,631	86	-9.5%
	Subbituminous	83,144	80	74,945	66	10.9%	88,915	79	-6.5%

Source: U.S. Energy Information Administration

Source: Energy Information Administration, *Electricity Monthly Update*

EIA Working Natural Gas Underground Storage

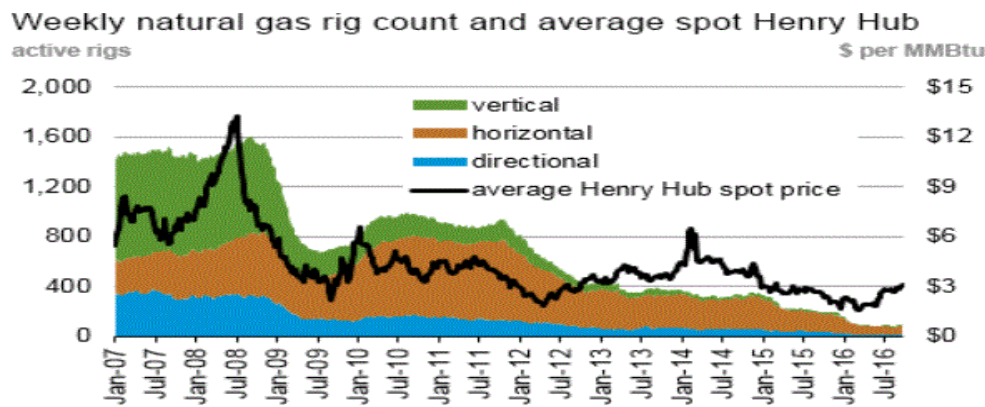
Working gas in underground storage

Region	Stocks billion cubic feet (Bcf)		
	2016-09-23	2016-09-16	change
East	874	851	23
Midwest	1,014	985	29
Mountain	233	230	3
Pacific	318	318	0
South Central	1,161	1,167	-6
Total	3,600	3,551	49

Source: U.S. Energy Information Administration

Source: Energy Information Administration, *Natural Gas Weekly Update*

EIA Natural Gas Rig Count and Price Trend



Source: Baker Hughes

Source: Energy Information Administration, *Natural Gas Weekly Update*

EIA Oil and Natural Gas Rig Productivity

Region	New-well oil production per rig barrels/day			New-well gas production per rig thousand cubic feet/day		
	September 2016	October 2016	change	September 2016	October 2016	change
Bakken	875	896	21	1,189	1,228	39
Eagle Ford	1,153	1,170	17	3,335	3,382	47
Haynesville	31	31	-	5,723	5,803	80
Marcellus	69	69	-	11,583	11,733	150
Niobrara	982	1,004	22	3,097	3,172	75
Permian	539	543	4	902	909	7
Utica	353	361	8	7,849	7,951	102
Rig-weighted average	595	605	10	2,804	2,715	(89)

Source: Energy Information Administration, *Drilling Productivity Report*