
National Mining Association

Weekly Statistical Summary

October 14, 2016 Edition
(Data for Week Ending October 8, 2016)

Prepared by
National Mining Association



Suite 500 East, 101 Constitution Avenue, NW
Washington, DC, 20001
Phone (202) 463-2600
Visit us at <http://www.nma.org>

NMA Weekly Statistical Summary

Vol. 54, No. 41
Dated 10/14/16

PRODUCTION, CONSUMPTION & TRADE

	Week Ended			* Cumulative Jan 1 to		
	10/08/16	10/10/15	% Chng	10/08/16	10/08/15	% Chng
EIA Coal Production (000 Tons):						
Week Ended/Year to Date	16,568	17,145	-3.4%	557,071	709,753	-21.5%
52 Weeks Ended	739,494	938,093	-21.2%			
AAR Coal Rail Cars Loaded:	90,195	98,637	-8.6%	3,061,198	4,073,549	-24.9%
Coal Production Month Ended - Sept.	Sep 16/15		% Chng	Jan - Sep 16/15		% Chng
	68,229	77,778	-12.3%	538,118	689,741	-22.0%

DOC Bituminous Coal Trade (000 Tons)

Exports:	August 16/15			Jan - August 16/15		
			% Chng			% Chng
Metallurgical	3,823	3,944	-3.1%	26,463	33,123	-20.1%
Steam *	1,158	2,418	-52.1%	9,865	19,875	-50.4%
Lignite	6	5	20.0%	46	41	12.2%
Anthracite	21	43	-51.2%	314	258	21.7%
Total	5,008	6,410	-21.9%	36,688	53,297	-31.2%
Imports:	943	970	-2.8%	6,922	7,710	-10.2%

	Week Ended			Cumulative Jan 1 to		
	10/08/16	10/10/15	% Chng	10/08/16	10/10/15	% Chng
EI Electric Total Output (Mil. Kwh)	72,741	71,102	2.3%	3,226,196	3,240,028	-0.4%
EI Coal Region Output (Mil. Kwh)	62,720	60,719	3.3%	2,782,681	2,792,326	-0.3%
AISI Raw Steel Output (000 Tons)	1,585	1,629	-2.7%	68,763	70,063	-1.9%

EIA (SNL ENERGY) AVERAGE COAL SPOT PRICES Dollars Per Short Ton

Average Coal Spot Prices (\$/Short Ton)	Week Ending			Natural Gas Spot Prices (\$/MMBtu)	
	10/07/16	09/30/16	% Chng	Wed.	10/05/16
Central App, 12,500 Btu, 1.2 SO ₂	\$39.55	\$40.20	-1.6%	Henry Hub	2.86
Northern App, 13,000 Btu, < 3.0 SO ₂	40.75	41.45	-1.7%	New York	1.07
Illinois Basin, 11,800, 5.0 SO ₂	33.25	32.00	3.9%	Chicago	2.81
Powder River Basin, 8,800 Btu 0.8 SO ₂	8.25	8.25	0.0%	Cal.Comp.Avg.	2.89
Uinta Basin, 11,700 Btu, 0.8 SO ₂	39.40	39.40	0.0%		

Coal exports and Imports are "as reported" (not revised); *Steam excludes lignite & anthracite. All data in this report are preliminary and subject to revision.

Sources: Energy Information Administration; Edison Electric Institute; American Iron & Steel Institute; Association of American Railroads; Dept. of Commerce; SNL Energy; NGI's Daily Gas Price Index



EIA Estimated Weekly U.S. Coal Production Overview									
	Week Ended			Year to Date			52 Weeks Ended		
Coal-Producing Region & State (thousand short tons)	10/8/2016 (week 41)	10/1/2016 (week 40)	10/10/2015 (week 41)	10/8/2016	10/8/2015	% Change	10/8/2016	10/10/2015	% Change
Alabama	188	195	195	7,237	11,064	-34.6	9,311	14,663	-36.5
Alaska	28	26	26	863	896	-3.6	1,138	1,188	-4.2
Arizona	108	113	114	4,121	5,562	-25.9	5,332	7,420	-28.1
Arkansas	1	1	1	47	75	-37.7	63	108	-41.7
Colorado	225	256	270	9,294	15,936	-41.7	12,162	20,984	-42.0
Illinois	1,020	984	991	35,516	45,407	-21.8	46,058	59,267	-22.3
Indiana	611	620	601	22,455	27,733	-19.0	28,850	36,663	-21.3
Kansas	3	3	5	84	150	-44.1	132	195	-32.3
Kentucky Total	976	1,008	1,070	34,954	49,734	-29.7	46,335	66,085	-29.9
Eastern (KY)	398	420	476	14,380	22,889	-37.2	19,448	30,526	-36.3
Western (KY)	577	587	593	20,573	26,845	-23.4	26,886	35,559	-24.4
Louisiana	69	72	63	2,368	2,747	-13.8	3,042	3,746	-18.8
Maryland	32	32	35	1,136	1,528	-25.7	1,512	1,963	-23.0
Mississippi	61	63	51	2,201	2,582	-14.8	2,748	3,240	-15.2
Missouri	2	2	1	138	124	11.2	152	183	-16.9
Montana	717	730	790	23,902	33,242	-28.1	32,303	44,729	-27.8
New Mexico	427	421	407	12,848	15,239	-15.7	17,174	19,647	-12.6
North Dakota	721	631	575	22,065	22,519	-2.0	28,186	29,276	-3.7
Ohio	315	312	306	11,126	13,700	-18.8	14,381	18,163	-20.8
Oklahoma	15	15	15	529	617	-14.2	689	804	-14.3
Pennsylvania Total	950	969	912	34,374	41,209	-16.6	44,079	55,004	-19.9
Anthracite (PA)	48	48	45	1,503	1,650	-8.9	1,982	2,123	-6.6
Bituminous (PA)	902	921	867	32,871	39,558	-16.9	42,097	52,882	-20.4
Tennessee	20	19	18	636	704	-9.6	825	924	-10.7
Texas	996	945	781	30,022	27,389	9.6	38,333	37,329	2.7
Utah	310	305	283	10,737	11,326	-5.2	13,751	15,333	-10.3
Virginia	298	291	274	10,124	11,092	-8.7	13,042	14,387	-9.3
West Virginia Total	1,789	1,763	1,775	60,543	76,249	-20.6	79,429	100,122	-20.7
Northern (WV)	1,033	991	992	32,686	36,955	-11.6	43,238	48,061	-10.0
Southern (WV)	756	772	783	27,856	39,294	-29.1	36,191	52,061	-30.5
Wyoming	6,689	6,966	7,586	219,752	292,931	-25.0	300,470	386,670	-22.3
Appalachian Total	3,990	4,002	3,992	139,555	178,435	-21.8	182,027	235,753	-22.8
Interior Total	3,355	3,294	3,103	113,934	133,668	-14.8	146,952	177,093	-17.0
Western Total	9,223	9,449	10,050	303,582	397,650	-23.7	410,515	525,248	-21.8
East of Mississippi River	6,258	6,256	6,228	220,301	281,002	-21.6	286,570	370,481	-22.6
West of Mississippi River	10,310	10,489	10,917	336,770	428,751	-21.5	452,925	567,612	-20.2
Bituminous and Lignite	16,520	16,697	17,100	555,568	708,103	-21.5	737,512	935,971	-21.2
Anthracite	48	48	45	1,503	1,650	-8.9	1,982	2,123	-6.6
U.S. Total	16,568	16,744	17,145	557,071	709,753	-21.5	739,494	938,093	-21.2
Railroad Cars Loaded	90,195	91,943	98,637	3,061,198	4,073,549	-24.9	4,113,873	5,410,427	-24.0

Source: Energy Information Administration

Prepared by EEI's Business Information Group

EEI
WEEKLY ELECTRIC OUTPUT

Volume 84 No. 41

OUTPUT FOR WEEK ENDED - Oct 08, 2016

Oct 12, 2016

The net available amount of electric energy distributed by the Total Electric Utility Industry+ for the week ended Saturday, Oct 08, 2016 was 72,741 gigawatthours (GWh), according to the Edison Electric Institute. This is equivalent to 185 on the weekly electric output index.

WEEKLY ELECTRIC OUTPUT BY GEOGRAPHIC DIVISION
(48 CONTIGUOUS STATES)

	Week Ended October 08		52 Weeks Ended October 08	
	GWh Output	% Increase Over Corresponding Week of 2015	GWh Output	% Increase Over Corresponding Period of 2015
New England	2,098	-1.1	123,471	-3.8
Mid-Atlantic	7,307	0.5	432,811	-3.8
Central Industrial	11,343	0.4	673,813	-1.5
West Central	5,813	0.9	329,273	-0.9
Southeast	19,263	5.2	1,023,709	-0.5
South Central	13,870	9.0	709,191	0.0
Rocky Mountain	5,124	-4.1	276,881	0.2
Pacific Northwest	2,620	1.0	152,345	0.2
Pacific Southwest	5,303	-6.4	284,062	0.2
Total United States	72,741	2.3	4,005,556	-1.0

WEEKLY ELECTRIC OUTPUT IN PREVIOUS WEEKS--GWh

Week Ended	2016	Week Ended	2015	% Inc. (16/15)	52 Weeks Ended	2016	% Inc. (16/15)
Sep 17	80,570	Sep 19	77,331	4.2	Sep 17	3,998,579	-1.1
Sep 24	81,953	Sep 26	75,907	8.0	Sep 24	4,004,625	-1.0
Oct 01	72,986	Oct 03	73,695	-1.0	Oct 01	4,003,916	-1.0
Oct 08	72,741	Oct 10	71,102	2.3	Oct 08	4,005,556	-1.0
Oct 08	3,226,196	Oct 10	3,240,028	-0.4	YEAR TO DATE, FIRST 41 WEEKS		

WEEKLY ELECTRIC OUTPUT INDEX--TOTAL U.S.*
SEASONALLY ADJUSTED 1982 = 100

Week Ended	2016	Week Ended	2015	Week Ended	2014
Sep 17	191	Sep 19	179	Sep 20	169
Sep 24	197	Sep 26	178	Sep 27	168
Oct 01	180	Oct 03	175	Oct 04	174
Oct 08	185	Oct 10	161	Oct 11	184

* Excludes Alaska and Hawaii.

+ Includes investor-owned companies, cooperatives and government-owned utilities.

Copyright © 2016 Edison Electric Institute. All rights reserved.

EEI WEEKLY ELECTRIC OUTPUT BY GEOGRAPHIC DIVISION
(48 CONTIGUOUS STATES)

	Week Ended			NMA CUMULATIVE JANUARY WEEK ONE TO			52 Weeks Ended		
	8-Oct 2016 GWh Output	10-Oct 2015 GWh Output	% Increase Over Corresponding Week of 2015	8-Oct 2016 GWh Output	10-Oct 2015 GWh Output	% Increase Over Corresponding Week of 2015	8-Oct 2016 GWh Output	10-Oct 2015 GWh Output	% Increase Over Corresponding Week of 2015
New England	2,098	2,122	-1.1%	99,011	102,433	-3.3%	123,471	128,306	-3.8%
Mid-Atlantic	7,307	7,272	0.5%	349,655	361,201	-3.2%	432,811	449,992	-3.8%
Central Industrial	11,343	11,299	0.4%	541,669	542,171	-0.1%	673,813	684,371	-1.5%
West Central	5,813	5,764	0.9%	264,237	264,800	-0.2%	329,273	332,272	-0.9%
Southeast	19,263	18,312	5.2%	829,857	826,918	0.4%	1,023,709	1,028,814	-0.5%
South Central	13,870	12,728	9.0%	578,674	578,710	0.0%	709,191	709,538	0.0%
Rocky Mountain	5,124	5,344	-4.1%	218,589	218,526	0.0%	276,881	276,213	0.2%
Pacific Northwest	2,620	2,594	1.0%	117,597	117,403	0.2%	152,345	152,054	0.2%
Pacific Southwest	5,303	5,667	-6.4%	226,907	227,869	-0.4%	284,062	283,454	0.2%
Total United States ^{1/}	72,741	71,102	2.3%	3,226,196	3,240,031	-0.4%	4,005,556	4,045,014	-1.0%
Coal Regions Only ^{2/}	62,720	60,719	3.3%	2,782,681	2,792,326	-0.3%	3,445,678	3,481,200	-1.0%

Notes: EEI output data are an estimate of electricity load made available for distribution derived as weekly net generation + purchases from non-utilities + net imports - exports - sales for resale. It is not meant to be a measure of electricity generation for the U.S. EEI survey data represent the majority of national distribution (large utilities, large government power projects, some independent and large municipal power projects). The remaining segment of the industry (smaller producers) is estimated. Non-utility generation is captured via direct sales to utilities.

^{1/} Excludes Alaska and Hawaii

^{2/} Excludes New England and Pacific regions

SOURCE: Edison Electric Institute (EEI), *Weekly Electric Output Report*.

AMERICAN IRON AND STEEL INSTITUTE
 25 Massachusetts Avenue, NW, Suite 800
 Washington, D.C. 20001

October 11, 2016

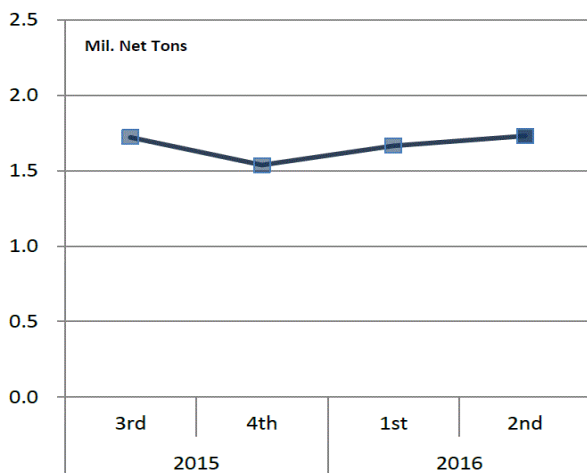
ESTIMATED WEEKLY RAW STEEL * PRODUCTION

<u>Period</u>	<u>Thousand Net Tons</u>	<u>Percent Change from Previous Period</u>	<u>Percent Capability Utilization**</u>	<u>Production by District</u>		
				<u>Week Ending</u>		
				<u>Oct. 8</u>	<u>Oct. 1</u>	
<u>Week Ending</u>				North East	187	193
				Great Lakes	666	671
October 8, 2016	1,585	-1.6	66.8	Midwest	167	163
October 8, 2015	1,629	-2.7	68.1	Southern	495	512
October 1, 2016	1,611	0.4	68.9	Western	<u>70</u>	<u>72</u>
				Total	1,585	1,611
<u>Year-to-Date +</u>						
October 8, 2016	68,763	-1.9	71.7			
October 8, 2015	70,063	-	71.7			

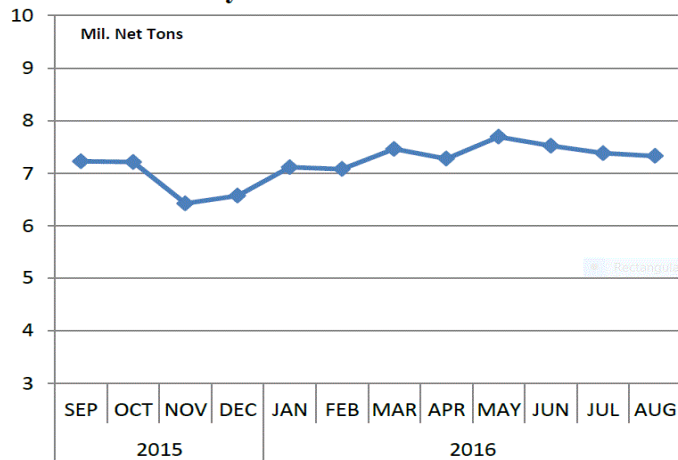
*Raw steel production tonnage included in this report is estimated based on a sampling of steel producers (50% of domestic producers). Therefore, this report should be used primarily to assess production trends. The AISI production report "AIS 7," produced monthly and available by subscription, provides a more accurate summary of steel production based on data supplied by companies representing approximately 75% of U.S. production capacity plus includes revisions for previous months.

NOTE: Capacity for the fourth quarter 2016 is approximately 31.2 million net tons vs. 31.4 million net tons for the same period last year, and 30.7 million tons for the third quarter of 2016.

Average Weekly Raw Steel Production



Monthly Raw Steel Production



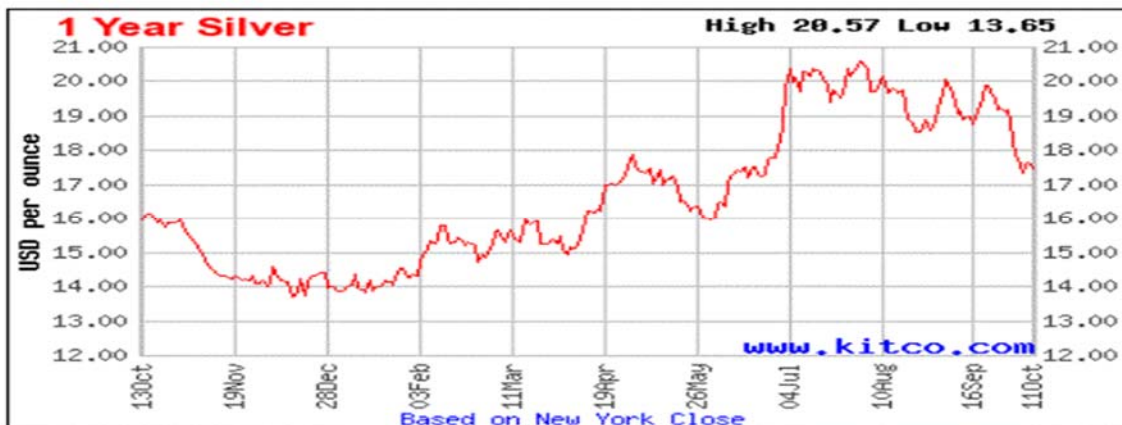
*Steel in the first solid state after melting suitable for further processing or sale, including ingots, steel for castings and strand or pressure cast blooms, slabs or other product forms. ** Based on tonnage capability to produce raw steel for a sustained full order book.



Source: Kitco website - www.kitco.com/connecting.html

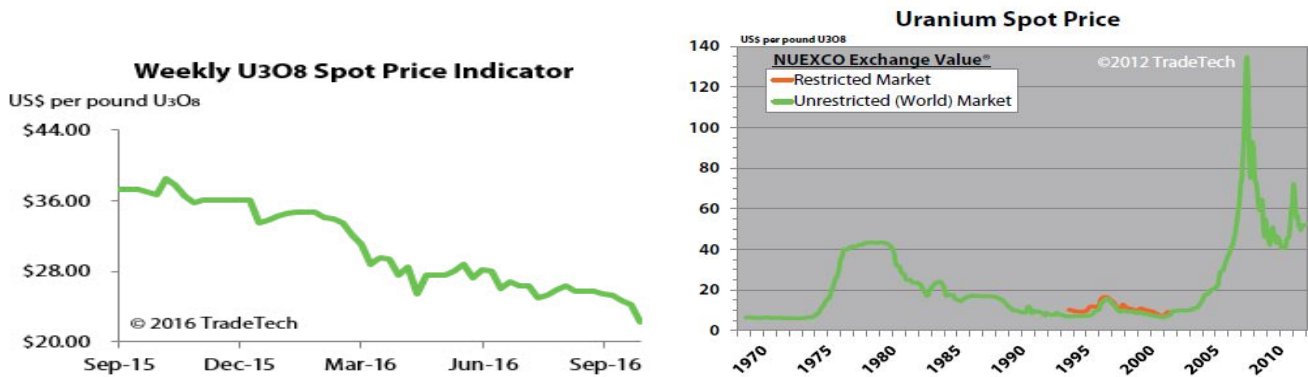


Source: Kitco website - www.kitco.com/connecting.html

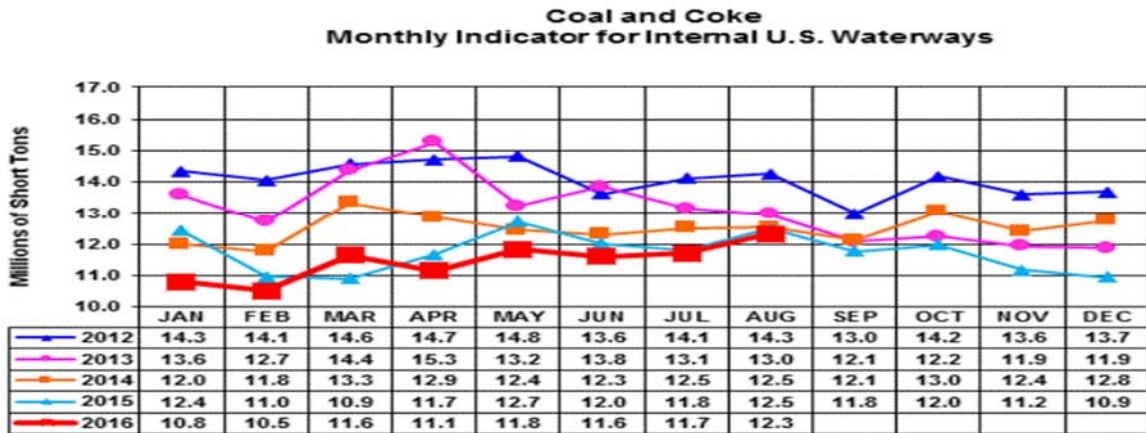


Source: Kitco website - www.kitco.com/connecting.html

Trade Tech's Uranium Price Indicators

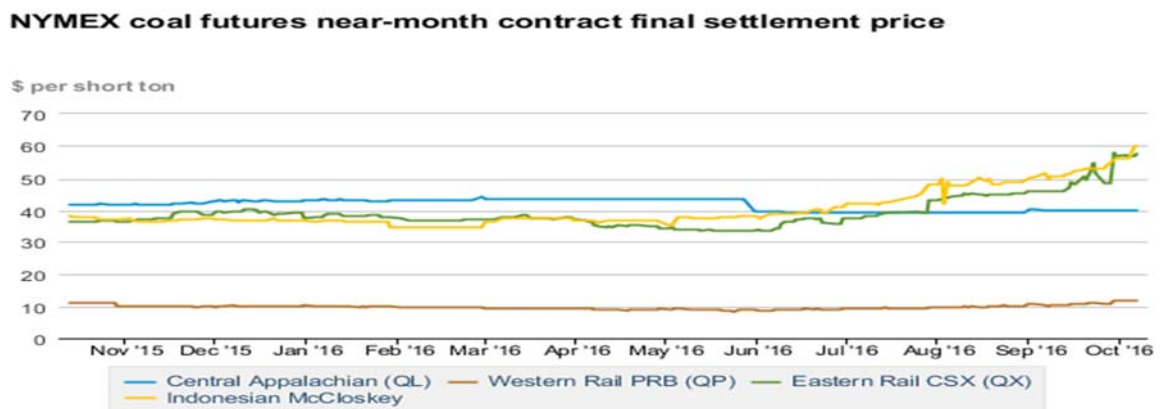


Source: Trade Tech, Uranium Info Website – www.uranium.info



Source: U.S. Army Corps of Engineers, Waterborne Commerce Statistics Center

NYMEX Coal Futures Near-month Contract Final Settlement Price



Source: The New York Mercantile Exchange (NYMEX), Daily Energy Bulletin.

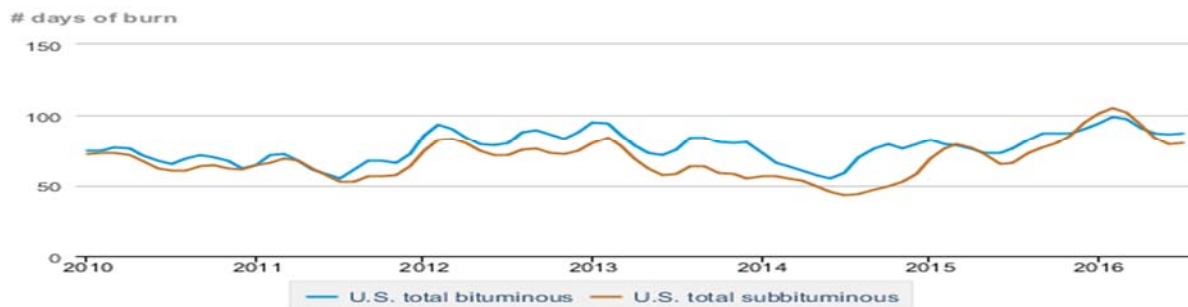
Source: Energy Information Administration, based on NYMEX and Daily Energy Bulletin data

Average weekly coal commodity spot prices dollars per short ton

	Week ending					Week ago
	09/09/16	09/16/16	09/23/16	09/30/16	10/07/16	change
Central Appalachia 12,500 Btu, 1.2 SO ₂	\$41.10	\$40.20	\$40.20	\$40.20	\$39.55	\$-0.65
Northern Appalachia 13,000 Btu, < 3.0 SO ₂	\$42.35	\$41.45	\$41.45	\$41.45	\$40.75	\$-0.70
Illinois Basin 11,800 Btu, 5.0 SO ₂	\$32.00	\$32.00	\$32.00	\$32.00	\$33.25	\$1.25
Powder River Basin 8,800 Btu, 0.8 SO ₂	\$8.70	\$8.25	\$8.25	\$8.25	\$8.25	\$0.00
Uinta Basin 11,700 Btu, 0.8 SO ₂	\$39.40	\$39.40	\$39.40	\$39.40	\$39.40	\$0.00

Source: Energy Information Administration (with permission from SNL), *Coal News and Markets Report*

Days of burn by non-lignite coal rank, January 2009 - July 2016



Source: U.S. Energy Information Administration

Source: Energy Information Administration, *Electricity Monthly Update Report*

Temperature -- heating & cooling degree days (week ending Sep 29)

Region	HDD Current	HDD deviation from:		CDD Current	CDD deviation from:	
		normal	last year		normal	last year
New England	22	-31	-14	5	4	-1
Middle Atlantic	21	-22	7	7	2	-3
E N Central	21	-26	2	16	10	5
W N Central	29	-18	9	21	11	-2
South Atlantic	1	-17	-4	79	32	20
E S Central	4	-12	2	71	38	24
W S Central	1	-3	1	80	19	1
Mountain	30	-21	20	25	-3	-30
Pacific	4	-12	-3	48	27	-5
United States	15	-18	2	42	17	3

Note: HDD = heating degree-day; CDD = cooling degree-day

Source: National Oceanic and Atmospheric Administration

Source: Energy Information Administration

USGS Production of Selected Mineral Commodities	2016 Year to Date - 2nd Quarter	2015 Year to Date - 2nd Quarter	Percent Change
Aluminum, secondary (000 Mt.)	450.0	374.0	20%
Cement (Mil. Mt.)	38.9	36.6	6%
Copper (000 Mt.)	703.0	665.0	6%
Gold (Mt.)	103.0	97.7	5%
Gypsum (Mil. Mt.)	8.3	7.3	14%
Iron Ore (Mil. Mt.)	19.2	23.4	-18%
Lead (000 Mt.)	177.0	188.0	-6%
Molybdenum (000 Mt.)	17.7	27.3	-35%
Phosphate rock (Mil. Mt.)	12.7	13.8	-8%
Sand & gravel, construction (Mil. Mt.)	443.0	410.0	8%
Silver (Mt.)	567.0	551.0	3%
Soda ash (Mil. Mt.)	5.8	5.8	0%
Stone, crushed (Mil. Mt.)	648.0	582.0	11%
Zinc (000 Mt.)	404.0	417.0	-3%

Source: U.S. Geological Survey, Mineral Industry Surveys. Percent change based on USGS rounded numbers. 2016 data are preliminary estimates.

Natural gas spot prices (Henry Hub)



eia Source: Natural Gas Intelligence

Source: Energy Information Administration, *Natural Gas Weekly Update*

EIA Coal Stocks and Average Number of Days of Burn (Power Sector)

Coal stocks and average number of days of burn for non-lignite coal by region (electric power sector)

Zone	Coal	July 2016		July 2015		% Change of Stocks	June 2016		% Change of Stocks
		Stocks (1000 tons)	Days of Burn	Stocks (1000 tons)	Days of Burn		Stocks (1000 tons)	Days of Burn	
Northeast	Bituminous	6,320	115	6,735	112	-6.2%	7,043	119	-10.3%
	Subbituminous	163	134	762	217	-78.6%	171	157	-4.7%
South	Bituminous	30,996	81	30,364	72	2.1%	35,292	82	-12.2%
	Subbituminous	6,510	69	5,865	63	11.0%	7,180	74	-9.3%
Midwest	Bituminous	17,322	92	14,802	75	17.0%	18,434	91	-6.0%
	Subbituminous	42,951	78	36,809	60	16.7%	45,364	76	-5.3%
West	Bituminous	5,689	75	5,364	68	6.1%	5,862	75	-2.9%
	Subbituminous	33,520	85	31,508	76	6.4%	36,200	83	-7.4%
U.S. Total	Bituminous	60,327	87	57,265	76	5.3%	66,631	86	-9.5%
	Subbituminous	83,144	80	74,945	66	10.9%	88,915	79	-6.5%

Source: U.S. Energy Information Administration

Source: Energy Information Administration, *Electricity Monthly Update*

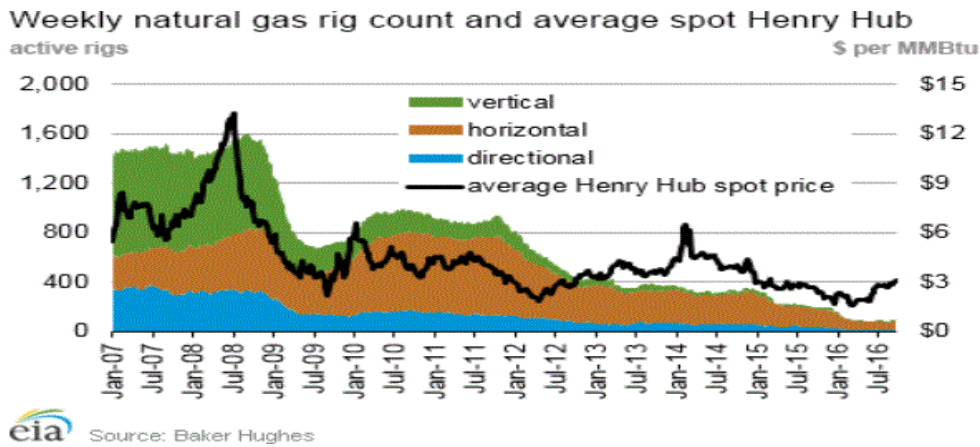
EIA Working Natural Gas Underground Storage

Working gas in underground storage

Region	Stocks billion cubic feet (Bcf)		
	2016-09-30	2016-09-23	change
East	899	874	25
Midwest	1,045	1,014	31
Mountain	237	233	4
Pacific	318	318	0
South Central	1,181	1,161	20
Total	3,680	3,600	80

Source: U.S. Energy Information Administration

EIA Natural Gas Rig Count and Price Trend



Source: Energy Information Administration, *Natural Gas Weekly Update*

EIA Oil and Natural Gas Rig Productivity

Region	New-well oil production per rig barrels/day			New-well gas production per rig thousand cubic feet/day		
	September 2016	October 2016	change	September 2016	October 2016	change
Bakken	875	896	21	1,189	1,228	39
Eagle Ford	1,153	1,170	17	3,335	3,382	47
Haynesville	31	31	-	5,723	5,803	80
Marcellus	69	69	-	11,583	11,733	150
Niobrara	982	1,004	22	3,097	3,172	75
Permian	539	543	4	902	909	7
Utica	353	361	8	7,849	7,951	102
Rig-weighted average	595	605	10	2,804	2,715	(89)

Source: Energy Information Administration, *Drilling Productivity Report*