

---

National Mining Association

# Weekly Statistical Summary

January 6, 2017 Edition  
(Data for Week Ending December 31, 2016)

Prepared by  
National Mining Association



Suite 500 East, 101 Constitution Avenue, NW  
Washington, DC, 20001  
Phone (202) 463-2600  
Visit us at <http://www.nma.org>

# NMA Weekly Statistical Summary

Vol. 54, No. 53  
Dated 01/06/17

## PRODUCTION, CONSUMPTION & TRADE

	Week Ended			* Cumulative Jan 1 to		
	12/31/16	12/26/15	% Chng	12/31/16	12/31/15	% Chng
<b>EIA Coal Production (000 Tons):</b>						
Week Ended/Year to Date	12,399	11,906	4.1%	738,661	896,941	-17.6%
52 Weeks Ended	747,046	898,655	-16.9%			
AAR Coal Rail Cars Loaded:	68,939	70,350	-2.0%	4,114,305	5,153,838	-20.2%
Coal Production Month Ended - Dec.	<b>Dec 16/15</b>		<b>% Chng</b>	<b>Jan - Dec 16/15</b>		<b>% Chng</b>
	66,123	63,001	5.0%	738,661	896,941	-17.6%
<b>DOC Bituminous Coal Trade (000 Tons)</b>						
<b>Exports:</b>	<b>October 16/15</b>			<b>Jan - Oct 16/15</b>		
			<b>% Chng</b>			<b>% Chng</b>
Metallurgical	3,157	3,452	-8.5%	32,448	40,011	-18.9%
Steam *	1,695	2,274	-25.5%	12,967	24,080	-46.2%
Lignite	7	5	40.0%	58	52	11.5%
Anthracite	8	16	-50.0%	359	292	22.9%
<b>Total</b>	<b>4,867</b>	<b>5,747</b>	<b>-15.3%</b>	<b>45,832</b>	<b>64,435</b>	<b>-28.9%</b>
<b>Imports:</b>	768	854	-10.1%	8,491	9,468	-10.3%
	<b>Week Ended</b>			<b>Cumulative Week 1 to</b>		
	<b>12/31/16</b>	<b>01/02/16</b>	<b>% Chng</b>	<b>12/31/16</b>	<b>01/02/16</b>	<b>% Chng</b>
<b>EI Electric Total Output (Mil. Kwh)</b>	72,818	74,353	-2.1%	4,100,746	4,093,743	0.2%
<b>EI Coal Region Output (Mil. Kwh)</b>	61,767	63,027	-2.0%	3,530,307	3,518,352	0.3%
<b>AISI Raw Steel Output (000 Tons) *</b>	1,592	1,485	7.2%	87,972	88,419	-0.5%

\* AISI cum data is year to date week ended 12/31/16 and 12/31/15. Note: the year 2016 has an extra Saturday.

## EIA (SNL ENERGY) AVERAGE COAL & NATURAL GAS SPOT PRICES Dollars Per Short Ton

Average Coal Spot Prices (\$/Short Ton)	Week Ending			Natural Gas Spot Prices (\$/MMBtu)	
	12/30/16	12/23/16	% Chng	Wed.	12/21/16
Central App, 12,500 Btu, 1.2 SO <sub>2</sub>	\$48.05	\$48.05	0.0%	Henry Hub	3.48
Northern App, 13,000 Btu, < 3.0 SO <sub>2</sub>	45.75	45.75	0.0%	New York	3.65
Illinois Basin, 11,800, 5.0 SO <sub>2</sub>	34.50	34.50	0.0%	Chicago	3.49
Powder River Basin, 8,800 Btu 0.8 SO <sub>2</sub>	11.00	11.00	0.0%	Cal.Comp.Avg.	3.49
Uinta Basin, 11,700 Btu, 0.8 SO <sub>2</sub>	40.90	40.90	0.0%		

Coal exports and Imports are "as reported" (not revised); \*Steam excludes lignite & anthracite. All data in this report are preliminary and subject to revision.

Sources: Energy Information Administration; Edison Electric Institute; American Iron & Steel Institute; Association of American Railroads; Dept. of Commerce; SNL Energy; NGI's Daily Gas Price Index



## EIA Estimated Weekly U.S. Coal Production Overview

Coal-Producing Region & State (thousand short tons)	Week Ended			Year to Date			52 Weeks Ended		
	12/31/2016 (week 53)	12/24/2016 (week 52)	12/26/2015 (week 52)	12/31/2016	12/31/2015	% Change	12/31/2016	12/26/2015	% Change
Alabama	128	173	135	8,835	13,193	-33.0	8,930	13,257	-32.6
Alaska	21	25	18	1,070	1,177	-9.1	1,082	1,178	-8.1
Arizona	87	105	79	5,439	6,805	-20.1	5,495	6,831	-19.6
Arkansas	1	1	1	44	91	-52.3	44	92	-52.2
Colorado	152	198	187	11,413	18,879	-39.5	11,545	18,972	-39.1
Illinois	708	931	688	45,156	56,227	-19.7	45,641	56,356	-19.0
Indiana	487	579	417	29,364	34,295	-14.4	29,658	34,397	-13.8
Kansas	2	2	3	69	199	-65.3	71	199	-64.3
<b>Kentucky Total</b>	<b>709</b>	<b>878</b>	<b>743</b>	<b>43,797</b>	<b>61,434</b>	<b>-28.7</b>	<b>44,320</b>	<b>61,636</b>	<b>-28.1</b>
Eastern (KY)	269	345	331	17,288	28,110	-38.5	17,521	28,216	-37.9
Western (KY)	440	533	412	26,509	33,324	-20.5	26,799	33,420	-19.8
Louisiana	46	58	44	2,853	3,439	-17.0	2,884	3,452	-16.5
Maryland	24	30	25	1,488	1,922	-22.6	1,505	1,924	-21.8
Mississippi	51	56	36	2,921	3,143	-7.1	2,946	3,147	-6.4
Missouri	3	2	1	208	138	50.4	209	140	49.3
Montana	513	662	548	31,880	41,864	-23.8	32,266	41,987	-23.2
New Mexico	262	336	282	14,731	19,679	-25.1	14,930	19,674	-24.1
North Dakota	497	675	400	29,354	28,802	1.9	29,636	28,818	2.8
Ohio	248	289	212	14,175	17,041	-16.8	14,324	17,089	-16.2
Oklahoma	11	14	10	666	780	-14.7	673	781	-13.8
<b>Pennsylvania Total</b>	<b>735</b>	<b>891</b>	<b>633</b>	<b>45,163</b>	<b>50,872</b>	<b>-11.2</b>	<b>45,610</b>	<b>51,037</b>	<b>-10.6</b>
Anthracite (PA)	31	38	31	1,786	2,142	-16.6	1,808	2,141	-15.6
Bituminous (PA)	704	853	602	43,377	48,730	-11.0	43,801	48,897	-10.4
Tennessee	15	17	12	785	897	-12.5	794	899	-11.7
Texas	805	940	542	41,842	35,918	16.5	42,224	35,975	17.4
Utah	249	298	197	14,077	14,419	-2.4	14,215	14,458	-1.7
Virginia	233	280	190	13,630	14,321	-4.8	13,764	14,332	-4.0
<b>West Virginia Total</b>	<b>1,324</b>	<b>1,692</b>	<b>1,233</b>	<b>81,198</b>	<b>95,633</b>	<b>-15.1</b>	<b>82,067</b>	<b>95,821</b>	<b>-14.4</b>
Northern (WV)	780	976	689	44,987	47,785	-5.9	45,472	47,789	-4.8
Southern (WV)	544	716	544	36,212	47,848	-24.3	36,595	48,032	-23.8
Wyoming	5,088	6,068	5,268	298,503	375,773	-20.6	302,213	376,202	-19.7
<b>Appalachian Total</b>	<b>2,976</b>	<b>3,718</b>	<b>2,772</b>	<b>182,561</b>	<b>221,988</b>	<b>-17.8</b>	<b>184,514</b>	<b>222,575</b>	<b>-17.1</b>
<b>Interior Total</b>	<b>2,553</b>	<b>3,117</b>	<b>2,155</b>	<b>149,633</b>	<b>167,556</b>	<b>-10.7</b>	<b>151,150</b>	<b>167,961</b>	<b>-10.0</b>
<b>Western Total</b>	<b>6,869</b>	<b>8,366</b>	<b>6,979</b>	<b>406,467</b>	<b>507,397</b>	<b>-19.9</b>	<b>411,382</b>	<b>508,120</b>	<b>-19.0</b>
<b>East of Mississippi River</b>	<b>4,661</b>	<b>5,818</b>	<b>4,325</b>	<b>286,512</b>	<b>348,978</b>	<b>-17.9</b>	<b>289,559</b>	<b>349,896</b>	<b>-17.2</b>
<b>West of Mississippi River</b>	<b>7,738</b>	<b>9,384</b>	<b>7,581</b>	<b>452,148</b>	<b>547,963</b>	<b>-17.5</b>	<b>457,488</b>	<b>548,759</b>	<b>-16.6</b>
Bituminous and Lignite	12,368	15,163	11,875	736,875	894,799	-17.6	745,238	896,514	-16.9
Anthracite	31	38	31	1,786	2,142	-16.6	1,808	2,141	-15.6
<b>U.S. Total</b>	<b>12,399</b>	<b>15,201</b>	<b>11,906</b>	<b>738,661</b>	<b>896,941</b>	<b>-17.6</b>	<b>747,046</b>	<b>898,655</b>	<b>-16.9</b>
Railroad Cars Loaded	68,939	84,518	70,350	4,114,305	5,153,838	-20.2	4,163,851	5,164,851	-19.4

Source: Energy Information Administration

EEI Prepared by EEI's Business Information Group

**WEEKLY ELECTRIC OUTPUT**

Volume 84 No. 53

**OUTPUT FOR WEEK ENDED - Dec 31, 2016**

Jan 05, 2017

The net available amount of electric energy distributed by the Total Electric Utility Industry+ for the week ended Saturday, Dec 31, 2016 was **72,818** gigawatthours (GWh), according to the Edison Electric Institute. This is equivalent to **181** on the weekly electric output index.

**WEEKLY ELECTRIC OUTPUT BY GEOGRAPHIC DIVISION**

(48 CONTIGUOUS STATES)

	Week Ended December 31		52 Weeks Ended December 31	
	GWh Output	% Increase Over Corresponding Week of 2015	GWh Output	% Increase Over Corresponding Period of 2015
New England	2,362	1.2	123,972	-2.2
Mid-Atlantic	8,090	5.2	436,080	-1.7
Central Industrial	12,143	-3.2	676,832	0.5
West Central	6,032	-1.9	330,753	0.4
Southeast	18,050	0.8	1,031,965	1.1
South Central	11,848	-7.5	716,334	1.1
Rocky Mountain	5,604	-5.4	275,312	-0.5
Pacific Northwest	3,720	-3.7	152,225	0.0
Pacific Southwest	4,969	-3.1	282,919	-0.8
Total United States	72,818	-2.1	4,026,393	0.2

**WEEKLY ELECTRIC OUTPUT IN PREVIOUS WEEKS--GWh**

Week Ended	2016	Week Ended	2015	% Inc. (16/16)	52 Weeks Ended	2016	% Inc. (16/16)
Dec 10	79,065	Dec 12	72,279	9.4	Dec 10	4,009,833	-0.3
Dec 17	81,602	Dec 19	74,793	9.1	Dec 17	4,016,642	-0.1
Dec 24	81,466	Dec 26	70,180	16.1	Dec 24	4,027,928	0.2
Dec 31	72,818	Jan 02	74,353	-2.1	Dec 31	4,026,393	0.2

**WEEKLY ELECTRIC OUTPUT INDEX--TOTAL U.S.\***

SEASONALLY ADJUSTED 1982 = 100

Week Ended	2016	Week Ended	2015	Week Ended	2014
Dec 10	187	Dec 12	168	Dec 13	194
Dec 17	194	Dec 19	169	Dec 20	197
Dec 24	203	Dec 26	156	Dec 27	191
Dec 31	181	Jan 02	178	Jan 03	179

\* Excludes Alaska and Hawaii.

+ Includes investor-owned companies, cooperatives and government-owned utilities.

Copyright © 2016 Edison Electric Institute. All rights reserved.

**EEl WEEKLY ELECTRIC OUTPUT BY GEOGRAPHIC DIVISION**  
**(48 CONTIGUOUS STATES)**

	Week Ended			NMA CUMULATIVE JANUARY WEEK ONE* TO			52 Weeks Ended		
	31-Dec	2-Jan	% Increase Over Corresponding Week of 2015	31-Dec	2-Jan	% Increase Over Corresponding Week of 2015	31-Dec	2-Jan	% Increase Over Corresponding Week of 2015
	2016	2015		2016	2015		2016	2015	
	GWh	GWh		GWh	GWh		GWh	GWh	
	Output	Output		Output	Output		Output	Output	
<b>New England</b>	2,362	2,333	1.2%	<b>126,305</b>	<b>129,227</b>	<b>-2.3%</b>	123,972	126,761	-2.2%
<b>Mid-Atlantic</b>	8,090	7,694	5.1%	<b>443,776</b>	<b>452,054</b>	<b>-1.8%</b>	436,082	443,569	-1.7%
<b>Central Industrial</b>	12,143	12,543	-3.2%	<b>689,380</b>	<b>686,863</b>	<b>0.4%</b>	676,837	673,660	0.5%
<b>West Central</b>	6,032	6,147	-1.9%	<b>336,901</b>	<b>335,984</b>	<b>0.3%</b>	330,754	329,593	0.4%
<b>Southeast</b>	18,050	17,913	0.8%	<b>1,049,876</b>	<b>1,038,680</b>	<b>1.1%</b>	1,031,963	1,020,236	1.1%
<b>South Central</b>	11,848	12,808	-7.5%	<b>729,142</b>	<b>722,036</b>	<b>1.0%</b>	716,334	708,615	1.1%
<b>Rocky Mountain</b>	5,604	5,922	-5.4%	<b>281,232</b>	<b>282,735</b>	<b>-0.5%</b>	275,310	276,698	-0.5%
<b>Pacific Northwest</b>	3,720	3,863	-3.7%	<b>156,083</b>	<b>156,008</b>	<b>0.0%</b>	152,220	152,153	0.0%
<b>Pacific Southwest</b>	4,969	5,130	-3.1%	<b>288,051</b>	<b>290,156</b>	<b>-0.7%</b>	282,921	285,109	-0.8%
<b>Total United States <sup>1/</sup></b>	<b>72,818</b>	<b>74,353</b>	<b>-2.1%</b>	<b>4,100,746</b>	<b>4,093,743</b>	<b>0.2%</b>	4,026,393	4,016,394	0.2%
<b>Coal Regions Only <sup>2/</sup></b>	61,767	63,027	-2.0%	<b>3,530,307</b>	<b>3,518,352</b>	<b>0.3%</b>	3,467,280	3,452,371	0.4%

Notes: EEl output data are an estimate of electricity load made available for distribution derived as weekly net generation + purchases from non-utilities + net imports - exports - sales for resale. It is not meant to be a measure of electricity generation for the U.S. EEl survey data represent the majority of national distribution (large utilities, large government power projects, some independent and large municipal power projects). The remaining segment of the industry (smaller producers) is estimated. Non-utility generation is captured via direct sales to utilities. \* Note: the year 2016 has an extra Saturday.

<sup>1/</sup> Excludes Alaska and Hawaii

<sup>2/</sup> Excludes New England and Pacific regions

SOURCE: Edison Electric Institute (EEl), *Weekly Electric Output Report*.

AMERICAN IRON AND STEEL INSTITUTE  
 25 Massachusetts Avenue, NW, Suite 800  
 Washington, D.C. 20001

January 3, 2017

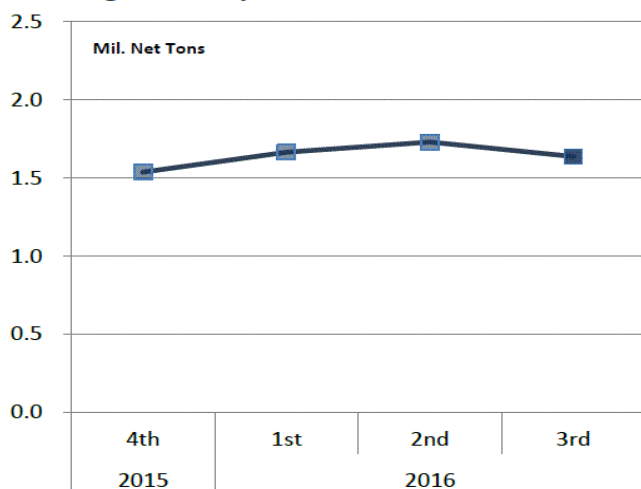
**ESTIMATED WEEKLY RAW STEEL \* PRODUCTION**

<u>Period</u>	<u>Thousand Net Tons</u>	<u>Percent Change from Previous Period</u>	<u>Percent Capability Utilization**</u>	<u>Production by District</u>		
				<u>Week Ending Dec. 31</u>	<u>Dec. 24</u>	
<b><u>Week Ending</u></b>				North East	205	204
				Great Lakes	647	652
December 31, 2016	1,592	-2.7	67.1	Midwest	163	168
December 31, 2015	1,485	7.2	62.1	Southern	518	547
December 24, 2016	1,636	-3.4	69.0	Western	59	65
				<b>Total</b>	<b>1,592</b>	<b>1,636</b>
<b><u>Year-to-Date +</u></b>						
December 31, 2016	87,972	-0.5	70.8			
December 31, 2015	88,419	-	70.1			

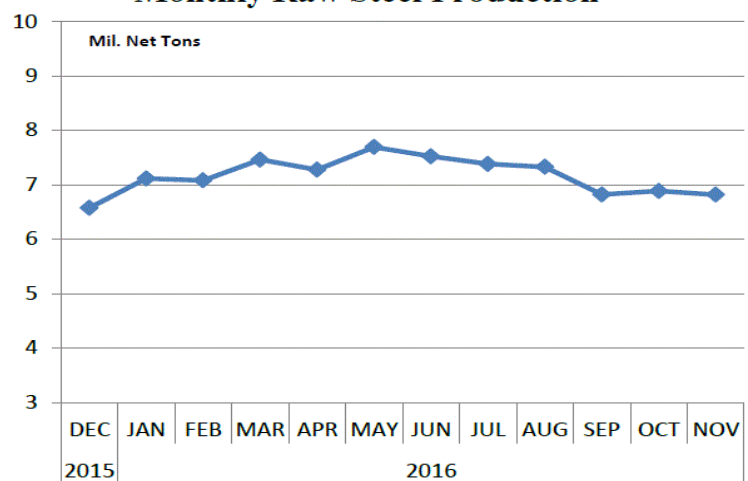
\*Raw steel production tonnage included in this report is estimated based on a sampling of steel producers (50% of domestic producers). Therefore, this report should be used primarily to assess production trends. The AISI production report "AIS 7," produced monthly and available by subscription, provides a more accurate summary of steel production based on data supplied by companies representing approximately 75% of U.S. production capacity plus includes revisions for previous months.

NOTE: Capacity for the fourth quarter 2016 is approximately 31.2 million net tons vs. 31.4 million net tons for the same period last year, and 30.7 million tons for the third quarter of 2016.

**Average Weekly Raw Steel Production**



**Monthly Raw Steel Production**



\*Steel in the first solid state after melting suitable for further processing or sale, including ingots, steel for castings and strand or pressure cast blooms, slabs or other product forms. \*\* Based on tonnage capability to produce raw steel for a sustained full order book.



Source: Kitco website - [www.kitco.com/connecting.html](http://www.kitco.com/connecting.html)

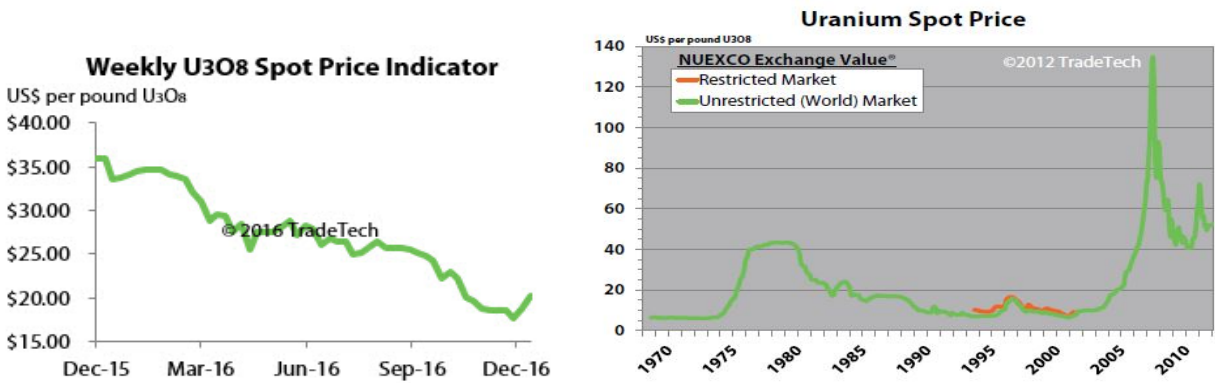


Source: Kitco website - [www.kitco.com/connecting.html](http://www.kitco.com/connecting.html)

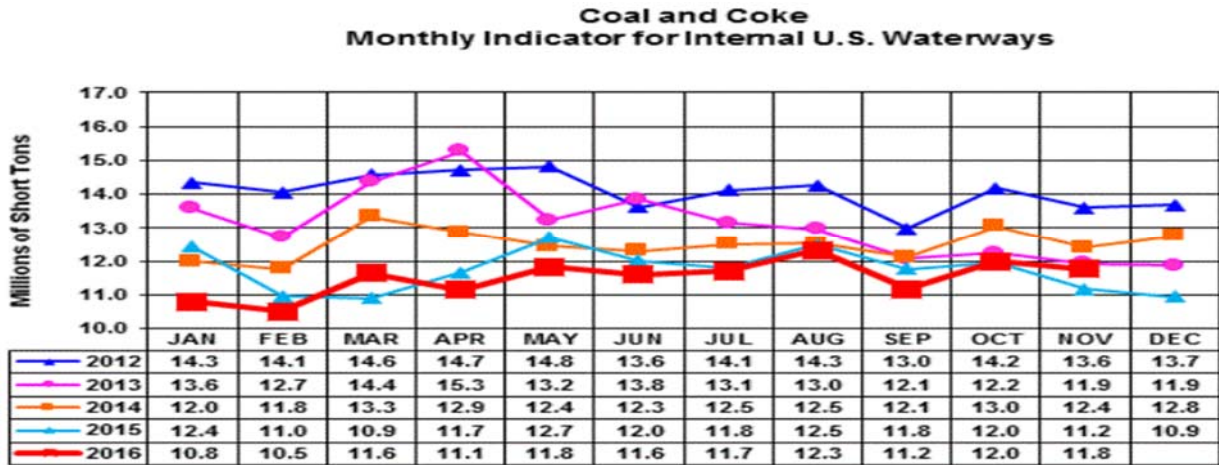


Source: Kitco website - [www.kitco.com/connecting.html](http://www.kitco.com/connecting.html)

### Trade Tech's Uranium Price Indicators



Source: Trade Tech, Uranium Info Website – [www.uranium.info](http://www.uranium.info)



Source: U.S. Army Corps of Engineers, Waterborne Commerce Statistics Center

### NYMEX Coal Futures Near-month Contract Final Settlement Price



Source: The New York Mercantile Exchange (NYMEX), Daily Energy Bulletin.

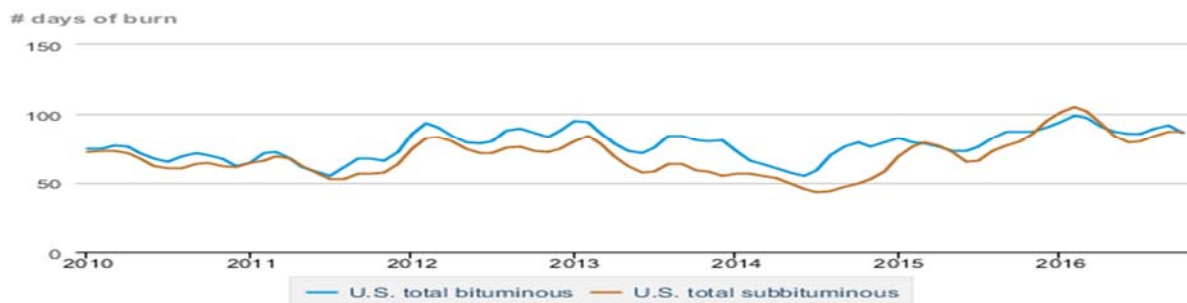
Source: Energy Information Administration, based on NYMEX and Daily Energy Bulletin data

### Average weekly coal commodity spot prices dollars per short ton

	Week ending					Week ago
	12/02/16	12/09/16	12/16/16	12/23/16	12/30/16	change
Central Appalachia 12,500 Btu, 1.2 SO <sub>2</sub>	\$45.05	\$48.05	\$48.05	\$48.05	\$48.05	\$0.00
Northern Appalachia 13,000 Btu, < 3.0 SO <sub>2</sub>	\$42.25	\$45.75	\$45.75	\$45.75	\$45.75	\$0.00
Illinois Basin 11,800 Btu, 5.0 SO <sub>2</sub>	\$33.25	\$34.50	\$34.50	\$34.50	\$34.50	\$0.00
Powder River Basin 8,800 Btu, 0.8 SO <sub>2</sub>	\$9.00	\$11.00	\$11.00	\$11.00	\$11.00	\$0.00
Uinta Basin 11,700 Btu, 0.8 SO <sub>2</sub>	\$39.40	\$40.90	\$40.90	\$40.90	\$40.90	\$0.00

Source: Energy Information Administration (with permission from SNL), *Coal News and Markets Report*

### Days of burn by non-lignite coal rank, January 2009 - October 2016



 Source: U.S. Energy Information Administration

Source: Energy Information Administration, *Electricity Monthly Update Report*

### Temperature -- heating & cooling degree days (week ending Dec 15)

Region	HDD Current	HDD deviation from:		CDD Current	CDD deviation from:	
		normal	last year		normal	last year
New England	251	23	138	0	0	0
Middle Atlantic	242	25	145	0	0	0
E N Central	309	61	199	0	0	0
W N Central	341	67	176	0	0	0
South Atlantic	173	21	117	10	2	-6
E S Central	187	29	134	0	-1	-3
W S Central	120	4	77	1	-1	-11
Mountain	200	-23	-9	0	0	0
Pacific	94	-25	-40	0	0	0
United States	217	22	107	2	1	-3

Note: HDD = heating degree day; CDD = cooling degree day

Source: National Oceanic and Atmospheric Administration

Source: Energy Information Administration

USGS Production of Selected Mineral Commodities	2016 Year to Date - 3rd Quarter	2015 Year to Date - 3rd Quarter	Percent Change
Aluminum, secondary (000 Mt.)	673.0	556.0	21%
Cement (Mil. Mt.)	62.3	61.1	2%
Copper (000 Mt.)	1,080.0	1,040.0	4%
Gold (Mt.)	157.0	157.0	0%
Gypsum (Mil. Mt.)	12.4	11.3	10%
Iron Ore (Mil. Mt.)	29.3	32.8	-11%
Lead (000 Mt.)	260.0	277.0	-6%
Molybdenum (000 Mt.)	26.1	40.1	-35%
Phosphate rock (Mil. Mt.)	20.2	20.8	-3%
Sand & gravel, construction (Mil. Mt.)	732.0	703.0	4%
Silver (Mt.)	853.0	814.0	5%
Soda ash (Mil. Mt.)	8.8	8.7	1%
Stone, crushed (Mil. Mt.)	1,050.0	990.0	6%
Zinc (000 Mt.)	597.0	604.0	-1%

Source: U.S. Geological Survey, Mineral Industry Surveys. Percent change based on USGS rounded numbers. 2016 data are preliminary estimates.

### Natural gas spot prices (Henry Hub)



Source: Natural Gas Intelligence

Source: Energy Information Administration, *Natural Gas Weekly Update*

### EIA Coal Stocks and Average Number of Days of Burn (Power Sector)

Coal stocks and average number of days of burn for non-lignite coal by region (electric power sector)

Zone	Coal	October 2016		October 2015		% Change of Stocks	September 2016		% Change of Stocks
		Stocks (1000 tons)	Days of Burn	Stocks (1000 tons)	Days of Burn		Stocks (1000 tons)	Days of Burn	
Northeast	Bituminous	5,646	84	7,509	95	-24.8%	5,487	95	2.9%
	Subbituminous	136	69	731	174	-81.4%	136	97	0.0%
South	Bituminous	27,996	83	34,879	89	-19.7%	27,339	88	2.4%
	Subbituminous	6,039	73	6,946	76	-13.1%	5,631	68	7.2%
Midwest	Bituminous	16,909	94	16,311	82	3.7%	16,549	99	2.2%
	Subbituminous	43,096	84	41,629	71	3.5%	40,862	84	5.5%
West	Bituminous	5,859	84	5,628	75	4.1%	5,885	84	-0.5%
	Subbituminous	31,312	95	34,905	94	-10.3%	30,830	95	1.6%
U.S. Total	Bituminous	56,410	86	64,328	87	-12.3%	55,260	92	2.1%
	Subbituminous	80,583	87	84,211	80	-4.3%	77,459	87	4.0%

Source: Energy Information Administration, *Electricity Monthly Update*

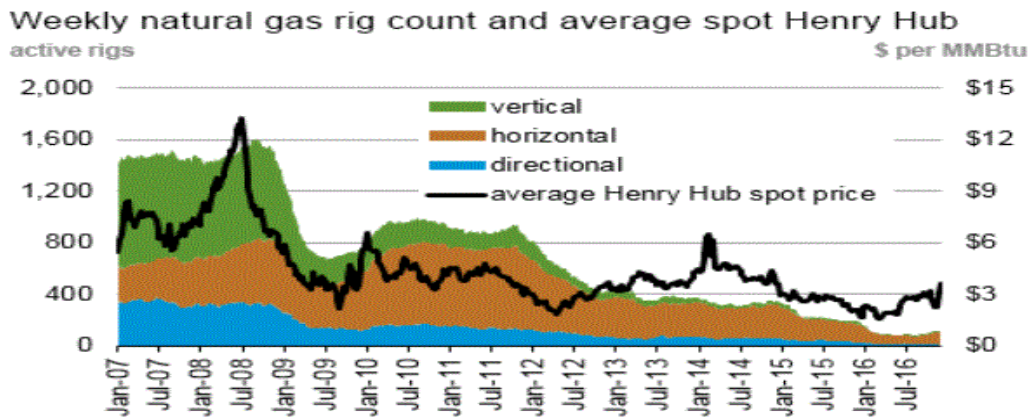
### EIA Working Natural Gas Underground Storage

#### Working gas in underground storage

Region	Stocks billion cubic feet (Bcf)		
	2016-12-16	2016-12-09	change
East	810	865	-55
Midwest	1,007	1,071	-64
Mountain	230	244	-14
Pacific	302	312	-10
South Central	1,248	1,314	-66
Total	3,597	3,806	-209

Source: U.S. Energy Information Administration

### EIA Natural Gas Rig Count and Price Trend



Source: Baker Hughes

Source: Energy Information Administration, *Natural Gas Weekly Update*

### EIA Oil and Natural Gas Rig Productivity

Region	New-well oil production per rig barrels/day			New-well gas production per rig thousand cubic feet/day		
	December 2016	January 2017	change	December 2016	January 2017	change
Bakken	947	967	20	1,318	1,385	67
Eagle Ford	1,315	1,341	26	3,769	3,847	78
Haynesville	30	30	-	6,157	6,273	116
Marcellus	69	69	-	12,305	12,468	163
Niobrara	1,182	1,218	36	3,811	3,922	111
Permian	629	634	5	1,057	1,062	5
Utica	127	118	(9)	8,581	8,638	57
Rig-weighted average	654	664	10	3,172	3,221	49

Source: Energy Information Administration, *Drilling Productivity Report*