

National Mining Association

Weekly Statistical Summary

January 27, 2017 Edition
(Data for Week Ending January 21, 2017)

Prepared by
National Mining Association



Suite 500 East, 101 Constitution Avenue, NW
Washington, DC, 20001
Phone (202) 463-2600
Visit us at <http://www.nma.org>

NMA Weekly Statistical Summary

Vol. 55, No. 3
Dated 01/27/17

PRODUCTION, CONSUMPTION & TRADE

	Week Ended			* Cumulative Jan 1 to		
	01/21/17	01/16/16	% Chng	01/21/17	01/21/16	% Chng
EIA Coal Production (000 Tons):						
Week Ended/Year to Date	16,759	13,901	20.6%	46,251	40,755	13.5%
52 Weeks Ended	754,009	881,915	-14.5%			
AAR Coal Rail Cars Loaded:	90,786	75,308	20.6%	250,543	221,247	13.2%
DOC Coal Trade (000 Tons)						
Exports:						
	November 16/15		% Chng	Jan - Nov 16/15		% Chng
Metallurgical	3,844	2,859	34.5%	36,292	42,870	-15.3%
Steam *	2,670	1,806	47.8%	15,636	25,887	-39.6%
Lignite	6	6	0.0%	64	58	10.3%
Anthracite	38	40	-5.0%	397	332	19.6%
Total	6,558	4,711	39.2%	52,389	69,147	-24.2%
Imports:	706	882	-20.0%	9,197	10,349	-11.1%
EEI Electric Total Output (Mil. Kwh)						
	Week Ended		% Chng	Cumulative Week 1 to		
	01/21/17	01/23/16		01/21/17	01/23/16	% Chng
EEI Coal Region Output (Mil. Kwh)	73,665	83,491	-11.8%	236,100	242,360	-2.6%
EEI Coal Region Output (Mil. Kwh)	62,131	72,547	-14.4%	200,644	208,722	-3.9%
AISI Raw Steel Output (000 Tons)	1,703	1,607	6.0%	5,103	4,821	5.8%

EIA (SNL ENERGY) AVERAGE COAL & NATURAL GAS SPOT PRICES Dollars Per Short Ton

Average Coal Spot Prices (\$/Short Ton)	Week Ending			Natural Gas Spot Prices (\$/MMBtu)	
	01/20/17	01/13/17	% Chng	Wed.	01/18/17
Central App, 12,500 Btu, 1.2 SO ₂	\$50.00	\$46.50	7.5%	Henry Hub	3.25
Northern App, 13,000 Btu, < 3.0 SO ₂	45.75	44.30	3.3%	New York	3.18
Illinois Basin, 11,800, 5.0 SO ₂	35.00	35.00	0.0%	Chicago	3.22
Powder River Basin, 8,800 Btu 0.8 SO ₂	11.80	11.05	6.8%	Cal.Comp.Avg.	3.36
Uinta Basin, 11,700 Btu, 0.8 SO ₂	41.10	41.10	0.0%		

Coal exports and Imports are "as reported" (not revised); *Steam excludes lignite & anthracite. All data in this report are preliminary and subject to revision.

Sources: Energy Information Administration; Edison Electric Institute; American Iron & Steel Institute; Association of American Railroads; Dept. of Commerce; SNL Energy; NGI's Daily Gas Price Index



NMA
THE AMERICAN RESOURCE

National Mining Association Web Site: [http:// www.nma.org](http://www.nma.org)

EIA Estimated Weekly U.S. Coal Production Overview

Coal-Producing Region & State (thousand short tons)	Week Ended			Year to Date			52 Weeks Ended		
	1/21/2017 (week 3)	1/14/2017 (week 2)	1/16/2016 (week 3)	1/21/2017	1/21/2016	% Change	1/21/2017	1/16/2016	% Change
Alabama	191	181	197	531	576	-7.9	8,928	12,853	-30.5
Alaska	29	28	25	79	73	7.7	1,093	1,182	-7.5
Arizona	121	115	107	336	314	6.9	5,537	6,708	-17.5
Arkansas	1	1	1	3	3	9.8	45	89	-49.4
Colorado	214	195	199	597	585	2.1	11,567	18,316	-36.8
Illinois	1,046	1,010	910	2,915	2,667	9.3	46,050	55,028	-16.3
Indiana	687	653	580	1,916	1,702	12.6	29,990	33,777	-11.2
Kansas	3	3	2	8	6	19.5	72	194	-62.9
Kentucky Total	959	910	912	2,646	2,673	-1.0	44,417	60,232	-26.3
Eastern (KY)	357	336	368	978	1,079	-9.4	17,448	27,430	-36.4
Western (KY)	602	574	543	1,668	1,593	4.7	26,969	32,802	-17.8
Louisiana	64	59	53	177	155	14.3	2,913	3,411	-14.6
Maryland	32	31	29	88	85	4.1	1,512	1,879	-19.5
Mississippi	68	67	62	191	181	5.1	2,974	3,132	-5.0
Missouri	5	5	3	15	10	55.9	216	138	56.5
Montana	672	633	597	1,839	1,750	5.1	32,391	41,103	-21.2
New Mexico	332	279	345	893	1,012	-11.7	14,857	19,705	-24.6
North Dakota	753	713	579	2,095	1,698	23.4	30,162	28,673	5.2
Ohio	342	330	313	950	917	3.5	14,429	16,786	-14.0
Oklahoma	16	15	13	45	39	14.5	681	771	-11.7
Pennsylvania Total	1,059	990	830	2,961	2,434	21.7	46,279	50,109	-7.6
Anthracite (PA)	42	39	35	115	102	13.1	1,824	2,127	-14.2
Bituminous (PA)	1,018	951	795	2,846	2,332	22.0	44,455	47,982	-7.4
Tennessee	19	19	19	53	54	-1.9	797	899	-11.3
Texas	1,129	1,085	797	3,145	2,336	34.7	43,216	36,167	19.5
Utah	361	340	270	1,010	792	27.5	14,486	14,331	1.1
Virginia	338	318	256	943	752	25.4	14,003	14,163	-1.1
West Virginia Total	1,898	1,802	1,547	5,269	4,537	16.1	83,027	93,848	-11.5
Northern (WV)	1,099	1,031	826	3,042	2,423	25.6	46,192	47,067	-1.9
Southern (WV)	799	771	721	2,226	2,114	5.3	36,835	46,780	-21.3
Wyoming	6,419	5,933	5,255	17,546	15,406	13.9	304,367	368,421	-17.4
Appalachian Total	4,236	4,007	3,559	11,774	10,434	12.8	186,423	217,967	-14.5
Interior Total	3,623	3,471	2,964	10,082	8,691	16.0	153,125	165,509	-7.5
Western Total	8,901	8,237	7,377	24,394	21,629	12.8	414,460	498,439	-16.8
East of Mississippi River	6,641	6,311	5,654	18,464	16,577	11.4	292,406	342,706	-14.7
West of Mississippi River	10,119	9,404	8,247	27,787	24,178	14.9	461,602	539,209	-14.4
Bituminous and Lignite	16,718	15,676	13,866	46,136	40,653	13.5	752,185	879,789	-14.5
Anthracite	42	39	35	115	102	13.1	1,824	2,127	-14.2
U.S. Total	16,759	15,716	13,901	46,251	40,755	13.5	754,009	881,915	-14.5
Railroad Cars Loaded	90,786	85,133	75,308	250,543	221,247	13.2	4,196,972	5,058,407	-17.0

Source: Energy Information Administration

Prepared by EEI's Business Information Group



WEEKLY ELECTRIC OUTPUT

Volume 85 No. 3

OUTPUT FOR WEEK ENDED - Jan 21, 2017

Jan 25, 2017

The net available amount of electric energy distributed by the Total Electric Utility Industry* for the week ended Saturday, Jan 21, 2017 was 73,665 gigawatthours (GWh), according to the Edison Electric Institute. This is equivalent to 161 on the weekly electric output index.

WEEKLY ELECTRIC OUTPUT BY GEOGRAPHIC DIVISION

(48 CONTIGUOUS STATES)

	Week Ended January 21		52 Weeks Ended January 21	
	GWh Output	% Increase Over Corresponding Week of 2016	GWh Output	% Increase Over Corresponding Period of 2016
New England	2,377	-9.0	123,683	-2.1
Mid-Atlantic	8,254	-11.6	435,203	-1.6
Central Industrial	12,637	-14.0	674,887	0.4
West Central	6,340	-9.9	330,116	0.2
Southeast	17,254	-24.0	1,027,559	0.7
South Central	12,060	-10.3	715,870	1.4
Rocky Mountain	5,586	4.6	275,563	-0.6
Pacific Northwest	3,924	14.1	153,956	0.9
Pacific Southwest	5,233	6.9	283,296	-0.7
Total United States	73,665	-11.8	4,020,133	0.2

WEEKLY ELECTRIC OUTPUT IN PREVIOUS WEEKS--GWh

Week Ended	2017	Week Ended	2016	% Inc. (17/16)	52 Weeks Ended	2017	% Inc. (17/16)
Dec 31	72,818	Jan 02	74,353	-2.1	Dec 31	4,026,393	0.2
Jan 07	81,914	Jan 09	79,219	3.4	Jan 07	4,029,088	0.5
Jan 14	80,521	Jan 16	79,650	1.1	Jan 14	4,029,959	0.6
Jan 21	73,665	Jan 23	83,491	-11.8	Jan 21	4,020,133	0.2
Jan 21	236,100	Jan 23	242,360	-2.6	YEAR TO DATE, FIRST 3 WEEKS		

WEEKLY ELECTRIC OUTPUT INDEX--TOTAL U.S.*

SEASONALLY ADJUSTED 1982 = 100

Week Ended	2017	Week Ended	2016	Week Ended	2015
Dec 31	181	Jan 02	178	Jan 03	179
Jan 07	188	Jan 09	181	Jan 10	197
Jan 14	177	Jan 16	182	Jan 17	188
Jan 21	161	Jan 23	193	Jan 24	177

* Excludes Alaska and Hawaii.

+ Includes investor-owned companies, cooperatives and government-owned utilities.

Copyright © 2017 Edison Electric Institute. All rights reserved.

**EEl WEEKLY ELECTRIC OUTPUT BY GEOGRAPHIC DIVISION
(48 CONTIGUOUS STATES)**

	Week Ended			NMA CUMULATIVE JANUARY WEEK ONE TO			52 Weeks Ended		
	21-Jan 2017 GWh Output	23-Jan 2016 GWh Output	% Increase Over Corresponding Week of 2016	21-Jan 2017 GWh Output	23-Jan 2016 GWh Output	% Increase Over Corresponding Week of 2016	21-Jan 2017 GWh Output	23-Jan 2016 GWh Output	% Increase Over Corresponding Week of 2016
New England	2,377	2,612	-9.0%	7,339	7,629	-3.8%	123,683	126,357	-2.1%
Mid-Atlantic	8,254	9,337	-11.6%	25,637	26,515	-3.3%	435,203	442,168	-1.6%
Central Industrial	12,637	14,686	-14.0%	40,632	42,577	-4.6%	674,887	672,378	0.4%
West Central	6,340	7,040	-9.9%	19,586	20,224	-3.2%	330,116	329,441	0.2%
Southeast	17,254	22,699	-24.0%	59,274	63,679	-6.9%	1,027,559	1,020,703	0.7%
South Central	12,060	13,444	-10.3%	38,710	39,174	-1.2%	715,870	705,953	1.4%
Rocky Mountain	5,586	5,341	4.6%	16,805	16,553	1.5%	275,563	277,106	-0.6%
Pacific Northwest	3,924	3,438	14.1%	12,672	10,941	15.8%	153,956	152,550	0.9%
Pacific Southwest	5,233	4,894	6.9%	15,445	15,068	2.5%	283,296	285,150	-0.7%
Total United States ^{1/}	73,665	83,491	-11.8%	236,100	242,360	-2.6%	4,020,133	4,011,806	0.2%
Coal Regions Only ^{2/}	62,131	72,547	-14.4%	200,644	208,722	-3.9%	3,459,198	3,447,749	0.3%

Notes: EEI output data are an estimate of electricity load made available for distribution derived as weekly net generation + purchases from non-utilities + net imports - exports - sales for resale. It is not meant to be a measure of electricity generation for the U.S. EEI survey data represent the majority of national distribution (large utilities, large government power projects, some independent and large municipal power projects). The remaining segment of the industry (smaller producers) is estimated. Non-utility generation is captured via direct sales to utilities.

^{1/} Excludes Alaska and Hawaii

^{2/} Excludes New England and Pacific regions

SOURCE: Edison Electric Institute (EEI), *Weekly Electric Output Report*.

AMERICAN IRON AND STEEL INSTITUTE
 25 Massachusetts Avenue, NW, Suite 800
 Washington, D.C. 20001

January 23, 2017

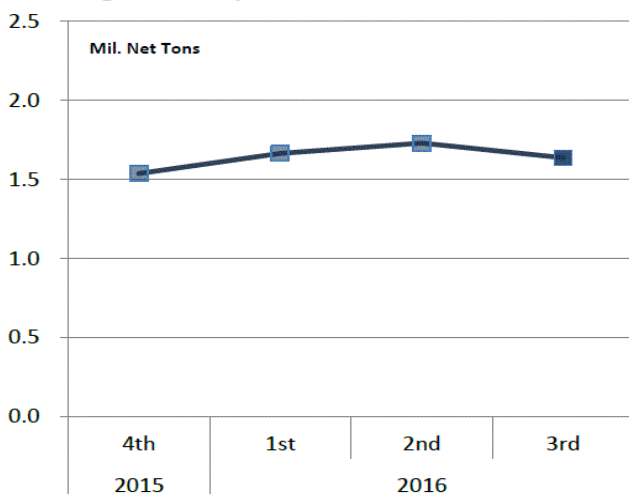
ESTIMATED WEEKLY RAW STEEL * PRODUCTION

<u>Period</u>	<u>Thousand Net Tons</u>	<u>Percent Change from Previous Period</u>	<u>Percent Capability Utilization**</u>	<u>Production by District</u>		
				<u>Week Ending</u>		
				<u>Jan 21</u>	<u>Jan. 14</u>	
<u>Week Ending</u>				North East	205	216
				Great Lakes	648	667
January 21, 2017	1,703	-0.8	71.8	Midwest	160	165
January 21, 2016	1,607	6.0	68.7	Southern	616	600
January 14, 2017	1,716	1.9	72.3	Western	74	68
				Total	1,703	1,716
<u>Year-to-Date +</u>						
January 21, 2017	5,103	5.8	71.7			
January 21, 2016	4,821	-	68.7			

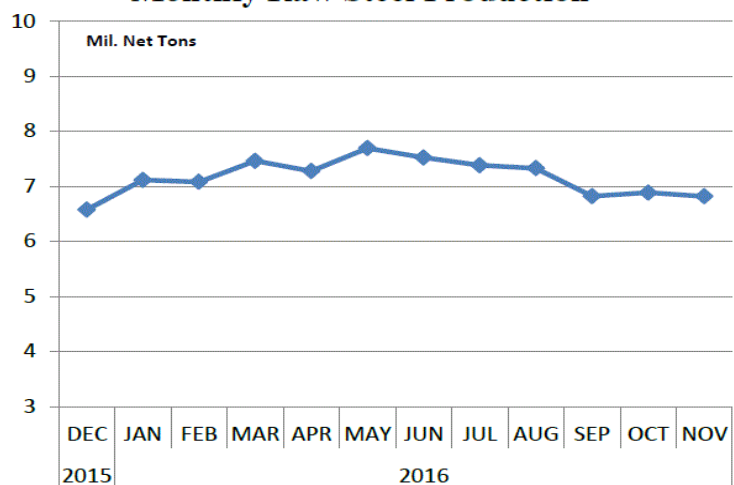
*Raw steel production tonnage included in this report is estimated based on a sampling of steel producers (50% of domestic producers). Therefore, this report should be used primarily to assess production trends. The AISI production report "AIS 7," produced monthly and available by subscription, provides a more accurate summary of steel production based on data supplied by companies representing approximately 75% of U.S. production capacity plus includes revisions for previous months.

NOTE: Capability for the fourth quarter 2016 is approximately 31.2 million net tons vs. 31.4 million net tons for the same period last year, and 30.7 million tons for the third quarter of 2016.

Average Weekly Raw Steel Production



Monthly Raw Steel Production



*Steel in the first solid state after melting suitable for further processing or sale, including ingots, steel for castings and strand or pressure cast blooms, slabs or other product forms. ** Based on tonnage capability to produce raw steel for a sustained full order book.



Source: Kitco website - www.kitco.com/connecting.html

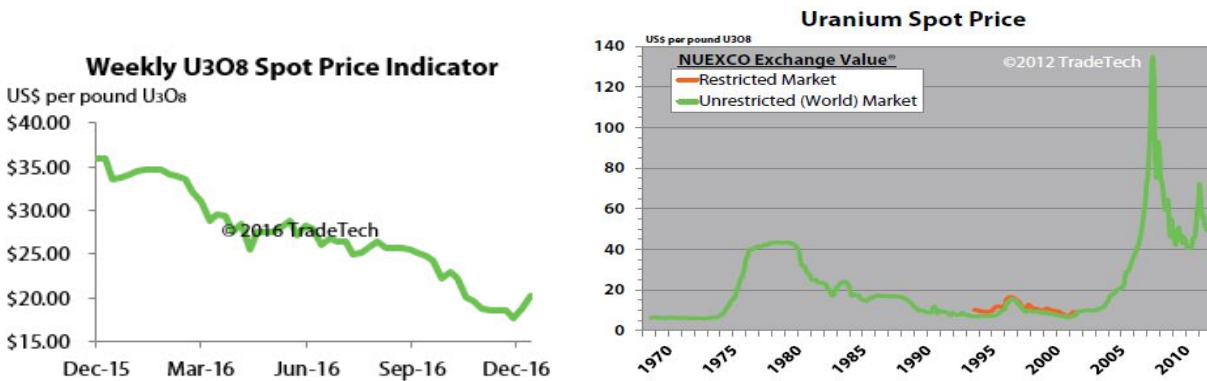


Source: Kitco website - www.kitco.com/connecting.html

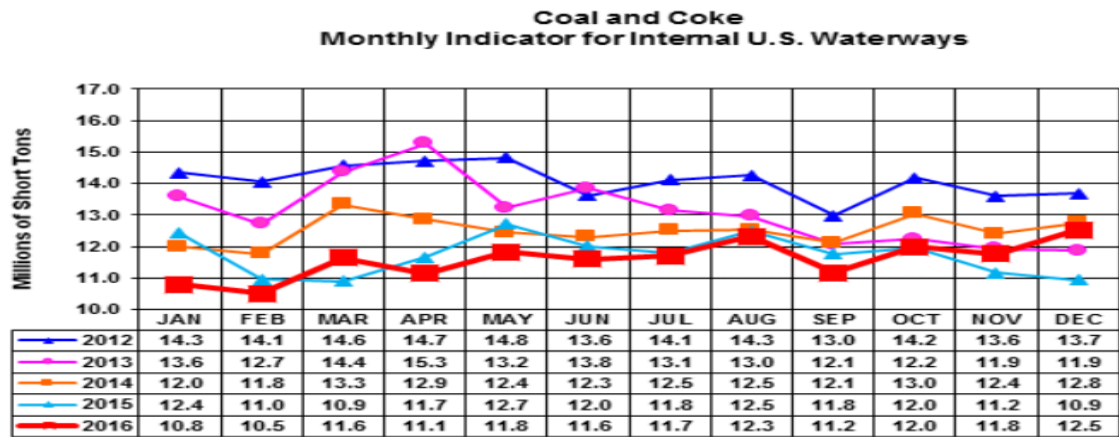


Source: Kitco website - www.kitco.com/connecting.html

Trade Tech's Uranium Price Indicators

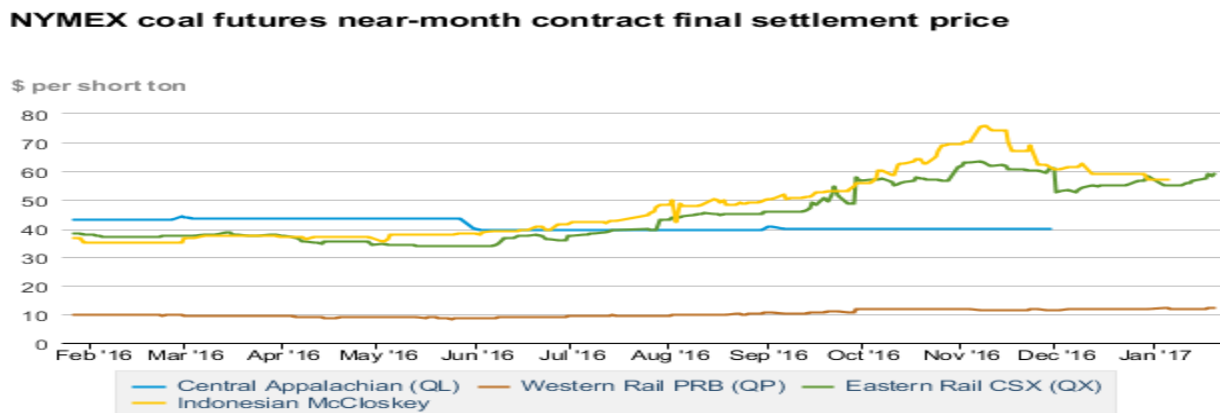


Source: Trade Tech, Uranium Info Website – www.uranium.info



Source: U.S. Army Corps of Engineers, Waterborne Commerce Statistics Center

NYMEX Coal Futures Near-month Contract Final Settlement Price



Source: The New York Mercantile Exchange (NYMEX), Daily Energy Bulletin.

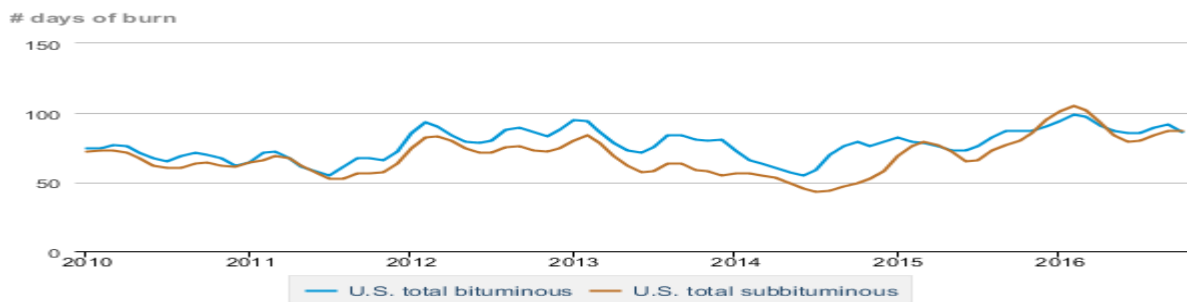
Source: Energy Information Administration, based on NYMEX and Daily Energy Bulletin data

Average weekly coal commodity spot prices dollars per short ton

	Week ending					Week ago change
	12/23/16	12/30/16	01/06/17	01/13/17	01/20/17	
Central Appalachia 12,500 Btu, 1.2 SO ₂	\$48.05	\$48.05	\$46.50	\$46.50	\$50.00	\$3.50
Northern Appalachia 13,000 Btu, < 3.0 SO ₂	\$45.75	\$45.75	\$44.30	\$44.30	\$45.75	\$1.45
Illinois Basin 11,800 Btu, 5.0 SO ₂	\$34.50	\$34.50	\$35.00	\$35.00	\$35.00	\$0.00
Powder River Basin 8,800 Btu, 0.8 SO ₂	\$11.00	\$11.00	\$11.05	\$11.05	\$11.80	\$0.75
Uinta Basin 11,700 Btu, 0.8 SO ₂	\$40.90	\$40.90	\$41.10	\$41.10	\$41.10	\$0.00

Source: Energy Information Administration (with permission from SNL), *Coal News and Markets Report*

Days of burn by non-lignite coal rank, January 2009 - October 2016



Source: U.S. Energy Information Administration

Source: Energy Information Administration, *Electricity Monthly Update Report*

Temperature -- heating & cooling degree days (week ending Jan 12)						
Region	HDD Current	HDD deviation from:		CDD Current	CDD deviation from:	
		normal	last year		normal	last year
New England	274	2	46	0	0	0
Middle Atlantic	262	2	39	0	0	0
E N Central	299	4	37	0	0	0
W N Central	337	19	28	0	0	0
South Atlantic	204	21	35	5	-3	-1
E S Central	196	7	18	1	-1	1
W S Central	137	-5	2	9	6	9
Mountain	230	-6	-13	0	0	0
Pacific	125	1	-8	0	0	0
United States	230	5	21	2	0	1

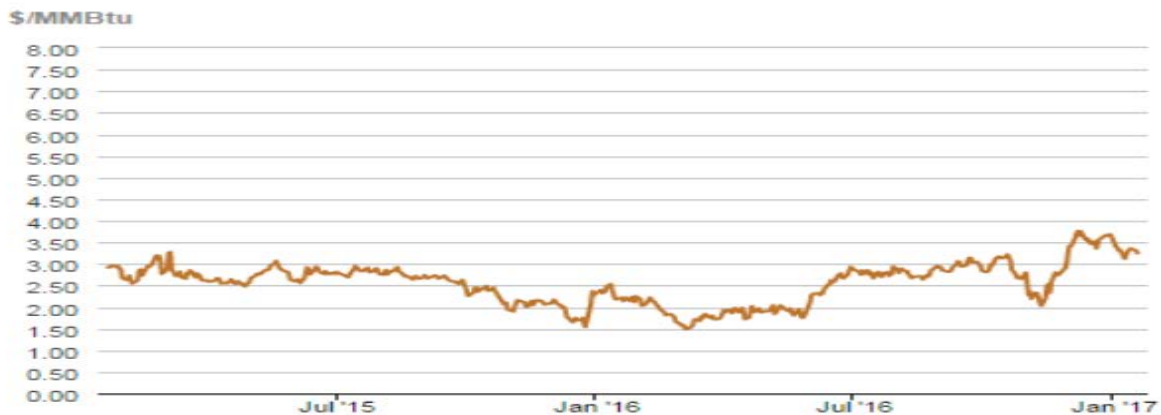
Note: HDD = heating degree day; CDD = cooling degree day
Source: National Oceanic and Atmospheric Administration

Source: Energy Information Administration

USGS Production of Selected Mineral Commodities	2016 Year to Date - 3rd Quarter	2015 Year to Date - 3rd Quarter	Percent Change
Aluminum, secondary (000 Mt.)	673.0	556.0	21%
Cement (Mil. Mt.)	62.3	61.1	2%
Copper (000 Mt.)	1,080.0	1,040.0	4%
Gold (Mt.)	157.0	157.0	0%
Gypsum (Mil. Mt.)	12.4	11.3	10%
Iron Ore (Mil. Mt.)	29.3	32.8	-11%
Lead (000 Mt.)	260.0	277.0	-6%
Molybdenum (000 Mt.)	26.1	40.1	-35%
Phosphate rock (Mil. Mt.)	20.2	20.8	-3%
Sand & gravel, construction (Mil. Mt.)	732.0	703.0	4%
Silver (Mt.)	853.0	814.0	5%
Soda ash (Mil. Mt.)	8.8	8.7	1%
Stone, crushed (Mil. Mt.)	1,050.0	990.0	6%
Zinc (000 Mt.)	597.0	604.0	-1%

Source: U.S. Geological Survey, Mineral Industry Surveys. Percent change based on USGS rounded numbers. 2016 data are preliminary estimates.

Natural gas spot prices (Henry Hub)



eia Source: Natural Gas Intelligence

Source: Energy Information Administration, *Natural Gas Weekly Update*

EIA Coal Stocks and Average Number of Days of Burn (Power Sector)

Coal stocks and average number of days of burn for non-lignite coal by region (electric power sector)

Zone	Coal	October 2016		October 2015		% Change of Stocks	September 2016		% Change of Stocks
		Stocks (1000 tons)	Days of Burn	Stocks (1000 tons)	Days of Burn		Stocks (1000 tons)	Days of Burn	
Northeast	Bituminous	5,646	84	7,509	95	-24.8%	5,487	95	2.9%
	Subbituminous	136	69	731	174	-81.4%	136	97	0.0%
South	Bituminous	27,996	83	34,879	89	-19.7%	27,339	88	2.4%
	Subbituminous	6,039	73	6,946	76	-13.1%	5,631	68	7.2%
Midwest	Bituminous	16,909	94	16,311	82	3.7%	16,549	99	2.2%
	Subbituminous	43,096	84	41,629	71	3.5%	40,862	84	5.5%
West	Bituminous	5,859	84	5,628	75	4.1%	5,885	84	-0.5%
	Subbituminous	31,312	95	34,905	94	-10.3%	30,830	95	1.6%
U.S. Total	Bituminous	56,410	86	64,328	87	-12.3%	55,260	92	2.1%
	Subbituminous	80,583	87	84,211	80	-4.3%	77,459	87	4.0%

Source: Energy Information Administration, *Electricity Monthly Update*

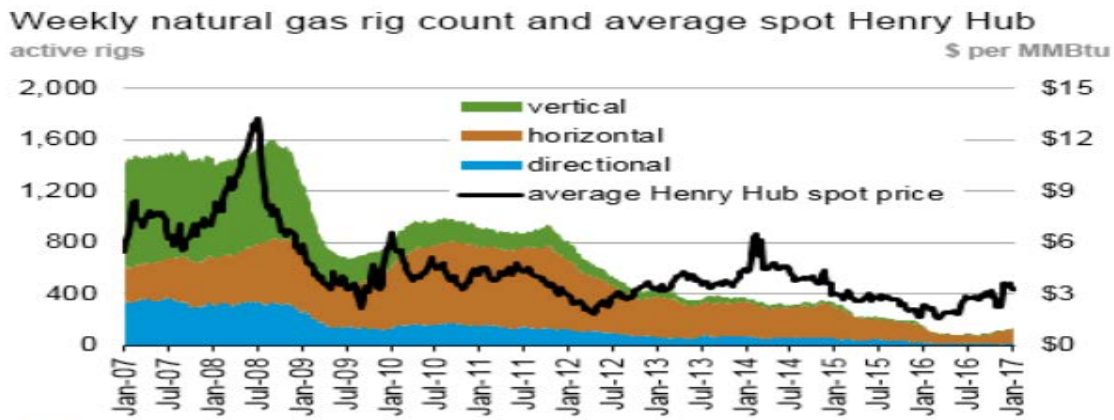
EIA Working Natural Gas Underground Storage

Region	Stocks billion cubic feet (Bcf)		
	2017-01-13	2017-01-06	change
East	639	698	-59
Midwest	795	865	-70
Mountain	183	197	-14
Pacific	248	263	-15
South Central	1,052	1,137	-85
Total	2,917	3,160	-243

Source: U.S. Energy Information Administration

Source: Energy Information Administration, *Natural Gas Weekly Update*

EIA Natural Gas Rig Count and Price Trend



Source: Baker Hughes

Source: Energy Information Administration, *Natural Gas Weekly Update*

EIA Oil and Natural Gas Rig Productivity

Region	New-well oil production per rig barrels/day			New-well gas production per rig thousand cubic feet/day		
	January 2017	February 2017	change	January 2017	February 2017	change
Bakken	968	990	22	1,366	1,415	49
Eagle Ford	1,395	1,417	22	4,033	4,129	96
Haynesville	30	30	-	6,838	7,011	173
Marcellus	69	69	-	12,681	12,867	186
Niobrara	1,251	1,280	29	4,030	4,146	116
Permian	652	660	8	1,087	1,097	10
Utica	118	108	(10)	8,672	8,722	50
Rig-weighted average	682	697	15	3,312	3,400	88

Source: Energy Information Administration, *Drilling Productivity Report*