

National Mining Association

Weekly Statistical Summary

February 3, 2017 Edition
(Data for Week Ending January 28, 2017)

Prepared by
National Mining Association



Suite 500 East, 101 Constitution Avenue, NW
Washington, DC, 20001
Phone (202) 463-2600
Visit us at <http://www.nma.org>

NMA Weekly Statistical Summary

Vol. 55, No. 4
Dated 02/03/17

PRODUCTION, CONSUMPTION & TRADE

	Week Ended			* Cumulative Jan 1 to		
	01/28/17	01/23/16	% Chng	01/28/17	01/28/16	% Chng
EIA Coal Production (000 Tons):						
Week Ended/Year to Date	16,099	13,683	17.7%	62,350	54,875	13.6%
52 Weeks Ended	756,424	875,389	-13.6%			
AAR Coal Rail Cars Loaded:	87,208	74,128	17.6%	337,751	297,737	13.4%
Coal Production	Dec 16/15		% Chng	Jan - Dec 16/15		% Chng
Month Ended - Dec.	66,123	63,001	5.0%	738,661	896,977	-17.6%
DOC Coal Trade (000 Tons)						
Exports:	November 16/15		% Chng	Jan - Nov 16/15		% Chng
Metallurgical	3,844	2,859	34.5%	36,292	42,870	-15.3%
Steam *	2,670	1,806	47.8%	15,636	25,887	-39.6%
Lignite	6	6	0.0%	64	58	10.3%
Anthracite	38	40	-5.0%	397	332	19.6%
Total	6,558	4,711	39.2%	52,389	69,147	-24.2%
Imports:	706	882	-20.0%	9,197	10,349	-11.1%
	Week Ended			Cumulative Week 1 to		
	01/28/17	01/30/16	% Chng	01/28/17	01/30/16	% Chng
EEl Electric Total Output (Mil. Kwh)	75,253	77,913	-3.4%	311,353	320,273	-2.8%
EEl Coal Region Output (Mil. Kwh)	63,945	67,242	-4.9%	264,589	275,964	-4.1%
AISI Raw Steel Output (000 Tons)	1,736	1,607	8.0%	6,839	6,428	6.4%

EIA (SNL ENERGY) AVERAGE COAL & NATURAL GAS SPOT PRICES Dollars Per Short Ton

Average Coal Spot Prices (\$/Short Ton)	Week Ending			Natural Gas Spot Prices (\$/MMBtu)	
	01/27/17	01/20/17	% Chng	Wed.	01/25/17
Central App, 12,500 Btu, 1.2 SO ₂	\$50.00	\$50.00	0.0%	Henry Hub	3.25
Northern App, 13,000 Btu, < 3.0 SO ₂	45.75	45.75	0.0%	New York	3.18
Illinois Basin, 11,800, 5.0 SO ₂	35.00	35.00	0.0%	Chicago	3.22
Powder River Basin, 8,800 Btu 0.8 SO ₂	11.80	11.80	0.0%	Cal.Comp.Avg.	3.46
Uinta Basin, 11,700 Btu, 0.8 SO ₂	41.10	41.10	0.0%		

Coal exports and Imports are "as reported" (not revised); *Steam excludes lignite & anthracite. All data in this report are preliminary and subject to revision.

Sources: Energy Information Administration; Edison Electric Institute; American Iron & Steel Institute; Association of American Railroads; Dept. of Commerce; SNL Energy; NGI's Daily Gas Price Index



NMA
THE AMERICAN RESOURCE

National Mining Association Web Site: [http:// www.nma.org](http://www.nma.org)

EIA Estimated Weekly U.S. Coal Production Overview									
	Week Ended			Year to Date			52 Weeks Ended		
Coal-Producing Region & State	1/28/2017	1/21/2017	1/23/2016	1/28/2017	1/28/2016	% Change	1/28/2017	1/23/2016	% Change
(thousand short tons)	(week 4)	(week 3)	(week 4)						
Alabama	186	191	193	716	776	-7.7	8,921	12,704	-29.8
Alaska	26	29	24	105	98	6.6	1,095	1,184	-7.5
Arizona	117	121	106	453	423	7.0	5,548	6,666	-16.8
Arkansas	1	1	1	4	4	11.9	45	88	-48.9
Colorado	219	214	196	816	787	3.6	11,590	18,070	-35.9
Illinois	1,005	1,046	895	3,920	3,591	9.2	46,159	54,505	-15.3
Indiana	673	687	571	2,589	2,291	13.0	30,092	33,553	-10.3
Kansas	2	3	2	10	8	17.5	72	191	-62.3
Kentucky Total	908	959	897	3,554	3,598	-1.2	44,427	59,709	-25.6
Eastern (KY)	334	357	362	1,313	1,453	-9.7	17,420	27,133	-35.8
Western (KY)	574	602	535	2,242	2,145	4.5	27,008	32,576	-17.1
Louisiana	63	64	52	240	208	15.1	2,924	3,399	-14.0
Maryland	30	32	28	118	114	3.4	1,513	1,861	-18.7
Mississippi	64	68	61	255	244	4.3	2,978	3,127	-4.8
Missouri	6	5	3	21	13	62.5	219	138	58.7
Montana	623	672	587	2,462	2,356	4.5	32,427	40,771	-20.5
New Mexico	330	332	340	1,223	1,362	-10.2	14,847	19,719	-24.7
North Dakota	735	753	570	2,830	2,286	23.8	30,327	28,620	6.0
Ohio	324	342	308	1,274	1,235	3.2	14,445	16,675	-13.4
Oklahoma	16	16	13	61	53	15.0	683	767	-11.0
Pennsylvania Total	1,065	1,059	817	4,026	3,277	22.9	46,527	49,778	-6.5
Anthracite (PA)	40	42	34	154	137	13.0	1,830	2,120	-13.7
Bituminous (PA)	1,026	1,018	783	3,872	3,140	23.3	44,698	47,658	-6.2
Tennessee	17	19	18	71	73	-3.5	796	900	-11.6
Texas	1,088	1,129	784	4,233	3,145	34.6	43,520	36,281	20.0
Utah	360	361	266	1,370	1,066	28.5	14,580	14,294	2.0
Virginia	336	338	252	1,279	1,012	26.3	14,086	14,096	-0.1
West Virginia Total	1,833	1,898	1,523	7,102	6,108	16.3	83,337	93,072	-10.5
Northern (WV)	1,065	1,099	813	4,108	3,262	25.9	46,444	46,757	-0.7
Southern (WV)	768	799	710	2,994	2,846	5.2	36,893	46,315	-20.3
Wyoming	6,070	6,419	5,172	23,617	20,744	13.9	305,265	365,219	-16.4
Appalachian Total	4,126	4,236	3,503	15,899	14,049	13.2	187,046	216,220	-13.5
Interior Total	3,493	3,623	2,918	13,575	11,702	16.0	153,700	164,627	-6.6
Western Total	8,481	8,901	7,262	32,875	29,123	12.9	415,679	494,543	-15.9
East of Mississippi River	6,441	6,641	5,566	24,905	22,320	11.6	293,282	339,981	-13.7
West of Mississippi River	9,657	10,119	8,117	37,444	32,555	15.0	463,142	535,408	-13.5
Bituminous and Lignite	16,059	16,718	13,649	62,195	54,738	13.6	754,595	873,269	-13.6
Anthracite	40	42	34	154	137	13.0	1,830	2,120	-13.7
U.S. Total	16,099	16,759	13,683	62,350	54,875	13.6	756,424	875,389	-13.6
Railroad Cars Loaded	87,208	90,786	74,128	337,751	297,737	13.4	4,210,052	5,017,166	-16.1

Source: Energy Information Administration

Prepared by EEI's Business Information Group

EEI
WEEKLY ELECTRIC OUTPUT

Volume 85 No. 4

OUTPUT FOR WEEK ENDED - Jan 28, 2017

Feb 01, 2017

The net available amount of electric energy distributed by the Total Electric Utility Industry* for the week ended Saturday, **Jan 28, 2017** was **75,253** gigawatthours (GWh), according to the Edison Electric Institute. This is equivalent to **167** on the weekly electric output index.

WEEKLY ELECTRIC OUTPUT BY GEOGRAPHIC DIVISION

(48 CONTIGUOUS STATES)

	Week Ended January 28		52 Weeks Ended January 28	
	GWh Output	% Increase Over Corresponding Week of 2016	GWh Output	% Increase Over Corresponding Period of 2016
New England	2,347	-4.0	123,586	-2.0
Mid-Atlantic	8,191	-5.5	434,726	-1.5
Central Industrial	12,738	-4.4	674,296	0.4
West Central	6,347	-2.0	329,986	0.1
Southeast	18,618	-10.8	1,025,295	0.4
South Central	12,347	-2.2	715,595	1.3
Rocky Mountain	5,704	8.4	276,003	-0.5
Pacific Northwest	3,660	10.7	154,310	1.1
Pacific Southwest	5,301	7.7	283,676	-0.5
Total United States	75,253	-3.4	4,017,473	0.1

WEEKLY ELECTRIC OUTPUT IN PREVIOUS WEEKS--GWh

Week Ended	2017	Week Ended	2016	% Inc. (17/16)	52 Weeks Ended	2017	% Inc. (17/16)
Jan 07	81,914	Jan 09	79,219	3.4	Jan 07	4,029,088	0.5
Jan 14	80,521	Jan 16	79,650	1.1	Jan 14	4,029,959	0.6
Jan 21	73,665	Jan 23	83,491	-11.8	Jan 21	4,020,133	0.2
Jan 28	75,253	Jan 30	77,913	-3.4	Jan 28	4,017,473	0.1
Jan 28	311,353	Jan 30	320,273	-2.8	YEAR TO DATE, FIRST 4 WEEKS		

WEEKLY ELECTRIC OUTPUT INDEX--TOTAL U.S.*

SEASONALLY ADJUSTED 1982 = 100

Week Ended	2017	Week Ended	2016	Week Ended	2015
Jan 07	188	Jan 09	181	Jan 10	197
Jan 14	177	Jan 16	182	Jan 17	188
Jan 21	161	Jan 23	193	Jan 24	177
Jan 28	167	Jan 30	176	Jan 31	176

* Excludes Alaska and Hawaii.

+ Includes investor-owned companies, cooperatives and government-owned utilities.

Copyright © 2017 Edison Electric Institute. All rights reserved.

**EEl WEEKLY ELECTRIC OUTPUT BY GEOGRAPHIC DIVISION
(48 CONTIGUOUS STATES)**

	Week Ended			NMA CUMULATIVE JANUARY WEEK ONE TO			52 Weeks Ended		
	28-Jan 2017 GWh Output	30-Jan 2016 GWh Output	% Increase Over Corresponding Week of 2016	28-Jan 2017 GWh Output	30-Jan 2016 GWh Output	% Increase Over Corresponding Week of 2016	28-Jan 2017 GWh Output	30-Jan 2016 GWh Output	% Increase Over Corresponding Week of 2016
New England	2,347	2,444	-4.0%	9,686	10,073	-3.8%	123,586	126,125	-2.0%
Mid-Atlantic	8,191	8,668	-5.5%	33,828	35,183	-3.9%	434,726	441,411	-1.5%
Central Industrial	12,738	13,330	-4.4%	53,370	55,907	-4.5%	674,296	671,877	0.4%
West Central	6,347	6,477	-2.0%	25,933	26,701	-2.9%	329,986	329,713	0.1%
Southeast	18,618	20,882	-10.8%	77,892	84,561	-7.9%	1,025,295	1,020,977	0.4%
South Central	12,347	12,622	-2.2%	51,057	51,796	-1.4%	715,595	706,730	1.3%
Rocky Mountain	5,704	5,263	8.4%	22,509	21,816	3.2%	276,003	277,330	-0.5%
Pacific Northwest	3,660	3,306	10.7%	16,332	14,247	14.6%	154,310	152,591	1.1%
Pacific Southwest	5,301	4,921	7.7%	20,746	19,989	3.8%	283,676	285,099	-0.5%
Total United States ^{1/}	75,253	77,913	-3.4%	311,353	320,273	-2.8%	4,017,473	4,011,853	0.1%
Coal Regions Only ^{2/}	63,945	67,242	-4.9%	264,589	275,964	-4.1%	3,455,901	3,448,038	0.2%

Notes: EEl output data are an estimate of electricity load made available for distribution derived as weekly net generation + purchases from non-utilities + net imports - exports - sales for resale. It is not meant to be a measure of electricity generation for the U.S. EEl survey data represent the majority of national distribution (large utilities, large government power projects, some independent and large municipal power projects). The remaining segment of the industry (smaller producers) is estimated. Non-utility generation is captured via direct sales to utilities.

^{1/} Excludes Alaska and Hawaii

^{2/} Excludes New England and Pacific regions

SOURCE: Edison Electric Institute (EEl), *Weekly Electric Output Report*.

AMERICAN IRON AND STEEL INSTITUTE
 25 Massachusetts Avenue, NW, Suite 800
 Washington, D.C. 20001

January 30, 2017

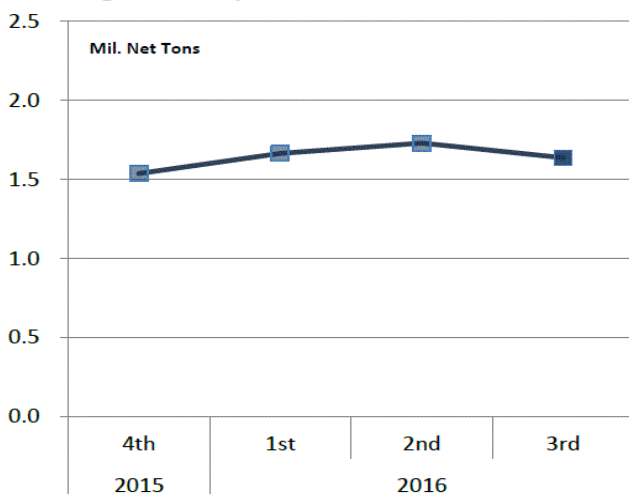
ESTIMATED WEEKLY RAW STEEL * PRODUCTION

<u>Period</u>	<u>Thousand Net Tons</u>	<u>Percent Change from Previous Period</u>	<u>Percent Capability Utilization**</u>	<u>Production by District</u>		
				<u>Week Ending</u>		
				<u>Jan 28</u>	<u>Jan. 21</u>	
<u>Week Ending</u>				North East	216	205
				Great Lakes	665	648
January 28, 2017	1,736	1.9	73.2	Midwest	159	160
January 28, 2016	1,607	8.0	68.7	Southern	627	616
January 21, 2017	1,703	-0.8	71.8	Western	69	74
				Total	1,736	1,703
<u>Year-to-Date +</u>						
January 28, 2017	6,839	6.4	72.1			
January 28, 2016	6,428	-	68.7			

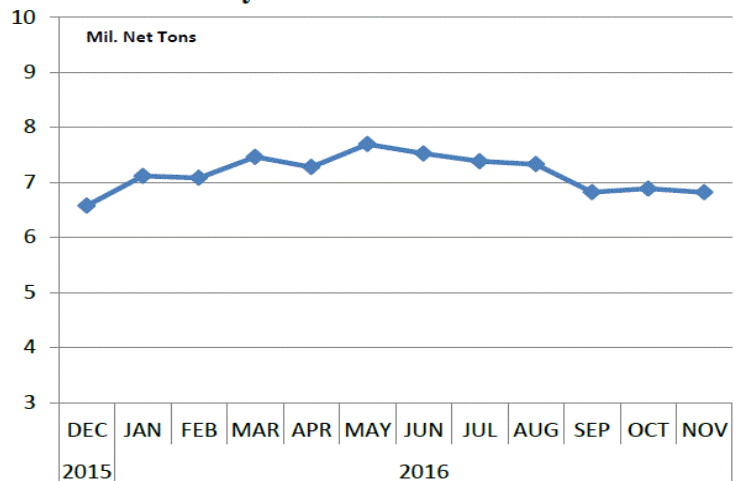
*Raw steel production tonnage included in this report is estimated based on a sampling of steel producers (50% of domestic producers). Therefore, this report should be used primarily to assess production trends. The AISI production report "AIS 7," produced monthly and available by subscription, provides a more accurate summary of steel production based on data supplied by companies representing approximately 75% of U.S. production capacity plus includes revisions for previous months.

NOTE: Capability for the fourth quarter 2016 is approximately 31.2 million net tons vs. 31.4 million net tons for the same period last year, and 30.7 million tons for the third quarter of 2016.

Average Weekly Raw Steel Production



Monthly Raw Steel Production



*Steel in the first solid state after melting suitable for further processing or sale, including ingots, steel for castings and strand or pressure cast blooms, slabs or other product forms. ** Based on tonnage capability to produce raw steel for a sustained full order book.



Source: Kitco website - www.kitco.com/connecting.html

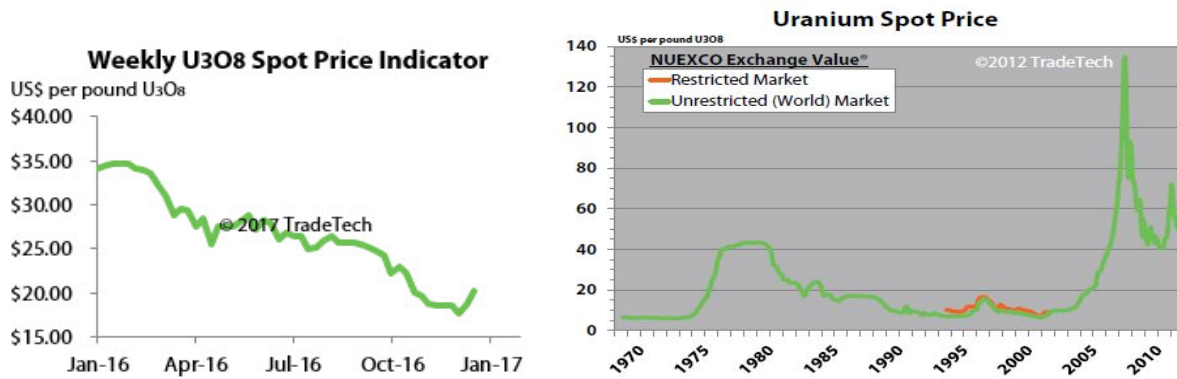


Source: Kitco website - www.kitco.com/connecting.html

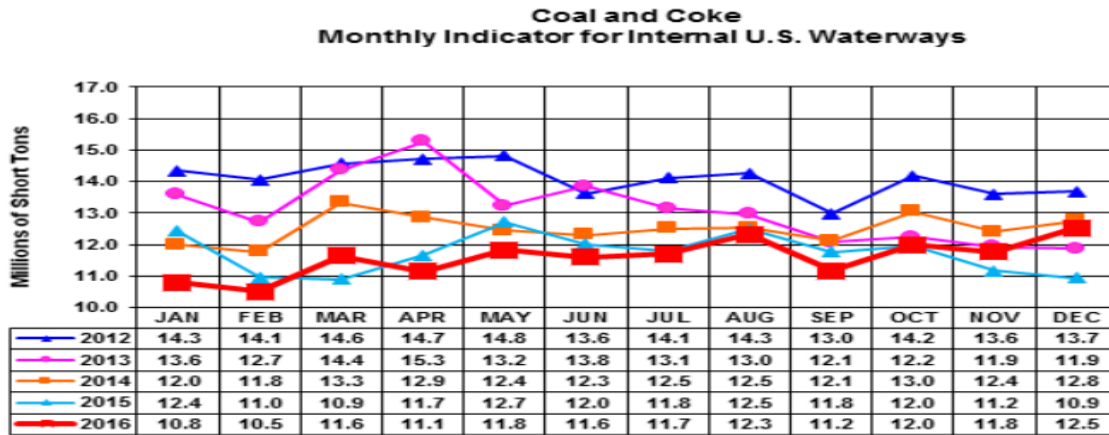


Source: Kitco website - www.kitco.com/connecting.html

Trade Tech's Uranium Price Indicators

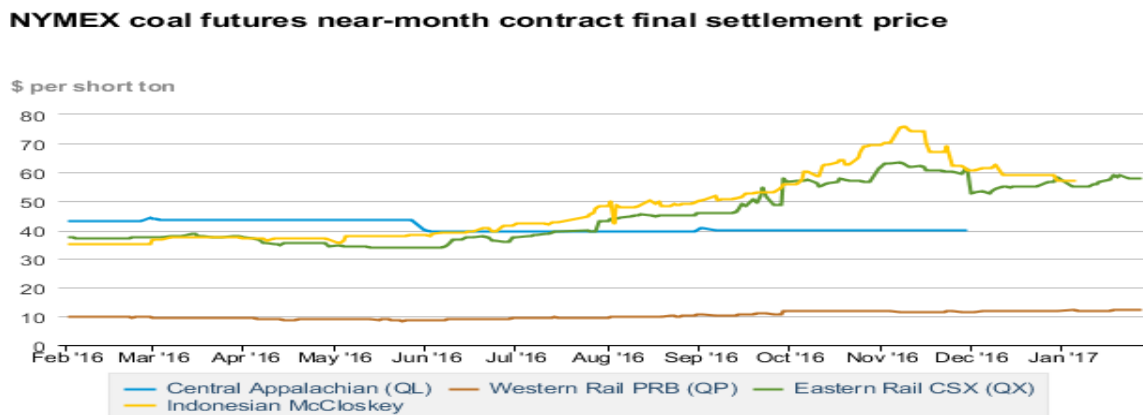


Source: Trade Tech, Uranium Info Website – www.uranium.info



Source: U.S. Army Corps of Engineers, Waterborne Commerce Statistics Center

NYMEX Coal Futures Near-month Contract Final Settlement Price



Source: The New York Mercantile Exchange (NYMEX), Daily Energy Bulletin.

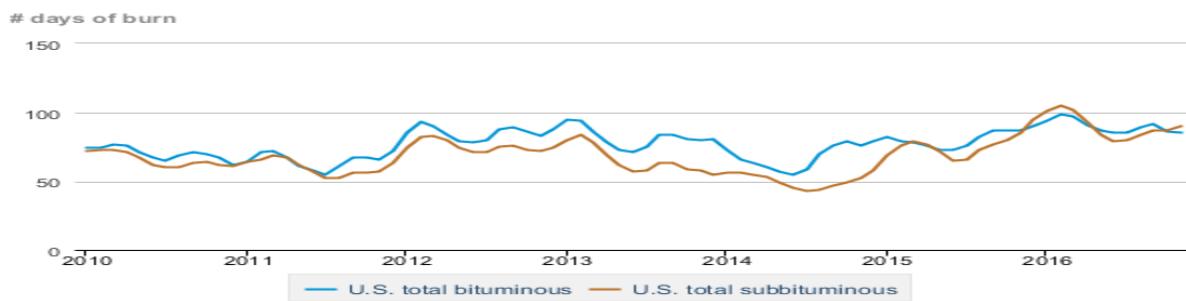
Source: Energy Information Administration, based on NYMEX and Daily Energy Bulletin data

Average weekly coal commodity spot prices *dollars per short ton*

	Week ending					Week ago change
	12/30/16	01/06/17	01/13/17	01/20/17	01/27/17	
Central Appalachia <i>12,500 Btu, 1.2 SO₂</i>	\$48.05	\$46.50	\$46.50	\$50.00	\$50.00	\$0.00
Northern Appalachia <i>13,000 Btu, < 3.0 SO₂</i>	\$45.75	\$44.30	\$44.30	\$45.75	\$45.75	\$0.00
Illinois Basin <i>11,800 Btu, 5.0 SO₂</i>	\$34.50	\$35.00	\$35.00	\$35.00	\$35.00	\$0.00
Powder River Basin <i>8,800 Btu, 0.8 SO₂</i>	\$11.00	\$11.05	\$11.05	\$11.80	\$11.80	\$0.00
Uinta Basin <i>11,700 Btu, 0.8 SO₂</i>	\$40.90	\$41.10	\$41.10	\$41.10	\$41.10	\$0.00

Source: Energy Information Administration (with permission from SNL), *Coal News and Markets Report*

Days of burn by non-lignite coal rank, January 2009 - November 2016



Source: U.S. Energy Information Administration

Source: Energy Information Administration, *Electricity Monthly Update Report*

Region	Temperature -- heating & cooling degree days (week ending Jan 19)					
	HDD Current	HDD deviation from:		CDD Current	CDD deviation from:	
		normal	last year		normal	last year
New England	228	-47	-36	0	0	0
Middle Atlantic	209	-53	-48	0	0	0
E N Central	233	-64	-85	0	0	0
W N Central	267	-51	-78	0	0	0
South Atlantic	93	-90	-103	12	4	9
E S Central	74	-115	-134	0	-2	0
W S Central	70	-70	-58	7	3	7
Mountain	223	-11	2	0	0	0
Pacific	138	17	31	0	-1	0
United States	177	-49	-52	3	1	3

Note: HDD = heating degree day; CDD = cooling degree day
Source: National Oceanic and Atmospheric Administration

Source: Energy Information Administration

USGS Production of Selected Mineral Commodities	2016 Year to Date - 3rd Quarter	2015 Year to Date - 3rd Quarter	Percent Change
Aluminum, secondary (000 Mt.)	673.0	556.0	21%
Cement (Mil. Mt.)	62.3	61.1	2%
Copper (000 Mt.)	1,080.0	1,040.0	4%
Gold (Mt.)	157.0	157.0	0%
Gypsum (Mil. Mt.)	12.4	11.3	10%
Iron Ore (Mil. Mt.)	29.3	32.8	-11%
Lead (000 Mt.)	260.0	277.0	-6%
Molybdenum (000 Mt.)	26.1	40.1	-35%
Phosphate rock (Mil. Mt.)	20.2	20.8	-3%
Sand & gravel, construction (Mil. Mt.)	732.0	703.0	4%
Silver (Mt.)	853.0	814.0	5%
Soda ash (Mil. Mt.)	8.8	8.7	1%
Stone, crushed (Mil. Mt.)	1,050.0	990.0	6%
Zinc (000 Mt.)	597.0	604.0	-1%

Source: U.S. Geological Survey, Mineral Industry Surveys. Percent change based on USGS rounded numbers. 2016 data are preliminary estimates.

Natural gas spot prices (Henry Hub)



eia Source: Natural Gas Intelligence

Source: Energy Information Administration, *Natural Gas Weekly Update*

EIA Coal Stocks and Average Number of Days of Burn (Power Sector)

Coal stocks and average number of days of burn for non-lignite coal by region (electric power sector)

Zone	Coal	November 2016		November 2015			October 2016		
		Stocks (1000 tons)	Days of Burn	Stocks (1000 tons)	Days of Burn	% Change of Stocks	Stocks (1000 tons)	Days of Burn	% Change of Stocks
Northeast	Bituminous	5,891	77	8,032	89	-26.6%	5,646	84	4.3%
	Subbituminous	153	63	708	147	-78.4%	136	69	11.9%
South	Bituminous	30,741	82	37,019	91	-17.0%	27,996	83	9.8%
	Subbituminous	6,491	75	7,584	84	-14.4%	6,039	73	7.5%
Midwest	Bituminous	17,154	90	17,550	82	-2.3%	16,909	94	1.4%
	Subbituminous	45,254	85	45,375	74	-0.3%	43,096	84	5.0%
West	Bituminous	6,099	93	5,785	78	5.4%	5,859	84	4.1%
	Subbituminous	34,098	102	39,044	104	-12.7%	31,312	95	8.9%
U.S. Total	Bituminous	59,885	85	68,386	87	-12.4%	56,410	86	6.2%
	Subbituminous	85,996	90	92,710	85	-7.2%	80,583	87	6.7%

Source: Energy Information Administration, *Electricity Monthly Update*

EIA Working Natural Gas Underground Storage

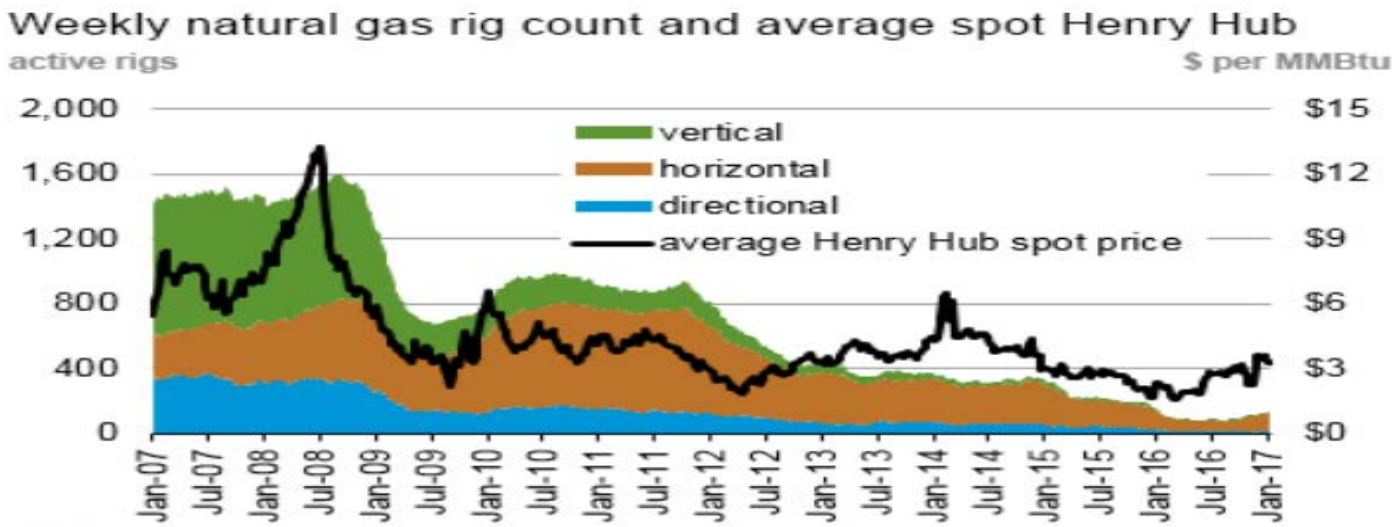
Working gas in underground storage

Region	Stocks billion cubic feet (Bcf)		
	2017-01-20	2017-01-13	change
East	596	639	-43
Midwest	757	795	-38
Mountain	173	183	-10
Pacific	235	248	-13
South Central	1,037	1,052	-15
Total	2,798	2,917	-119

Source: U.S. Energy Information Administration

Source: Energy Information Administration, *Natural Gas Weekly Update*

EIA Natural Gas Rig Count and Price Trend



Source: Baker Hughes

Source: Energy Information Administration, *Natural Gas Weekly Update*

EIA Oil and Natural Gas Rig Productivity

Region	New-well oil production per rig barrels/day			New-well gas production per rig thousand cubic feet/day		
	January 2017	February 2017	change	January 2017	February 2017	change
Bakken	968	990	22	1,366	1,415	49
Eagle Ford	1,395	1,417	22	4,033	4,129	96
Haynesville	30	30	-	6,838	7,011	173
Marcellus	69	69	-	12,681	12,867	186
Niobrara	1,251	1,280	29	4,030	4,146	116
Permian	652	660	8	1,087	1,097	10
Utica	118	108	(10)	8,672	8,722	50
Rig-weighted average	682	697	15	3,312	3,400	88

Source: Energy Information Administration, *Drilling Productivity Report*