

National Mining Association

Weekly Statistical Summary

February 10, 2017 Edition
(Data for Week Ending February 4, 2017)

Prepared by
National Mining Association



Suite 500 East, 101 Constitution Avenue, NW
Washington, DC, 20001
Phone (202) 463-2600
Visit us at <http://www.nma.org>

NMA Weekly Statistical Summary

Vol. 55, No. 5
Dated 02/10/17

PRODUCTION, CONSUMPTION & TRADE

	Week Ended			* Cumulative Jan 1 to		
	02/04/17	01/30/16	% Chng	02/04/17	02/04/16	% Chng
EIA Coal Production (000 Tons):						
Week Ended/Year to Date	17,024	14,290	19.1%	79,374	68,618	15.7%
52 Weeks Ended	759,159	869,220	-12.7%			
AAR Coal Rail Cars Loaded:	92,222	77,416	19.1%	429,973	372,196	15.5%
Coal Production	Jan 17/16		% Chng	Jan - Jan 16/17		% Chng
Month Ended - Jan.	69,500	60,500	14.9%	69,500	60,500	14.9%
DOC Coal Trade (000 Tons)						
Exports:	December 16/15		% Chng	Jan - Dec 16/15		% Chng
Metallurgical	4,639	3,136	47.9%	40,930	46,007	-11.0%
Steam *	3,282	1,704	92.6%	18,918	27,591	-31.4%
Lignite	7	5	40.0%	71	63	12.7%
Anthracite	4	4	0.0%	401	336	19.3%
Total	7,932	4,849	63.6%	60,320	73,997	-18.5%
Imports:	652	969	-32.7%	9,850	11,318	-13.0%
	Week Ended			Cumulative Week 1 to		
	02/04/17	02/06/16	% Chng	02/04/17	02/06/16	% Chng
EEl Electric Total Output (Mil. Kwh)	76,896	74,481	3.2%	388,249	394,754	-1.6%
EEl Coal Region Output (Mil. Kwh)	65,450	63,600	2.9%	330,039	339,564	-2.8%
AISI Raw Steel Output (000 Tons)	1,723	1,665	3.5%	8,562	8,094	5.8%

EIA (SNL ENERGY) AVERAGE COAL & NATURAL GAS SPOT PRICES Dollars Per Short Ton

Average Coal Spot Prices (\$/Short Ton)	Week Ending			Natural Gas Spot Prices (\$/MMBtu)	
	02/03/17	01/27/17	% Chng	Wed.	02/01/17
Central App, 12,500 Btu, 1.2 SO ₂	\$50.05	\$50.00	0.1%	Henry Hub	3.12
Northern App, 13,000 Btu, < 3.0 SO ₂	45.80	45.75	0.1%	New York	3.40
Illinois Basin, 11,800, 5.0 SO ₂	31.75	35.00	-9.3%	Chicago	3.08
Powder River Basin, 8,800 Btu 0.8 SO ₂	11.80	11.80	0.0%	Cal.Comp.Avg.	3.16
Uinta Basin, 11,700 Btu, 0.8 SO ₂	41.15	41.10	0.1%		

Coal exports and Imports are "as reported" (not revised); *Steam excludes lignite & anthracite. All data in this report are preliminary and subject to revision.

Sources: Energy Information Administration; Edison Electric Institute; American Iron & Steel Institute; Association of American Railroads; Dept. of Commerce; SNL Energy; NGI's Daily Gas Price Index



NMA
THE AMERICAN RESOURCE

National Mining Association Web Site: [http:// www.nma.org](http://www.nma.org)

EIA Estimated Weekly U.S. Coal Production Overview									
	Week Ended			Year to Date			52 Weeks Ended		
Coal-Producing Region & State (thousand short tons)	2/4/2017 (week 5)	1/28/2017 (week 4)	1/30/2016 (week 5)	2/4/2017	2/4/2016	% Change	2/4/2017	1/30/2016	% Change
Alabama	196	186	202	913	970	-5.9	8,915	12,560	-29.0
Alaska	30	26	26	135	123	9.7	1,099	1,187	-7.4
Arizona	125	117	110	578	529	9.1	5,563	6,626	-16.0
Arkansas	1	1	1	5	4	12.0	45	87	-48.3
Colorado	211	219	205	1,027	984	4.3	11,596	17,827	-35.0
Illinois	1,094	1,005	935	5,014	4,490	11.7	46,318	54,005	-14.2
Indiana	707	673	597	3,296	2,865	15.1	30,202	33,344	-9.4
Kansas	3	2	2	13	11	20.8	73	189	-61.4
Kentucky Total	986	908	937	4,540	4,500	0.9	44,476	59,209	-24.9
Eastern (KY)	364	334	379	1,676	1,817	-7.8	17,405	26,844	-35.2
Western (KY)	622	574	559	2,864	2,682	6.8	27,071	32,364	-16.4
Louisiana	64	63	54	304	260	16.7	2,934	3,388	-13.4
Maryland	33	30	30	151	143	5.9	1,517	1,843	-17.7
Mississippi	73	64	64	328	306	7.3	2,987	3,124	-4.4
Missouri	5	6	3	27	16	61.6	220	138	59.4
Montana	686	623	614	3,148	2,946	6.8	32,499	40,455	-19.7
New Mexico	303	330	355	1,526	1,703	-10.4	14,795	19,744	-25.1
North Dakota	773	735	595	3,603	2,859	26.0	30,504	28,585	6.7
Ohio	358	324	322	1,632	1,544	5.7	14,482	16,573	-12.6
Oklahoma	17	16	14	78	66	16.9	686	764	-10.2
Pennsylvania Total	1,073	1,065	853	5,099	4,098	24.5	46,747	49,470	-5.5
Anthracite (PA)	43	40	36	197	171	15.2	1,836	2,115	-13.2
Bituminous (PA)	1,030	1,026	818	4,902	3,927	24.9	44,911	47,355	-5.2
Tennessee	21	17	19	91	92	-0.2	798	902	-11.5
Texas	1,175	1,088	819	5,408	3,933	37.5	43,876	36,422	20.5
Utah	369	360	278	1,739	1,334	30.4	14,671	14,265	2.8
Virginia	344	336	264	1,623	1,266	28.2	14,167	14,035	0.9
West Virginia Total	1,952	1,833	1,591	9,054	7,638	18.5	83,699	92,335	-9.4
Northern (WV)	1,117	1,065	849	5,225	4,079	28.1	46,712	46,468	0.5
Southern (WV)	835	768	741	3,829	3,559	7.6	36,987	45,867	-19.4
Wyoming	6,427	6,070	5,402	30,044	25,939	15.8	306,291	362,142	-15.4
Appalachian Total	4,341	4,126	3,659	20,240	17,568	15.2	187,728	214,563	-12.5
Interior Total	3,760	3,493	3,047	17,335	14,633	18.5	154,413	163,827	-5.7
Western Total	8,923	8,481	7,584	41,798	36,417	14.8	417,018	490,830	-15.0
East of Mississippi River	6,837	6,441	5,812	31,742	27,910	13.7	294,307	337,400	-12.8
West of Mississippi River	10,188	9,657	8,477	47,632	40,707	17.0	464,852	531,819	-12.6
Bituminous and Lignite	16,982	16,059	14,254	79,177	68,447	15.7	757,322	867,105	-12.7
Anthracite	43	40	36	197	171	15.2	1,836	2,115	-13.2
U.S. Total	17,024	16,099	14,290	79,374	68,618	15.7	759,159	869,220	-12.7
Railroad Cars Loaded	92,222	87,208	77,416	429,973	372,196	15.5	4,224,858	4,977,788	-15.1

Source: Energy Information Administration

Prepared by EEI's Business Information Group



WEEKLY ELECTRIC OUTPUT

Volume 85 No. 5

OUTPUT FOR WEEK ENDED - Feb 04, 2017

Feb 08, 2017

The net available amount of electric energy distributed by the Total Electric Utility Industry* for the week ended Saturday, Feb 04, 2017 was **76,896** gigawatthours (GWh), according to the Edison Electric Institute. This is equivalent to **160** on the weekly electric output index.

WEEKLY ELECTRIC OUTPUT BY GEOGRAPHIC DIVISION

(48 CONTIGUOUS STATES)

	Week Ended February 04		52 Weeks Ended February 04	
	GWh Output	% Increase Over Corresponding Week of 2016	GWh Output	% Increase Over Corresponding Period of 2016
New England	2,456	4.9	123,701	-1.6
Mid-Atlantic	8,582	6.6	435,258	-1.1
Central Industrial	13,310	5.1	674,942	0.7
West Central	6,433	3.9	330,225	0.3
Southeast	19,409	3.4	1,025,927	0.6
South Central	12,309	-0.1	715,587	1.4
Rocky Mountain	5,407	-3.4	275,813	-0.8
Pacific Northwest	3,869	8.7	154,620	1.2
Pacific Southwest	5,121	2.8	283,816	-0.5
Total United States	76,896	3.2	4,019,888	0.3

WEEKLY ELECTRIC OUTPUT IN PREVIOUS WEEKS--GWh

Week Ended	2017	Week Ended	2016	% Inc. (17/16)	52 Weeks Ended	2017	% Inc. (17/16)
Jan 14	80,521	Jan 16	79,650	1.1	Jan 14	4,029,959	0.6
Jan 21	73,665	Jan 23	83,491	-11.8	Jan 21	4,020,133	0.2
Jan 28	75,253	Jan 30	77,913	-3.4	Jan 28	4,017,473	0.1
Feb 04	76,896	Feb 06	74,481	3.2	Feb 04	4,019,888	0.3
Feb 04	388,249	Feb 06	394,754	-1.6	YEAR TO DATE, FIRST 5 WEEKS		

WEEKLY ELECTRIC OUTPUT INDEX--TOTAL U.S.*

SEASONALLY ADJUSTED 1982 = 100

Week Ended	2017	Week Ended	2016	Week Ended	2015
Jan 14	177	Jan 16	182	Jan 17	188
Jan 21	161	Jan 23	193	Jan 24	177
Jan 28	167	Jan 30	176	Jan 31	176
Feb 04	160	Feb 06	167	Feb 07	183

* Excludes Alaska and Hawaii.

+ Includes investor-owned companies, cooperatives and government-owned utilities.

Copyright © 2017 Edison Electric Institute. All rights reserved.

**EEl WEEKLY ELECTRIC OUTPUT BY GEOGRAPHIC DIVISION
(48 CONTIGUOUS STATES)**

	Week Ended			NMA CUMULATIVE JANUARY WEEK ONE TO			52 Weeks Ended		
	4-Feb 2017 GWh Output	6-Feb 2016 GWh Output	% Increase Over Corresponding Week of 2016	4-Feb 2017 GWh Output	6-Feb 2016 GWh Output	% Increase Over Corresponding Week of 2016	4-Feb 2017 GWh Output	6-Feb 2016 GWh Output	% Increase Over Corresponding Week of 2016
New England	2,456	2,340	5.0%	12,142	12,413	-2.2%	123,701	125,702	-1.6%
Mid-Atlantic	8,582	8,051	6.6%	42,410	43,234	-1.9%	435,258	439,997	-1.1%
Central Industrial	13,310	12,665	5.1%	66,680	68,572	-2.8%	674,942	670,539	0.7%
West Central	6,433	6,194	3.9%	32,366	32,895	-1.6%	330,225	329,307	0.3%
Southeast	19,409	18,777	3.4%	97,301	103,338	-5.8%	1,025,927	1,019,788	0.6%
South Central	12,309	12,316	-0.1%	63,366	64,112	-1.2%	715,587	705,948	1.4%
Rocky Mountain	5,407	5,597	-3.4%	27,916	27,413	1.8%	275,813	277,931	-0.8%
Pacific Northwest	3,869	3,559	8.7%	20,201	17,806	13.5%	154,620	152,824	1.2%
Pacific Southwest	5,121	4,982	2.8%	25,867	24,971	3.6%	283,816	285,146	-0.5%
Total United States ^{1/}	<u>76,896</u>	<u>74,481</u>	3.2%	<u>388,249</u>	<u>394,754</u>	-1.6%	4,019,889	4,007,182	0.3%
Coal Regions Only ^{2/}	65,450	63,600	2.9%	330,039	339,564	-2.8%	3,457,752	3,443,510	0.4%

Notes: EEI output data are an estimate of electricity load made available for distribution derived as weekly net generation + purchases from non-utilities + net imports - exports - sales for resale. It is not meant to be a measure of electricity generation for the U.S. EEI survey data represent the majority of national distribution (large utilities, large government power projects, some independent and large municipal power projects). The remaining segment of the industry (smaller producers) is estimated. Non-utility generation is captured via direct sales to utilities.

^{1/} Excludes Alaska and Hawaii

^{2/} Excludes New England and Pacific regions

SOURCE: Edison Electric Institute (EEI), *Weekly Electric Output Report*.

AMERICAN IRON AND STEEL INSTITUTE
 25 Massachusetts Avenue, NW, Suite 800
 Washington, D.C. 20001

February 6, 2017

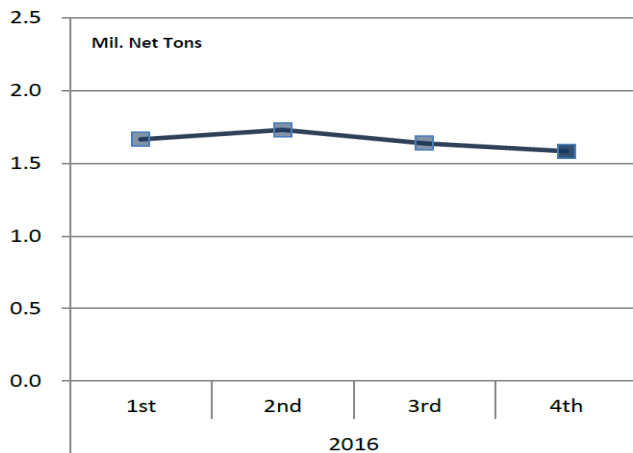
ESTIMATED WEEKLY RAW STEEL * PRODUCTION

<u>Period</u>	<u>Thousand Net Tons</u>	<u>Percent Change from Previous Period</u>	<u>Percent Capability Utilization**</u>	<u>Production by District</u>		
				<u>Week Ending</u>		
				<u>Feb 4</u>	<u>Jan. 28</u>	
<u>Week Ending</u>				North East	216	216
				Great Lakes	648	665
February 4, 2017	1,723	-0.7	72.7	Midwest	163	159
February 4, 2016	1,665	3.5	71.2	Southern	626	627
January 28, 2017	1,736	1.9	73.3	Western	70	69
				Total	1,723	1,736
<u>Year-to-Date +</u>						
February 4, 2017	8,562	5.8	72.2			
February 4, 2016	8,094	-	68.9			

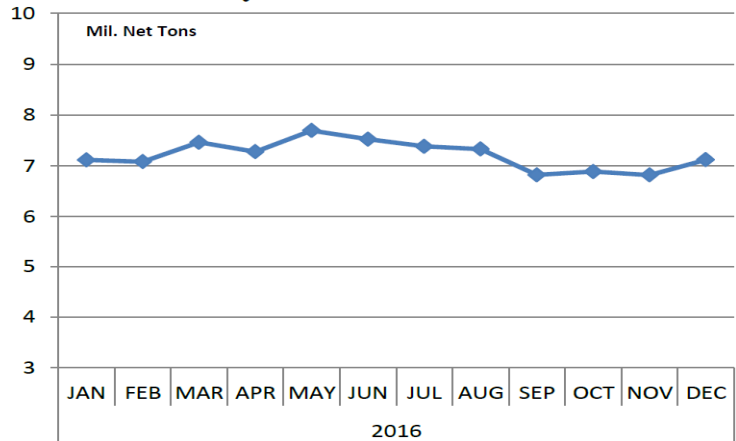
*Raw steel production tonnage included in this report is estimated based on a sampling of steel producers (50% of domestic producers). Therefore, this report should be used primarily to assess production trends. The AISI production report "AIS 7," produced monthly and available by subscription, provides a more accurate summary of steel production based on data supplied by companies representing approximately 75% of U.S. production capacity plus includes revisions for previous months.

NOTE: Capacity for the fourth quarter 2016 is approximately 31.2 million net tons vs. 31.4 million net tons for the same period last year, and 30.7 million tons for the third quarter of 2016.

Average Weekly Raw Steel Production



Monthly Raw Steel Production



*Steel in the first solid state after melting suitable for further processing or sale, including ingots, steel for castings and strand or pressure cast blooms, slabs or other product forms. ** Based on tonnage capability to produce raw steel for a sustained full order book.



Source: Kitco website - www.kitco.com/connecting.html

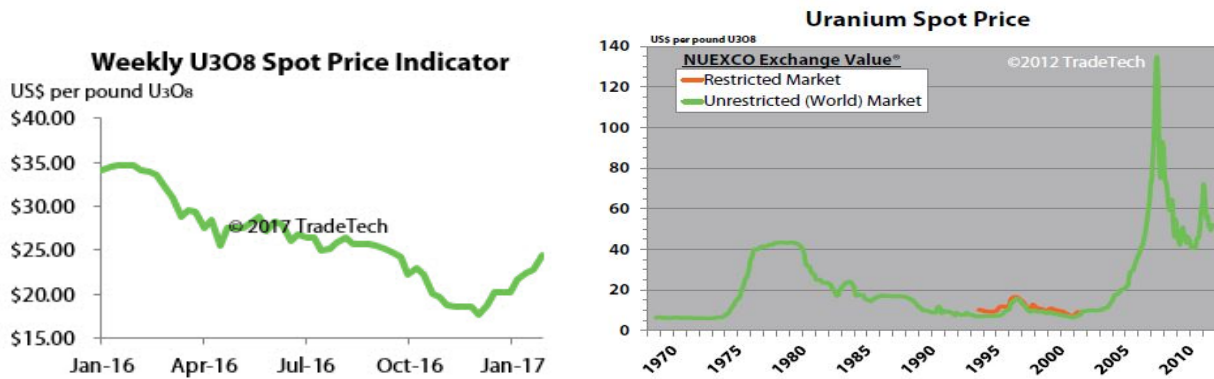


Source: Kitco website - www.kitco.com/connecting.html

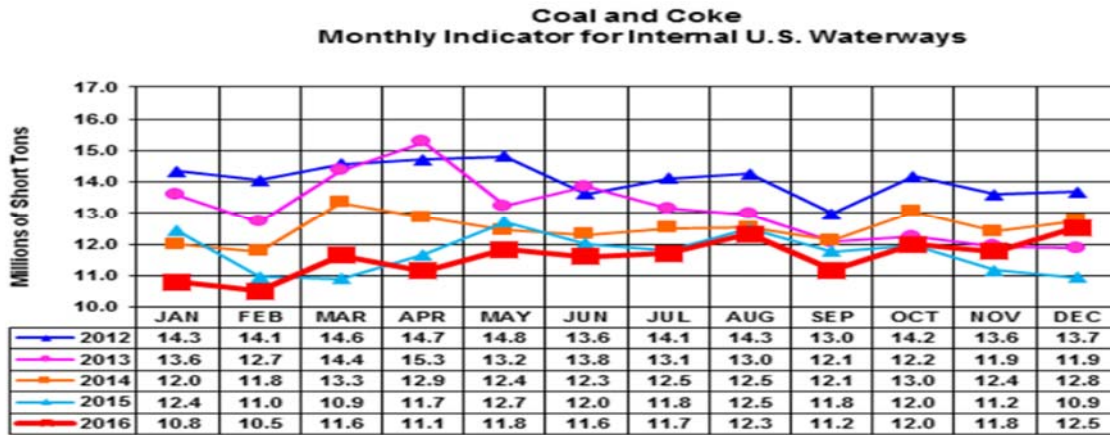


Source: Kitco website - www.kitco.com/connecting.html

Trade Tech's Uranium Price Indicators



Source: Trade Tech, Uranium Info Website – www.uranium.info



Source: U.S. Army Corps of Engineers, Waterborne Commerce Statistics Center

NYMEX Coal Futures Near-month Contract Final Settlement Price



Source: The New York Mercantile Exchange (NYMEX), Daily Energy Bulletin.

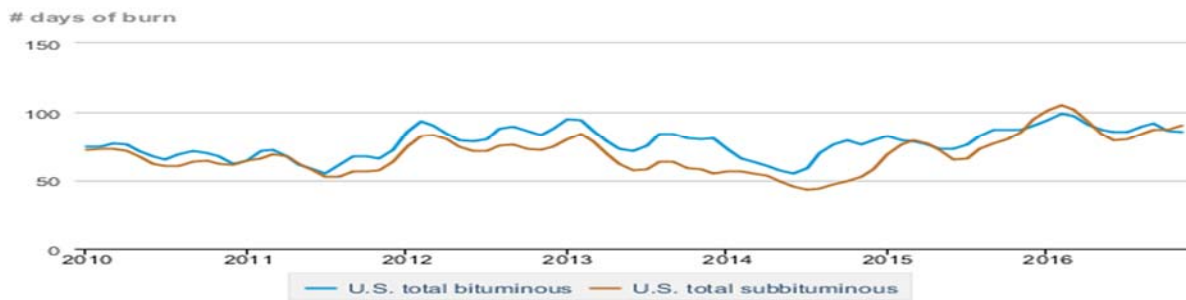
Source: Energy Information Administration, based on NYMEX and Daily Energy Bulletin data

Average weekly coal commodity spot prices dollars per short ton

	Week ending					Week ago
	01/06/17	01/13/17	01/20/17	01/27/17	02/03/17	change
Central Appalachia 12,500 Btu, 1.2 SO ₂	\$46.50	\$46.50	\$50.00	\$50.00	\$50.05	\$0.05
Northern Appalachia 13,000 Btu, < 3.0 SO ₂	\$44.30	\$44.30	\$45.75	\$45.75	\$45.80	\$0.05
Illinois Basin 11,800 Btu, 5.0 SO ₂	\$35.00	\$35.00	\$35.00	\$35.00	\$31.75	\$-3.25
Powder River Basin 8,800 Btu, 0.8 SO ₂	\$11.05	\$11.05	\$11.80	\$11.80	\$11.80	\$0.00
Uinta Basin 11,700 Btu, 0.8 SO ₂	\$41.10	\$41.10	\$41.10	\$41.10	\$41.15	\$0.05

Source: Energy Information Administration (with permission from SNL), *Coal News and Markets Report*

Days of burn by non-lignite coal rank, January 2009 - November 2016



 Source: U.S. Energy Information Administration

Source: Energy Information Administration, *Electricity Monthly Update Report*

Temperature -- heating & cooling degree days (week ending Jan 26)

Region	HDD Current	HDD deviation from:		CDD Current	CDD deviation from:	
		normal	last year		normal	last year
New England	182	-93	-91	0	0	0
Middle Atlantic	166	-97	-112	0	0	0
E N Central	168	-127	-120	0	0	0
W N Central	205	-108	-80	0	0	0
South Atlantic	93	-88	-128	12	4	10
E S Central	85	-101	-127	0	-1	0
W S Central	65	-72	-61	6	2	6
Mountain	231	3	31	0	-1	0
Pacific	148	31	54	0	-1	0
United States	151	-72	-68	3	1	3

Note: HDD = heating degree day; CDD = cooling degree day

Source: National Oceanic and Atmospheric Administration

Source: Energy Information Administration

USGS Production of Selected Mineral Commodities	2016 Year to Date - 3rd Quarter	2015 Year to Date - 3rd Quarter	Percent Change
Aluminum, secondary (000 Mt.)	673.0	556.0	21%
Cement (Mil. Mt.)	62.3	61.1	2%
Copper (000 Mt.)	1,080.0	1,040.0	4%
Gold (Mt.)	157.0	157.0	0%
Gypsum (Mil. Mt.)	12.4	11.3	10%
Iron Ore (Mil. Mt.)	29.3	32.8	-11%
Lead (000 Mt.)	260.0	277.0	-6%
Molybdenum (000 Mt.)	26.1	40.1	-35%
Phosphate rock (Mil. Mt.)	20.2	20.8	-3%
Sand & gravel, construction (Mil. Mt.)	732.0	703.0	4%
Silver (Mt.)	853.0	814.0	5%
Soda ash (Mil. Mt.)	8.8	8.7	1%
Stone, crushed (Mil. Mt.)	1,050.0	990.0	6%
Zinc (000 Mt.)	597.0	604.0	-1%

Source: U.S. Geological Survey, Mineral Industry Surveys. Percent change based on USGS rounded numbers. 2016 data are preliminary estimates.

Natural gas spot prices (Henry Hub)



Source: Energy Information Administration, *Natural Gas Weekly Update*

EIA Coal Stocks and Average Number of Days of Burn (Power Sector)

Coal stocks and average number of days of burn for non-lignite coal by region (electric power sector)

Zone	Coal	November 2016		November 2015		% Change of Stocks	October 2016		% Change of Stocks
		Stocks (1000 tons)	Days of Burn	Stocks (1000 tons)	Days of Burn		Stocks (1000 tons)	Days of Burn	
Northeast	Bituminous	5,891	77	8,032	89	-26.6%	5,646	84	4.3%
	Subbituminous	153	63	708	147	-78.4%	136	69	11.9%
South	Bituminous	30,741	82	37,019	91	-17.0%	27,996	83	9.8%
	Subbituminous	6,491	75	7,584	84	-14.4%	6,039	73	7.5%
Midwest	Bituminous	17,154	90	17,550	82	-2.3%	16,909	94	1.4%
	Subbituminous	45,254	85	45,375	74	-0.3%	43,096	84	5.0%
West	Bituminous	6,099	93	5,785	78	5.4%	5,859	84	4.1%
	Subbituminous	34,098	102	39,044	104	-12.7%	31,312	95	8.9%
U.S. Total	Bituminous	59,885	85	68,386	87	-12.4%	56,410	86	6.2%
	Subbituminous	85,996	90	92,710	85	-7.2%	80,583	87	6.7%

Source: Energy Information Administration, *Electricity Monthly Update*

EIA Working Natural Gas Underground Storage

Working gas in underground storage

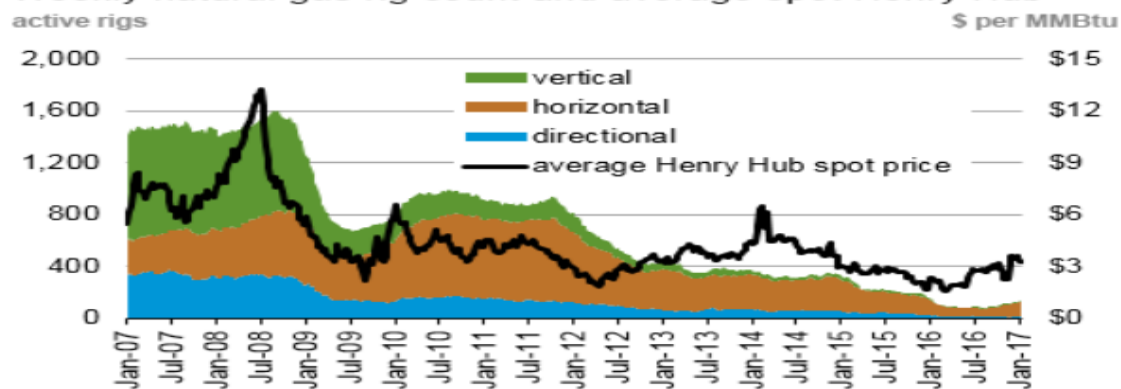
Region	Stocks billion cubic feet (Bcf)		
	2017-01-27	2017-01-20	change
East	569	596	-27
Midwest	730	757	-27
Mountain	164	173	-9
Pacific	221	235	-14
South Central	1,027	1,037	-10
Total	2,711	2,798	-87

Source: U.S. Energy Information Administration

Source: Energy Information Administration, *Natural Gas Weekly Update*

EIA Natural Gas Rig Count and Price Trend

Weekly natural gas rig count and average spot Henry Hub



Source: Baker Hughes

Source: Energy Information Administration, *Natural Gas Weekly Update*

EIA Oil and Natural Gas Rig Productivity

Region	New-well oil production per rig barrels/day			New-well gas production per rig thousand cubic feet/day		
	January 2017	February 2017	change	January 2017	February 2017	change
Bakken	968	990	22	1,366	1,415	49
Eagle Ford	1,395	1,417	22	4,033	4,129	96
Haynesville	30	30	-	6,838	7,011	173
Marcellus	69	69	-	12,681	12,867	186
Niobrara	1,251	1,280	29	4,030	4,146	116
Permian	652	660	8	1,087	1,097	10
Utica	118	108	(10)	8,672	8,722	50
Rig-weighted average	682	697	15	3,312	3,400	88

Source: Energy Information Administration, *Drilling Productivity Report*